

# Redest the Sun

Dearest is Chairman Mao

Xiren Wang

1

Measures 1-3 of the piece. The score is written for a vocal line and a piano accompaniment. The vocal line is on a purple staff with a treble clef, and the piano accompaniment is on a grand staff (treble and bass clefs) with a 4/4 time signature. The piano part features a steady eighth-note bass line in the left hand and chords in the right hand. The vocal line begins with a quarter rest, followed by a series of eighth and quarter notes, including a melisma (indicated by a wavy line) in measure 3.

4

Measures 4-6 of the piece. The vocal line continues with a melisma in measure 4, followed by a series of quarter and eighth notes. The piano accompaniment maintains the same rhythmic pattern, with the right hand playing chords and the left hand playing a steady eighth-note bass line.

7

Measures 7-9 of the piece. The vocal line continues with a series of quarter and eighth notes. The piano accompaniment maintains the same rhythmic pattern, with the right hand playing chords and the left hand playing a steady eighth-note bass line.

10

Measures 10-12. Treble clef has green notes, bass clef has blue notes. Measure 10: Treble (G4, A4, B4), Bass (F3, G3, A3). Measure 11: Treble (C5, B4, A4), Bass (B2, C3, D3). Measure 12: Treble (G4, A4, B4), Bass (E2, F2, G2).

13

Measures 13-15. Treble clef has green notes, bass clef has blue notes. Measure 13: Treble (C5, B4, A4), Bass (F3, G3, A3). Measure 14: Treble (G4, A4, B4), Bass (B2, C3, D3). Measure 15: Treble (C5, B4, A4), Bass (E2, F2, G2).

16

Measures 16-18. Treble clef has green notes, bass clef has blue notes. Measure 16: Treble (C5, B4, A4), Bass (F3, G3, A3). Measure 17: Treble (G4, A4, B4), Bass (B2, C3, D3). Measure 18: Treble (C5, B4, A4), Bass (E2, F2, G2).

19

Measures 19-21 of the musical score. Measure 19 features a half note chord (F4, C5) and a half note (F4) in the treble, and a half note chord (F3, C4) and a half note (F3) in the bass. Measure 20 features a half note (F4) and a half note (C5) in the treble, and a half note (F3) and a half note (C4) in the bass. Measure 21 features a half note (F4) and a half note (C5) in the treble, and a half note (F3) and a half note (C4) in the bass.

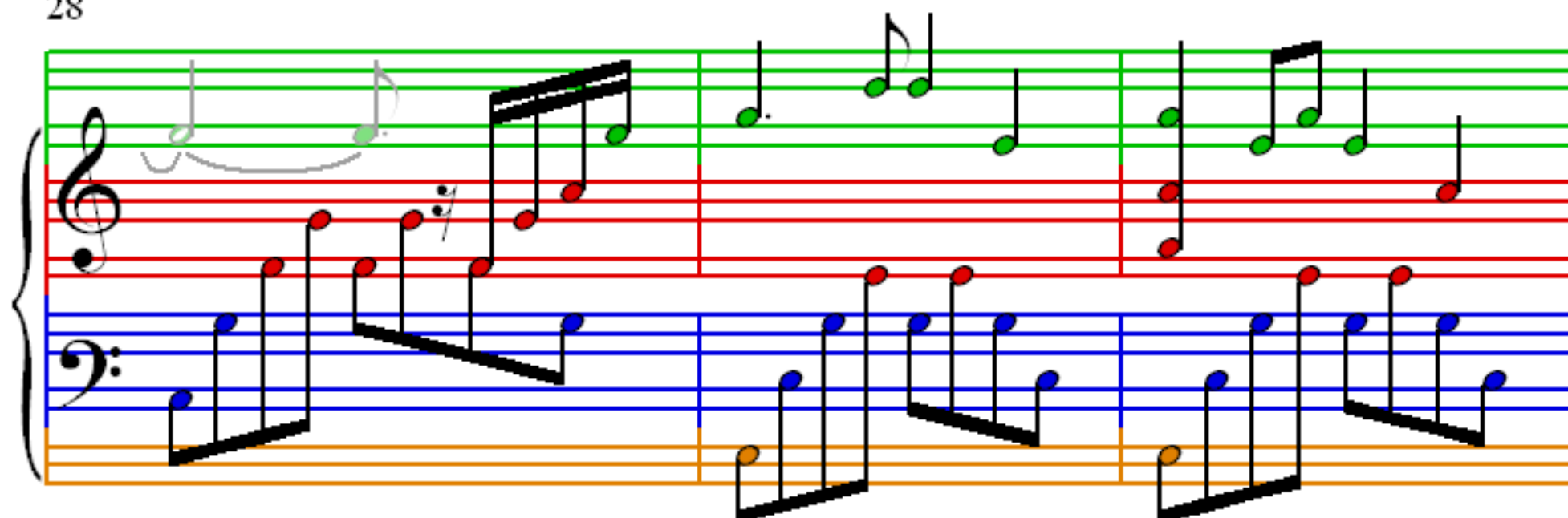
22

Measures 22-24 of the musical score. Measure 22 features a half note (F4) and a half note (C5) in the treble, and a half note (F3) and a half note (C4) in the bass. Measure 23 features a half note (F4) and a half note (C5) in the treble, and a half note (F3) and a half note (C4) in the bass. Measure 24 features a half note (F4) and a half note (C5) in the treble, and a half note (F3) and a half note (C4) in the bass.

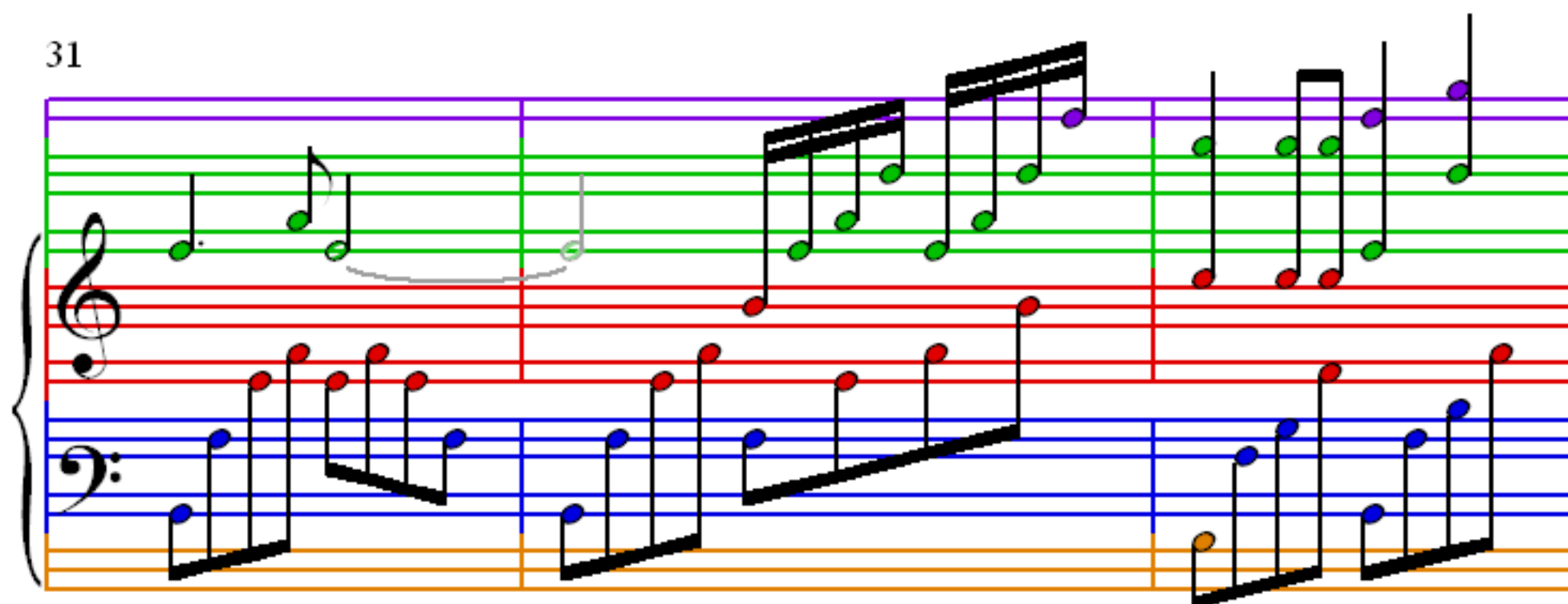
25

Measures 25-27 of the musical score. Measure 25 features a half note (F4) and a half note (C5) in the treble, and a half note (F3) and a half note (C4) in the bass. Measure 26 features a half note (F4) and a half note (C5) in the treble, and a half note (F3) and a half note (C4) in the bass. Measure 27 features a half note (F4) and a half note (C5) in the treble, and a half note (F3) and a half note (C4) in the bass.

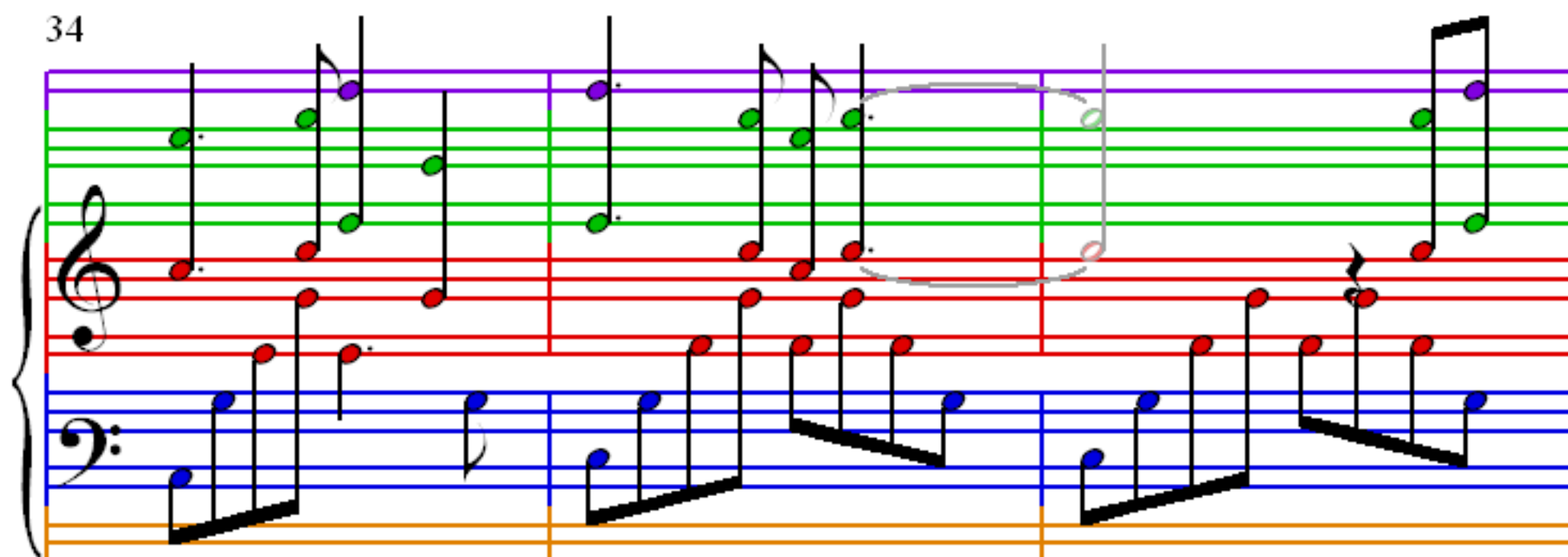
28



31



34



37

Measures 37-39 of a musical score. The score is written for a grand staff with a treble clef and a bass clef. The treble staff has a purple line, a green line, and a red line. The bass staff has a blue line, a red line, and an orange line. The music consists of eighth and sixteenth notes, with some beamed sixteenth notes. The notes are colored: purple, green, red, blue, and orange. The measures are separated by vertical bar lines.

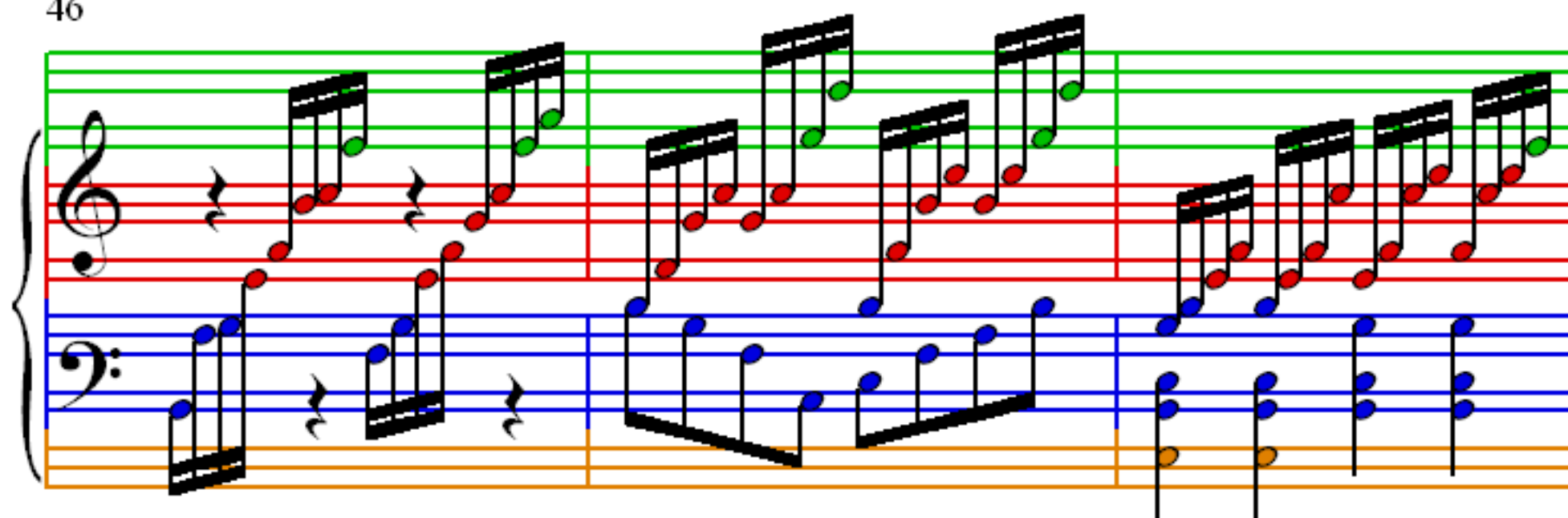
40

Measures 40-42 of a musical score. The score is written for a grand staff with a treble clef and a bass clef. The treble staff has a purple line, a green line, and a red line. The bass staff has a blue line, a red line, and an orange line. The music consists of eighth and sixteenth notes, with some beamed sixteenth notes. The notes are colored: purple, green, red, blue, and orange. The measures are separated by vertical bar lines.

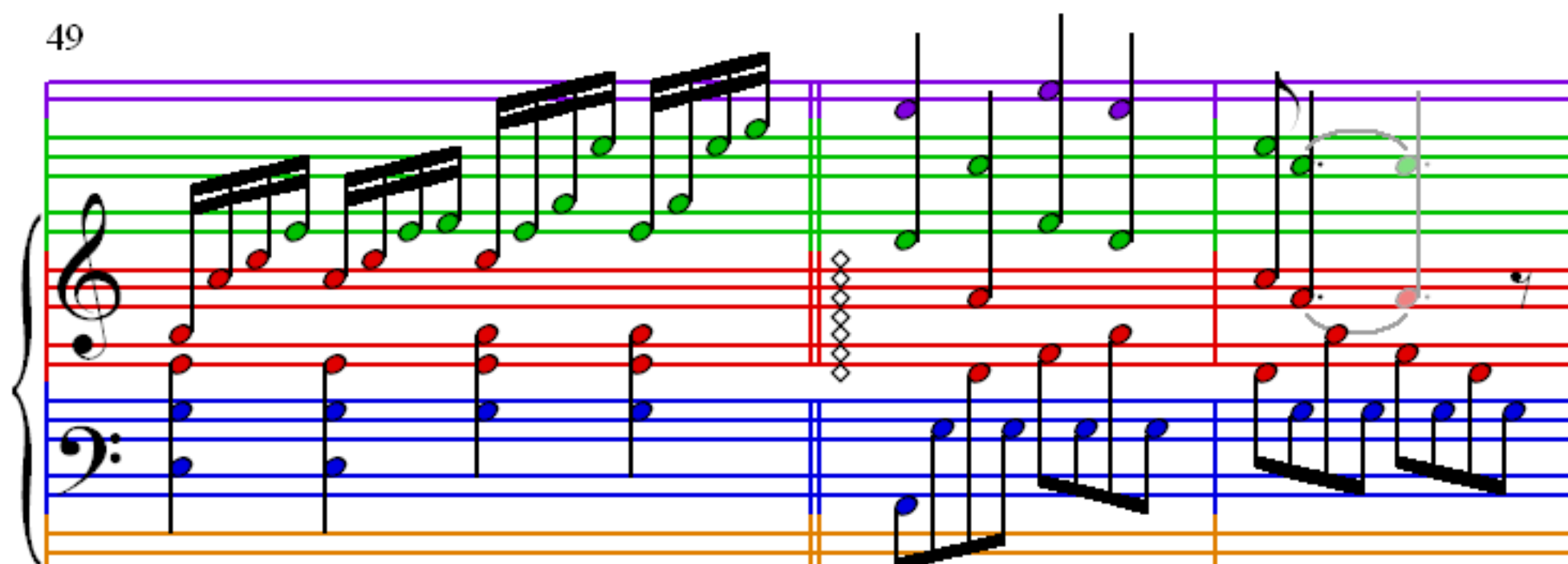
43

Measures 43-45 of a musical score. The score is written for a grand staff with a treble clef and a bass clef. The treble staff has a purple line, a green line, and a red line. The bass staff has a blue line, a red line, and an orange line. The music consists of eighth and sixteenth notes, with some beamed sixteenth notes. The notes are colored: purple, green, red, blue, and orange. The measures are separated by vertical bar lines.

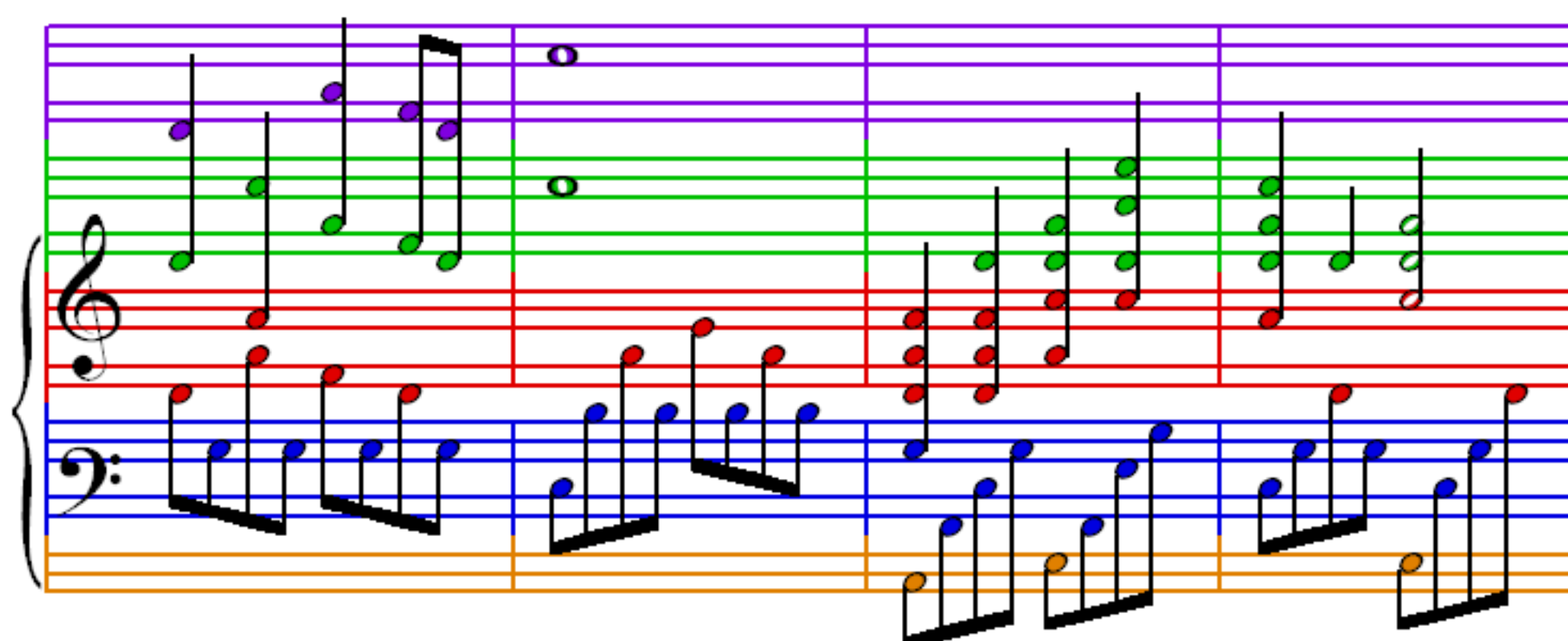
46



49



52



56

Measures 56-58 of a musical score. The system consists of a grand staff with a treble clef (purple staff) and a bass clef (blue staff). The treble staff contains a melodic line with eighth and sixteenth notes, some beamed together. The bass staff contains a bass line with eighth and sixteenth notes, also beamed together. The notes are color-coded: purple for the treble staff and blue for the bass staff. The background of the staves is color-coded: purple for the top staff, green for the middle staff, red for the bottom staff, and orange for the bottom-most staff.

59

Measures 59-61 of a musical score. The system consists of a grand staff with a treble clef (purple staff) and a bass clef (blue staff). The treble staff contains a melodic line with eighth and sixteenth notes, some beamed together. The bass staff contains a bass line with eighth and sixteenth notes, also beamed together. The notes are color-coded: purple for the treble staff and blue for the bass staff. The background of the staves is color-coded: purple for the top staff, green for the middle staff, red for the bottom staff, and orange for the bottom-most staff.

62

Measures 62-64 of a musical score. The system consists of a grand staff with a treble clef (purple staff) and a bass clef (blue staff). The treble staff contains a melodic line with eighth and sixteenth notes, some beamed together. The bass staff contains a bass line with eighth and sixteenth notes, also beamed together. The notes are color-coded: purple for the treble staff and blue for the bass staff. The background of the staves is color-coded: purple for the top staff, green for the middle staff, red for the bottom staff, and orange for the bottom-most staff.