


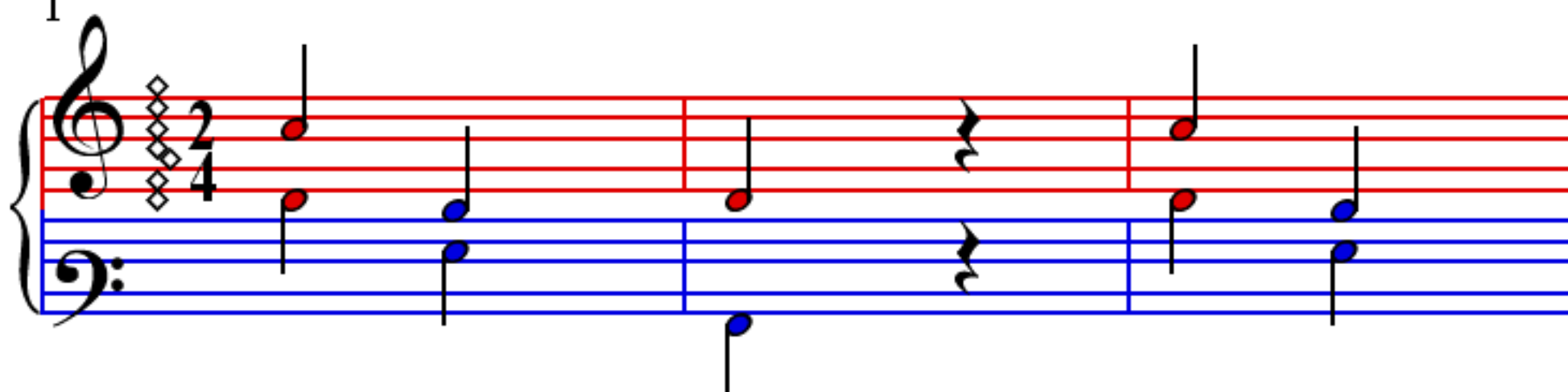
# Orosz Nepdal-Russisches Volkslied

Secondo

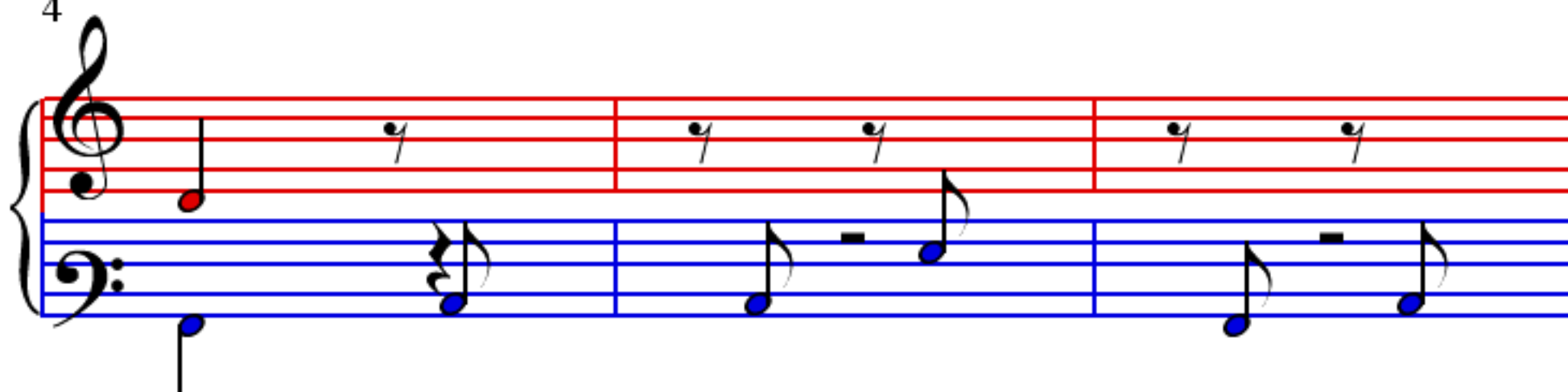
Golubovszkoj

 = 120

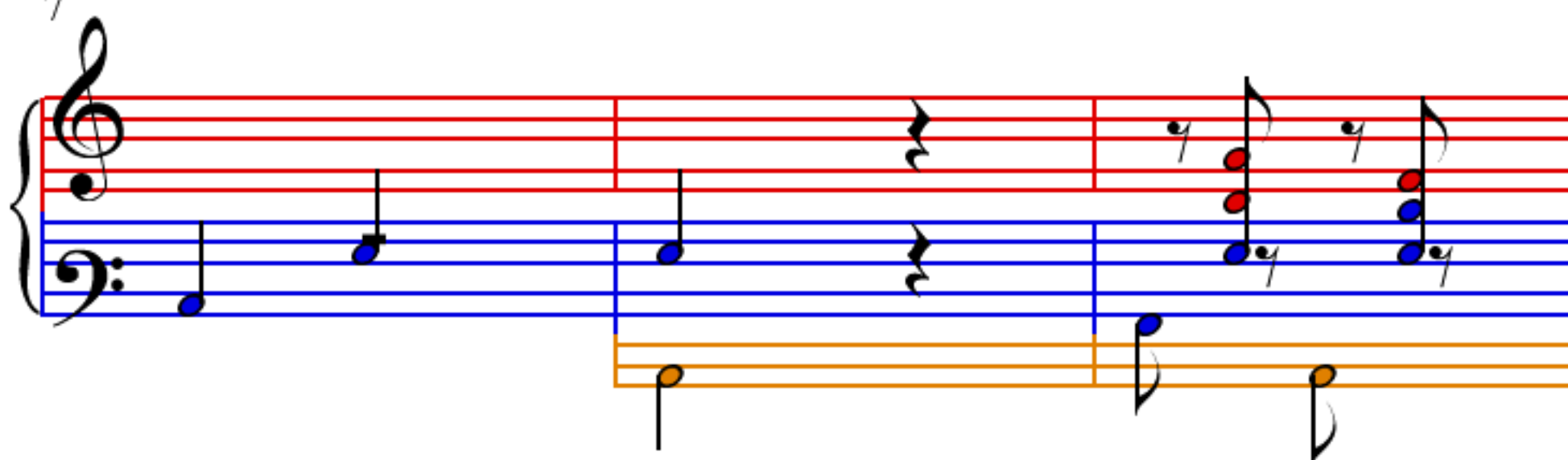
1



4



7



10



13

17

20

23

27

Measures 27-30. Treble clef: Red staves. Measure 27: two whole notes. Measure 28: two whole notes. Measure 29: two whole notes. Measure 30: two whole notes. Bass clef: Blue staves. Measure 27: eighth note, quarter note. Measure 28: eighth note, quarter note. Measure 29: eighth note, quarter note. Measure 30: eighth note, quarter note.

31

Measures 31-33. Treble clef: Red staves. Measure 31: two whole notes. Measure 32: two whole notes. Measure 33: two whole notes. Bass clef: Blue staves. Measure 31: eighth note, quarter note. Measure 32: eighth note, quarter note. Measure 33: eighth note, quarter note. Orange staff: whole notes.

34

Measures 34-36. Treble clef: Red staves. Measure 34: two whole notes. Measure 35: two whole notes. Measure 36: two whole notes. Bass clef: Blue staves. Measure 34: eighth note, quarter note. Measure 35: eighth note, quarter note. Measure 36: eighth note, quarter note. Orange staff: whole notes.

37

Measures 37-40. Treble clef: Red staves. Measure 37: two whole notes. Measure 38: two whole notes. Measure 39: two whole notes. Measure 40: two whole notes. Bass clef: Blue staves. Measure 37: eighth note, quarter note. Measure 38: eighth note, quarter note. Measure 39: eighth note, quarter note. Measure 40: eighth note, quarter note. Orange staff: whole notes.