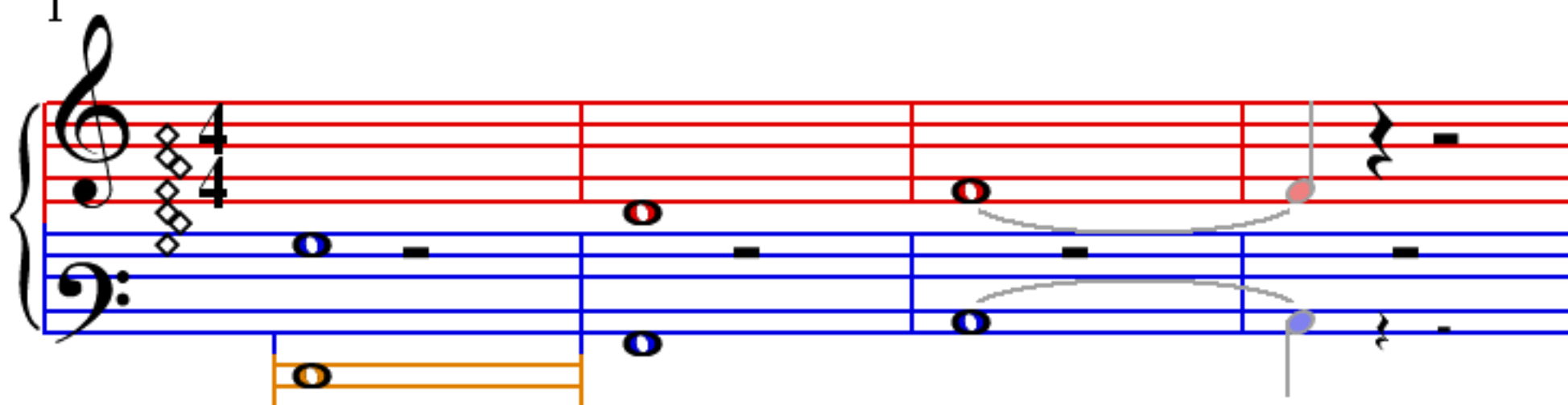


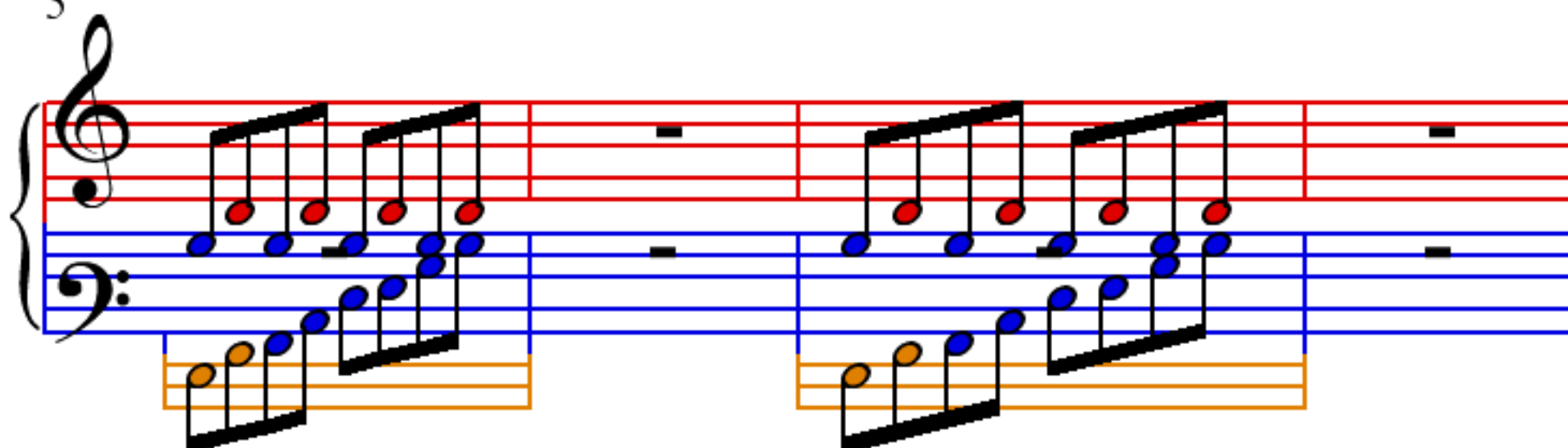
♩ = 120

Turn Around, Bustle & Blaze

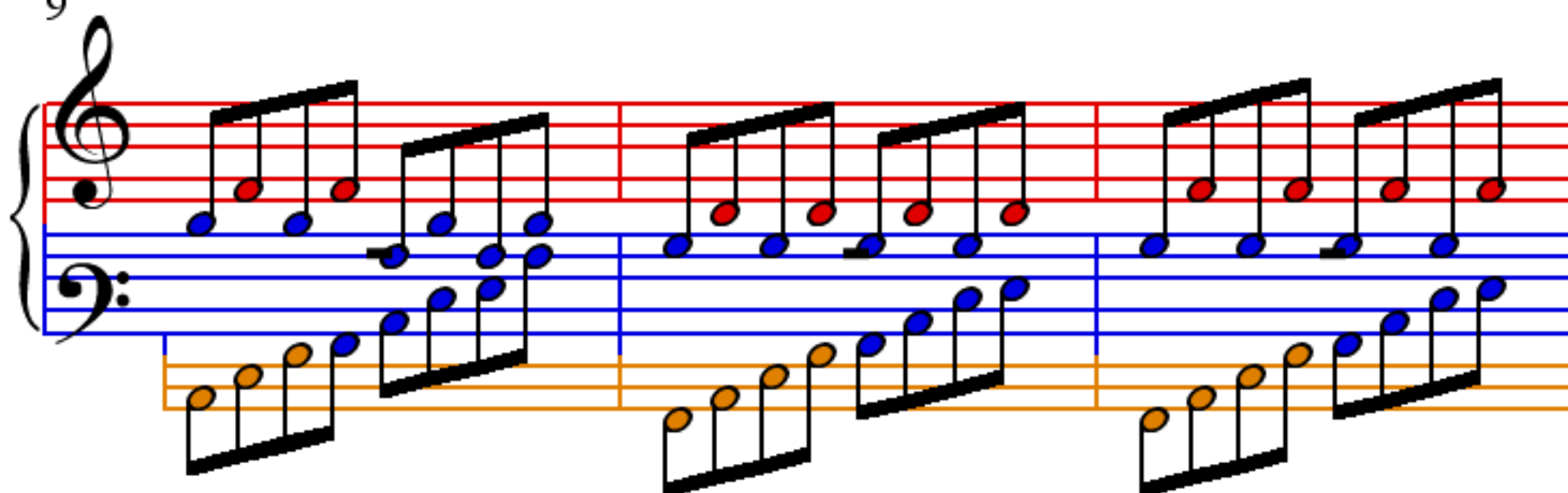
1



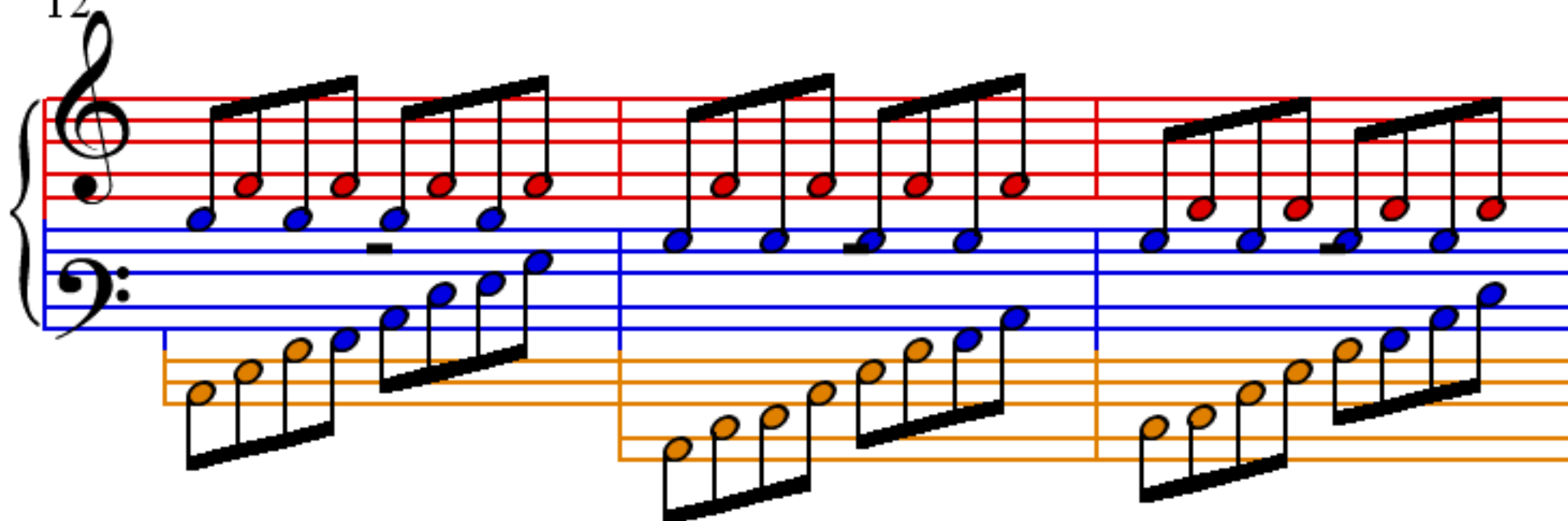
5



9



12



15

18

21

24

27

Measures 27-30 of the piece. The notation is presented in a system with four staves. The top staff is a green treble clef staff. The second staff is a red treble clef staff. The third staff is a blue bass clef staff. The fourth staff is an orange bass clef staff. The music features a variety of note values, including quarter, eighth, and sixteenth notes, as well as rests. The notes are color-coded: green for the top staff, red for the second staff, blue for the third staff, and orange for the fourth staff. The notation is written in a standard musical format with stems and beams.

31

Measures 31-34 of the piece. The notation is presented in a system with four staves. The top staff is a green treble clef staff. The second staff is a red treble clef staff. The third staff is a blue bass clef staff. The fourth staff is an orange bass clef staff. The music features a variety of note values, including quarter, eighth, and sixteenth notes, as well as rests. The notes are color-coded: green for the top staff, red for the second staff, blue for the third staff, and orange for the fourth staff. The notation is written in a standard musical format with stems and beams.

35

Measures 35-38 of the piece. The notation is presented in a system with four staves. The top staff is a green treble clef staff. The second staff is a red treble clef staff. The third staff is a blue bass clef staff. The fourth staff is an orange bass clef staff. The music features a variety of note values, including quarter, eighth, and sixteenth notes, as well as rests. The notes are color-coded: green for the top staff, red for the second staff, blue for the third staff, and orange for the fourth staff. The notation is written in a standard musical format with stems and beams.

45

A musical score for piano and guitar. The piano part is written on a grand staff with a treble and bass clef. The treble staff has a green staff line and a red staff line. The bass staff has a blue staff line and a pink staff line. The guitar part is written on a single staff with a pink staff line. The score is divided into three measures. The first measure shows the piano playing a melody in the treble staff and a bass line in the bass staff. The guitar plays a melody in the pink staff. The second measure shows the piano playing a melody in the treble staff and a bass line in the bass staff. The guitar plays a melody in the pink staff. The third measure shows the piano playing a melody in the treble staff and a bass line in the bass staff. The guitar plays a melody in the pink staff.

48

Measures 48-50 of the piece. The system consists of three staves. The top staff is a treble clef with a green staff line. It contains eighth notes in the first measure, a dense cluster of green notes in the second measure, and eighth notes in the third measure. The middle staff is a bass clef with a blue staff line. It contains eighth notes in the first measure, a dense cluster of pink notes in the second measure, and eighth notes in the third measure. The bottom staff is a bass clef with an orange staff line. It contains eighth notes in the first measure, a dense cluster of pink notes in the second measure, and eighth notes in the third measure.

51

Measures 51-53 of the piece. The system consists of three staves. The top staff is a treble clef with a green staff line. It contains eighth notes in the first measure, eighth notes in the second measure, and eighth notes in the third measure. The middle staff is a bass clef with a blue staff line. It contains eighth notes in the first measure, eighth notes in the second measure, and eighth notes in the third measure. The bottom staff is a bass clef with an orange staff line. It contains eighth notes in the first measure, eighth notes in the second measure, and eighth notes in the third measure.

54

Measures 54-56 of the piece. The system consists of three staves. The top staff is a treble clef with a green staff line. It contains eighth notes in the first measure, eighth notes in the second measure, and eighth notes in the third measure. The middle staff is a bass clef with a blue staff line. It contains eighth notes in the first measure, eighth notes in the second measure, and eighth notes in the third measure. The bottom staff is a bass clef with an orange staff line. It contains eighth notes in the first measure, eighth notes in the second measure, and eighth notes in the third measure.

57

60

63

66

Measures 66-68 of a musical score. The system consists of a grand staff with a treble and bass clef. The treble staff has a green staff line above it. The bass staff has a blue staff line above it. The treble staff contains a sequence of eighth notes, with the first measure having a green staff line above it. The bass staff contains a sequence of eighth notes, with the first measure having a blue staff line above it. The notes are colored green in the treble and blue in the bass.

69

Measures 69-71 of a musical score. The system consists of a grand staff with a treble and bass clef. The treble staff has a green staff line above it. The bass staff has a blue staff line above it. The treble staff contains a sequence of eighth notes, with the first measure having a green staff line above it. The bass staff contains a sequence of eighth notes, with the first measure having a blue staff line above it. The notes are colored green in the treble and blue in the bass.

72

Measures 72-74 of a musical score. The system consists of a grand staff with a treble and bass clef. The treble staff has a green staff line above it. The bass staff has a blue staff line above it. The treble staff contains a sequence of eighth notes, with the first measure having a green staff line above it. The bass staff contains a sequence of eighth notes, with the first measure having a blue staff line above it. The notes are colored green in the treble and blue in the bass.

75

Measures 75-77 of a musical score. The system consists of a grand staff with a treble and bass clef. The treble staff has a green staff line above it. The bass staff has a blue staff line above it. The treble staff contains a sequence of eighth notes, with the first measure having a green staff line above it. The bass staff contains a sequence of eighth notes, with the first measure having a blue staff line above it. The notes are colored green in the treble and blue in the bass.

78

82

86

90

93

96

99

102

106

110

113