

Arabesque in a Minor

Iris De Cairos-Rego

1

4

8

12

16

20

24

28

32

Measures 32-35. Treble clef has red notes, bass clef has blue notes. A third system of orange staves is below. Slurs connect notes across measures.

36

Measures 36-39. Treble clef has red notes, bass clef has blue notes. A third system of orange staves is below. Slurs connect notes across measures.

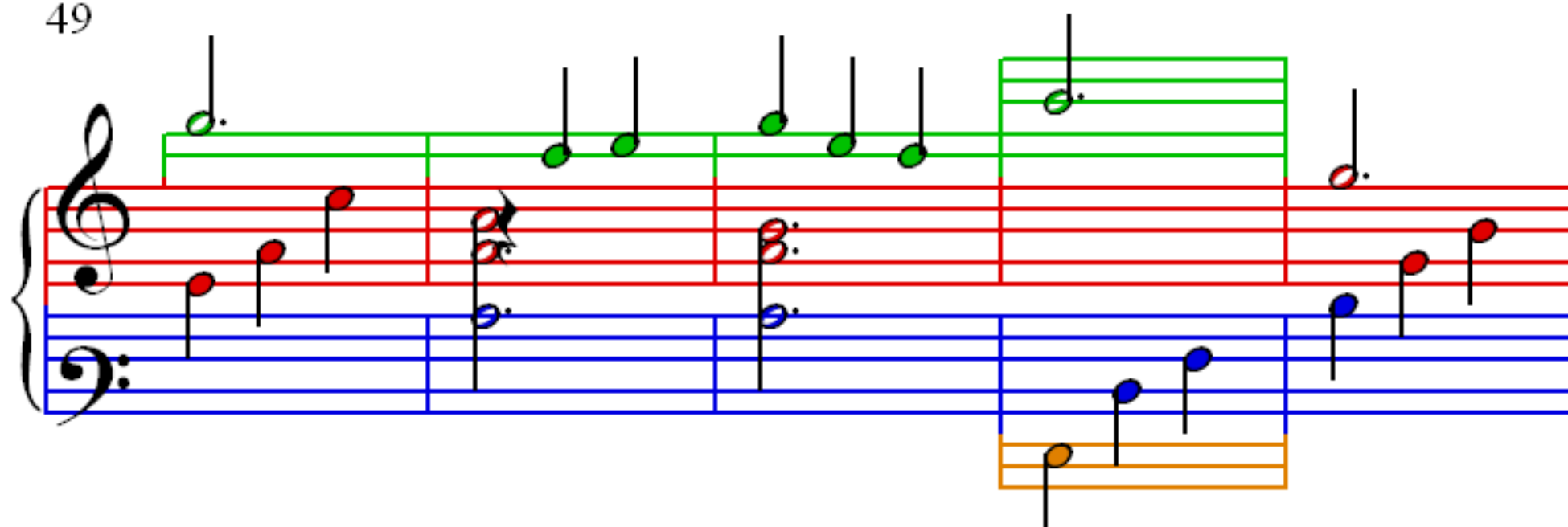
40

Measures 40-43. Treble clef has red notes, bass clef has blue notes. A third system of orange staves is below. Slurs connect notes across measures.

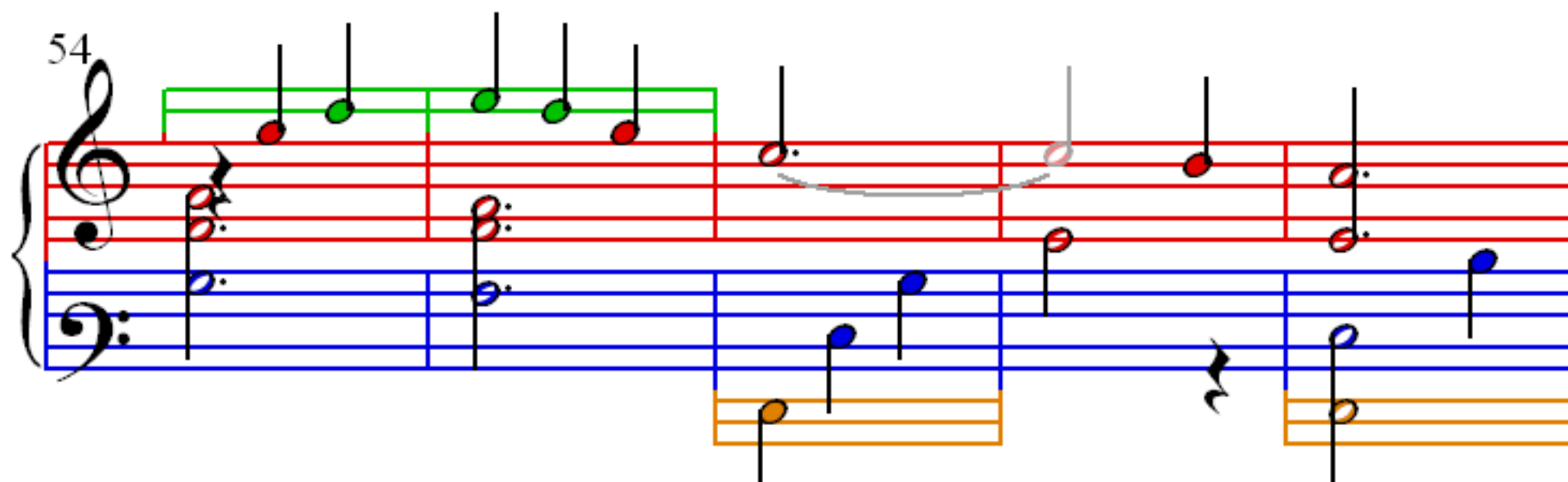
44

Measures 44-47. Treble clef has green notes, bass clef has blue notes. A third system of orange staves is below. Slurs connect notes across measures.

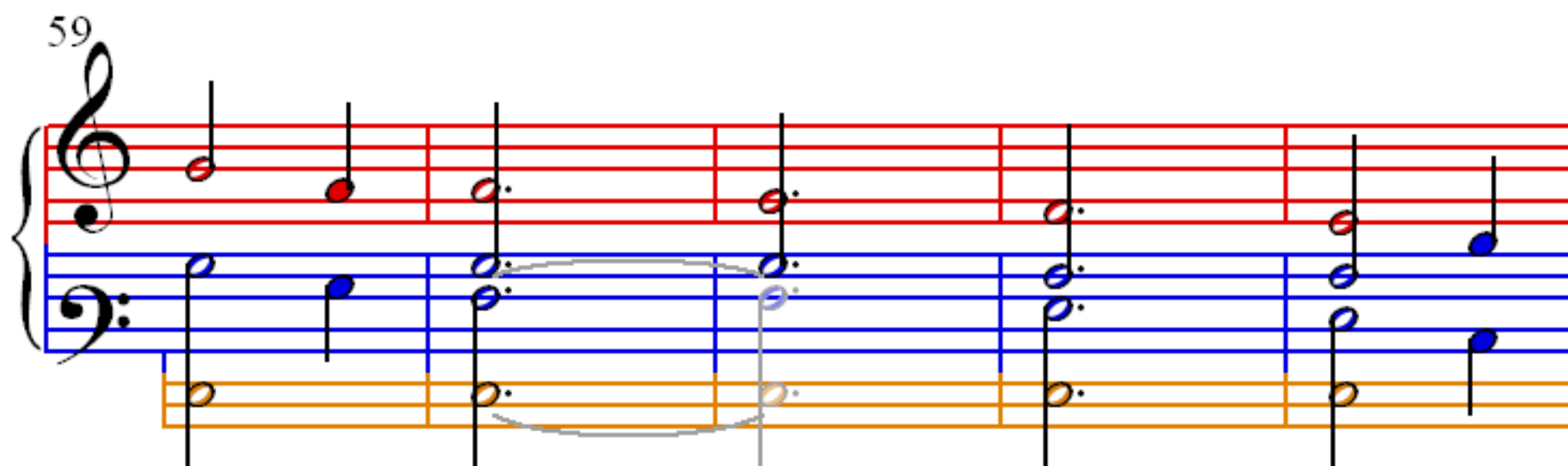
49



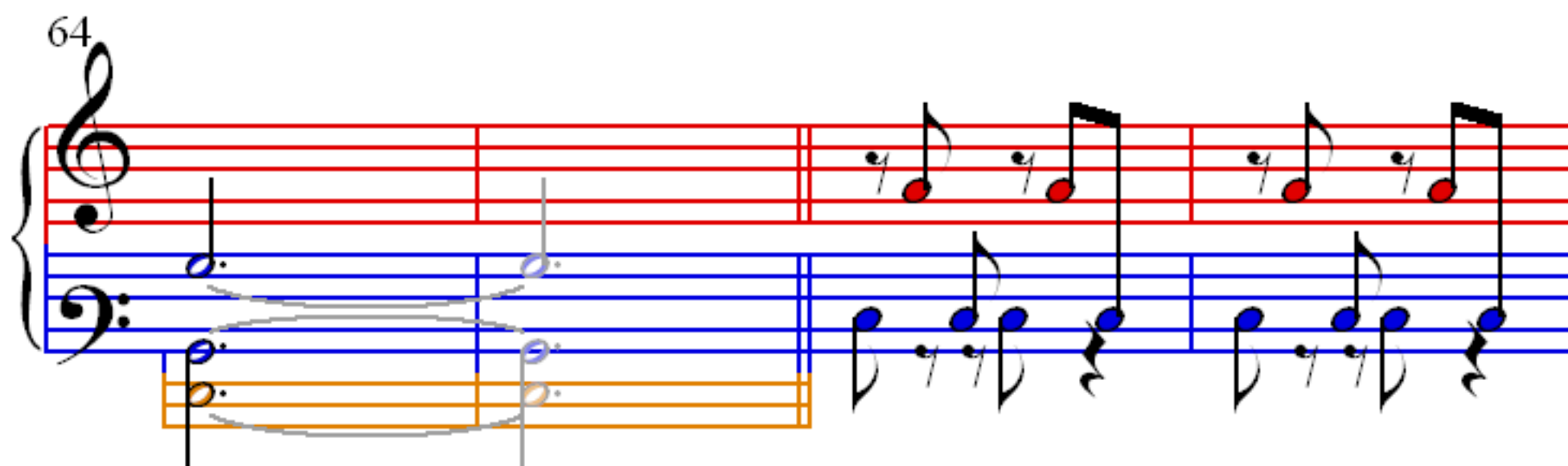
54



59



64



68

Measures 68-71. Treble clef has a green line at the top. Bass clef has a blue line at the bottom. A yellow line is at the very bottom. Notes are colored red, blue, and green.

72

Measures 72-75. Treble clef has a green line at the top. Bass clef has a blue line at the bottom. A yellow line is at the very bottom. Notes are colored red, blue, and green.

76

Measures 76-79. Treble clef has a green line at the top. Bass clef has a blue line at the bottom. A yellow line is at the very bottom. Notes are colored red, blue, and green. A pink box highlights measures 78-79.

80

Measures 80-83. Treble clef has a green line at the top. Bass clef has a blue line at the bottom. A yellow line is at the very bottom. Notes are colored red, blue, and green.

84

88

92

96

100

104

108

112

116

120

124

128