

# O Mio Babibino Caro

$\text{♩} = 120$

1 *Andante ingenuo*

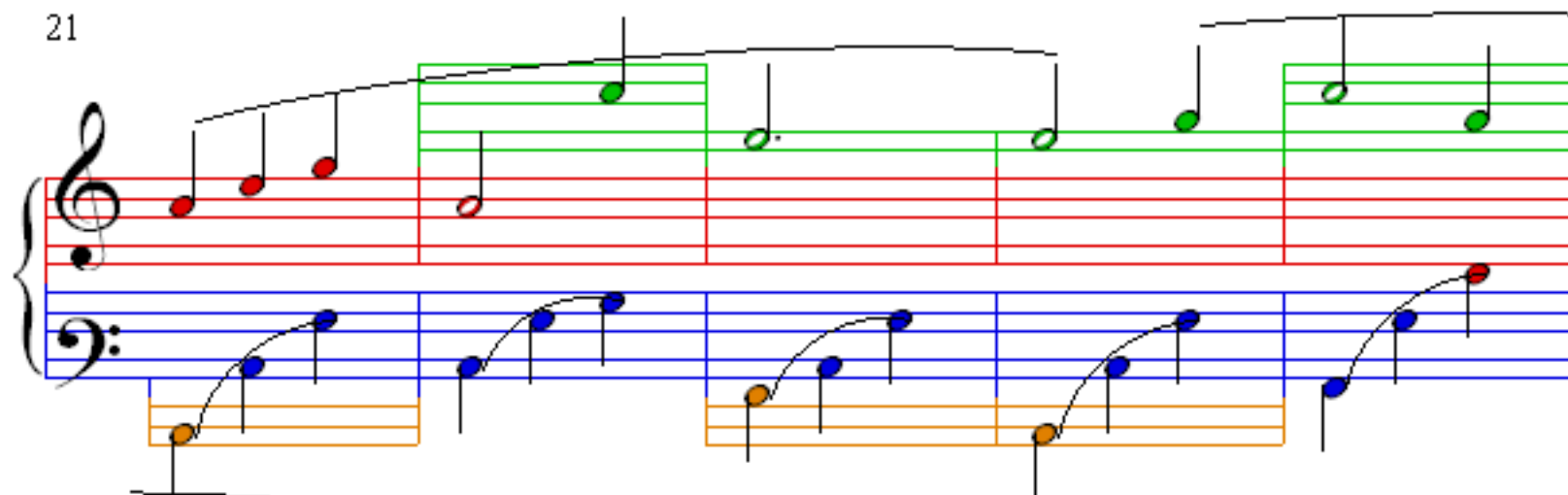
Measures 1-5 of the piece. The treble clef staff (red lines) contains a melody of eighth notes, with a slur over measures 1-4 and a crescendo hairpin. The bass clef staff (blue lines) features a rhythmic accompaniment of eighth notes, with a slur over measures 1-4 and a crescendo hairpin. The piano part is highlighted with orange lines.

Measures 6-10 of the piece. The treble clef staff (red lines) continues the melody, with a green box highlighting measures 6-7. The bass clef staff (blue lines) continues the accompaniment. The piano part is highlighted with orange lines.

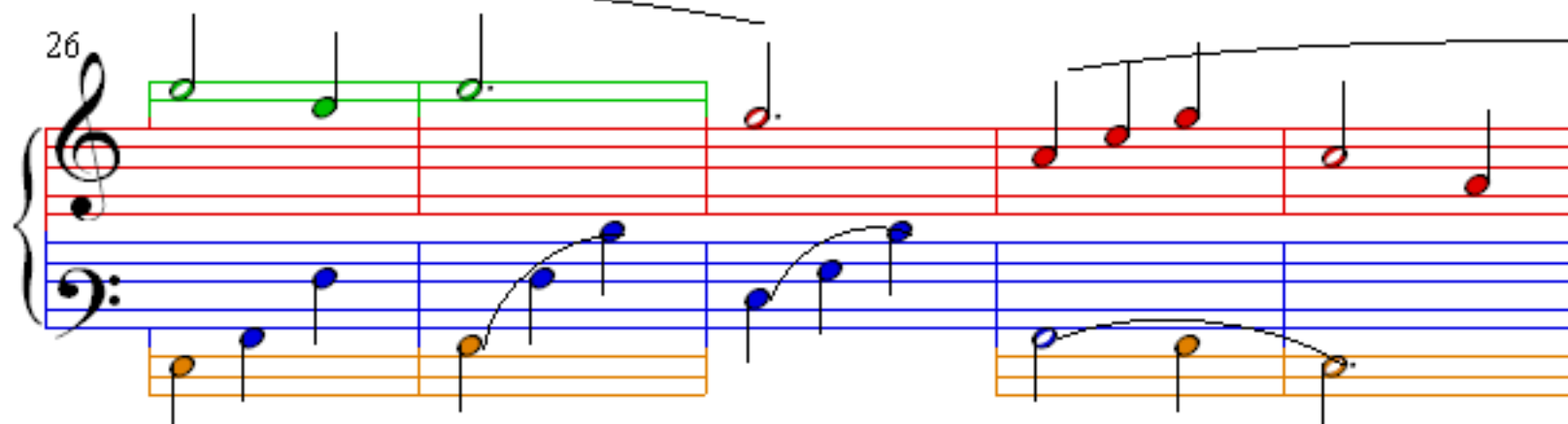
Measures 11-15 of the piece. The treble clef staff (red lines) continues the melody. The bass clef staff (blue lines) continues the accompaniment. The piano part is highlighted with orange lines.

Measures 16-20 of the piece. The treble clef staff (red lines) continues the melody. The bass clef staff (blue lines) continues the accompaniment. The piano part is highlighted with orange lines.

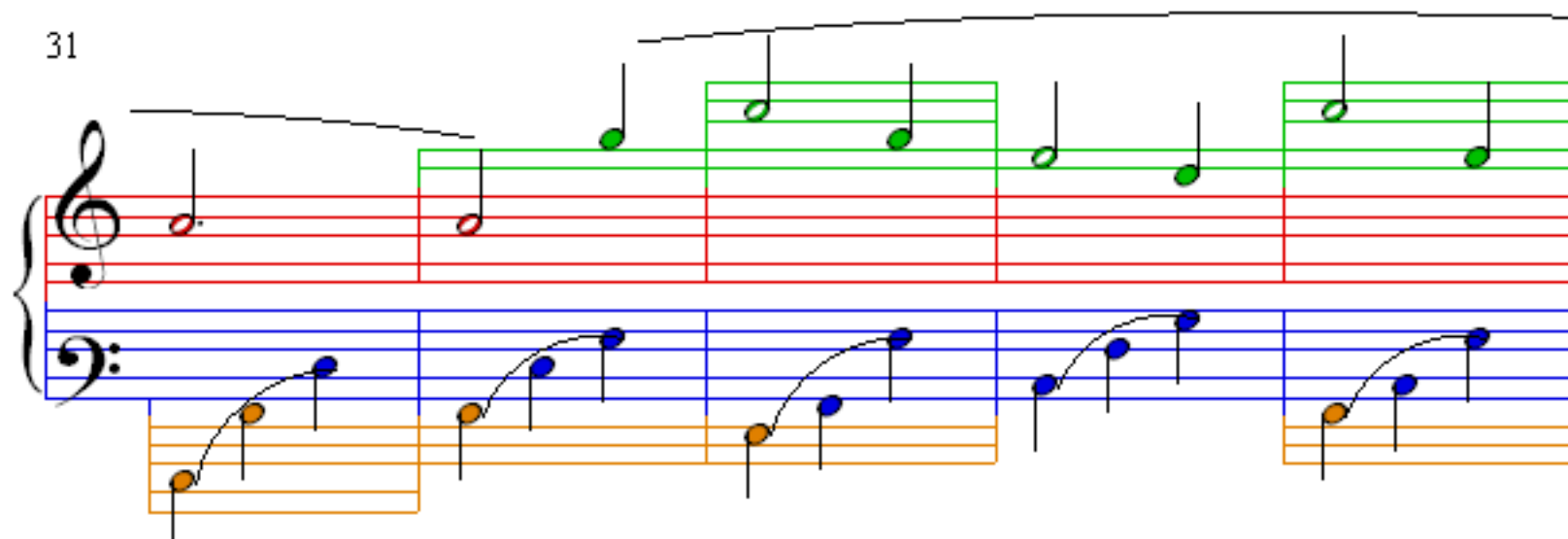
21



26



31



36

