

That's What are Friend for

2

4

6

Notation Format © 2012, R. Ambrose.

8

10

12

14

16

18

20

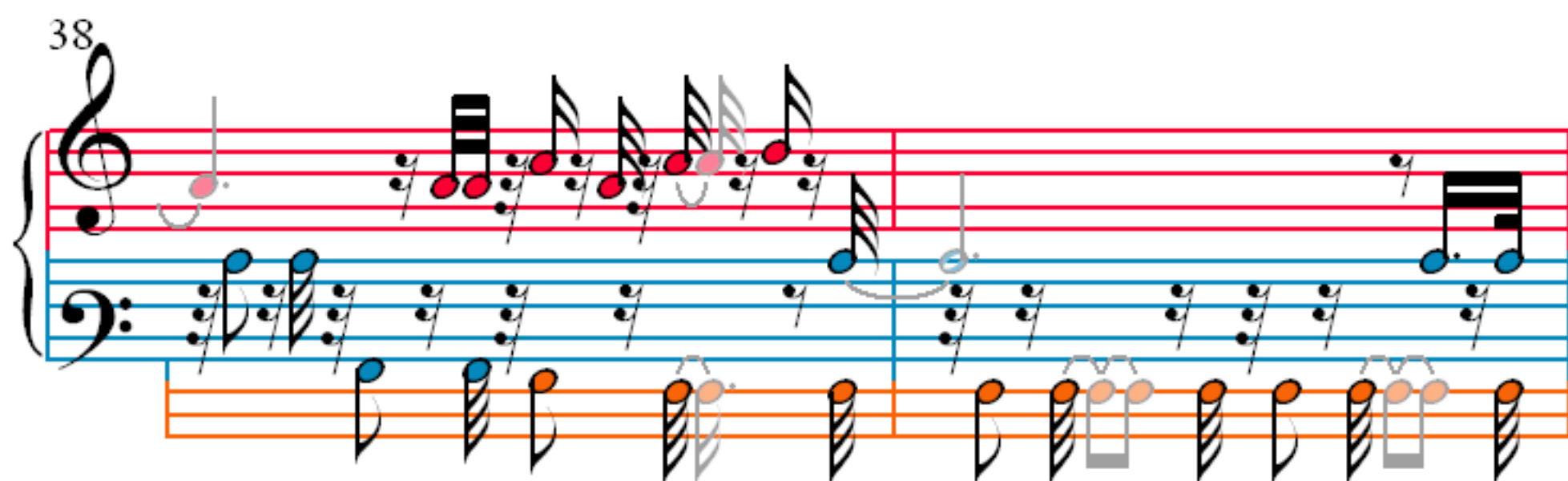
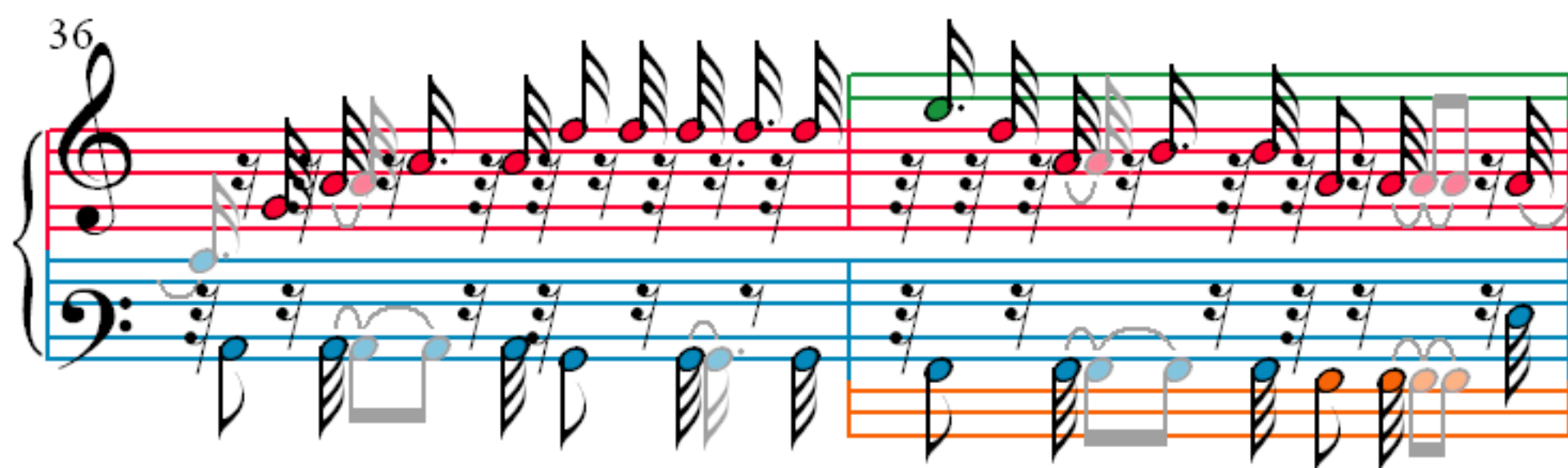
22

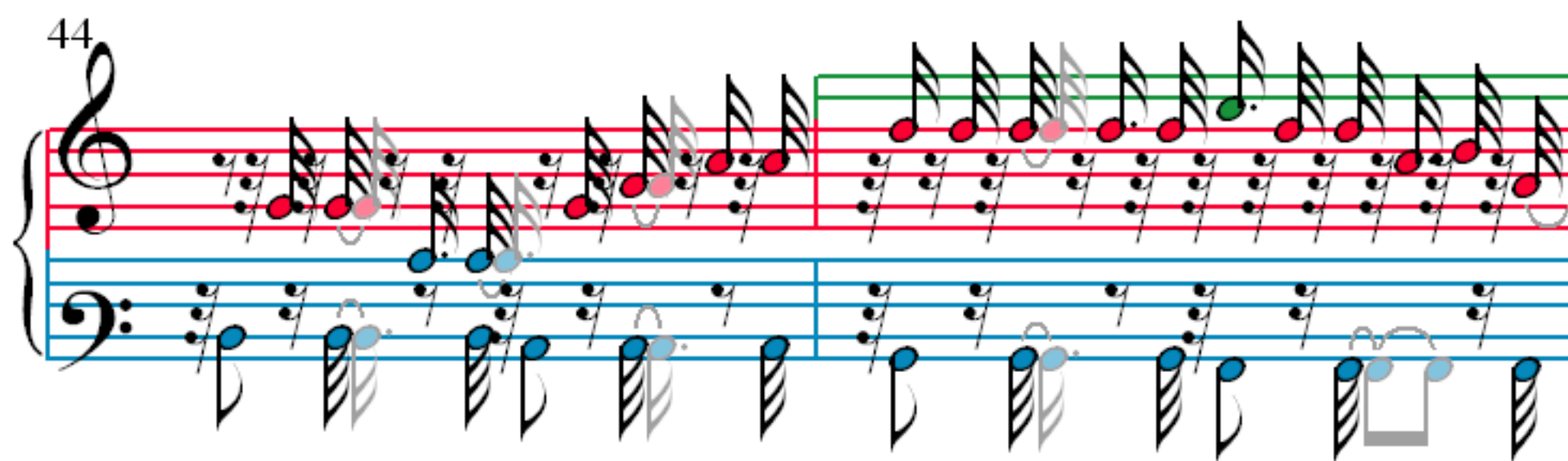
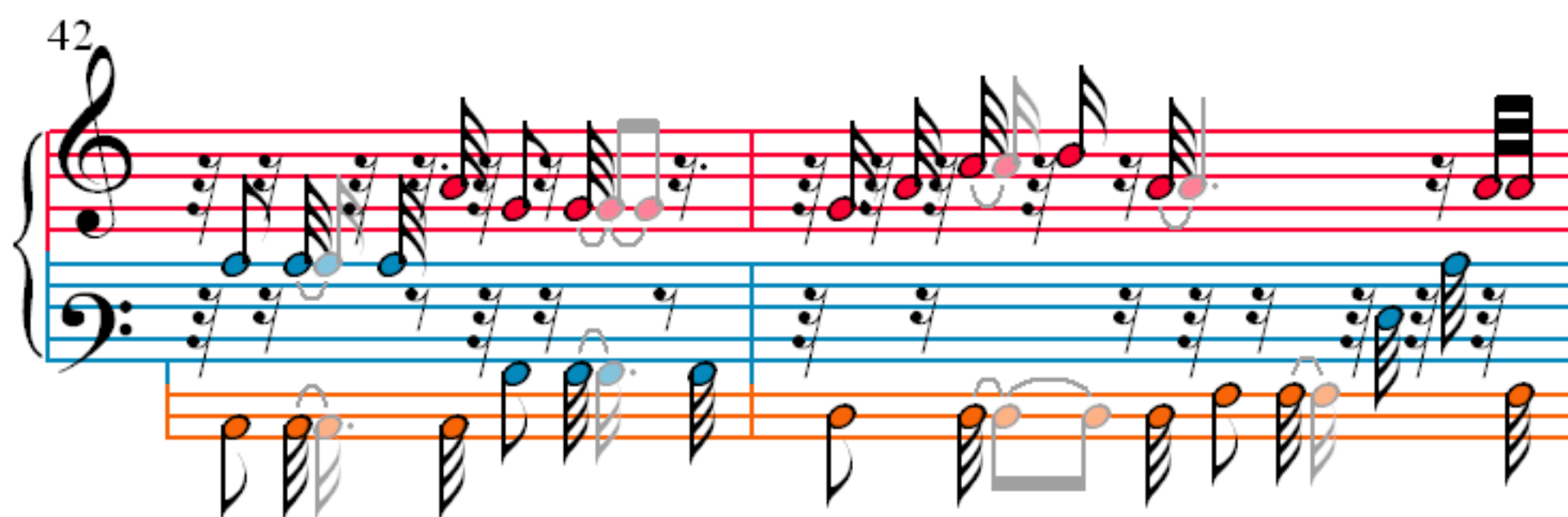
24

26

28

30





54

The image shows a musical score for the song "The Rose Tree". It consists of two staves, a treble staff and a bass staff, both with a key signature of one flat (B-flat). The treble staff begins with a treble clef and a key signature of one flat. The bass staff begins with a bass clef and a key signature of one flat. The music is written in a common time signature (C). The score is divided into two systems by a double bar line. The first system contains measures 54 through 58. The second system contains measures 59 through 63. The melody is written in the treble staff, and the bass line is written in the bass staff. The notes are color-coded: red for the first system and blue for the second system. The notes are also decorated with various patterns, including vertical lines and horizontal lines. The notes are written in a stylized, handwritten font. The score is set against a white background with a light gray grid.

56

58

60