

3rd Part, Nr 1

Traditioner af Swenska Folk-Dansar,

Traditional

1

3

5

7

9

Measures 9 and 10 of the musical score. The treble staff features a green line at the top. The bass staff has a blue line at the bottom. An orange line is positioned below the bass staff.

11

Measures 11 and 12 of the musical score. The treble staff features a green line at the top. The bass staff has a blue line at the bottom.

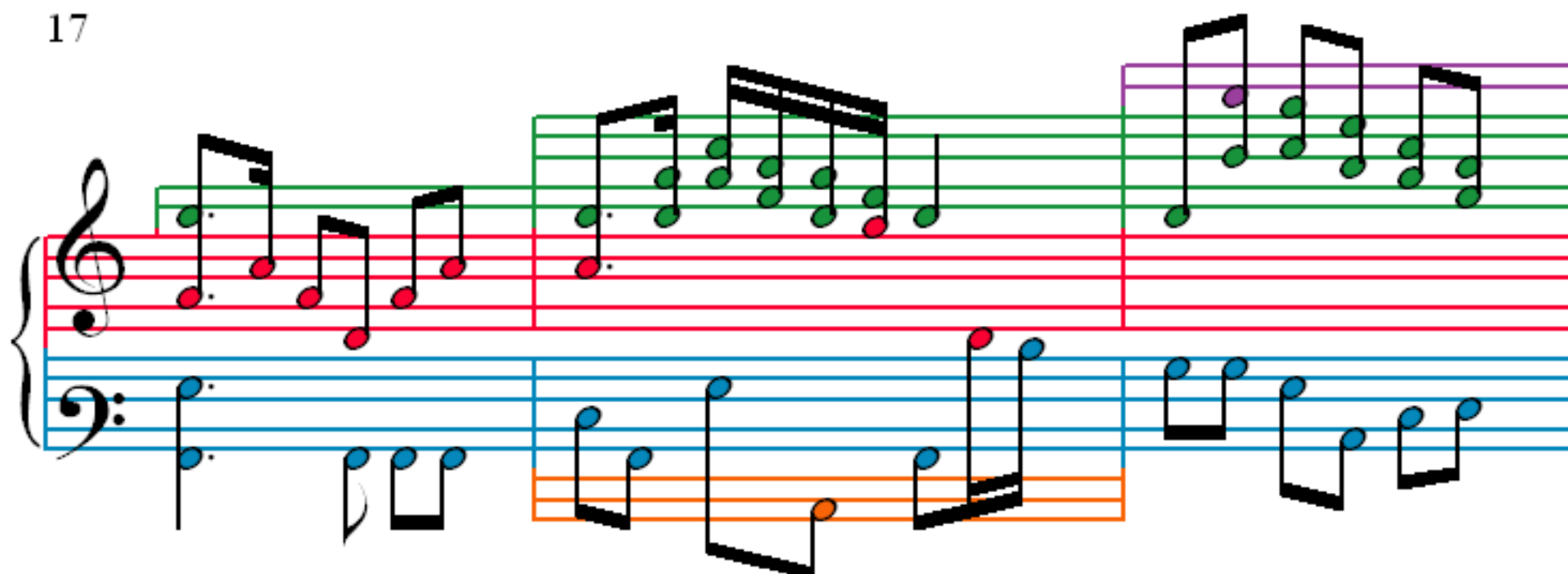
13

Measures 13 and 14 of the musical score. The treble staff features a green line at the top. The bass staff has a blue line at the bottom. An orange line is positioned below the bass staff.

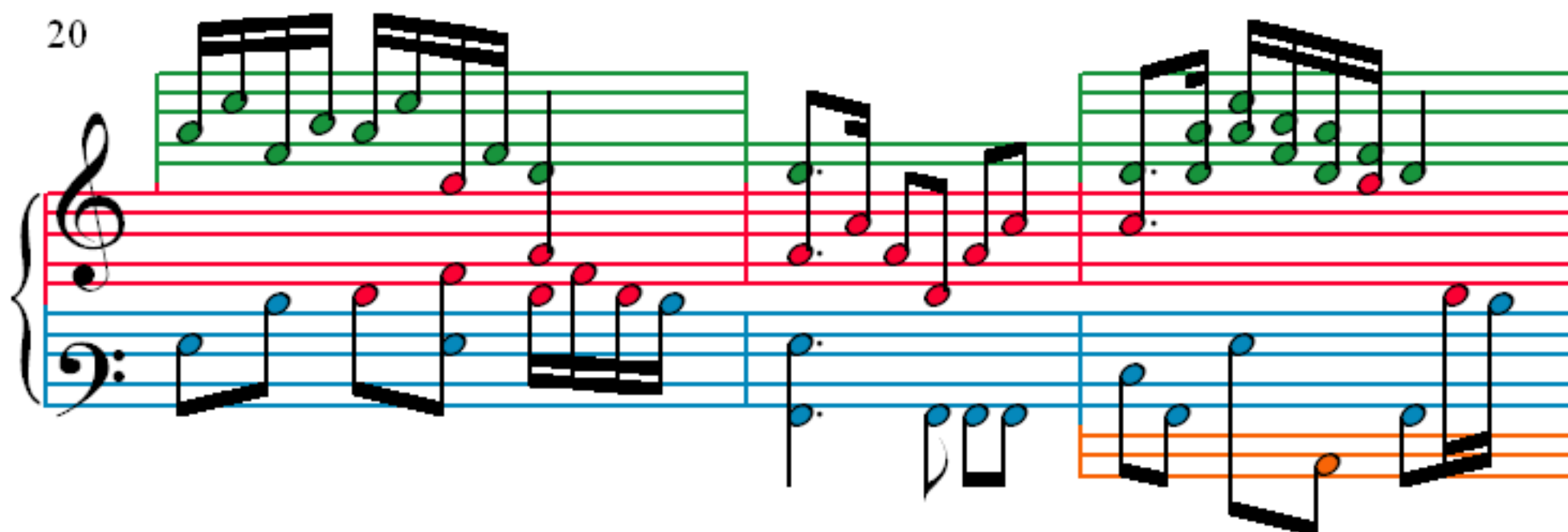
15

Measures 15 and 16 of the musical score. The treble staff features a green line at the top. The bass staff has a blue line at the bottom. An orange line is positioned below the bass staff.

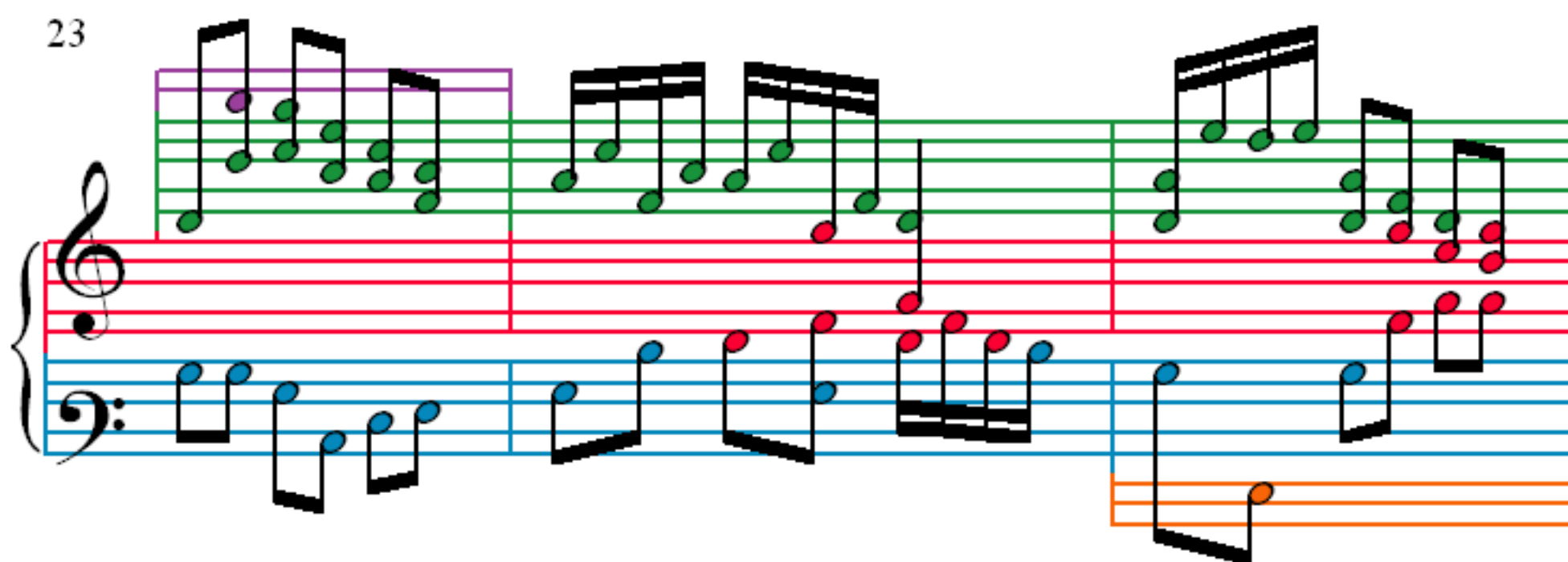
17



20



23



26

