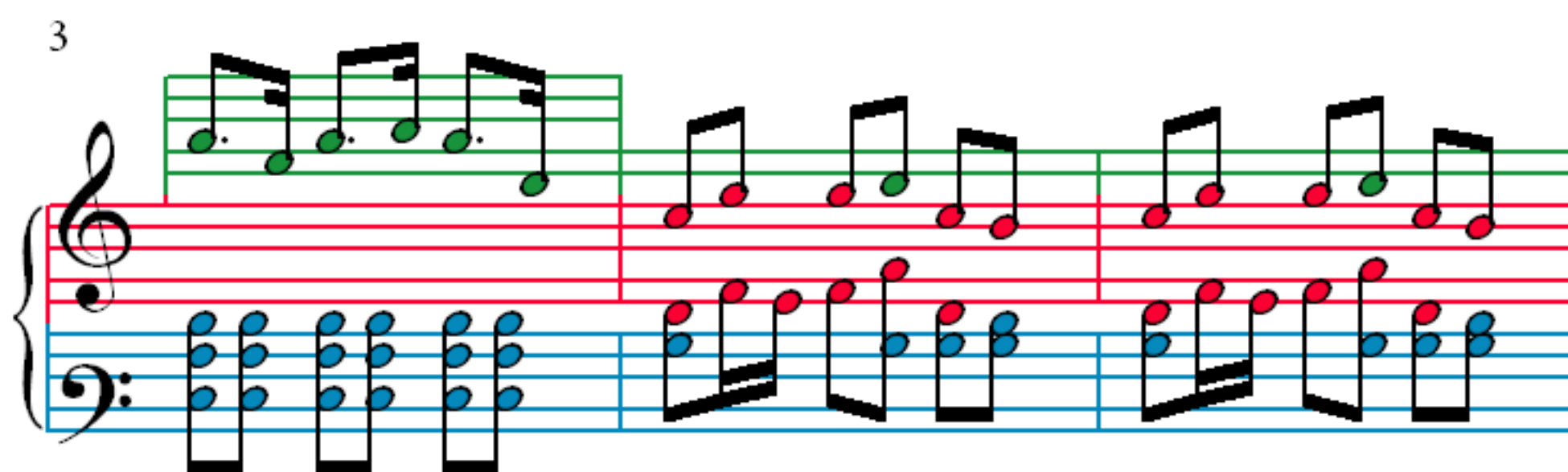
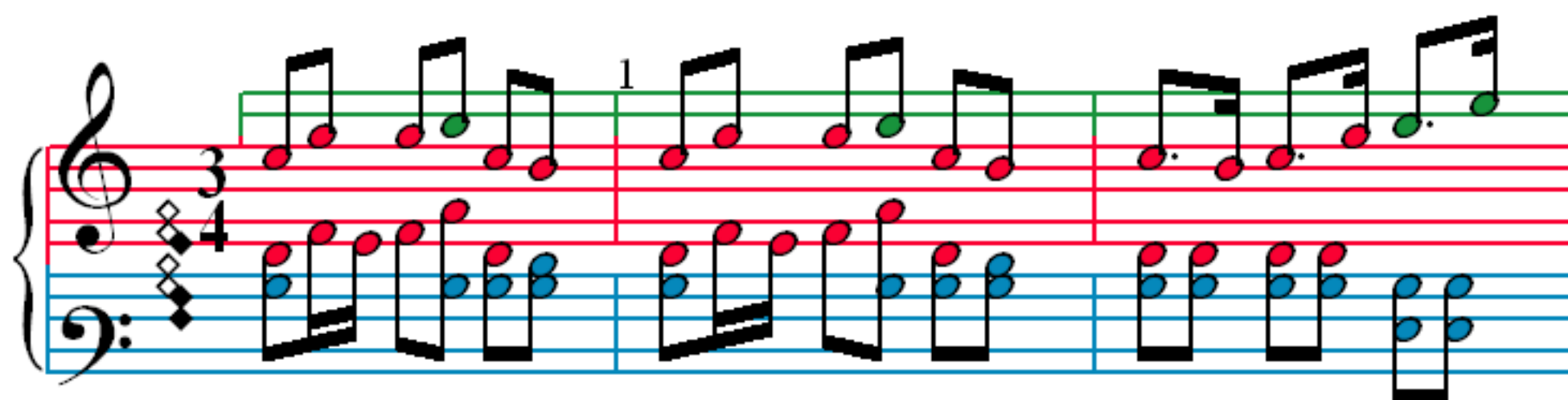


1st Part, Nr 3

Traditioner af Swenska Folk-Dansar

Traditional



12

Measures 12-15: Treble clef (green line) and Bass clef (blue line) contain eighth notes. Red lines are empty.

16

Measures 16-19: Treble clef (green line) and Bass clef (blue line) contain eighth notes. Red lines are empty.

20

Measures 20-23: Treble clef (green line) and Bass clef (blue line) contain eighth notes. Red lines are empty. An orange line appears below the bass clef in measure 21.

24

Measures 24-27: Treble clef (green line) and Bass clef (blue line) contain eighth notes. Red lines are empty. An orange line appears below the bass clef in measure 27.