

The Gladiator

J. P. Sousa (1854–1932)

1

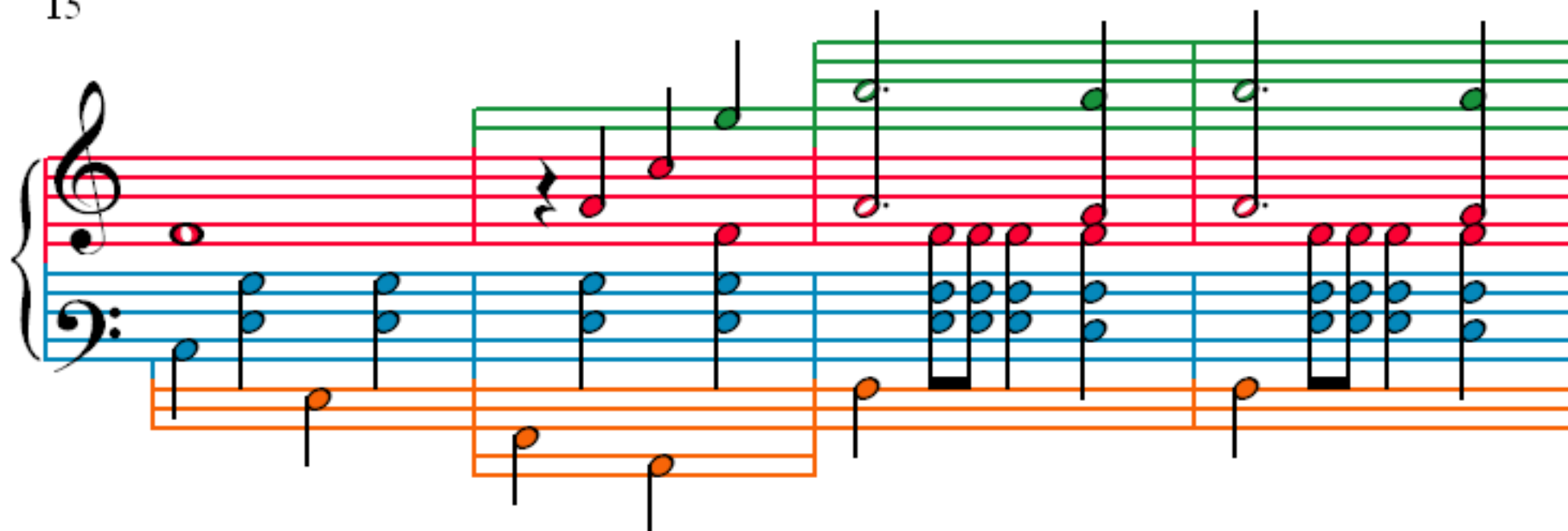
5

8

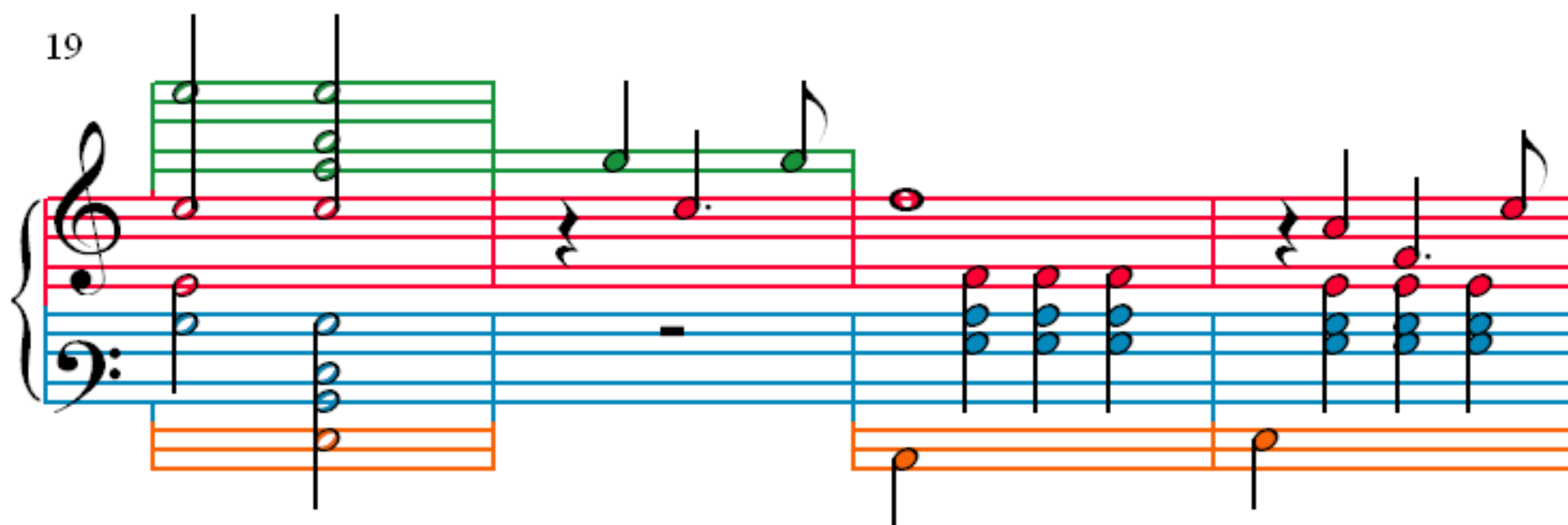
11

The image displays a musical score for the piece 'The Gladiator' by John Philip Sousa. The score is presented in a simplified, color-coded notation format. It consists of four systems of music, each corresponding to a measure number (1, 5, 8, and 11). Each system features a grand staff with a treble and bass clef, and a separate staff below it. The notes are color-coded: green for the treble staff, red for the bass staff, and orange for the lower staff. The notation includes various note values, rests, and accidentals. The piece is in 2/2 time, as indicated by the time signature at the beginning of the first system.

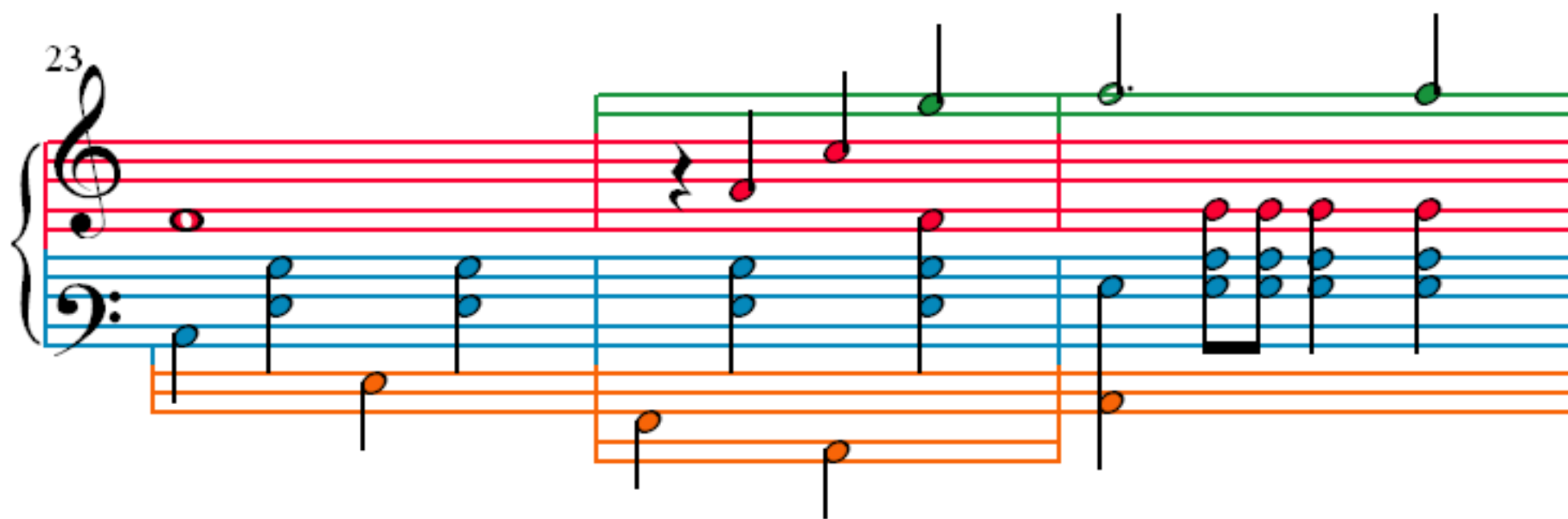
15



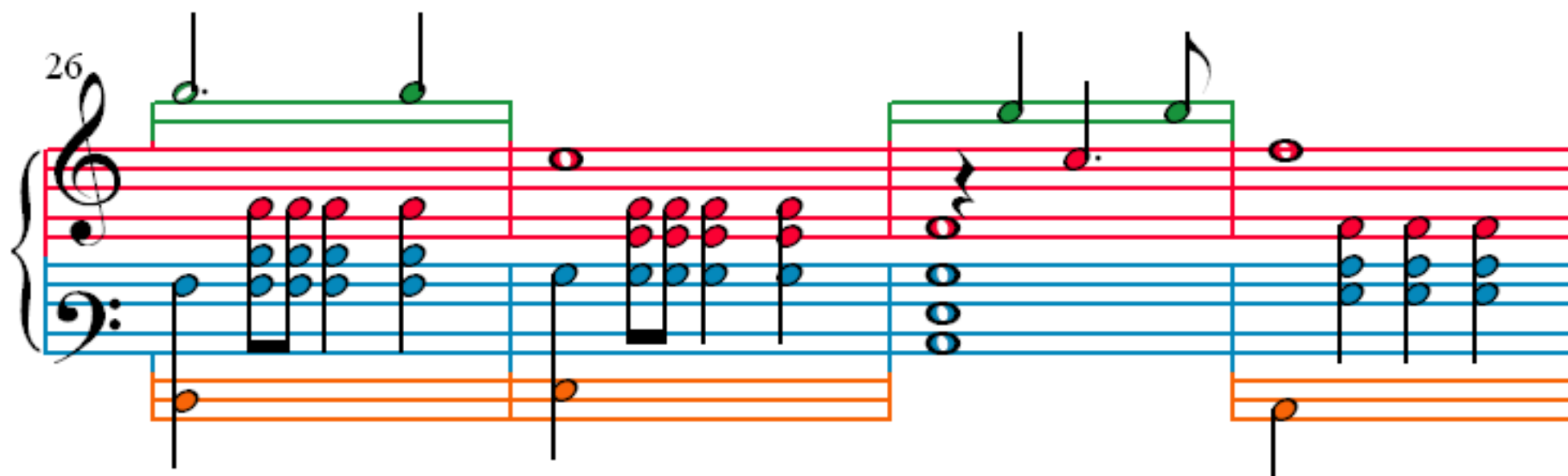
19



23



26



30

Measures 30-33 of the piece. The notation is on a grand staff with treble and bass clefs. The melody is in the treble clef, and the accompaniment is in the bass clef. The notes are color-coded: red for the melody, blue for the bass line, and orange for the right hand. The right hand has a constant eighth-note accompaniment. The left hand has a constant eighth-note accompaniment. The melody consists of eighth and quarter notes.

34

Measures 34-36 of the piece. The notation is on a grand staff with treble and bass clefs. The melody is in the treble clef, and the accompaniment is in the bass clef. The notes are color-coded: red for the melody, blue for the bass line, and orange for the right hand. The right hand has a constant eighth-note accompaniment. The left hand has a constant eighth-note accompaniment. The melody consists of eighth and quarter notes.

37

Measures 37-39 of the piece. The notation is on a grand staff with treble and bass clefs. The melody is in the treble clef, and the accompaniment is in the bass clef. The notes are color-coded: red for the melody, blue for the bass line, and orange for the right hand. The right hand has a constant eighth-note accompaniment. The left hand has a constant eighth-note accompaniment. The melody consists of eighth and quarter notes.

40

Measures 40-43 of the piece. The notation is on a grand staff with treble and bass clefs. The melody is in the treble clef, and the accompaniment is in the bass clef. The notes are color-coded: red for the melody, blue for the bass line, and orange for the right hand. The right hand has a constant eighth-note accompaniment. The left hand has a constant eighth-note accompaniment. The melody consists of eighth and quarter notes.

44

48

51

55

A musical score for a piece titled 'The Gladiator'. The score is written for piano and features four systems of music, each starting at measures 44, 48, 51, and 55. Each system consists of a grand staff with a treble and bass clef, and a separate orange staff below. The notes are color-coded: purple for the right hand, green for the left hand, red for the right hand, and blue for the left hand. The music is in a 2/4 time signature and features a variety of note values, including eighth and sixteenth notes, as well as rests. The score is written in a standard musical notation format with a key signature of one flat (B-flat).

58

System 1 (Measures 58-60): Treble clef with purple and green notes; Bass clef with red, blue, and orange notes. Measure 58: Treble has four eighth notes (purple, green, purple, green); Bass has two eighth notes (red, blue). Measure 59: Treble has two eighth notes (purple, green) and a dotted quarter note (purple); Bass has two eighth notes (red, blue) and a dotted quarter note (blue). Measure 60: Treble has two eighth notes (purple, green) and a dotted quarter note (purple); Bass has two eighth notes (red, blue) and a dotted quarter note (blue).

61

System 2 (Measures 61-63): Treble clef with purple and green notes; Bass clef with red, blue, and orange notes. Measure 61: Treble has two eighth notes (purple, green) and a dotted quarter note (purple); Bass has two eighth notes (red, blue) and a dotted quarter note (blue). Measure 62: Treble has two eighth notes (purple, green) and a dotted quarter note (purple); Bass has two eighth notes (red, blue) and a dotted quarter note (blue). Measure 63: Treble has two eighth notes (purple, green) and a dotted quarter note (purple); Bass has two eighth notes (red, blue) and a dotted quarter note (blue).

64

System 3 (Measures 64-66): Treble clef with purple and green notes; Bass clef with red, blue, and orange notes. Measure 64: Treble has two eighth notes (purple, green) and a dotted quarter note (purple); Bass has two eighth notes (red, blue) and a dotted quarter note (blue). Measure 65: Treble has two eighth notes (purple, green) and a dotted quarter note (purple); Bass has two eighth notes (red, blue) and a dotted quarter note (blue). Measure 66: Treble has two eighth notes (purple, green) and a dotted quarter note (purple); Bass has two eighth notes (red, blue) and a dotted quarter note (blue).

67

System 4 (Measures 67-69): Treble clef with purple and green notes; Bass clef with red, blue, and orange notes. Measure 67: Treble has two eighth notes (purple, green) and a dotted quarter note (purple); Bass has two eighth notes (red, blue) and a dotted quarter note (blue). Measure 68: Treble has two eighth notes (purple, green) and a dotted quarter note (purple); Bass has two eighth notes (red, blue) and a dotted quarter note (blue). Measure 69: Treble has two eighth notes (purple, green) and a dotted quarter note (purple); Bass has two eighth notes (red, blue) and a dotted quarter note (blue).

71

Measures 71-74 of the piece. The notation is presented in a four-staff system. The top staff is a green treble clef staff. The second staff is a red treble clef staff. The third and fourth staves are blue bass clef staves, grouped by a brace on the left. The bottom staff is an orange bass clef staff. The music consists of quarter and eighth notes, with some rests. The notes are color-coded: green for the top staff, red for the second staff, blue for the third and fourth staves, and orange for the bottom staff.

75

Measures 75-78 of the piece. The notation is presented in a four-staff system. The top staff is a green treble clef staff. The second staff is a red treble clef staff. The third and fourth staves are blue bass clef staves, grouped by a brace on the left. The bottom staff is an orange bass clef staff. The music consists of quarter and eighth notes, with some rests. The notes are color-coded: green for the top staff, red for the second staff, blue for the third and fourth staves, and orange for the bottom staff.

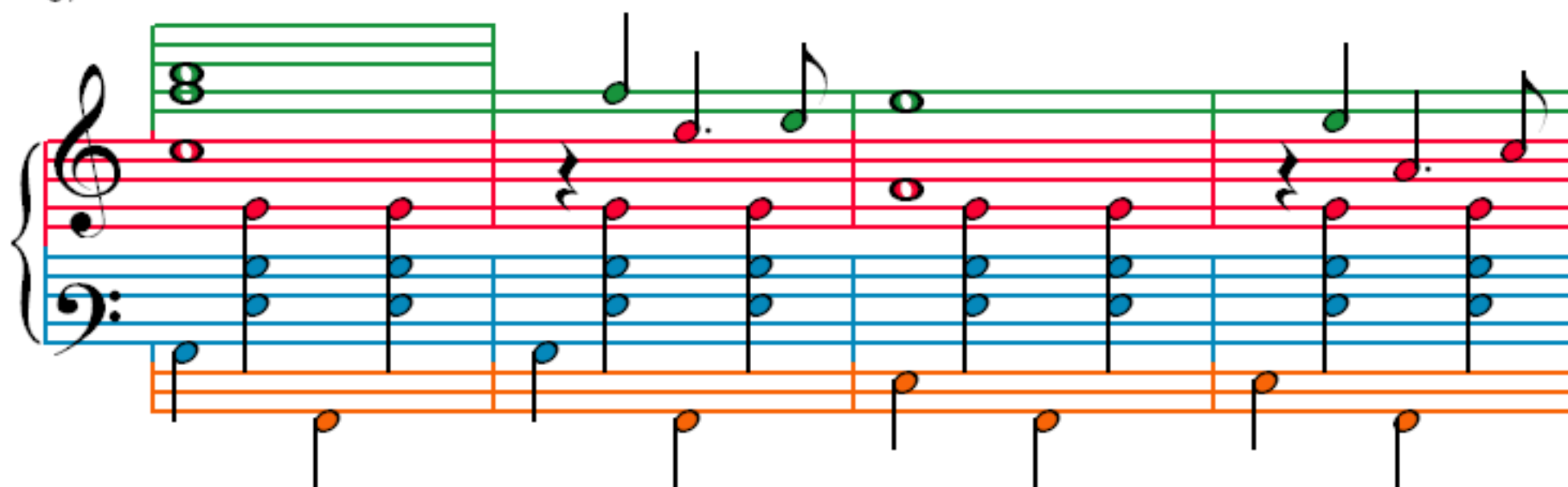
79

Measures 79-82 of the piece. The notation is presented in a four-staff system. The top staff is a green treble clef staff. The second staff is a red treble clef staff. The third and fourth staves are blue bass clef staves, grouped by a brace on the left. The bottom staff is an orange bass clef staff. The music consists of quarter and eighth notes, with some rests. The notes are color-coded: green for the top staff, red for the second staff, blue for the third and fourth staves, and orange for the bottom staff.

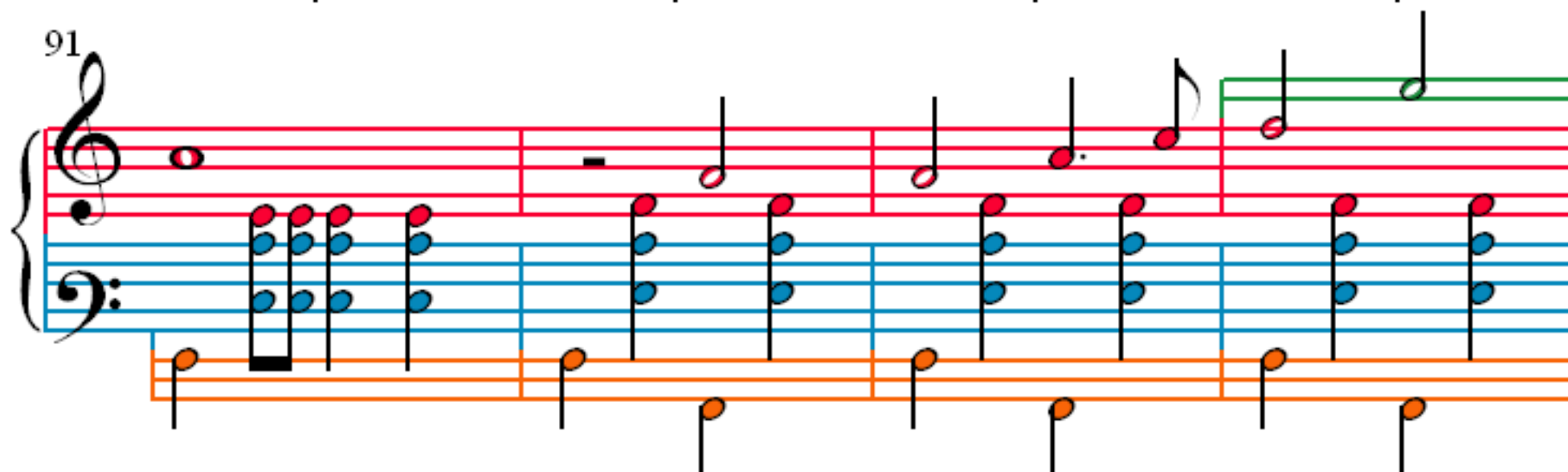
83

Measures 83-86 of the piece. The notation is presented in a four-staff system. The top staff is a green treble clef staff. The second staff is a red treble clef staff. The third and fourth staves are blue bass clef staves, grouped by a brace on the left. The bottom staff is an orange bass clef staff. The music consists of quarter and eighth notes, with some rests. The notes are color-coded: green for the top staff, red for the second staff, blue for the third and fourth staves, and orange for the bottom staff.

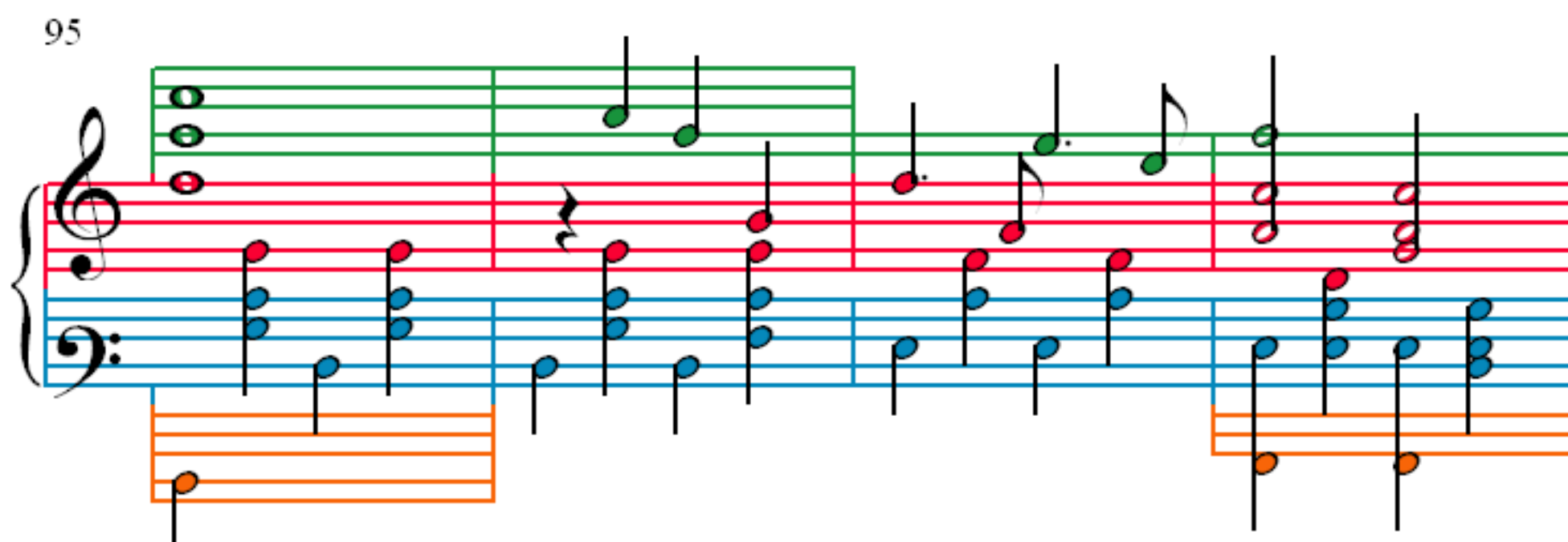
87



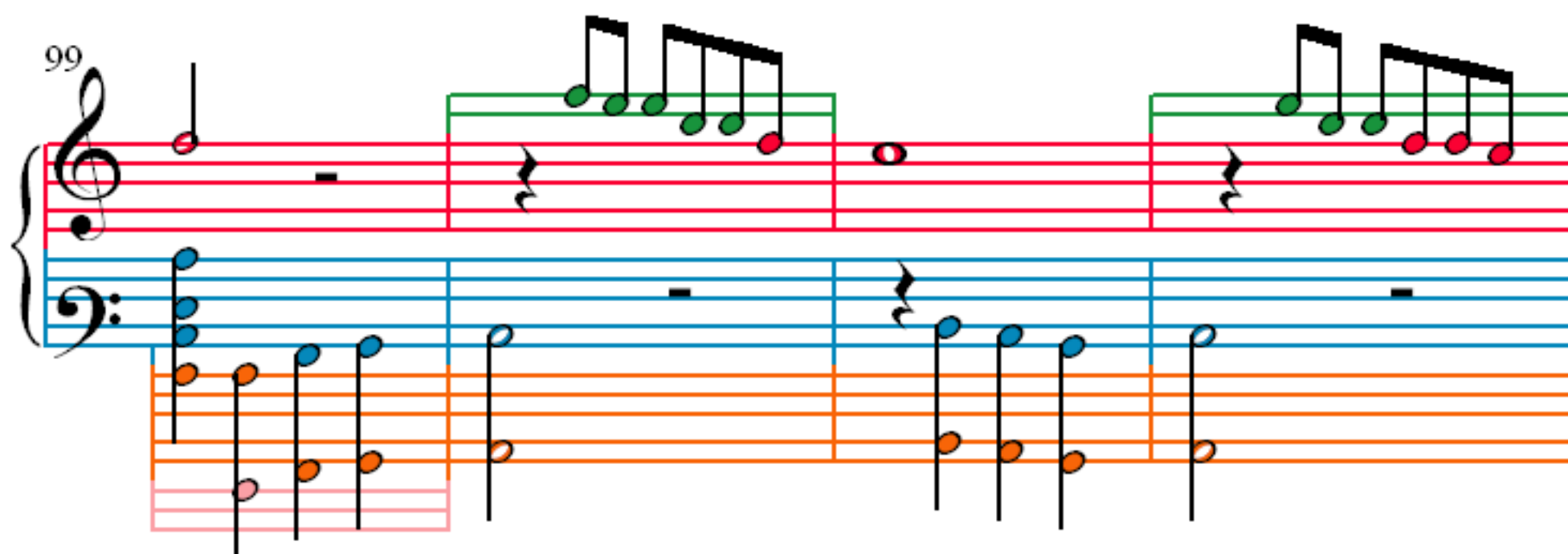
91



95



99



103

107

111

114

Measures 117-120. The system features a grand staff with a treble clef and a bass clef. The treble staff has a purple staff line above it. The bass staff has a blue staff line below it. The music is written in a key with one flat (B-flat). The melody in the treble staff consists of quarter and eighth notes, with some measures containing rests. The bass staff features a steady eighth-note accompaniment. Measure 119 includes a repeat sign.

Measures 121-124. The system continues the musical notation from the previous system. The treble staff has a purple staff line above it. The bass staff has a blue staff line below it. The melody in the treble staff consists of quarter and eighth notes, with some measures containing rests. The bass staff features a steady eighth-note accompaniment. Measure 123 includes a repeat sign.

Measures 125-129. The system continues the musical notation from the previous system. The treble staff has a purple staff line above it. The bass staff has a blue staff line below it. The melody in the treble staff consists of quarter and eighth notes, with some measures containing rests. The bass staff features a steady eighth-note accompaniment. Measure 128 includes a repeat sign.

Measures 130-133. The system continues the musical notation from the previous system. The treble staff has a purple staff line above it. The bass staff has a blue staff line below it. The melody in the treble staff consists of quarter and eighth notes, with some measures containing rests. The bass staff features a steady eighth-note accompaniment. Measure 132 includes a repeat sign.

134

137

140

143

145

147

150

153

156

Measures 156 and 157 of a musical score. The notation is presented on a grand staff with five systems of staves. The systems are color-coded: purple (top), green, red, blue, and orange (bottom). Each system contains a single staff. The notation includes various note values, including half notes, quarter notes, and eighth notes, as well as rests. The key signature is one flat (B-flat).

158

Measures 158, 159, and 160 of a musical score. The notation is presented on a grand staff with five systems of staves. The systems are color-coded: purple (top), green, red, blue, and orange (bottom). Each system contains a single staff. The notation includes various note values, including half notes, quarter notes, and eighth notes, as well as rests. The key signature is one flat (B-flat).

160

Measures 160, 161, and 162 of a musical score. The notation is presented on a grand staff with five systems of staves. The systems are color-coded: purple (top), green, red, blue, and orange (bottom). Each system contains a single staff. The notation includes various note values, including half notes, quarter notes, and eighth notes, as well as rests. The key signature is one flat (B-flat).