

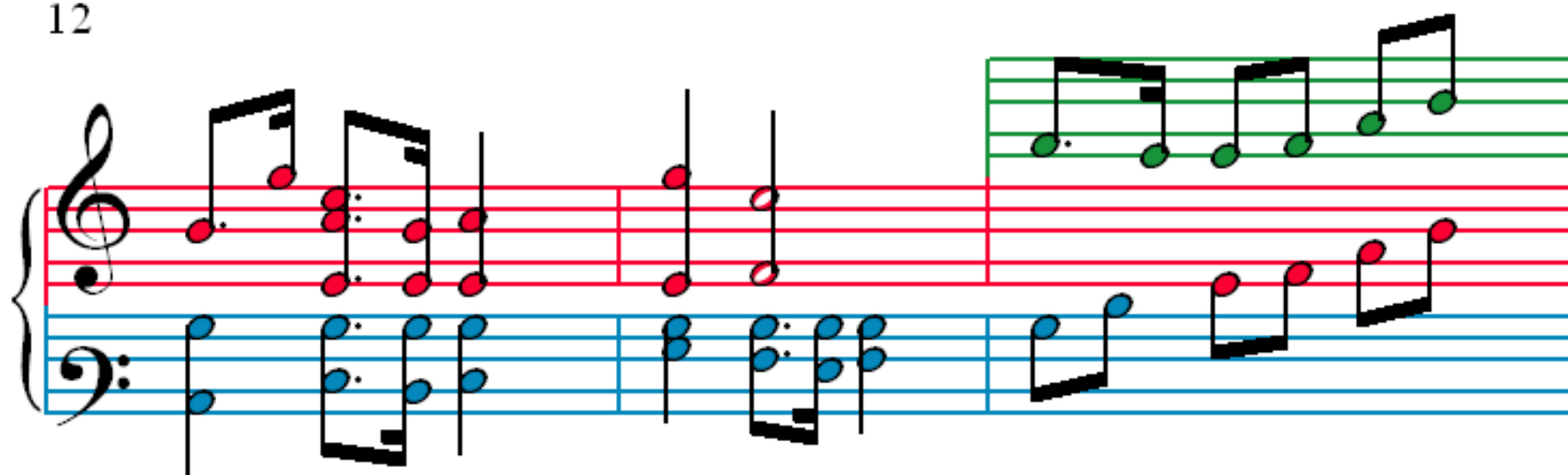
# Curiose Geschichte

## Kinderscenen

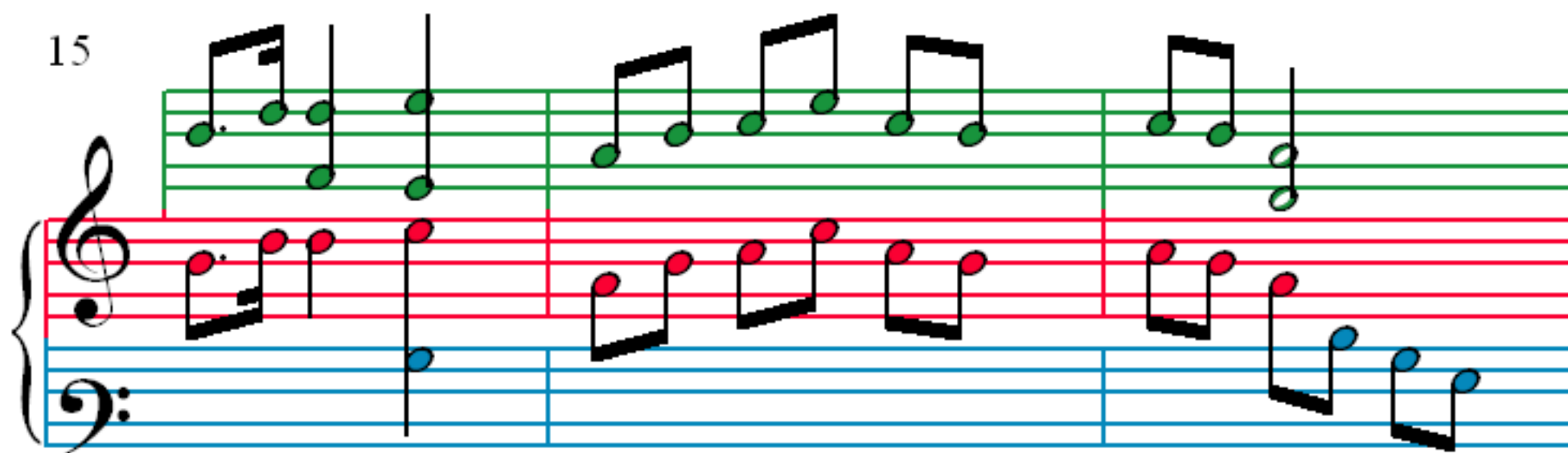
R. Schumann (1810–1856)

The image displays a musical score for the piano accompaniment of 'Curiose Geschichte' by Robert Schumann. The score is organized into four systems, each consisting of a treble and a bass staff. The key signature is one flat (B-flat major or D minor), and the time signature is 3/4. The notation includes various musical symbols such as notes, rests, and bar lines. The first system is marked with a '1' above the treble staff. The second system is marked with a '3' above the treble staff. The third system is marked with a '6' above the treble staff. The fourth system is marked with a '9' above the treble staff. The score is color-coded: the treble staff is red, the bass staff is blue, and the first system has a green line above the treble staff. The second system has an orange line below the bass staff. The third system has a green line above the treble staff. The fourth system has an orange line below the bass staff.

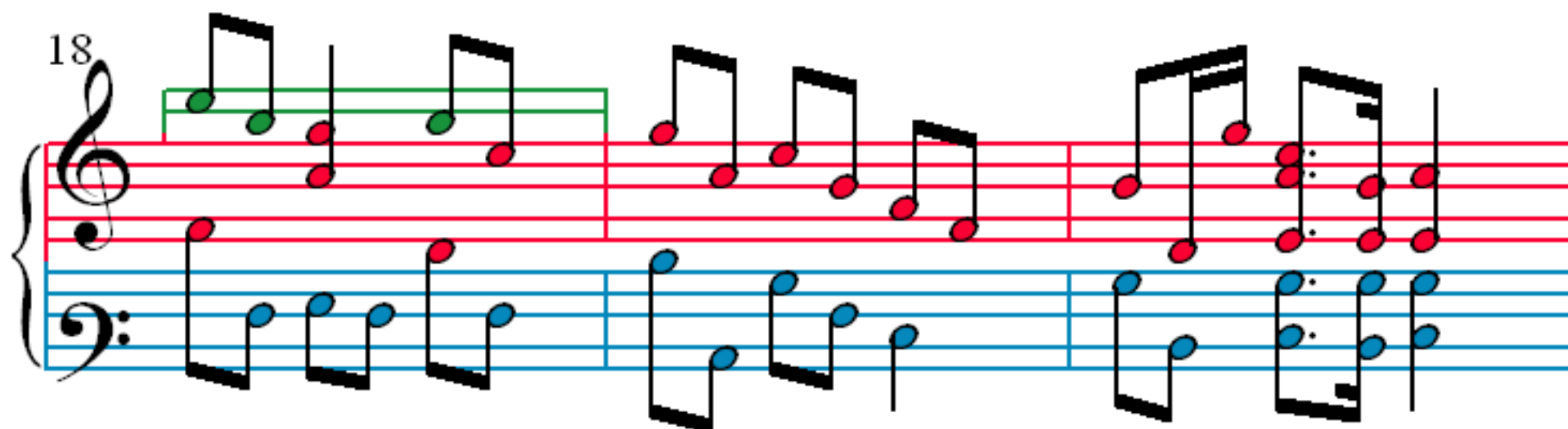
12



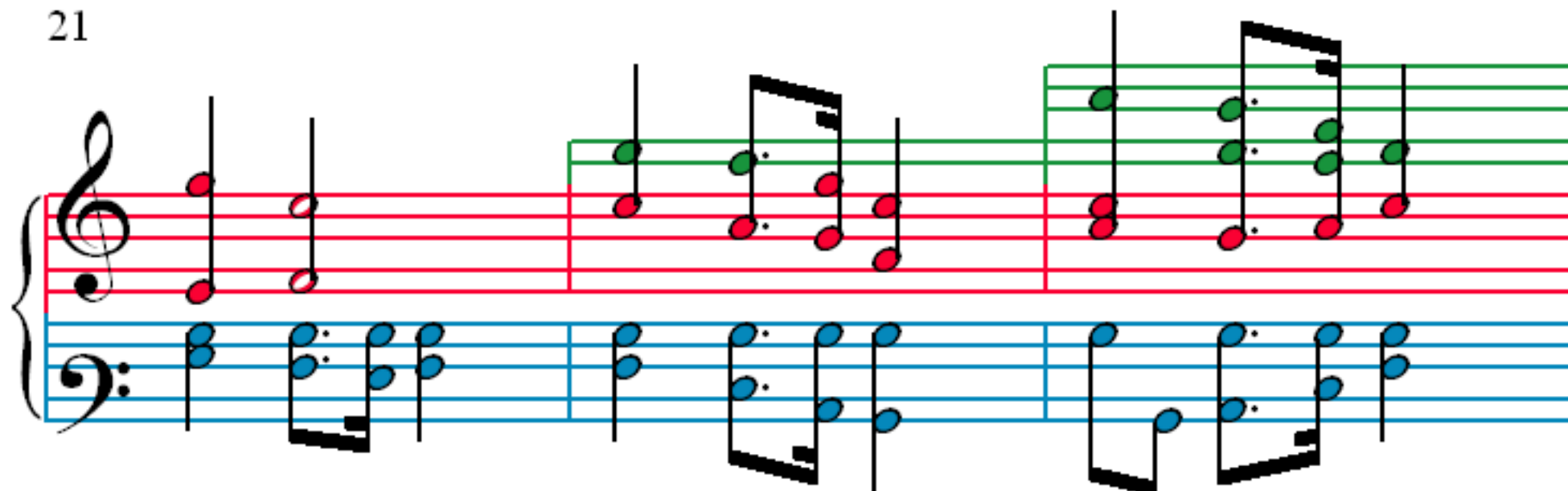
15



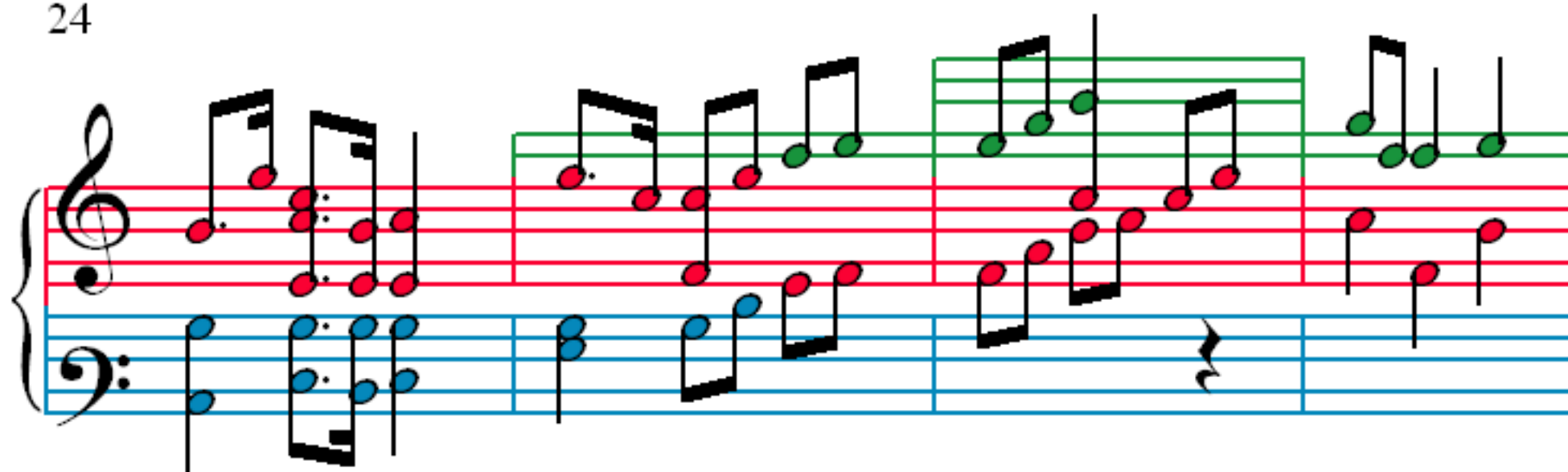
18



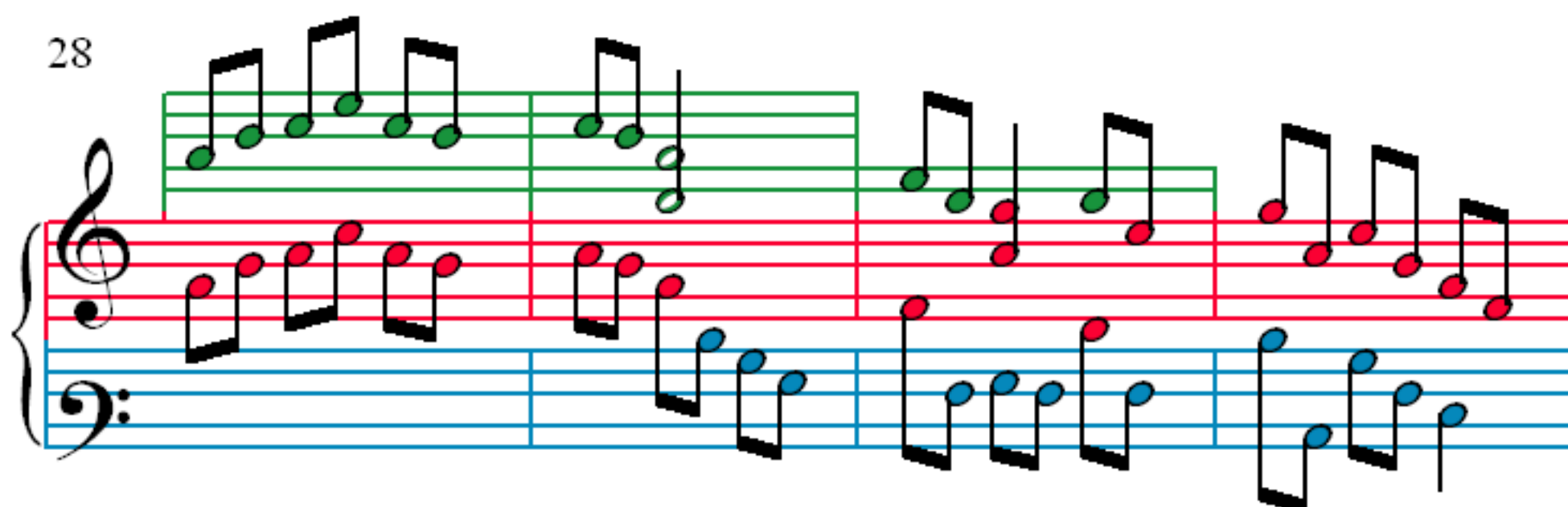
21



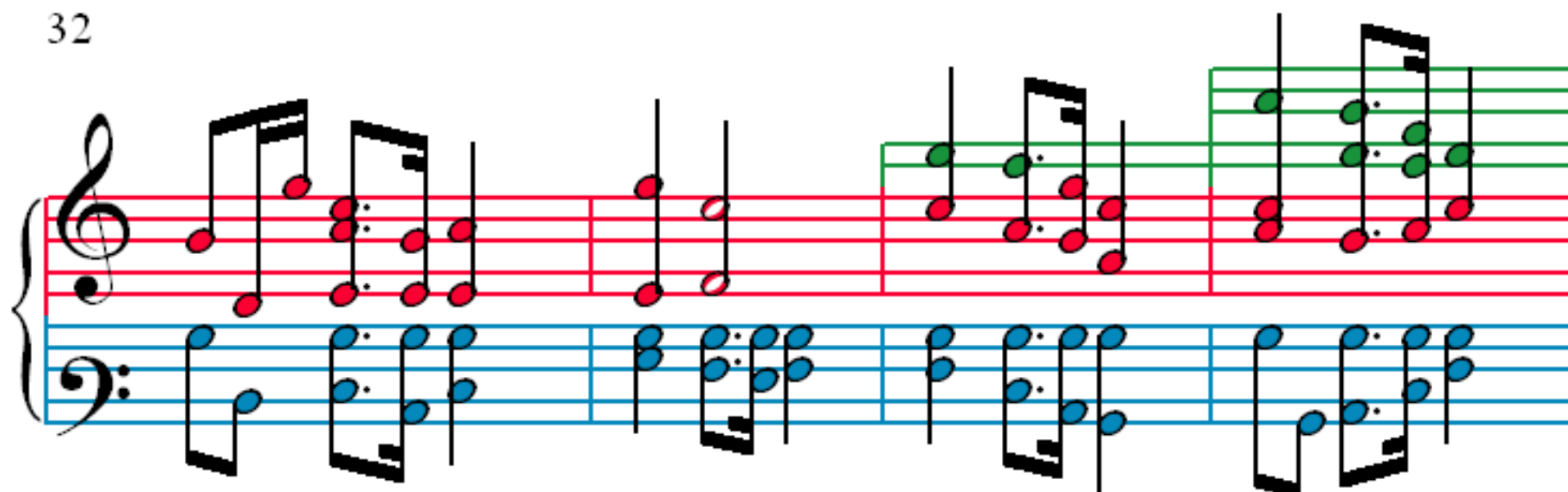
24



28



32



36

