

# Auf dem Strom

F. Schubert (1797–1828)

The image displays a musical score for the song "Auf dem Strom" by Franz Schubert. The score is written for piano and voice. It consists of four systems of staves, each with a piano part (treble and bass clef) and a voice part (treble clef). The piano part is written in 2/4 time and features a continuous eighth-note accompaniment. The voice part is written in the same time signature and features a melody with various intervals and rests. The score includes fingerings (1, 3, 6, 9) and a green bracket indicating a first ending. The piano part is written in a key signature of one flat (B-flat) and the voice part is written in a key signature of one flat (B-flat). The score is written in a notation format that includes various musical symbols such as notes, rests, and accidentals.

12

15

18

21

24

27

30

33

36

39

42

45



48

Measures 48-49. The system includes a grand staff with treble and bass clefs, and a separate five-line staff below. The grand staff has red and blue notes. The lower staff has orange and pink notes. The music is in 2/4 time.

50

Measures 50-51. The system includes a grand staff with treble and bass clefs. The grand staff has red and blue notes. The music is in 2/4 time.

52

Measures 52-53. The system includes a grand staff with treble and bass clefs. The grand staff has red and blue notes. The music is in 2/4 time.

54

Measures 54-55. The system includes a grand staff with treble and bass clefs. The grand staff has red and blue notes. The music is in 2/4 time.

56

58

61

64

66

68

70

72



75

78

81

84



87

90

93

96

99

102

105

108

111

114

117

120



122

124

126

128

130

132

134

136



138

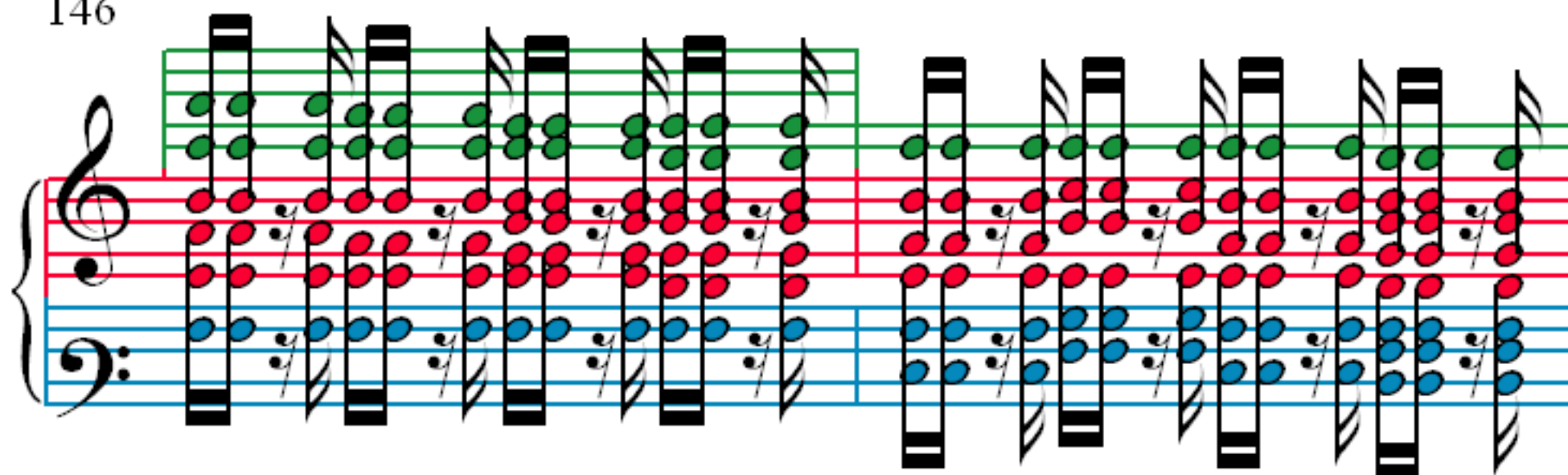
140

142

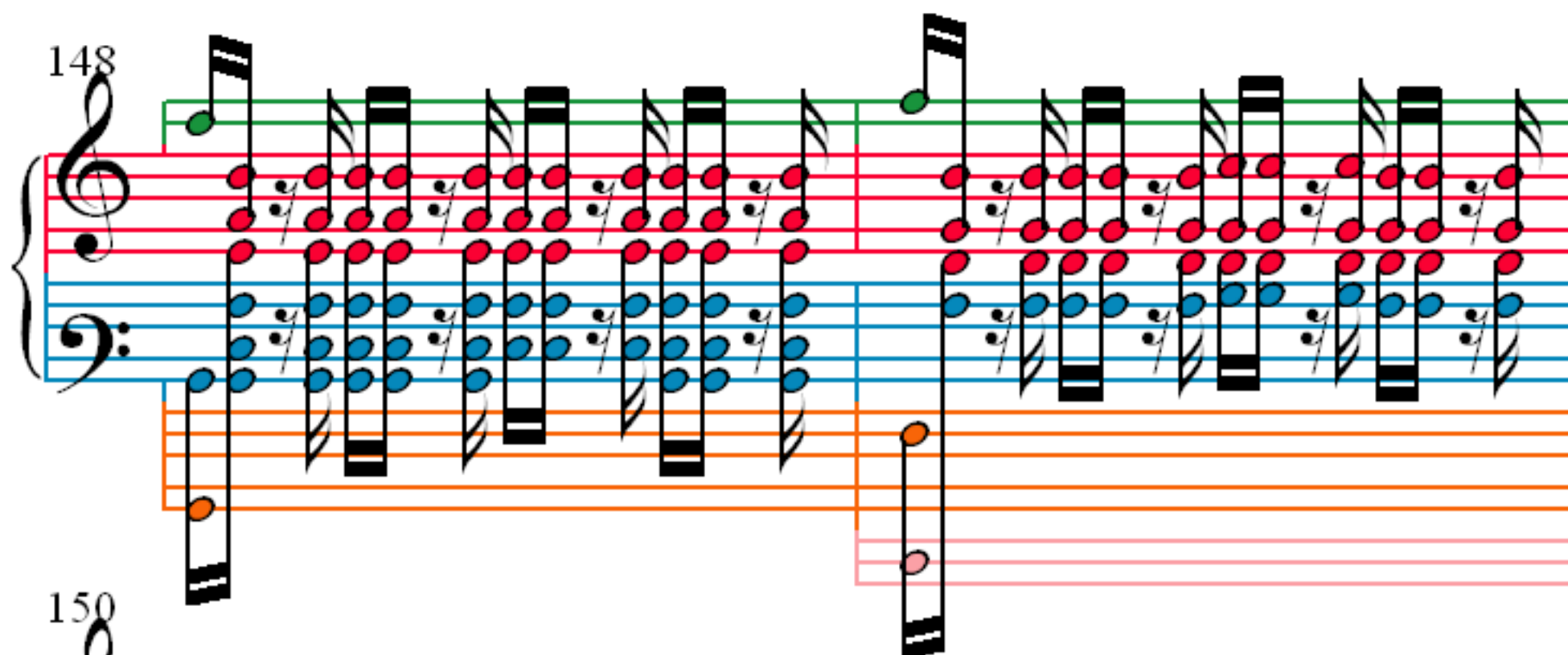
144



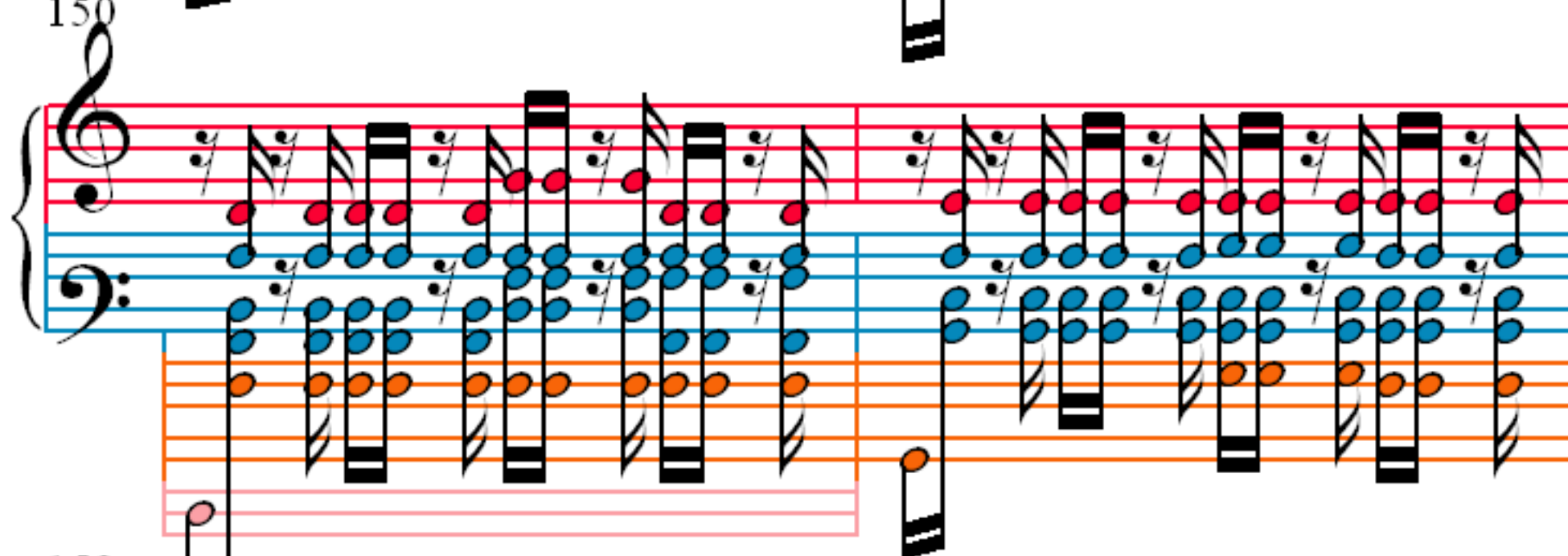
146



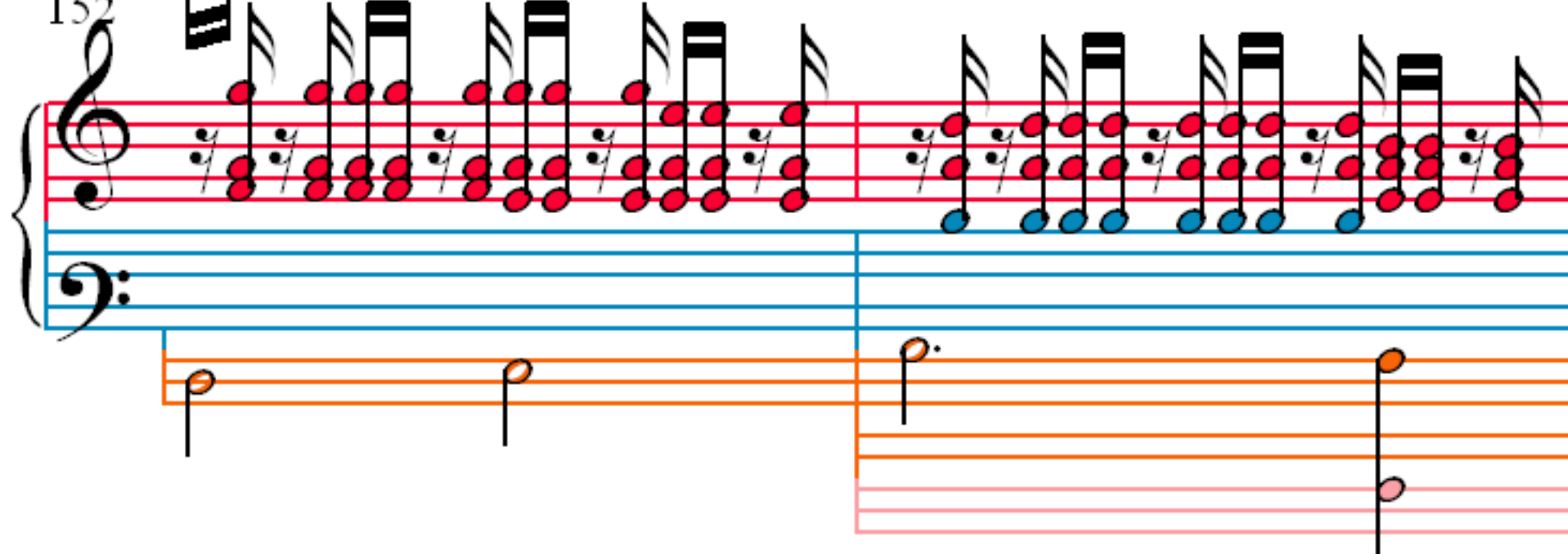
148



150



152



154

Measures 154-156. The system includes a grand staff with treble and bass clefs, and a separate staff with orange lines. The treble staff has red and blue notes, and the bass staff has blue notes. The orange staff has orange notes.

157

Measures 157-159. The system includes a grand staff with treble and bass clefs, and a separate staff with orange lines. The treble staff has red and blue notes, and the bass staff has blue notes. The orange staff has orange notes.

160

Measures 160-162. The system includes a grand staff with treble and bass clefs, and a separate staff with orange lines. The treble staff has red and blue notes, and the bass staff has blue notes. The orange staff has orange notes.

163

Measures 163-165. The system includes a grand staff with treble and bass clefs, and a separate staff with orange lines. The treble staff has red and blue notes, and the bass staff has blue notes. The orange staff has orange notes.

166

169

172

175



178

181

184

187

190

192

194

197

200

202

204

207