

Impromptu in As-dur

F. Schubert (1797–1828)

1

4

7

10

13

16

19

22

25

Measures 25-27. Treble clef: Measure 25 has two green notes (F4, G4) and two red notes (A4, B4). Measure 26 has two green notes (F4, G4) and two red notes (A4, B4). Measure 27 has two green notes (F4, G4) and two red notes (A4, B4). Bass clef: Measure 25 has two blue notes (C3, D3). Measure 26 has two blue notes (C3, D3). Measure 27 has two blue notes (C3, D3). Vertical lines connect notes across staves.

28

Measures 28-30. Treble clef: Measure 28 has two green notes (F4, G4) and two red notes (A4, B4). Measure 29 has two green notes (F4, G4) and two red notes (A4, B4). Measure 30 has two green notes (F4, G4) and two red notes (A4, B4). Bass clef: Measure 28 has two blue notes (C3, D3). Measure 29 has two blue notes (C3, D3). Measure 30 has two blue notes (C3, D3). Vertical lines connect notes across staves.

31

Measures 31-33. Treble clef: Measure 31 has two purple notes (F4, G4) and two green notes (A4, B4). Measure 32 has two purple notes (F4, G4) and two green notes (A4, B4). Measure 33 has two purple notes (F4, G4) and two green notes (A4, B4). Bass clef: Measure 31 has two blue notes (C3, D3). Measure 32 has two blue notes (C3, D3). Measure 33 has two blue notes (C3, D3). Vertical lines connect notes across staves.

34

Measures 34-36. Treble clef: Measure 34 has two purple notes (F4, G4) and two green notes (A4, B4). Measure 35 has two purple notes (F4, G4) and two green notes (A4, B4). Measure 36 has two purple notes (F4, G4) and two green notes (A4, B4). Bass clef: Measure 34 has two blue notes (C3, D3). Measure 35 has two blue notes (C3, D3). Measure 36 has two blue notes (C3, D3). Vertical lines connect notes across staves.

37

40

43

46

49

52

55

58

61

64

67

70

73

Measures 73-75. Treble clef has a green line above the staff. Notes are red in the treble and blue in the bass. An orange line is below the bass staff.

76

Measures 76-78. Treble clef has a green line above the staff. Notes are red in the treble and blue in the bass. An orange line is below the bass staff.

79

Measures 79-81. Treble clef has a green line above the staff. Notes are red in the treble and blue in the bass. An orange line is below the bass staff.

82

Measures 82-84. Treble clef has a green line above the staff. Notes are red in the treble and blue in the bass. An orange line is below the bass staff.

85

88

91

94

97

Measures 97-99. The right hand features a continuous eighth-note scale in purple and green. The left hand has a simple bass line with red and blue notes.

100

Measures 100-102. The right hand continues the eighth-note scale in green and red. The left hand has a simple bass line with red and blue notes.

103

Measures 103-105. The right hand features a continuous eighth-note scale in red and blue. The left hand has a simple bass line with blue notes. An orange box highlights the first and last measures.

106

Measures 106-108. The right hand has a simple melody in red. The left hand features a continuous eighth-note scale in blue and orange. An orange box highlights the first and last measures.

109

112

115

118

121

Measures 121-123. Treble clef: single notes on the first line. Bass clef: continuous eighth-note pattern. Measure 123 includes a key signature change to one sharp (F#) indicated by a key signature symbol.

124

Measures 124-126. Treble clef: single notes on the first line. Bass clef: continuous eighth-note pattern.

127

Measures 127-129. Treble clef: single notes on the first line. Bass clef: continuous eighth-note pattern. Measure 129 includes a key signature change to one sharp (F#) indicated by a key signature symbol.

130

Measures 130-132. Treble clef: single notes on the first line. Bass clef: continuous eighth-note pattern. Measure 132 includes a key signature change to one sharp (F#) indicated by a key signature symbol.

133

Measures 133-135. Treble clef: Green notes. Bass clef: Orange and blue notes with pink highlights.

136

Measures 136-138. Treble clef: Green notes. Bass clef: Blue notes with pink highlights.

139

Measures 139-141. Treble clef: Red notes. Bass clef: Blue notes with orange highlights.

142

Measures 142-144. Treble clef: Purple notes. Bass clef: Blue notes with orange highlights.

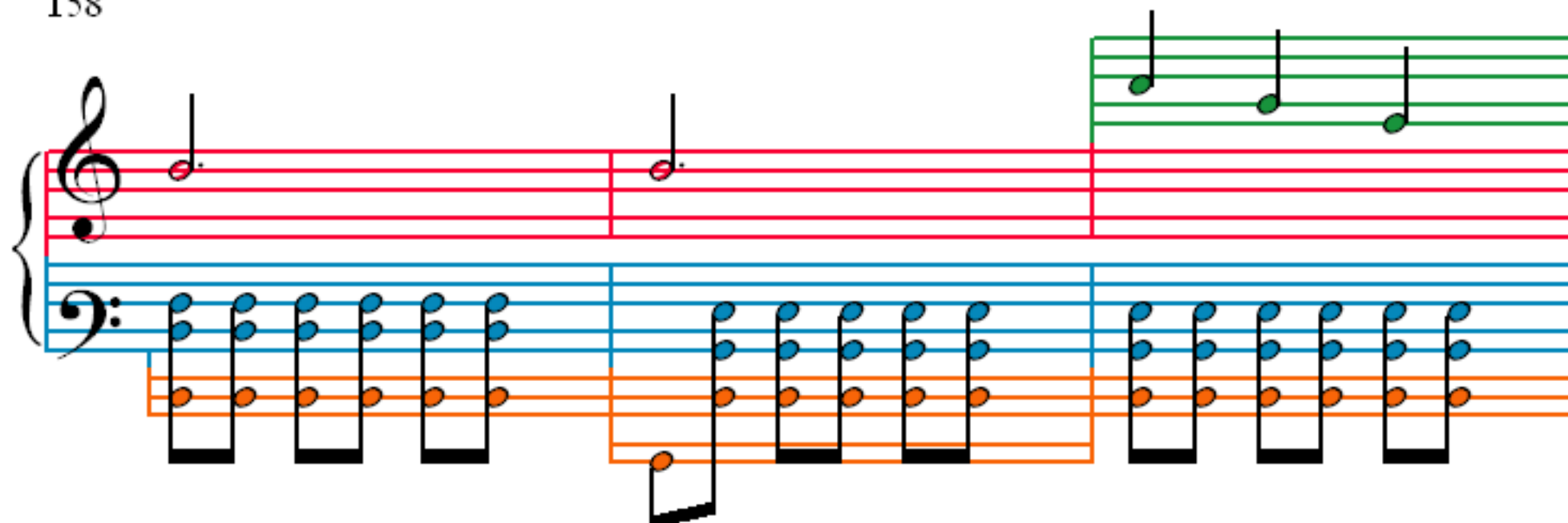
145

149

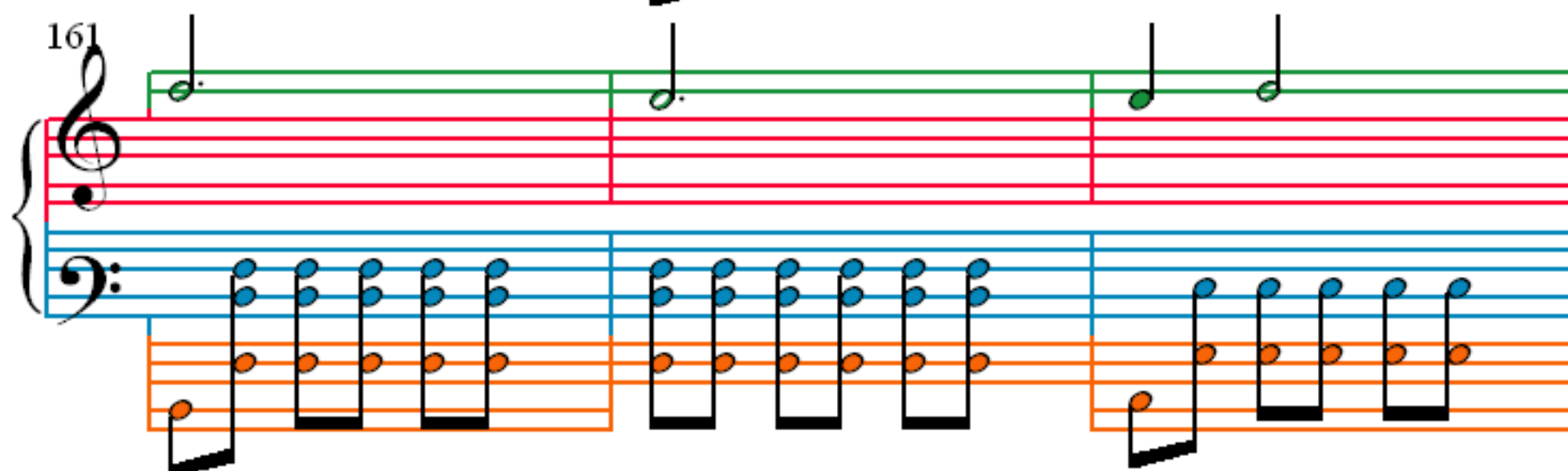
152

155

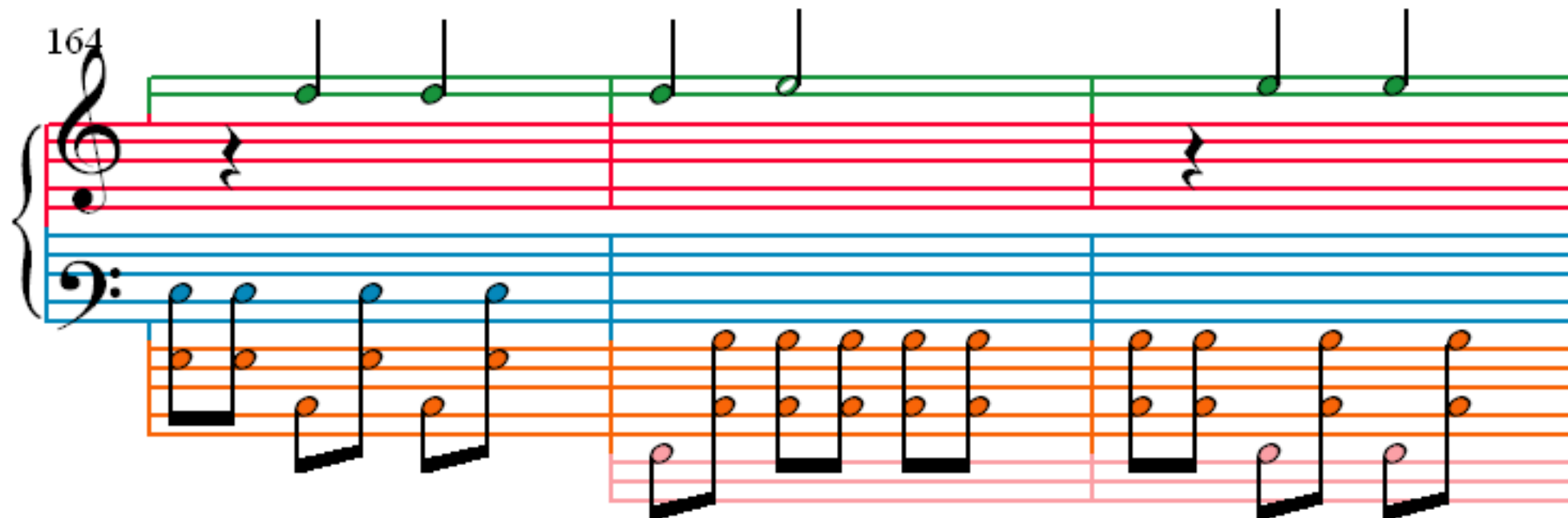
158



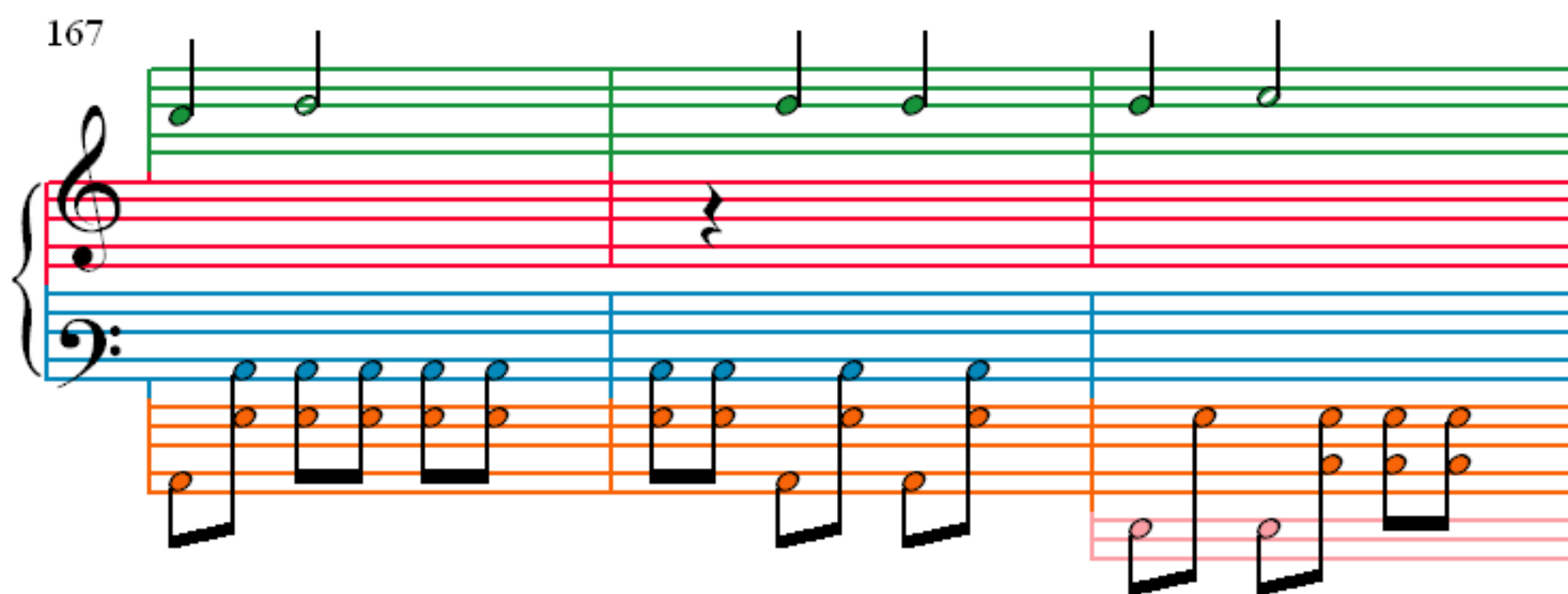
161



164



167



170

173

176

178

181

Measures 181-183 of a piano piece. The score is written for a grand staff with treble and bass clefs. The treble staff has a purple line above it. The bass staff has a blue line above it. The music features a sequence of eighth notes in the treble and a sequence of eighth notes in the bass. The notes are colored: purple, green, and red. The bass staff has a pink line below it.

184

Measures 184-185 of a piano piece. The score is written for a grand staff with treble and bass clefs. The treble staff has a purple line above it. The bass staff has a blue line above it. The music features a sequence of eighth notes in the treble and a sequence of eighth notes in the bass. The notes are colored: purple, green, and red. The bass staff has a pink line below it.

186

Measures 186-188 of a piano piece. The score is written for a grand staff with treble and bass clefs. The treble staff has a purple line above it. The bass staff has a blue line above it. The music features a sequence of eighth notes in the treble and a sequence of eighth notes in the bass. The notes are colored: purple, green, and red. The bass staff has a pink line below it.

189

Measures 189-191 of a piano piece. The score is written for a grand staff with treble and bass clefs. The treble staff has a purple line above it. The bass staff has a blue line above it. The music features a sequence of eighth notes in the treble and a sequence of eighth notes in the bass. The notes are colored: purple, green, and red. The bass staff has a pink line below it.

192

196

200

204

208

212

216

219

222

The musical score for Example 10.10 is presented in three measures. The vocal line, written on a single staff with a treble clef, features a melody of eighth notes. The piano accompaniment is written on two staves: the right hand on a treble clef staff and the left hand on a bass clef staff. The piano part includes a steady eighth-note accompaniment in the right hand and a simple bass line in the left hand. The notes are color-coded: purple for the vocal line, green for the piano right hand, red for the piano left hand, and blue for the piano left hand. The piano part includes a double bar line in the second measure, indicating a change in the bass line.

225

The musical score for Example 10.10 is presented in three measures. The vocal line is written on a single staff with a treble clef. The piano accompaniment is written on two staves: a treble staff and a bass staff. The piano part features a steady eighth-note accompaniment in the right hand and a bass line in the left hand. The notes are color-coded: green for the vocal line, red for the piano right hand, and blue for the piano left hand. The piano part includes a double bar line in the second measure, indicating a change in the bass line.

228

The musical score for Example 12-12 is presented in three measures. The melody, written in the treble clef, consists of a series of eighth notes (G4, A4, B4, C5, B4, A4, G4) followed by a quarter note (F#4). The piano accompaniment, written in the bass clef, consists of a series of eighth notes (F#3, E3, D3, C3, B2, A2, G2) followed by a quarter note (F#2). The score is color-coded: the melody is green, the piano accompaniment is red, and the bass line is blue.

231

Figure 10. Example 1

234

Measures 234-236 of a piano piece. The score is written for a grand staff with treble and bass clefs. The right hand features a complex melodic line with many beamed sixteenth notes, some of which are highlighted in purple. The left hand provides a steady accompaniment with eighth notes. A blue line is visible in the bass staff, and an orange line is visible in the treble staff.

237

Measures 237-239 of a piano piece. The right hand continues the melodic line with beamed sixteenth notes, some highlighted in purple. The left hand accompaniment remains consistent. A blue line is visible in the bass staff, and an orange line is visible in the treble staff.

240

Measures 240-242 of a piano piece. The right hand continues the melodic line with beamed sixteenth notes, some highlighted in purple. The left hand accompaniment remains consistent. A blue line is visible in the bass staff, and an orange line is visible in the treble staff.

243

Measures 243-245 of a piano piece. The right hand continues the melodic line with beamed sixteenth notes, some highlighted in purple. The left hand accompaniment remains consistent. A blue line is visible in the bass staff, and an orange line is visible in the treble staff.

246

250

254

257

260

Measures 260-262. The treble clef staff contains ascending and descending eighth-note patterns in green and red. The bass clef staff contains blue notes, including a whole note and a half note. An orange staff is present below the bass staff, containing a whole note and a half note.

263

Measures 263-265. The treble clef staff contains ascending and descending eighth-note patterns in green and purple. The bass clef staff contains blue notes, including a whole note and a half note. An orange staff is present below the bass staff, containing a whole note and a half note.

266

Measures 266-268. The treble clef staff contains ascending and descending eighth-note patterns in purple and green. The bass clef staff contains blue notes, including a whole note and a half note. An orange staff is present below the bass staff, containing a whole note and a half note.

269

Measures 269-271. The treble clef staff contains ascending and descending eighth-note patterns in green and red. The bass clef staff contains blue notes, including a whole note and a half note. An orange staff is present below the bass staff, containing a whole note and a half note.

272

Measures 272-275. The right hand features a continuous eighth-note arpeggiated pattern, primarily on purple and green notes, with a yellow note in measure 275. The left hand plays a simple bass line with red and blue notes.

276

Measures 276-279. The right hand continues the eighth-note arpeggiated pattern with purple and green notes. The left hand continues the bass line with red and blue notes.

280

Measures 280-283. The right hand continues the eighth-note arpeggiated pattern with purple and green notes. The left hand continues the bass line with red and blue notes.

284

Measures 284-287. The right hand continues the eighth-note arpeggiated pattern with purple and green notes. The left hand continues the bass line with red and blue notes.

288

291

294

299

304

307

310

313

316

Measures 316-317. The right hand features a descending eighth-note scale in purple and green. The left hand provides a simple bass line with red and blue notes.

318

Measures 318-320. The right hand continues the descending eighth-note scale in purple and green. The left hand continues the bass line with red and blue notes.

321

Measures 321-323. The right hand plays a descending eighth-note scale in purple and green. The left hand plays a bass line with red and blue notes, including some rests.

324

Measures 324-326. The right hand plays a descending eighth-note scale in purple and green. The left hand plays a bass line with red and blue notes, including some rests. An orange line appears at the bottom of the left hand staff in measures 325-326.