

Impromptu in C-Moll

F. Schubert (1797–1828)

1

Measures 1-3 of the Impromptu in C-Moll. The piece is in 4/4 time. The right hand (treble clef) features a melody with dotted rhythms and eighth notes, while the left hand (bass clef) provides a simple accompaniment with whole notes and rests. A small inset shows a single note on a five-line staff.

4

Measures 4-6. The right hand continues the melodic line with more complex rhythmic patterns, including beamed eighth notes. The left hand enters with a steady eighth-note accompaniment.

7

Measures 7-9. The right hand features a series of descending eighth-note runs. The left hand continues the eighth-note accompaniment, with some measures featuring beamed eighth notes.

10

Measures 10-13. The right hand continues the melodic development with various rhythmic figures. The left hand maintains the eighth-note accompaniment, with some measures featuring beamed eighth notes.

14

Measures 14-16. Treble clef has a green line on the top staff. Bass clef has a blue line on the bottom staff. An orange line appears on the bottom staff in measure 16.

17

Measures 17-19. Treble clef has a green line on the top staff. Bass clef has a blue line on the bottom staff.

20

Measures 20-22. Treble clef has a green line on the top staff. Bass clef has a blue line on the bottom staff. An orange line appears on the bottom staff in measure 22.

23

Measures 23-25. Treble clef has a green line on the top staff. Bass clef has a blue line on the bottom staff. An orange line appears on the bottom staff in measure 25.

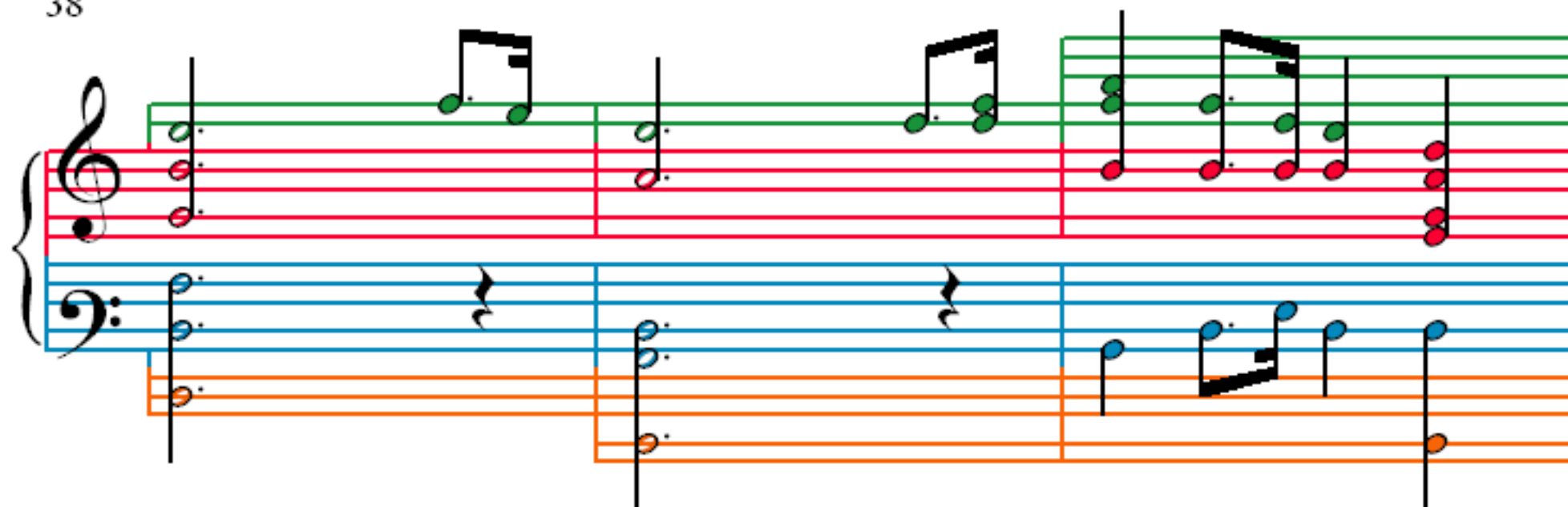
26

29

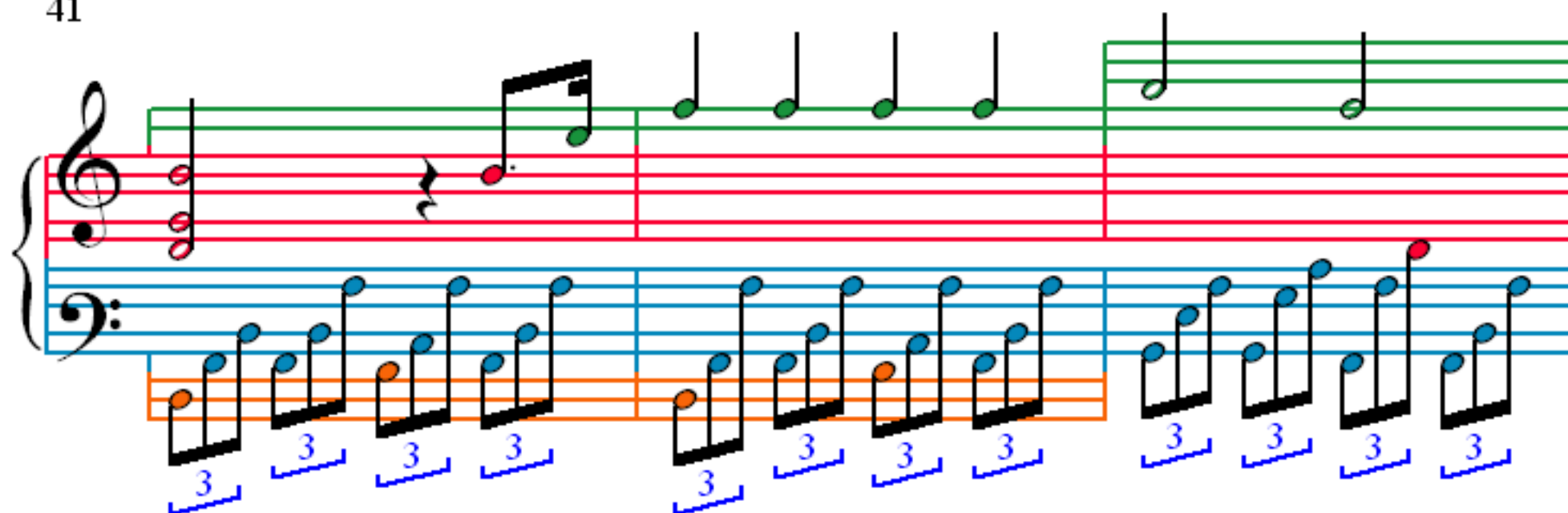
32

35

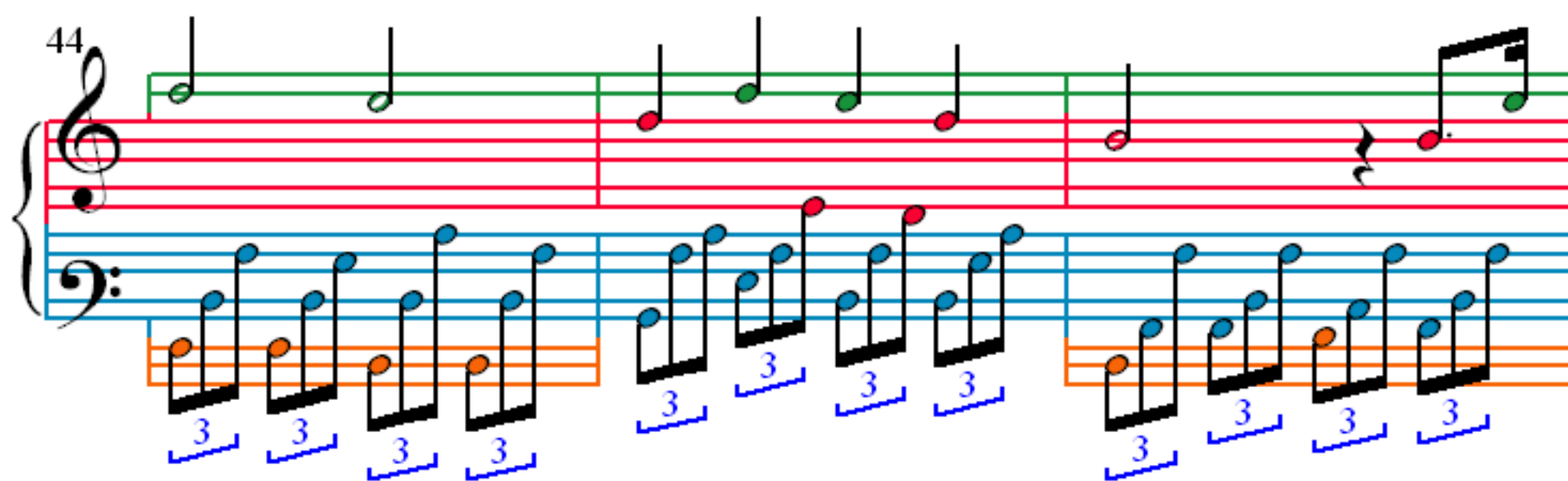
38



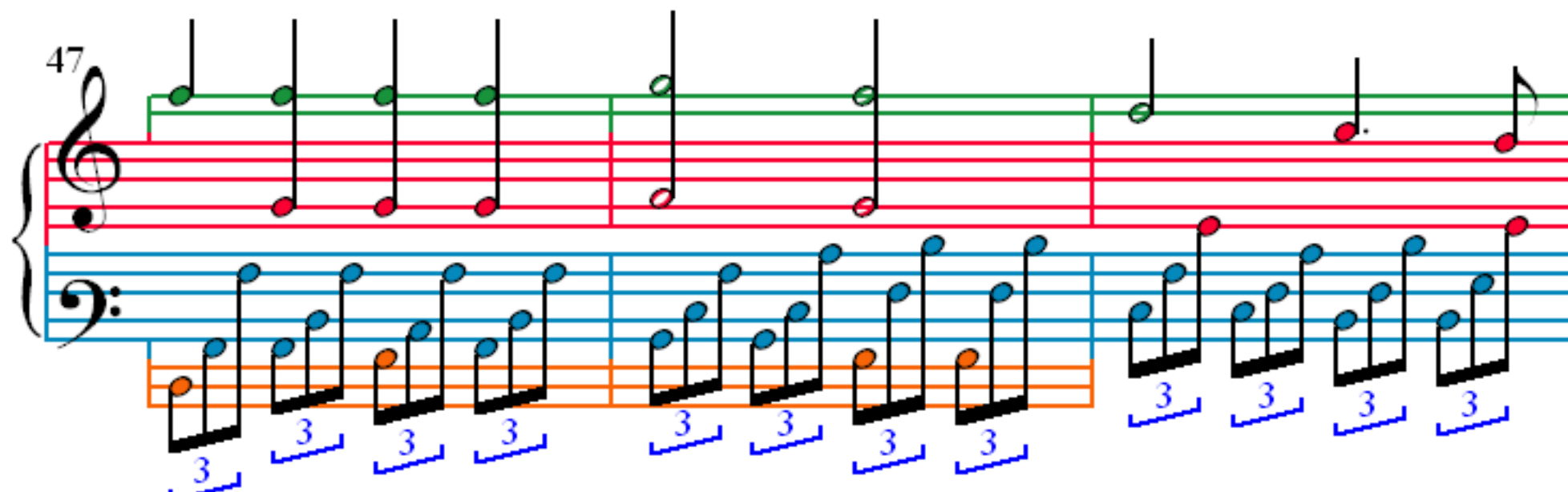
41



44



47



50

53

56

59

62

65

68

71

74

Measures 74 and 75 of a musical score. The treble clef staff contains a melody with eighth and quarter notes. The bass clef staff features a complex accompaniment with triplets of eighth notes and sixteenth notes, indicated by blue brackets and the number '3'. The notes are color-coded: green for the melody and blue for the accompaniment. The system is divided into two measures by a bar line.

76

Measures 76 and 77 of a musical score. The treble clef staff continues the melody. The bass clef staff maintains the triplet accompaniment pattern. The system is divided into two measures by a bar line.

78

Measures 78 and 79 of a musical score. The treble clef staff shows a change in the melody. The bass clef staff continues with the triplet accompaniment. The system is divided into two measures by a bar line.

80

Measures 80 and 81 of a musical score. The treble clef staff continues the melody. The bass clef staff maintains the triplet accompaniment pattern. The system is divided into two measures by a bar line.

82

85

88

91

94

94

97

97

100

100

103

103

106

109

112

115

118

120

122

125

129

133

136

139

142

145

148

151

153

155

157

159

161

Measures 161-164. Treble clef: Four groups of triplets of eighth notes (red). Bass clef: Eighth notes (blue) and a lower staff with quarter notes (orange).

163

Measures 163-164. Treble clef: Four groups of triplets of eighth notes (red). Bass clef: Eighth notes (blue) and a lower staff with quarter notes (orange).

165

Measures 165-168. Treble clef: Four groups of triplets of eighth notes (red). Bass clef: Eighth notes (blue) and a lower staff with quarter notes (orange).

167

Measures 167-170. Treble clef: Four groups of triplets of eighth notes (red). Bass clef: Eighth notes (blue) and a lower staff with quarter notes (orange).

169

Measures 169-170. Treble clef: Measure 169 has four eighth notes (G4, A4, B4, C5) and a dotted quarter note (D5). Measure 170 has a dotted quarter note (D5), an eighth note (C5), a quarter note (B4), and a dotted quarter note (A4). Bass clef: Measures 169-170 consist of continuous eighth-note triplets (G3, A3, B3).

171

Measures 171-172. Treble clef: Measure 171 has a dotted quarter note (G4), an eighth note (A4), a quarter note (B4), and a dotted quarter note (C5). Measure 172 has a dotted quarter note (C5), an eighth note (B4), a quarter note (A4), and a dotted quarter note (G4). Bass clef: Measures 171-172 consist of continuous eighth-note triplets (G3, A3, B3).

173

Measures 173-174. Treble clef: Measure 173 has four eighth notes (G4, A4, B4, C5) and a dotted quarter note (D5). Measure 174 has a dotted quarter note (D5), an eighth note (C5), a quarter note (B4), and a dotted quarter note (A4). Bass clef: Measures 173-174 consist of eighth-note triplets (G3, A3, B3). Measure 174 also includes orange triplets (C4, D4, E4) starting on the second half.

175

Measures 175-176. Treble clef: Measure 175 has a dotted quarter note (G4), an eighth note (A4), a quarter note (B4), and a dotted quarter note (C5). Measure 176 has a dotted quarter note (C5), an eighth note (B4), a quarter note (A4), and a dotted quarter note (G4). Bass clef: Measures 175-176 consist of eighth-note triplets (G3, A3, B3). Measure 175 also includes orange triplets (C4, D4, E4) starting on the first half. Measure 176 includes a purple eighth note (F#4) on a separate staff line.

177

Measures 177-179. Treble clef: Purple notes. Bass clef: Blue triplets.

180

Measures 180-182. Treble clef: Green notes. Bass clef: Blue and red triplets.

183

Measures 183-185. Treble clef: Green and red notes. Bass clef: Blue and orange triplets.

186

Measures 186-188. Treble clef: Green and red notes. Bass clef: Orange triplets.

189

189 190 191 192

193

193 194 195 196

197

197 198 199 200

201

201 202 203 204