

Trost in Thränen

1

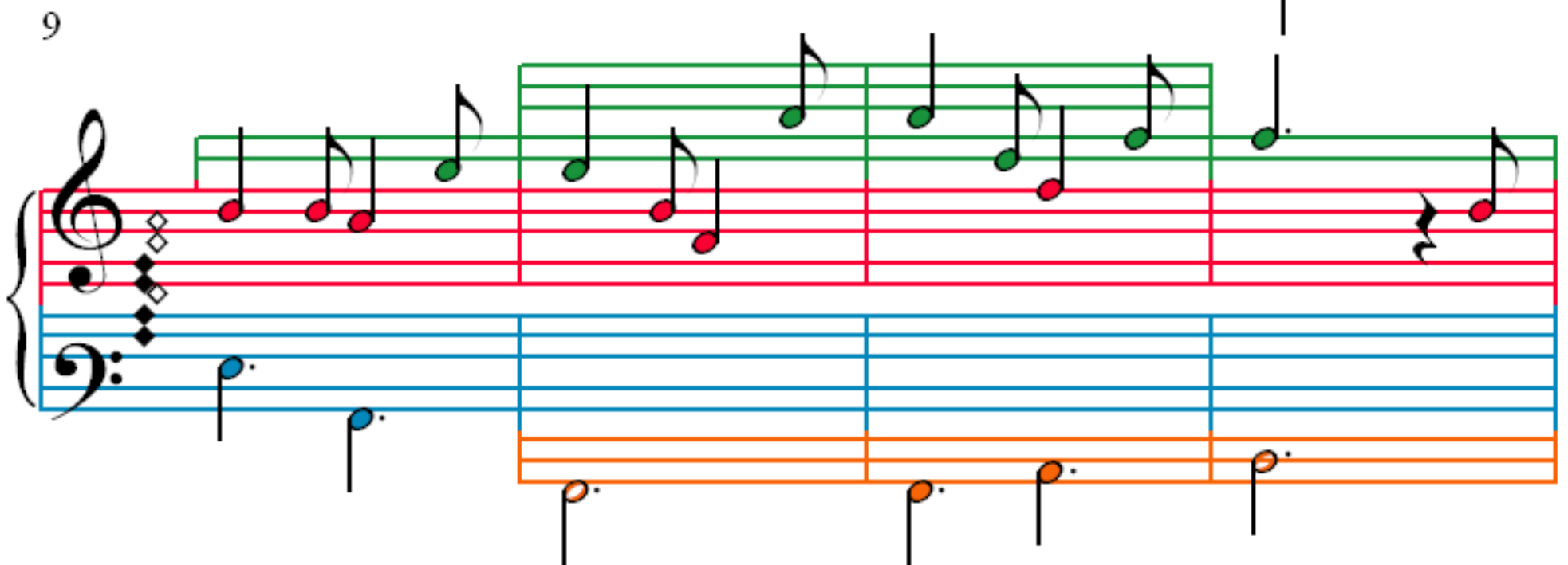
F. Schubert (1797–1828)



5



9



13



17

Measures 17-20 of the piece. The treble staff (red lines) contains a melody with eighth and sixteenth notes, some marked with green dots. The bass staff (blue lines) has rests in measures 17 and 18, followed by a half note in measure 19 and a half note in measure 20. An orange staff below the bass staff contains a single note in measure 17, a half note in measure 18, and a half note in measure 19. A pink staff below the orange staff contains a single note in measure 17.

21

Measures 21-24 of the piece. The treble staff (red lines) contains a melody with eighth and sixteenth notes, some marked with green dots. The bass staff (blue lines) has rests in measures 21 and 22, followed by a half note in measure 23 and a half note in measure 24. An orange staff below the bass staff contains a single note in measure 21, a half note in measure 22, and a half note in measure 23.

25

Measures 25-28 of the piece. The treble staff (red lines) contains a melody with eighth and sixteenth notes, some marked with green dots. The bass staff (blue lines) contains a steady eighth-note accompaniment. An orange staff below the bass staff contains a single note in measure 25, a half note in measure 26, and a half note in measure 27.

29

Measures 29-32 of the piece. The treble staff (red lines) contains a melody with eighth and sixteenth notes, some marked with green dots. The bass staff (blue lines) contains a steady eighth-note accompaniment. An orange staff below the bass staff contains a single note in measure 29, a half note in measure 30, and a half note in measure 31. A pink staff below the orange staff contains a single note in measure 29.

33

Measures 33-35 of a musical score. The system consists of three staves: a grand staff (treble and bass clefs) and a single bass staff below. The grand staff has a green line and a red line. The single bass staff has an orange line. The music is in 4/4 time. Measure 33: Treble clef has a quarter note G4, an eighth note A4, and a quarter note B4. Bass clef has a quarter note F3. Single bass staff has a half note C3. Measure 34: Treble clef has a quarter note A4, an eighth note B4, and a quarter note C5. Bass clef has a quarter note G3. Single bass staff has a half note D3. Measure 35: Treble clef has a quarter note B4, an eighth note C5, and a quarter note D5. Bass clef has a quarter note A3. Single bass staff has a half note E3.

36

Measures 36-38 of a musical score. The system consists of three staves: a grand staff (treble and bass clefs) and a single bass staff below. The grand staff has a green line and a red line. The single bass staff has an orange line. The music is in 4/4 time. Measure 36: Treble clef has a quarter note G4, an eighth note A4, and a quarter note B4. Bass clef has a quarter note F3. Single bass staff has a half note C3. Measure 37: Treble clef has a quarter note A4, an eighth note B4, and a quarter note C5. Bass clef has a quarter note G3. Single bass staff has a half note D3. Measure 38: Treble clef has a quarter note B4, an eighth note C5, and a quarter note D5. Bass clef has a quarter note A3. Single bass staff has a half note E3.

39

Measures 39-41 of a musical score. The system consists of three staves: a grand staff (treble and bass clefs) and a single bass staff below. The grand staff has a green line and a red line. The single bass staff has an orange line. The music is in 4/4 time. Measure 39: Treble clef has a quarter note G4, an eighth note A4, and a quarter note B4. Bass clef has a quarter note F3. Single bass staff has a half note C3. Measure 40: Treble clef has a quarter note A4, an eighth note B4, and a quarter note C5. Bass clef has a quarter note G3. Single bass staff has a half note D3. Measure 41: Treble clef has a quarter note B4, an eighth note C5, and a quarter note D5. Bass clef has a quarter note A3. Single bass staff has a half note E3.

42

Measures 42-44 of a musical score. The system consists of three staves: a grand staff (treble and bass clefs) and a single bass staff below. The grand staff has a green line and a red line. The single bass staff has an orange line. The music is in 4/4 time. Measure 42: Treble clef has a quarter note G4, an eighth note A4, and a quarter note B4. Bass clef has a quarter note F3. Single bass staff has a half note C3. Measure 43: Treble clef has a quarter note A4, an eighth note B4, and a quarter note C5. Bass clef has a quarter note G3. Single bass staff has a half note D3. Measure 44: Treble clef has a quarter note B4, an eighth note C5, and a quarter note D5. Bass clef has a quarter note A3. Single bass staff has a half note E3.