

Piano Quartet KV 478

W. A. Mozart (1756–1791)

1

4

7

10

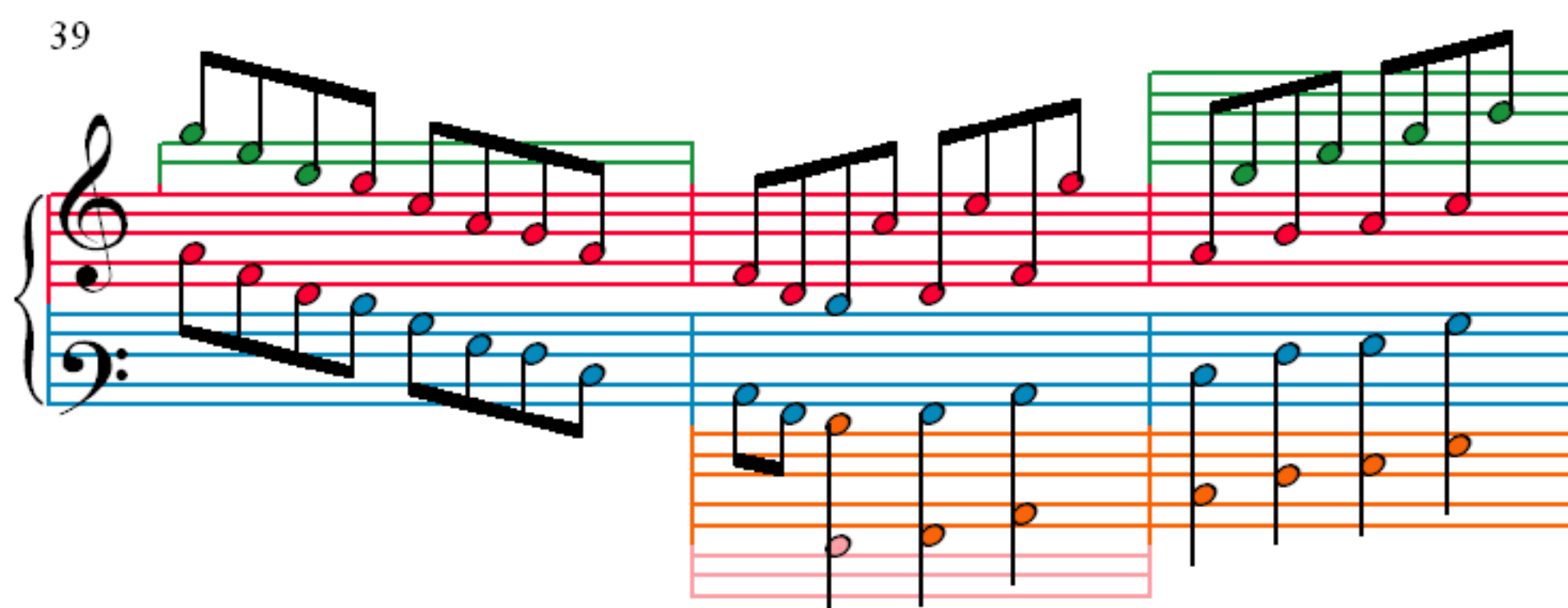
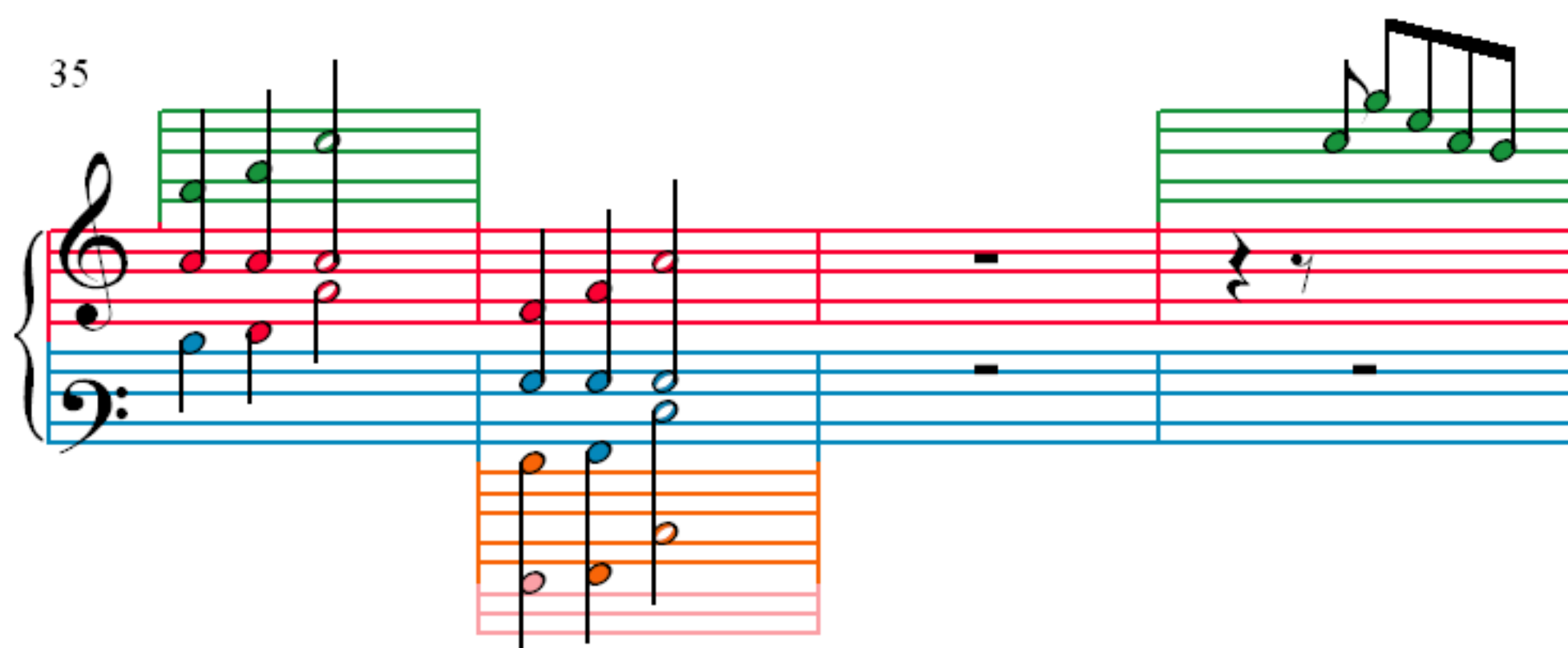
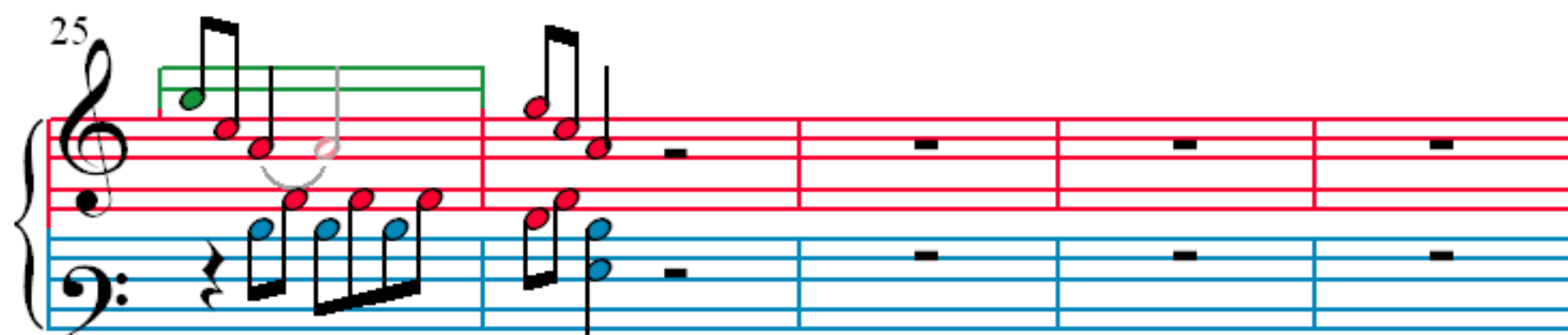
The image displays the first 12 measures of the Piano Quartet KV 478 by Wolfgang Amadeus Mozart. The notation is presented in four systems, each corresponding to a measure number (1, 4, 7, 10). Each system consists of a grand staff with a treble and bass clef. The notes are color-coded: red for the first staff, green for the second, blue for the third, and orange for the fourth. The first system (measures 1-3) shows a treble staff with a series of eighth notes and a bass staff with a whole note. The second system (measures 4-6) shows a treble staff with a series of eighth notes and a bass staff with a whole note. The third system (measures 7-9) shows a treble staff with a series of eighth notes and a bass staff with a whole note. The fourth system (measures 10-12) shows a treble staff with a series of eighth notes and a bass staff with a whole note. The notation is in 2/2 time and G major.

13

16

19

22



42

45

48

51

54

59

62

65

68

Measure 68: Treble staff has a sequence of eighth notes (G4, A4, B4, C5, B4, A4, G4). Bass staff has a sequence of eighth notes (F3, E3, D3, C3, B2, A2, G2). Measure 69: Treble staff continues the eighth notes. Bass staff continues the eighth notes. Measure 70: Treble staff has a whole rest. Bass staff has a whole rest. A small inset shows a continuation of the bass line on an orange staff.

71

Measure 71: Treble staff has a whole rest. Bass staff has a whole rest. Measure 72: Treble staff has a whole rest. Bass staff has a whole rest. Measure 73: Treble staff has a whole rest. Bass staff has a whole rest. Measure 74: Treble staff has a whole rest. Bass staff has a whole rest. Measure 75: Treble staff has a whole rest. Bass staff has a sequence of eighth notes (F3, E3, D3, C3, B2, A2, G2).

76

Measure 76: Treble staff has a sequence of eighth notes (G4, A4, B4, C5, B4, A4, G4). Bass staff has a sequence of eighth notes (F3, E3, D3, C3, B2, A2, G2). Measure 77: Treble staff continues the eighth notes. Bass staff continues the eighth notes. Measure 78: Treble staff has a whole rest. Bass staff has a whole rest. Measure 79: Treble staff continues the eighth notes. Bass staff continues the eighth notes. Measure 80: Treble staff continues the eighth notes. Bass staff continues the eighth notes.

79

Measure 79: Treble staff has a sequence of eighth notes (G4, A4, B4, C5, B4, A4, G4). Bass staff has a sequence of eighth notes (F3, E3, D3, C3, B2, A2, G2). Measure 80: Treble staff continues the eighth notes. Bass staff continues the eighth notes. Measure 81: Treble staff has a whole rest. Bass staff has a whole rest. Measure 82: Treble staff continues the eighth notes. Bass staff continues the eighth notes. Measure 83: Treble staff continues the eighth notes. Bass staff continues the eighth notes.

82

86

89

93

101

104

107

110

114

119

122

125

128

132

136

140

144

Measures 144-146. Treble clef has red notes, bass clef has blue notes. A third system of orange staves is below the bass staff. Slurs connect notes across measures.

147

Measures 147-149. Treble clef has red notes, bass clef has blue notes. A third system of orange staves is below the bass staff. Slurs connect notes across measures.

150

Measures 150-152. Treble clef has red notes, bass clef has blue notes. A third system of orange staves is below the bass staff. Slurs connect notes across measures.

153

Measures 153-155. Treble clef has red notes, bass clef has blue notes. A third system of orange staves is below the bass staff. Slurs connect notes across measures.

156

160

165

170

175

179

182

184

187

Measures 187-189 of Piano Quartet KV 478. The system consists of a grand staff with a treble clef and a bass clef. The treble staff has a purple box highlighting measures 187-188 and a green box highlighting measure 189. The bass staff has a blue box highlighting measures 187-188 and a green box highlighting measure 189. The music features a complex rhythmic pattern with many sixteenth and thirty-second notes. The treble staff has a red line of notes, and the bass staff has a blue line of notes. The notes are color-coded: red for the treble staff and blue for the bass staff. The notes are connected by a slur, indicating a continuous melodic line.

190

Measures 190-192 of Piano Quartet KV 478. The system consists of a grand staff with a treble clef and a bass clef. The treble staff has a purple box highlighting measures 190-191 and a green box highlighting measure 192. The bass staff has a blue box highlighting measures 190-191 and a green box highlighting measure 192. The music features a complex rhythmic pattern with many sixteenth and thirty-second notes. The treble staff has a red line of notes, and the bass staff has a blue line of notes. The notes are color-coded: red for the treble staff and blue for the bass staff. The notes are connected by a slur, indicating a continuous melodic line.

193

Measures 193-196 of Piano Quartet KV 478. The system consists of a grand staff with a treble clef and a bass clef. The treble staff has a purple box highlighting measures 193-194 and a green box highlighting measures 195-196. The bass staff has a blue box highlighting measures 193-194 and a green box highlighting measures 195-196. The music features a complex rhythmic pattern with many sixteenth and thirty-second notes. The treble staff has a red line of notes, and the bass staff has a blue line of notes. The notes are color-coded: red for the treble staff and blue for the bass staff. The notes are connected by a slur, indicating a continuous melodic line.

197

Measures 197-200 of Piano Quartet KV 478. The system consists of a grand staff with a treble clef and a bass clef. The treble staff has a purple box highlighting measures 197-198 and a green box highlighting measures 199-200. The bass staff has a blue box highlighting measures 197-198 and a green box highlighting measures 199-200. The music features a complex rhythmic pattern with many sixteenth and thirty-second notes. The treble staff has a red line of notes, and the bass staff has a blue line of notes. The notes are color-coded: red for the treble staff and blue for the bass staff. The notes are connected by a slur, indicating a continuous melodic line.

201

206

210

213

216

216

219

222

225

228

Measures 228-231 of the Piano Quartet KV 478. The system shows four staves: Treble, Bass, and two additional staves (likely for Violin and Viola). The Treble staff contains a melodic line with a key signature change to two sharps (F# and C#) at measure 230. The Bass staff provides harmonic support with chords and single notes. The two additional staves at the bottom show a rhythmic pattern of eighth notes.

232

Measures 232-235. The Treble staff continues the melodic line, featuring a key signature change to one sharp (F#) at measure 233. The Bass staff continues with harmonic support. The two additional staves at the bottom show a rhythmic pattern of eighth notes.

236

Measures 236-239. The Treble staff has a key signature change to one sharp (F#) at measure 236. The Bass staff continues with harmonic support. The two additional staves at the bottom show a rhythmic pattern of eighth notes.

240

Measures 240-243. The Treble staff continues the melodic line, featuring a key signature change to two sharps (F# and C#) at measure 241. The Bass staff continues with harmonic support. The two additional staves at the bottom show a rhythmic pattern of eighth notes.

244

Measures 244-247 of the Piano Quartet KV 478. The notation is for a piano quartet, featuring a grand staff with a treble and bass clef. The music is in 3/4 time. Measures 244-246 are marked with a purple bracket above the treble staff. The notes are colored: green for the first two staves, red for the third, and blue for the fourth. Measure 247 is marked with a purple bracket above the treble staff and contains a single note in the treble staff.

248

Measures 248-250 of the Piano Quartet KV 478. The notation is for a piano quartet, featuring a grand staff with a treble and bass clef. The music is in 3/4 time. Measures 248-250 are marked with a purple bracket above the treble staff. The notes are colored: green for the first two staves, red for the third, and blue for the fourth. Measure 250 is marked with a purple bracket above the treble staff and contains a single note in the treble staff.

251

Measures 251-255 of the Piano Quartet KV 478. The notation is for a piano quartet, featuring a grand staff with a treble and bass clef. The music is in 3/4 time. Measures 251-255 are marked with a purple bracket above the treble staff. The notes are colored: green for the first two staves, red for the third, and blue for the fourth. Measure 255 is marked with a purple bracket above the treble staff and contains a single note in the treble staff.

256

Measures 256-259 of the Piano Quartet KV 478. The notation is for a piano quartet, featuring a grand staff with a treble and bass clef. The music is in 3/4 time. Measures 256-259 are marked with a purple bracket above the treble staff. The notes are colored: green for the first two staves, red for the third, and blue for the fourth. Measure 259 is marked with a purple bracket above the treble staff and contains a single note in the treble staff.

260

264

267

271

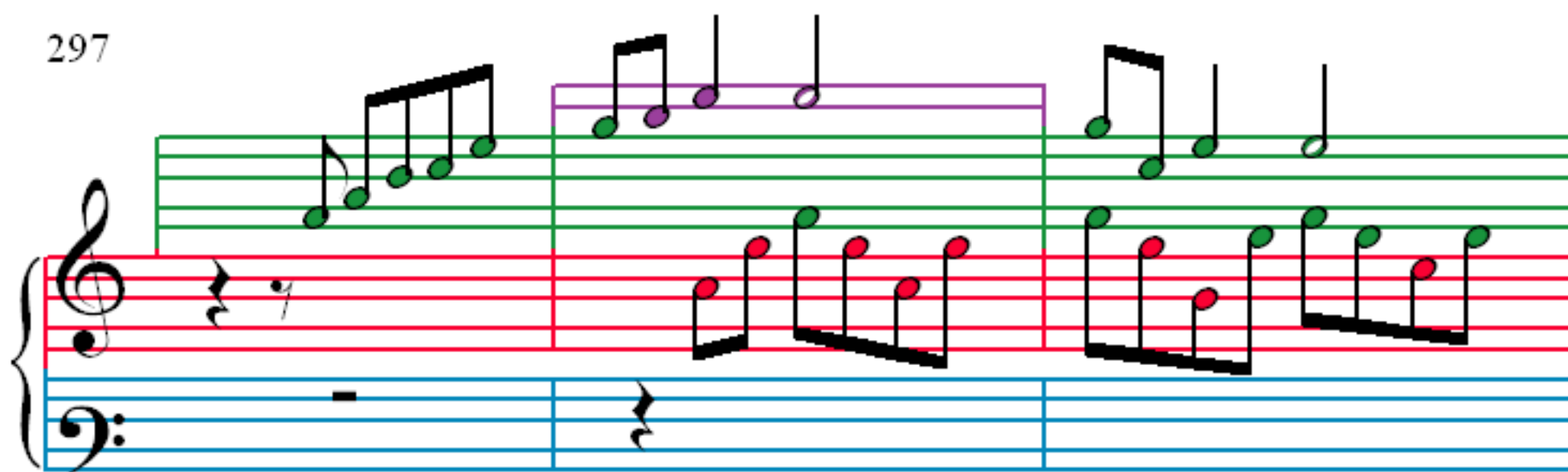
280

283

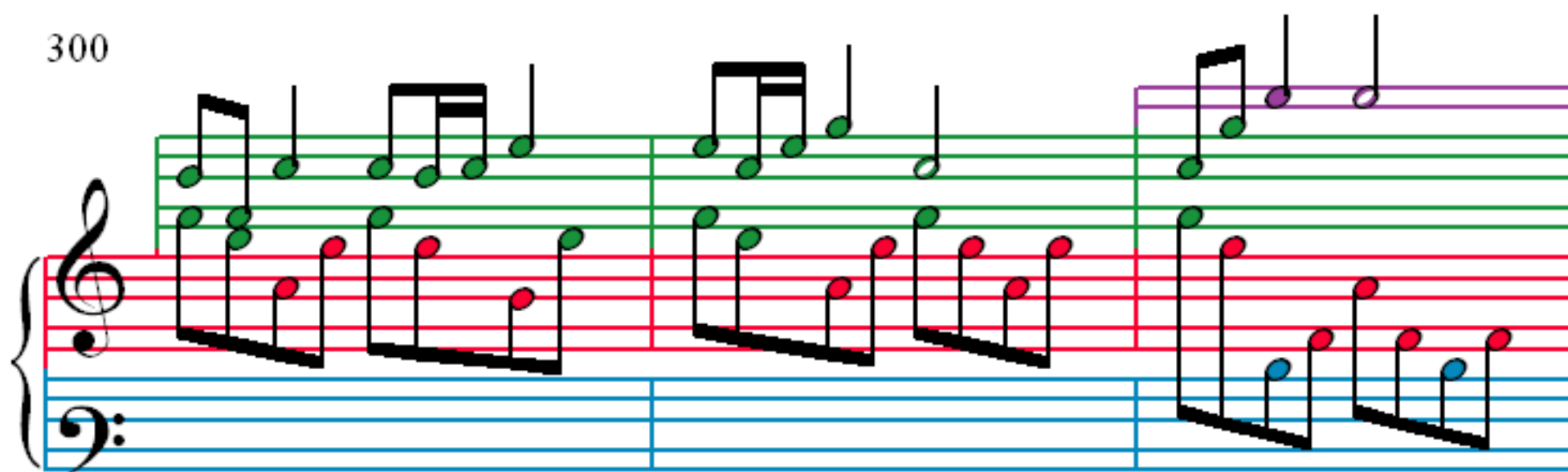
286

290

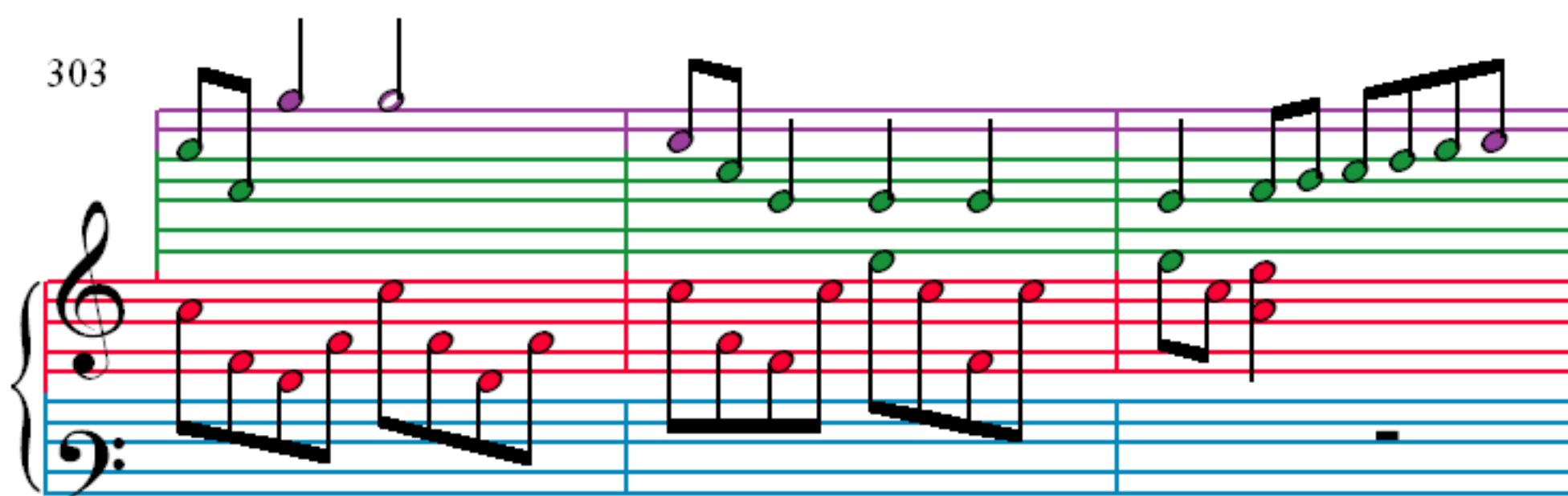
297



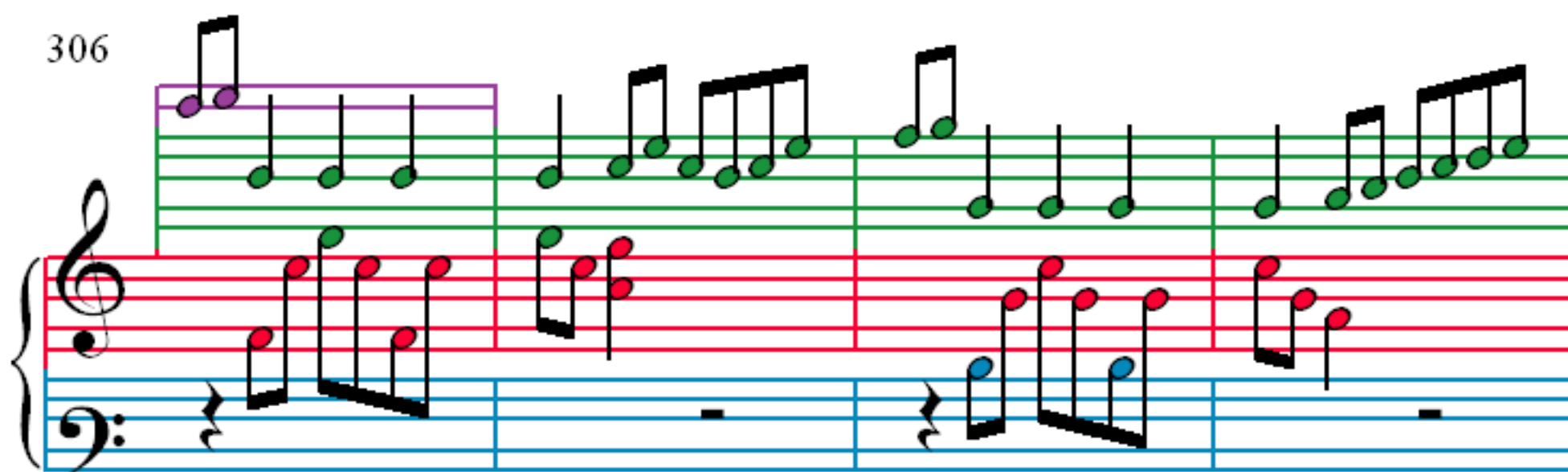
300



303



306



310

315

322

327

331

335

339

343

347

Measures 347-350. Treble clef: Measure 347 has a green sixteenth-note chord. Measure 348 has a green quarter note and a purple half note. Measure 349 has a purple quarter note and a green half note. Measure 350 has a green quarter note and a purple half note. Bass clef: Measure 347 has a blue whole rest. Measure 348 has a blue quarter note tied to a blue quarter note in measure 349. Measure 349 has a blue quarter note tied to a blue quarter note in measure 350. Measure 350 has a blue quarter note tied to a blue quarter note in measure 351. A pink staff is empty.

351

Measures 351-353. Treble clef: Measure 351 has a red quarter note and a red eighth note. Measure 352 has a red quarter note and a red eighth note. Measure 353 has a red quarter note and a red eighth note. Bass clef: Measure 351 has a blue quarter note and a blue eighth note. Measure 352 has a blue quarter note and a blue eighth note. Measure 353 has a blue quarter note and a blue eighth note. A pink staff: Measure 351 has an orange quarter note and an orange eighth note. Measure 352 has an orange quarter note and an orange eighth note. Measure 353 has an orange quarter note and an orange eighth note.

354

Measures 354-356. Treble clef: Measure 354 has a green quarter note and a green eighth note. Measure 355 has a green quarter note and a green eighth note. Measure 356 has a green quarter note and a green eighth note. Bass clef: Measure 354 has a blue quarter note and a blue eighth note. Measure 355 has a blue quarter note and a blue eighth note. Measure 356 has a blue quarter note and a blue eighth note. A pink staff: Measure 354 has an orange quarter note and an orange eighth note. Measure 355 has an orange quarter note and an orange eighth note. Measure 356 has an orange quarter note and an orange eighth note.

357

Measures 357-360. Treble clef: Measure 357 has a green quarter note and a green eighth note. Measure 358 has a green quarter note and a green eighth note. Measure 359 has a green quarter note and a green eighth note. Measure 360 has a green quarter note and a green eighth note. Bass clef: Measure 357 has a blue quarter note and a blue eighth note. Measure 358 has a blue quarter note and a blue eighth note. Measure 359 has a blue quarter note and a blue eighth note. Measure 360 has a blue quarter note and a blue eighth note. A pink staff: Measure 357 has an orange quarter note and an orange eighth note. Measure 358 has an orange quarter note and an orange eighth note. Measure 359 has an orange quarter note and an orange eighth note. Measure 360 has an orange quarter note and an orange eighth note.