

Fugue in G Minor KV 401/375e

W. A. Mozart (1756–1791)

A musical score for the song 'The Rose Tree'. The score is written for a single melodic line on a treble clef staff with a 4/4 time signature. The melody is composed of eighth and sixteenth notes, with some notes beamed together. The notes are colored: green for the first measure, red for the second, and green for the third. A first ending bracket is shown above the final measure of the melody. The bass staff is empty, indicating a simple accompaniment.

A musical score for the song 'The Rose Tree'. The score is written for a piano, with a treble clef on the upper staff and a bass clef on the lower staff. The key signature is one flat (B-flat), and the time signature is 3/4. The melody is written in the treble staff, featuring a series of eighth and sixteenth notes, with some notes marked with green and red dots. The bass staff provides a simple accompaniment, with a few notes marked with blue dots. The score is divided into three measures by vertical bar lines. The first measure contains a whole rest in the bass staff. The second measure contains a half note in the bass staff. The third measure contains a half note in the bass staff. The score is labeled with the number '3' in the top left corner.

6

The musical score for Example 6 consists of two staves. The treble staff (top) has a red line and a green line. The bass staff (bottom) has a blue line and a red line. The treble staff contains a series of notes, including a half note, a quarter note, and a half note, followed by a group of notes enclosed in a circle. The bass staff contains a series of notes, including a half note, a quarter note, and a half note, followed by a group of notes enclosed in a circle. The notes are colored red, green, and blue.

9

Notation Format © 2012, R. Ambrose.

13

16

19

22

25

Measures 25-27 of the Fugue in G Minor, KV 401/375e. The system shows three staves: Treble, Bass, and a lower staff. The Treble staff contains a complex melodic line with many beamed eighth and sixteenth notes, some marked with green dots. The Bass staff has a more rhythmic accompaniment with blue and red notes. The lower staff, which is not always present, contains orange notes. Measure 27 features a large blacked-out section in the Treble staff.

28

Measures 28-30 of the Fugue in G Minor, KV 401/375e. The system shows three staves. The Treble staff continues the complex melodic line with green and red notes. The Bass staff has blue and red notes. The lower staff contains orange notes. Measure 30 features a large blacked-out section in the Bass staff.

31

Measures 31-33 of the Fugue in G Minor, KV 401/375e. The system shows three staves. The Treble staff continues the complex melodic line with green and red notes. The Bass staff has blue and red notes. The lower staff contains orange notes. Measure 33 features a large blacked-out section in the Bass staff.

34

Measures 34-36 of the Fugue in G Minor, KV 401/375e. The system shows three staves. The Treble staff continues the complex melodic line with green and red notes. The Bass staff has blue and red notes. The lower staff contains orange notes. Measure 36 features a large blacked-out section in the Bass staff.

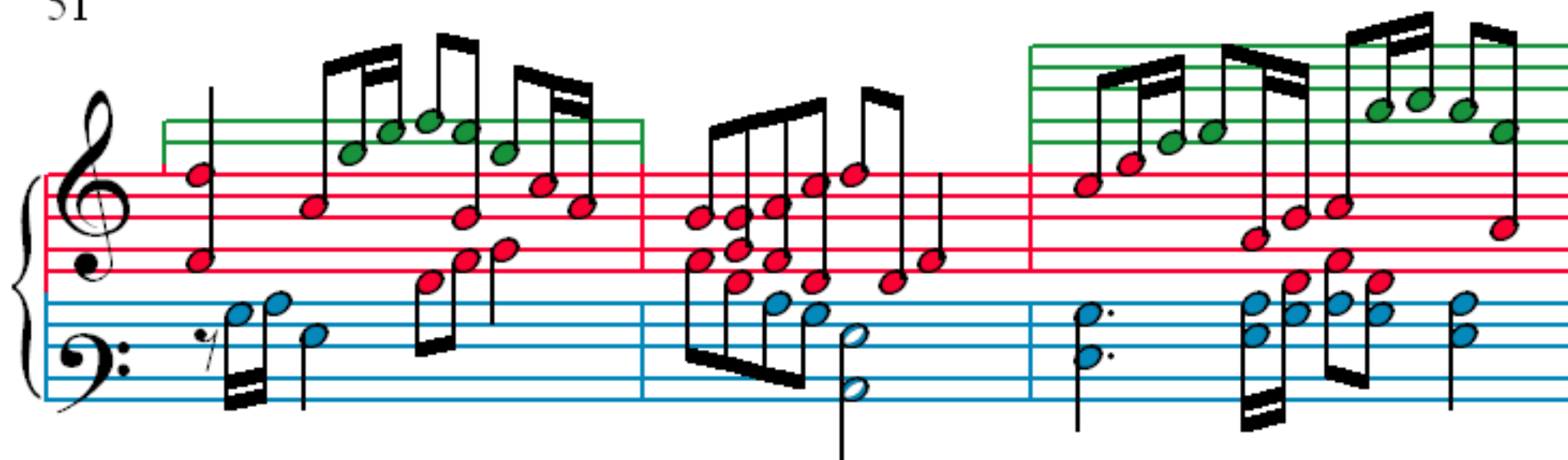
38

41

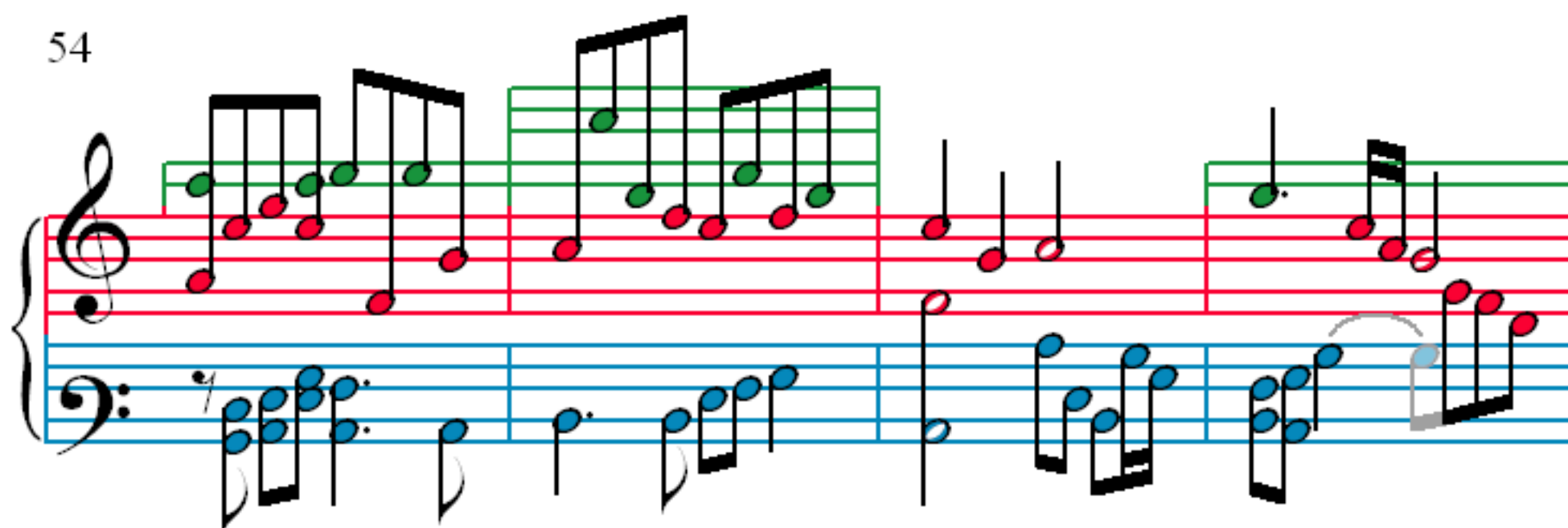
44

48

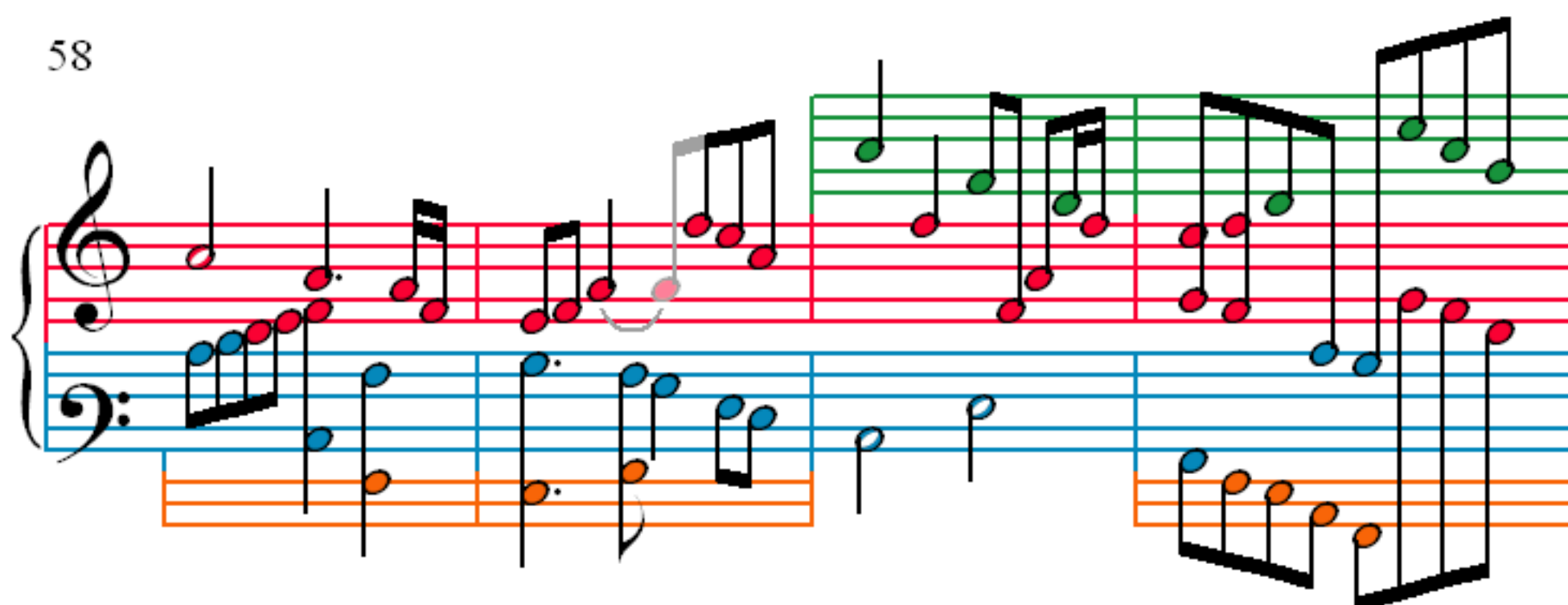
51



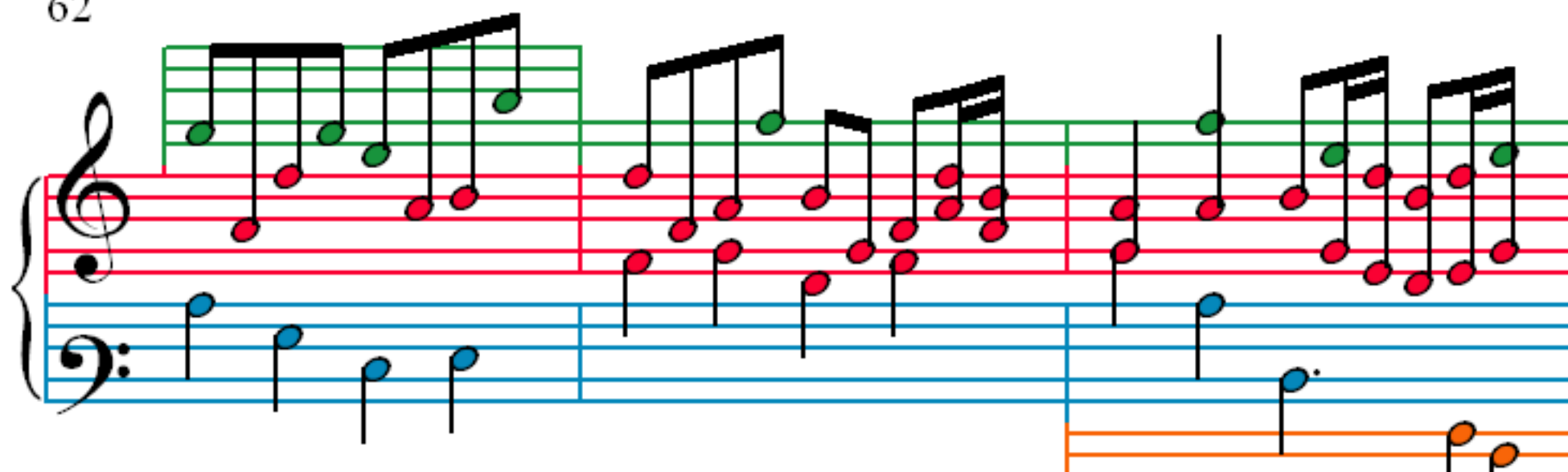
54



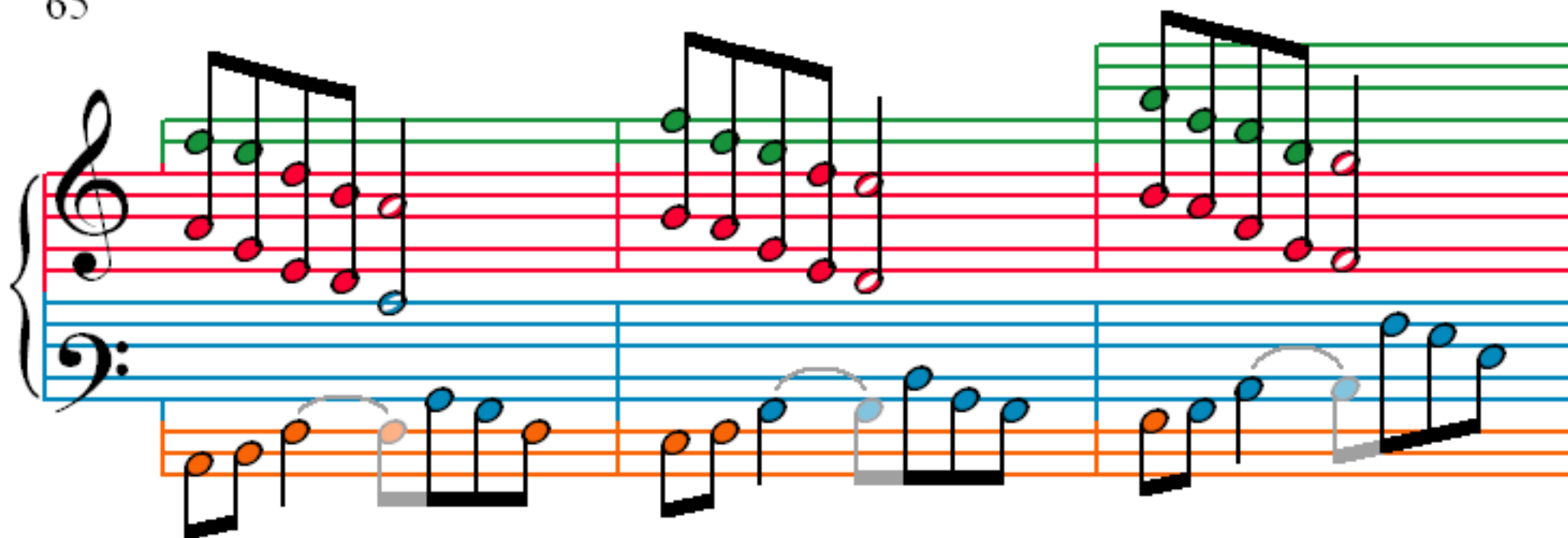
58



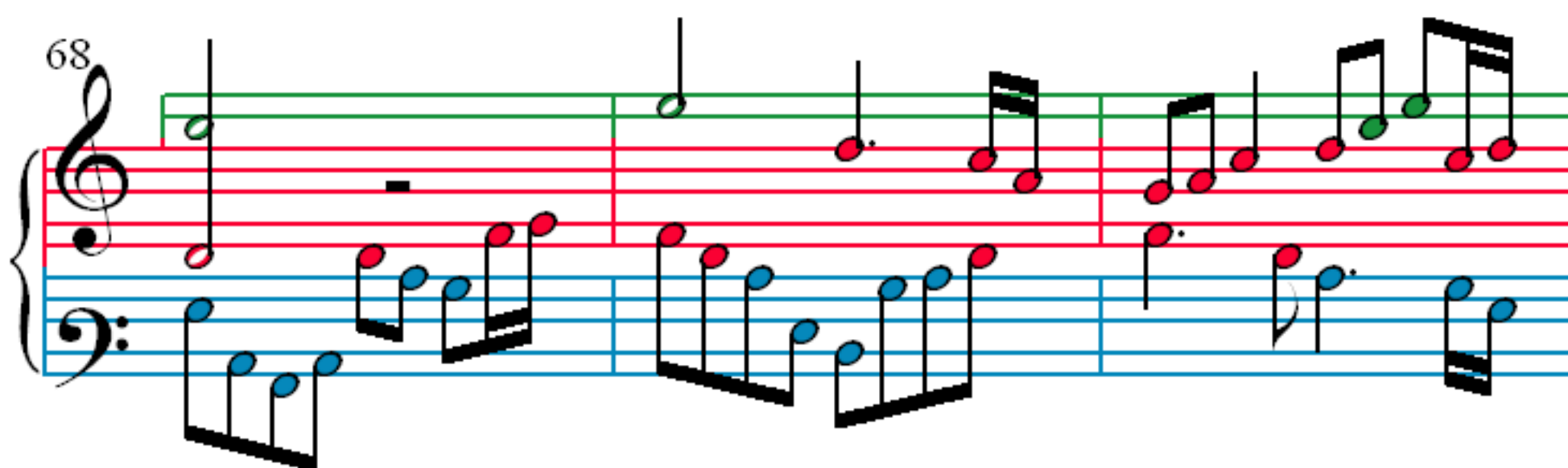
62



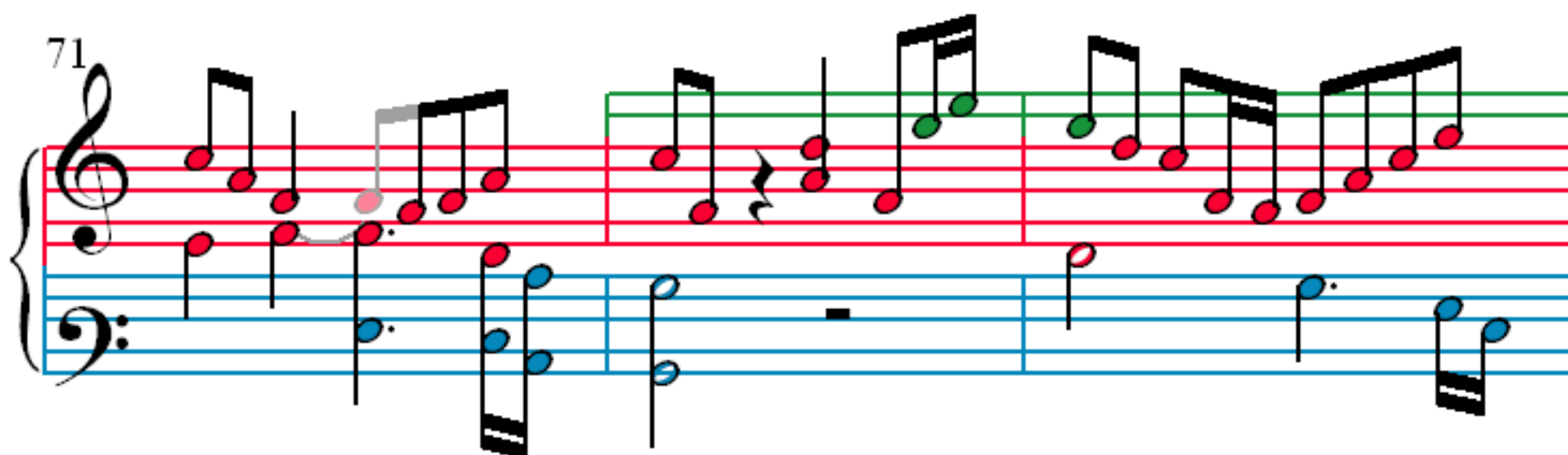
65



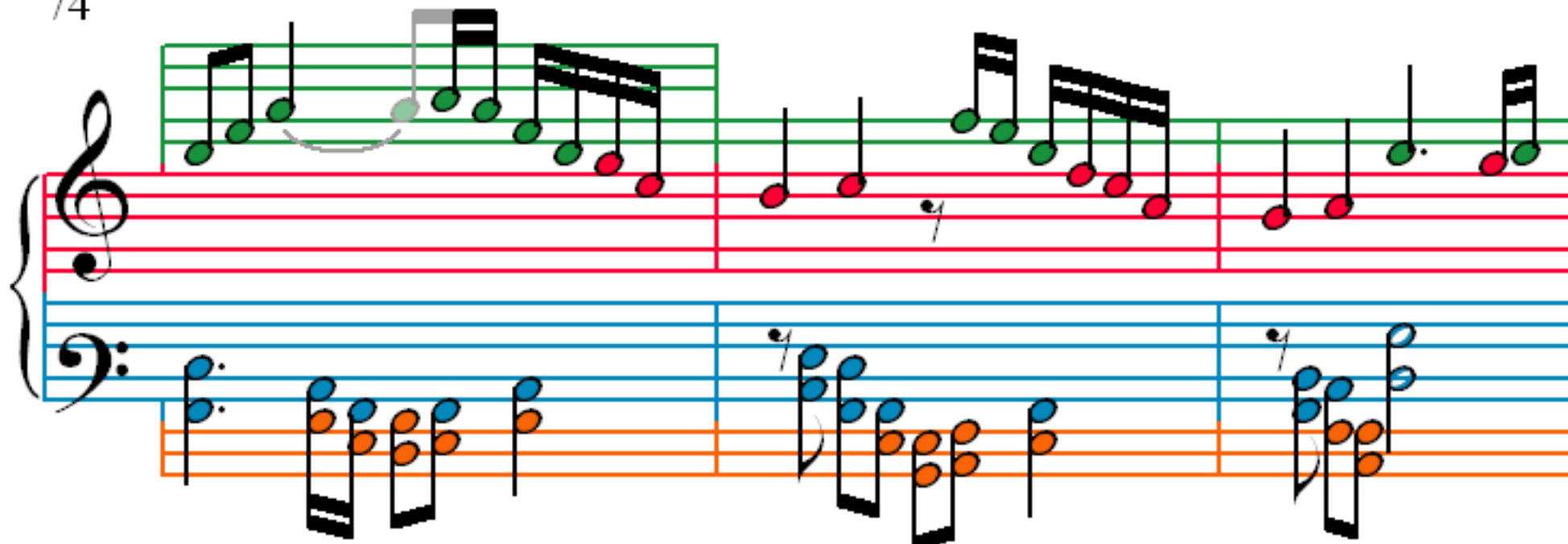
68



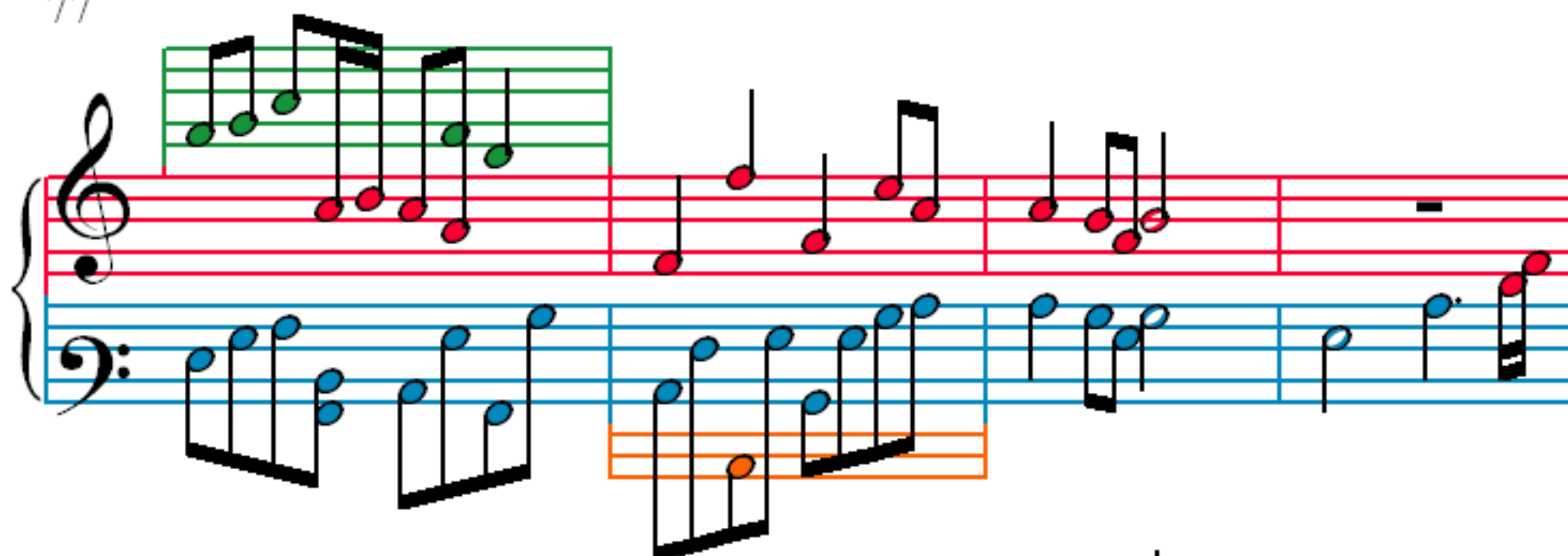
71



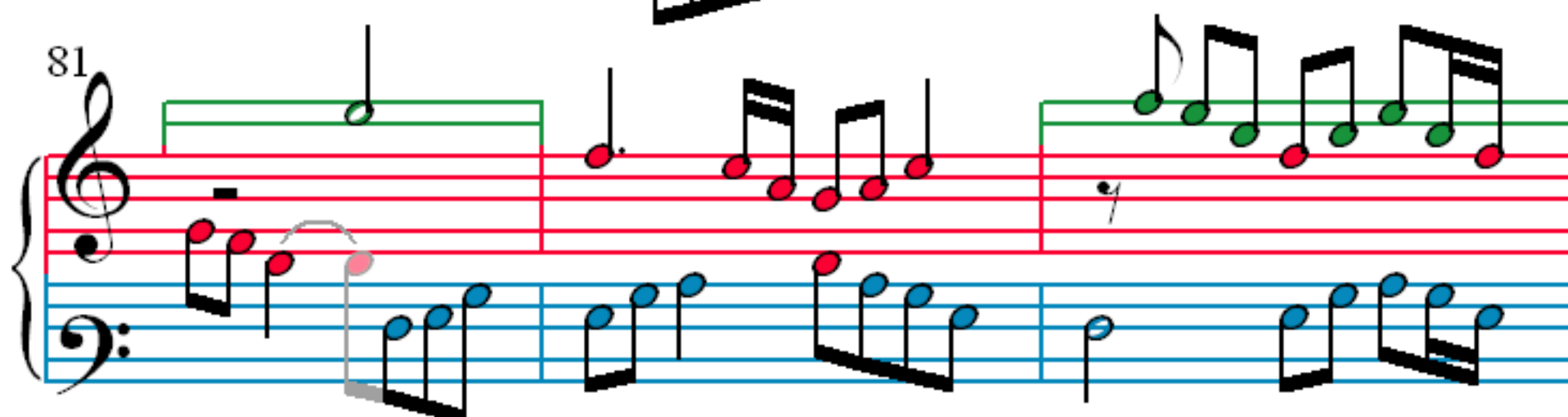
74



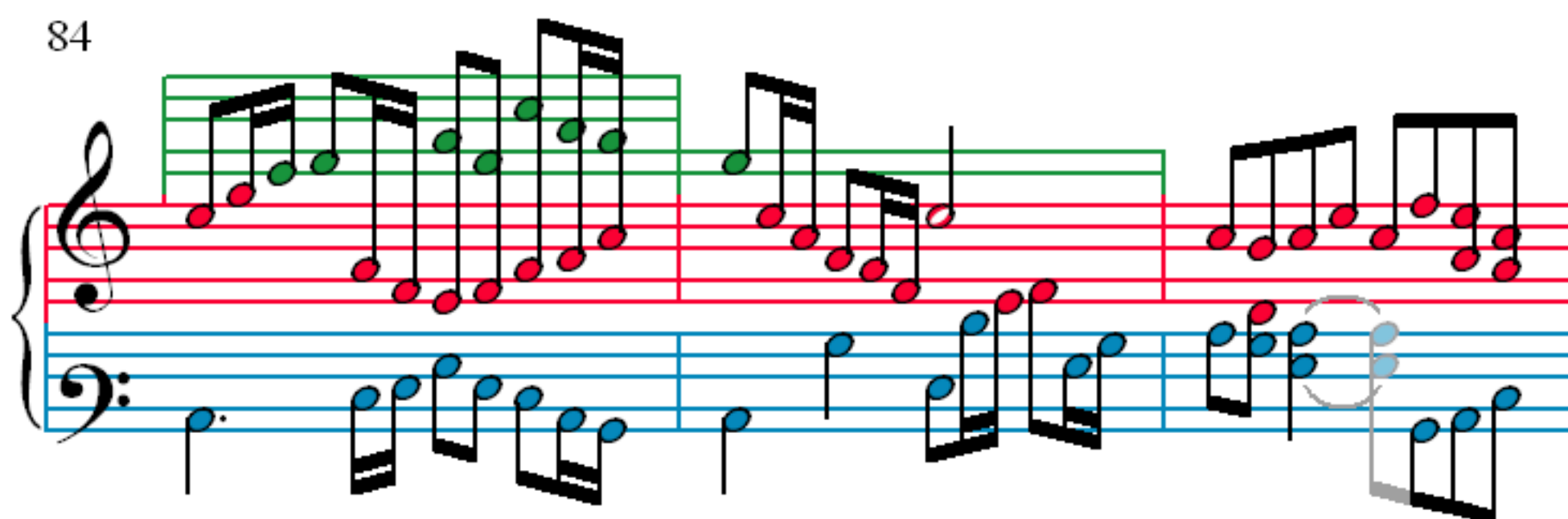
77



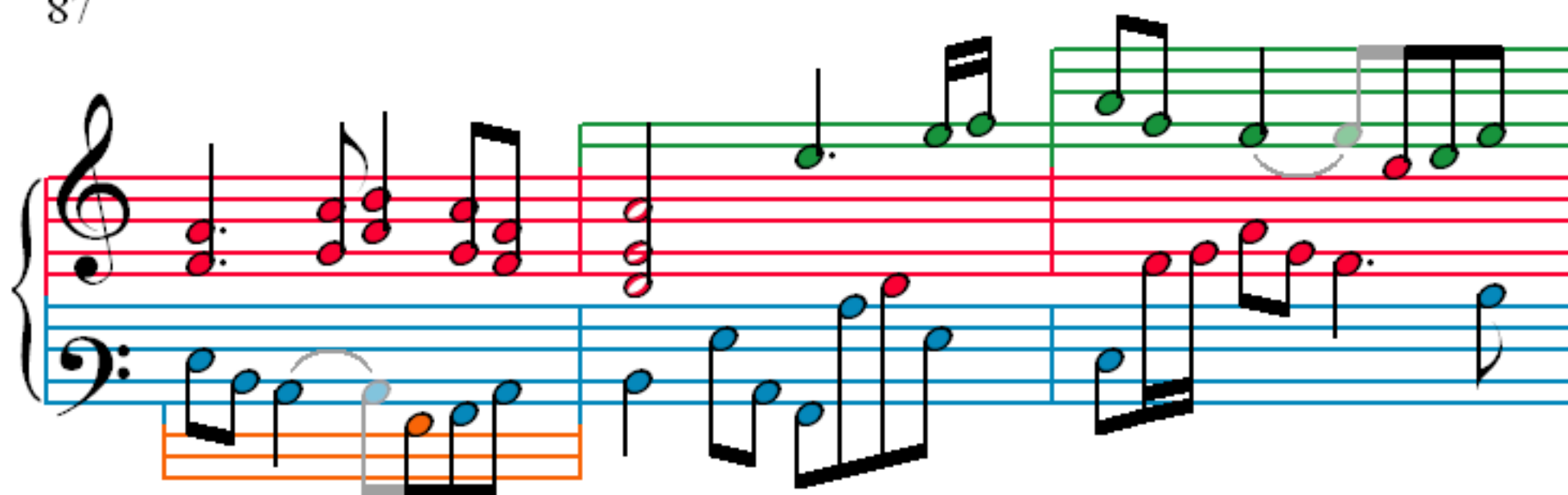
81



84



87



90

93

96

99