

Sonate for Violin and Piano K 379 2

W. A. Mozart (1756–1791)

1

3

6

9

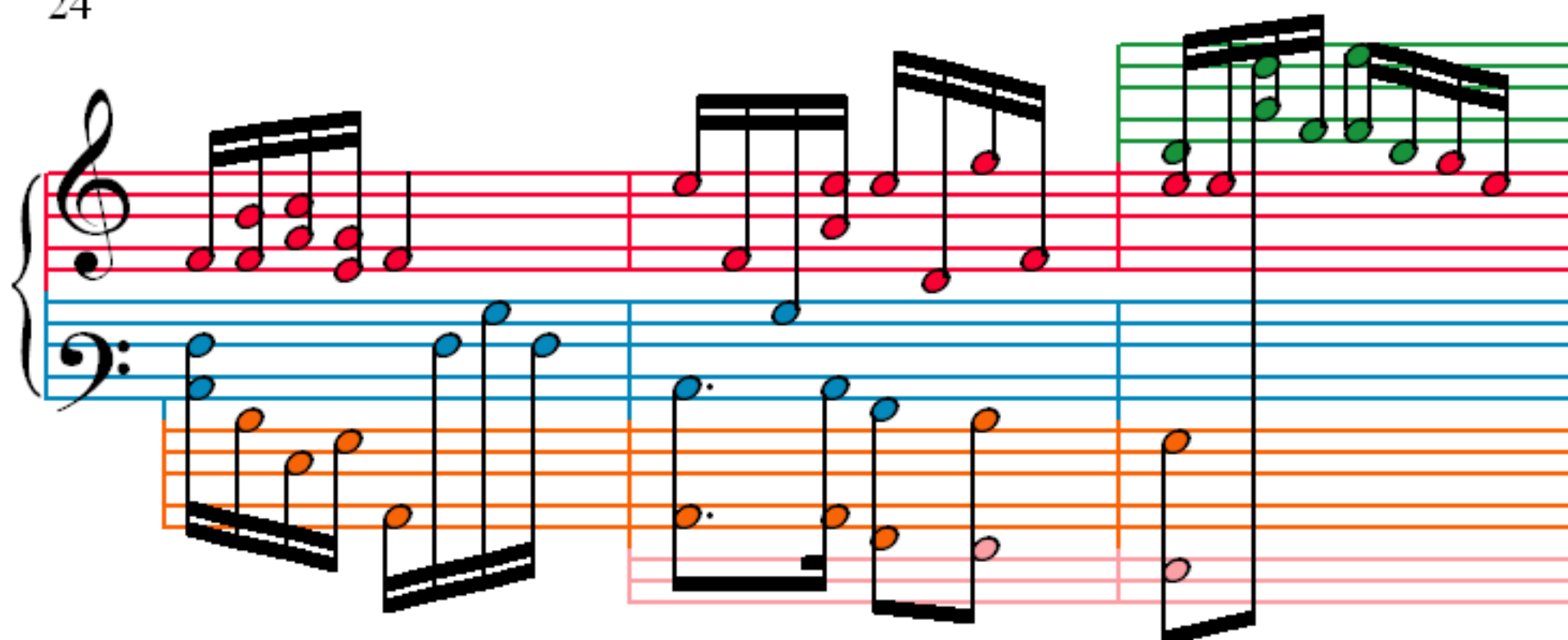
12

15

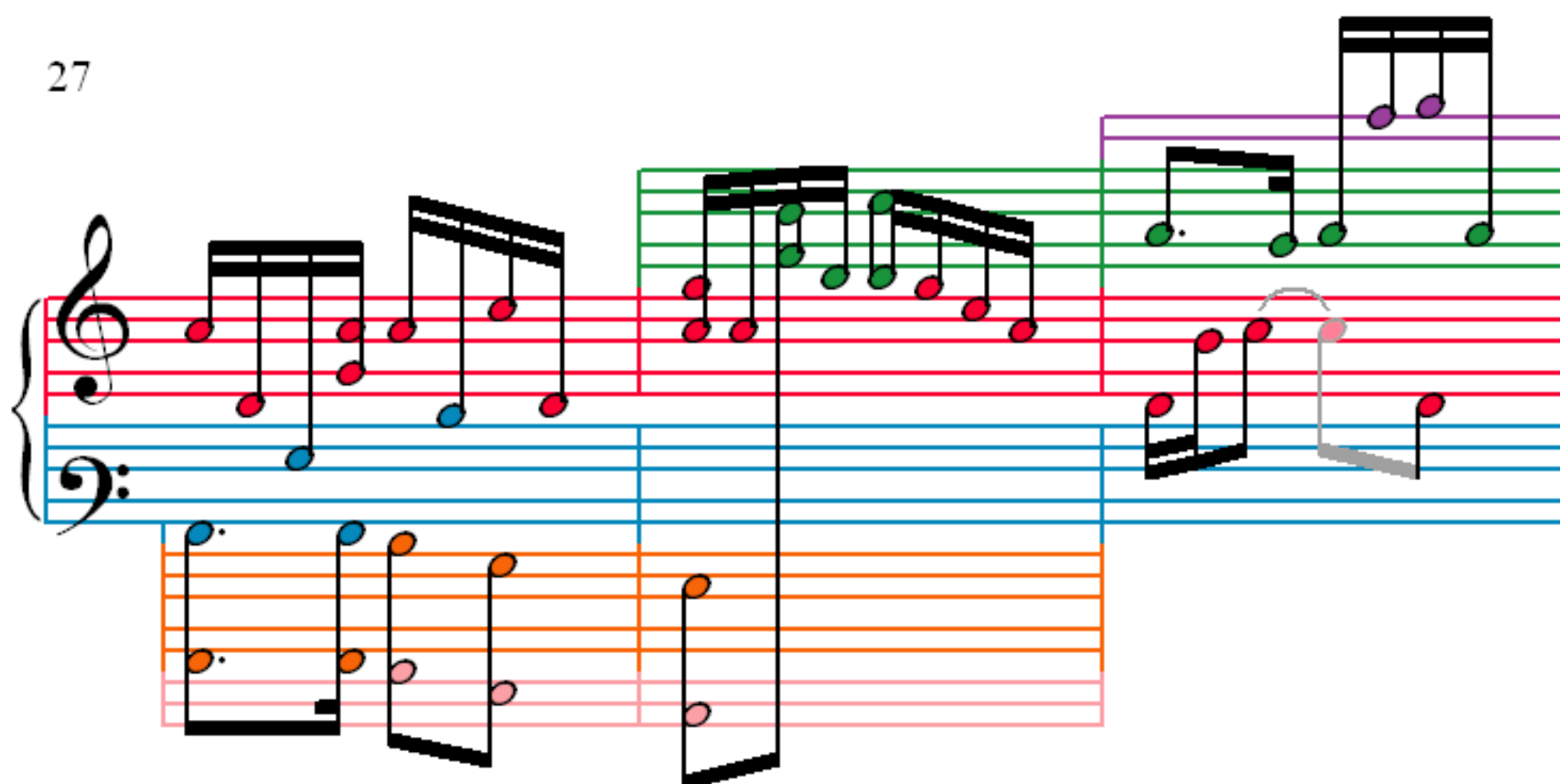
18

21

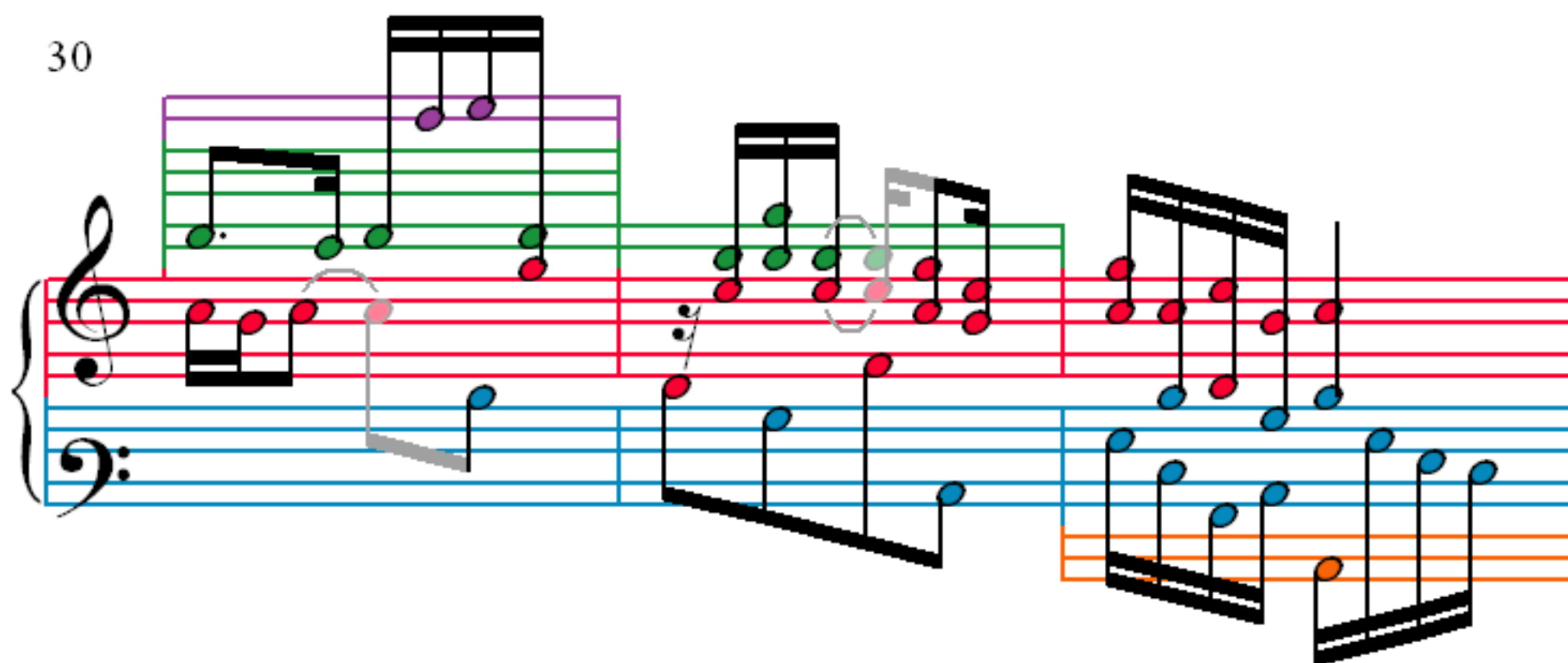
24



27



30



33

36

39

42

45

Measures 45-47. Treble clef: Measure 45 has a quarter rest. Measure 46 has two triplet eighth notes. Measure 47 has two triplet eighth notes. Bass clef: Measure 45 has a low octave line. Measure 46 has a quarter note. Measure 47 has a quarter note.

48

Measures 48-50. Treble clef: Measure 48 has two triplet eighth notes. Measure 49 has two triplet eighth notes. Measure 50 has two triplet eighth notes. Bass clef: Measure 48 has a quarter note. Measure 49 has a quarter note. Measure 50 has a quarter note.

51

Measures 51-53. Treble clef: Measure 51 has eighth notes. Measure 52 has eighth notes. Measure 53 has eighth notes. Bass clef: Measure 51 has a quarter note. Measure 52 has a quarter note. Measure 53 has a quarter note.

54

Measures 54-56. Treble clef: Measure 54 has eighth notes. Measure 55 has eighth notes. Measure 56 has eighth notes. Bass clef: Measure 54 has a quarter note. Measure 55 has a quarter note. Measure 56 has a quarter note.

57

Measures 57-60 of the piano accompaniment. Measure 57 features a treble clef staff with a green box highlighting a descending eighth-note scale (G4, F#4, E4, D4, C4) and a bass clef staff with an orange box highlighting a single note (C3). Measures 58-60 show a continuous eighth-note accompaniment in the bass clef staff, with notes colored blue and orange. The treble clef staff contains chords and eighth-note patterns, with notes colored red and blue.

60

Measures 61-62 of the piano accompaniment. Measure 61 continues the eighth-note accompaniment in the bass clef staff (blue and orange notes) and chords in the treble clef staff (red and blue notes). Measure 62 features a treble clef staff with a green box highlighting a descending eighth-note scale (G4, F#4, E4, D4, C4) and a bass clef staff with a single note (C3).

63

Measures 63-65 of the piano accompaniment. Measure 63 features a treble clef staff with a green box highlighting a descending eighth-note scale (G4, F#4, E4, D4, C4) and a bass clef staff with a single note (C3). Measure 64 continues the eighth-note accompaniment in the bass clef staff (blue and orange notes) and chords in the treble clef staff (red and blue notes). Measure 65 features a treble clef staff with a green box highlighting a descending eighth-note scale (G4, F#4, E4, D4, C4) and a bass clef staff with a single note (C3).

66

Measures 66-68 of the Sonate for Violin and Piano K 379 2. The score is written for Violin (treble clef) and Piano (bass clef). The piano part features a complex rhythmic pattern with triplets and sixteenth notes, highlighted by orange and blue markings. The violin part consists of eighth and sixteenth notes, with some measures featuring a double bar line and a repeat sign.

69

Measures 69-71 of the Sonate for Violin and Piano K 379 2. The score continues the previous system. The piano part maintains its complex rhythmic pattern with triplets and sixteenth notes, highlighted by orange and blue markings. The violin part consists of eighth and sixteenth notes, with some measures featuring a double bar line and a repeat sign.

72

Measures 72-74 of the Sonate for Violin and Piano K 379 2. The score continues the previous system. The piano part maintains its complex rhythmic pattern with triplets and sixteenth notes, highlighted by orange and blue markings. The violin part consists of eighth and sixteenth notes, with some measures featuring a double bar line and a repeat sign.

75

Measures 75-77 of the Sonate for Violin and Piano K 379 2. The score is written for Violin (treble clef) and Piano (bass clef). The piano part features a continuous triplet pattern in the right hand, with notes colored red, blue, and green. The violin part has a melodic line with notes colored red, blue, and green. A grey circle highlights a specific note in the violin part in measure 76.

78

Measures 78-80 of the Sonate for Violin and Piano K 379 2. The score continues with the same instrumentation. The piano part's triplet pattern continues, with notes colored red, blue, and green. The violin part has a melodic line with notes colored red, blue, and green. A grey circle highlights a specific note in the violin part in measure 79.

81

Measures 81-83 of the Sonate for Violin and Piano K 379 2. The score continues with the same instrumentation. The piano part's triplet pattern continues, with notes colored red, blue, and green. The violin part has a melodic line with notes colored red, blue, and green. A grey circle highlights a specific note in the violin part in measure 82.

84

87

90

93

Measures 93-95 of the sonata. Measure 93 features a treble staff with a melodic line of eighth notes and a bass staff with a descending eighth-note line. Measure 94 has a treble staff with a melodic line and a bass staff with a descending eighth-note line. Measure 95 has a treble staff with a melodic line and a bass staff with a descending eighth-note line. The notation is color-coded: red for the treble staff, blue for the bass staff, and green for the piano accompaniment.

96

Measures 96-98 of the sonata. Measure 96 features a treble staff with a melodic line and a bass staff with a descending eighth-note line. Measure 97 has a treble staff with a melodic line and a bass staff with a descending eighth-note line. Measure 98 has a treble staff with a melodic line and a bass staff with a descending eighth-note line. The notation is color-coded: red for the treble staff, blue for the bass staff, and green for the piano accompaniment.

99

Measures 99-101 of the sonata. Measure 99 features a treble staff with a melodic line and a bass staff with a descending eighth-note line. Measure 100 has a treble staff with a melodic line and a bass staff with a descending eighth-note line. Measure 101 has a treble staff with a melodic line and a bass staff with a descending eighth-note line. The notation is color-coded: red for the treble staff, blue for the bass staff, and green for the piano accompaniment.

102

Measures 102-104 of the sonata. Measure 102 features a treble staff with a melodic line and a bass staff with a descending eighth-note line. Measure 103 has a treble staff with a melodic line and a bass staff with a descending eighth-note line. Measure 104 has a treble staff with a melodic line and a bass staff with a descending eighth-note line. The notation is color-coded: red for the treble staff, blue for the bass staff, and green for the piano accompaniment.

105

108

111

114

117

120

124

128