

Lied Ohne Worte - Opus 102, No. 3

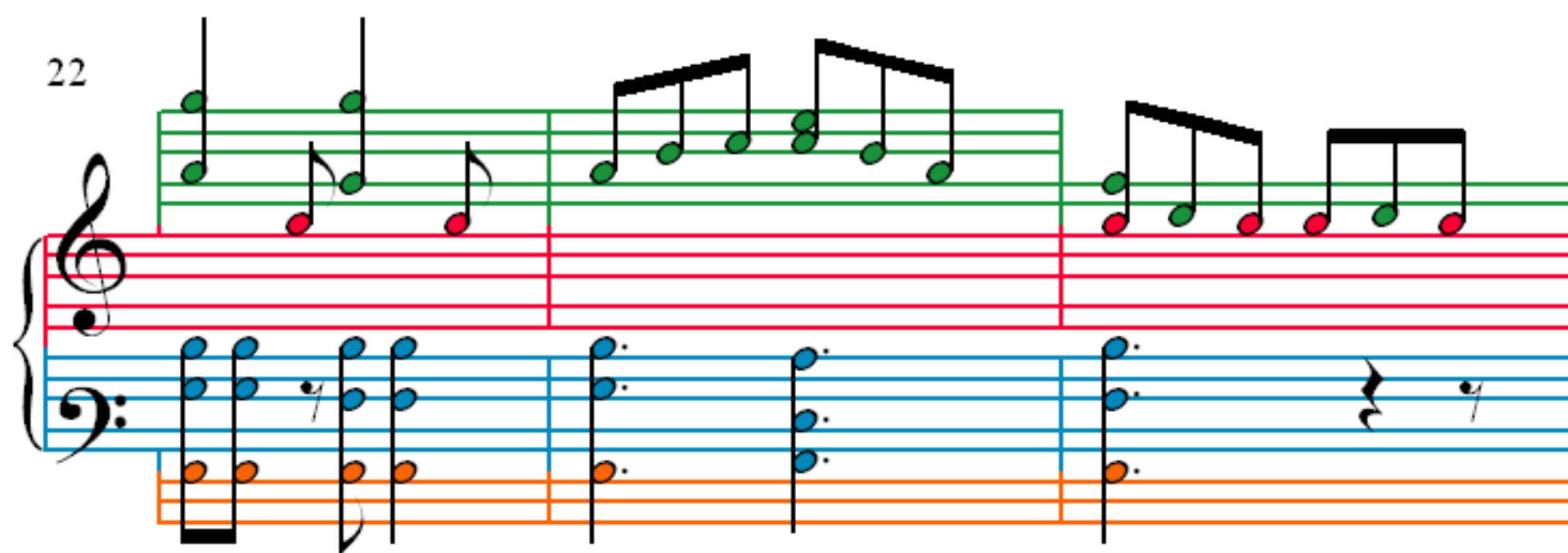
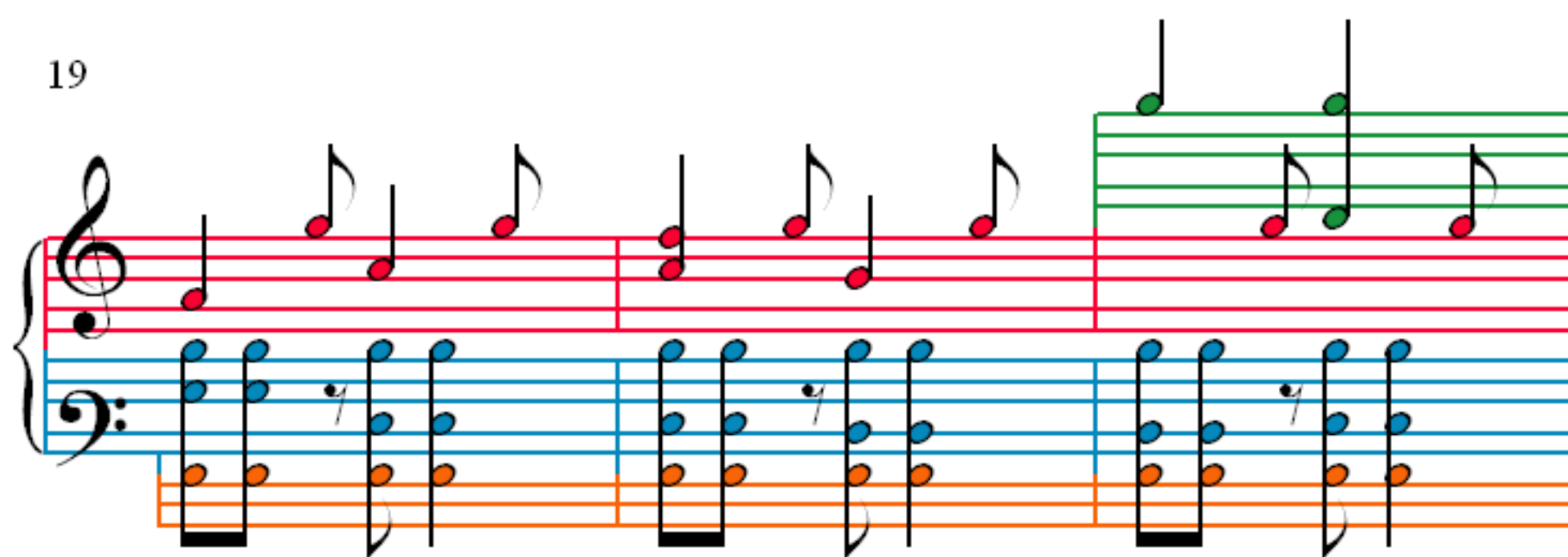
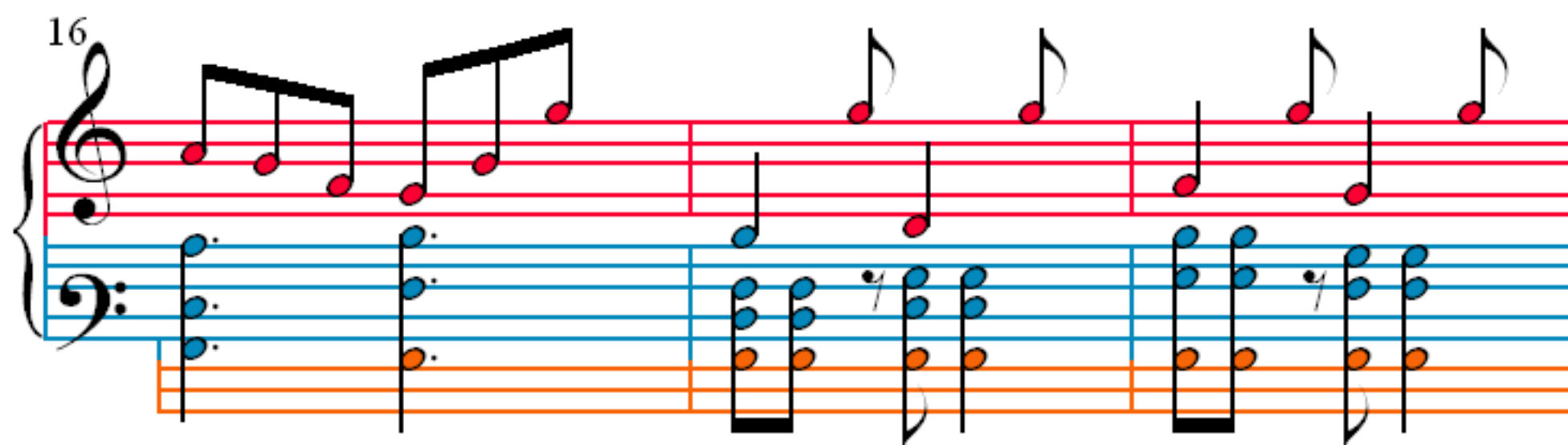
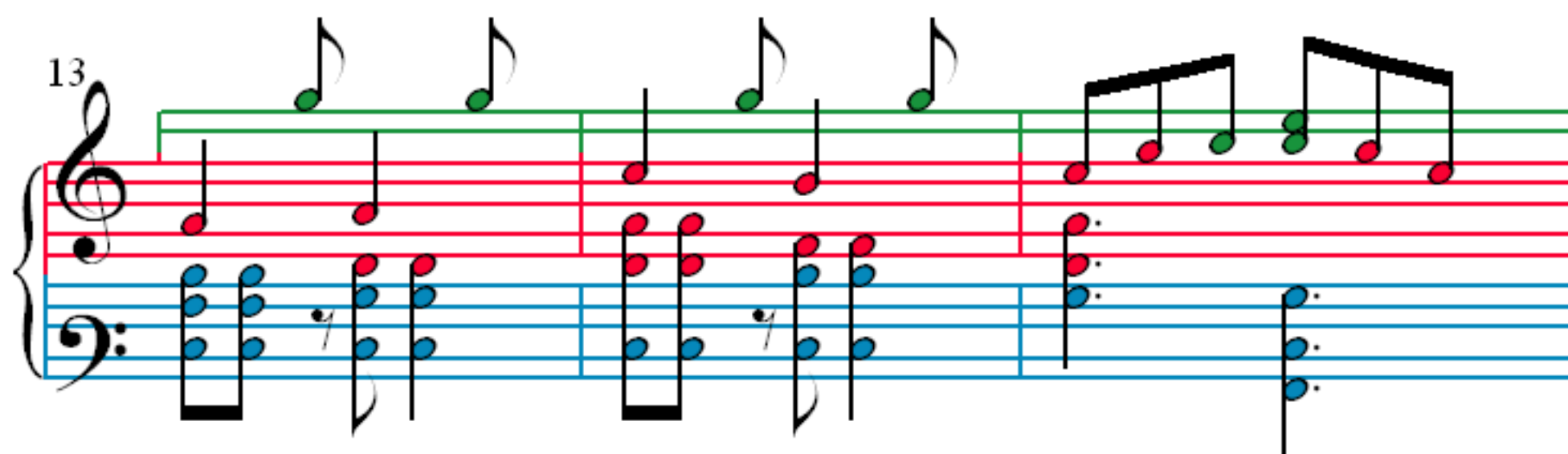
F. Mendelssohn-Bartholdy (1809–1847)

1

4

7

10



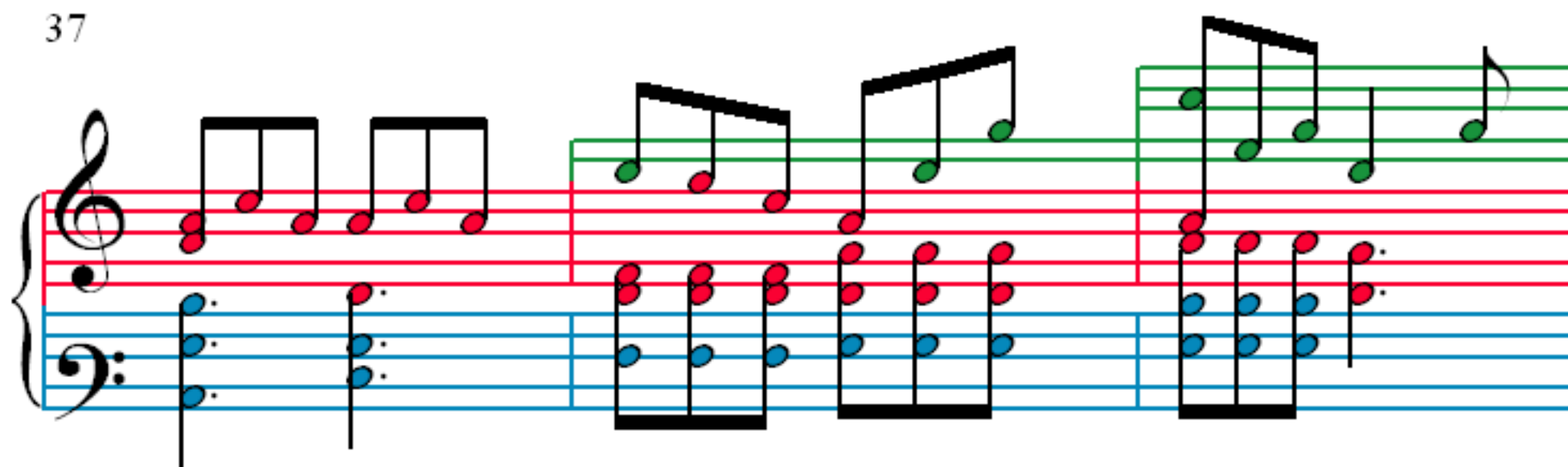
25

28

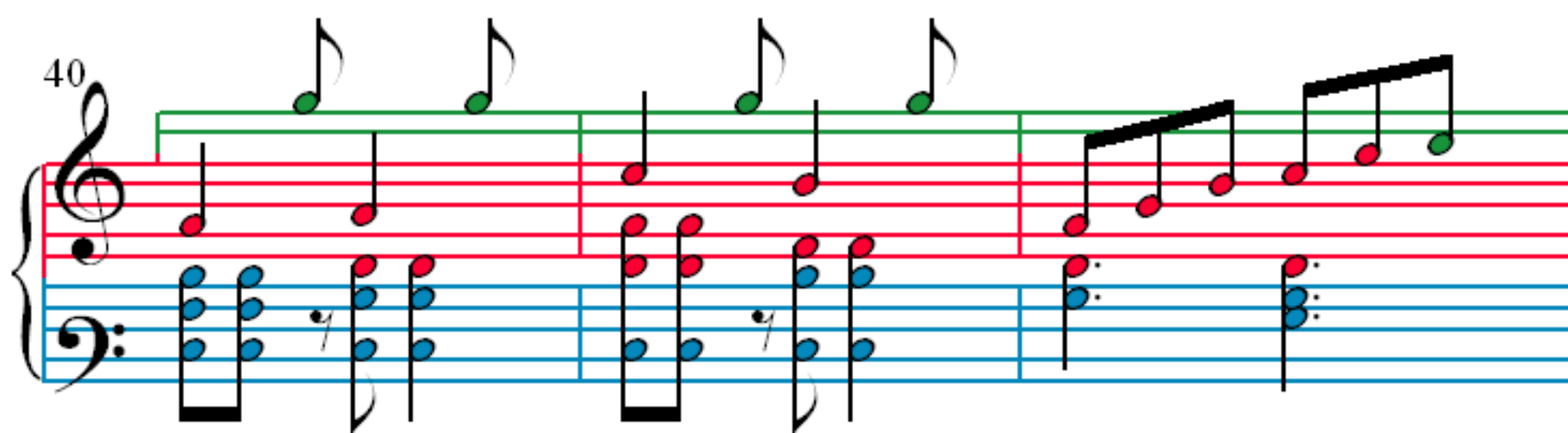
31

34

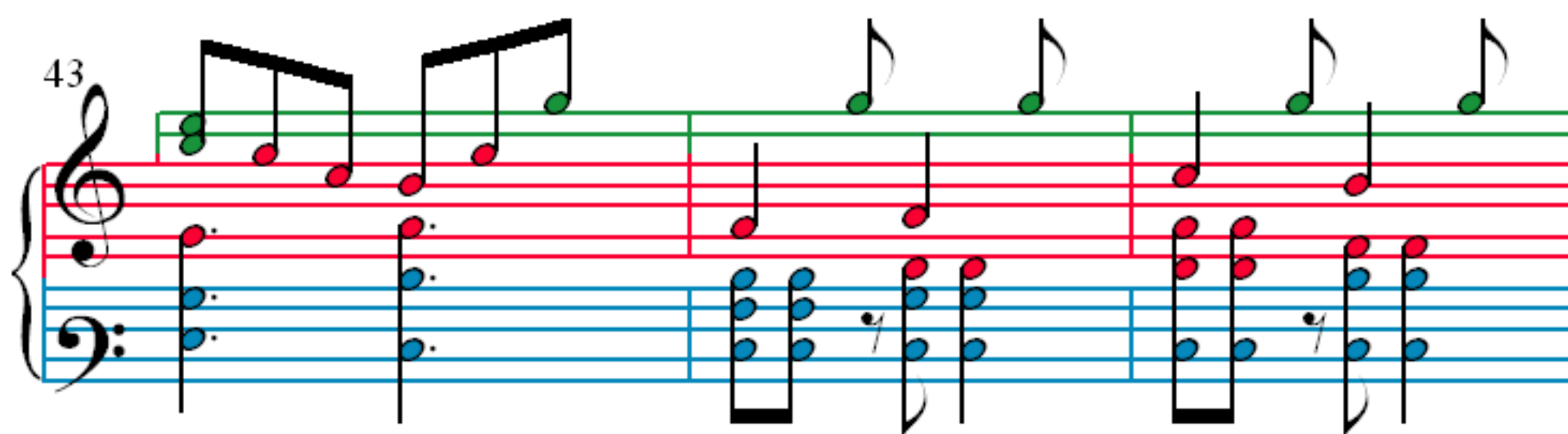
37



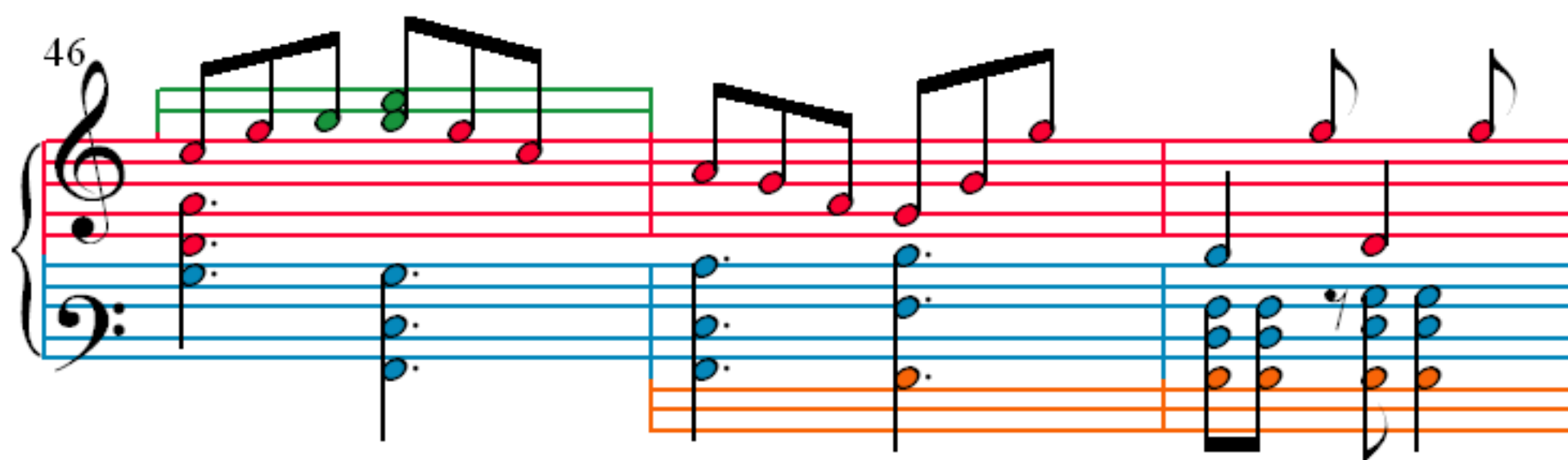
40



43



46



49

52

55

58

61

Measures 61-63. Treble clef: eighth-note chords. Bass clef: single notes. An orange line is at the bottom.

64

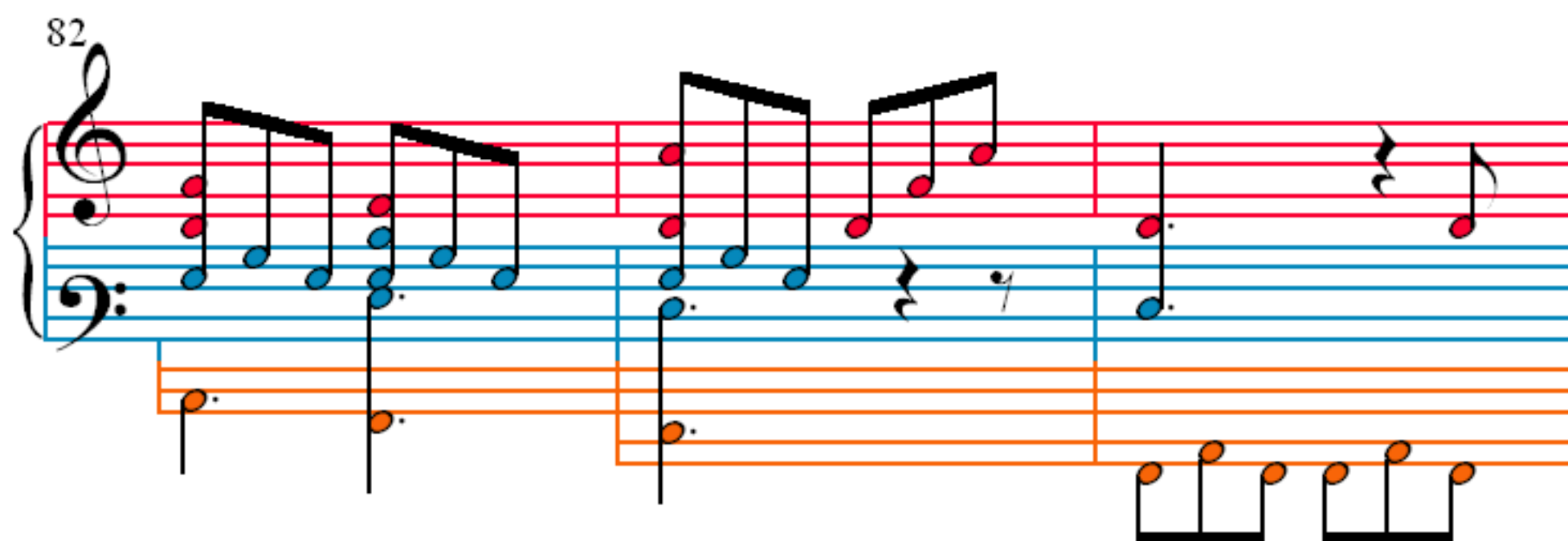
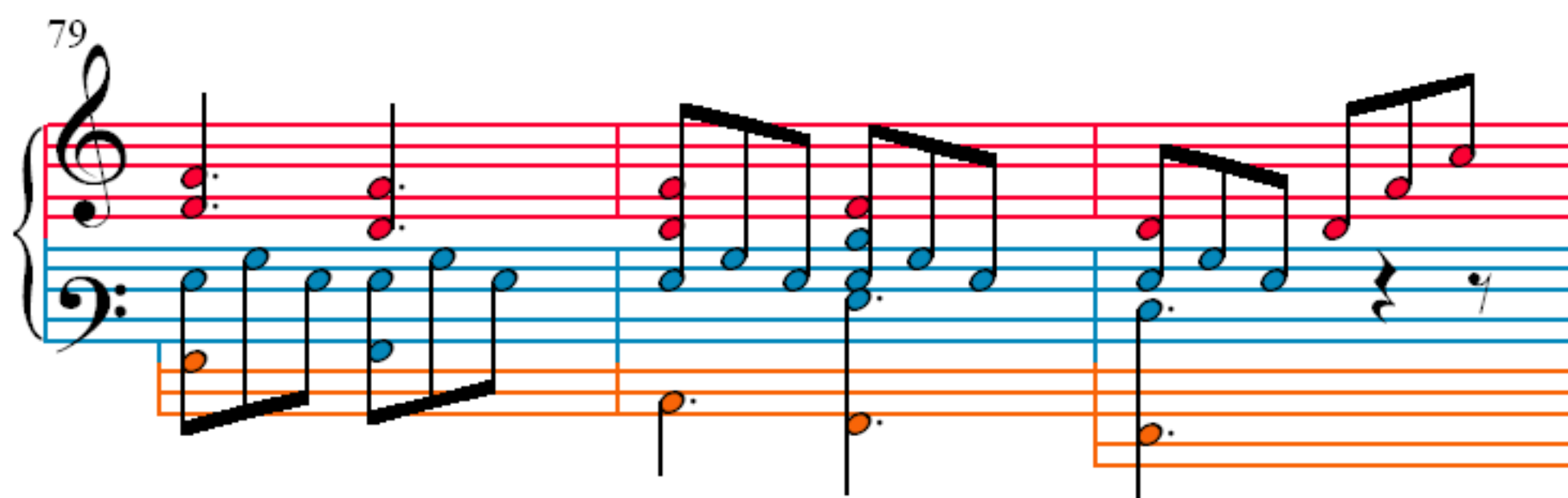
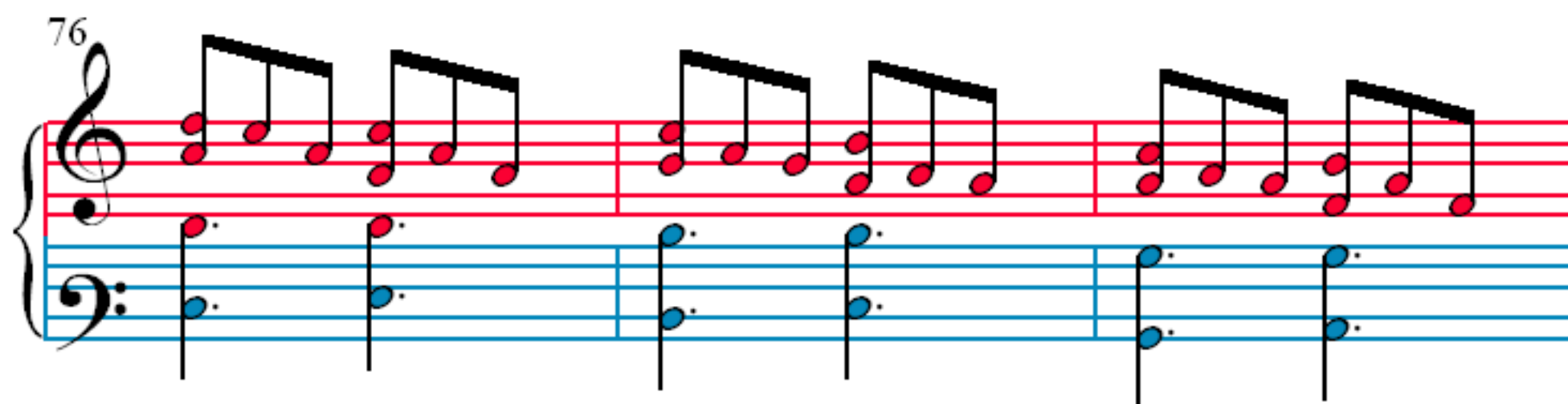
Measures 64-66. Treble clef: eighth-note chords. Bass clef: chords. A green line is above the treble clef.

67

Measures 67-69. Treble clef: eighth-note chords. Bass clef: chords. A green line is above the treble clef.

70

Measures 70-72. Treble clef: eighth-note chords. Bass clef: chords. A green line is above the treble clef.



85

Measures 85-86. Treble clef: two measures of dotted quarter notes. Bass clef: two measures of dotted quarter notes. A third staff below has eighth notes.

87

Measures 87-89. Treble clef: two measures of eighth notes, followed by a measure of eighth notes. Bass clef: two measures of dotted quarter notes, followed by a measure of eighth notes. A third staff below has eighth notes.

90

Measures 90-92. Treble clef: two measures of eighth notes, followed by a measure of eighth notes. Bass clef: two measures of dotted quarter notes, followed by a measure of eighth notes. A third staff below has eighth notes.

93

Measures 93-95. Treble clef: two measures of eighth notes, followed by a measure of eighth notes. Bass clef: two measures of dotted quarter notes, followed by a measure of eighth notes. A third staff below has eighth notes.