

Britain's Favored Isle

J. Major (?-?)

1

3

5

7

9

Measures 9 and 10 of the piece. The notation is for a piano accompaniment with three staves: Treble, Bass, and a lower staff (likely for a second Bass or a different instrument). The Treble staff uses a G-clef and contains eighth and sixteenth notes, some with ties. The Bass staff uses an F-clef and contains similar rhythmic patterns. The lower staff contains whole and half notes. The notes are color-coded: red for Treble, blue for Bass, and orange for the lower staff. Measure 9 ends with a repeat sign, and measure 10 ends with a final note.

11

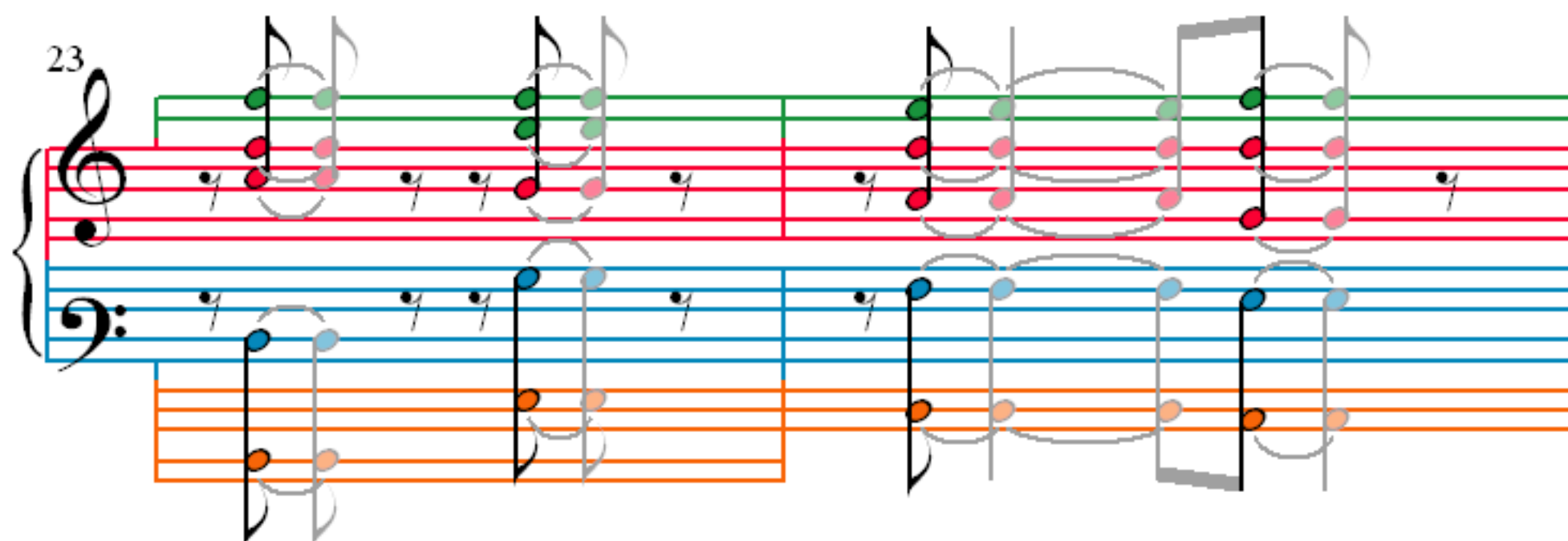
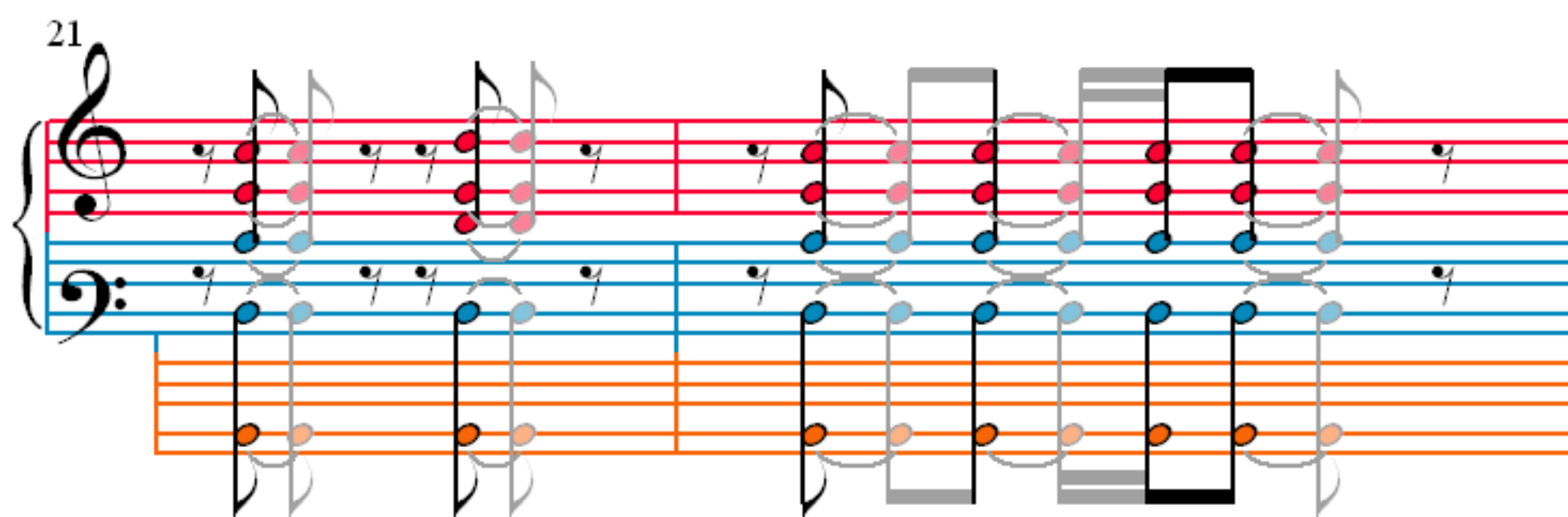
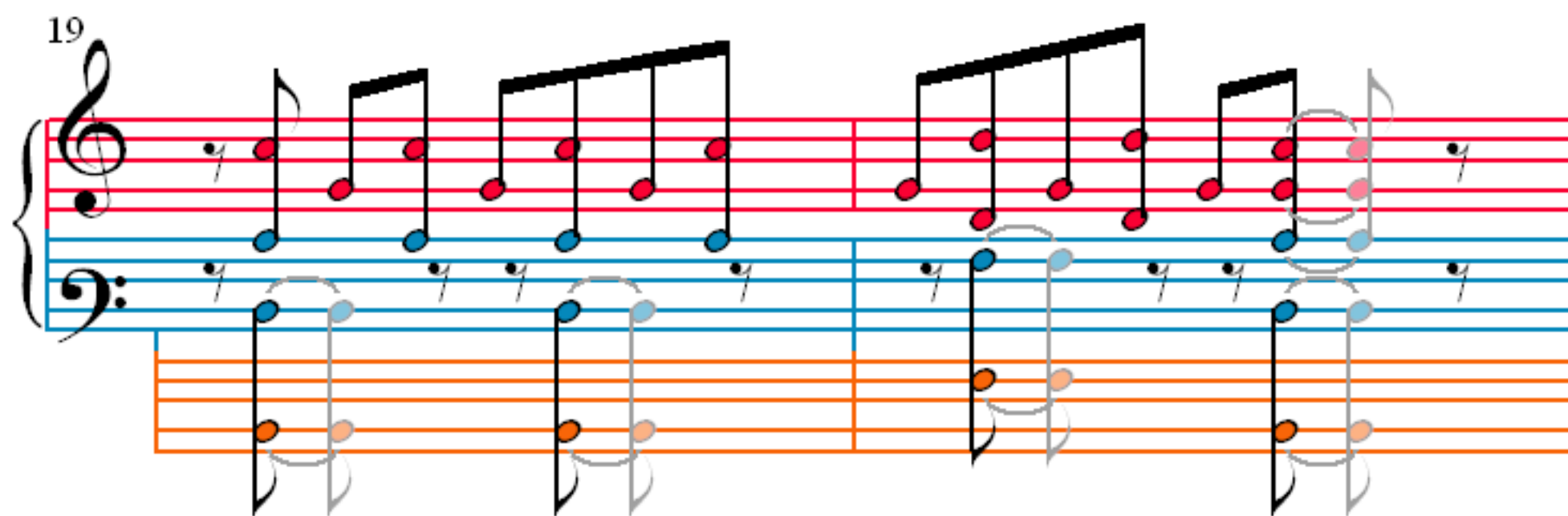
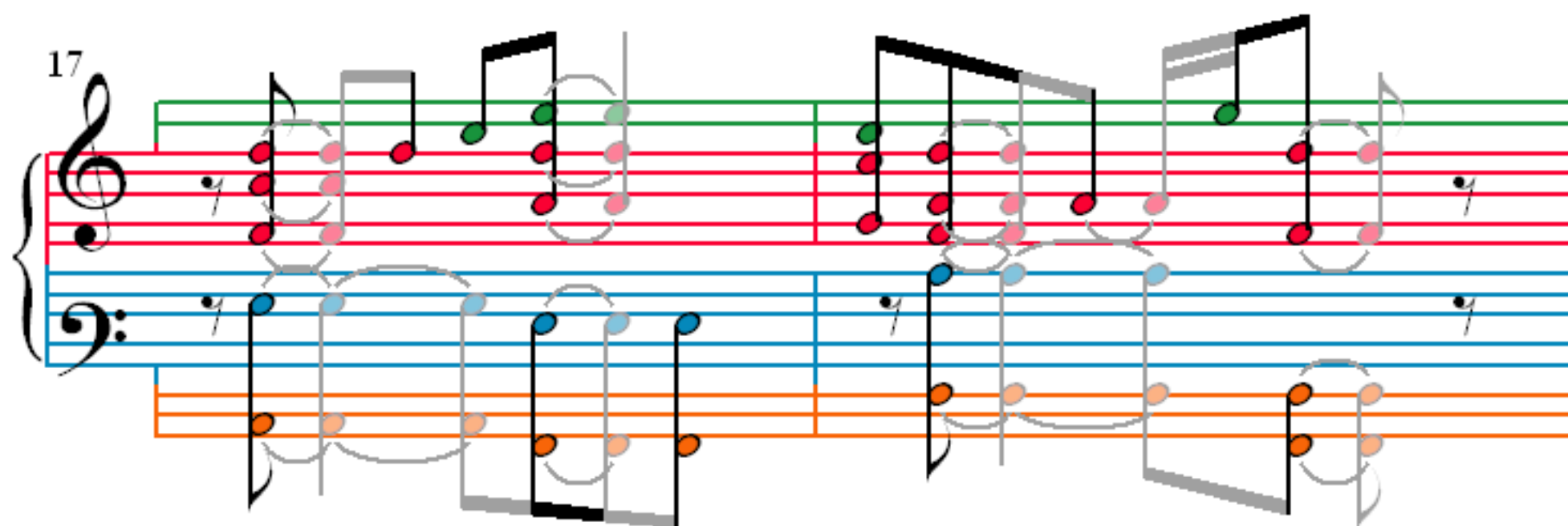
Measures 11 and 12. The notation continues with the same three-staff structure. Measure 11 features a repeat sign and a final note. Measure 12 ends with a final note. The color-coding remains consistent: red for Treble, blue for Bass, and orange for the lower staff.

13

Measures 13 and 14. The notation continues with the same three-staff structure. Measure 13 features a repeat sign and a final note. Measure 14 ends with a final note. The color-coding remains consistent: red for Treble, blue for Bass, and orange for the lower staff.

15

Measures 15 and 16. The notation continues with the same three-staff structure. Measure 15 features a repeat sign and a final note. Measure 16 ends with a final note. The color-coding remains consistent: red for Treble, blue for Bass, and orange for the lower staff.



25

27

29

31

33

Measures 33 and 34. Treble clef has a green ledger line above. Notes are red in treble and blue in bass. A third system of orange and pink staves is below.

35

Measures 35 and 36. Treble clef has a green ledger line above. Notes are red in treble and blue in bass. A third system of orange and pink staves is below.

37

Measures 37 and 38. Treble clef has a green ledger line above. Notes are red in treble and blue in bass. A third system of orange and pink staves is below.

39

Measures 39 and 40. Treble clef has a green ledger line above. Notes are red in treble and blue in bass. A third system of orange and pink staves is below.

41

43

45

47

49

51

53

55

57

59

61

63

65

67

69

71

73

75

77

79