

Sonatine I - Allegro

O 20, No. 1: 1

F. Kuhlau (1786–1832)

1

The image shows a musical score for the song 'The Rose Tree'. It is written for a single melodic line and a piano accompaniment. The melodic line is on a single staff with a treble clef, a key signature of one sharp (F#), and a 4/4 time signature. The piano accompaniment is on a grand staff (treble and bass clefs) with a 4/4 time signature. The score is divided into four measures. The first measure contains two eighth notes (G4 and A4) and a quarter note (B4). The second measure contains a quarter note (C5), an eighth note (D5), and a quarter note (E5). The third measure contains a quarter note (F#5), an eighth note (G5), and a quarter note (A5). The fourth measure contains a quarter note (B5), an eighth note (C6), and a quarter note (D6). The piano accompaniment consists of a single bass note (G2) in the first measure, followed by a single bass note (G2) in the second measure, and a single bass note (G2) in the third measure. The fourth measure is empty.

5

The musical score for Example 1 is presented in a four-measure format. The melody, written on a green staff with a treble clef, begins with a half note G4, followed by quarter notes A4, B4, and C5. The piano accompaniment, written on a red staff with a bass clef, consists of a steady eighth-note pattern in the right hand and a steady eighth-note pattern in the left hand. The melody ends with a quarter note D5, and the piano accompaniment ends with a quarter note D4.

9

12

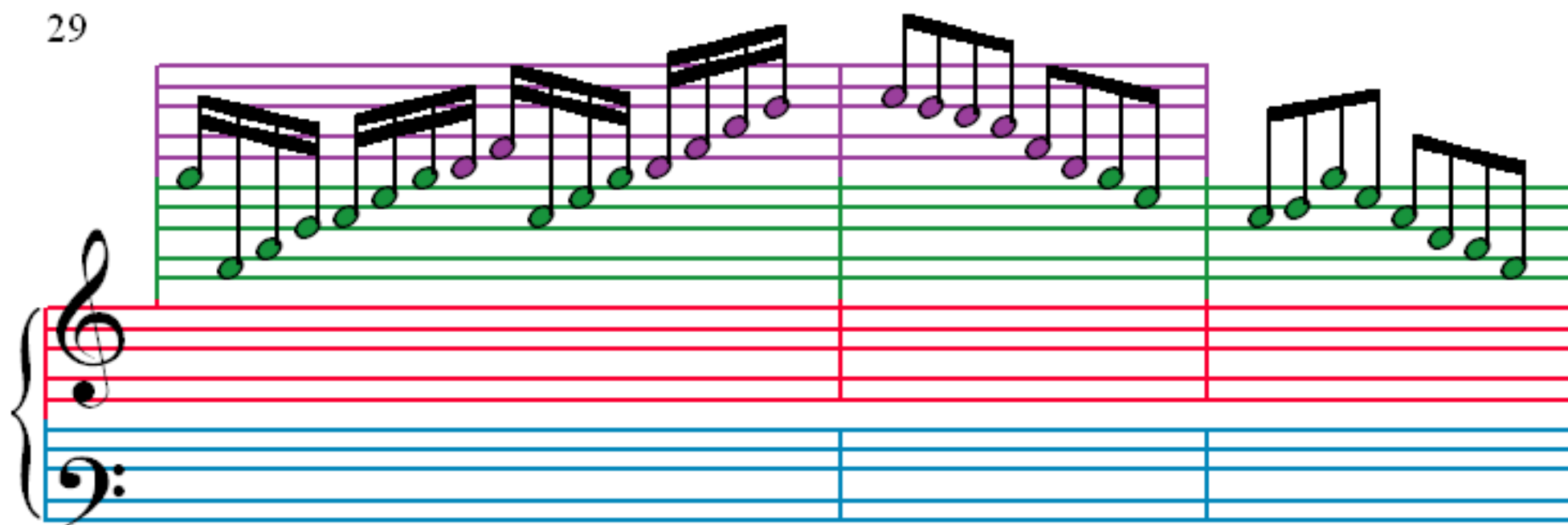
15

19

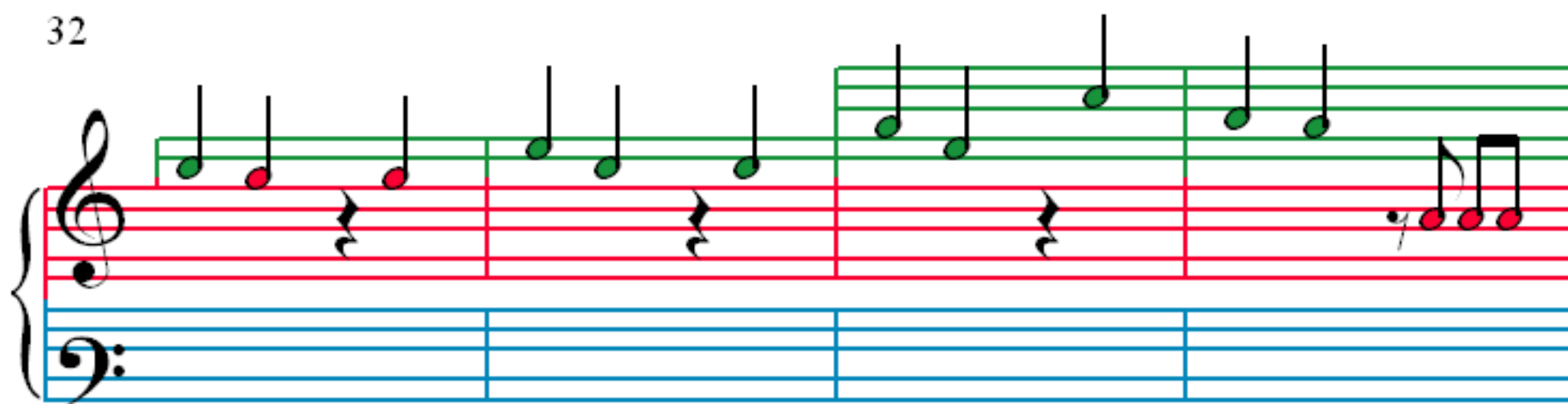
23

26

29



32



36



40



44

47

50

54

58

61

64

67

71

73

75

78