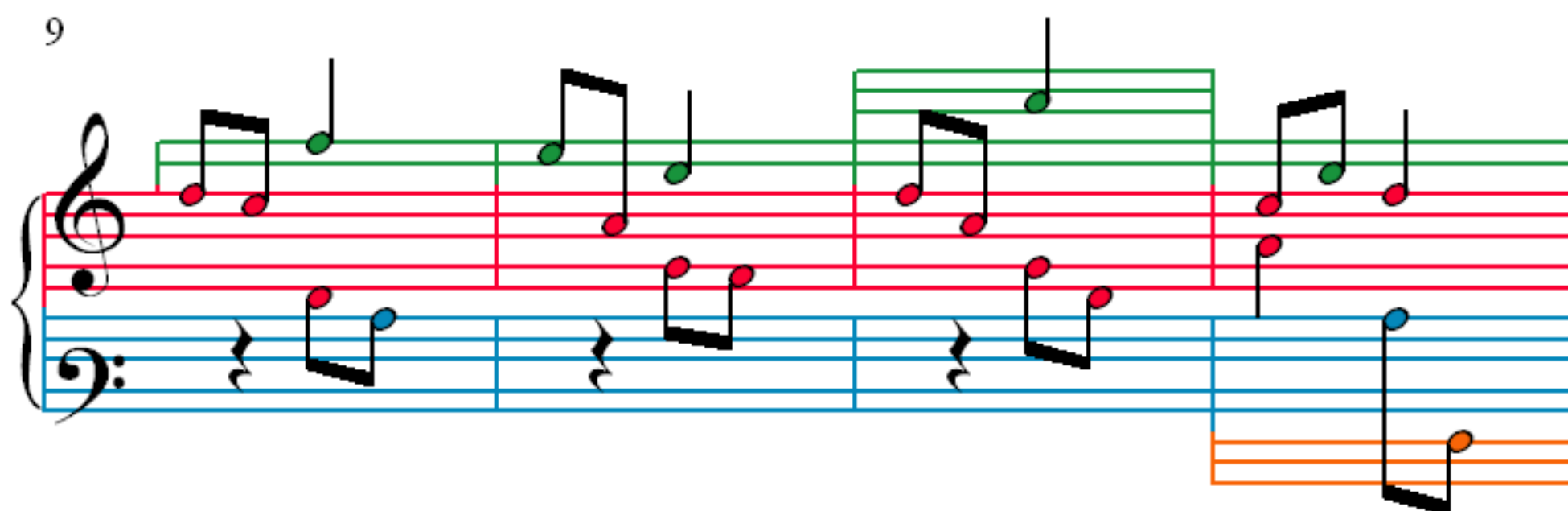
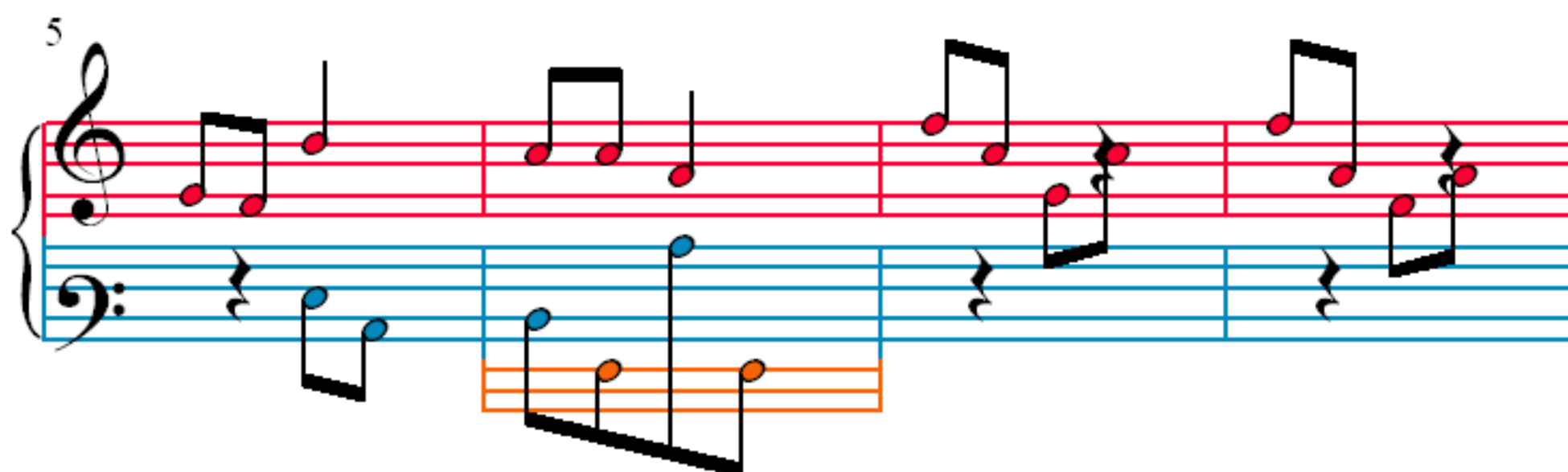
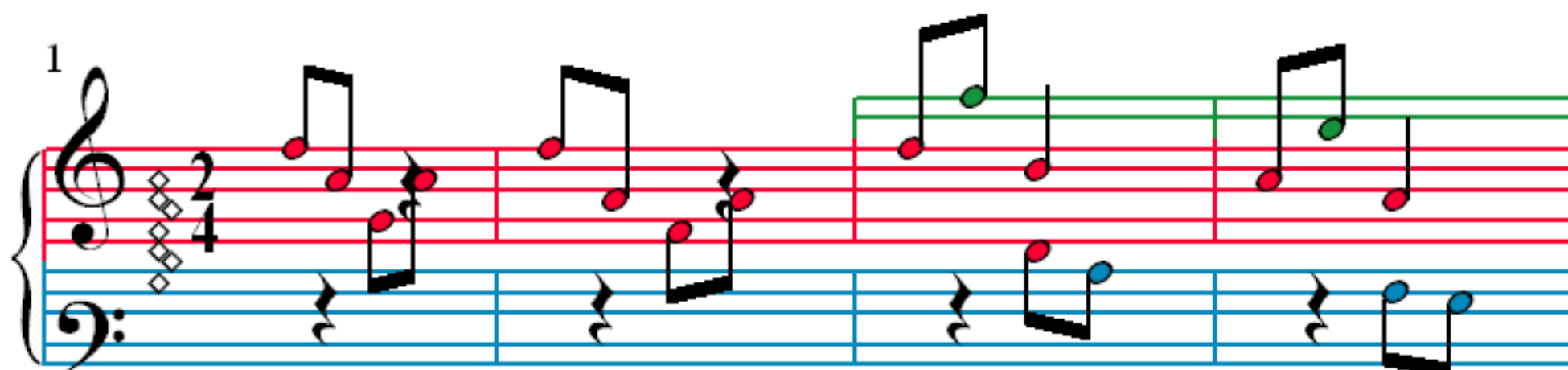
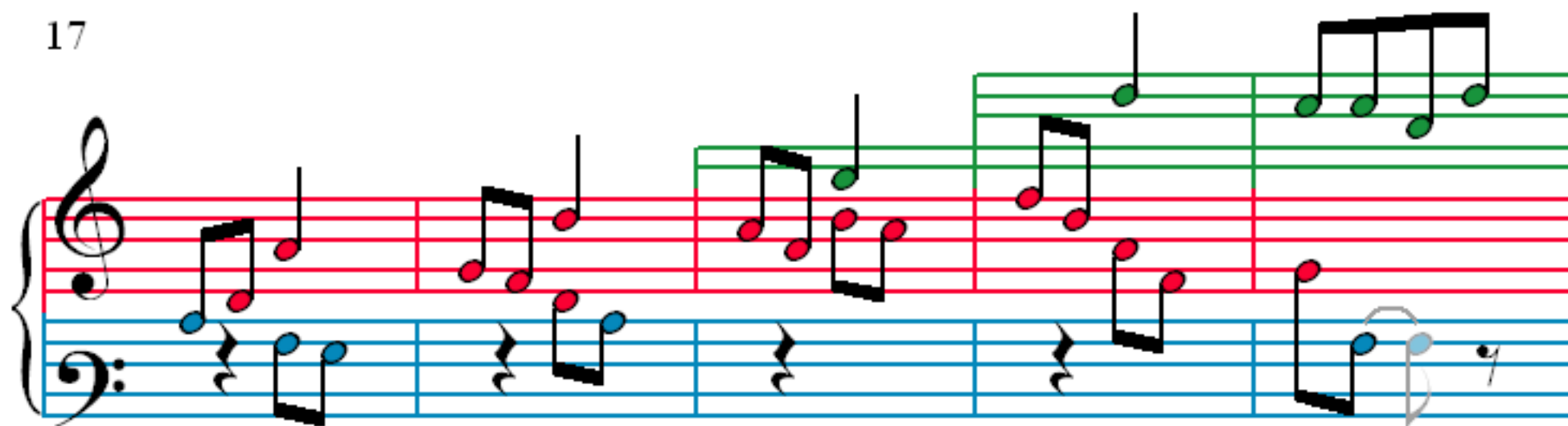


# Sonate II, III - Presto

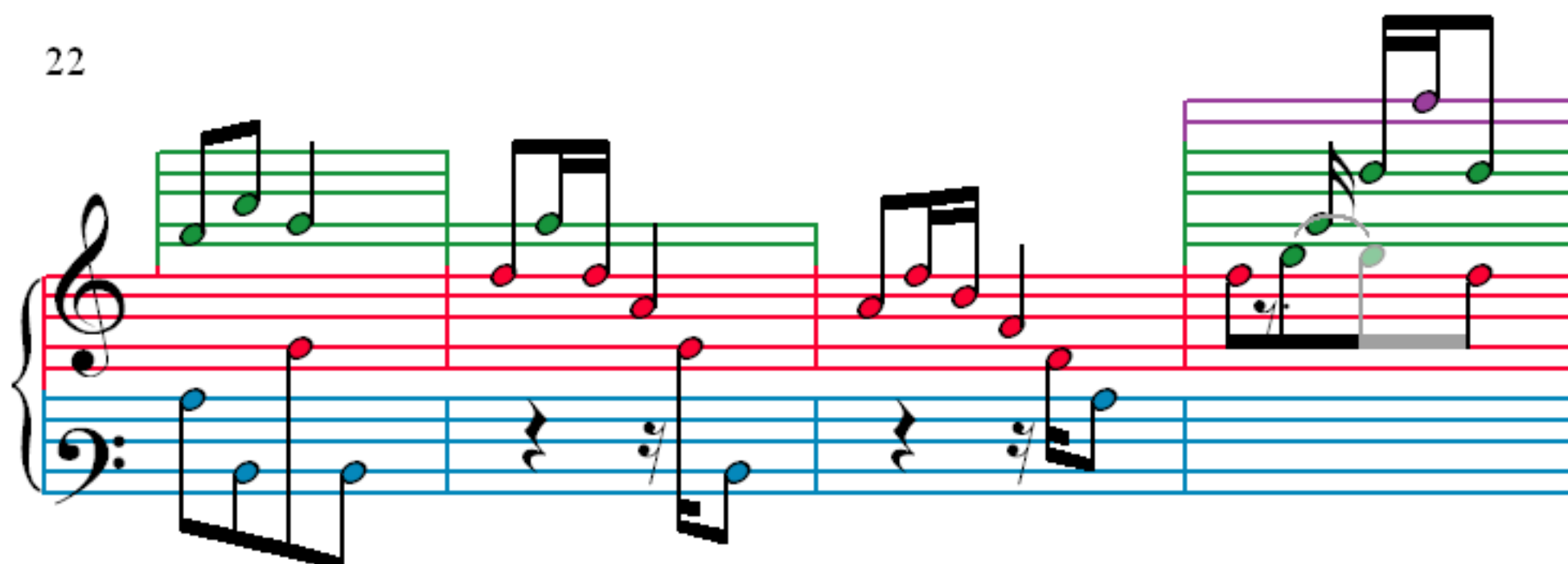
F. J. Haydn (1732–1809)



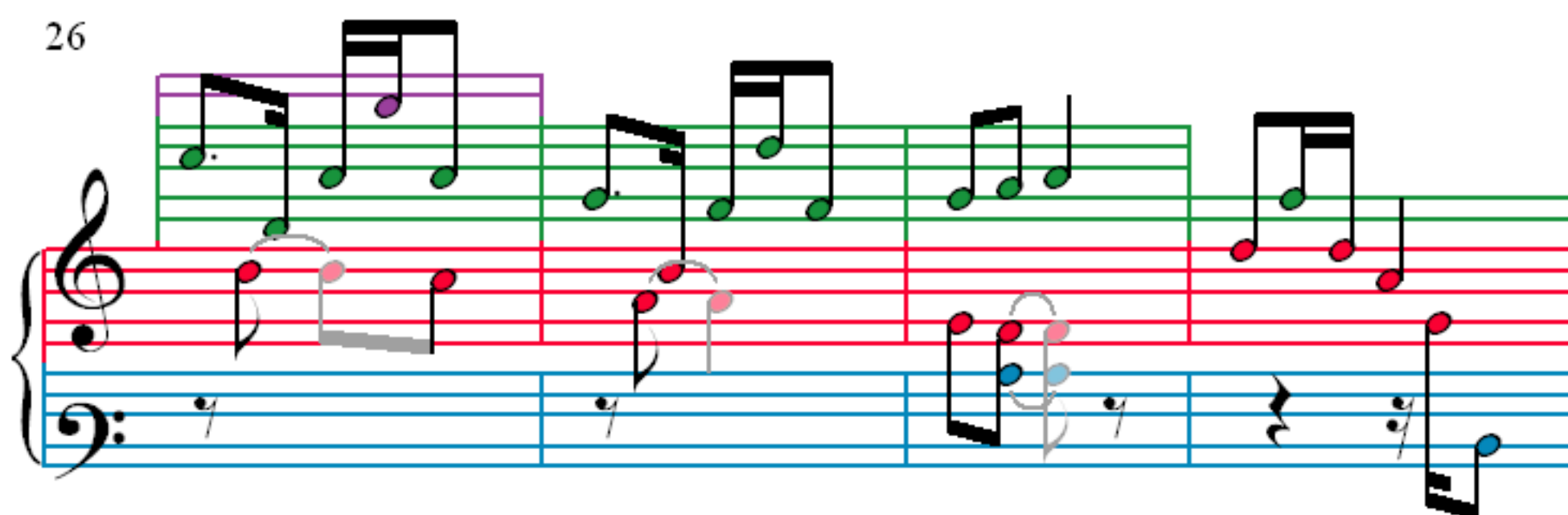
17



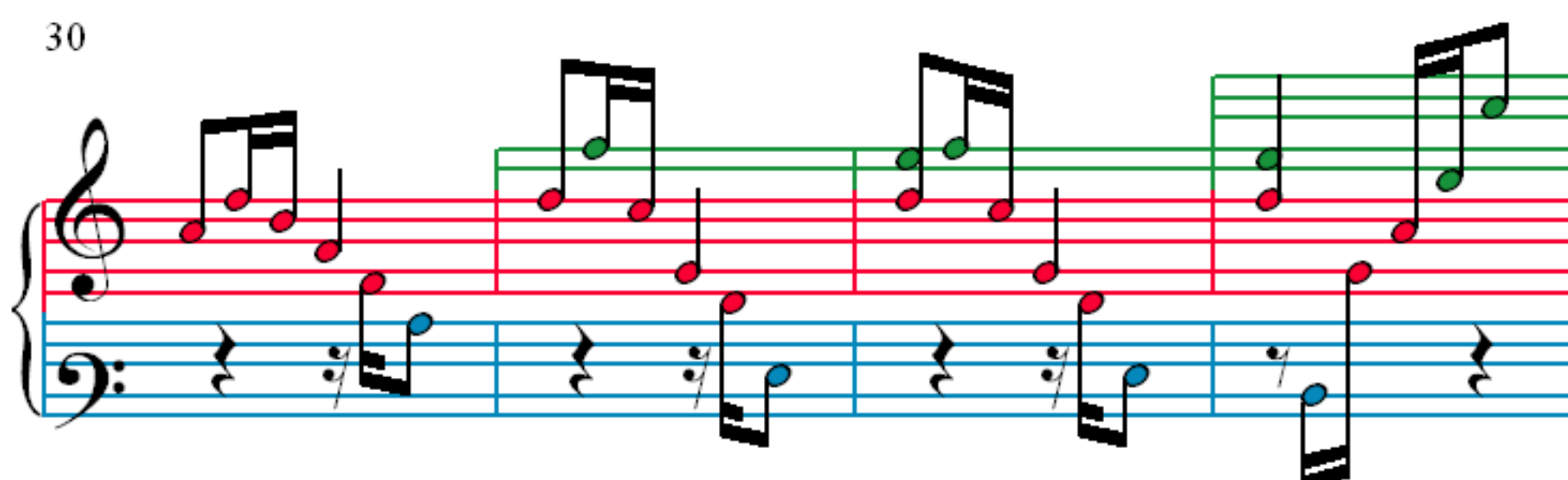
22



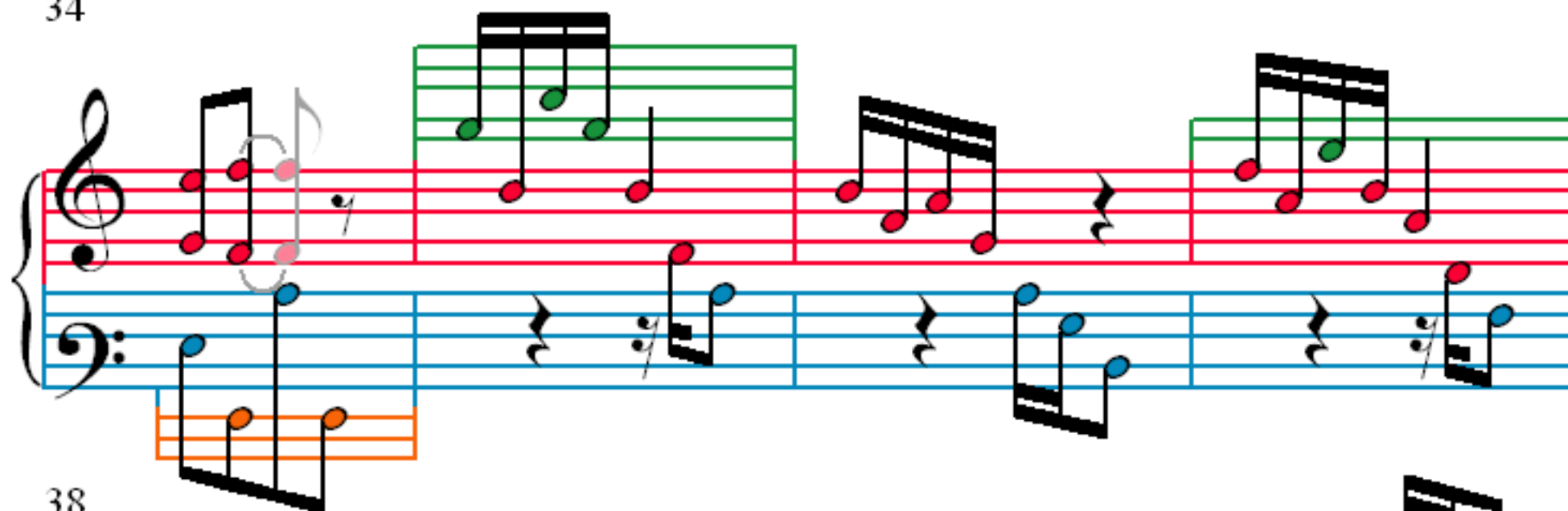
26



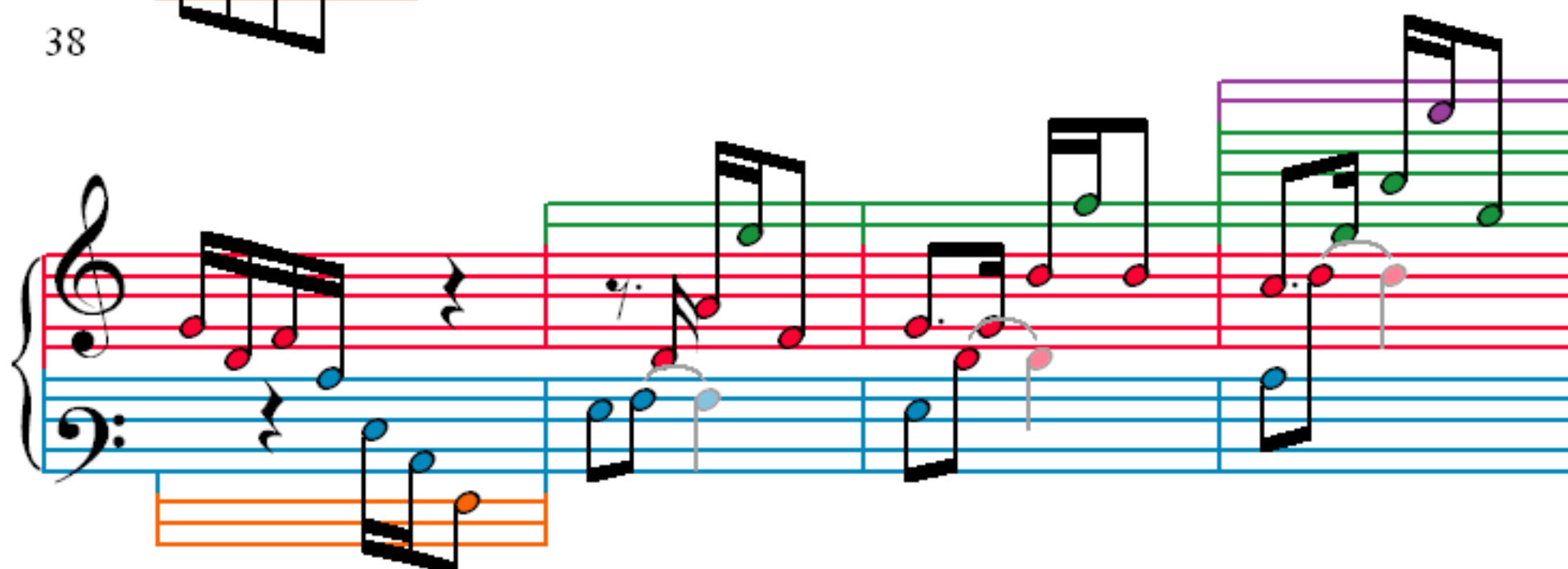
30



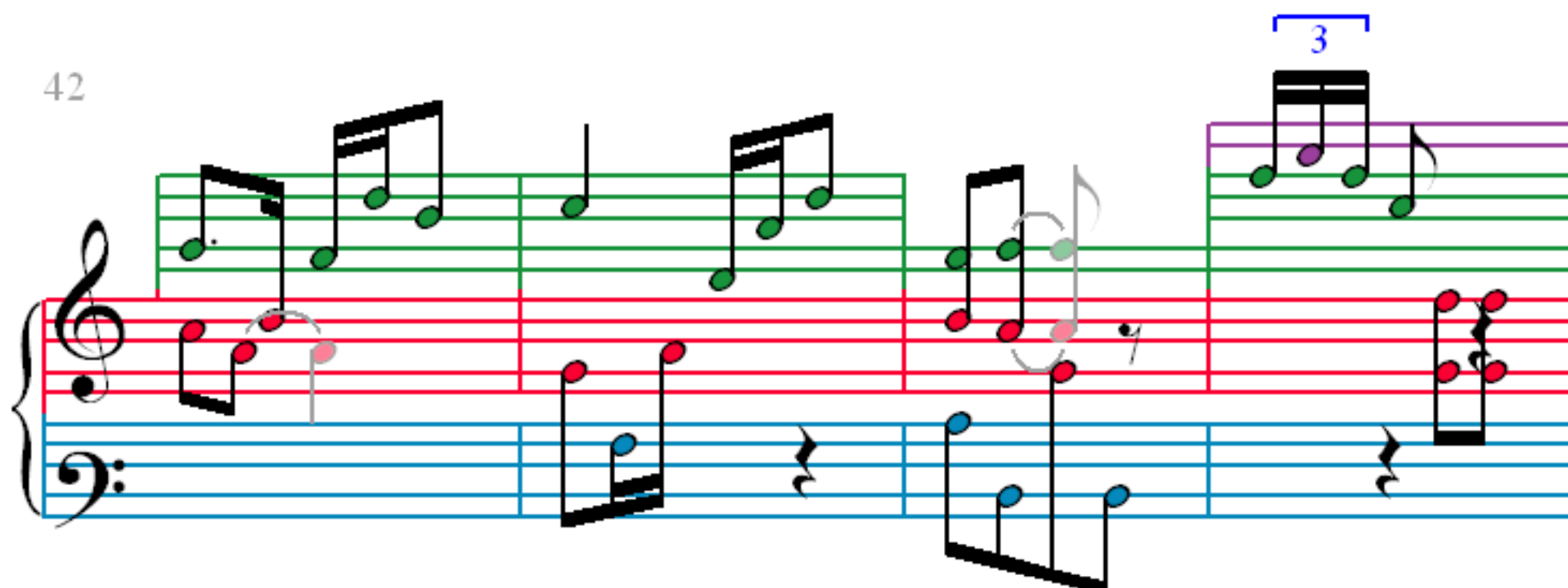
34



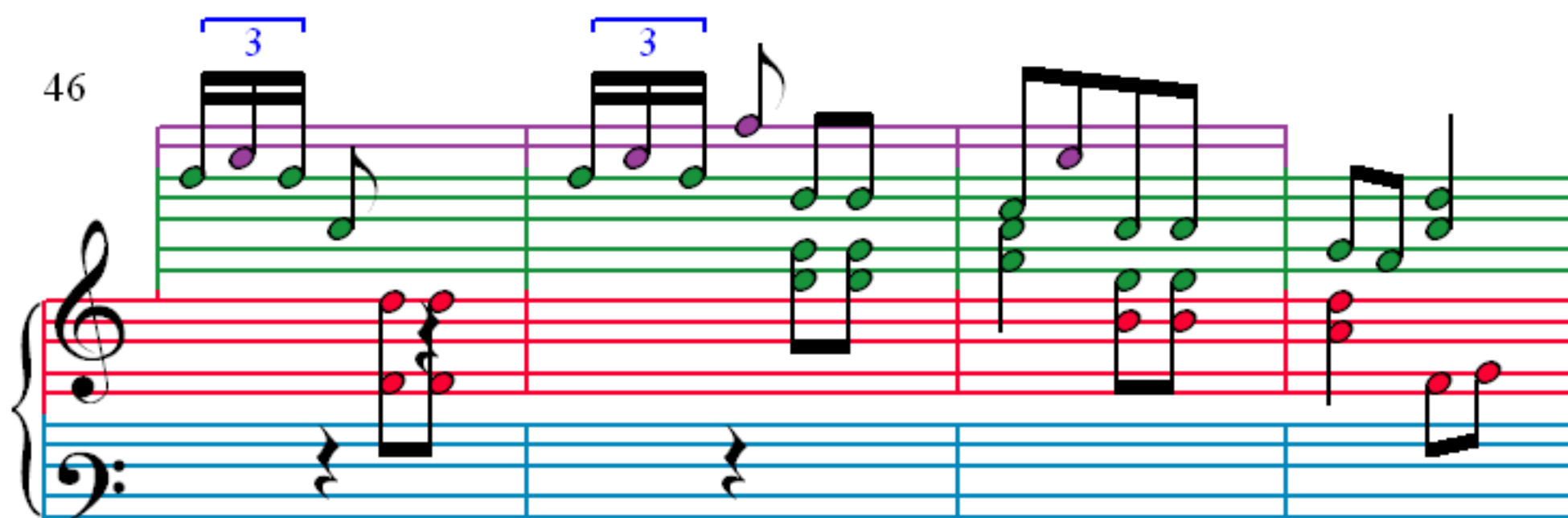
38



42



46



50

51

52

53

54

55

56

57

58

59

60

61

62

63

64

65

70

75

80

85

Measures 85-89. Treble clef: measures 85-86 have green notes (F4, G4, A4, B4); measures 87-89 have red notes (C5, B4, A4, G4). Bass clef: measures 85-86 have blue notes (F3, G3, A3, B3); measures 87-89 have orange notes (C4, B3, A3, G3). Measure 85 has a grey slur over the first two notes of the treble staff.

90

Measures 90-94. Treble clef: measures 90-91 have green notes (F4, G4, A4, B4); measures 92-94 have red notes (C5, B4, A4, G4). Bass clef: measures 90-91 have blue notes (F3, G3, A3, B3); measures 92-94 have orange notes (C4, B3, A3, G3). Measure 90 has a grey slur over the first two notes of the treble staff.

95

Measures 95-99. Treble clef: measures 95-96 have green notes (F4, G4, A4, B4); measures 97-99 have red notes (C5, B4, A4, G4). Bass clef: measures 95-96 have blue notes (F3, G3, A3, B3); measures 97-99 have orange notes (C4, B3, A3, G3).

100

Measures 100-104. Treble clef: measures 100-101 have green notes (F4, G4, A4, B4); measures 102-104 have red notes (C5, B4, A4, G4). Bass clef: measures 100-101 have blue notes (F3, G3, A3, B3); measures 102-104 have orange notes (C4, B3, A3, G3). Measure 100 has a grey slur over the first two notes of the treble staff.

105

109

113

117

121

Measures 121-123. Treble clef has a green line above the staff. Bass clef has an orange line below the staff. Notes are colored red, blue, and orange.

124

Measures 124-126. Treble clef has a green line above the staff. Bass clef has an orange line below the staff. Notes are colored red, blue, and orange.

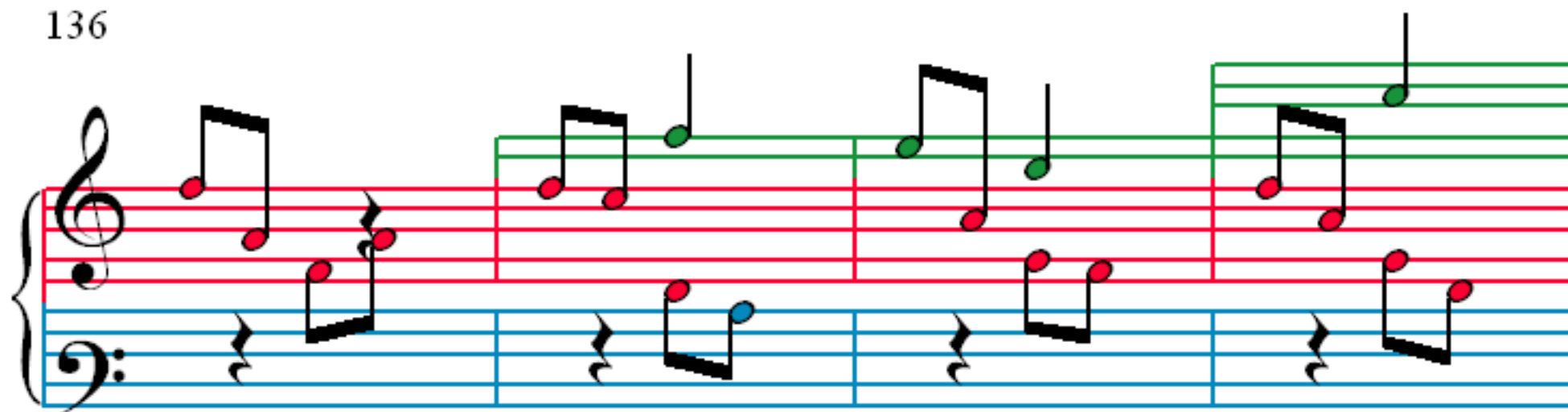
127

Measures 127-130. Treble clef has a green line above the staff. Bass clef has an orange line below the staff. Notes are colored red, blue, and orange.

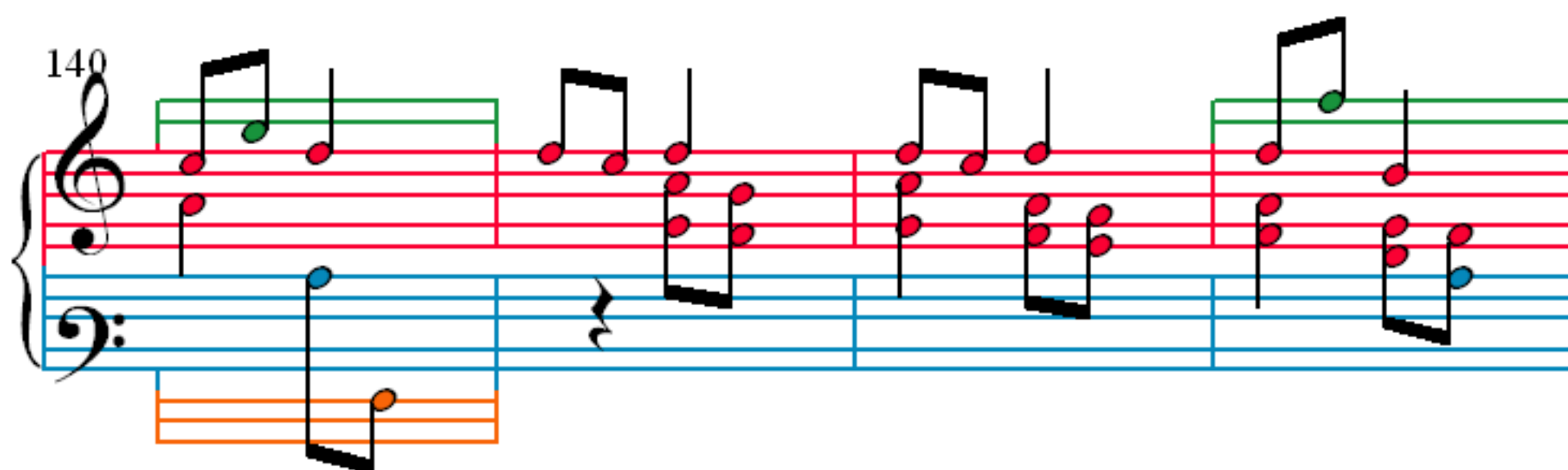
131

Measures 131-134. Treble clef has a green line above the staff. Bass clef has an orange line below the staff. Notes are colored red, blue, and orange.

136



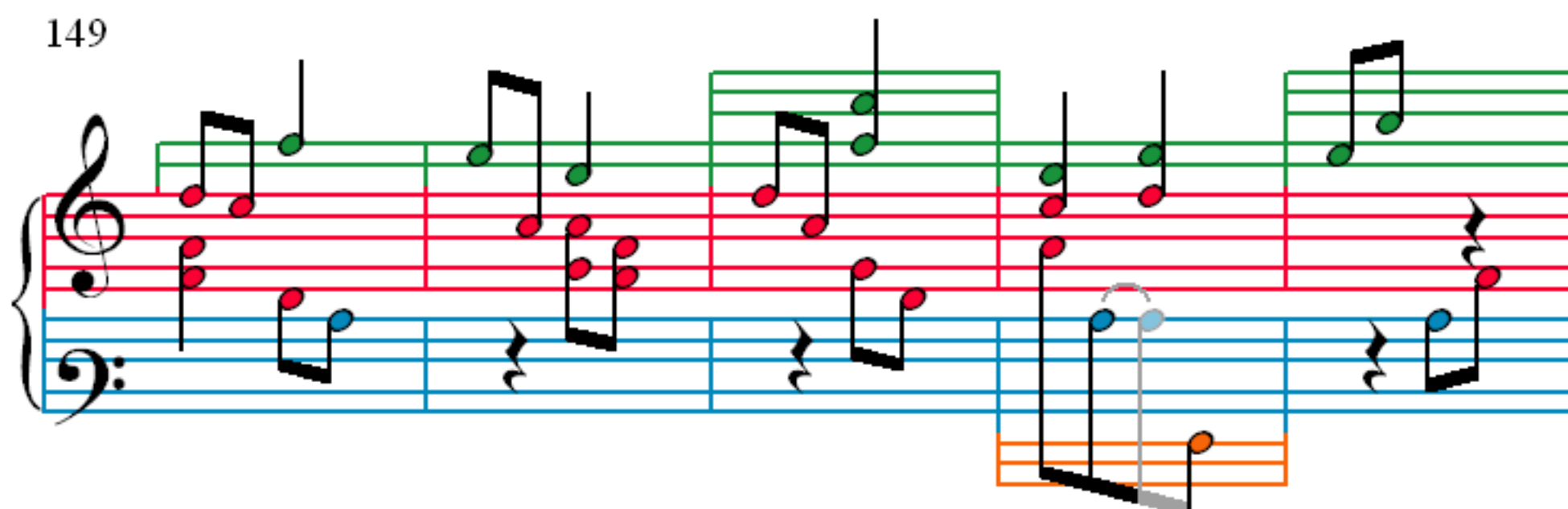
140



144



149



[illegible]

163

The musical score for Example 163 consists of a piano accompaniment. It features a treble staff with a green staff above it and a bass staff with an orange staff below it. The music is in 4/4 time and features a repeating pattern of eighth notes and quarter notes. The treble staff has a green staff above it, and the bass staff has an orange staff below it. The music is in 4/4 time and features a repeating pattern of eighth notes and quarter notes.

168