

# HWV361-score-3

## Sonata for Violin and Piano HWV 361

G. F. Handel (1685–1759)

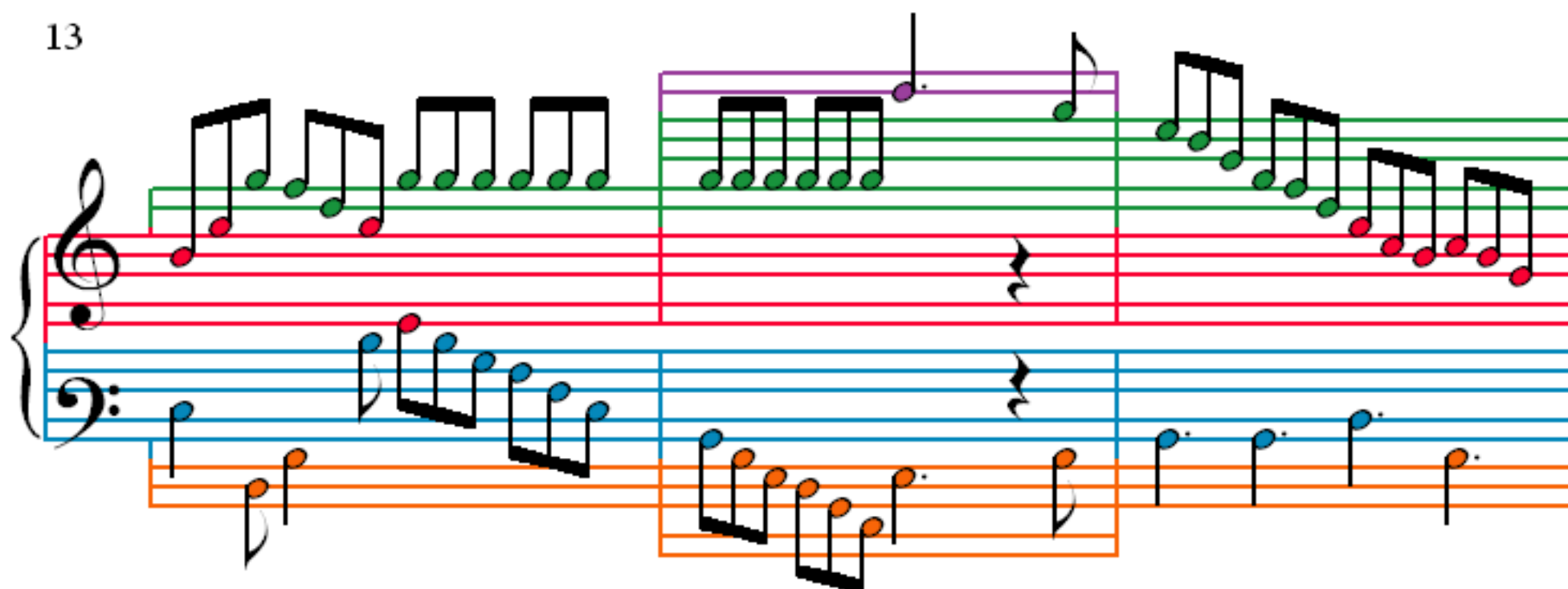
1

4

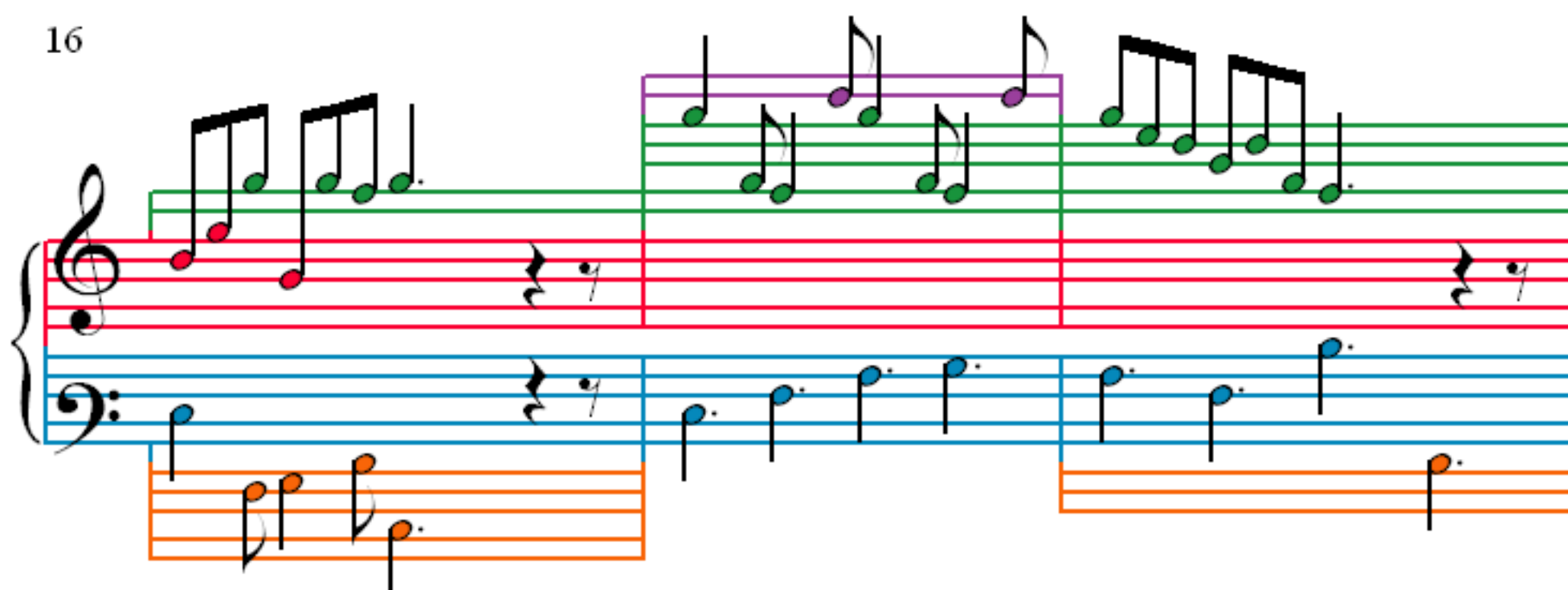
7

10

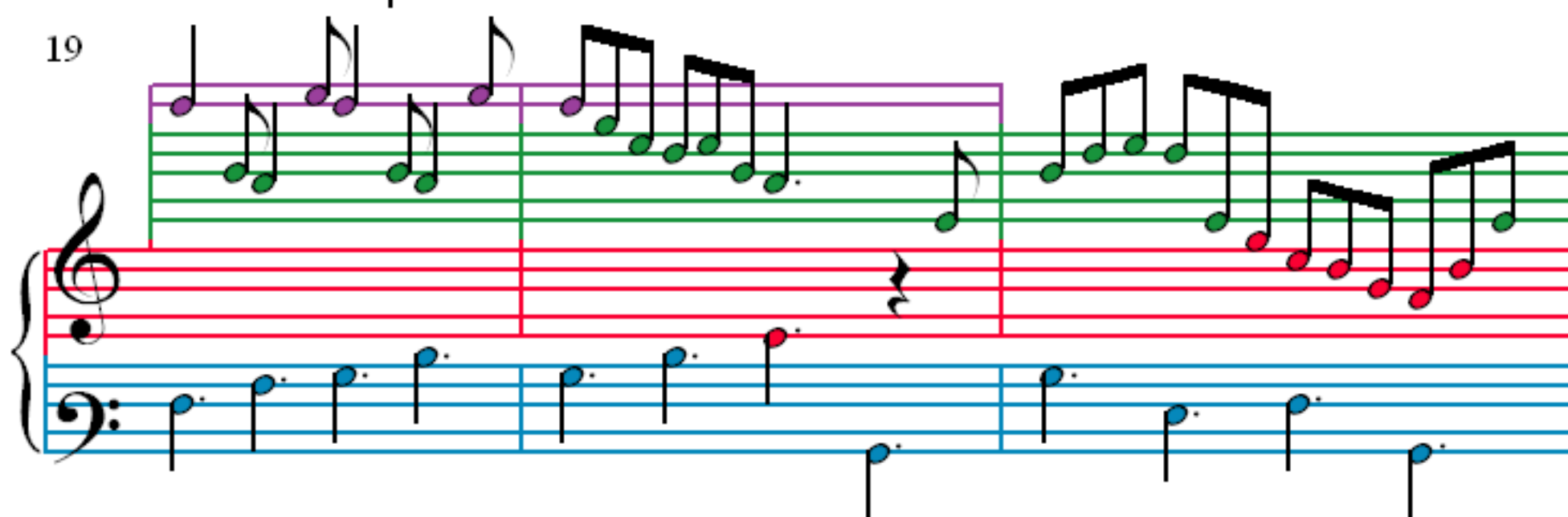
13



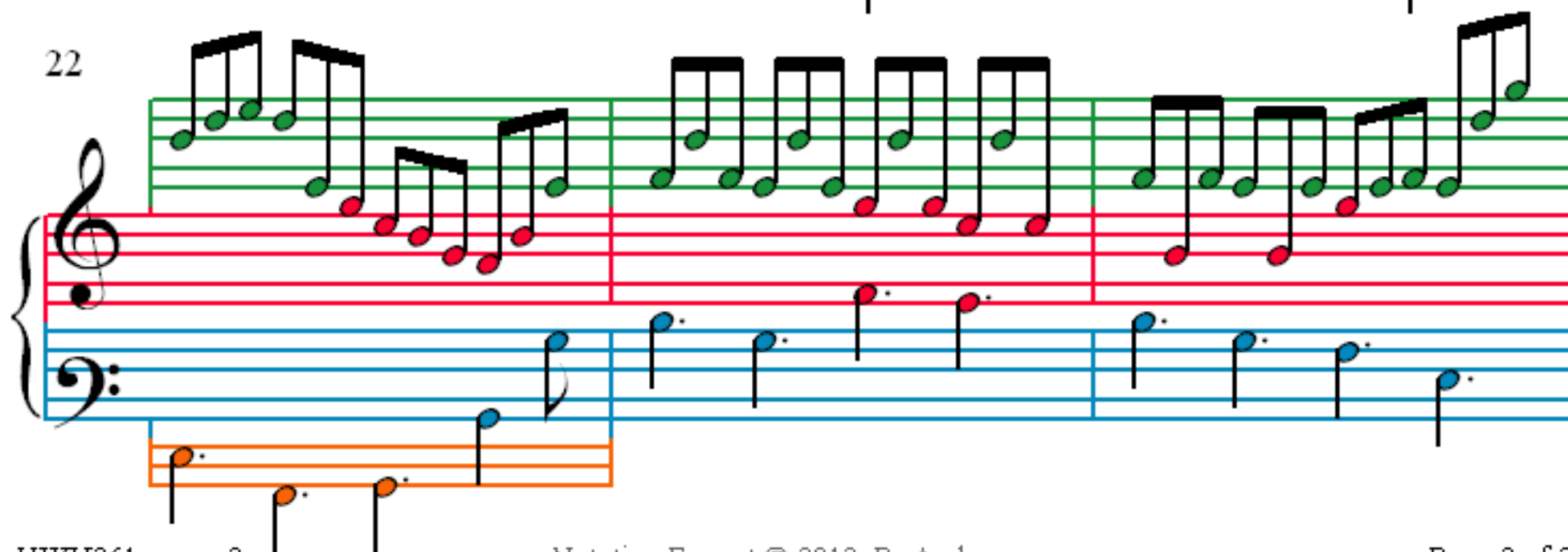
16



19



22



25

28

The musical score for Example 10.10 is presented in a grand staff format. The right hand (treble clef) is divided into two staves: a green staff and a red staff. The left hand (bass clef) is divided into two staves: a blue staff and an orange staff. The music is in 4/4 time. The right hand features a variety of note values, including eighth and sixteenth notes, and rests. The left hand features a variety of note values, including eighth and sixteenth notes, and rests. The score is divided into three measures by vertical bar lines.

31

The musical score for Example 31 consists of two staves. The treble staff (top) features a series of eighth and sixteenth notes, with some notes highlighted in green and others in red. The bass staff (bottom) features a series of eighth and sixteenth notes, with some notes highlighted in blue and others in orange. The score is divided into three measures by vertical bar lines.

34

Example 10-10 (continued)