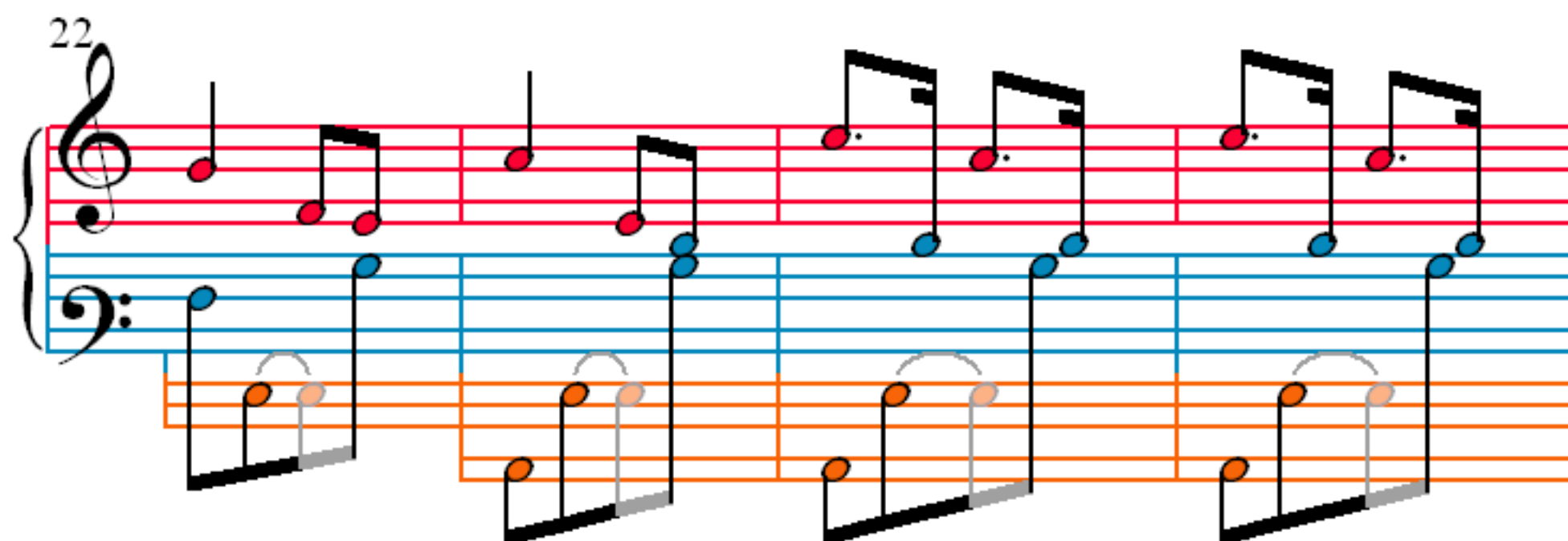
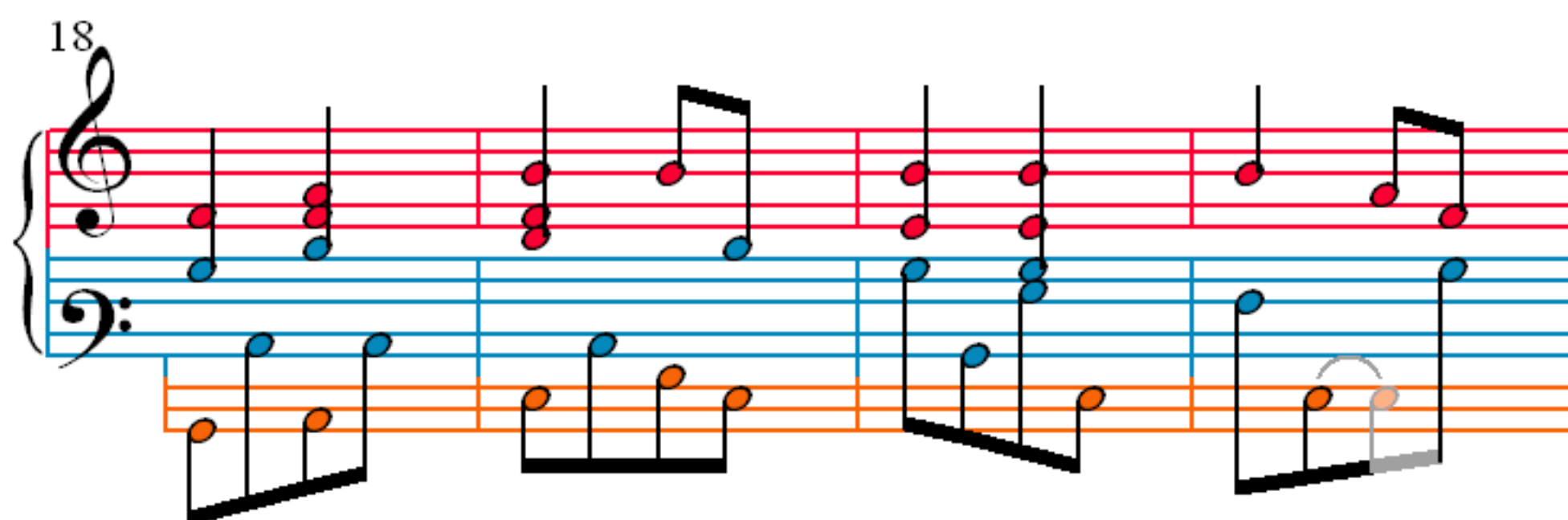
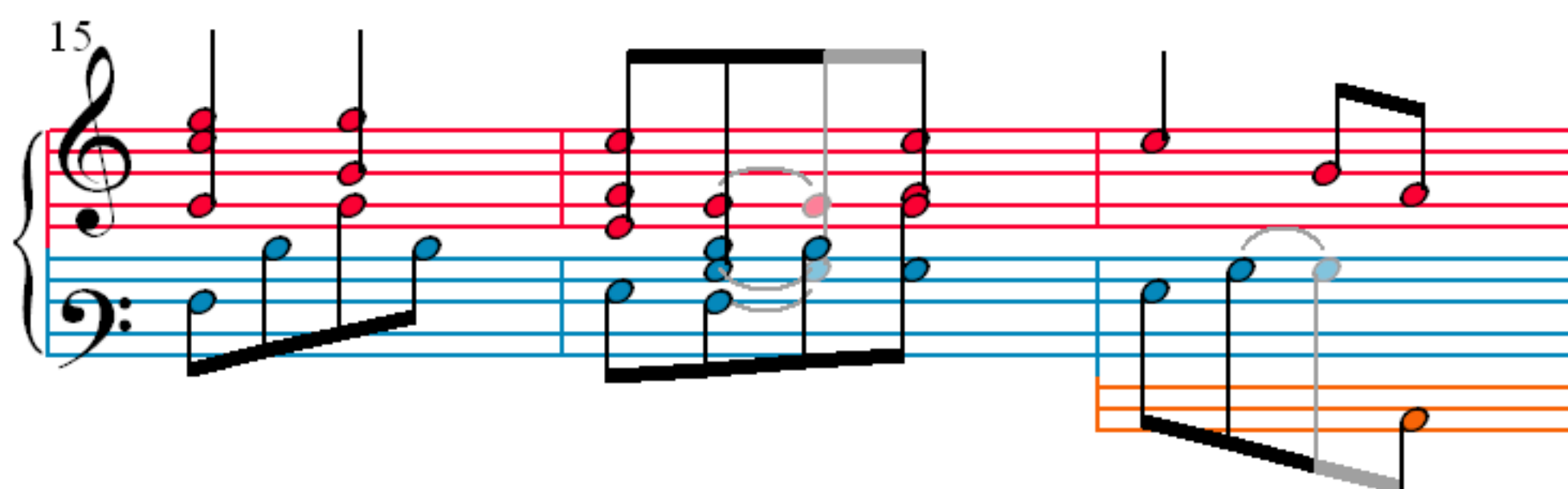
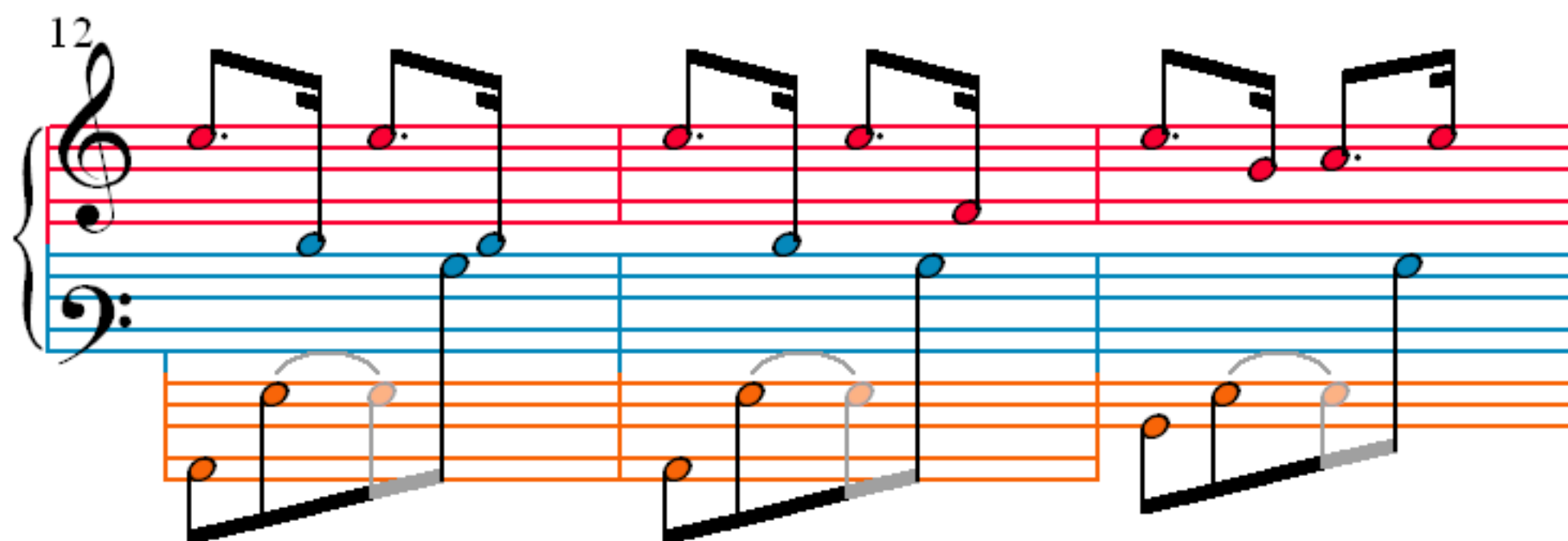


Les roses d'Ispahan

G. Fauré (1845–1924)

The image displays a musical score for the piece "Les roses d'Ispahan" by Gabriel Fauré. The score is written for piano and is organized into four systems, each containing a grand staff (treble and bass clefs). The key signature is one flat (B-flat) and the time signature is 2/4. The notation includes various musical symbols such as notes, rests, and slurs. The first system (measures 1-2) features a green bracket above the first measure and a measure number '1' above the second measure. The second system (measures 3-5) is marked with a measure number '3' at the beginning. The third system (measures 6-8) is marked with a measure number '6' at the beginning. The fourth system (measures 9-12) is marked with a measure number '9' at the beginning. The score uses a color-coded notation system: red for treble clef notes, blue for bass clef notes, and orange for notes in the lower register. Slurs are used to indicate phrasing across measures. The notation is presented in a clear, legible format suitable for educational or performance purposes.



26

30

34

37

41

Measures 41-44. Treble clef: quarter notes. Bass clef: eighth notes with ties and slurs.

45

Measures 45-48. Treble clef: quarter notes. Bass clef: eighth notes with ties and slurs.

49

Measures 49-52. Treble clef: quarter notes. Bass clef: eighth notes with ties and slurs.

53

Measures 53-56. Treble clef: quarter notes. Bass clef: eighth notes with ties and slurs.

57

60

63

66

