

Enchanted Island

S. C. Doonan (1952–)

1

5

9

13

Notation Format © 2012, R. Ambrose.

17

21

25

29

33

Measures 33-36. Treble clef: G4 (green), F#4 (red), E4 (red) with a slur. Bass clef: D3 (blue), C3 (blue), B2 (blue), A2 (blue) with a slur; G2 (orange), F#2 (orange), E2 (orange), D2 (orange) with a slur. A third staff shows G2 (orange), F#2 (orange), E2 (orange), D2 (orange) with a slur.

37

Measures 37-40. Treble clef: G4 (green), F#4 (red), E4 (red) with a slur. Bass clef: D3 (blue), C3 (blue), B2 (blue), A2 (blue) with a slur; G2 (orange), F#2 (orange), E2 (orange), D2 (orange) with a slur. A third staff shows G2 (orange), F#2 (orange), E2 (orange), D2 (orange) with a slur.

41

Measures 41-44. Treble clef: G4 (green), F#4 (red), E4 (red) with a slur. Bass clef: D3 (blue), C3 (blue), B2 (blue), A2 (blue) with a slur; G2 (orange), F#2 (orange), E2 (orange), D2 (orange) with a slur. A third staff shows G2 (orange), F#2 (orange), E2 (orange), D2 (orange) with a slur.

45

Measures 45-48. Treble clef: G4 (green), F#4 (red), E4 (red) with a slur. Bass clef: D3 (blue), C3 (blue), B2 (blue), A2 (blue) with a slur; G2 (orange), F#2 (orange), E2 (orange), D2 (orange) with a slur. A third staff shows G2 (orange), F#2 (orange), E2 (orange), D2 (orange) with a slur.

49

52

55

58

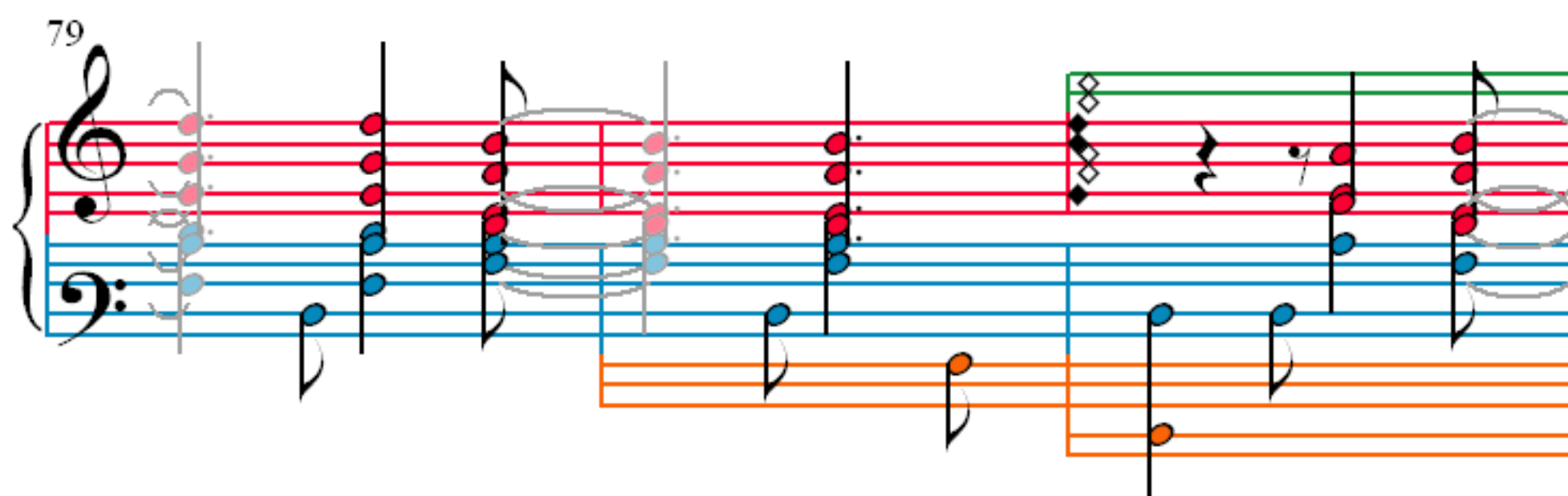
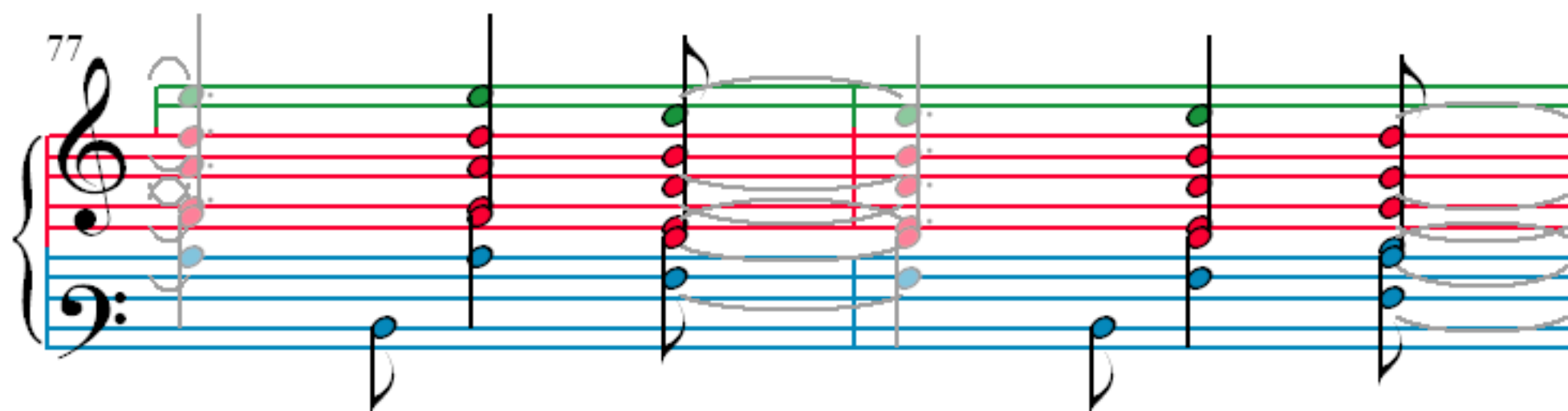
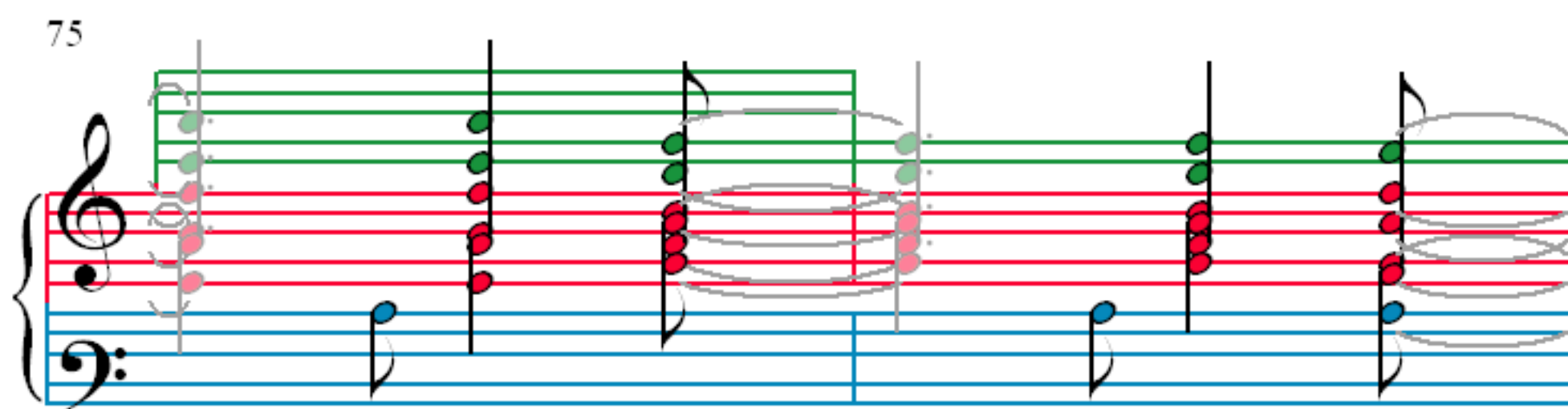
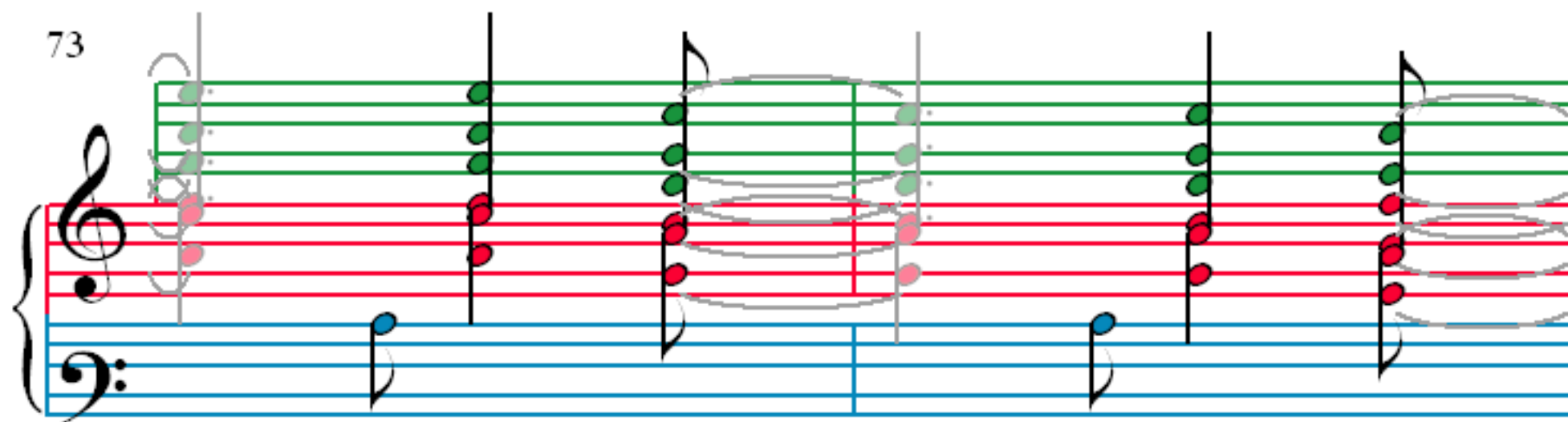
61

64

67

70

The image displays a musical score for a piece titled "Enchanted Island". The score is written for piano, featuring a grand staff with a treble clef and a bass clef, and a separate staff for a third instrument. The notation includes various musical symbols such as notes, rests, and ties, with some notes highlighted in different colors (red, blue, orange, green, purple). The score is divided into systems, with measures 61-63, 64-66, 67-69, and 70-72. The third instrument staff is only present in measures 61-63 and 67-70.



82

85

88

91

93

96

99

103

Measures 103-105 of a musical score. Measure 103 features a treble staff with a melodic line and a piano accompaniment in the bass staff. Measure 104 continues the piano accompaniment. Measure 105 shows a continuation of the piano accompaniment with a melodic line in the treble staff. The notation includes various note values, rests, and dynamic markings.

106

Measures 106-108 of a musical score. Measure 106 features a treble staff with a melodic line and a piano accompaniment in the bass staff. Measure 107 continues the piano accompaniment. Measure 108 shows a continuation of the piano accompaniment with a melodic line in the treble staff. The notation includes various note values, rests, and dynamic markings.

109

Measures 109-111 of a musical score. Measure 109 features a treble staff with a melodic line and a piano accompaniment in the bass staff. Measure 110 continues the piano accompaniment. Measure 111 shows a continuation of the piano accompaniment with a melodic line in the treble staff. The notation includes various note values, rests, and dynamic markings.

113

118

122