

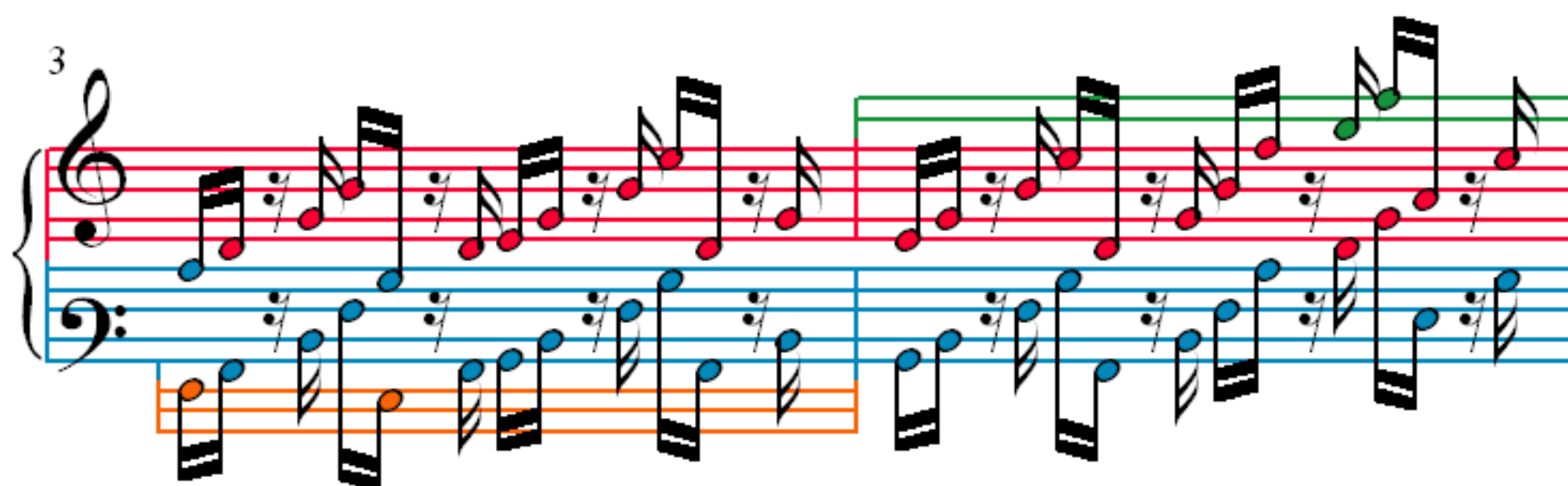
Sonate 2 b-moll

F. F. Chopin (1810–1849)

1



3

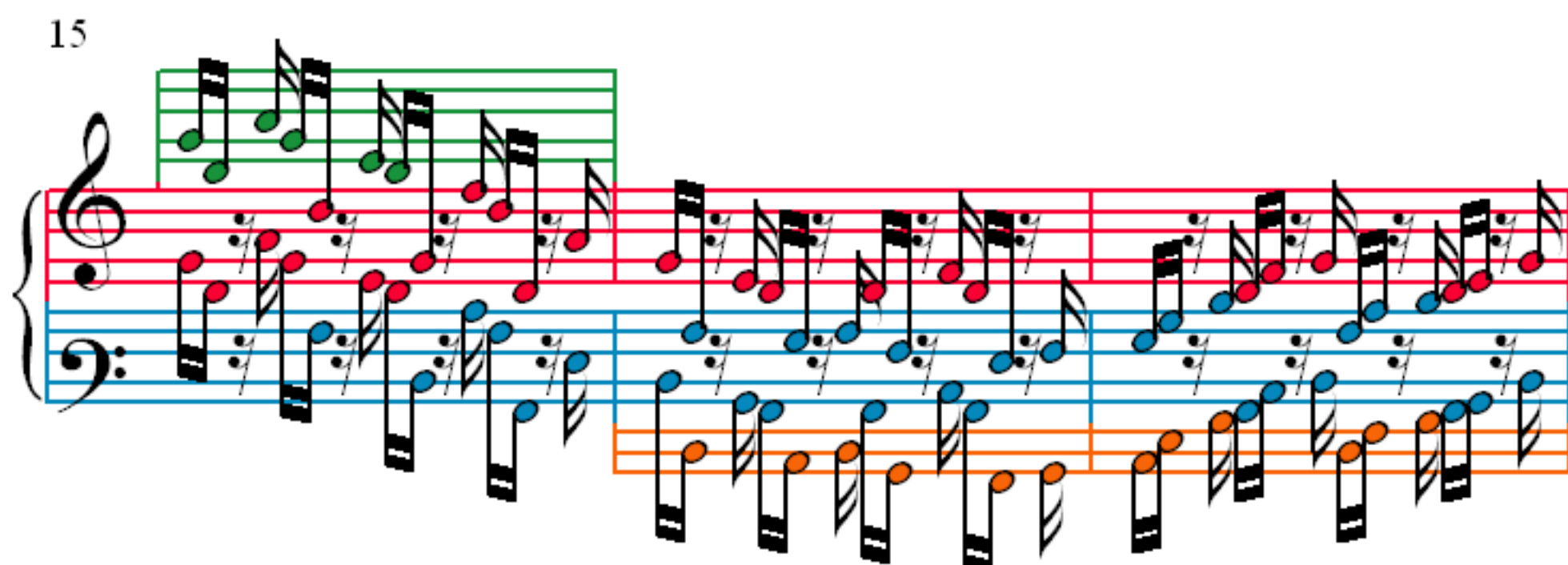
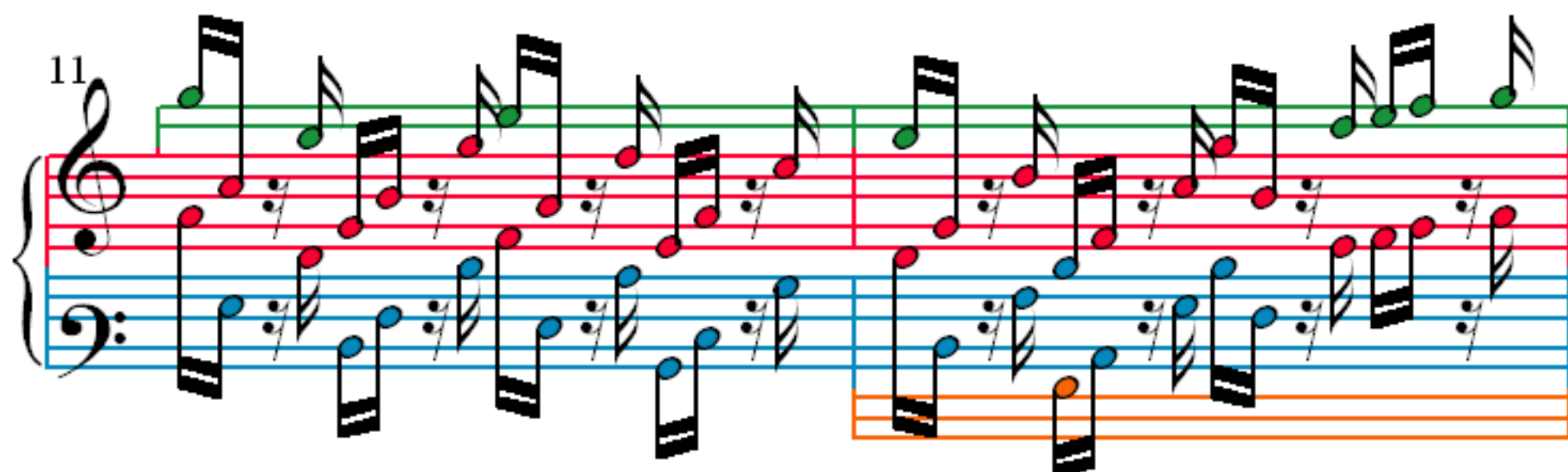
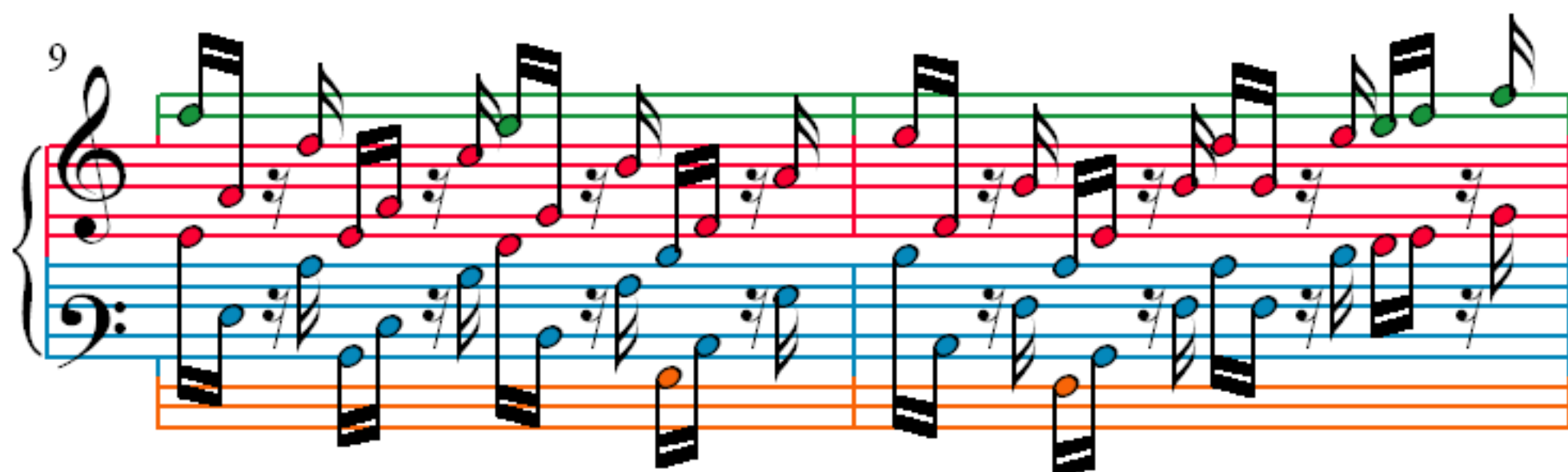


5



7





18

Measures 18 and 19. Treble clef: eighth-note chords. Bass clef: eighth-note chords. A third staff below: eighth-note chords.

20

Measures 20 and 21. Treble clef: eighth-note chords. Bass clef: eighth-note chords. A third staff below: eighth-note chords.

22

Measures 22 and 23. Treble clef: eighth-note chords. Bass clef: eighth-note chords. A third staff below: eighth-note chords.

24

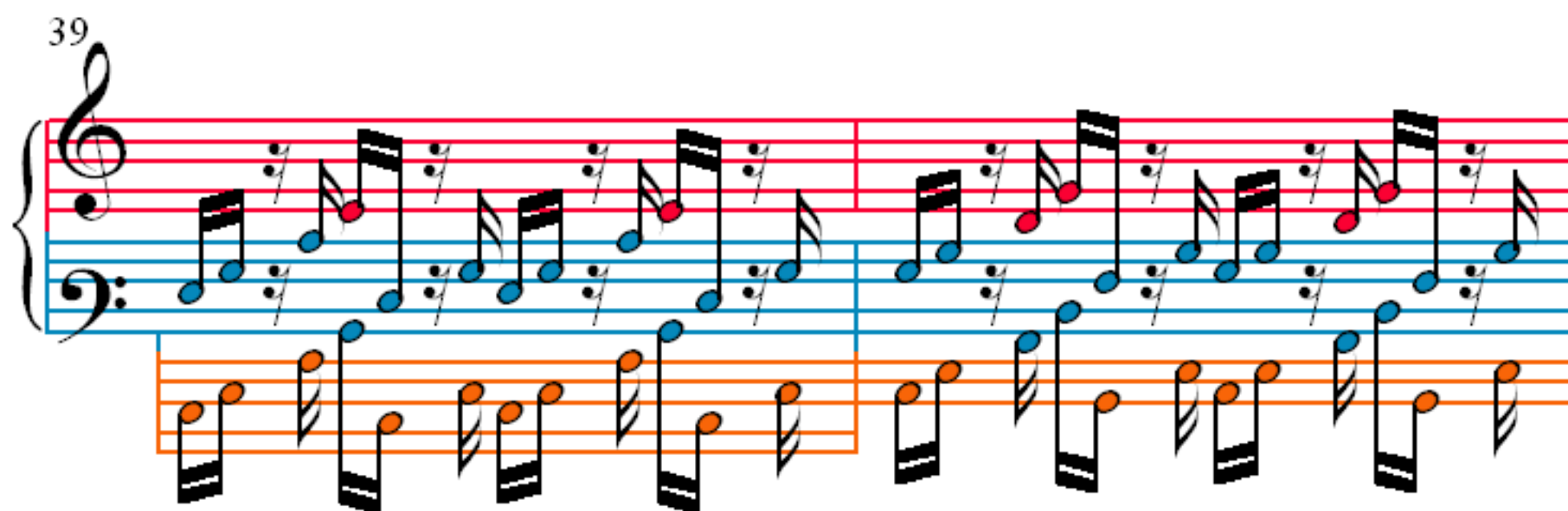
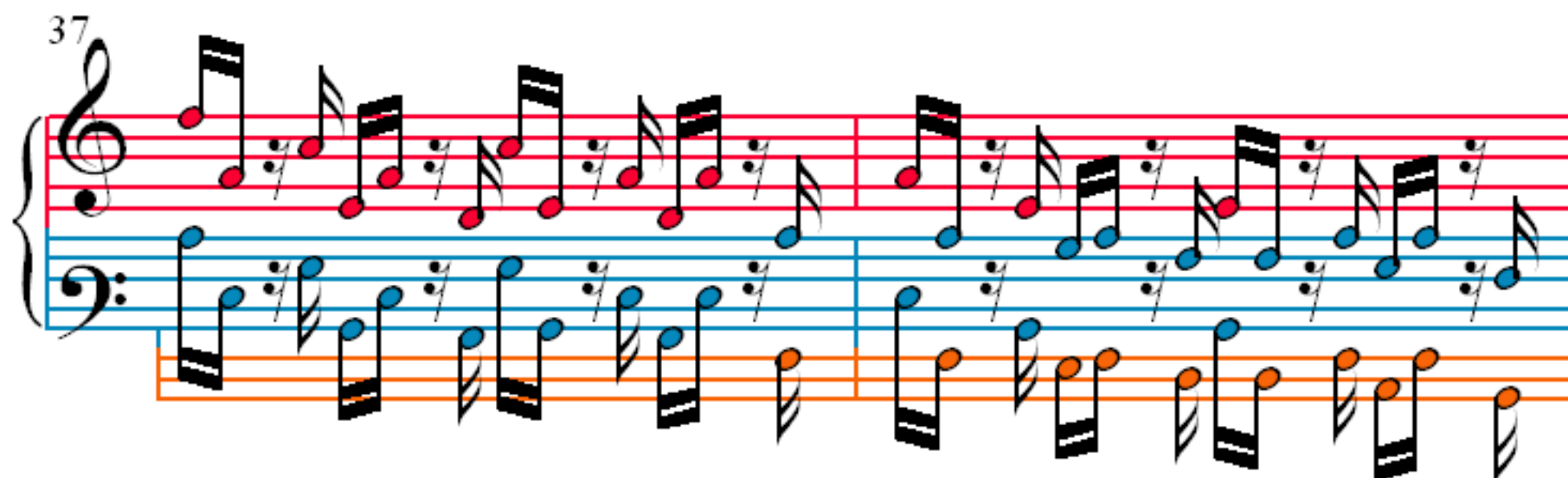
Measures 24, 25, and 26. Treble clef: eighth-note chords. Bass clef: eighth-note chords. A third staff below: eighth-note chords.

Measures 27-28 of a piano sonata. The notation is for a grand staff (treble and bass clefs). The key signature has two flats (B-flat and E-flat). The time signature is 3/4. The melody in the right hand consists of eighth and sixteenth notes, with some measures containing triplets. The left hand provides a steady accompaniment of eighth notes. A third staff, colored orange, shows a detailed view of the bass line for measures 27-28.

Measures 29-30 of a piano sonata. The notation continues from the previous system. The right hand melody features a sequence of eighth and sixteenth notes. The left hand accompaniment remains consistent. An orange staff provides a detailed view of the bass line for measures 29-30.

Measures 31-32 of a piano sonata. The notation continues. The right hand melody shows a continuation of the eighth and sixteenth note patterns. The left hand accompaniment is steady. An orange staff provides a detailed view of the bass line for measures 31-32.

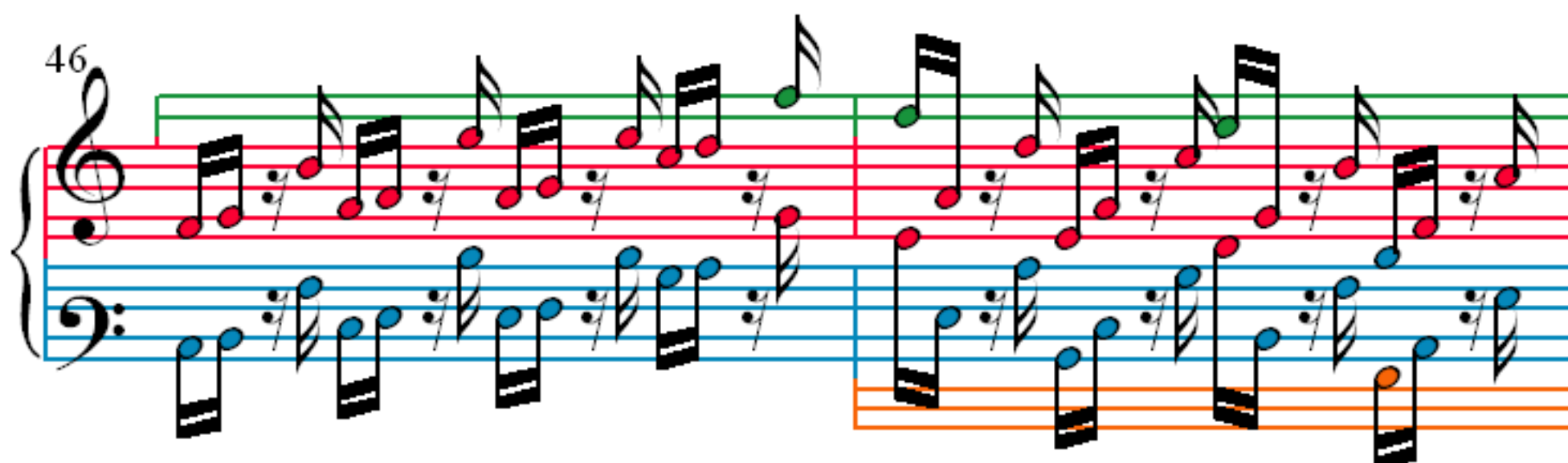
Measures 33-34 of a piano sonata. The notation continues. The right hand melody features a sequence of eighth and sixteenth notes. The left hand accompaniment remains consistent. An orange staff provides a detailed view of the bass line for measures 33-34.



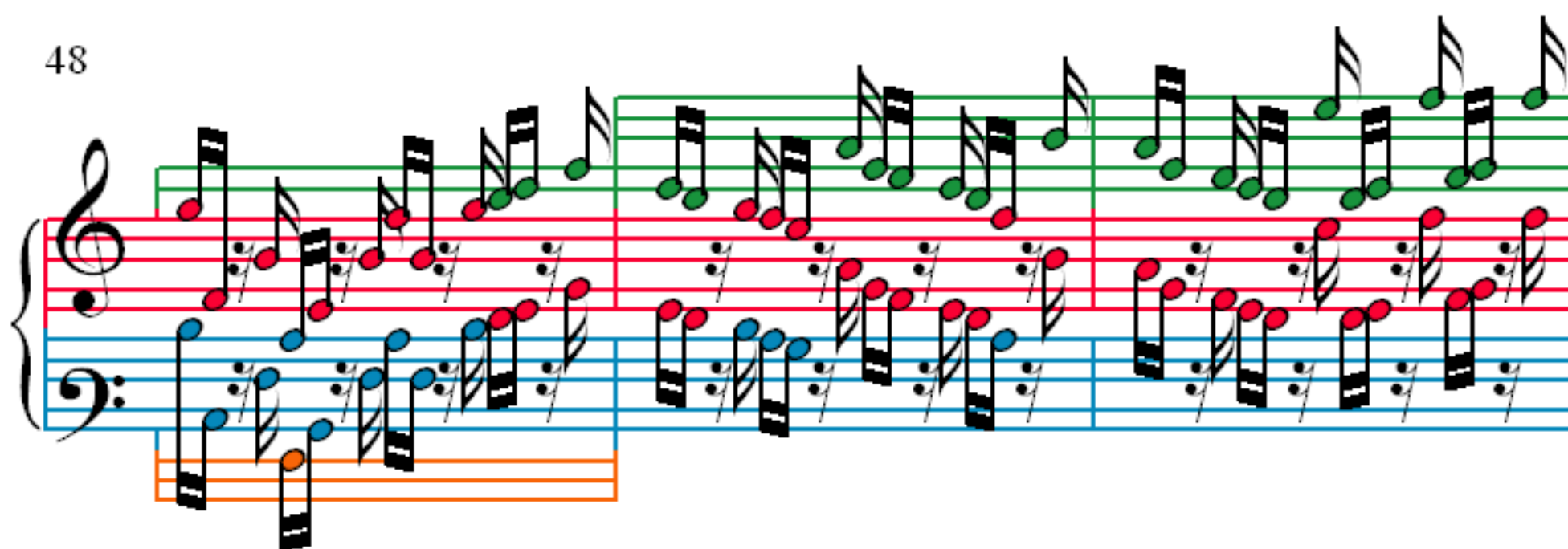
44



46



48



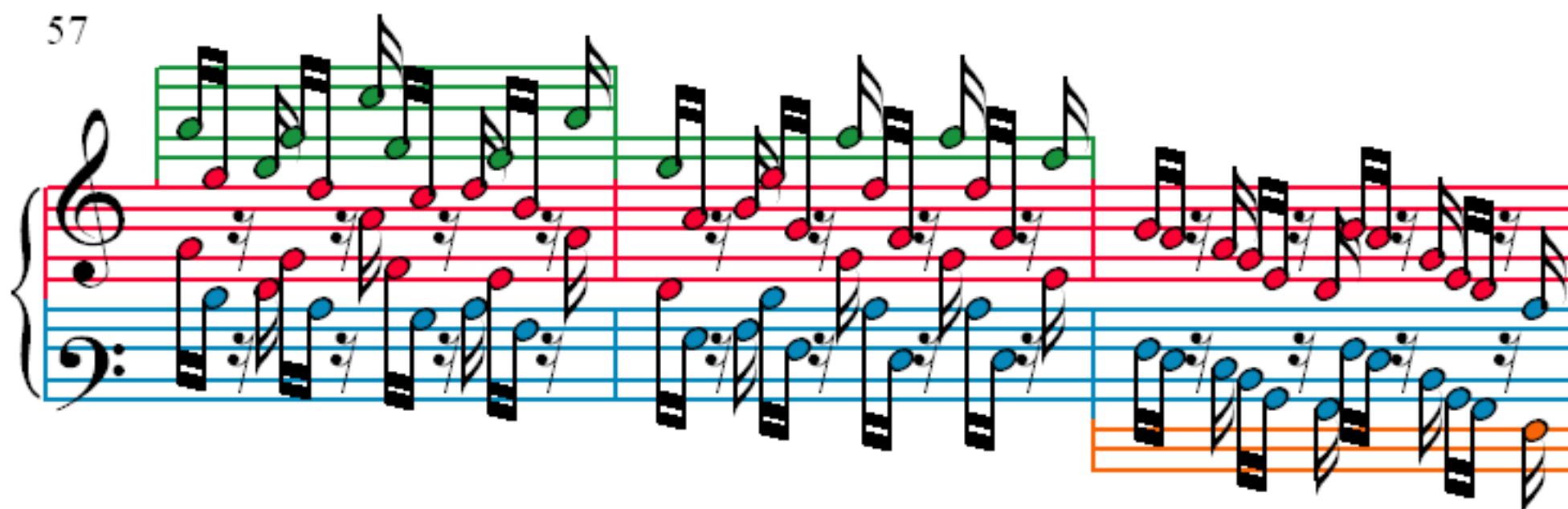
51



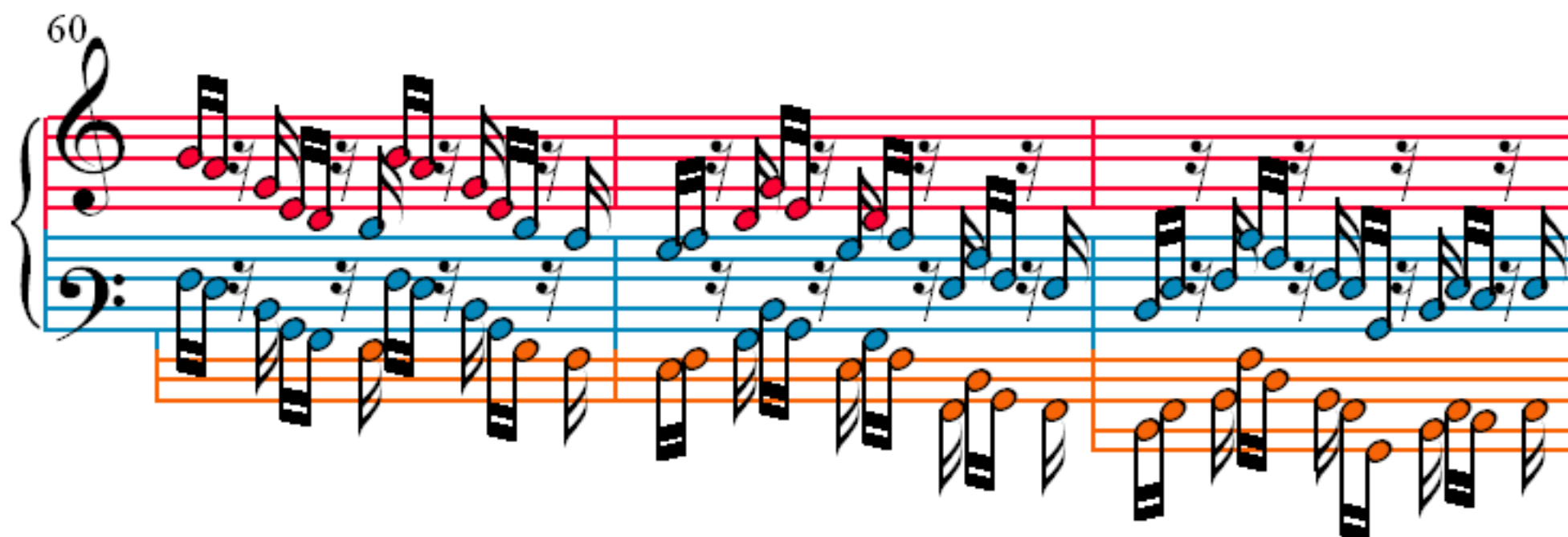
54



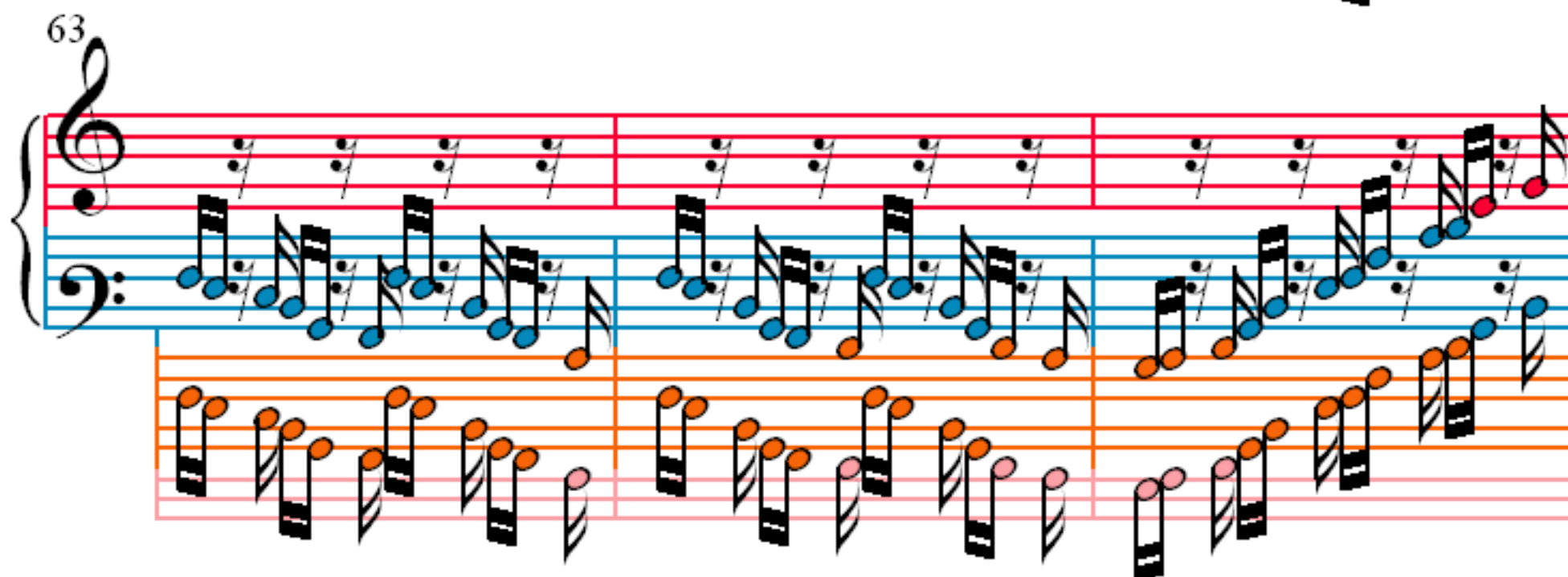
57



60



63



66

69

72

75