

# Sonata No. 27 2nd Movement

Nicht zu geschwind Op. 90

L. V. Beethoven (1770–1827)

1

Measures 1-3 of the 2nd movement. The music is in 2/4 time, D major. The right hand features a series of eighth-note chords, while the left hand plays a simple bass line. The notes are color-coded: red for the right hand and blue for the left hand. The first measure is marked with a '1'.

4

Measures 4-6 of the 2nd movement. The right hand continues with eighth-note chords, and the left hand plays a bass line. The notes are color-coded: red for the right hand and blue for the left hand. The fourth measure is marked with a '4'.

7

Measures 7-9 of the 2nd movement. The right hand continues with eighth-note chords, and the left hand plays a bass line. The notes are color-coded: red for the right hand and blue for the left hand. The seventh measure is marked with a '7'.

The image displays a musical score for the 2nd Movement of Sonata No. 27. The score is presented in three systems, each consisting of a treble and bass staff. The measures are numbered 10, 13, 16, and 19. The notation includes various musical symbols such as notes, rests, and slurs. Some notes are highlighted in different colors: green, red, blue, orange, and purple. The score is written in a standard musical notation format, with a key signature of one flat and a time signature of 4/4.

22

25

29

32

35

Measures 35-37. Treble clef: Chords with red and pink dots. Bass clef: Blue line with blue and orange dots. A green box highlights measures 35-36.

38

Measures 38-40. Treble clef: Chords with red and pink dots. Bass clef: Blue line with blue and orange dots. A green box highlights measures 38-39.

41

Measures 41-43. Treble clef: Chords with green and purple dots. Bass clef: Blue line with red dots. A green box highlights measures 41-42.

44

Measures 44-46. Treble clef: Chords with green and purple dots. Bass clef: Blue line with red dots. A green box highlights measures 44-45.

47

Measures 47-49 of the musical score. Measure 47 features a treble clef with a half note G4 and a half note A4, and a bass clef with a half note F3 and a half note G3. Measure 48 features a treble clef with a half note B4 and a half note C5, and a bass clef with a half note A2 and a half note B2. Measure 49 features a treble clef with a half note D5 and a half note E5, and a bass clef with a half note C3 and a half note D3.

50

Measures 50-52 of the musical score. Measure 50 features a treble clef with a half note F5 and a half note G5, and a bass clef with a half note E3 and a half note F3. Measure 51 features a treble clef with a half note A5 and a half note B5, and a bass clef with a half note G3 and a half note A3. Measure 52 features a treble clef with a half note C6 and a half note D6, and a bass clef with a half note B3 and a half note C4.

53

Measures 53-55 of the musical score. Measure 53 features a treble clef with a half note E6 and a half note F6, and a bass clef with a half note D4 and a half note E4. Measure 54 features a treble clef with a half note G6 and a half note A6, and a bass clef with a half note F4 and a half note G4. Measure 55 features a treble clef with a half note B6 and a half note C7, and a bass clef with a half note A4 and a half note B4.

56

Measures 56-58 of the musical score. Measure 56 features a treble clef with a half note D7 and a half note E7, and a bass clef with a half note C5 and a half note D5. Measure 57 features a treble clef with a half note F7 and a half note G7, and a bass clef with a half note E5 and a half note F5. Measure 58 features a treble clef with a half note A7 and a half note B7, and a bass clef with a half note G5 and a half note A5.

59

62

65

68

71

Measures 71-73. Treble clef: Measure 71 has two eighth-note chords (F4-A4, G4-B4). Measure 72 has two eighth-note chords (G4-B4, A4-C5). Measure 73 has a half-note chord (F4-A4) and a quarter note (G4). Bass clef: Measure 71 has two eighth-note chords (F3-A3, G3-B3). Measure 72 has two eighth-note chords (G3-B3, A3-C4). Measure 73 has two eighth-note chords (F3-A3, G3-B3). A third system of empty staves is shown below.

74

Measures 74-76. Treble clef: Measure 74 has a half-note chord (F4-A4) and a quarter note (G4). Measure 75 has two eighth-note chords (G4-B4, A4-C5). Measure 76 has two eighth-note chords (F4-A4, G4-B4). Bass clef: Measure 74 has two eighth-note chords (F3-A3, G3-B3). Measure 75 has two eighth-note chords (G3-B3, A3-C4). Measure 76 has two eighth-note chords (F3-A3, G3-B3). A third system of empty staves is shown below.

77

Measures 77-79. Treble clef: Measure 77 has a half-note chord (F4-A4) and a quarter note (G4). Measure 78 has two eighth-note chords (G4-B4, A4-C5). Measure 79 has a half-note chord (F4-A4) and a quarter note (G4). Bass clef: Measure 77 has two eighth-note chords (F3-A3, G3-B3). Measure 78 has two eighth-note chords (G3-B3, A3-C4). Measure 79 has two eighth-note chords (F3-A3, G3-B3). A third system of empty staves is shown below.

80

Measures 80-82. Treble clef: Measure 80 has a half-note chord (F4-A4) and a quarter note (G4). Measure 81 has two eighth-note chords (G4-B4, A4-C5). Measure 82 has two eighth-note chords (F4-A4, G4-B4). Bass clef: Measure 80 has two eighth-note chords (F3-A3, G3-B3). Measure 81 has two eighth-note chords (G3-B3, A3-C4). Measure 82 has two eighth-note chords (F3-A3, G3-B3). A third system of empty staves is shown below.

83

86

89

92

95

Measures 95-97 of the musical score. The system consists of three staves. The top staff (treble clef) has a green background. The middle staff (treble clef) has a red background. The bottom staff (bass clef) has a blue background. Measure 95 shows a treble staff with eighth notes and a bass staff with a whole note. Measure 96 shows a treble staff with eighth notes and a bass staff with a whole note. Measure 97 shows a treble staff with eighth notes and a bass staff with a whole note. There are additional staves below the main system, some with orange and pink backgrounds, containing single notes.

98

Measures 98-100 of the musical score. The system consists of three staves. The top staff (treble clef) has a green background. The middle staff (treble clef) has a red background. The bottom staff (bass clef) has a blue background. Measure 98 shows a treble staff with eighth notes and a bass staff with a whole note. Measure 99 shows a treble staff with eighth notes and a bass staff with a whole note. Measure 100 shows a treble staff with eighth notes and a bass staff with a whole note.

101

Measures 101-103 of the musical score. The system consists of three staves. The top staff (treble clef) has a green background. The middle staff (treble clef) has a red background. The bottom staff (bass clef) has a blue background. Measure 101 shows a treble staff with eighth notes and a bass staff with a whole note. Measure 102 shows a treble staff with eighth notes and a bass staff with a whole note. Measure 103 shows a treble staff with eighth notes and a bass staff with a whole note. There are additional staves below the main system, some with orange and pink backgrounds, containing single notes.

104

Measures 104-106 of the musical score. The system consists of three staves. The top staff (treble clef) has a green background. The middle staff (treble clef) has a red background. The bottom staff (bass clef) has a blue background. Measure 104 shows a treble staff with eighth notes and a bass staff with a whole note. Measure 105 shows a treble staff with eighth notes and a bass staff with a whole note. Measure 106 shows a treble staff with eighth notes and a bass staff with a whole note. There are additional staves below the main system, some with orange and pink backgrounds, containing single notes.

107

Measures 107-110 of the musical score. The right hand (treble clef) features a series of ascending eighth notes, with a circled chord in measure 109. The left hand (bass clef) features a series of ascending eighth notes, with a circled chord in measure 109. The score is color-coded with green, red, blue, and orange lines.

111

Measures 111-113 of the musical score. The right hand (treble clef) features a series of ascending eighth notes, with a circled chord in measure 112. The left hand (bass clef) features a series of ascending eighth notes, with a circled chord in measure 112. The score is color-coded with green, red, blue, and orange lines.

114

Measures 114-115 of the musical score. The right hand (treble clef) features a series of ascending eighth notes, with a circled chord in measure 114. The left hand (bass clef) features a series of ascending eighth notes, with a circled chord in measure 114. The score is color-coded with green, red, blue, and orange lines.

116

Measures 116-119 of the musical score. The right hand (treble clef) features a series of ascending eighth notes, with a circled chord in measure 116. The left hand (bass clef) features a series of ascending eighth notes, with a circled chord in measure 116. The score is color-coded with green, red, blue, and orange lines.

118

121

124

127

130

134

137

140

143

Measures 143-145 of a musical score. The system consists of three staves: a treble staff (top), a bass staff (middle), and a lower staff (bottom). The treble staff has a green line and a red line. The bass staff has a blue line and a red line. The lower staff has an orange line and a pink line. The notation includes various notes, rests, and slurs. In measure 143, there is a slur over a group of notes in the treble staff. In measure 144, there is a slur over a group of notes in the treble staff. In measure 145, there is a slur over a group of notes in the treble staff.

146

Measures 146-148 of a musical score. The system consists of three staves: a treble staff (top), a bass staff (middle), and a lower staff (bottom). The treble staff has a green line and a red line. The bass staff has a blue line and a red line. The lower staff has an orange line and a pink line. The notation includes various notes, rests, and slurs. In measure 146, there is a slur over a group of notes in the treble staff. In measure 147, there is a slur over a group of notes in the treble staff. In measure 148, there is a slur over a group of notes in the treble staff.

149

Measures 149-151 of a musical score. The system consists of three staves: a treble staff (top), a bass staff (middle), and a lower staff (bottom). The treble staff has a green line and a red line. The bass staff has a blue line and a red line. The lower staff has an orange line and a pink line. The notation includes various notes, rests, and slurs. In measure 149, there is a slur over a group of notes in the treble staff. In measure 150, there is a slur over a group of notes in the treble staff. In measure 151, there is a slur over a group of notes in the treble staff.

152

Measures 152-154 of a musical score. The system consists of three staves: a treble staff (top), a bass staff (middle), and a lower staff (bottom). The treble staff has a green line and a red line. The bass staff has a blue line and a red line. The lower staff has an orange line and a pink line. The notation includes various notes, rests, and slurs. In measure 152, there is a slur over a group of notes in the treble staff. In measure 153, there is a slur over a group of notes in the treble staff. In measure 154, there is a slur over a group of notes in the treble staff.

155

Measures 155-158 of the musical score. The system consists of two staves. The upper staff is a treble clef with a red line, and the lower staff is a bass clef with a blue line. The music is written in a key with one flat (B-flat). The notes are color-coded: red for the upper staff and blue for the lower staff. The first measure (155) shows a treble staff with a quarter note G4 and a bass staff with a quarter note F4. The second measure (156) shows a treble staff with a quarter note A4 and a bass staff with a quarter note G4. The third measure (157) shows a treble staff with a quarter note B4 and a bass staff with a quarter note A4. The fourth measure (158) shows a treble staff with a quarter note C5 and a bass staff with a quarter note B4. The notes are connected by a slur, indicating a melodic line.

159

Measures 159-162 of the musical score. The system consists of two staves. The upper staff is a treble clef with a red line, and the lower staff is a bass clef with a blue line. The music is written in a key with one flat (B-flat). The notes are color-coded: red for the upper staff and blue for the lower staff. The first measure (159) shows a treble staff with a quarter note G4 and a bass staff with a quarter note F4. The second measure (160) shows a treble staff with a quarter note A4 and a bass staff with a quarter note G4. The third measure (161) shows a treble staff with a quarter note B4 and a bass staff with a quarter note A4. The fourth measure (162) shows a treble staff with a quarter note C5 and a bass staff with a quarter note B4. The notes are connected by a slur, indicating a melodic line.

163

Measures 163-166 of the musical score. The system consists of two staves. The upper staff is a treble clef with a red line, and the lower staff is a bass clef with a blue line. The music is written in a key with one flat (B-flat). The notes are color-coded: red for the upper staff and blue for the lower staff. The first measure (163) shows a treble staff with a quarter note G4 and a bass staff with a quarter note F4. The second measure (164) shows a treble staff with a quarter note A4 and a bass staff with a quarter note G4. The third measure (165) shows a treble staff with a quarter note B4 and a bass staff with a quarter note A4. The fourth measure (166) shows a treble staff with a quarter note C5 and a bass staff with a quarter note B4. The notes are connected by a slur, indicating a melodic line.

167

170

173

176

Measures 179-181 of the musical score. Measure 179 features a treble clef with a half note G4 (circled in grey) and a bass clef with a half note F3 (circled in grey). Measure 180 shows a treble clef with a half note G4 and a bass clef with a half note F3. Measure 181 shows a treble clef with a half note G4 and a bass clef with a half note F3. The notation is color-coded: red for the treble clef, blue for the bass clef, and green for the notes.

Measures 182-184 of the musical score. Measure 182 features a treble clef with a half note G4 (circled in grey) and a bass clef with a half note F3 (circled in grey). Measure 183 shows a treble clef with a half note G4 and a bass clef with a half note F3. Measure 184 shows a treble clef with a half note G4 and a bass clef with a half note F3. The notation is color-coded: red for the treble clef, blue for the bass clef, and green for the notes.

Measures 185-187 of the musical score. Measure 185 features a treble clef with a half note G4 (circled in grey) and a bass clef with a half note F3 (circled in grey). Measure 186 shows a treble clef with a half note G4 and a bass clef with a half note F3. Measure 187 shows a treble clef with a half note G4 and a bass clef with a half note F3. The notation is color-coded: red for the treble clef, blue for the bass clef, and green for the notes.

Measures 188-190 of the musical score. Measure 188 features a treble clef with a half note G4 (circled in grey) and a bass clef with a half note F3 (circled in grey). Measure 189 shows a treble clef with a half note G4 and a bass clef with a half note F3. Measure 190 shows a treble clef with a half note G4 and a bass clef with a half note F3. The notation is color-coded: red for the treble clef, blue for the bass clef, and green for the notes.

191

Measures 191-193. Treble staff: eighth-note chords. Bass staff: eighth-note chords. Purple highlight over measures 192-193.

194

Measures 194-196. Treble staff: eighth-note chords. Bass staff: eighth-note chords. Red highlight over measures 194-195.

197

Measures 197-199. Treble staff: eighth-note chords. Bass staff: eighth-note chords. Purple highlight over measures 198-199.

200

Measures 200-202. Treble staff: eighth-note chords. Bass staff: eighth-note chords. Red highlight over measures 200-201.

203

206

209

212

215

218

221

224

227

Measures 227-229. Treble clef: green notes. Bass clef: blue notes. Measure 229 has an orange line in the bass.

230

Measures 230-232. Treble clef: red notes. Bass clef: blue notes. Measure 230 has a grey circle in the bass. Measure 232 has an orange line in the bass.

233

Measures 233-235. Treble clef: green notes. Bass clef: blue notes. Measure 233 has an orange line in the bass. Measure 235 has an orange line in the bass.

236

Measures 236-238. Treble clef: green notes. Bass clef: blue notes. Measure 236 has a purple line in the treble. Measure 238 has a grey circle in the bass.

239

242

245

248

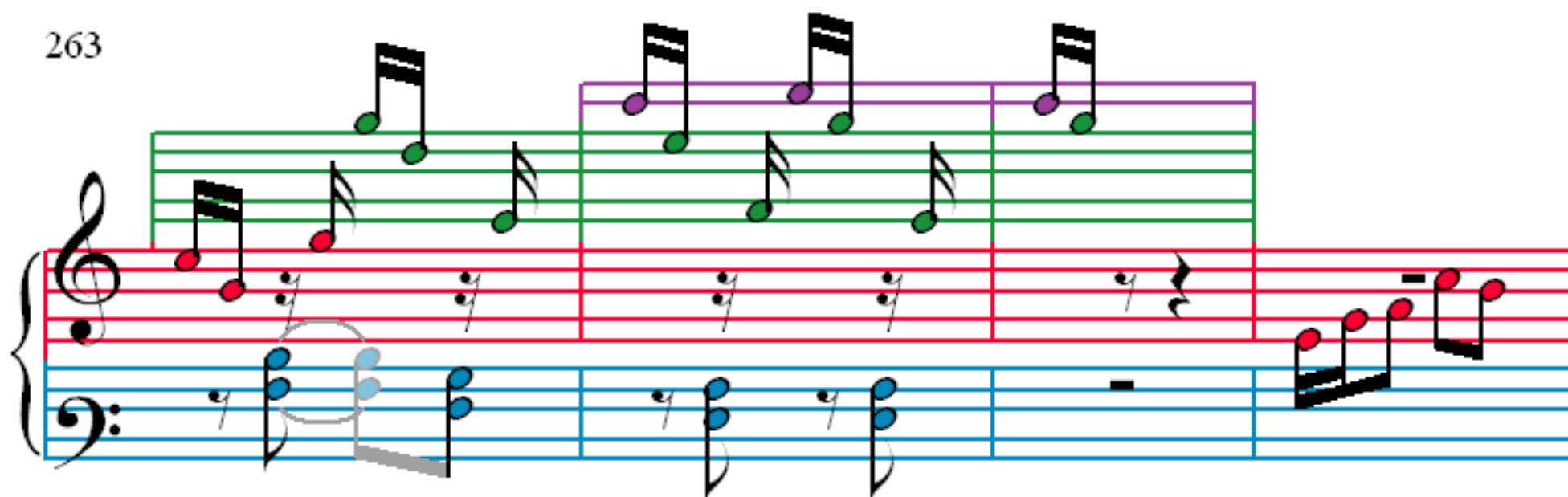
251

254

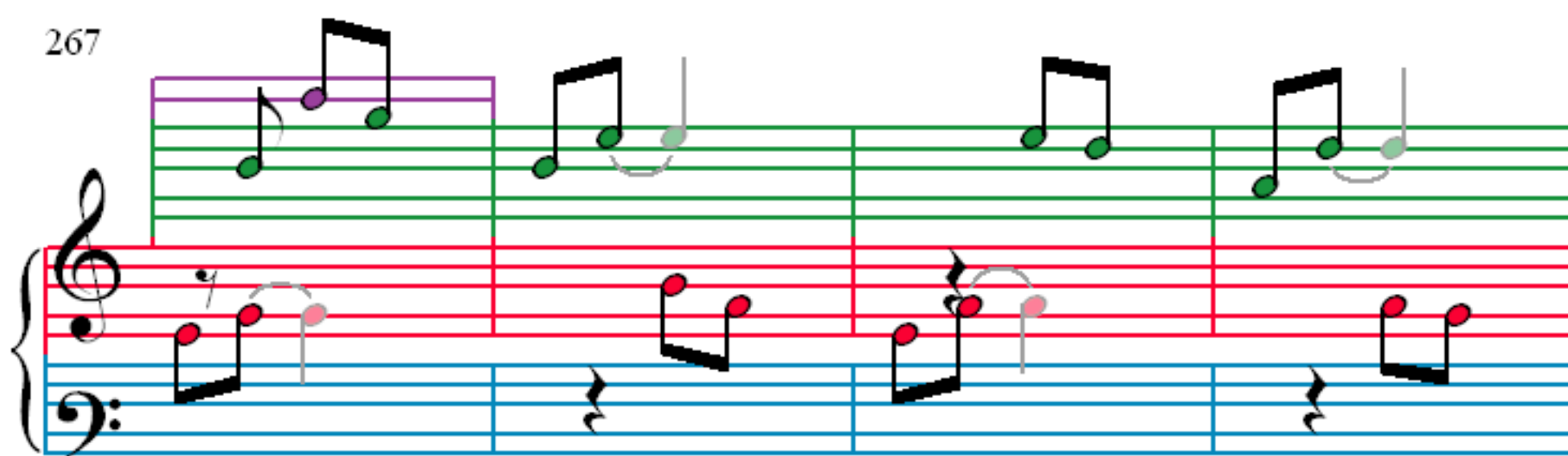
257

260

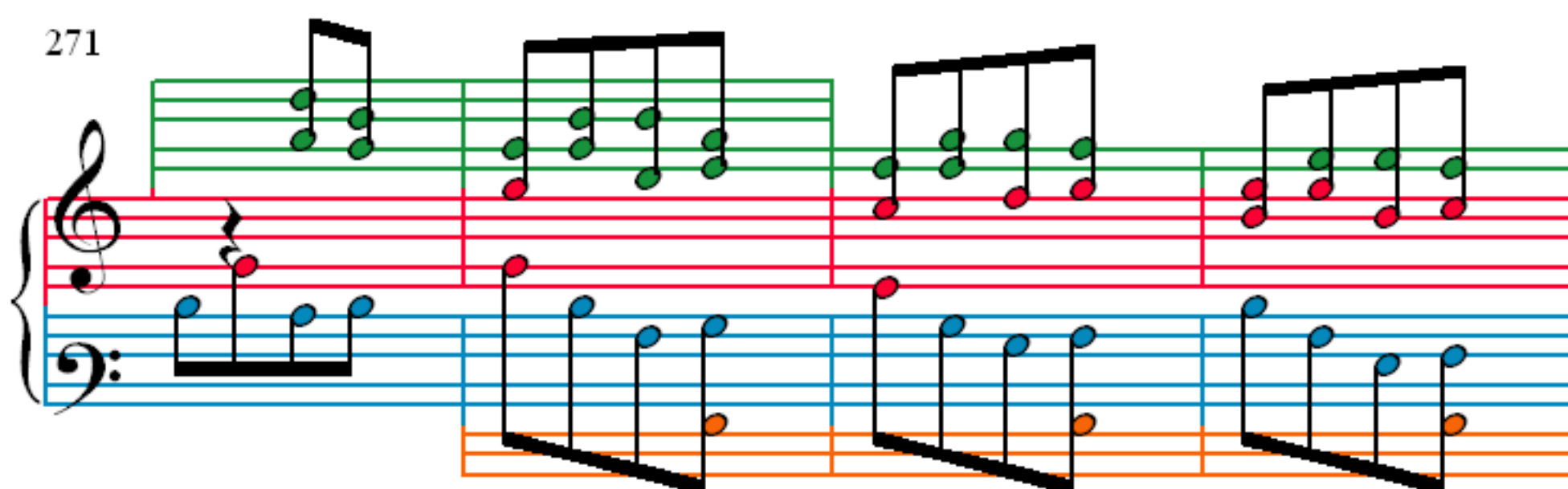
263



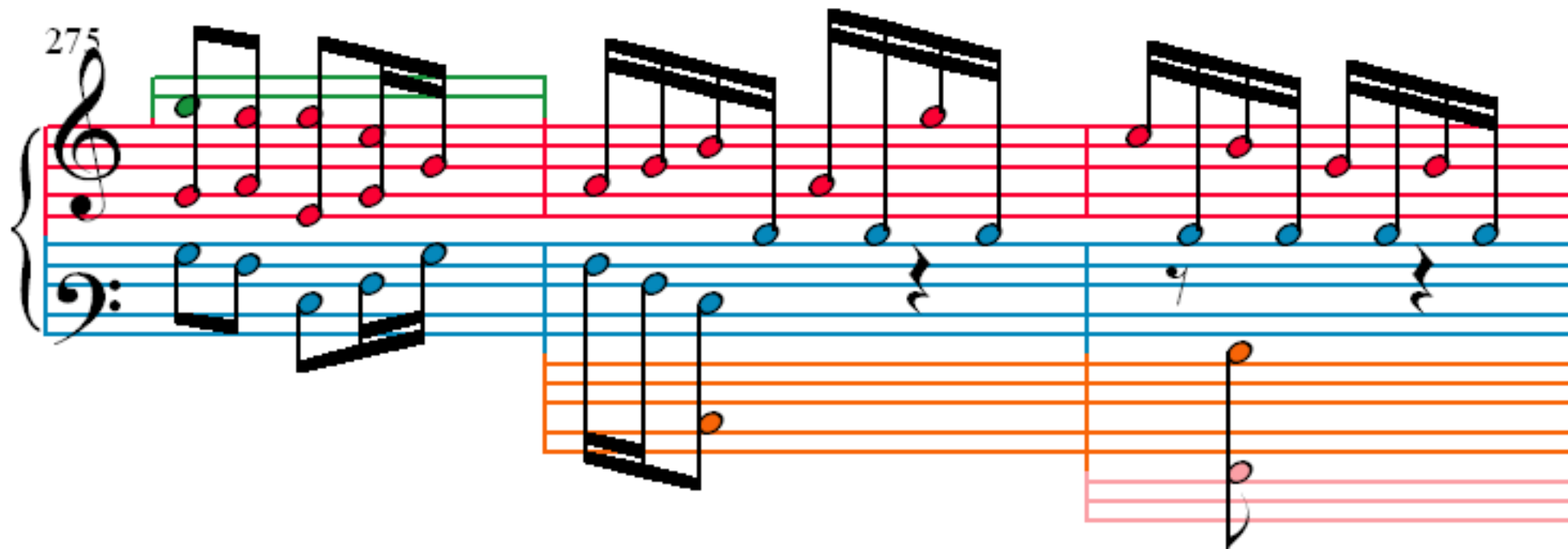
267



271



275



278

282

284

287