

Sonata No. 25 Op. 79

1st Movement: Presto alla tedesca

L. V. Beethoven (1770–1827)

1

Measures 1-3 of the first movement. The treble clef staff (red lines) contains a melody with green and purple notes. The bass clef staff (blue lines) contains a bass line with red and blue notes. A 3/4 time signature is indicated at the beginning of the first staff.

4

Measures 4-6 of the first movement. The treble clef staff (red lines) contains a melody with green and red notes. The bass clef staff (blue lines) contains a bass line with red and blue notes.

7


Measures 7-9 of the first movement. The treble clef staff (red lines) contains a melody with green and red notes. The bass clef staff (blue lines) contains a bass line with red and blue notes. An orange line is visible at the bottom of the staff in measure 9.

10

Measures 10-12 of the first movement. The treble clef staff (red lines) contains a melody with green and red notes. The bass clef staff (blue lines) contains a bass line with red and blue notes. An orange line is visible at the bottom of the staff in measure 10.

13

13



The musical score for Example 13 is presented in a four-measure format. The melody, written in the treble clef, features a sequence of notes: a quarter note (green), an eighth note (green), a quarter note (green), and a quarter note (green) in the first measure; a quarter note (green), an eighth note (green), a quarter note (green), and a quarter note (green) in the second measure; a quarter note (green), an eighth note (green), a quarter note (green), and a quarter note (green) in the third measure; and a quarter note (green), an eighth note (green), a quarter note (green), and a quarter note (green) in the fourth measure. The piano accompaniment, written in the bass clef, consists of whole notes: a red whole note in the first measure, a red whole note in the second measure, a red whole note in the third measure, and a blue whole note in the fourth measure. The notes are color-coded: green for the melody, red for the piano accompaniment, and blue for the piano accompaniment.

17

17

Musical score for Example 17, showing a piano accompaniment for a melody. The score is in 4/4 time and consists of four measures. The melody is written in the treble clef with a key signature of one flat (B-flat). The piano accompaniment is written in the bass clef. The melody starts on a whole note G4, followed by a half note F#4, a quarter note E4, and a quarter note D4. The piano accompaniment consists of a single bass note G3 in the first three measures, and a descending eighth-note scale (F#3, E3, D3, C3, B2) in the fourth measure.

21

[illegible]

24

24

The image shows a musical score for Example 10.10. It consists of three staves. The top staff is a vocal line with a green background, featuring a melody of eighth and quarter notes. The middle staff is a piano accompaniment with a red background, featuring a melody of eighth and quarter notes. The bottom staff is a piano accompaniment with a blue background, featuring a melody of eighth and quarter notes. The score is divided into three measures by vertical bar lines.

27

Measures 27-30: Treble clef contains green half notes (F4, G4, A4, B4) and red half notes (C5, B4, A4, G4). Bass clef contains blue eighth notes (F3, G3, A3, B3) and red eighth notes (C4, B3, A3, G3).

31

Measures 31-34: Treble clef contains green eighth notes (F4, G4, A4, B4, C5, B4, A4, G4) and red half notes (C5, B4, A4, G4). Bass clef contains blue eighth notes (F3, G3, A3, B3) and red half notes (C4, B3, A3, G3).

35

Measures 35-38: Treble clef contains green eighth notes (F4, G4, A4, B4, C5, B4, A4, G4) and purple eighth notes (F4, G4, A4, B4, C5, B4, A4, G4). Bass clef contains red half notes (C5, B4, A4, G4) and blue half notes (C4, B3, A3, G3).

39

Measures 39-42: Treble clef contains green eighth notes (F4, G4, A4, B4, C5, B4, A4, G4) and purple eighth notes (F4, G4, A4, B4, C5, B4, A4, G4). Bass clef contains red half notes (C5, B4, A4, G4) and blue half notes (C4, B3, A3, G3).

43

Measures 43-46. Treble clef: Purple box over measures 43-44, green notes. Bass clef: Blue notes. Red lines are present in both staves.

47

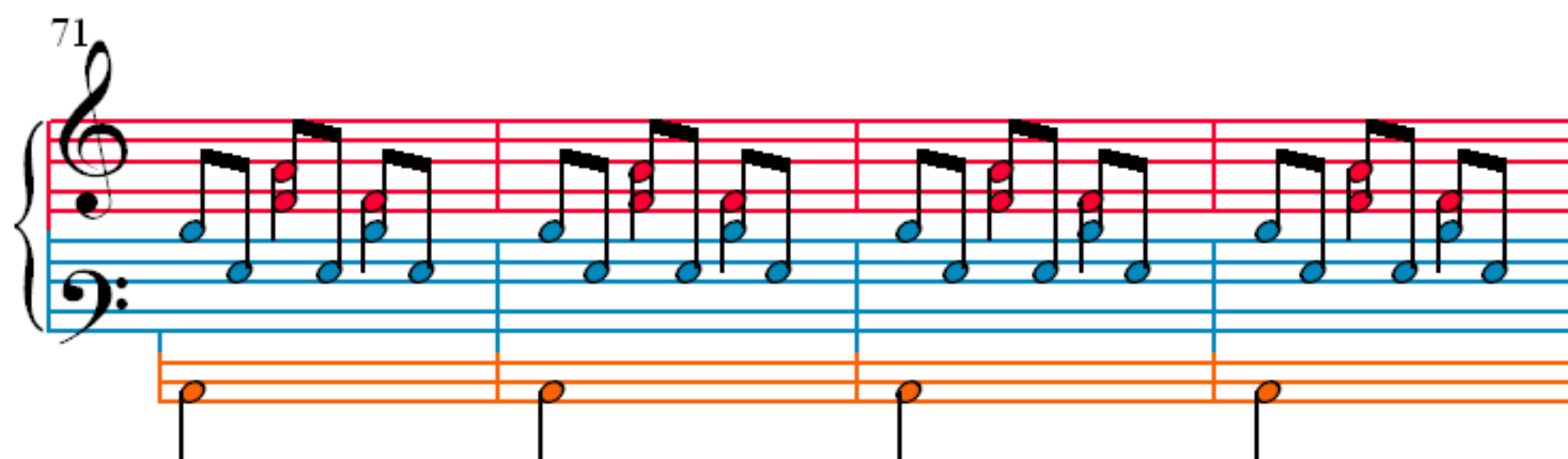
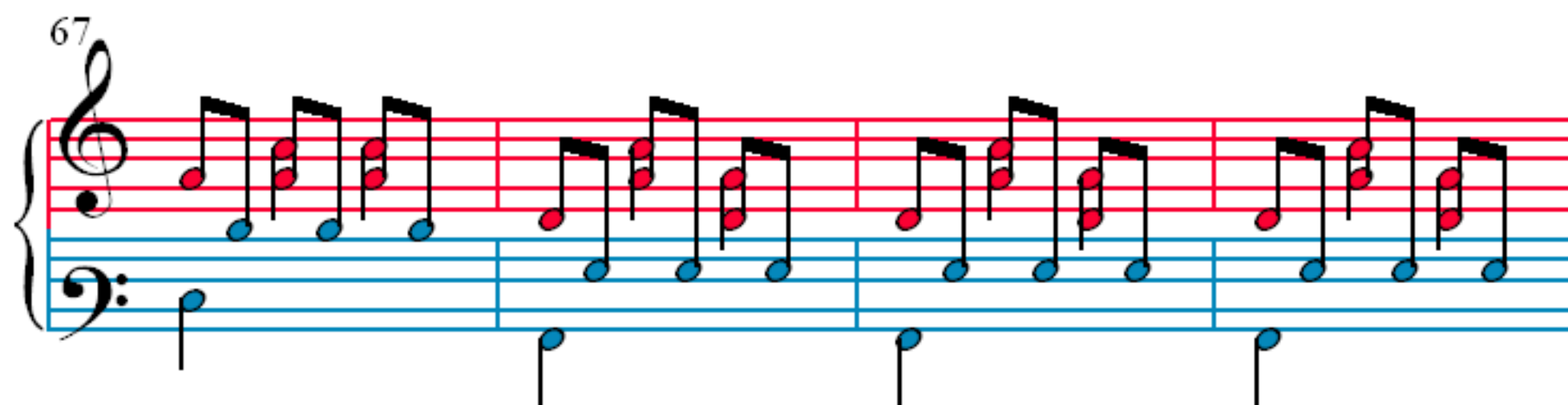
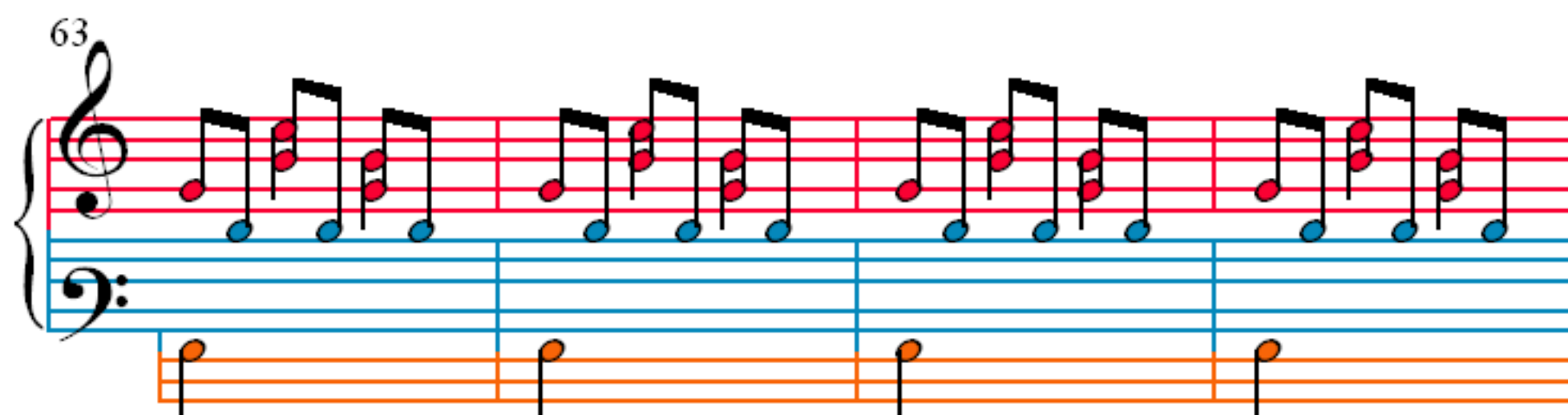
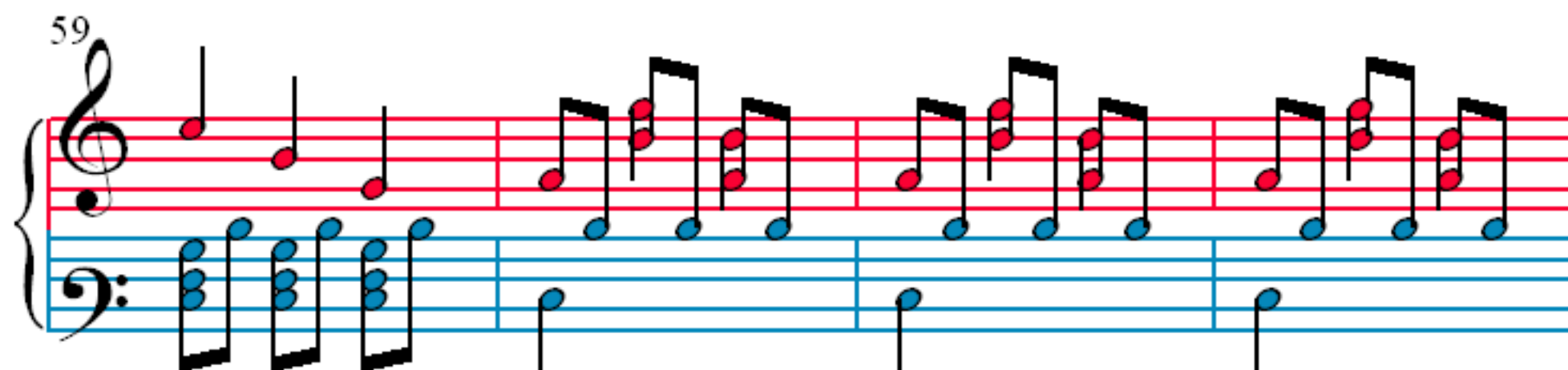
Measures 47-50. Treble clef: Green notes. Bass clef: Blue notes and an orange line with orange notes in measures 48-50. Red lines are present in both staves.

51

Measures 51-54. Treble clef: Green notes. Bass clef: Blue notes and an orange line with orange notes in measures 51-52. Red lines are present in both staves.

55

Measures 55-58. Treble clef: Green notes. Bass clef: Blue notes. Red lines are present in both staves.



75

Measures 75-78. The system consists of a grand staff (treble and bass clefs) and a separate orange staff. The treble staff has red notes, and the bass staff has blue notes. The orange staff has orange notes. The notation includes eighth and sixteenth notes, and rests.

79

Measures 79-82. The system consists of a grand staff (treble and bass clefs) and a separate orange staff. The treble staff has red notes, and the bass staff has blue notes. The orange staff has orange notes. The notation includes eighth and sixteenth notes, and rests.

83

Measures 83-85. The system consists of a grand staff (treble and bass clefs). The treble staff has red notes, and the bass staff has blue notes. The notation includes eighth and sixteenth notes, and rests.

86

Measures 86-88. The system consists of a grand staff (treble and bass clefs) and a separate orange staff. The treble staff has red notes, and the bass staff has blue notes. The orange staff has orange notes. The notation includes eighth and sixteenth notes, and rests.

89

Measures 89-92: Treble clef contains a continuous eighth-note melody. The notes alternate between red and blue. The bass clef contains a simple accompaniment with blue notes. A third staff below the bass clef shows orange notes.

93

Measures 93-96: Treble clef contains a continuous eighth-note melody. The notes alternate between red and blue. The bass clef contains a simple accompaniment with blue notes. A third staff below the bass clef shows orange notes.

97

Measures 97-100: Treble clef contains a continuous eighth-note melody. The notes alternate between red and blue. The bass clef contains a simple accompaniment with blue notes. A third staff below the bass clef shows orange notes.

101

Measures 101-104: Treble clef contains a continuous eighth-note melody. The notes alternate between red and blue. The bass clef contains a simple accompaniment with blue notes. A third staff below the bass clef shows orange notes.

105

109

113

117

121

Measures 121-124. Treble clef: Measure 121 has a green line with eighth notes. Measure 122 has a green line with eighth notes. Measure 123 has a green line with eighth notes. Measure 124 has a green line with quarter notes. Bass clef: Measure 121 has a blue line with blue notes. Measure 122 has a blue line with blue notes. Measure 123 has a blue line with blue notes. Measure 124 has a blue line with blue notes. An orange line is present below the bass clef with orange notes.

125

Measures 125-128. Treble clef: Measure 125 has a purple line with quarter notes. Measure 126 has a green line with eighth notes. Measure 127 has a green line with eighth notes. Measure 128 has a green line with eighth notes. Bass clef: Measure 125 has a blue line with blue notes. Measure 126 has a blue line with blue notes. Measure 127 has a blue line with blue notes. Measure 128 has a blue line with blue notes.

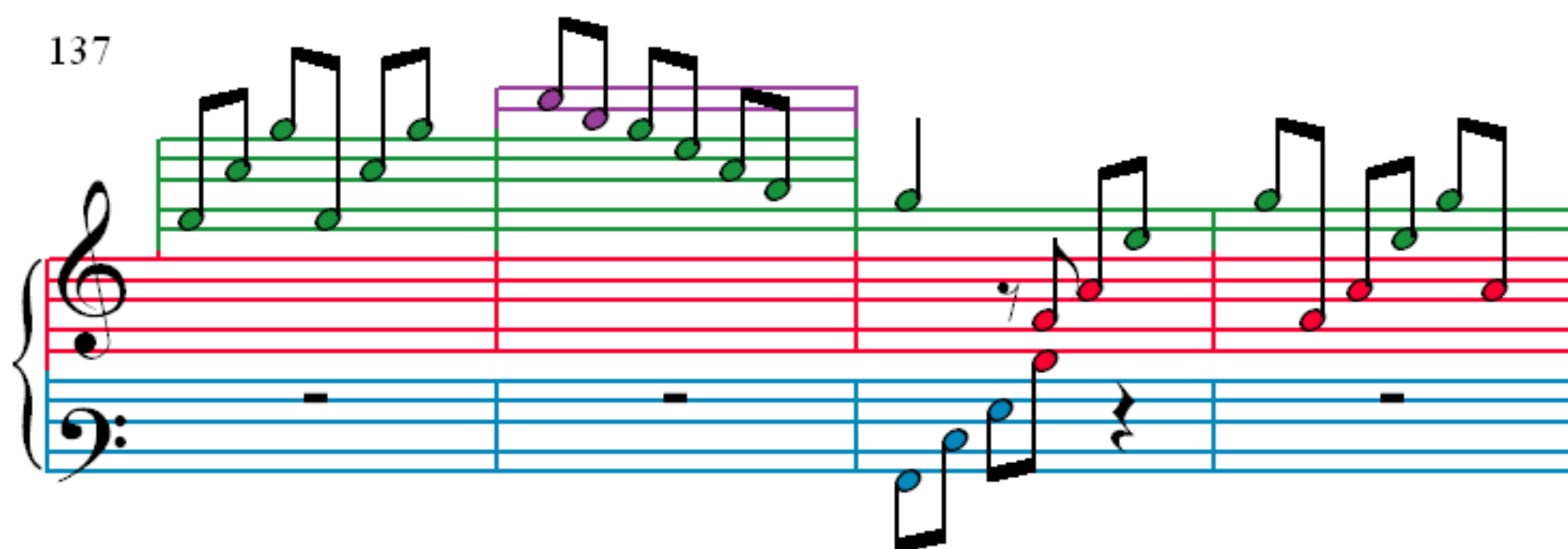
129

Measures 129-132. Treble clef: Measure 129 has a green line with quarter notes. Measure 130 has a green line with quarter notes. Measure 131 has a green line with quarter notes. Measure 132 has a green line with eighth notes. Bass clef: Measure 129 has a blue line with blue notes. Measure 130 has a blue line with blue notes. Measure 131 has a blue line with blue notes. Measure 132 has a blue line with blue notes.

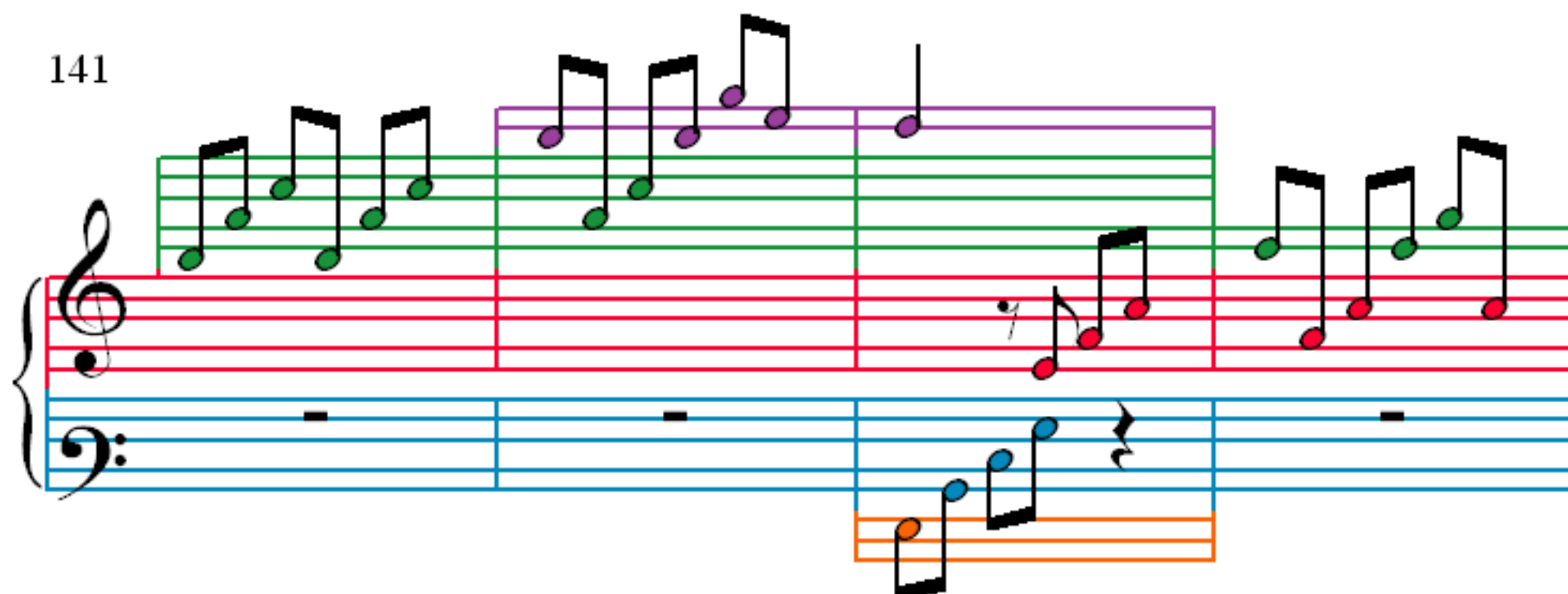
133

Measures 133-136. Treble clef: Measure 133 has a green line with quarter notes. Measure 134 has a green line with quarter notes. Measure 135 has a green line with quarter notes. Measure 136 has a green line with eighth notes. Bass clef: Measure 133 has a blue line with blue notes. Measure 134 has a blue line with blue notes. Measure 135 has a blue line with blue notes. Measure 136 has a blue line with blue notes.

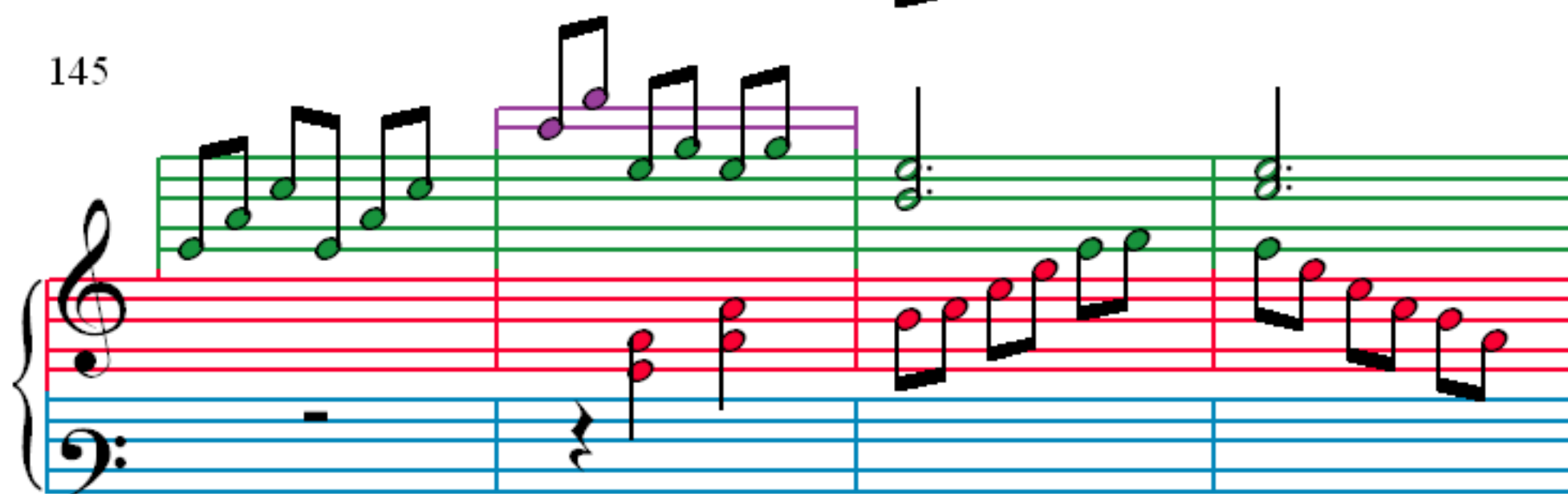
137



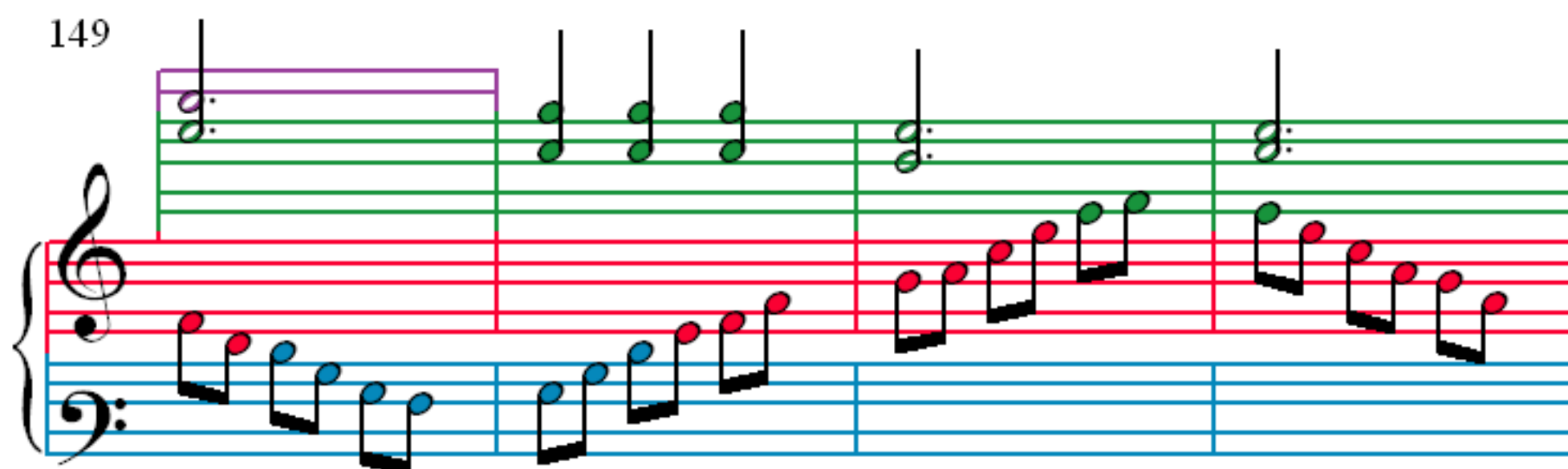
141



145



149



153

Measures 153-156. The right hand (treble clef) has a purple box around measures 153-154 and a green box around measures 155-156. The left hand (bass clef) has a red box around measures 153-154 and a blue box around measures 155-156. Notes are colored: purple, green, red, and blue.

157

Measures 157-160. The right hand (treble clef) has a purple box around measures 157-158 and a green box around measures 159-160. The left hand (bass clef) has a red box around measures 157-158 and a blue box around measures 159-160. Notes are colored: purple, green, red, and blue.

161

Measures 161-164. The right hand (treble clef) has a purple box around measures 161-162 and a green box around measures 163-164. The left hand (bass clef) has a red box around measures 161-162 and a blue box around measures 163-164. Notes are colored: purple, green, red, and blue.

165

Measures 165-168. The right hand (treble clef) has a purple box around measures 165-166 and a green box around measures 167-168. The left hand (bass clef) has a red box around measures 165-166 and a blue box around measures 167-168. Notes are colored: purple, green, red, and blue.

169

173

177

180

183

Measures 183-185. Treble clef: measures 183-184 have red notes (F4, G4, A4, B4, C5, D5, E5, F5) and measure 185 has green notes (F5, E5, D5, C5). Bass clef: measures 183-184 have blue notes (F3, G3, A3, B3, C4, D4, E4, F4) and measure 185 has blue notes (F4, E4, D4, C4). An orange staff below the bass clef contains orange notes (F3, G3, A3, B3, C4, D4, E4, F4) in measures 183-184 and (F4, E4, D4, C4) in measure 185.

186

Measures 186-188. Treble clef: measure 186 has green notes (F5, E5, D5, C5), measure 187 has red notes (B4, A4, G4, F4), and measure 188 has red notes (E4, D4, C4, B3). Bass clef: measures 186-188 have blue notes (F4, E4, D4, C4, B3, A3, G3, F3).

189

Measures 189-191. Treble clef: measures 189-190 have green notes (F5, E5, D5, C5, B4, A4, G4, F4) and measure 191 has red notes (E4, D4, C4, B3). Bass clef: measures 189-191 have blue notes (F4, E4, D4, C4, B3, A3, G3, F3).

192

Measures 192-194. Treble clef: measures 192-193 have green notes (F5, E5, D5, C5, B4, A4, G4, F4) and measure 194 has purple notes (F5, E5, D5, C5). Bass clef: measures 192-194 have blue notes (F4, E4, D4, C4, B3, A3, G3, F3).

195

198

201

204