

# Sonata No. 24 Op. 78

## 2nd Movement: Allegro vivace

L. V. Beethoven (1770–1827)

1

3

7

11

14

17

20

23

Measures 23-26 of the musical score. The treble clef staff contains a melodic line with eighth and sixteenth notes, highlighted with green and purple boxes. The bass clef staff contains a simple accompaniment of eighth notes, highlighted with blue boxes.

27

Measures 27-30 of the musical score. The treble clef staff contains a melodic line with eighth and sixteenth notes, highlighted with green and red boxes. The bass clef staff contains a simple accompaniment of eighth notes, highlighted with blue boxes.

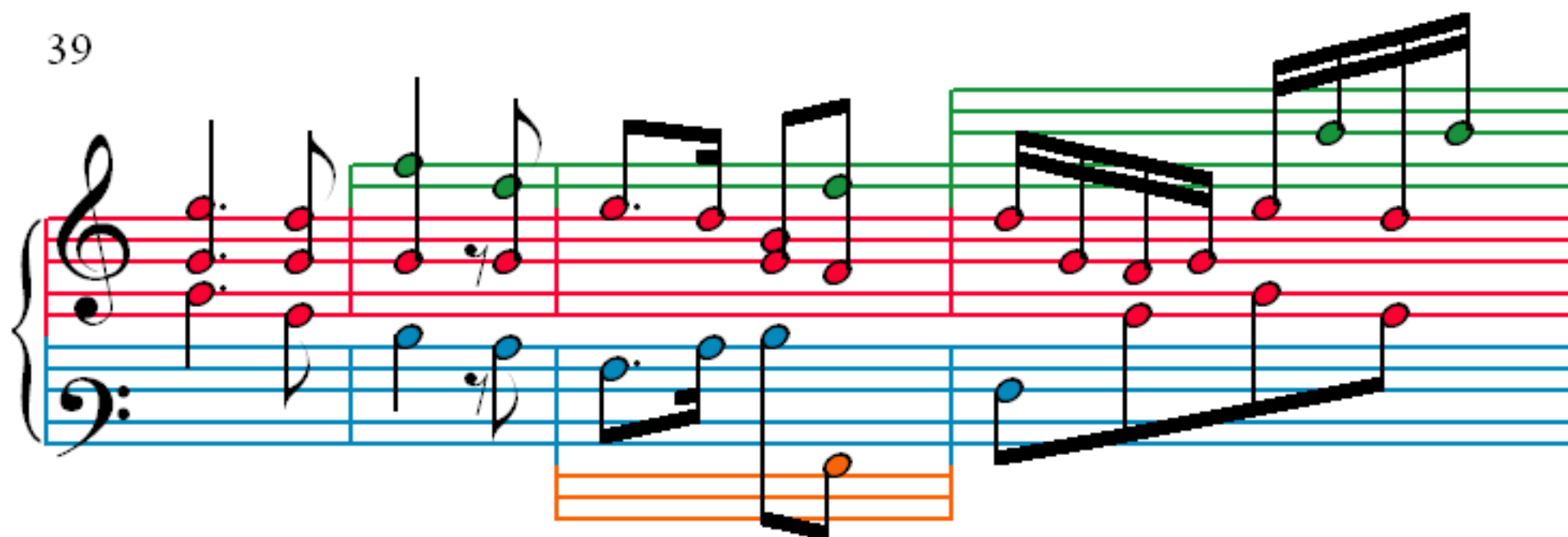
31

Measures 31-34 of the musical score. The treble clef staff contains a melodic line with eighth and sixteenth notes, highlighted with green and red boxes. The bass clef staff contains a simple accompaniment of eighth notes, highlighted with blue and orange boxes.

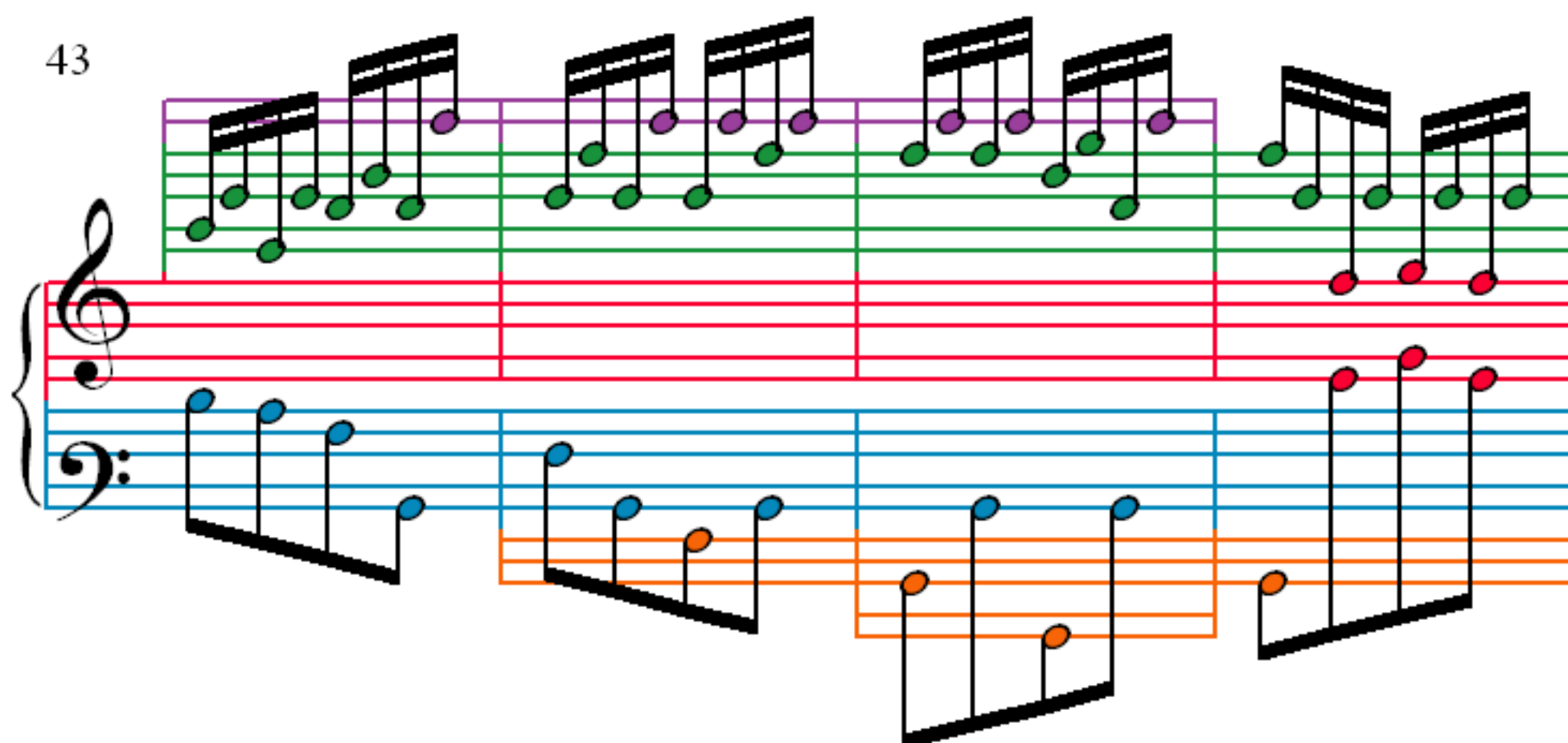
35

Measures 35-38 of the musical score. The treble clef staff contains a melodic line with eighth and sixteenth notes, highlighted with green and red boxes. The bass clef staff contains a simple accompaniment of eighth notes, highlighted with blue and orange boxes.

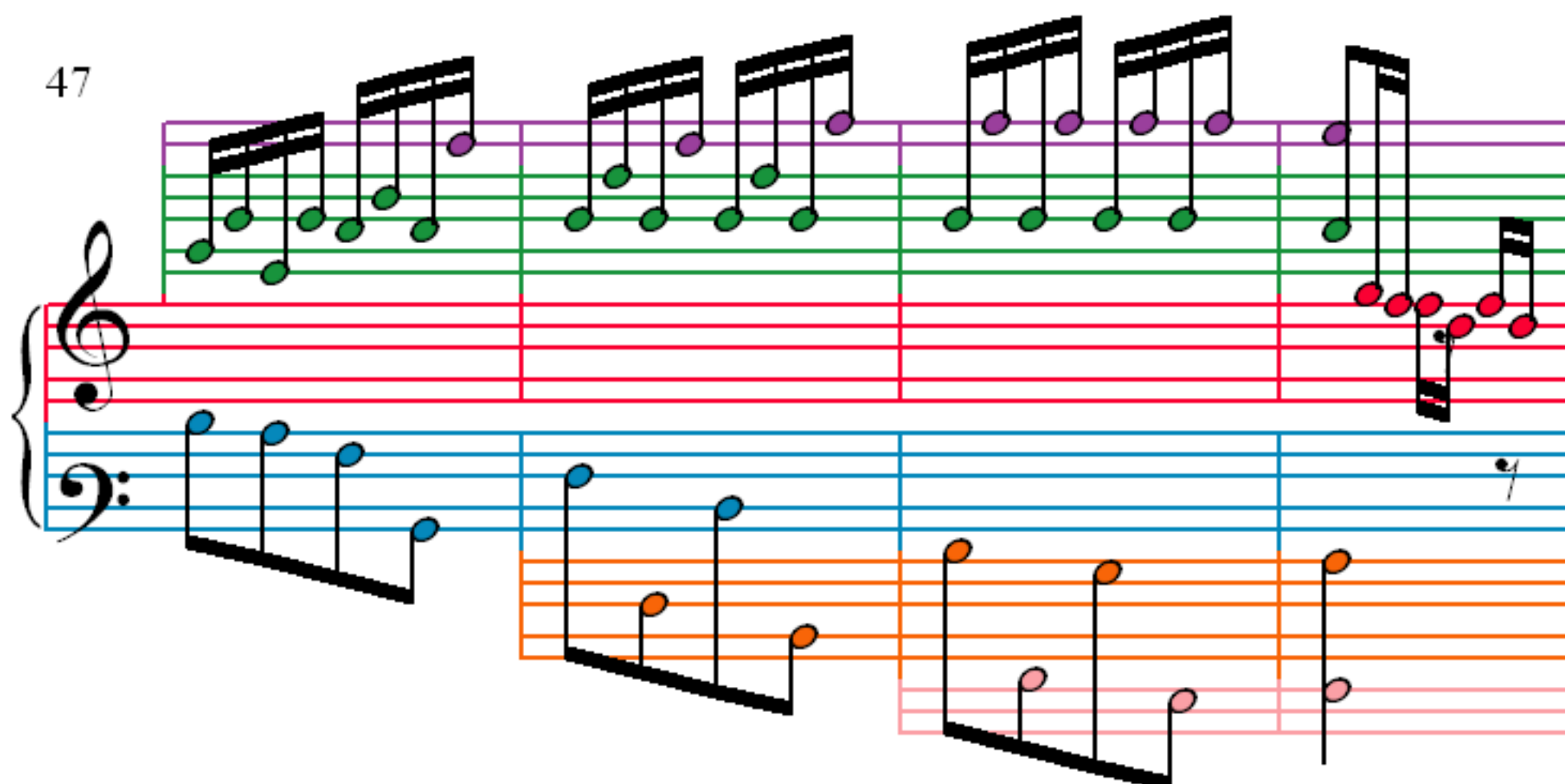
39

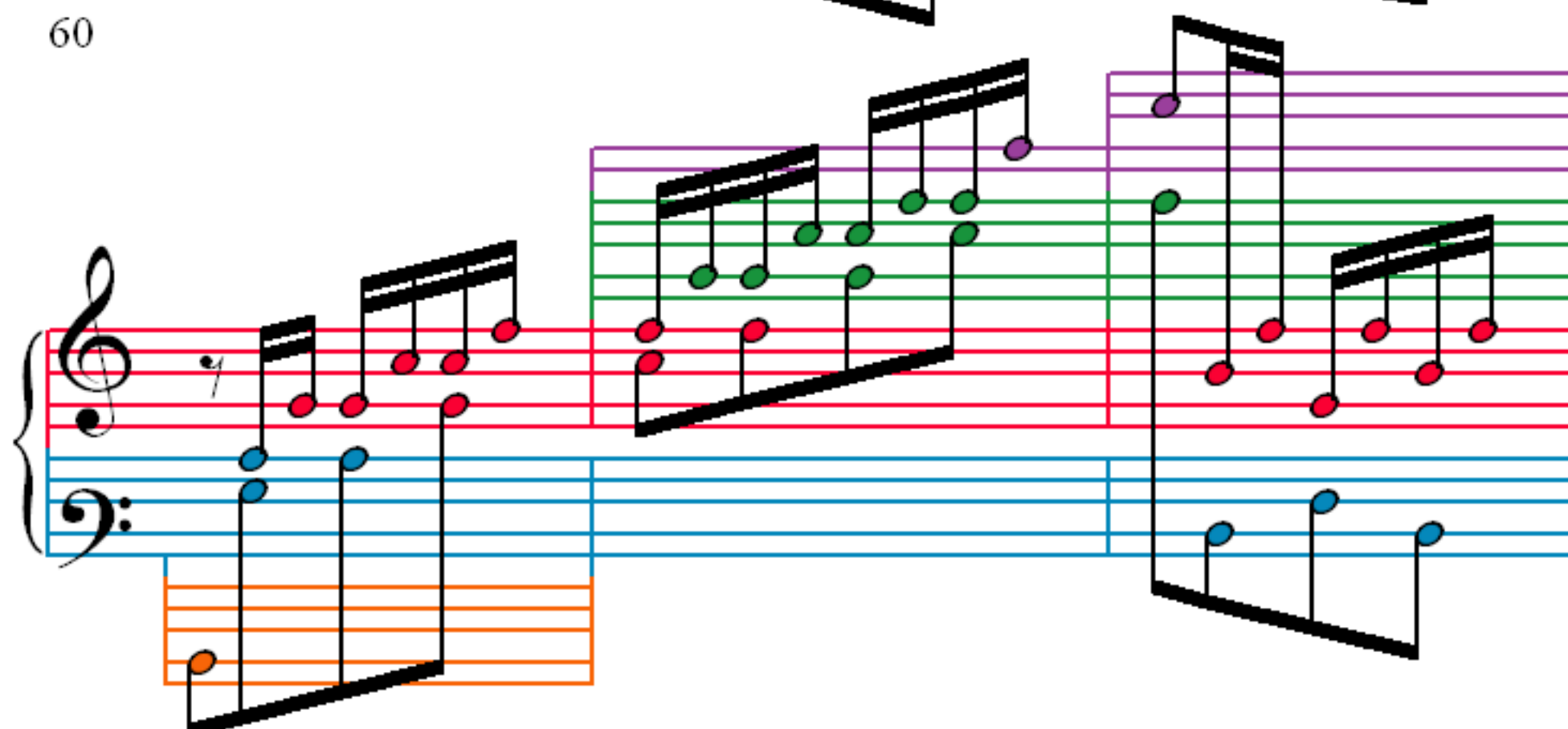
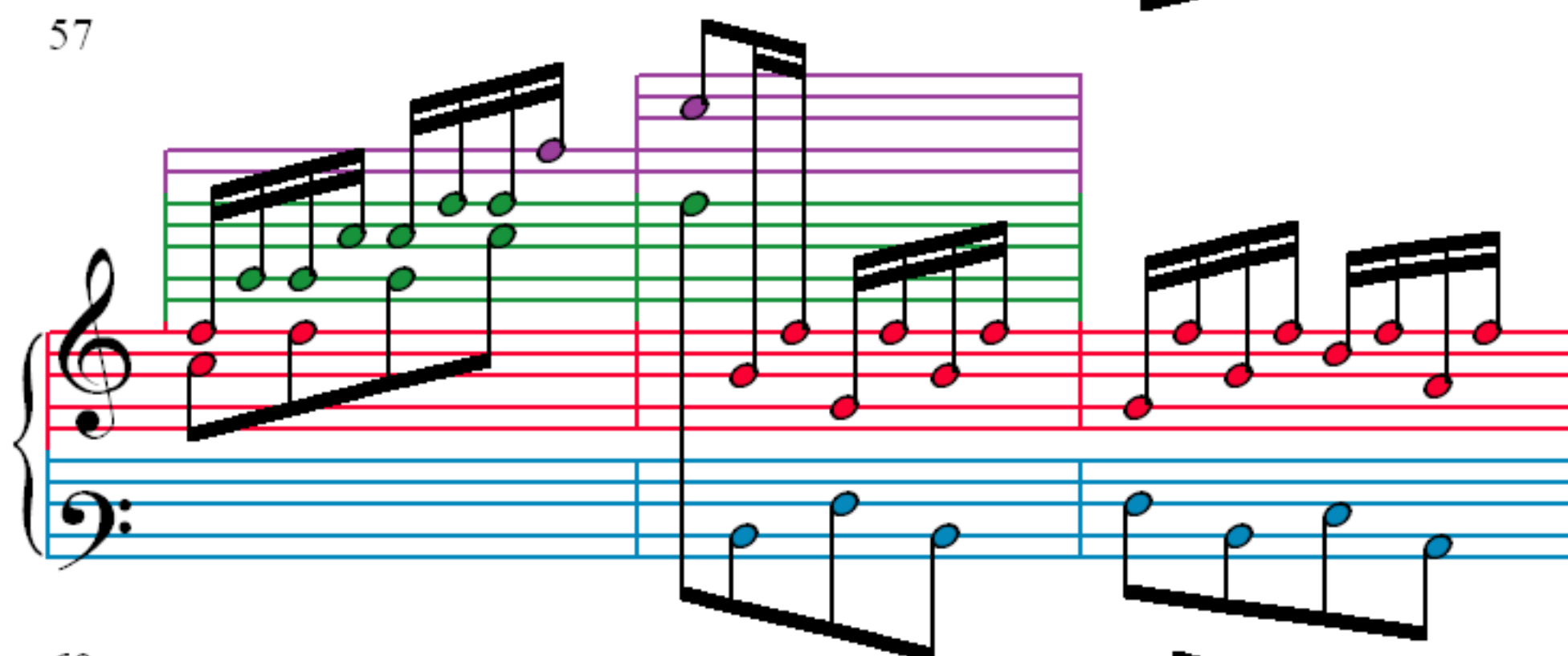
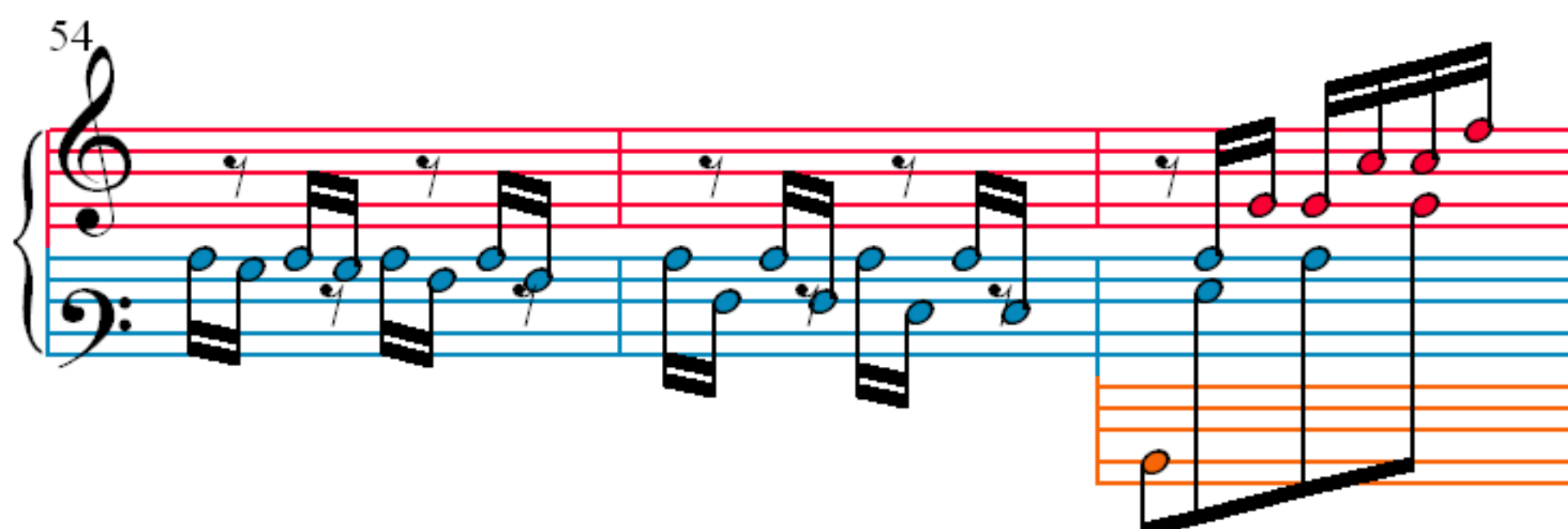


43



47





63

Measures 63-66 of the musical score. The treble staff features a sequence of eighth-note chords, with the first two measures highlighted in green and the last two in red. The bass staff contains a simple eighth-note accompaniment, with the first two measures in blue and the last two in orange. A pink box highlights the final two notes of the bass line in measure 66.

67

Measures 67-70 of the musical score. The treble staff continues with eighth-note chords, with measures 67-68 in green and 69-70 in red. The bass staff maintains the eighth-note accompaniment, with measures 67-68 in blue and 69-70 in orange. Pink boxes highlight the final notes of the bass line in measures 68 and 70.

71

Measures 71-74 of the musical score. The treble staff shows eighth-note chords, with measures 71-73 in green and measure 74 in purple. The bass staff continues the eighth-note accompaniment, with measures 71-73 in blue and measure 74 in orange. Pink boxes highlight the final notes of the bass line in measures 73 and 74.



75

Measures 75-77 of a piano sonata. The notation is in treble and bass staves. Measure 75 features a treble staff with a sequence of eighth notes (red, green, green, red, red, green, green) and a bass staff with two quarter notes (red, green). Measure 76 features a treble staff with a sequence of eighth notes (green, green, green, green, green, green, green) and a bass staff with two quarter notes (red, green). Measure 77 features a treble staff with a sequence of eighth notes (green, green, green, green, green, green, green) and a bass staff with two quarter notes (red, green).

78

Measures 78-80 of a piano sonata. The notation is in treble and bass staves. Measure 78 features a treble staff with a sequence of eighth notes (purple, purple, purple, purple, purple, purple, purple) and a bass staff with two quarter notes (red, green). Measure 79 features a treble staff with a sequence of eighth notes (purple, purple, purple, purple, purple, purple, purple) and a bass staff with two quarter notes (red, green). Measure 80 features a treble staff with a sequence of eighth notes (purple, purple, purple, purple, purple, purple, purple) and a bass staff with two quarter notes (red, green).

81

Measures 81-83 of a piano sonata. The notation is in treble and bass staves. Measure 81 features a treble staff with a sequence of eighth notes (purple, purple, purple, purple, purple, purple, purple) and a bass staff with two quarter notes (red, green). Measure 82 features a treble staff with a sequence of eighth notes (green, green, green, green, green, green, green) and a bass staff with two quarter notes (red, green). Measure 83 features a treble staff with a sequence of eighth notes (green, green, green, green, green, green, green) and a bass staff with two quarter notes (red, green).

84

Measures 84-86 of a piano sonata. The notation is in treble and bass staves. Measure 84 features a treble staff with a sequence of eighth notes (green, green, green, green, green, green, green) and a bass staff with two quarter notes (red, green). Measure 85 features a treble staff with a sequence of eighth notes (purple, purple, purple, purple, purple, purple, purple) and a bass staff with two quarter notes (red, green). Measure 86 features a treble staff with a sequence of eighth notes (green, green, green, green, green, green, green) and a bass staff with two quarter notes (red, green).

87

Measures 87-90 of Sonata No. 24 Op. 78. The notation is presented in a system with four staves. The top staff is purple and contains two measures of music. The second staff is green and contains two measures of music. The third staff is red and contains two measures of music. The bottom staff is blue and contains two measures of music. The music is written in a treble clef. The notes are colored: purple, green, red, and blue. The notation includes various musical symbols such as notes, rests, and bar lines.

91

Measures 91-94 of Sonata No. 24 Op. 78. The notation is presented in a system with four staves. The top staff is purple and contains two measures of music. The second staff is green and contains two measures of music. The third staff is red and contains two measures of music. The bottom staff is blue and contains two measures of music. The music is written in a treble clef. The notes are colored: purple, green, red, and blue. The notation includes various musical symbols such as notes, rests, and bar lines.

95

Measures 95-98 of Sonata No. 24 Op. 78. The notation is presented in a system with four staves. The top staff is purple and contains two measures of music. The second staff is green and contains two measures of music. The third staff is red and contains two measures of music. The bottom staff is blue and contains two measures of music. The music is written in a treble clef. The notes are colored: purple, green, red, and blue. The notation includes various musical symbols such as notes, rests, and bar lines.



99

Measures 99-102 of a piano sonata. The score is written for two staves: a treble staff (top) and a bass staff (bottom). The treble staff features a series of ascending eighth-note chords, with notes colored red and green. The bass staff features a series of ascending eighth-note chords, with notes colored blue and orange. The notation is presented in a simplified, color-coded format.

103

Measures 103-106 of a piano sonata. The score is written for two staves: a treble staff (top) and a bass staff (bottom). The treble staff features a series of ascending eighth-note chords, with notes colored red and green. The bass staff features a series of ascending eighth-note chords, with notes colored blue and orange. The notation is presented in a simplified, color-coded format.

107

Measures 107-110 of a piano sonata. The score is written for two staves: a treble staff (top) and a bass staff (bottom). The treble staff features a series of ascending eighth-note chords, with notes colored red and green. The bass staff features a series of ascending eighth-note chords, with notes colored blue and orange. The notation is presented in a simplified, color-coded format.

111

Measures 111-113. Treble clef: eighth-note chords. Bass clef: eighth notes and rests.

114

Measures 114-115. Treble clef: eighth-note chords. Bass clef: eighth notes. Measure 115 has a system extension.

116

Measures 116-118. Treble clef: eighth-note chords. Bass clef: eighth notes. Measure 116 has a system extension.

119

Measures 119-121. Treble clef: eighth-note chords. Bass clef: eighth notes. Measure 119 has a system extension.

122

126

130

134

Measures 134-136 of a piano sonata. The notation is presented in a grand staff with treble and bass clefs. The right hand (treble clef) features a melodic line with eighth and sixteenth notes, while the left hand (bass clef) provides a simple harmonic accompaniment with quarter notes. The notes are color-coded: red for the first half of the piece, green for the second half, and purple for the third half. The background is divided into three colored sections: red, green, and purple.

137

Measures 137-139 of a piano sonata. The notation is presented in a grand staff with treble and bass clefs. The right hand (treble clef) features a melodic line with eighth and sixteenth notes, while the left hand (bass clef) provides a simple harmonic accompaniment with quarter notes. The notes are color-coded: red for the first half of the piece, green for the second half, and purple for the third half. The background is divided into three colored sections: red, green, and purple.

140

Measures 140-142 of a piano sonata. The notation is presented in a grand staff with treble and bass clefs. The right hand (treble clef) features a melodic line with eighth and sixteenth notes, while the left hand (bass clef) provides a simple harmonic accompaniment with quarter notes. The notes are color-coded: red for the first half of the piece, green for the second half, and purple for the third half. The background is divided into three colored sections: red, green, and purple.

143

Measures 143-145 of a piano sonata. The notation is presented in a grand staff with treble and bass clefs. The right hand (treble clef) features a melodic line with eighth and sixteenth notes, while the left hand (bass clef) provides a simple harmonic accompaniment with quarter notes. The notes are color-coded: red for the first half of the piece, green for the second half, and purple for the third half. The background is divided into three colored sections: red, green, and purple.

146

Measures 146 and 147 of the musical score. Measure 146 features a treble staff with a sequence of eighth notes (G4, A4, B4, C5, B4, A4, G4) and a bass staff with a whole note (C3). Measure 147 continues the treble staff with a sequence of eighth notes (F#4, G4, A4, B4, A4, G4, F#4) and a bass staff with a whole note (C3). The staves are color-coded: treble is red, bass is blue, and an additional staff above is green.

148

Measures 148 and 149 of the musical score. Measure 148 features a treble staff with a sequence of eighth notes (G4, A4, B4, C5, B4, A4, G4) and a bass staff with a whole note (C3). Measure 149 continues the treble staff with a sequence of eighth notes (F#4, G4, A4, B4, A4, G4, F#4) and a bass staff with a whole note (C3). The staves are color-coded: treble is red, bass is blue, and an additional staff above is green.

150

Measures 150 and 151 of the musical score. Measure 150 features a treble staff with a sequence of eighth notes (G4, A4, B4, C5, B4, A4, G4) and a bass staff with a whole note (C3). Measure 151 continues the treble staff with a sequence of eighth notes (F#4, G4, A4, B4, A4, G4, F#4) and a bass staff with a whole note (C3). The staves are color-coded: treble is red, bass is blue, and an additional staff above is green.

152

Measures 152 and 153 of the musical score. Measure 152 features a treble staff with a sequence of eighth notes (G4, A4, B4, C5, B4, A4, G4) and a bass staff with a whole note (C3). Measure 153 continues the treble staff with a sequence of eighth notes (F#4, G4, A4, B4, A4, G4, F#4) and a bass staff with a whole note (C3). The staves are color-coded: treble is red, bass is blue, and an additional staff above is green.

154

Measures 154-156 of a musical score. Measure 154 features a treble clef with a whole note chord (F4, A4) and a bass clef with a whole note chord (C3, E2). Measure 155 shows a treble clef with a whole note chord (F4, A4) and a bass clef with a whole note chord (C3, E2). Measure 156 shows a treble clef with a whole note chord (F4, A4) and a bass clef with a whole note chord (C3, E2). The notation is color-coded: purple for the treble clef, green for the bass clef, and red for the notes.

157

Measures 157-159 of a musical score. Measure 157 features a treble clef with a whole note chord (F4, A4) and a bass clef with a whole note chord (C3, E2). Measure 158 shows a treble clef with a whole note chord (F4, A4) and a bass clef with a whole note chord (C3, E2). Measure 159 shows a treble clef with a whole note chord (F4, A4) and a bass clef with a whole note chord (C3, E2). The notation is color-coded: purple for the treble clef, green for the bass clef, and red for the notes.

160

Measures 160-162 of a musical score. Measure 160 features a treble clef with a whole note chord (F4, A4) and a bass clef with a whole note chord (C3, E2). Measure 161 shows a treble clef with a whole note chord (F4, A4) and a bass clef with a whole note chord (C3, E2). Measure 162 shows a treble clef with a whole note chord (F4, A4) and a bass clef with a whole note chord (C3, E2). The notation is color-coded: purple for the treble clef, green for the bass clef, and red for the notes.

163

Measures 163-165 of a musical score. Measure 163 features a treble clef with a whole note chord (F4, A4) and a bass clef with a whole note chord (C3, E2). Measure 164 shows a treble clef with a whole note chord (F4, A4) and a bass clef with a whole note chord (C3, E2). Measure 165 shows a treble clef with a whole note chord (F4, A4) and a bass clef with a whole note chord (C3, E2). The notation is color-coded: purple for the treble clef, green for the bass clef, and red for the notes.



166

Measures 166-168 of the musical score. The system consists of three staves: a top staff with a treble clef, a middle staff with a treble clef, and a bottom staff with a bass clef. The top staff has a purple background and contains green notes. The middle staff has a red background and contains red notes. The bottom staff has a blue background and contains blue notes. The notation includes eighth and sixteenth notes, some with beams, and rests.

169

Measures 169-171 of the musical score. The system consists of three staves: a top staff with a treble clef, a middle staff with a treble clef, and a bottom staff with a bass clef. The top staff has a purple background and contains green notes. The middle staff has a red background and contains red notes. The bottom staff has a blue background and contains blue notes. The notation includes eighth and sixteenth notes, some with beams, and rests.

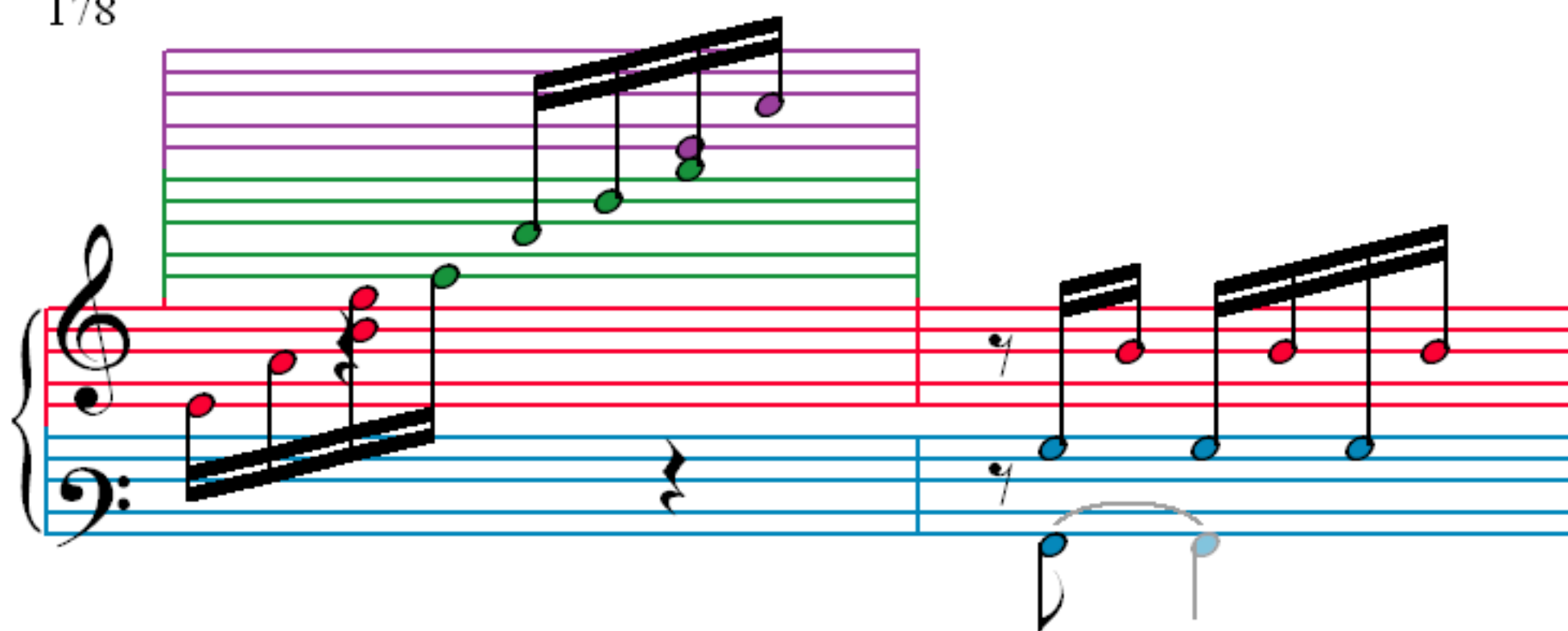
172

Measures 172-174 of the musical score. The system consists of three staves: a top staff with a treble clef, a middle staff with a treble clef, and a bottom staff with a bass clef. The top staff has a green background and contains green notes. The middle staff has a red background and contains red notes. The bottom staff has a blue background and contains blue notes. The notation includes eighth and sixteenth notes, some with beams, and rests.

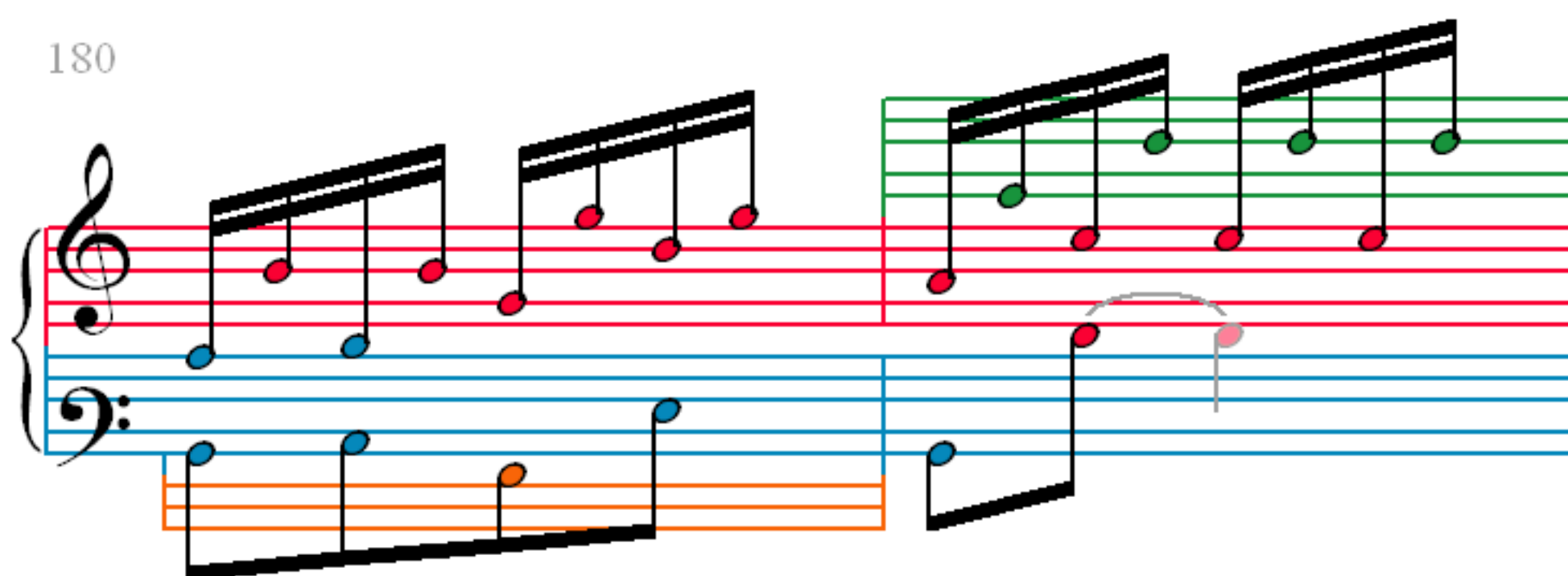
175

Measures 175-177 of the musical score. The system consists of three staves: a top staff with a treble clef, a middle staff with a treble clef, and a bottom staff with a bass clef. The top staff has a green background and contains green notes. The middle staff has a red background and contains red notes. The bottom staff has a blue background and contains blue notes. The notation includes eighth and sixteenth notes, some with beams, and rests. There is an additional staff with an orange background and orange notes below the main system.

178



180



182

