

Sonata No. 19 Op. 49, No. 1

2nd Movement: Rondo-Allegro

L. V. Beethoven (1770–1827)

1

3

6

9

12

15

18

21

24

Measures 24-26 of the musical score. Measure 24 features a treble staff with a purple line and a bass staff with a blue line. Measure 25 features a treble staff with a purple line and a bass staff with a blue line. Measure 26 features a treble staff with a purple line and a bass staff with a blue line.

27

Measures 27-29 of the musical score. Measure 27 features a treble staff with a purple line and a bass staff with a blue line. Measure 28 features a treble staff with a purple line and a bass staff with a blue line. Measure 29 features a treble staff with a purple line and a bass staff with a blue line.

30

Measures 30-32 of the musical score. Measure 30 features a treble staff with a purple line and a bass staff with a blue line. Measure 31 features a treble staff with a purple line and a bass staff with a blue line. Measure 32 features a treble staff with a purple line and a bass staff with a blue line.

33

Measures 33-35 of the musical score. Measure 33 features a treble staff with a purple line and a bass staff with a blue line. Measure 34 features a treble staff with a purple line and a bass staff with a blue line. Measure 35 features a treble staff with a purple line and a bass staff with a blue line.

36

Measures 36-38. Treble clef: Measure 36 has a whole rest, followed by eighth and sixteenth notes in measures 37 and 38. Bass clef: Steady eighth-note pattern. An orange line highlights the bass line from measure 37.

39

Measures 39-41. Treble clef: Eighth and sixteenth notes. Bass clef: Eighth notes, with a dotted quarter note in measure 40.

42

Measures 42-44. Treble clef: Eighth and sixteenth notes. Bass clef: Eighth notes, with a dotted quarter note in measure 43.

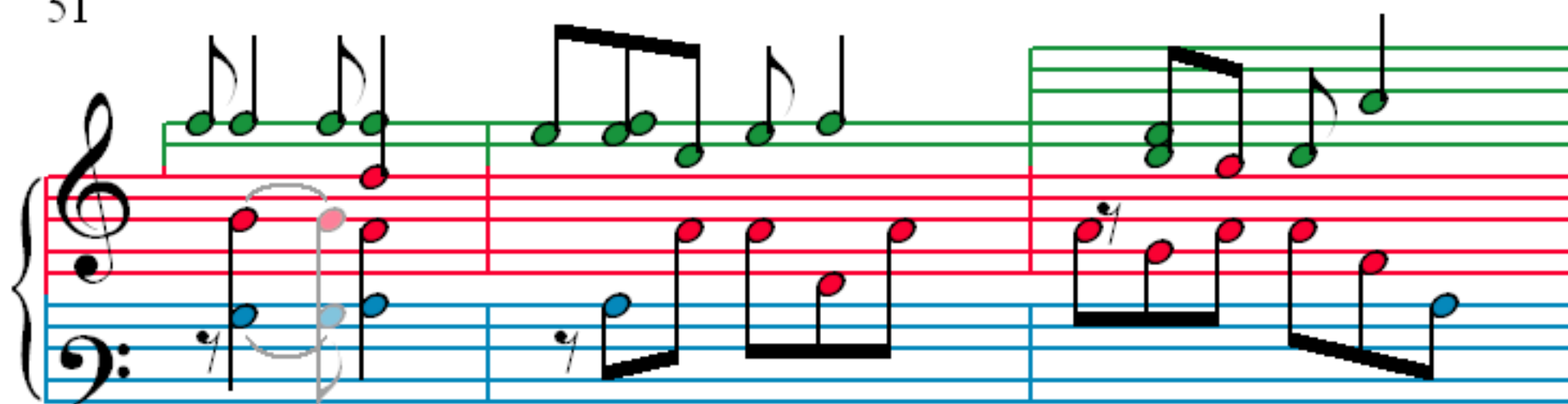
45

Measures 45-47. Treble clef: Eighth and sixteenth notes. Bass clef: Eighth notes, with a dotted quarter note in measure 46.

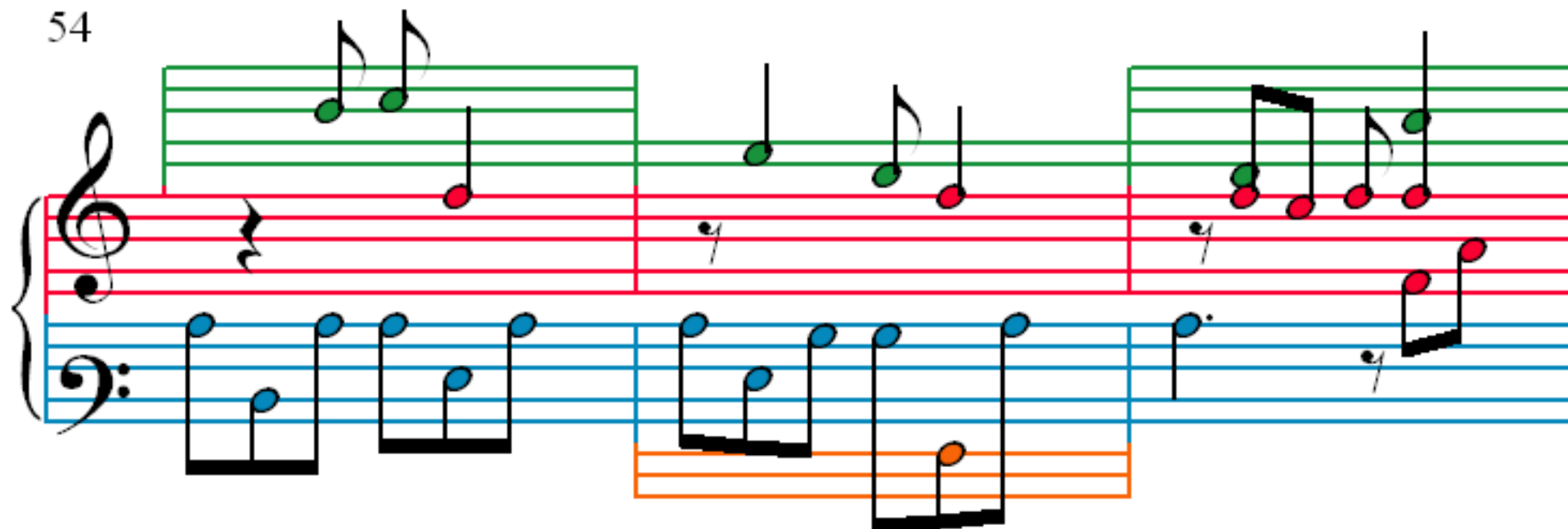
48



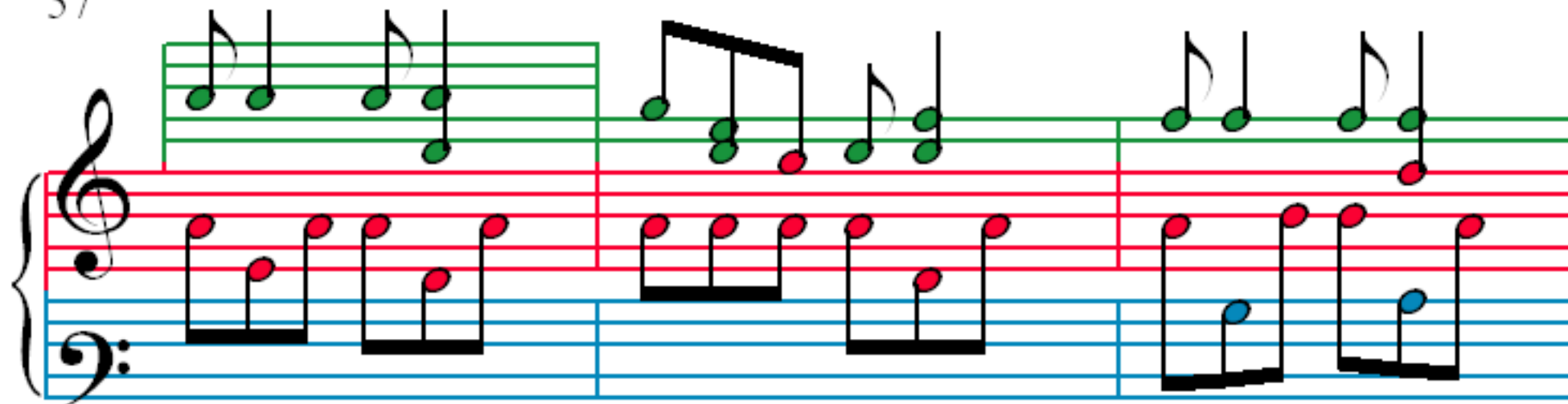
51



54



57



60

Measures 60-62. Treble clef: Measure 60 has four green eighth notes (F4, G4, A4, B4). Measure 61 has four green eighth notes (B4, A4, G4, F4). Measure 62 has two green eighth notes (F4, G4) and a whole note (A4). Bass clef: Measure 60 has four red eighth notes (F3, G3, A3, B3). Measure 61 has four red eighth notes (B3, A3, G3, F3). Measure 62 has two red eighth notes (F3, G3) and a whole note (A3). A blue note (B3) is also present in measure 62.

63

Measures 63-65. Treble clef: Measure 63 has four green eighth notes (F4, G4, A4, B4). Measure 64 has four green eighth notes (B4, A4, G4, F4). Measure 65 has two green eighth notes (F4, G4) and a whole note (A4). Bass clef: Measure 63 has four red eighth notes (F3, G3, A3, B3). Measure 64 has four red eighth notes (B3, A3, G3, F3). Measure 65 has two red eighth notes (F3, G3) and a whole note (A3). A blue note (B3) is also present in measure 65.

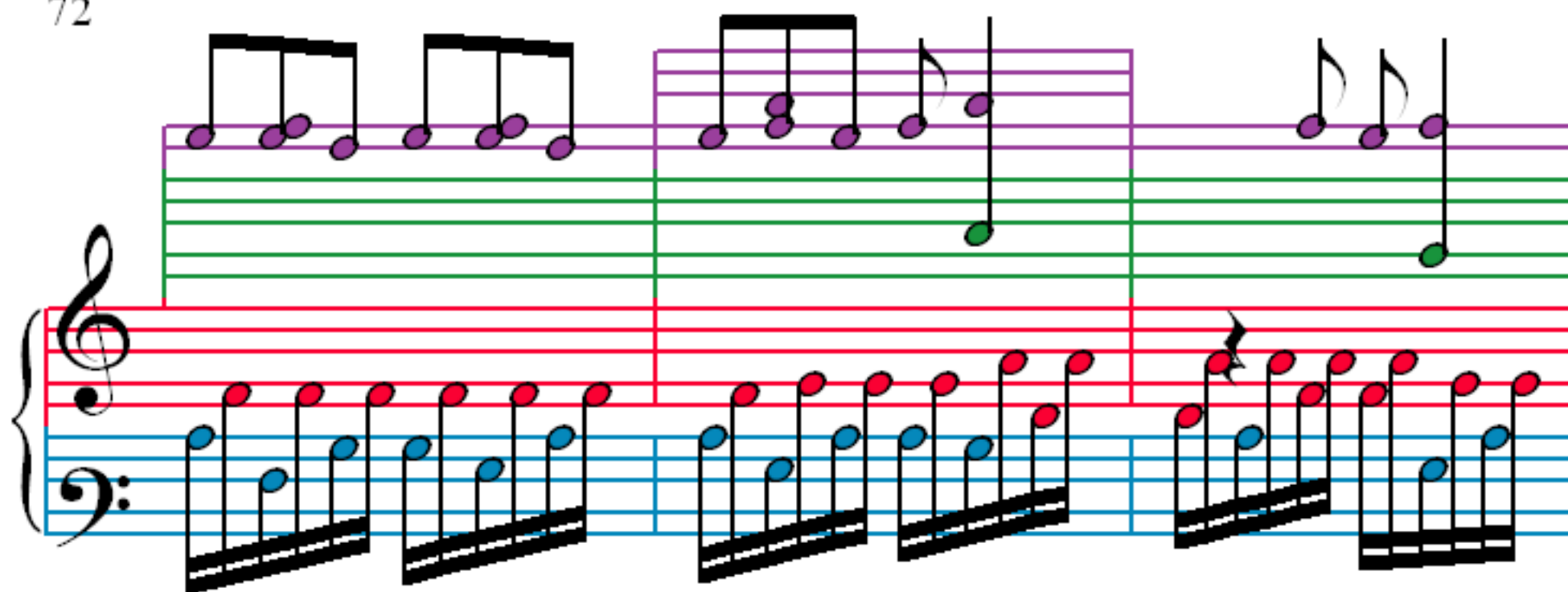
66

Measures 66-68. Treble clef: Measure 66 has four green eighth notes (F4, G4, A4, B4). Measure 67 has four green eighth notes (B4, A4, G4, F4). Measure 68 has two green eighth notes (F4, G4) and a whole note (A4). Bass clef: Measure 66 has four red eighth notes (F3, G3, A3, B3). Measure 67 has four red eighth notes (B3, A3, G3, F3). Measure 68 has two red eighth notes (F3, G3) and a whole note (A3). A blue note (B3) is also present in measure 68.

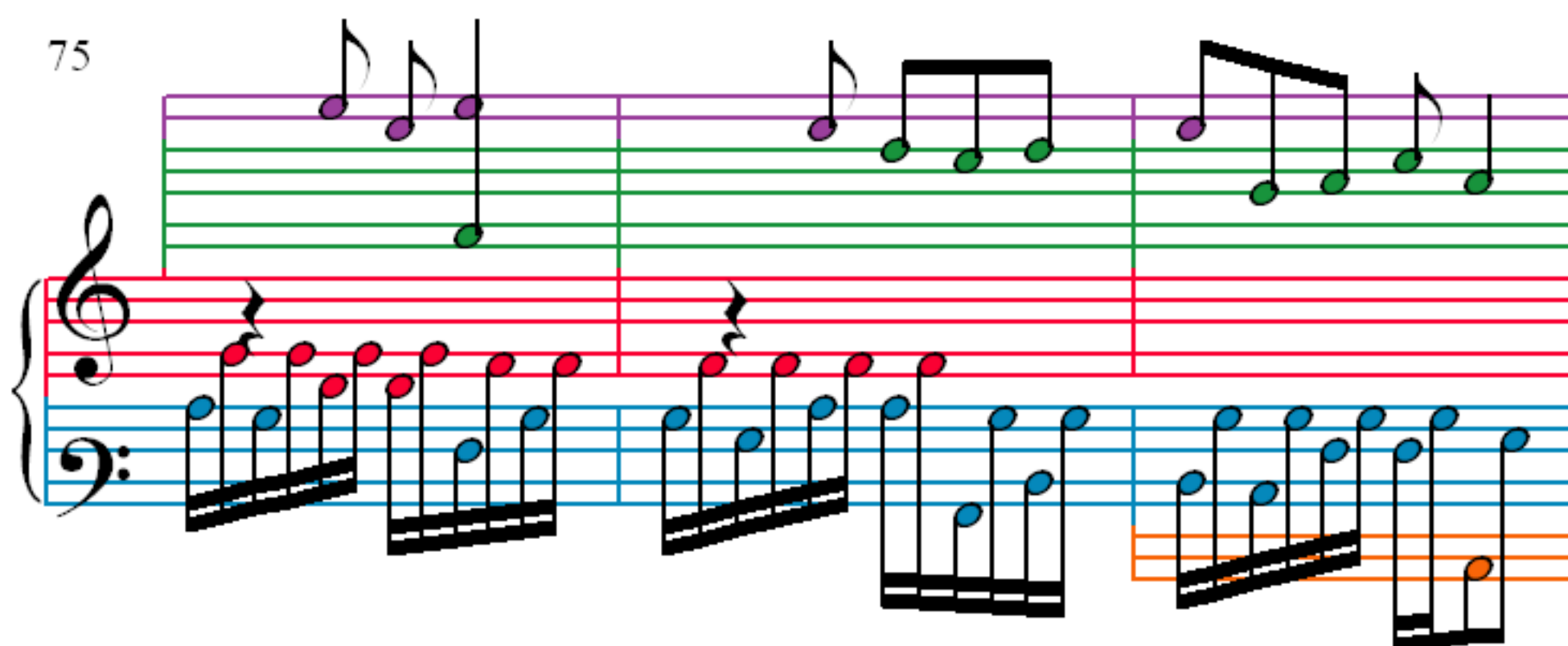
69

Measures 69-71. Treble clef: Measure 69 has four green eighth notes (F4, G4, A4, B4). Measure 70 has four green eighth notes (B4, A4, G4, F4). Measure 71 has two green eighth notes (F4, G4) and a whole note (A4). Bass clef: Measure 69 has four red eighth notes (F3, G3, A3, B3). Measure 70 has four red eighth notes (B3, A3, G3, F3). Measure 71 has two red eighth notes (F3, G3) and a whole note (A3). A blue note (B3) is also present in measure 71.

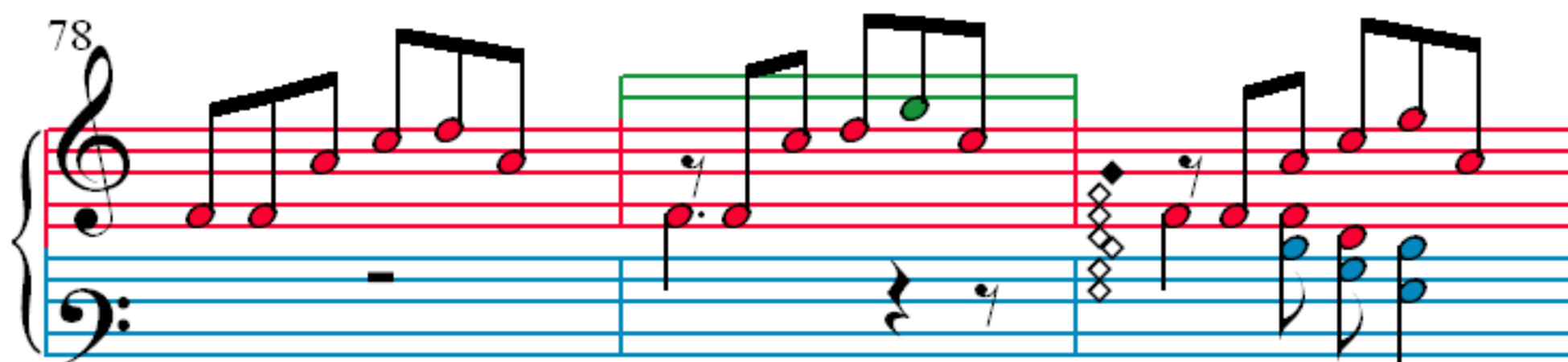
72



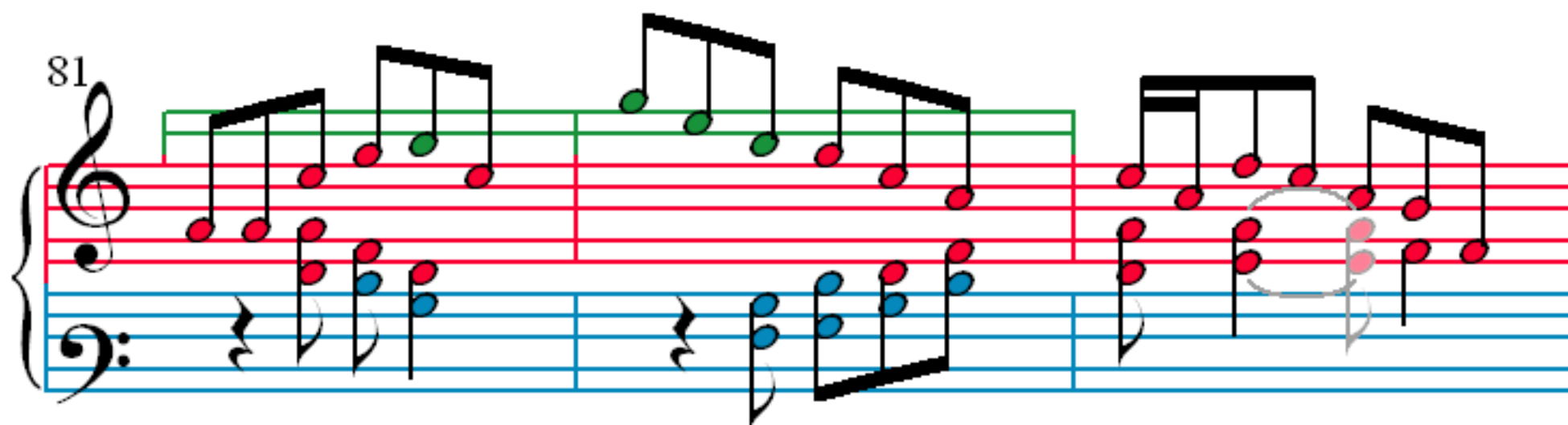
75



78



81



84

87

90

93

96

99

102

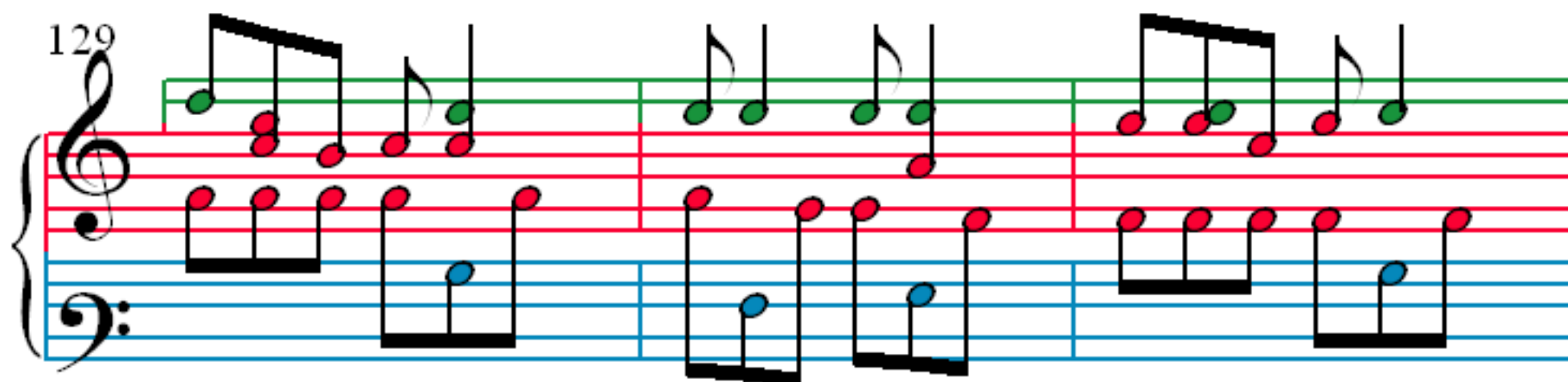
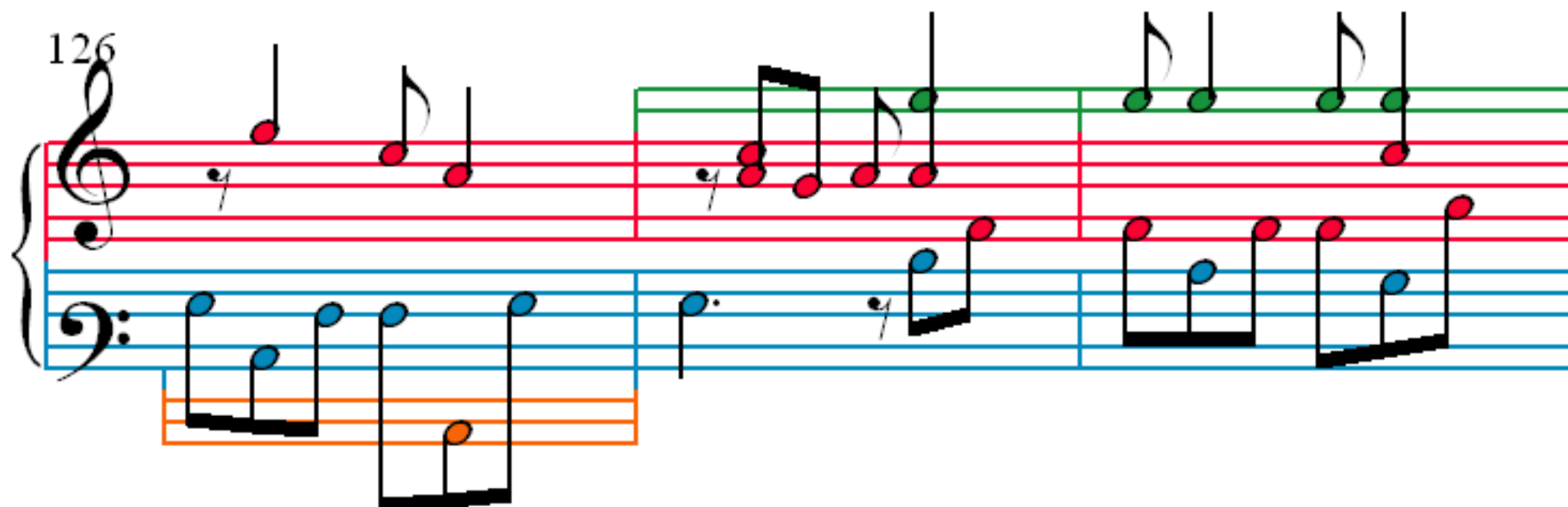
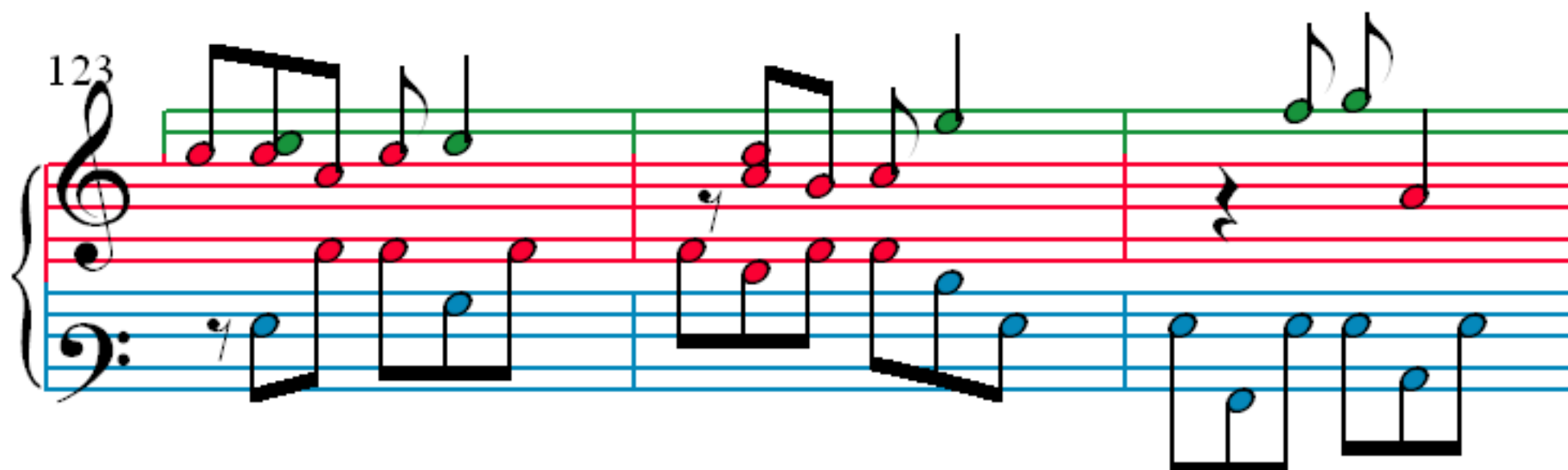
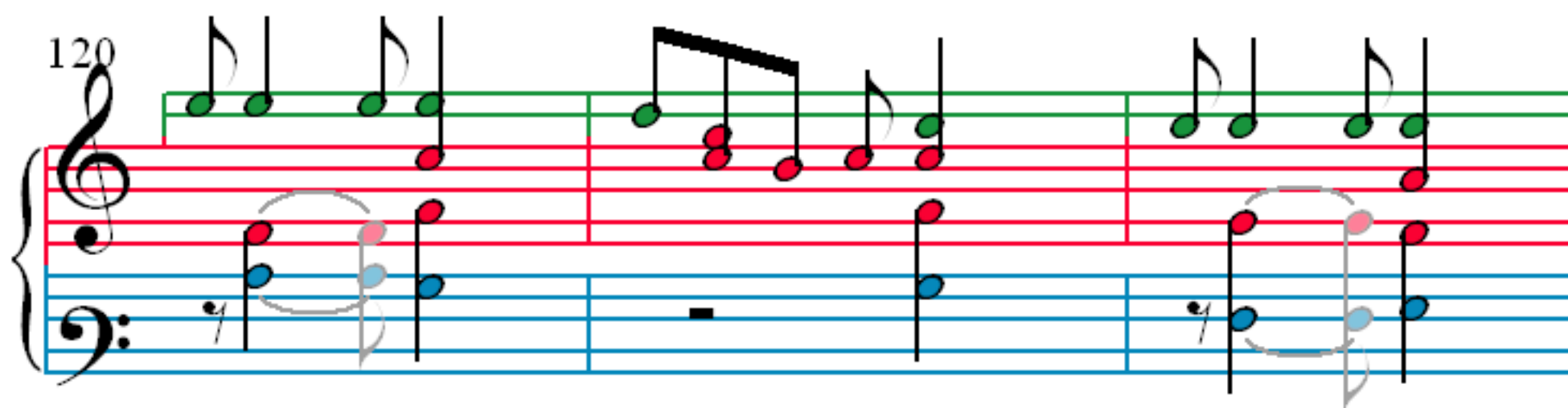
105

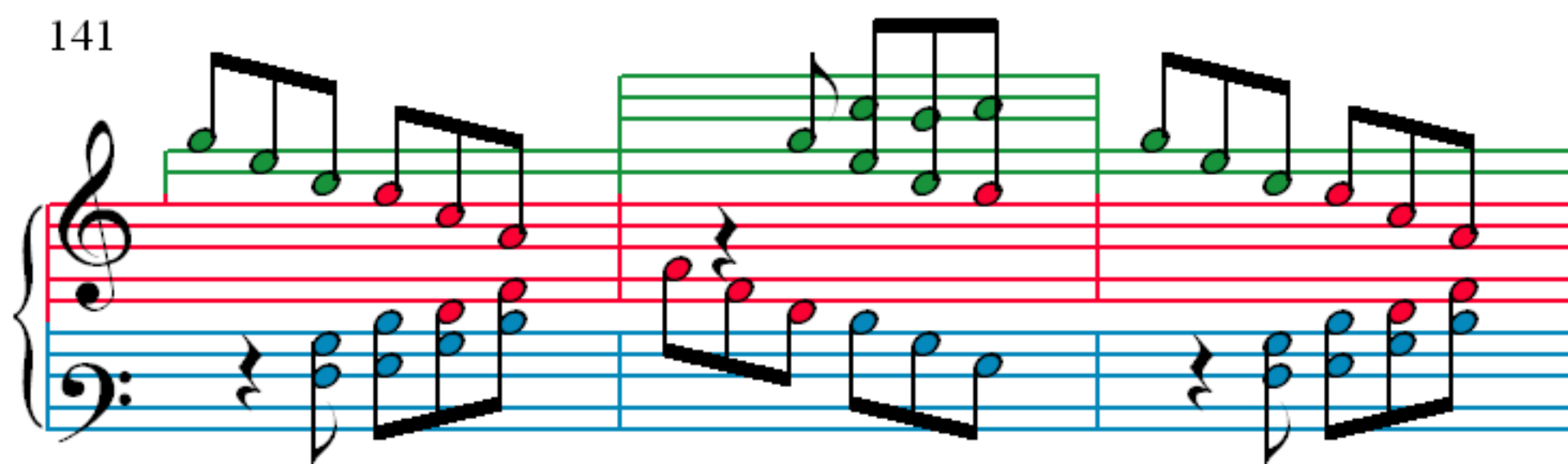
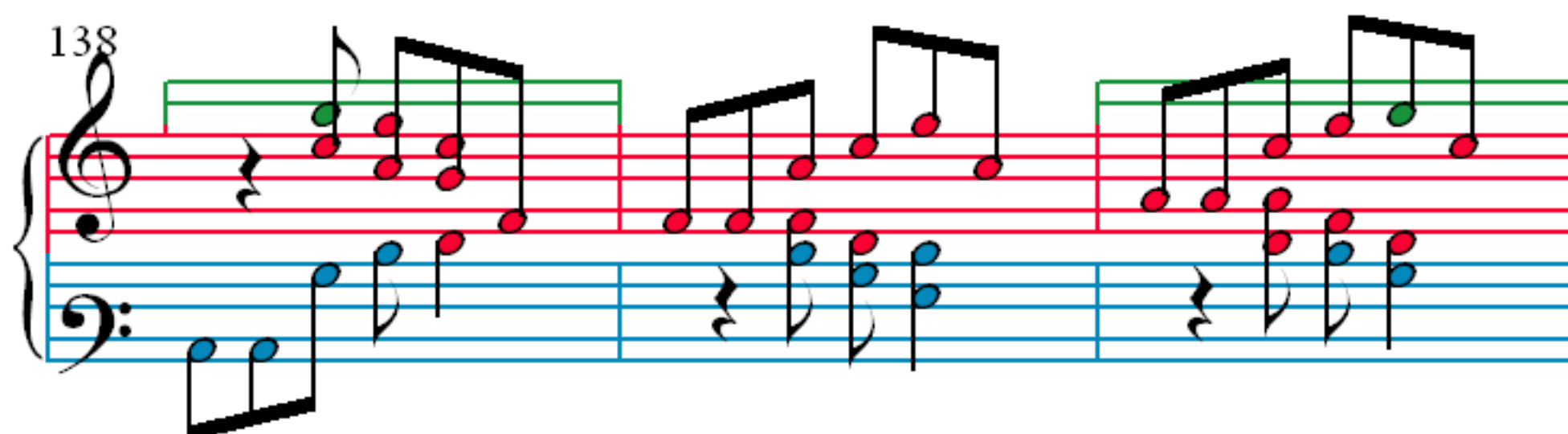
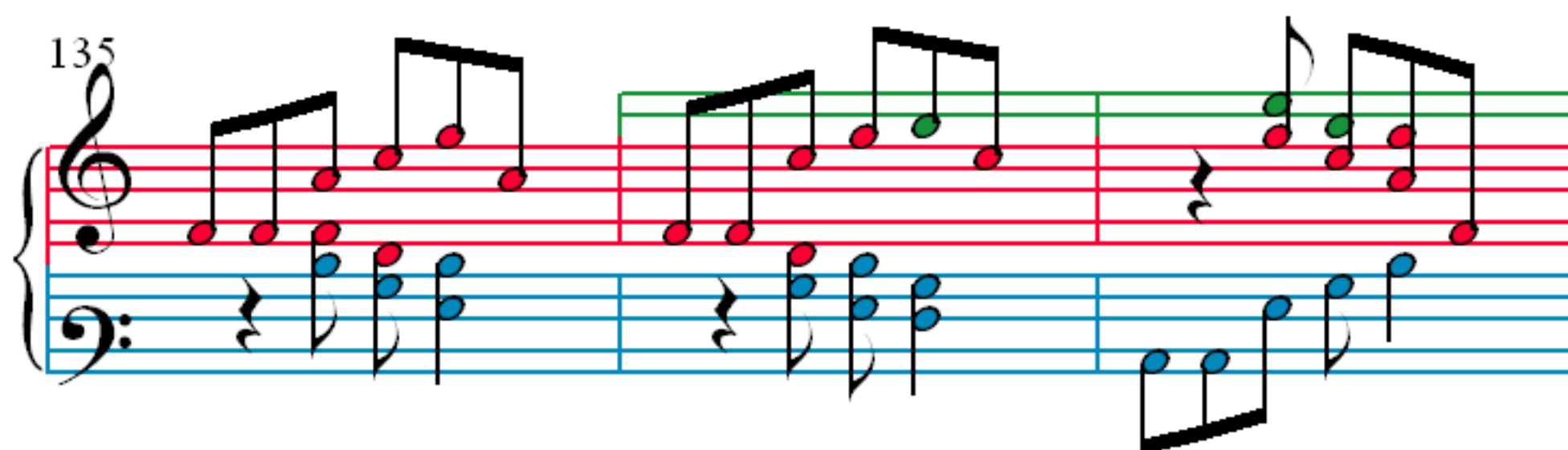
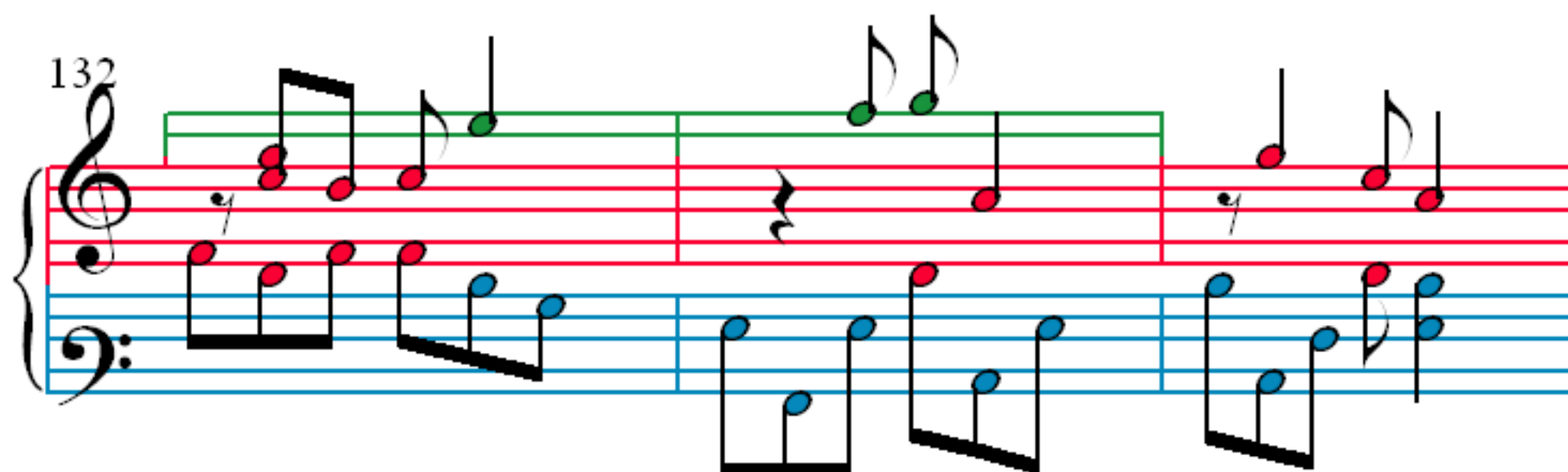
108

111

114

117





144

Measures 144-146 of the musical score. Measure 144 features a treble staff with a sequence of eighth notes (G4, A4, B4, C5) and a bass staff with a descending eighth-note line (F3, E2, D2, C2). Measure 145 shows a treble staff with a triplet of eighth notes (G4, A4, B4) and a bass staff with a dotted half note (F3). Measure 146 continues the treble staff with a triplet of eighth notes (C5, B4, A4) and the bass staff with a dotted half note (F3). Slurs and ties are used to indicate phrasing and continuation.

147

Measures 147-149 of the musical score. Measure 147 has a treble staff with a quarter note (G4) and a bass staff with a whole rest. Measure 148 features a treble staff with a whole rest and a bass staff with a descending eighth-note line (F3, E2, D2, C2). Measure 149 shows a treble staff with a sequence of eighth notes (G4, A4, B4, C5) and a bass staff with a descending eighth-note line (F3, E2, D2, C2). Slurs and ties are used to indicate phrasing and continuation.

150

Measures 150-152 of the musical score. Measure 150 features a treble staff with a sequence of eighth notes (G4, A4, B4, C5) and a bass staff with a descending eighth-note line (F3, E2, D2, C2). Measure 151 shows a treble staff with a sequence of eighth notes (G4, A4, B4, C5) and a bass staff with a descending eighth-note line (F3, E2, D2, C2). Measure 152 continues the treble staff with a sequence of eighth notes (G4, A4, B4, C5) and the bass staff with a descending eighth-note line (F3, E2, D2, C2). Slurs and ties are used to indicate phrasing and continuation.

153

Measures 153-155 of the musical score. Measure 153 features a treble staff with a sequence of eighth notes (G4, A4, B4, C5) and a bass staff with a descending eighth-note line (F3, E2, D2, C2). Measure 154 shows a treble staff with a sequence of eighth notes (G4, A4, B4, C5) and a bass staff with a descending eighth-note line (F3, E2, D2, C2). Measure 155 continues the treble staff with a sequence of eighth notes (G4, A4, B4, C5) and the bass staff with a descending eighth-note line (F3, E2, D2, C2). Slurs and ties are used to indicate phrasing and continuation.

156

Measures 156-158: Treble staff (purple line above) and Bass staff (blue line above, orange line below). Notes are colored green, red, and blue.

159

Measures 159-160: Treble staff (purple line above) and Bass staff (blue line above, orange line below). Notes are colored green, red, and blue.

161

Measures 161-163: Treble staff (purple line above) and Bass staff (blue line above, orange line below). Notes are colored green, red, and blue.