

Die Kunst der Fuge XVII

Contrapunctus XVII Fuga a 2 Clav BWV 1080

J. S. Bach (1685–1750)

3

6

9

13

16

19

22

25

28

31

34

38

Measures 38-40: Treble clef staff contains a sequence of eighth and sixteenth notes. Measures 38 and 39 have red notes, while measure 40 has green notes. The bass clef staff is empty.

41

Measures 41-43: Treble clef staff contains a sequence of eighth and sixteenth notes. Measures 41 and 42 have red notes, while measure 43 has green notes. The bass clef staff is empty.

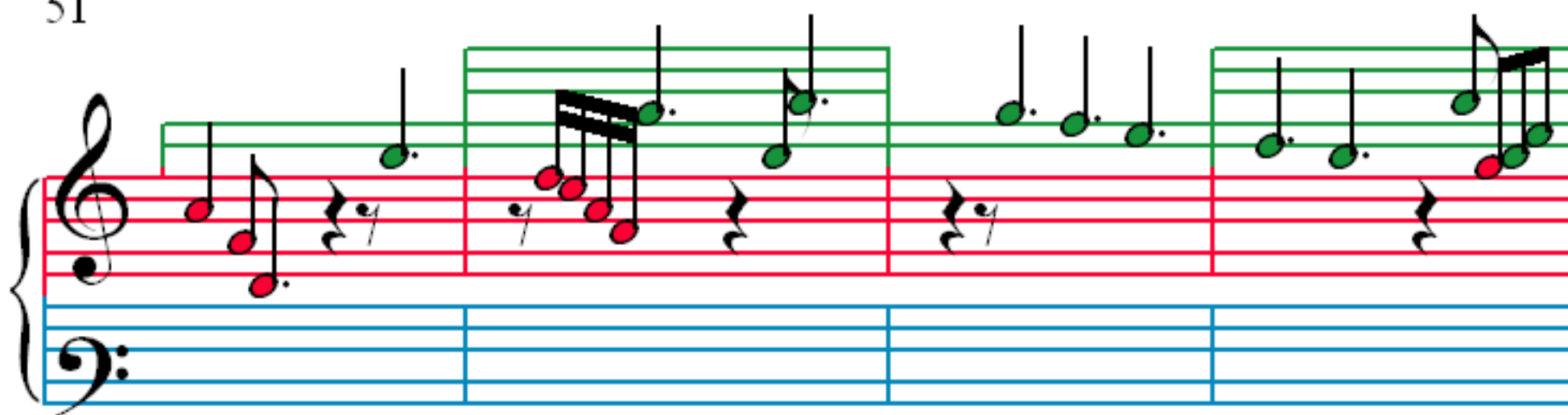
44

Measures 44-47: Treble clef staff contains a sequence of eighth and sixteenth notes. Measures 44 and 45 have red notes, while measures 46 and 47 have green notes. The bass clef staff is empty.

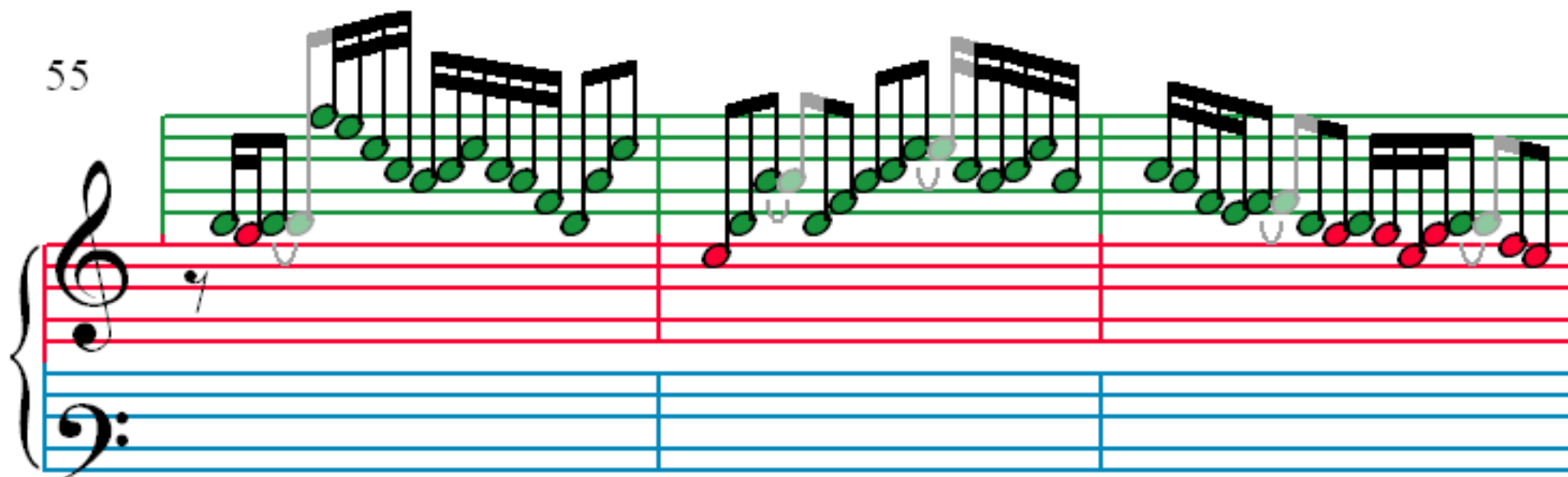
48

Measures 48-50: Treble clef staff contains a sequence of eighth and sixteenth notes. Measures 48 and 49 have red notes, while measure 50 has green notes. The bass clef staff is empty.

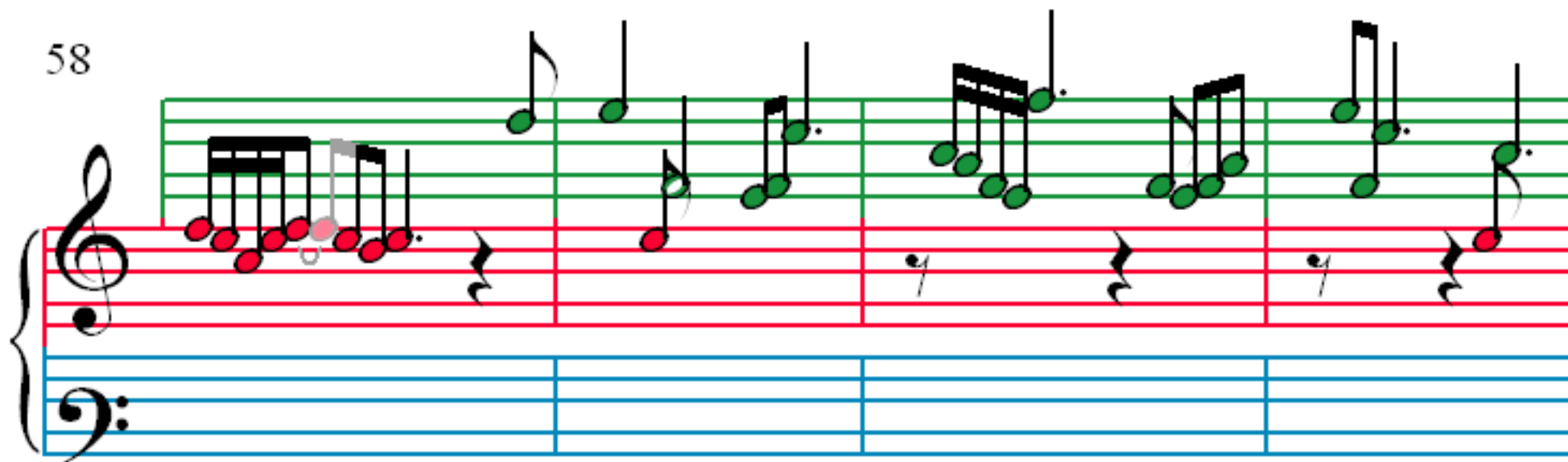
51



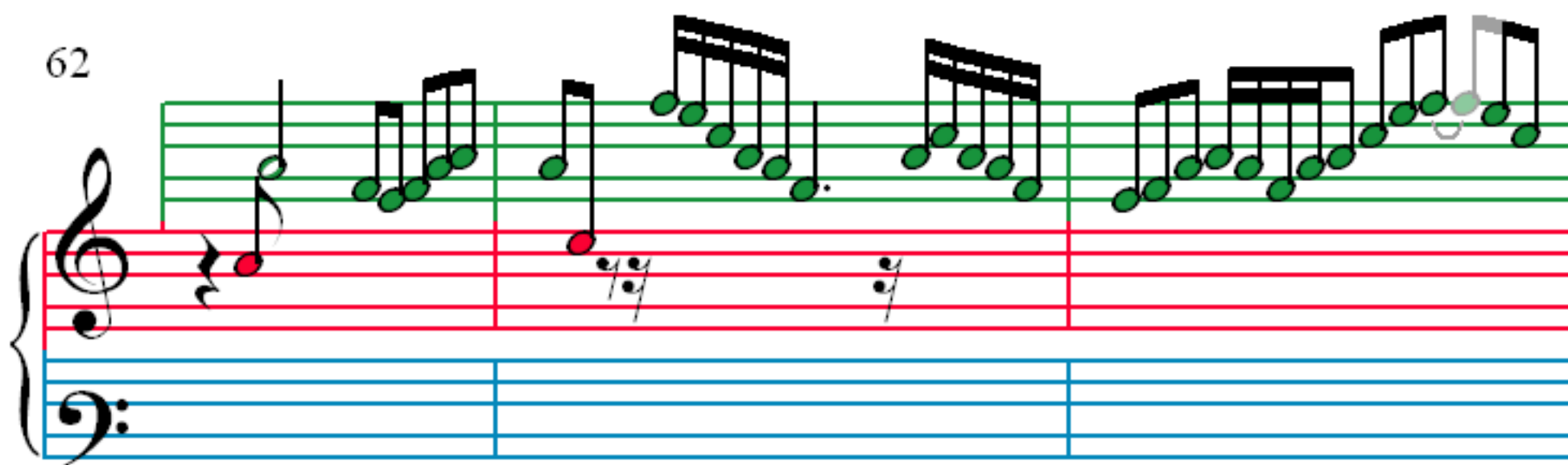
55



58



62



65

Measures 65-67: Treble clef staff contains a series of ascending and descending eighth-note runs, with some notes highlighted in green and others in red. The bass clef staff is empty.

68

Measures 68-71: Treble clef staff contains a series of eighth-note runs, with some notes highlighted in green and others in red. The bass clef staff is empty.

72

Measures 72-73: Treble clef staff contains a series of ascending and descending eighth-note runs, with some notes highlighted in green and others in red. The bass clef staff is empty.

74

Measures 74-76: Treble clef staff contains a series of eighth-note runs, with some notes highlighted in green and others in red. The bass clef staff is empty.