

Musicalisches Opfer, Ricercare

BWV 1079

J. S. Bach (1685–1750)

1

Measures 1-5 of the Musicalisches Opfer, Ricercare. The notation is in treble clef with a key signature of one flat (B-flat). The melody is primarily in the treble staff, with some notes in the bass staff. The notes are color-coded: green for whole notes, red for half notes, and purple for quarter notes. The bass staff contains whole rests.

6

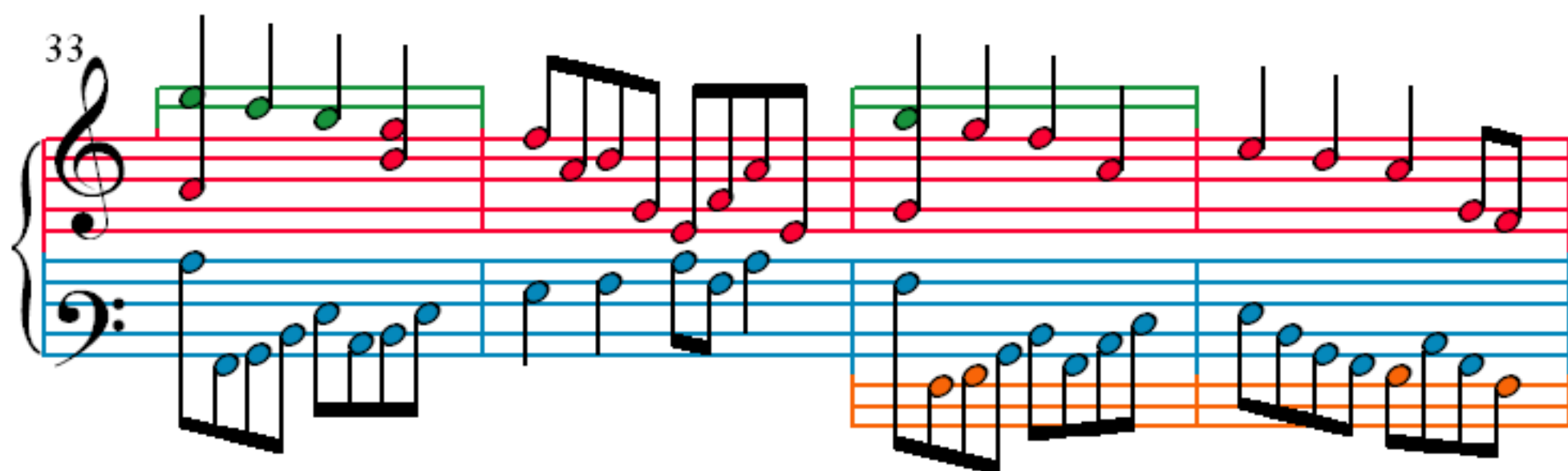
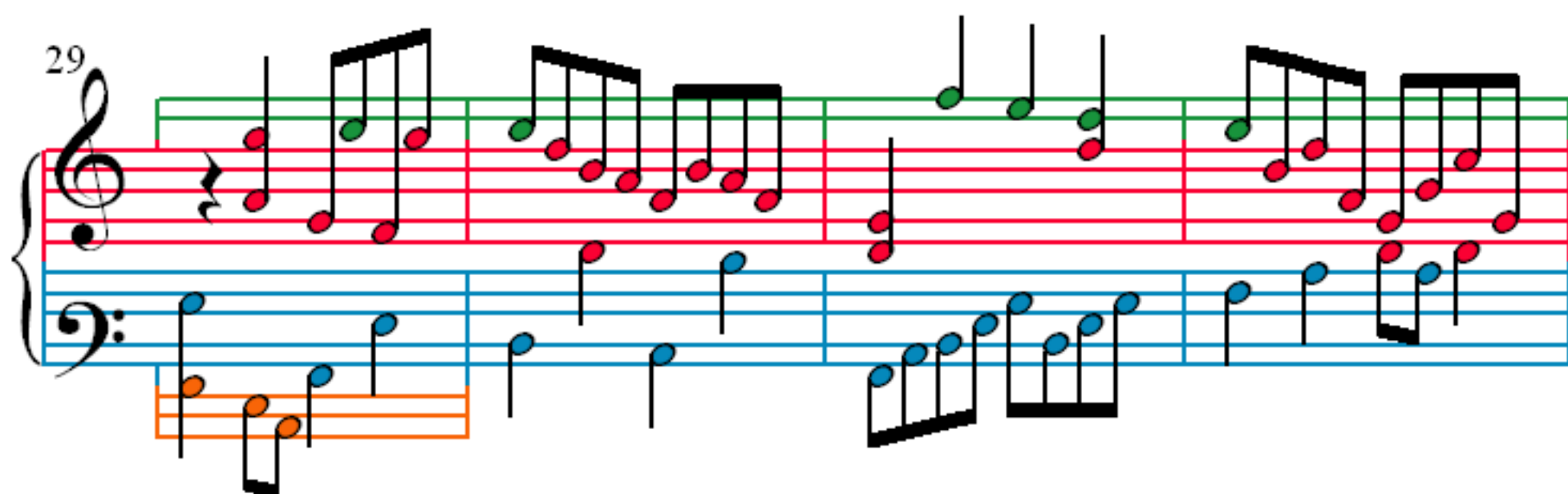
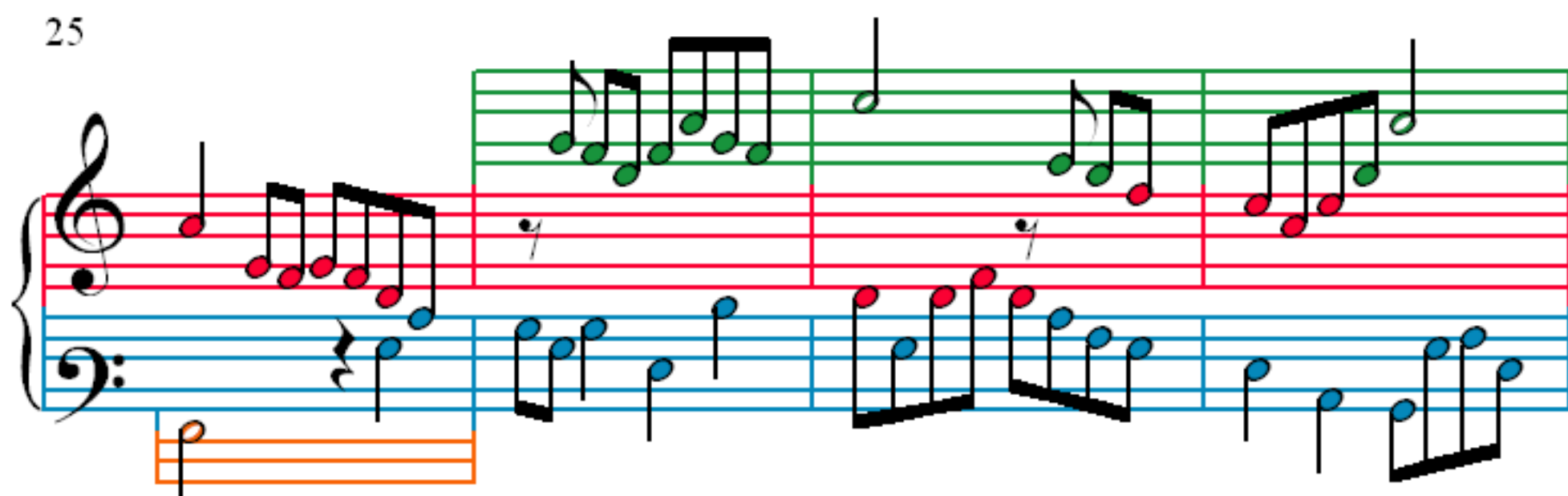
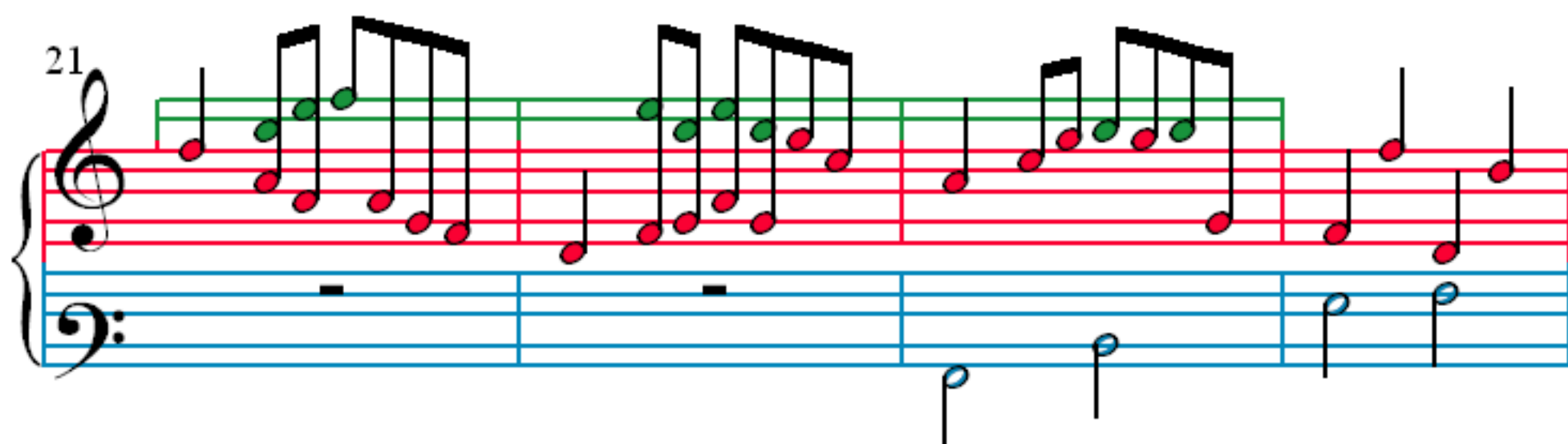
Measures 6-10 of the Musicalisches Opfer, Ricercare. The notation continues in treble clef with a key signature of one flat. The melody is primarily in the treble staff, with some notes in the bass staff. The notes are color-coded: green for whole notes, red for half notes, and purple for quarter notes. The bass staff contains whole rests.

11

Measures 11-15 of the Musicalisches Opfer, Ricercare. The notation continues in treble clef with a key signature of one flat. The melody is primarily in the treble staff, with some notes in the bass staff. The notes are color-coded: green for whole notes, red for half notes, and purple for quarter notes. The bass staff contains whole rests.

16

Measures 16-20 of the Musicalisches Opfer, Ricercare. The notation continues in treble clef with a key signature of one flat. The melody is primarily in the treble staff, with some notes in the bass staff. The notes are color-coded: green for whole notes, red for half notes, and purple for quarter notes. The bass staff contains whole rests.



37

Measures 37-40 of the musical score. The system consists of a grand staff with a treble clef and a bass clef. The treble staff has a red line and a green line. The bass staff has a blue line and an orange line. The music is written in a 2/4 time signature. The first measure (37) features a treble staff with a series of eighth notes and a bass staff with a series of eighth notes. The second measure (38) features a treble staff with a series of eighth notes and a bass staff with a series of eighth notes. The third measure (39) features a treble staff with a series of eighth notes and a bass staff with a series of eighth notes. The fourth measure (40) features a treble staff with a series of eighth notes and a bass staff with a series of eighth notes.

40

Measures 41-43 of the musical score. The system consists of a grand staff with a treble clef and a bass clef. The treble staff has a red line and a green line. The bass staff has a blue line and an orange line. The music is written in a 2/4 time signature. The first measure (41) features a treble staff with a series of eighth notes and a bass staff with a series of eighth notes. The second measure (42) features a treble staff with a series of eighth notes and a bass staff with a series of eighth notes. The third measure (43) features a treble staff with a series of eighth notes and a bass staff with a series of eighth notes.

43

Measures 44-46 of the musical score. The system consists of a grand staff with a treble clef and a bass clef. The treble staff has a red line and a green line. The bass staff has a blue line and an orange line. The music is written in a 2/4 time signature. The first measure (44) features a treble staff with a series of eighth notes and a bass staff with a series of eighth notes. The second measure (45) features a treble staff with a series of eighth notes and a bass staff with a series of eighth notes. The third measure (46) features a treble staff with a series of eighth notes and a bass staff with a series of eighth notes.

47

Measures 47-50 of the musical score. The system consists of a grand staff with a treble clef and a bass clef. The treble staff has a red line and a green line. The bass staff has a blue line and an orange line. The music is written in a 2/4 time signature. The first measure (47) features a treble staff with a series of eighth notes and a bass staff with a series of eighth notes. The second measure (48) features a treble staff with a series of eighth notes and a bass staff with a series of eighth notes. The third measure (49) features a treble staff with a series of eighth notes and a bass staff with a series of eighth notes. The fourth measure (50) features a treble staff with a series of eighth notes and a bass staff with a series of eighth notes.

51

Measures 51-54 of the piece. The right hand (treble clef) features a series of ascending and descending eighth-note runs, with some notes highlighted in green. The left hand (bass clef) provides a steady accompaniment with eighth notes, with some notes highlighted in blue and orange.

55

Measures 55-58. The right hand continues with eighth-note runs, including a measure with a whole rest. The left hand maintains the accompaniment pattern with eighth notes, featuring blue and orange highlights.

59

Measures 59-62. The right hand shows more complex eighth-note patterns. The left hand's accompaniment includes some sixteenth-note passages, with blue and orange highlights.

63

Measures 63-66. The right hand features a mix of eighth and sixteenth notes. The left hand continues with the accompaniment, including some sixteenth-note runs, with blue and orange highlights.

67

Measures 67-70. Treble clef has red notes, bass clef has blue notes. Measure 67 has an orange line under the bass staff. Measure 69 has an orange line under the bass staff. Measure 70 has an orange line under the bass staff.

71

Measures 71-74. Treble clef has green notes, bass clef has blue notes. Measure 71 has a green line under the treble staff. Measure 72 has a green line under the treble staff. Measure 73 has a green line under the treble staff. Measure 74 has a green line under the treble staff.

75

Measures 75-78. Treble clef has green notes, bass clef has blue notes. Measure 75 has a green line under the treble staff. Measure 76 has a green line under the treble staff. Measure 77 has a green line under the treble staff. Measure 78 has a green line under the treble staff.

79

Measures 79-82. Treble clef has green notes, bass clef has blue notes. Measure 79 has a green line under the treble staff. Measure 80 has a green line under the treble staff. Measure 81 has a green line under the treble staff. Measure 82 has a green line under the treble staff.

83

86

90

94

98

102

106

110

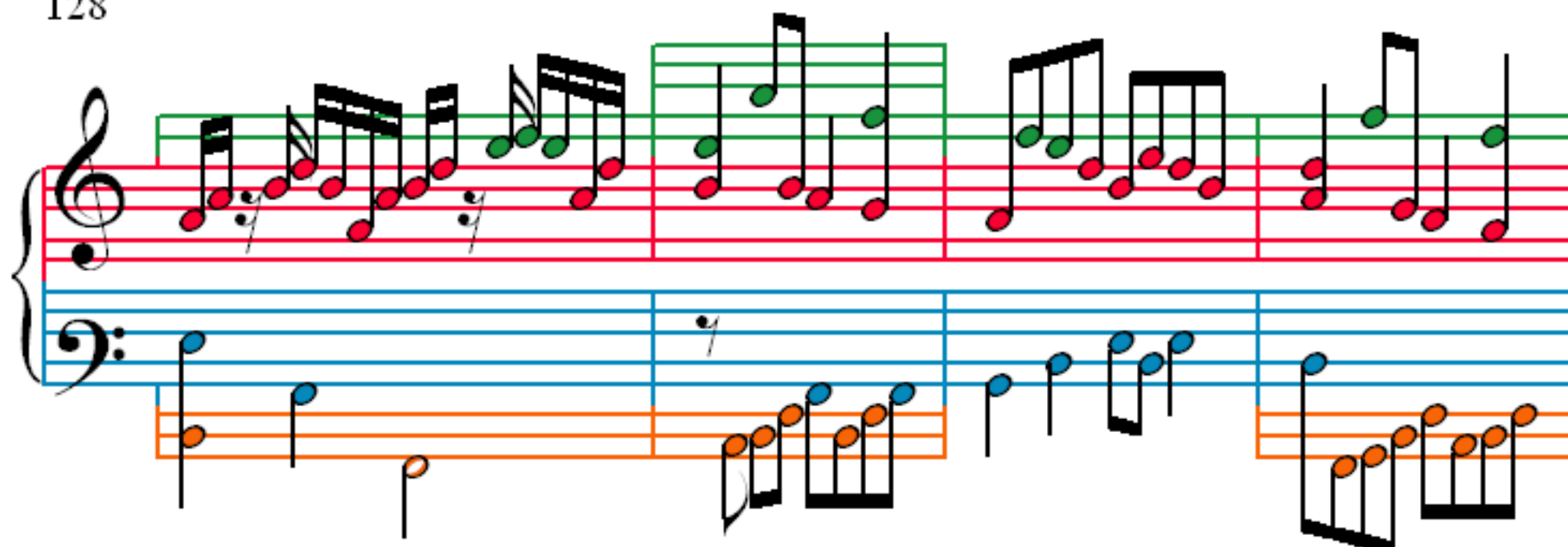
114

118

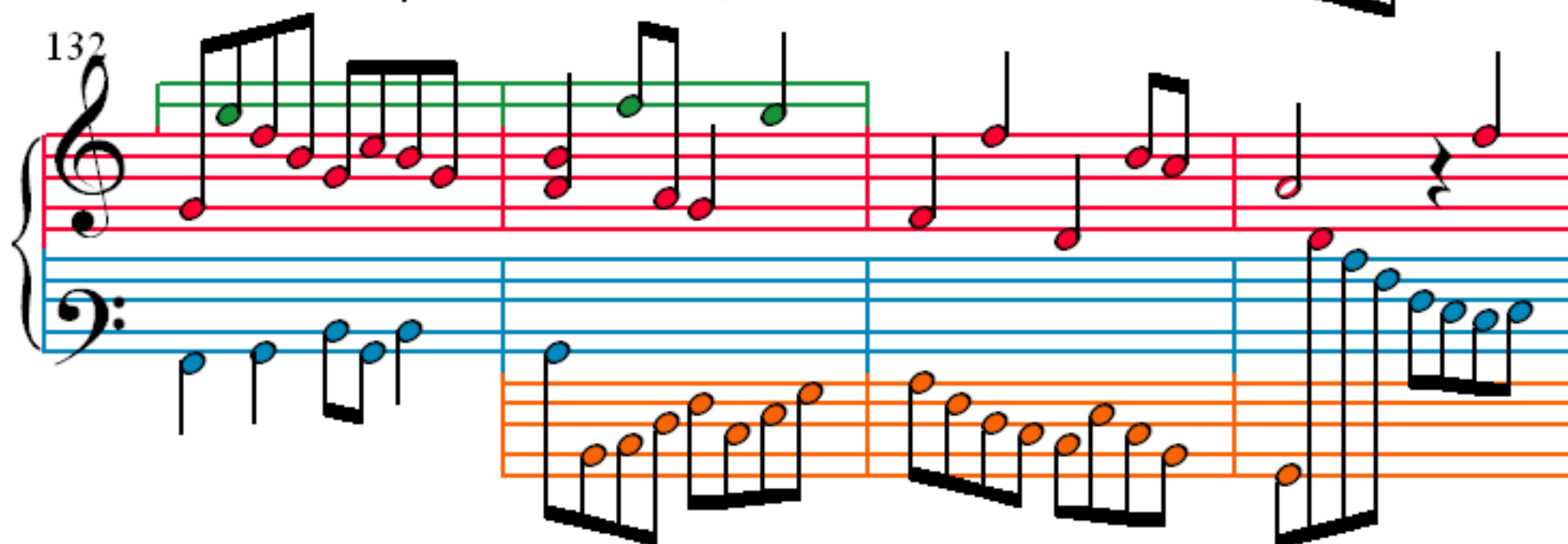
122

125

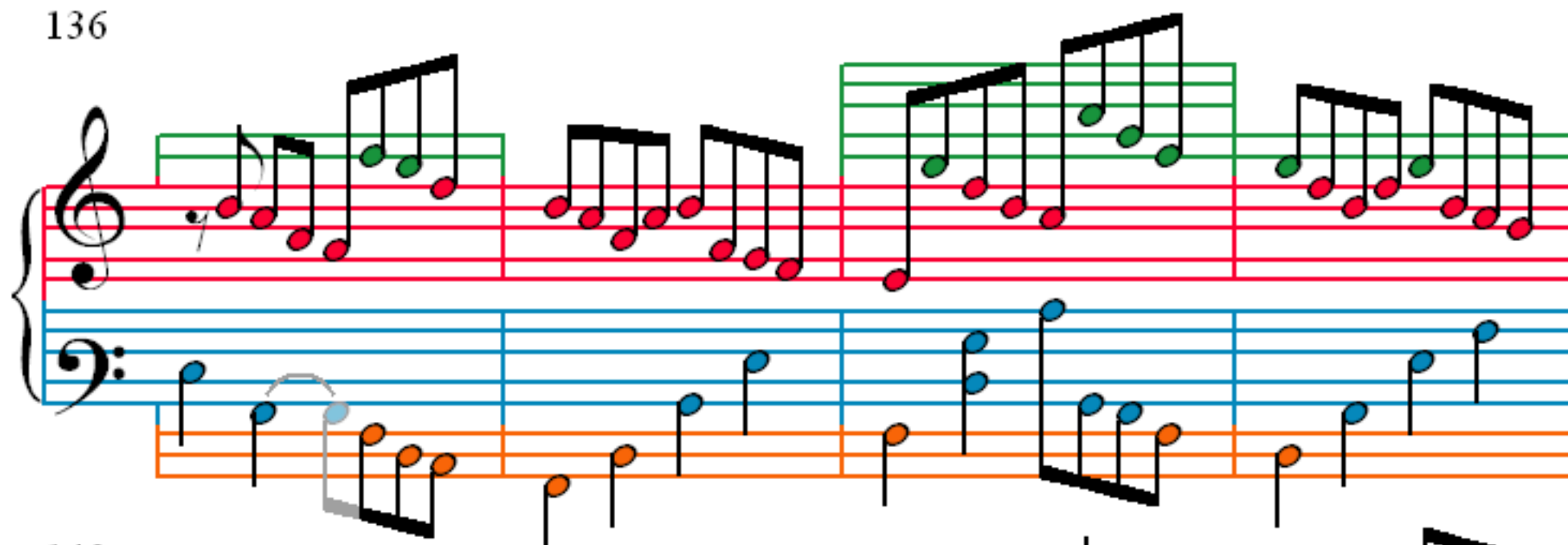
128



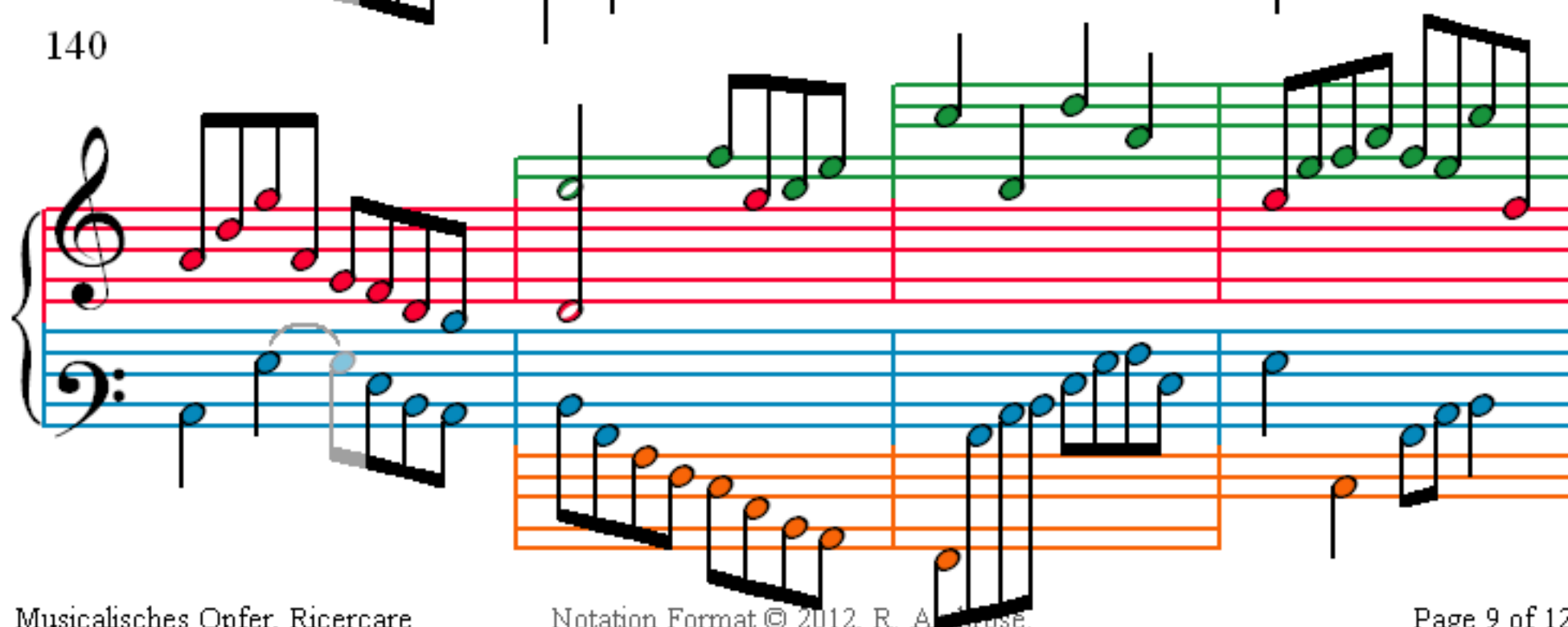
132



136



140



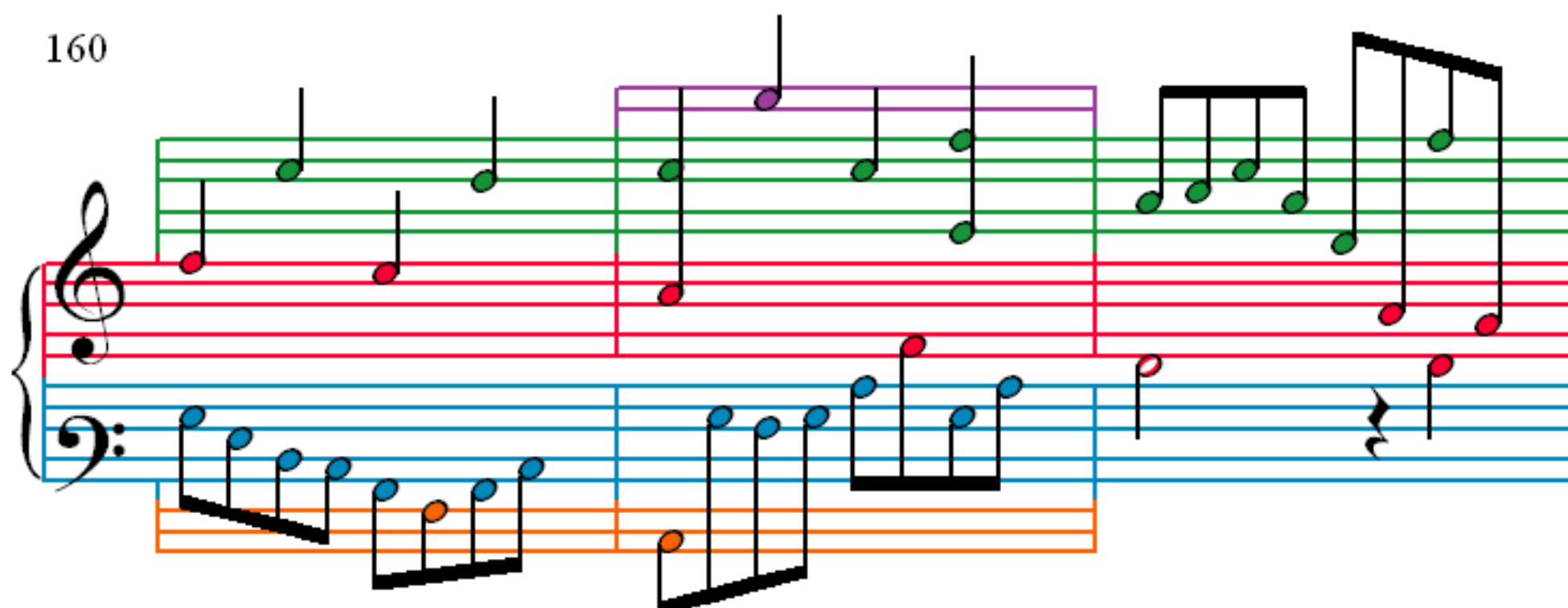
144

148

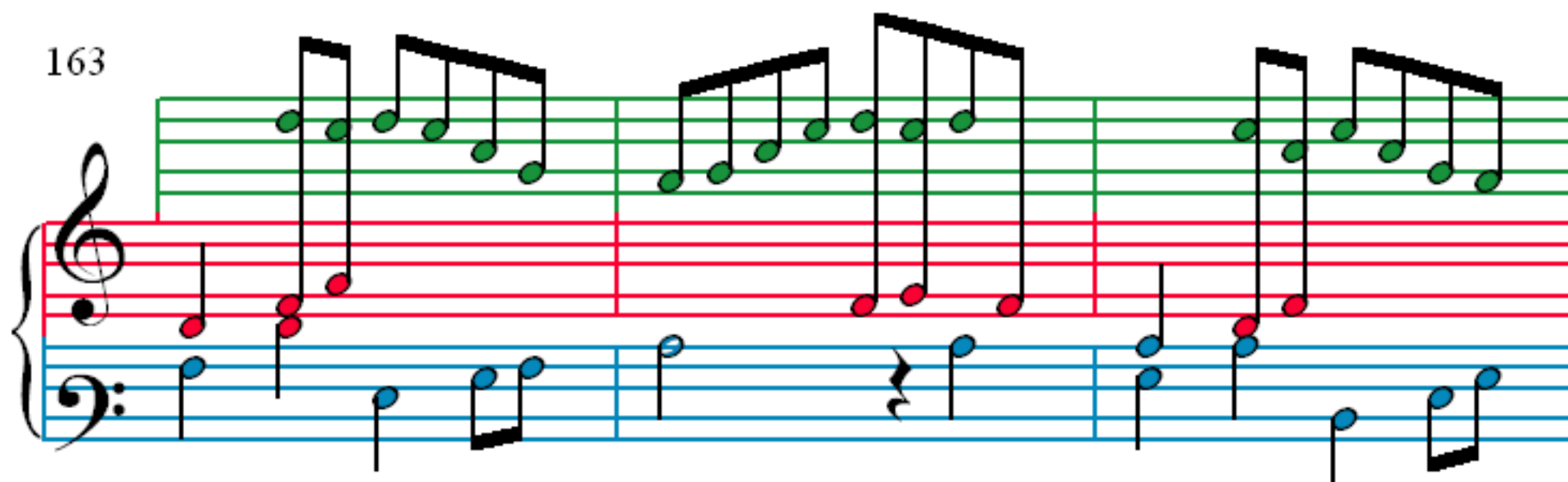
152

156

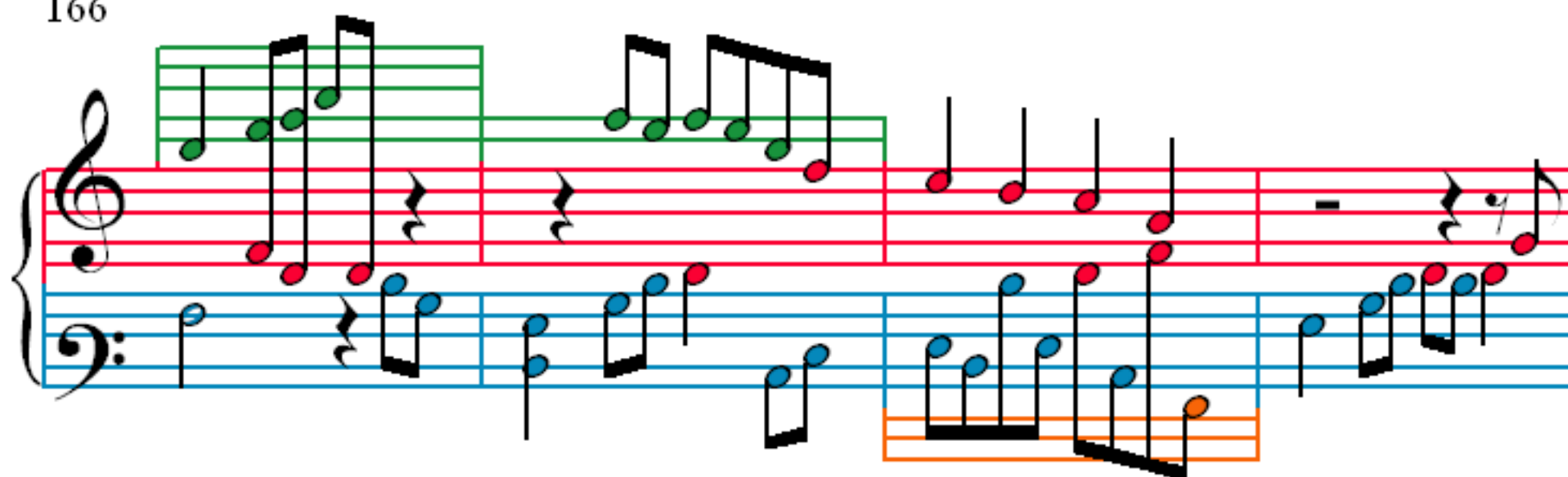
160



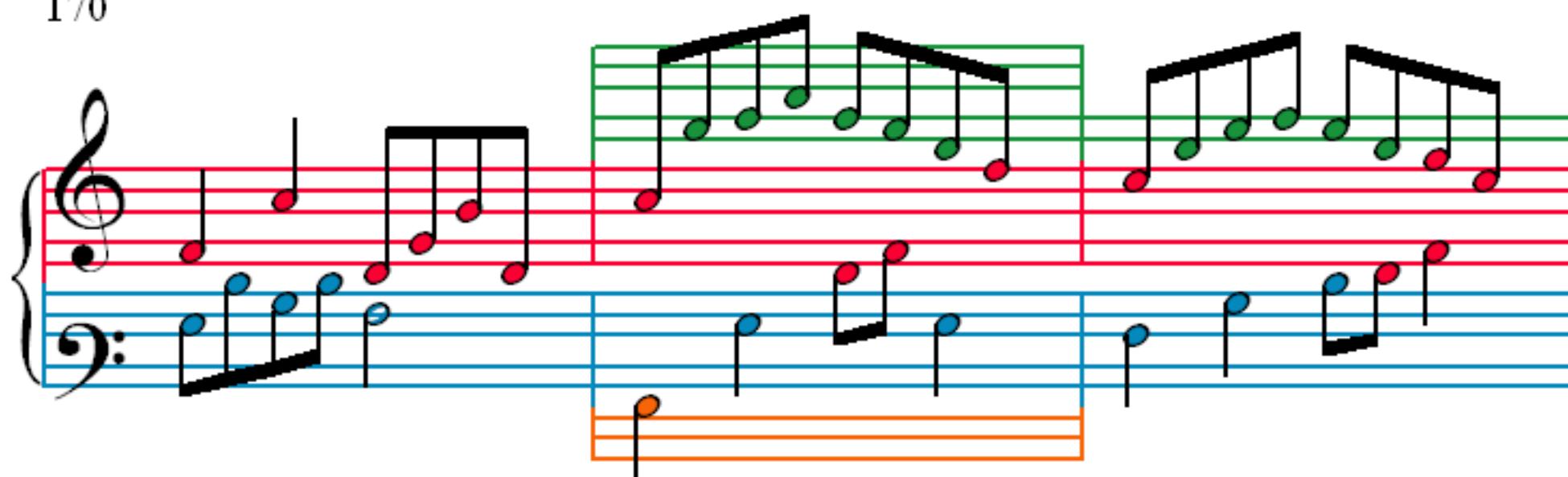
163



166



170



173

Measures 173-175. Treble clef: red notes (half, quarter, eighth, sixteenth), green notes (quarter, eighth, sixteenth). Bass clef: blue notes (half, quarter, eighth, sixteenth). Measure 175 includes an orange staff below the bass line.

176

Measures 176-178. Treble clef: red notes (half, quarter, eighth, sixteenth), green notes (quarter, eighth, sixteenth). Bass clef: blue notes (half, quarter, eighth, sixteenth). Measure 178 includes a grey note in the treble.

179

Measures 179-181. Treble clef: green notes (half, quarter, eighth, sixteenth), purple notes (quarter, eighth, sixteenth). Bass clef: blue notes (half, quarter, eighth, sixteenth). Measure 181 includes an orange staff below the bass line.

182

Measures 182-184. Treble clef: red notes (half, quarter, eighth, sixteenth), green notes (quarter, eighth, sixteenth). Bass clef: blue notes (half, quarter, eighth, sixteenth). Measure 184 includes an orange staff below the bass line.