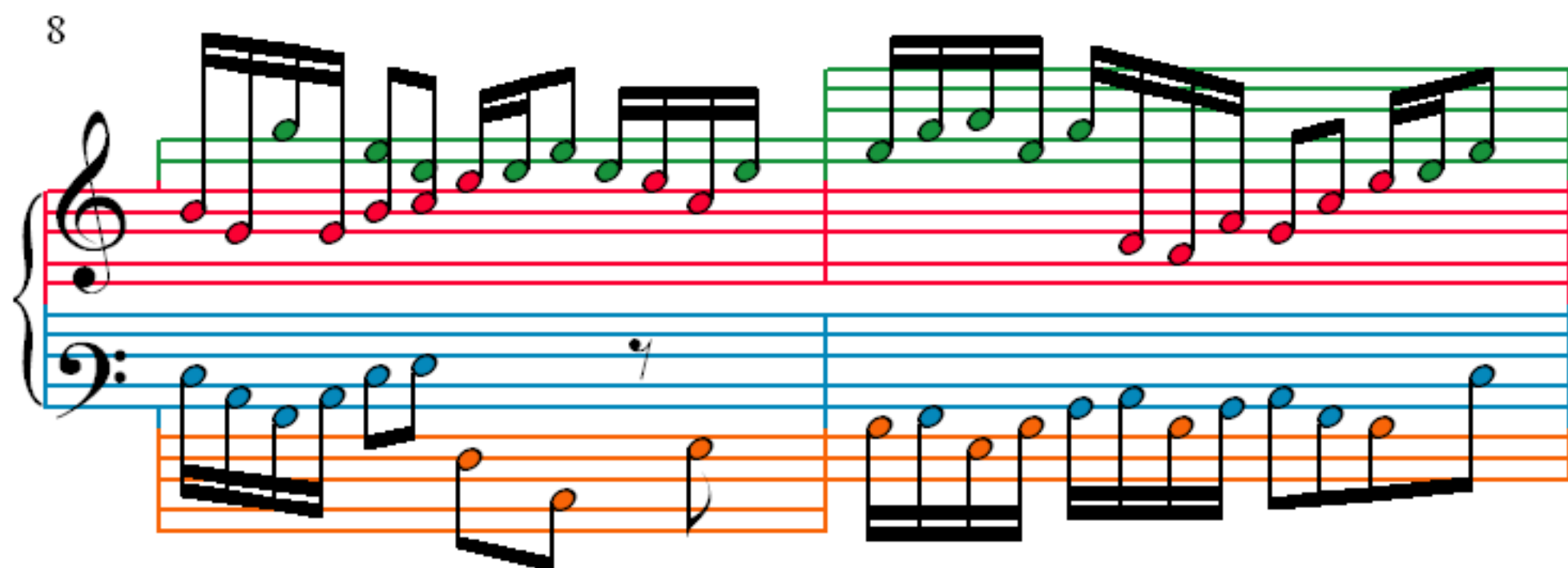
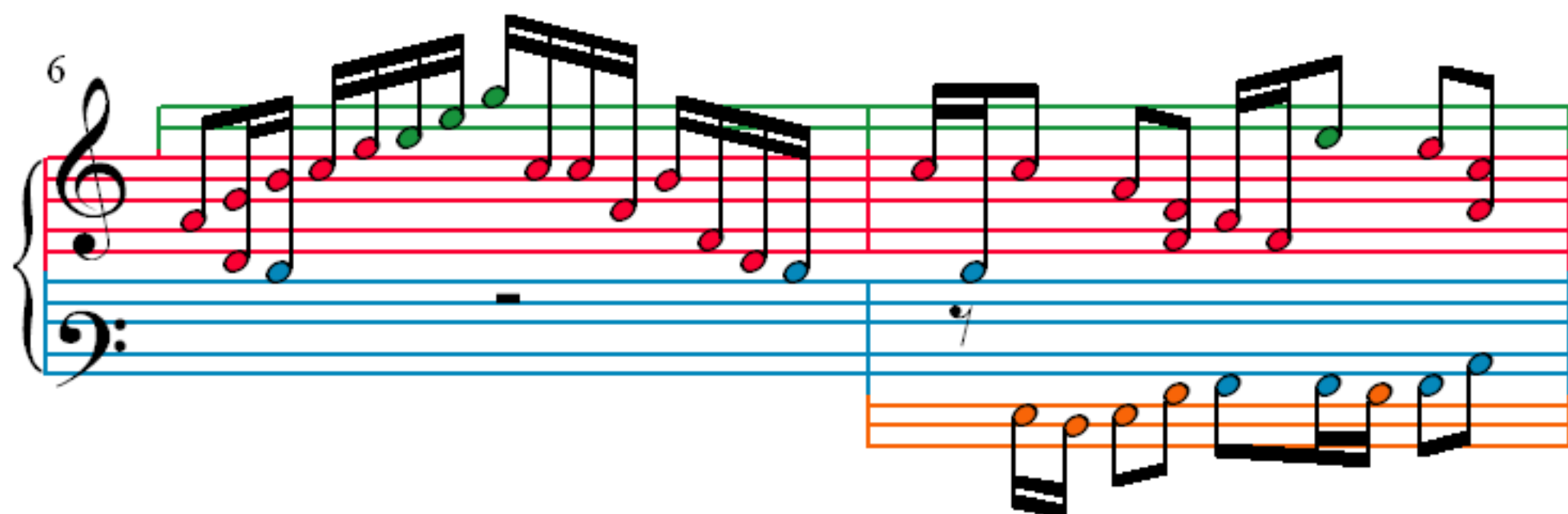
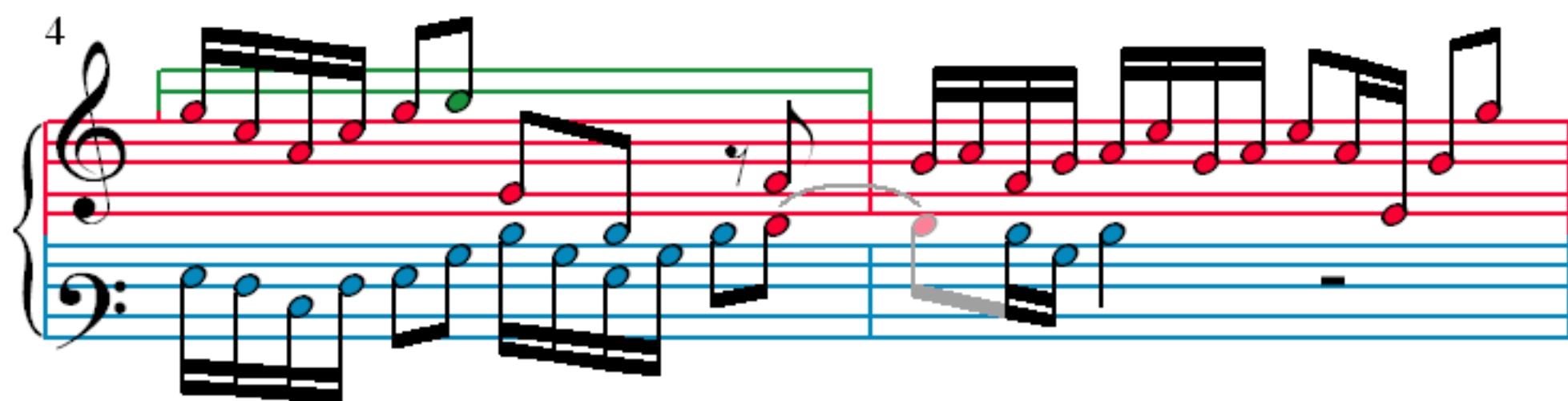


# Das Wohltemperierte Clavier I, Fuga XX

BWV 865

J. S. Bach (1685–1750)



10

11

12

13

14

15

16

17

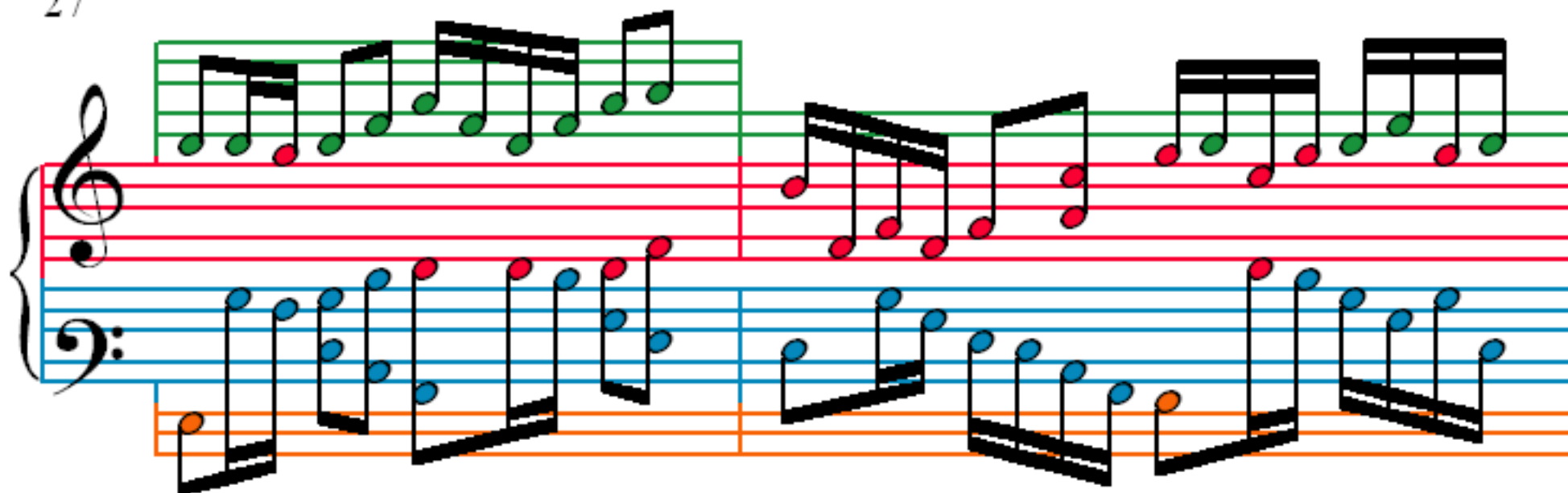
19

21

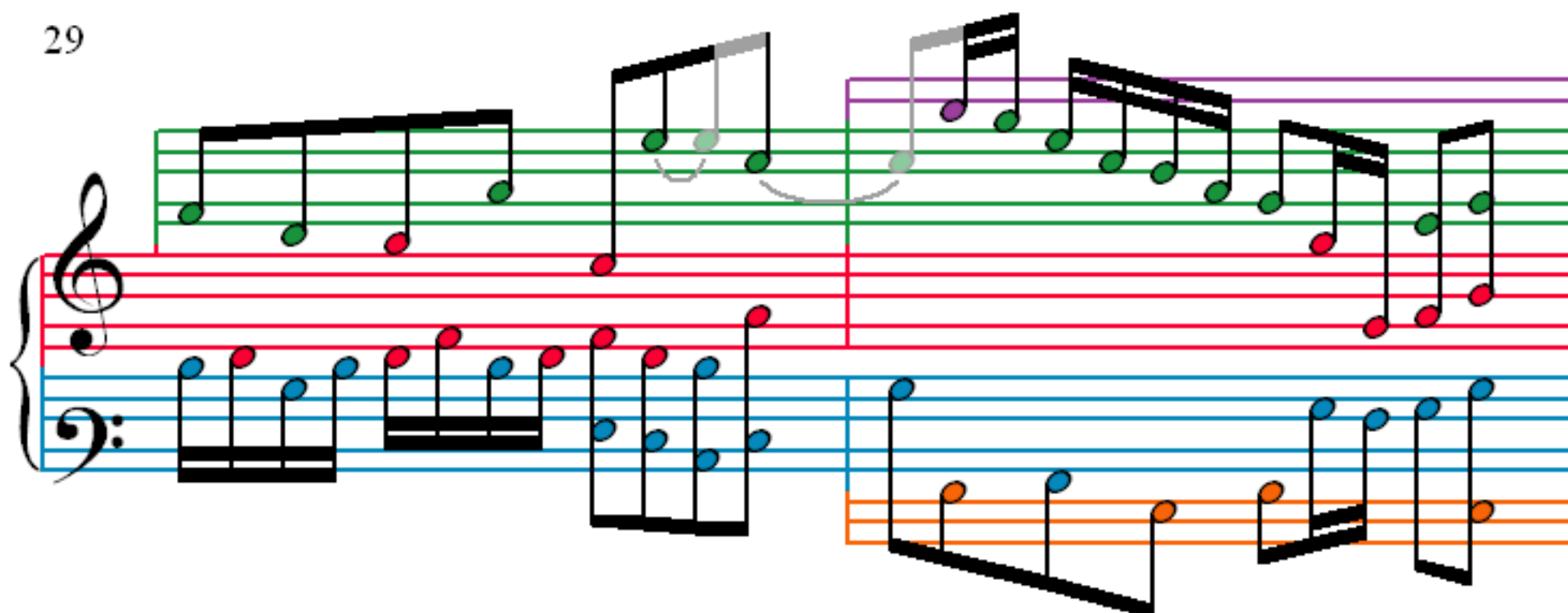
23

25

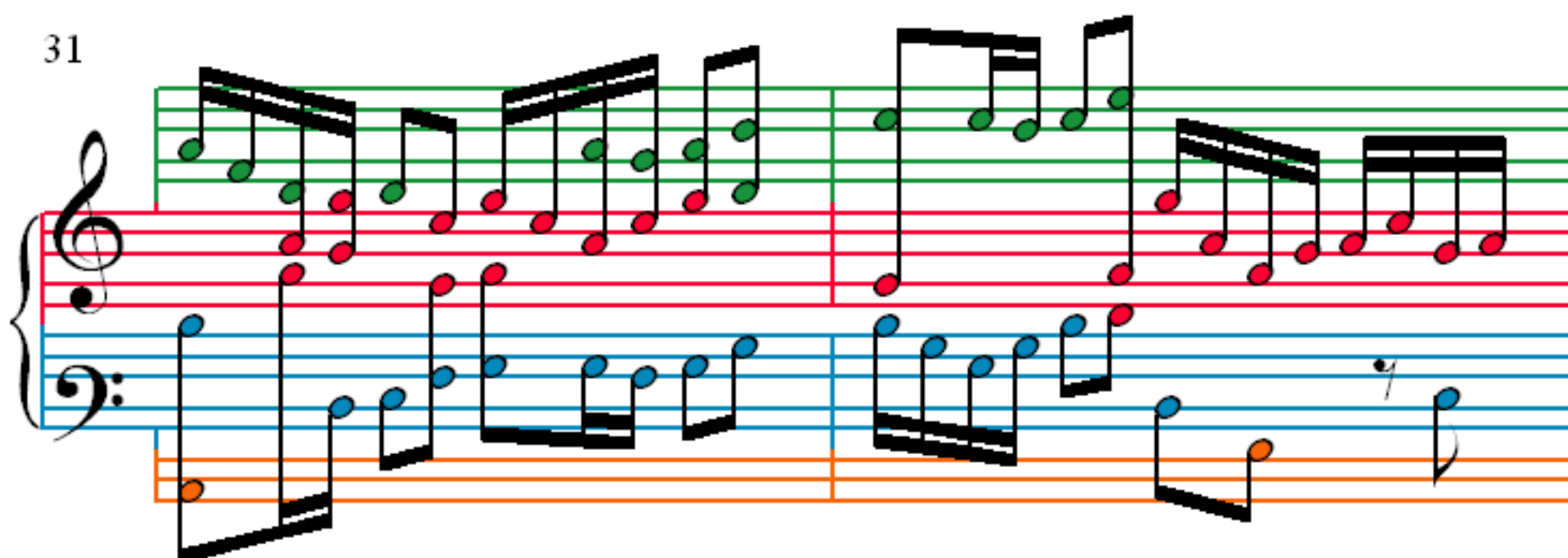
27



29



31



33

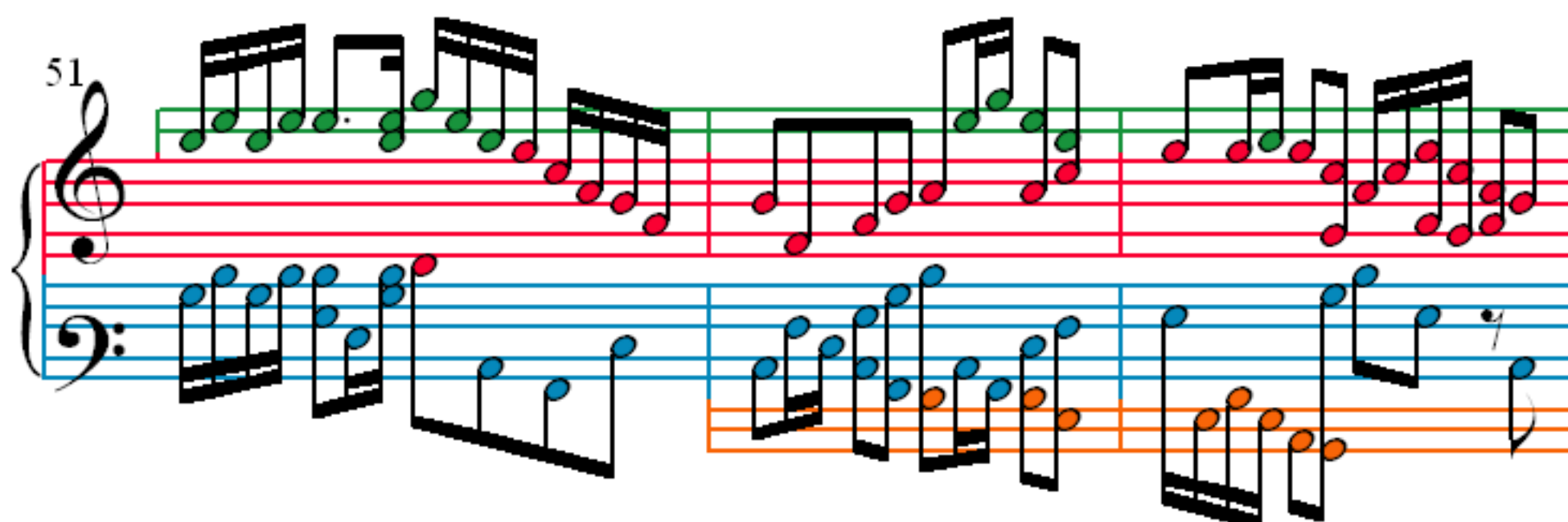
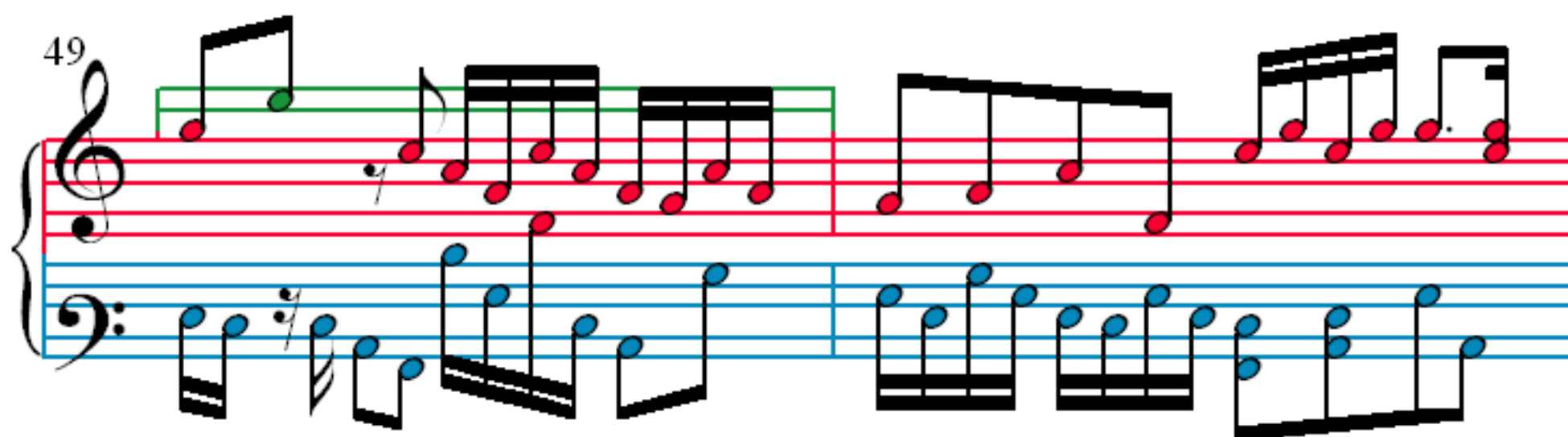
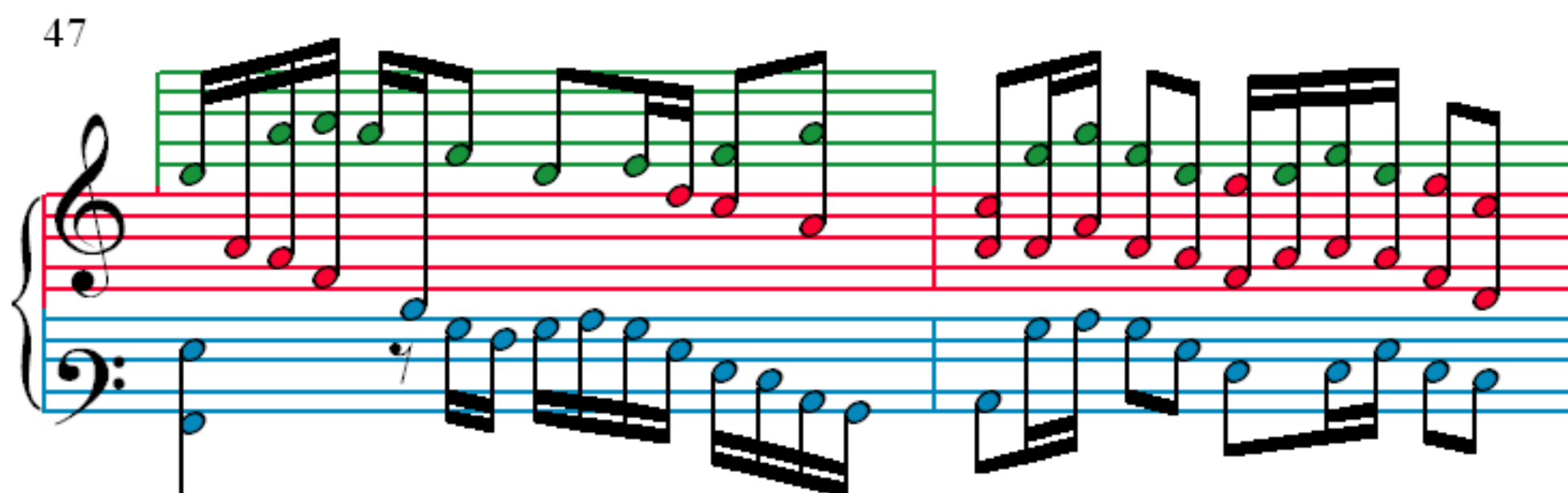
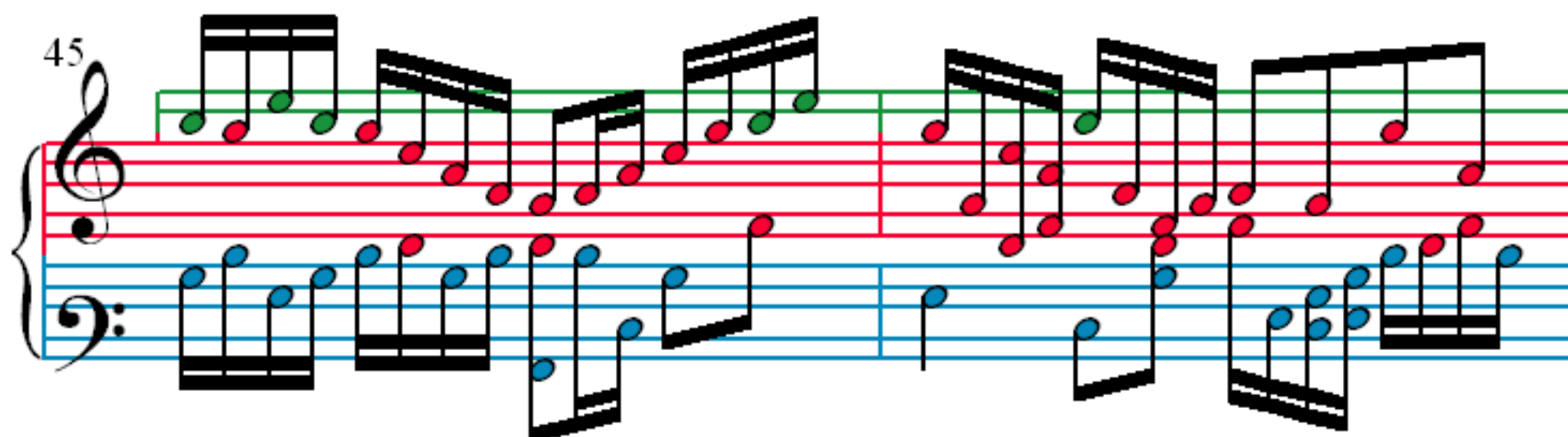


36

38

41

43



54

56

58

60

62

63

64

65

67

68

69

70

71

Measures 71 and 72 of Fuga XX. The notation is presented in a three-staff system. The top staff (treble clef) contains a melodic line with green and red notes. The middle staff (treble clef) contains a melodic line with red notes. The bottom staff (bass clef) contains a melodic line with blue and orange notes. The measures are separated by a vertical bar line.

73

Measures 73 and 74 of Fuga XX. The notation is presented in a three-staff system. The top staff (treble clef) contains a melodic line with green and red notes. The middle staff (treble clef) contains a melodic line with red notes. The bottom staff (bass clef) contains a melodic line with blue and orange notes. The measures are separated by a vertical bar line.

75

Measures 75 and 76 of Fuga XX. The notation is presented in a three-staff system. The top staff (treble clef) contains a melodic line with green and red notes. The middle staff (treble clef) contains a melodic line with red notes. The bottom staff (bass clef) contains a melodic line with blue and orange notes. The measures are separated by a vertical bar line.

77

Measures 77 and 78 of Fuga XX. The notation is presented in a three-staff system. The top staff (treble clef) contains a melodic line with green and red notes. The middle staff (treble clef) contains a melodic line with red notes. The bottom staff (bass clef) contains a melodic line with blue and orange notes. The measures are separated by a vertical bar line.

79

81

83

85