

# Das Wohltemperierte Clavier I, Praeludium

BWV 855

J. S. Bach (1685–1750)

1

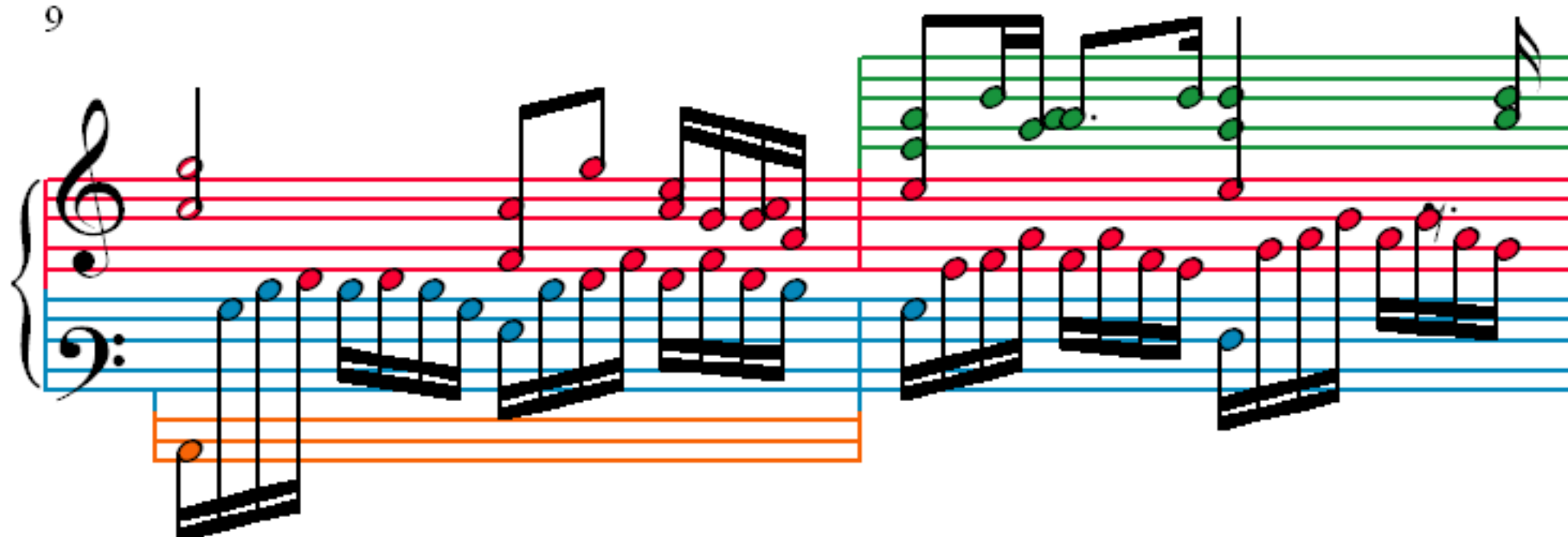
3

5

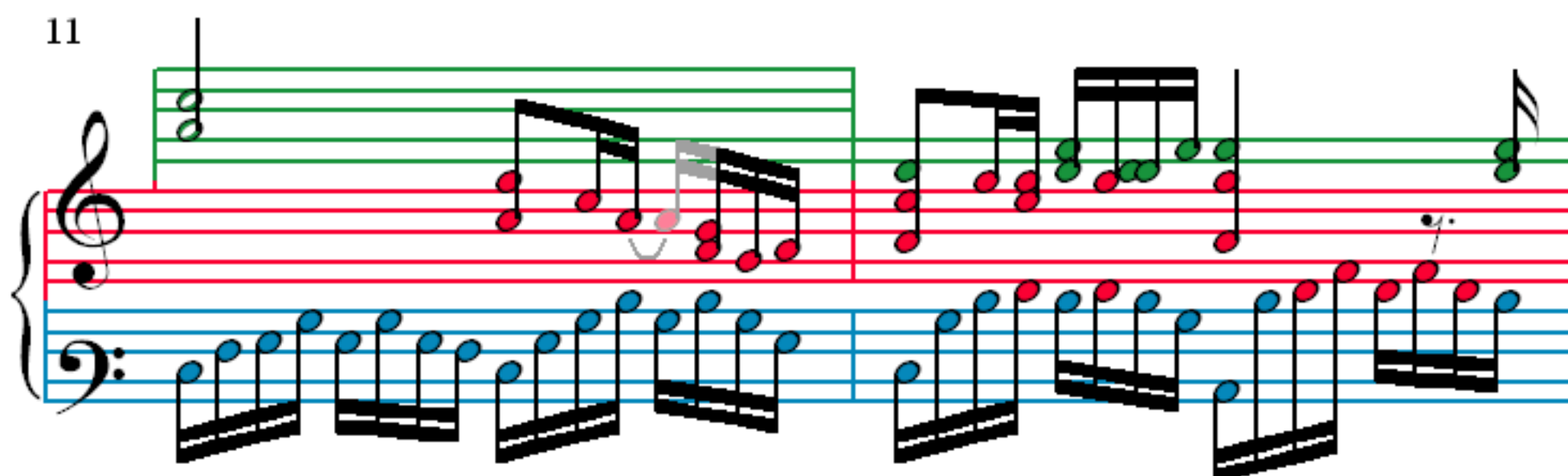
7

The image displays the first eight measures of the Praeludium from the first book of J.S. Bach's Well-Tempered Clavier. The notation is presented in a system of four staves, each containing a grand staff (treble and bass clef). The first staff (measures 1-2) features a treble staff with a key signature of one sharp (F#) and a 4/4 time signature, and a bass staff with a continuous eighth-note pattern. The second staff (measures 3-4) continues the bass staff pattern and introduces a treble staff with a continuous eighth-note pattern. The third staff (measures 5-6) continues both patterns. The fourth staff (measures 7-8) continues both patterns, with the bass staff featuring a continuous eighth-note pattern and the treble staff featuring a continuous eighth-note pattern. The notation is color-coded: red for the first staff, blue for the second, green for the third, and orange for the fourth. The notes are also color-coded: red for the first staff, blue for the second, green for the third, and orange for the fourth.

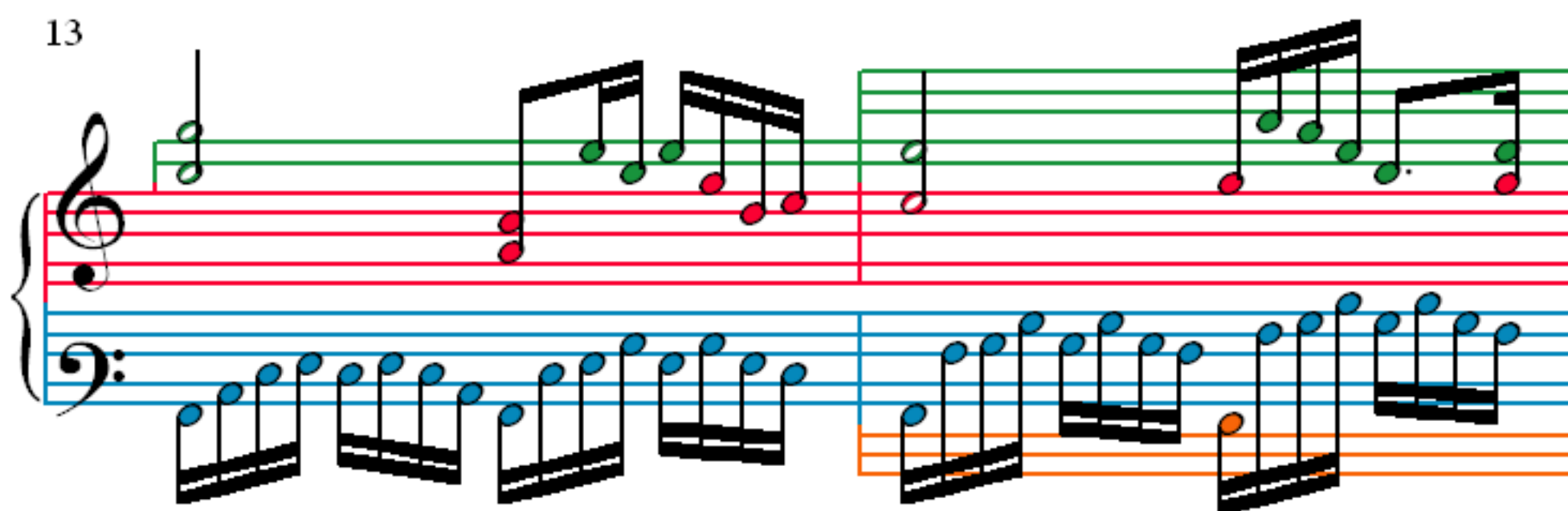
9



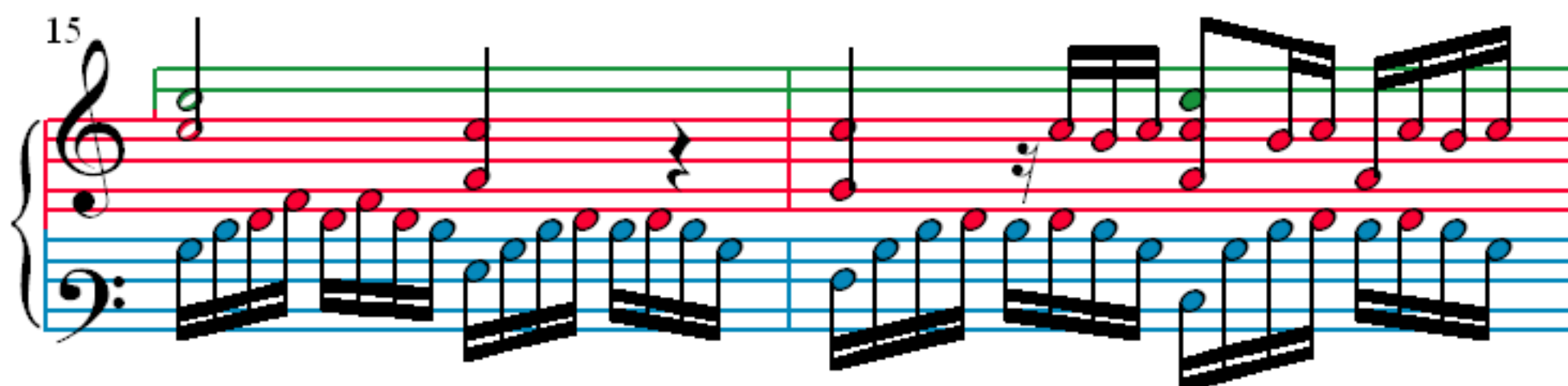
11



13



15



17

Measures 17-18. The right hand (treble clef) has a green line above the staff. The left hand (bass clef) has a blue line above the staff. The music consists of eighth and sixteenth notes.

19

Measures 19-20. The right hand (treble clef) has a purple line above the staff. The left hand (bass clef) has a blue line above the staff. The music consists of eighth and sixteenth notes.

21

Measures 21-22. The right hand (treble clef) has a green line above the staff. The left hand (bass clef) has a blue line above the staff. The music consists of eighth and sixteenth notes.

23

Measures 23-24. The right hand (treble clef) has a purple line above the staff. The left hand (bass clef) has a blue line above the staff. The music consists of eighth and sixteenth notes.

25

Measures 25-26. Treble clef: Measure 25 has four groups of beamed eighth notes (green and red). Measure 26 has four groups of beamed eighth notes (green and red). Bass clef: Measure 25 has four groups of beamed eighth notes (blue and red). Measure 26 has four groups of beamed eighth notes (blue and red).

27

Measures 27-28. Treble clef: Measure 27 has four groups of beamed eighth notes (green and red). Measure 28 has four groups of beamed eighth notes (green and red). Bass clef: Measure 27 has four groups of beamed eighth notes (blue and red). Measure 28 has four groups of beamed eighth notes (blue and red).

29

Measures 29-30. Treble clef: Measure 29 has four groups of beamed eighth notes (green and red). Measure 30 has two groups of beamed eighth notes (green and red). Bass clef: Measure 29 has four groups of beamed eighth notes (blue and orange). Measure 30 has four groups of beamed eighth notes (blue and orange).

31

Measures 31-32. Treble clef: Measure 31 has four groups of beamed eighth notes (green and red). Measure 32 has four groups of beamed eighth notes (green and red). Bass clef: Measure 31 has four groups of beamed eighth notes (orange and blue). Measure 32 has four groups of beamed eighth notes (orange and blue).

33

35

37

39