

# Six Partitas (Clavierubung part I): No. 5

BWV 829-5

J.S. Bach(1685-1750)

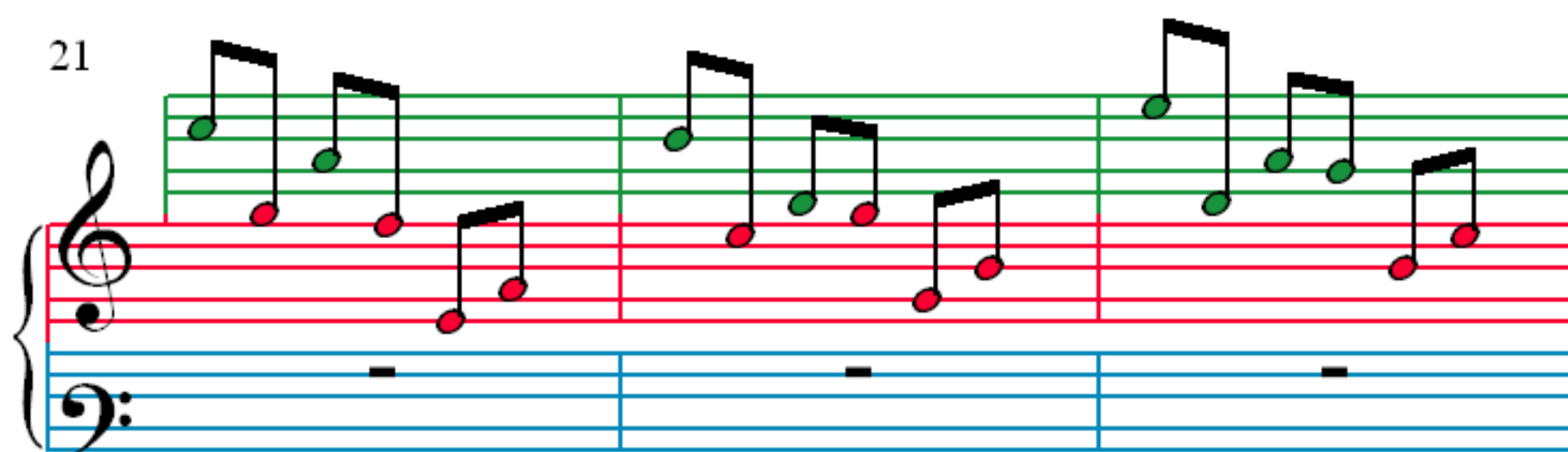
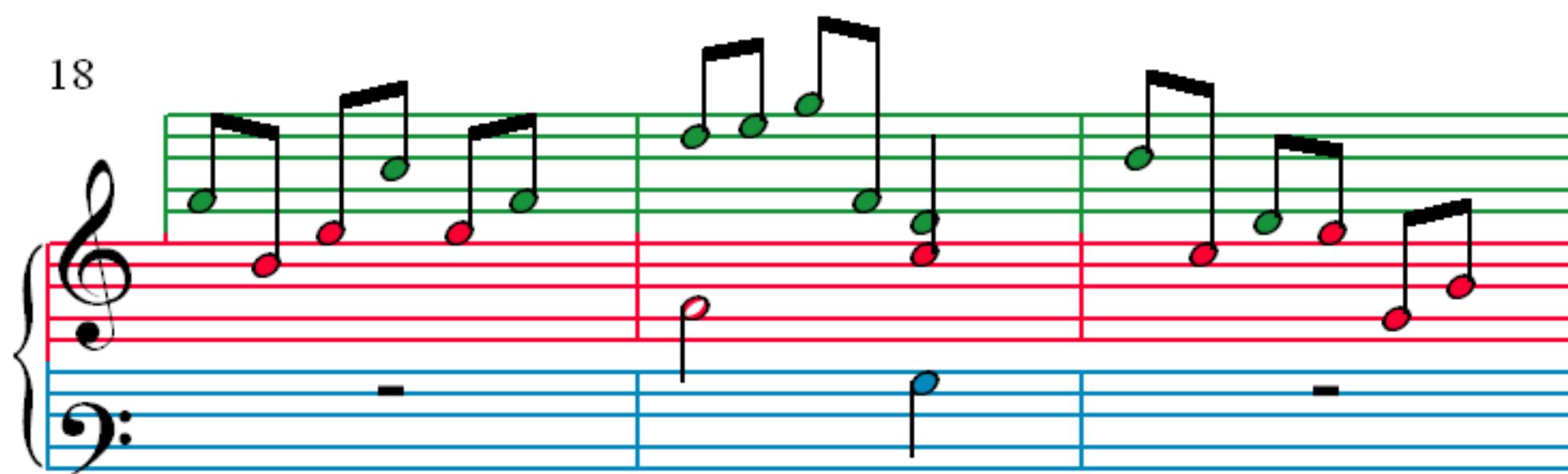
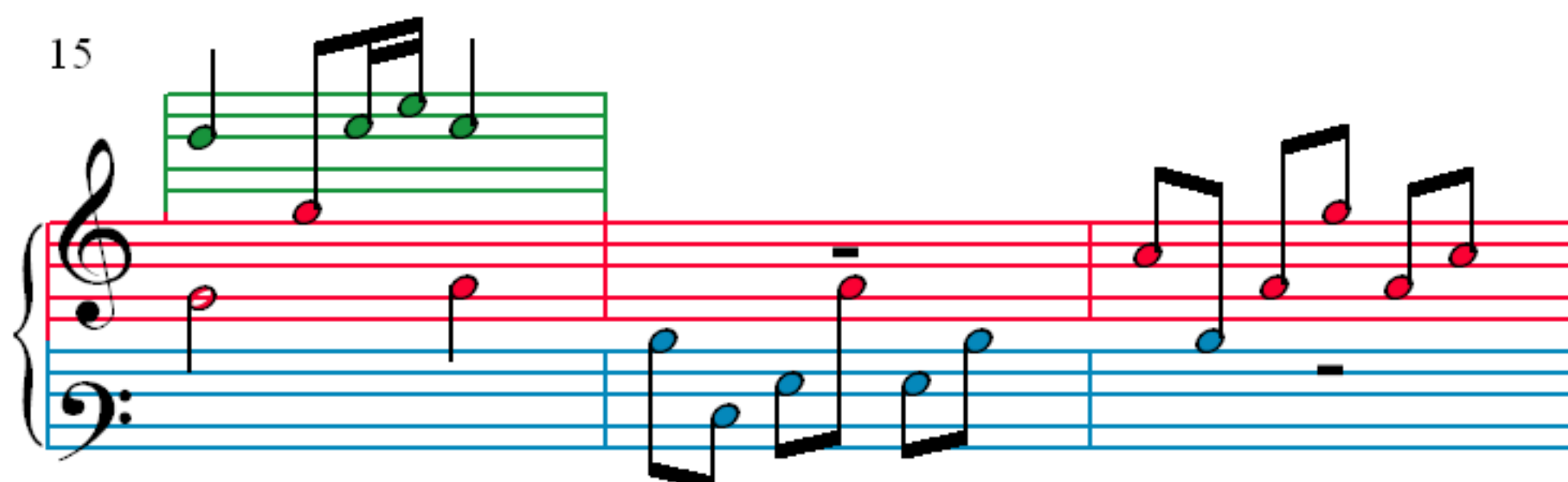
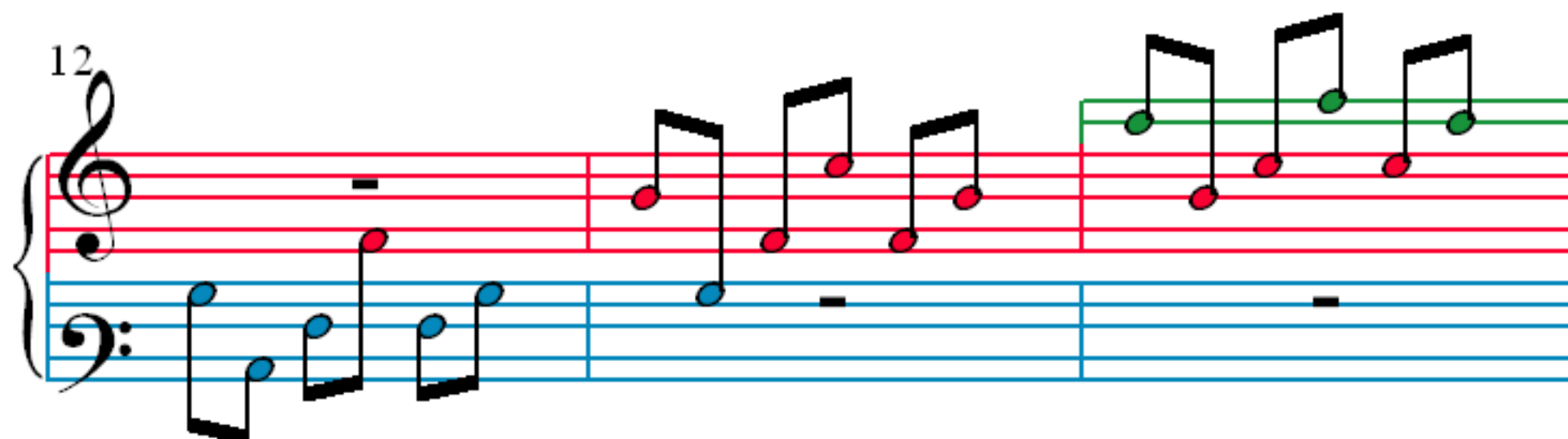
1

3

6

9

Detailed description: The image displays the first 12 measures of the fifth partita from J.S. Bach's Notebook for Anna Bach. The music is written for a single melodic line on a grand staff (treble and bass clefs). The key signature is one flat (B-flat major or D minor), and the time signature is 3/4. The notation is color-coded: red for the first staff, green for the second, and blue for the third. The first system (measures 1-3) begins with a treble clef, a key signature of one flat, and a 3/4 time signature. The second system (measures 4-6) continues the melody. The third system (measures 7-9) shows a continuation of the melodic line. The fourth system (measures 10-12) concludes the first section of the piece.



24

Measures 24-26: Treble clef staff with a green line above it. Notes are red in measures 24 and 25, and green in measure 26. Bass clef staff has whole rests.

27

Measures 27-29: Treble clef staff with a green line above it. Notes are red in measures 27 and 28, and green in measure 29. Bass clef staff has whole rests.

30

Measures 30-32: Treble clef staff with a green line above it. Notes are red in measures 30 and 31, and green in measure 32. Bass clef staff has notes in measures 30 and 31, and a whole rest in measure 32.

33

Measures 33-35: Treble clef staff with a green line above it. Notes are red in measures 33 and 34, and green in measure 35. Bass clef staff has notes in measures 33 and 34, and a whole rest in measure 35.

