

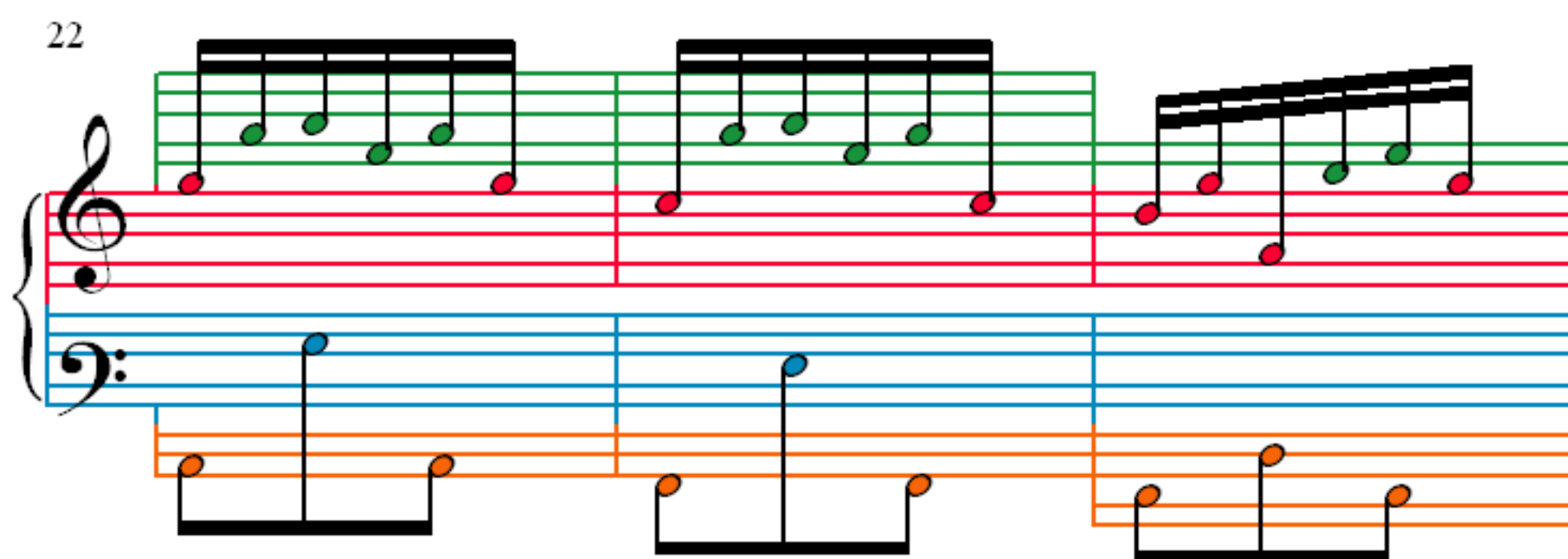
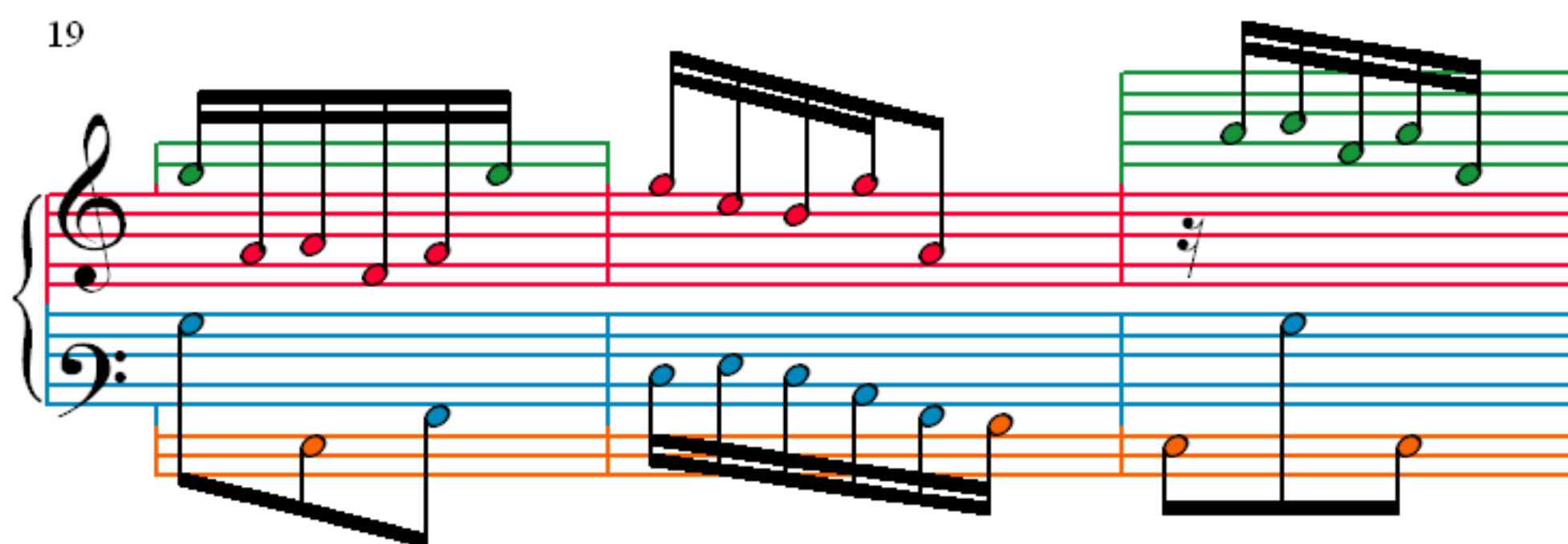
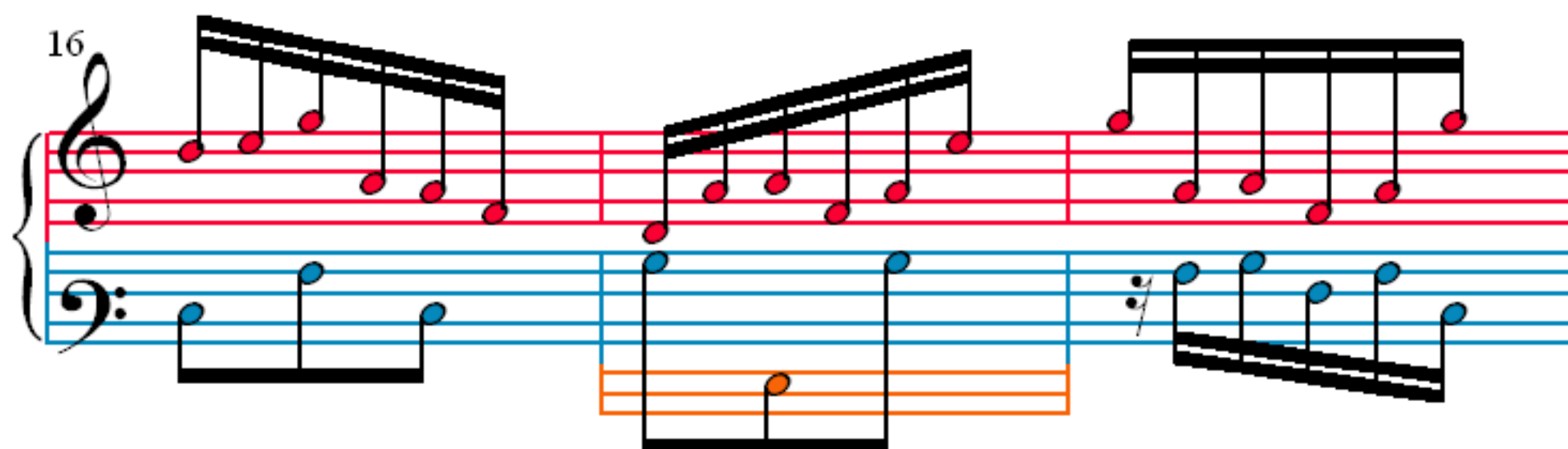
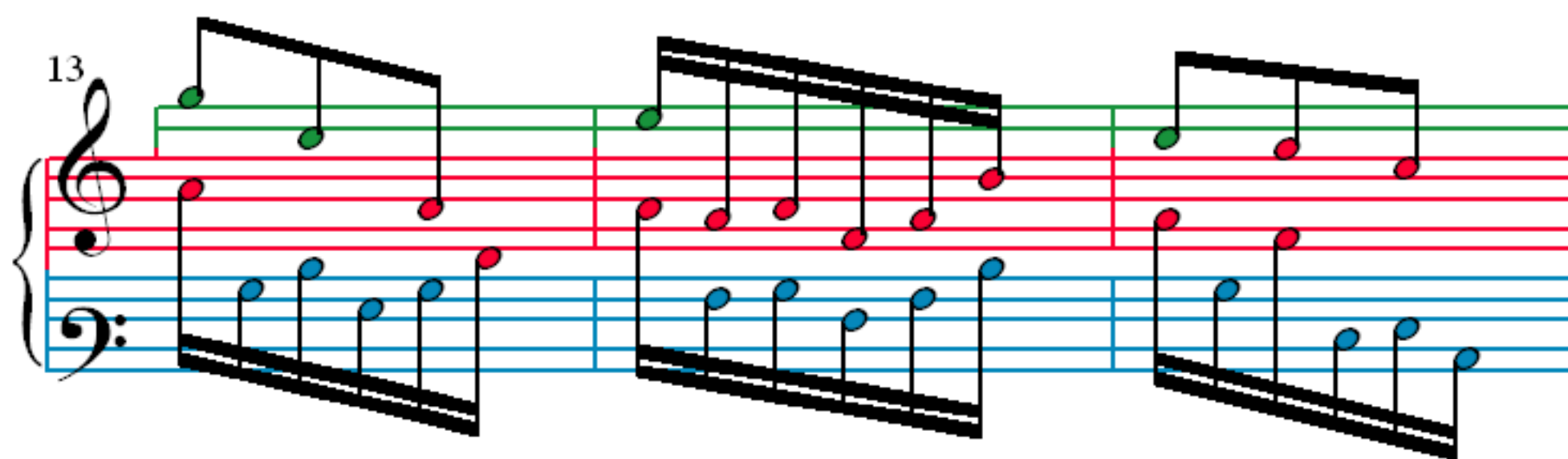
J.S.Bach(1685-1750)

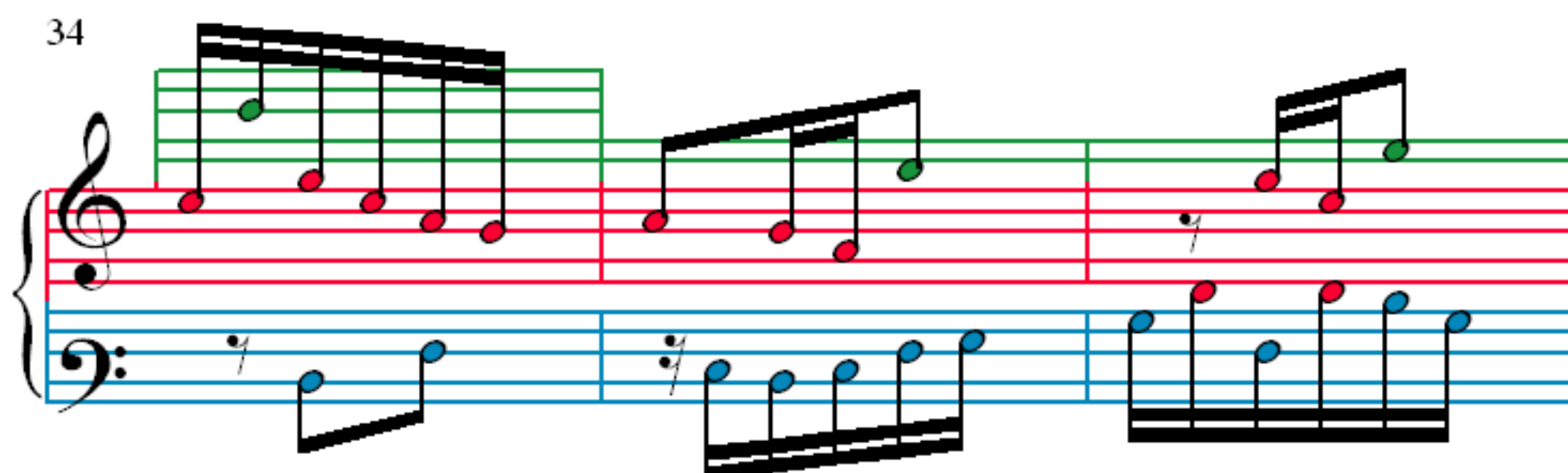
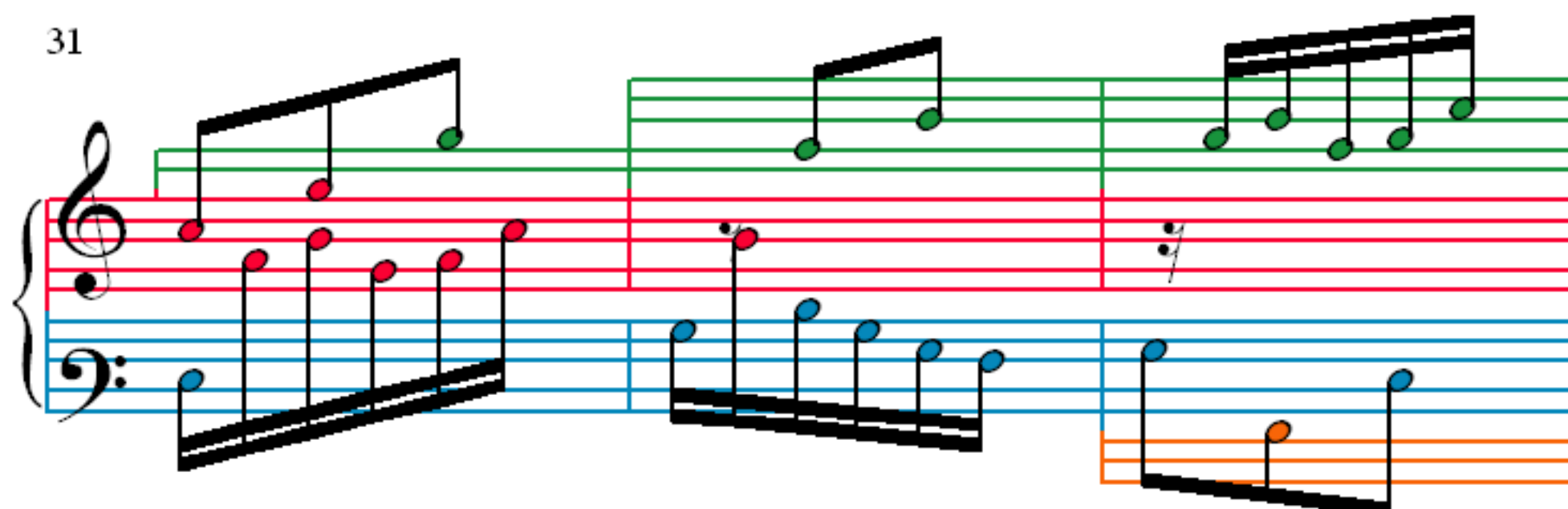
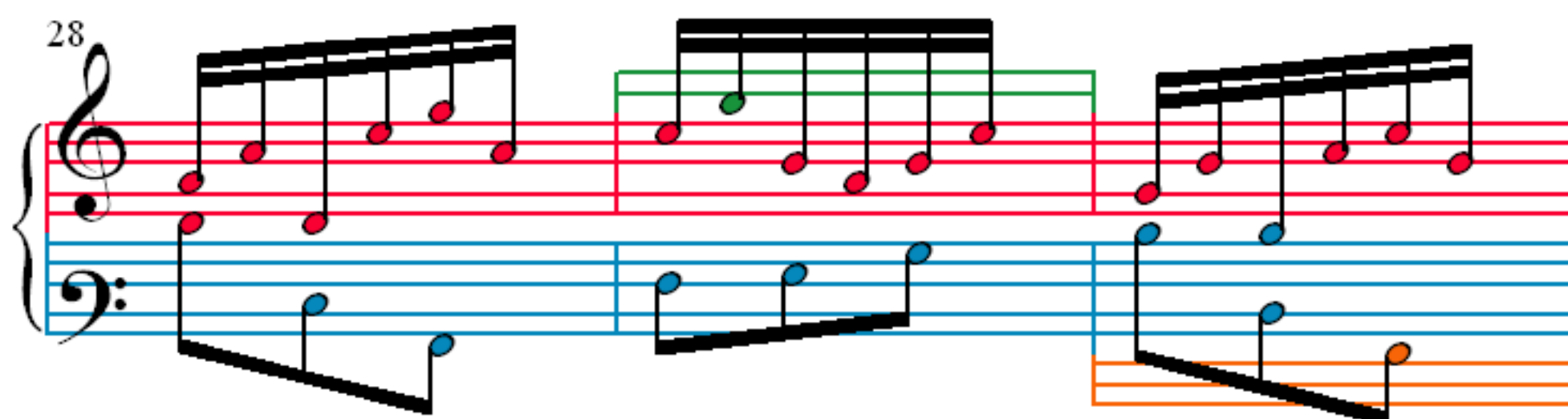
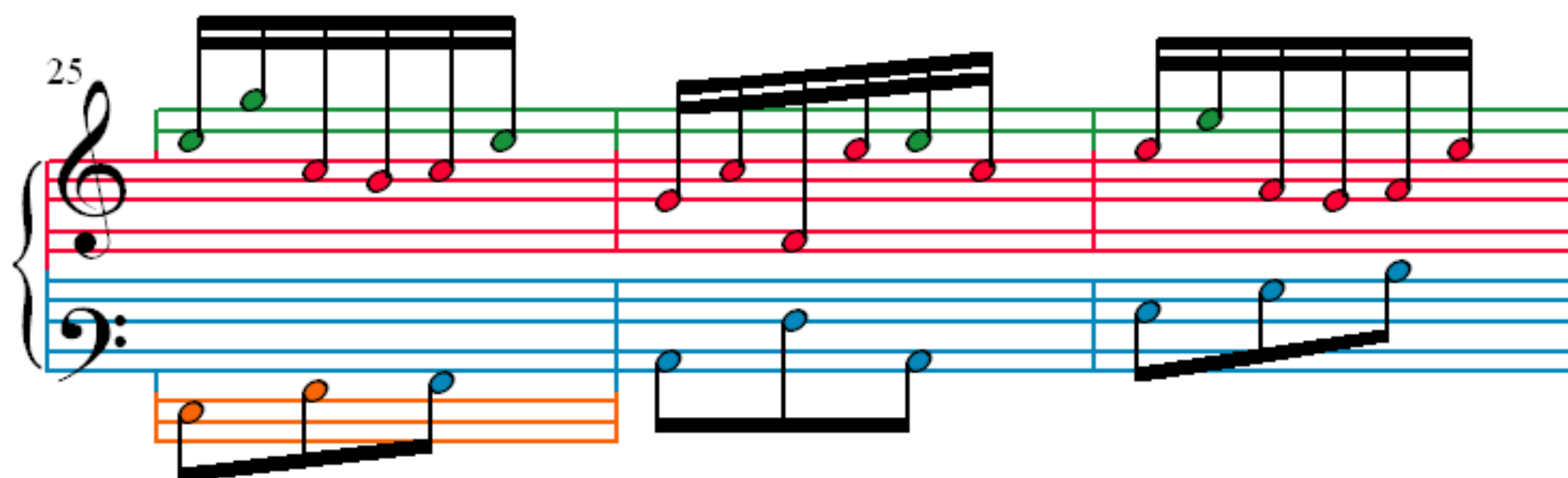
1

4

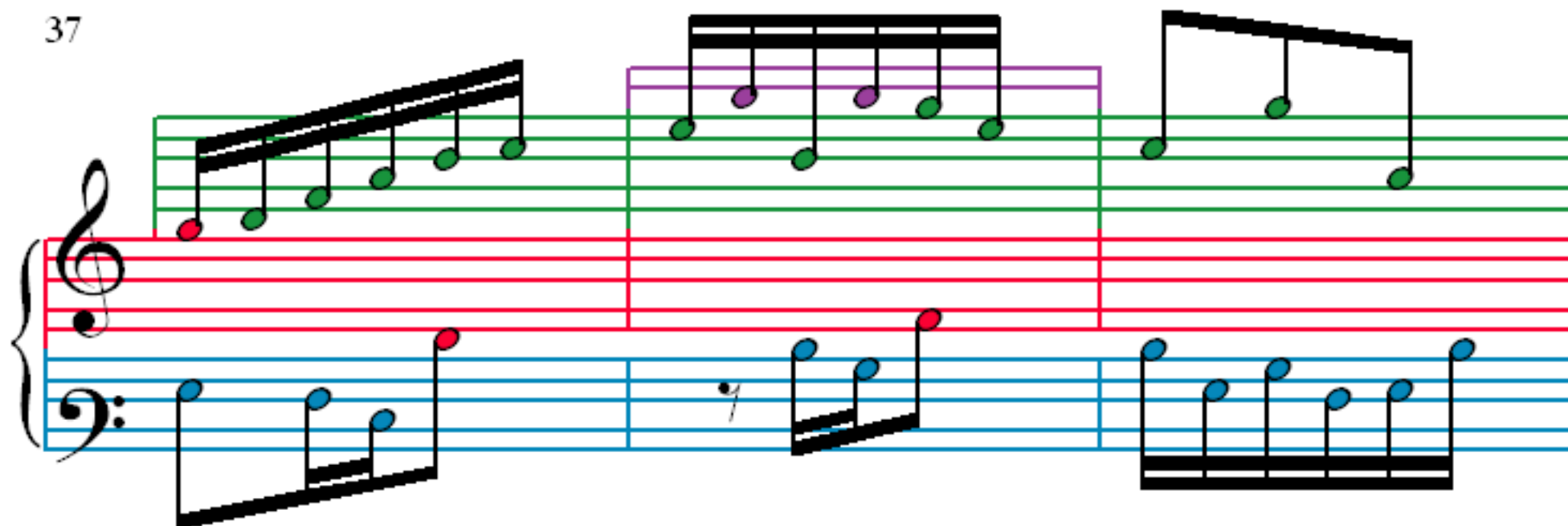
7

10

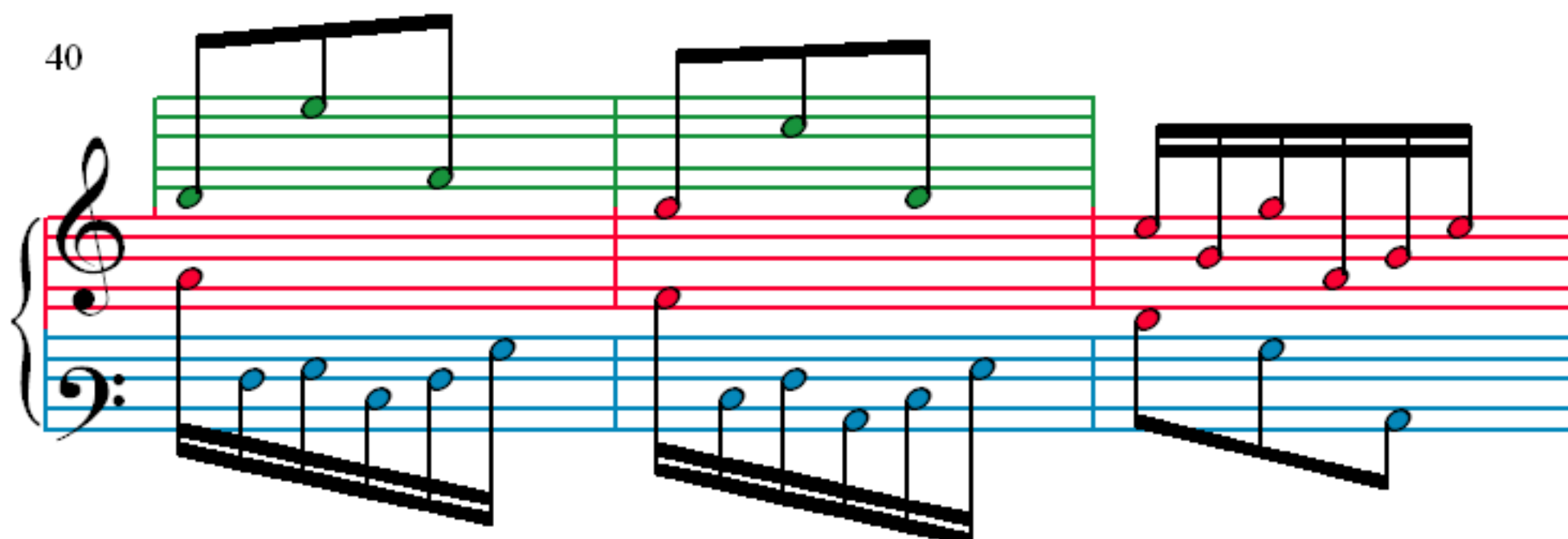




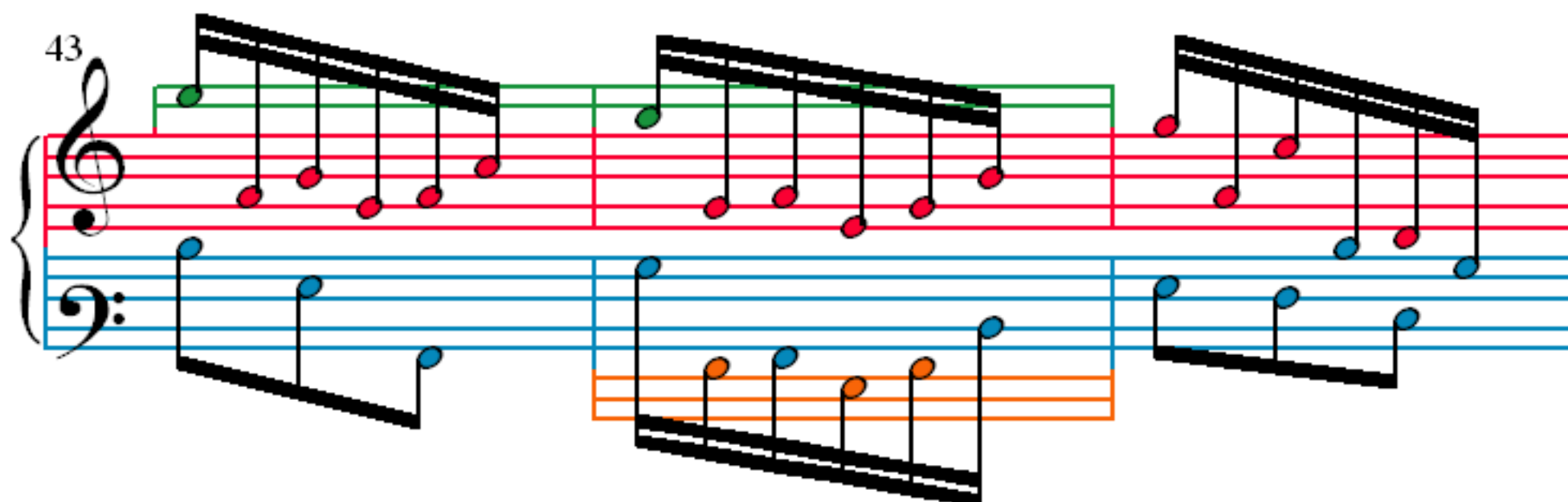
37



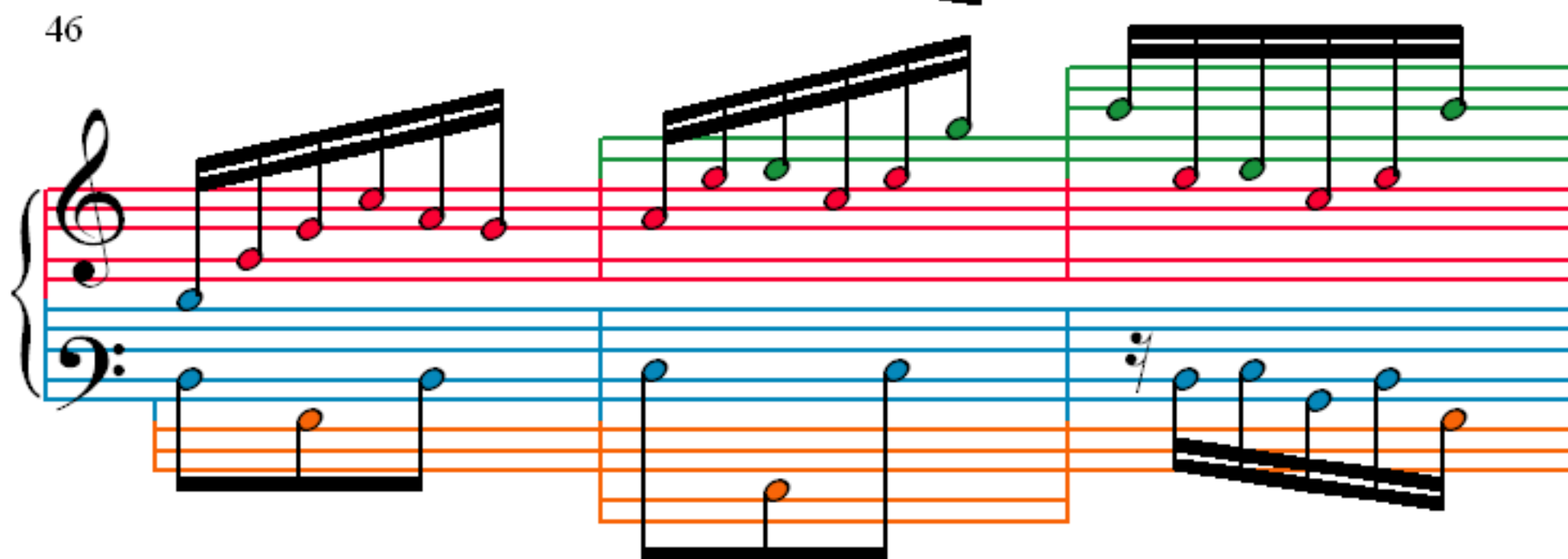
40



43



46



49

52

55

58

61

61

The musical score for Example 61 consists of two staves. The upper staff is for the violin, and the lower staff is for the piano. The piano part is written in a lower register, while the violin part is in a higher register. The score is divided into three measures. In the first measure, the piano plays a descending line of eighth notes, and the violin plays a series of ascending eighth notes. In the second measure, the piano plays a series of ascending eighth notes, and the violin plays a single note. In the third measure, the piano plays a descending line of eighth notes, and the violin plays a series of ascending eighth notes.

64

64

Figure 10: Musical score for measures 64-66. The score is written for three staves: Treble, Middle, and Bass. Measure 64: Treble clef has a whole note chord (F4, A4, C5) and a whole note bass line (F3, A2). Measure 65: Treble clef has a whole note chord (F4, A4, C5) and a whole note bass line (F3, A2). Measure 66: Treble clef has a whole note chord (F4, A4, C5) and a whole note bass line (F3, A2).

67

67

68

69

70

71

72

73

74

75

76

77

78

79

80

81

82

83

84

85

86

87

88

89

90

91

70

70

The musical score for measures 70-72 is shown. The treble staff (green lines) contains a melody of eighth notes, with a repeat sign at the end of measure 72. The bass staff (blue lines) contains a bass line of eighth notes, also with a repeat sign at the end of measure 72. The notes are color-coded: green for the treble staff and blue for the bass staff.

73

Measures 73-75 of a keyboard piece in A minor. Measure 73 features a treble staff with a descending eighth-note scale (F4, E4, D4, C4, B3, A3, G3, F3) and a bass staff with a descending eighth-note scale (F3, E3, D3, C3, B2, A2, G2, F2). Measure 74 has a treble staff with a half note (F4) and a bass staff with a half note (F2). Measure 75 has a treble staff with a half note (F4) and a bass staff with a half note (F2).

76

Measures 76-78 of a keyboard piece in A minor. Measure 76 features a treble staff with a descending eighth-note scale (F4, E4, D4, C4, B3, A3, G3, F3) and a bass staff with a descending eighth-note scale (F3, E3, D3, C3, B2, A2, G2, F2). Measure 77 has a treble staff with a descending eighth-note scale (F4, E4, D4, C4, B3, A3, G3, F3) and a bass staff with a descending eighth-note scale (F3, E3, D3, C3, B2, A2, G2, F2). Measure 78 has a treble staff with a descending eighth-note scale (F4, E4, D4, C4, B3, A3, G3, F3) and a bass staff with a descending eighth-note scale (F3, E3, D3, C3, B2, A2, G2, F2).

79

Measures 79-81 of a keyboard piece in A minor. Measure 79 features a treble staff with a descending eighth-note scale (F4, E4, D4, C4, B3, A3, G3, F3) and a bass staff with a descending eighth-note scale (F3, E3, D3, C3, B2, A2, G2, F2). Measure 80 has a treble staff with a descending eighth-note scale (F4, E4, D4, C4, B3, A3, G3, F3) and a bass staff with a descending eighth-note scale (F3, E3, D3, C3, B2, A2, G2, F2). Measure 81 has a treble staff with a descending eighth-note scale (F4, E4, D4, C4, B3, A3, G3, F3) and a bass staff with a descending eighth-note scale (F3, E3, D3, C3, B2, A2, G2, F2).

82

Measures 82-84 of a keyboard piece in A minor. Measure 82 features a treble staff with a descending eighth-note scale (F4, E4, D4, C4, B3, A3, G3, F3) and a bass staff with a descending eighth-note scale (F3, E3, D3, C3, B2, A2, G2, F2). Measure 83 has a treble staff with a descending eighth-note scale (F4, E4, D4, C4, B3, A3, G3, F3) and a bass staff with a descending eighth-note scale (F3, E3, D3, C3, B2, A2, G2, F2). Measure 84 has a treble staff with a descending eighth-note scale (F4, E4, D4, C4, B3, A3, G3, F3) and a bass staff with a descending eighth-note scale (F3, E3, D3, C3, B2, A2, G2, F2).



85

88

91

94



97

100

103

106

109

Measures 109-110. Treble clef: descending eighth-note scale on a green staff. Bass clef: descending eighth-note scale on a blue staff.

111

Measures 111-112. Treble clef: descending eighth-note scale on a green staff. Bass clef: descending eighth-note scale on a blue staff.

113

Measures 113-115. Treble clef: descending eighth-note scale on a green staff. Bass clef: descending eighth-note scale on a blue staff.

116

Measures 116-118. Treble clef: descending eighth-note scale on a green staff. Bass clef: descending eighth-note scale on a blue staff.