

Loving Sam

Milton Ager

1

3

6

9

Detailed description: This image displays the first eight measures of the piano accompaniment for the song 'Loving Sam' by Milton Ager. The music is written in 4/4 time and features a key signature of one sharp (F#). The notation is presented in four systems, each with a measure number (1, 3, 6, 9) at the beginning. Each system consists of a grand staff with a treble and bass clef. The notes are color-coded: red for the melody, blue for the bass line, and green for the right-hand accompaniment. Measure 1 includes a key signature change from C major to F# major. Measure 3 contains a repeat sign. Measure 6 also features a repeat sign. Measure 9 includes a triplet of eighth notes in the right hand, indicated by a blue bracket and the number '3'. The notation is clean and professional, suitable for a music book or sheet music.

11

14

17

20

22

3

24

26

28

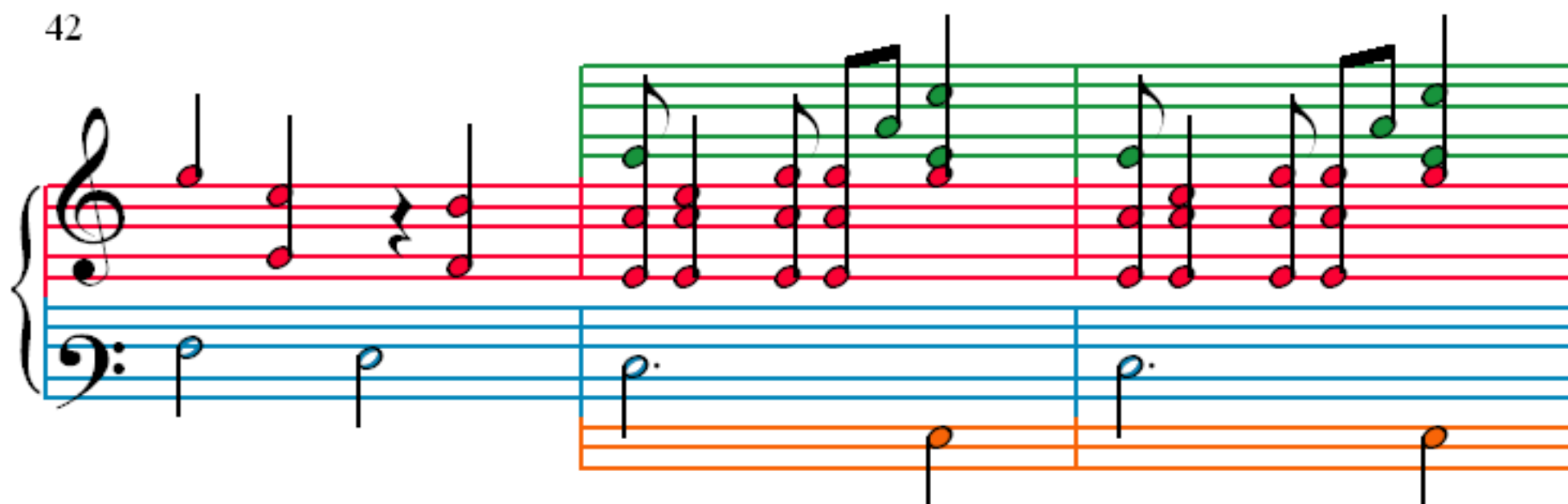
31

33

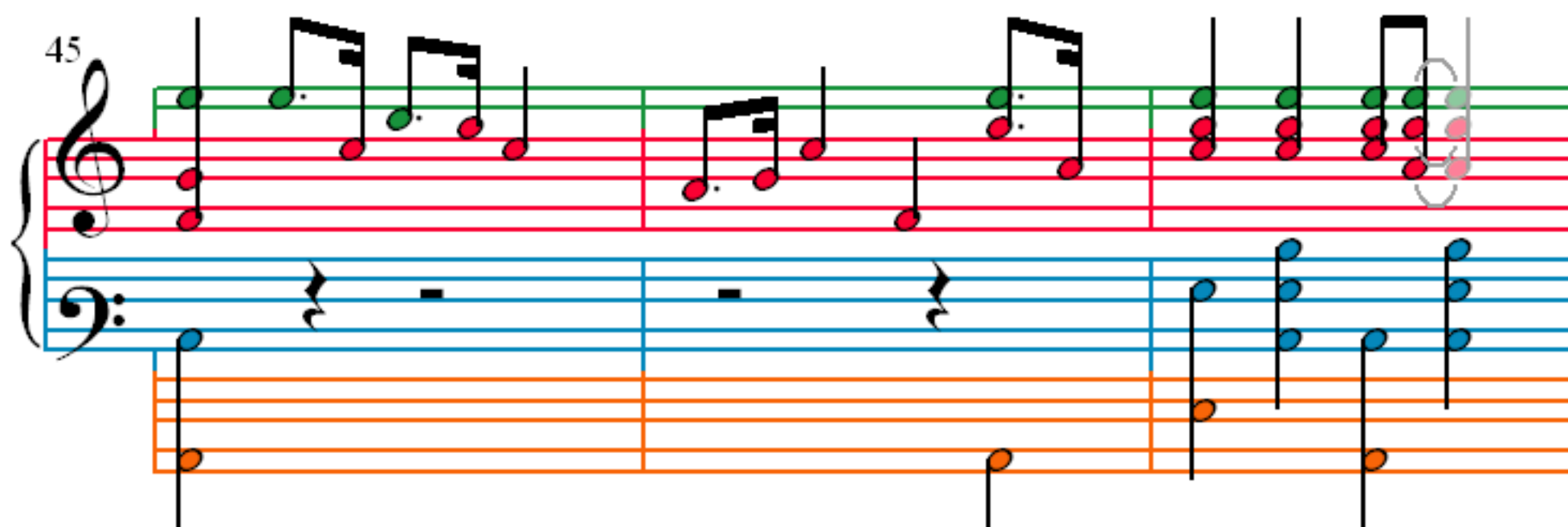
36

39

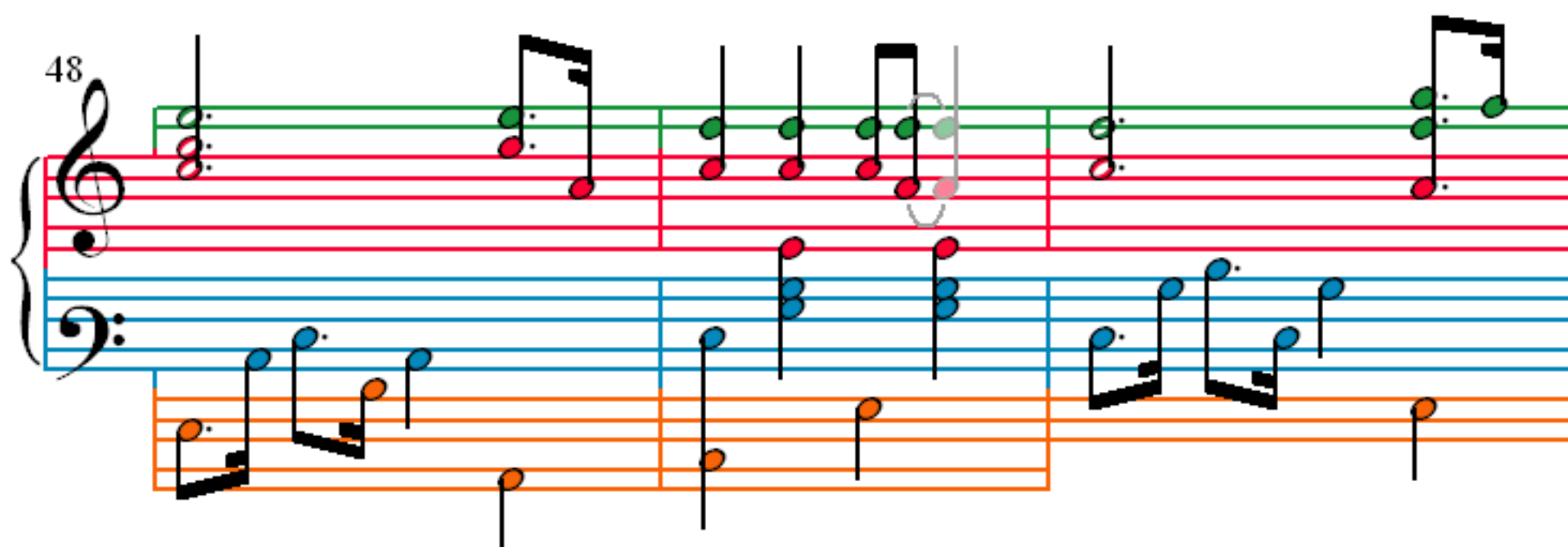
42



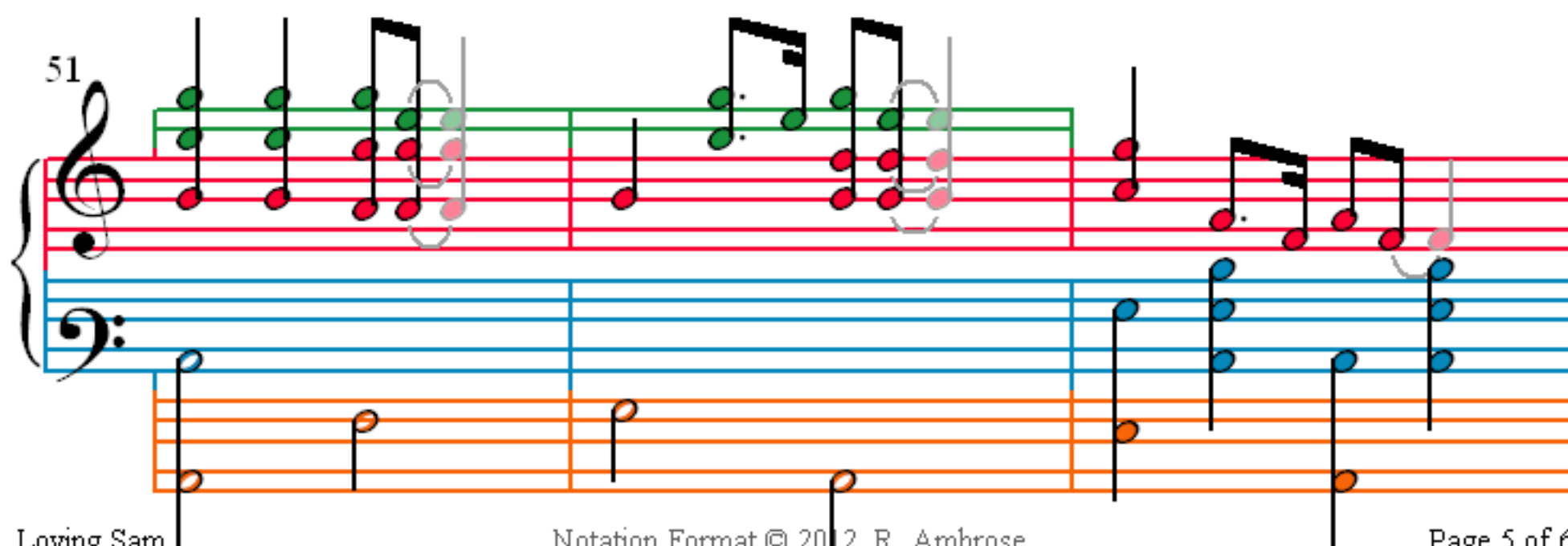
45



48



51



54

56

58

61