

Louisville Lou

Milton Ager

1

3

5

7

10

Measures 10 and 11. Treble and bass staves show chords and single notes. A third staff has orange notes on a red line. A fourth staff has pink notes on a red line. A double bar line is at the end of measure 11.

12

Measures 12 and 13. Treble and bass staves show chords and single notes. A third staff has orange notes on a red line. A fourth staff has pink notes on a red line. A double bar line is at the end of measure 13.

14

Measures 14 and 15. Treble and bass staves show chords and single notes. A third staff has orange notes on a red line. A fourth staff has pink notes on a red line. A double bar line is at the end of measure 15.

16

Measures 16 and 17. Treble and bass staves show chords and single notes. A third staff has orange notes on a red line. A fourth staff has pink notes on a red line. A double bar line is at the end of measure 17.

19

22

24

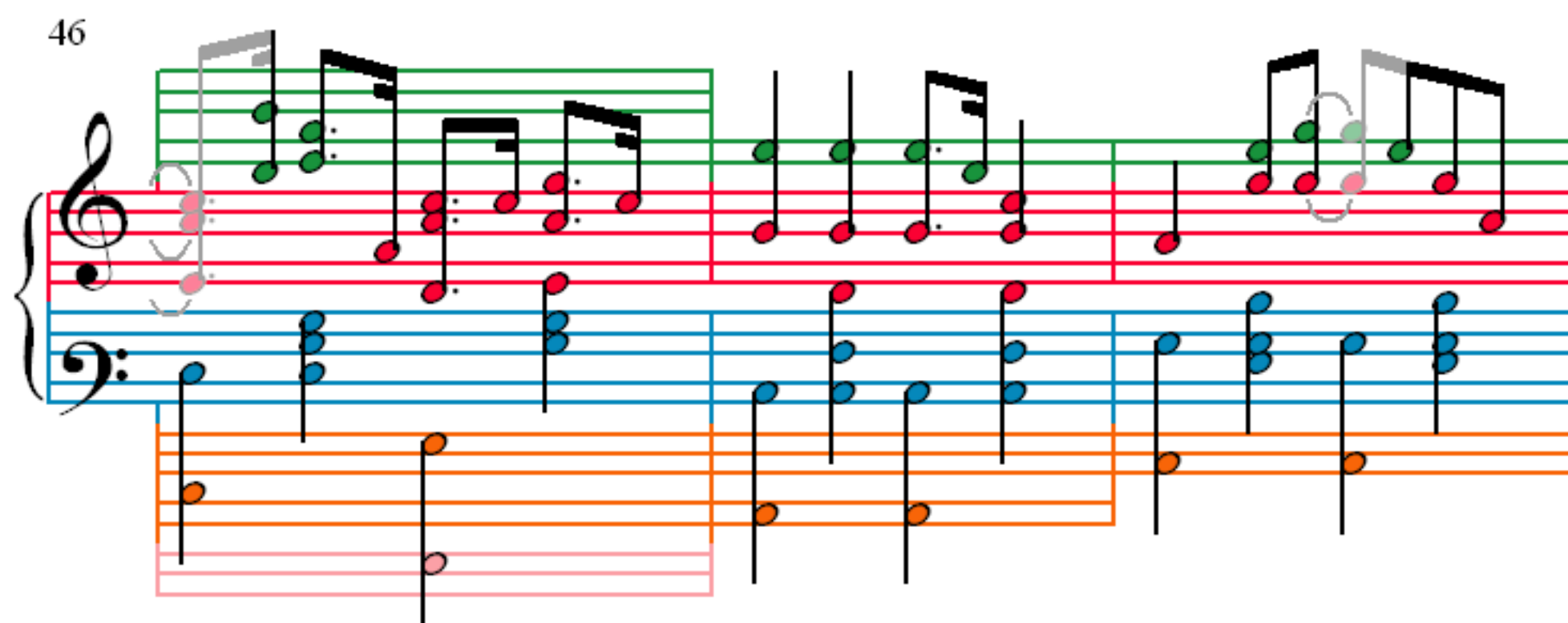
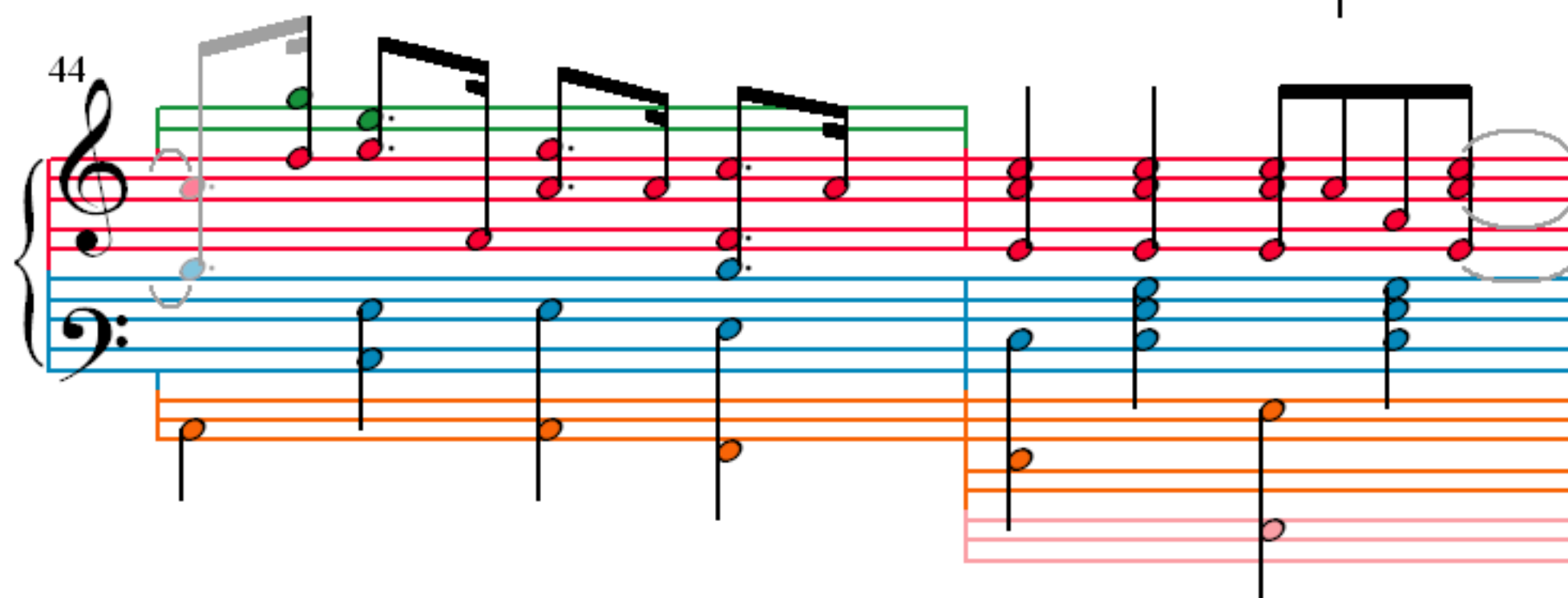
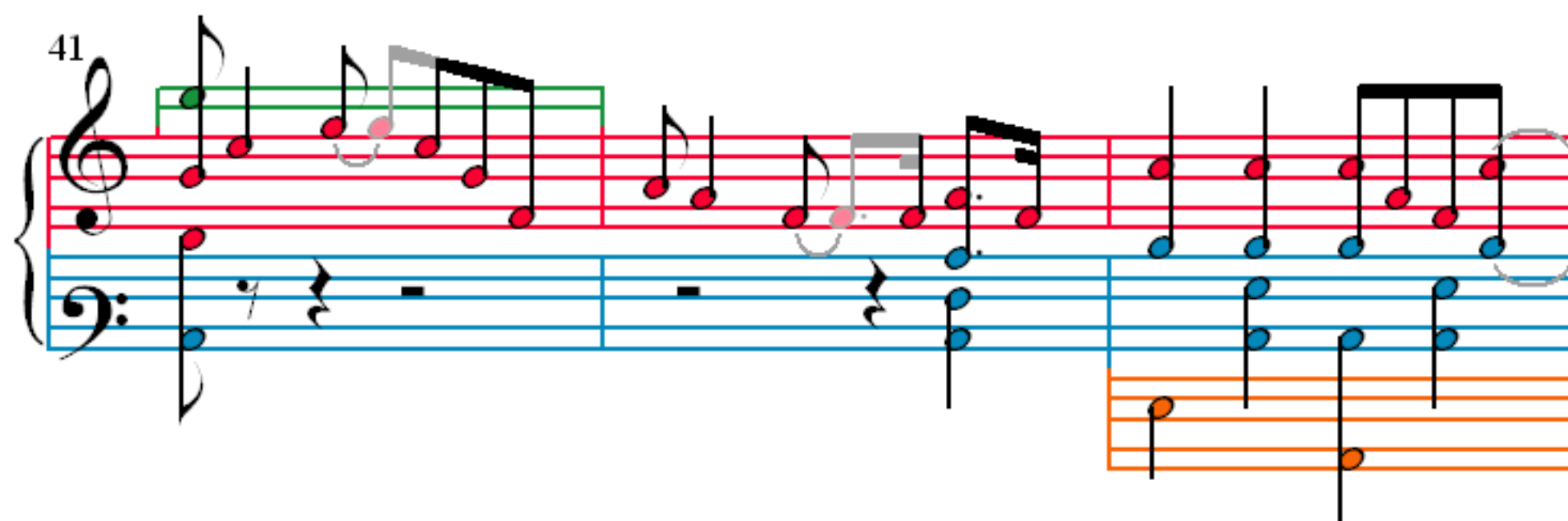
26

Measures 29-30 of the musical score. The system consists of three staves: a grand staff (treble and bass clefs) and a single bass staff. The grand staff has a red line and a blue line. The single bass staff has an orange line and a pink line. The notation includes various note values, including eighth and sixteenth notes, and rests. A grey oval highlights a specific note in the grand staff.

Measures 31-32 of the musical score. The system consists of three staves: a grand staff (treble and bass clefs) and a single bass staff. The grand staff has a red line and a blue line. The single bass staff has an orange line and a pink line. The notation includes various note values, including eighth and sixteenth notes, and rests.

Measures 33-34 of the musical score. The system consists of three staves: a grand staff (treble and bass clefs) and a single bass staff. The grand staff has a red line and a blue line. The single bass staff has an orange line and a pink line. The notation includes various note values, including eighth and sixteenth notes, and rests. A grey oval highlights a specific note in the grand staff.

Measures 35-36 of the musical score. The system consists of three staves: a grand staff (treble and bass clefs) and a single bass staff. The grand staff has a red line and a blue line. The single bass staff has an orange line and a pink line. The notation includes various note values, including eighth and sixteenth notes, and rests.



49

52

55

57