

# Autumn Nocturne

Josef Myrow

1

Measures 1-3 of the piece. The music is in 4/4 time, indicated by a treble clef, a key signature of one flat (B-flat), and a 4/4 time signature. The notation is color-coded: the right hand (treble clef) features green notes on the upper staff and red notes on the lower staff; the left hand (bass clef) features blue notes on the upper staff and orange notes on the lower staff. Measure 1 contains a whole note chord in the right hand and a whole note in the left hand. Measure 2 contains a half note chord in the right hand and a half note in the left hand. Measure 3 contains a quarter note chord in the right hand and a quarter note in the left hand.

4

Measures 4-6 of the piece. The notation continues with the same color-coding. Measure 4 contains a quarter note chord in the right hand and a quarter note in the left hand. Measure 5 contains a half note chord in the right hand and a half note in the left hand. Measure 6 contains a whole note chord in the right hand and a whole note in the left hand.

7

Measures 7-9 of the piece. The notation continues with the same color-coding. Measure 7 contains a quarter note chord in the right hand and a quarter note in the left hand. Measure 8 contains a half note chord in the right hand and a half note in the left hand. Measure 9 contains a whole note chord in the right hand and a whole note in the left hand.

11

Measures 11-13 of the musical score. The notation features a grand staff with treble and bass clefs, and a separate staff below. The treble staff has green notes, the middle staff has red notes, and the bass staff has blue notes. The bottom staff has orange notes. Measures 11-13 show a sequence of notes with some slurs and ties.

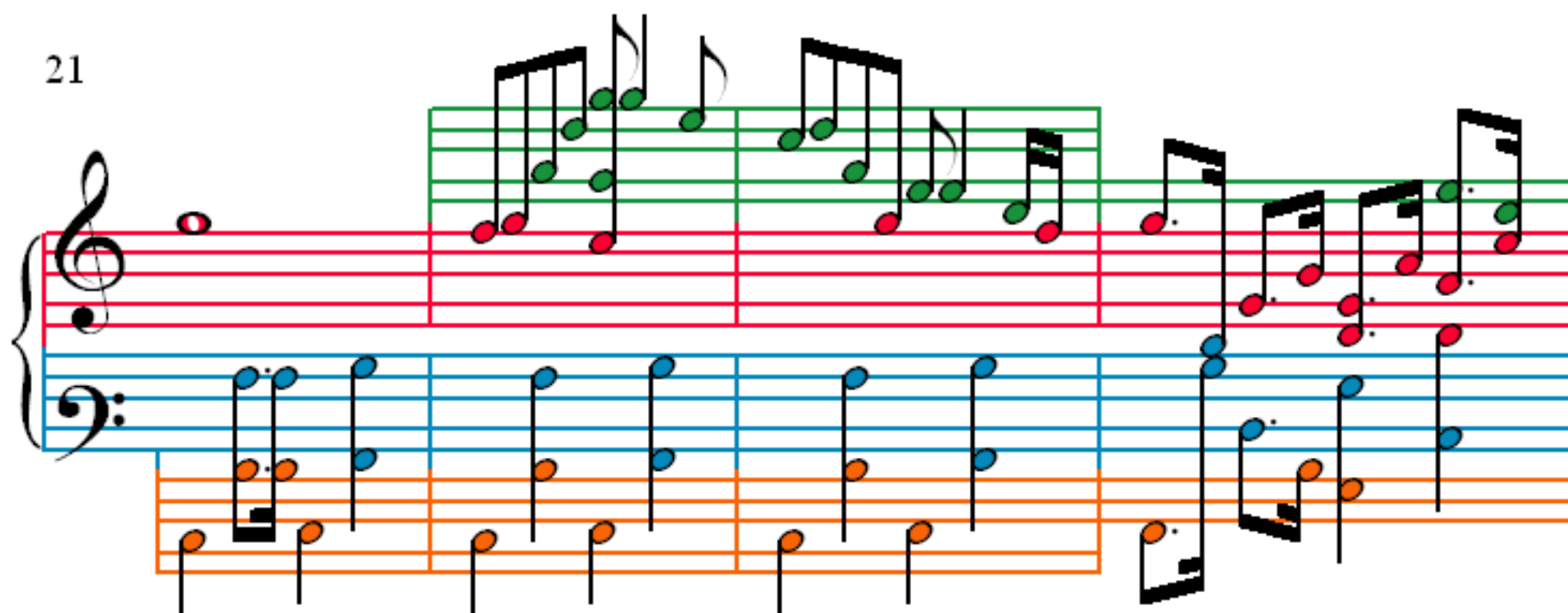
14

Measures 14-16 of the musical score. The notation features a grand staff with treble and bass clefs, and a separate staff below. The treble staff has green notes, the middle staff has red notes, and the bass staff has blue notes. The bottom staff has orange notes. Measures 14-16 show a sequence of notes with some slurs and ties.

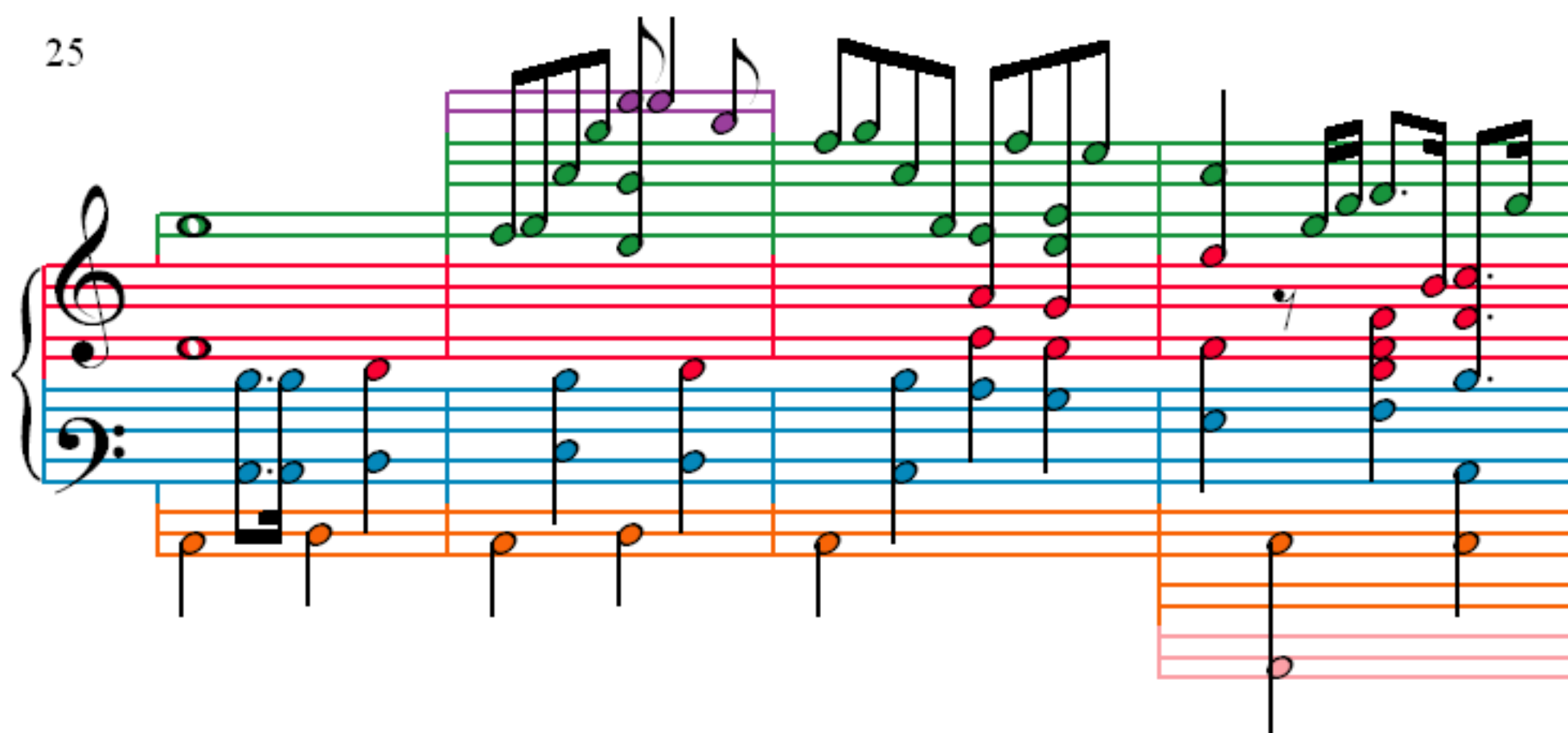
17

Measures 17-20 of the musical score. The notation features a grand staff with treble and bass clefs, and a separate staff below. The treble staff has green notes, the middle staff has red notes, and the bass staff has blue notes. The bottom staff has orange notes. Measures 17-20 show a sequence of notes with some slurs and ties.

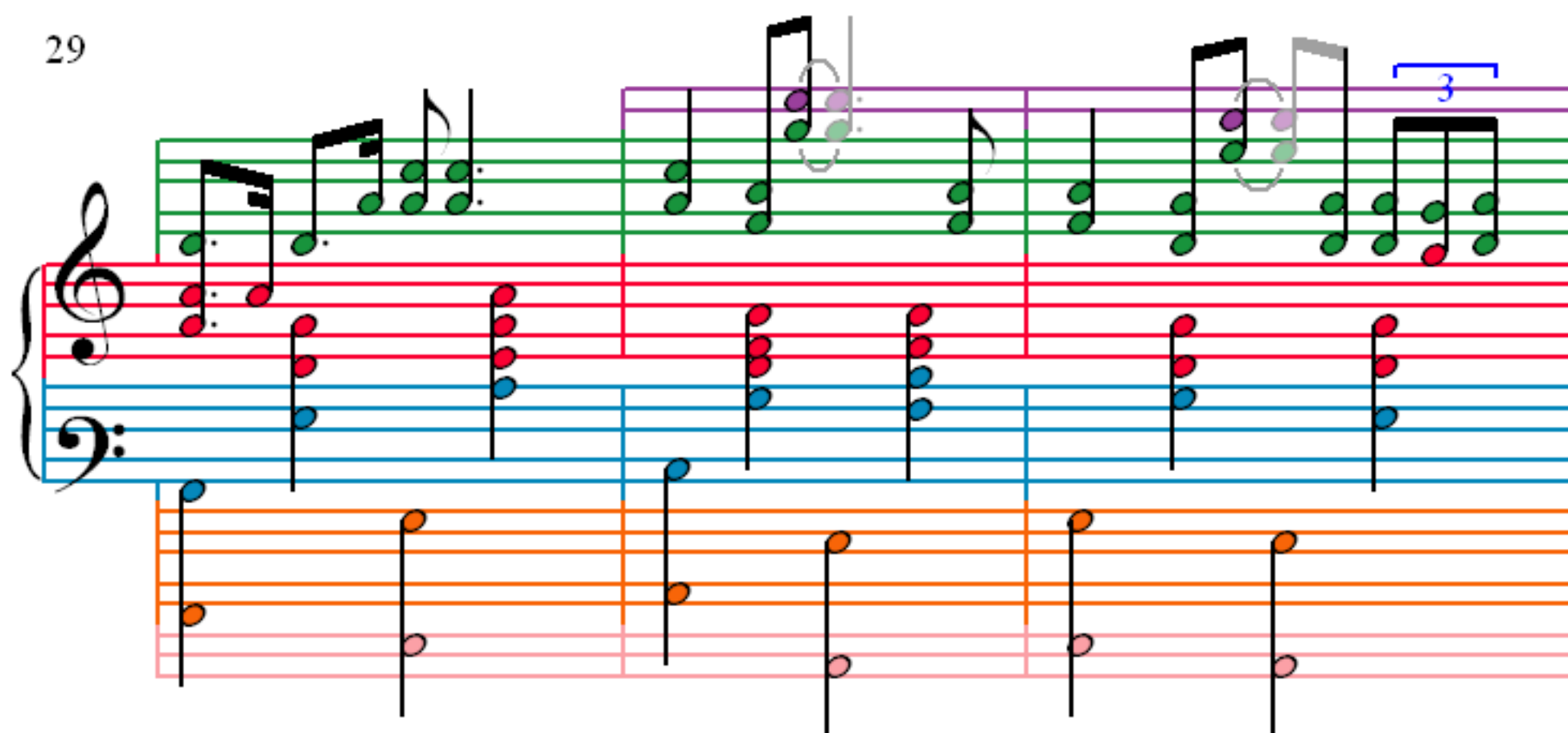
21



25



29



32

32

35

35

39

39