

# Menuetto

1

Hummel

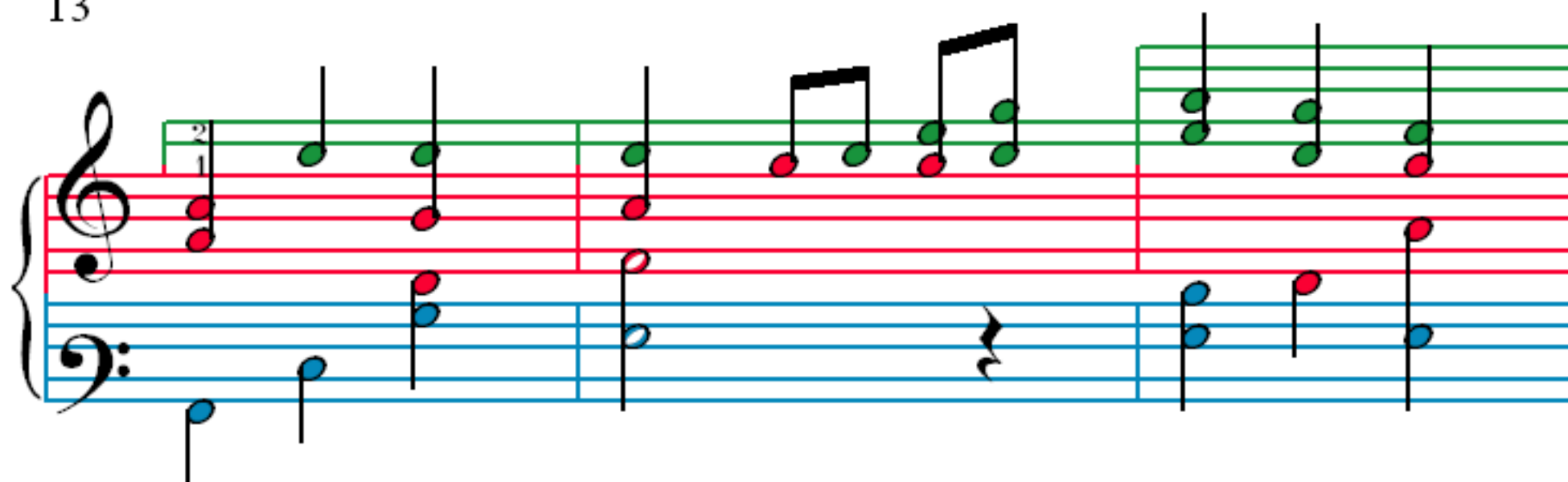
Measures 1-3 of the Minuet. The piece is in 3/4 time with a key signature of one flat (B-flat). The notation is for piano, with a grand staff (treble and bass clefs). The first staff (treble) has a green line above it. The second staff (bass) has a blue line below it. The notes are colored: red for the right hand and blue for the left hand. Measure 1 starts with a treble rest and a bass eighth note. Measure 2 has a treble eighth note and a bass eighth note. Measure 3 has a treble eighth note and a bass eighth note. Fingerings are indicated by numbers 1-5.

Measures 4-6 of the Minuet. Measure 4 has a treble eighth note and a bass eighth note. Measure 5 has a treble eighth note and a bass eighth note. Measure 6 has a treble eighth note and a bass eighth note. Fingerings are indicated by numbers 1-5.

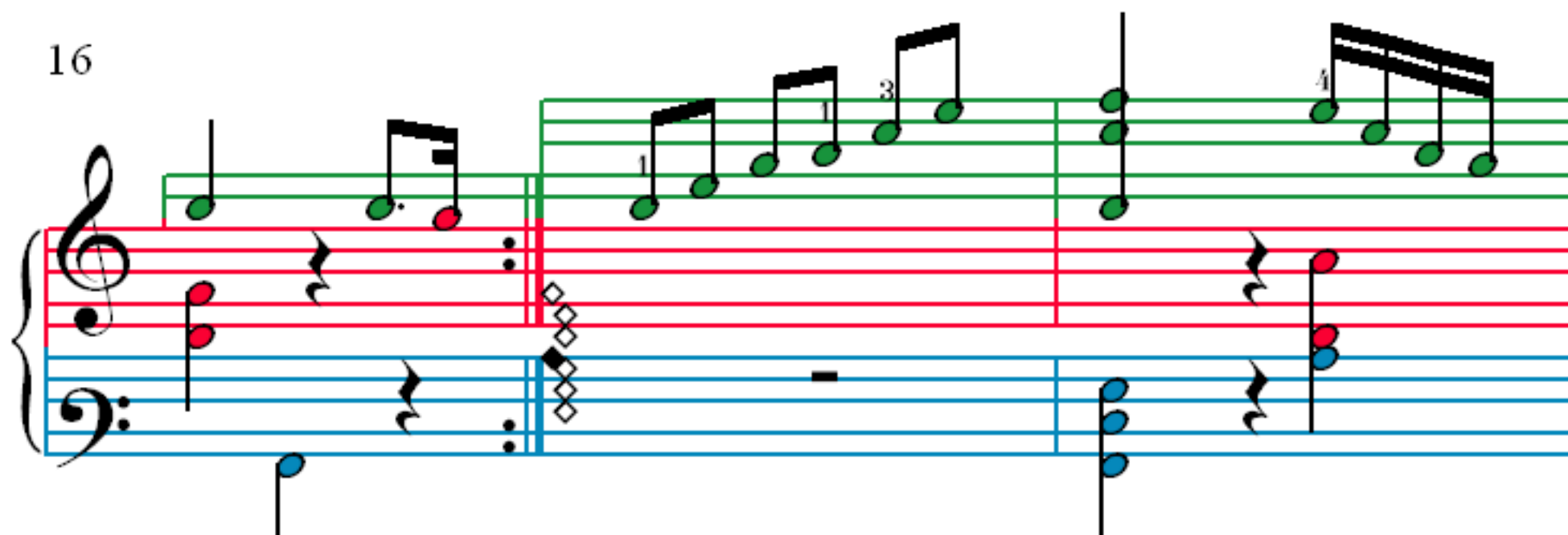
Measures 7-9 of the Minuet. Measure 7 has a treble eighth note and a bass eighth note. Measure 8 has a treble eighth note and a bass eighth note. Measure 9 has a treble eighth note and a bass eighth note. Fingerings are indicated by numbers 1-5.

Measures 10-12 of the Minuet. Measure 10 has a treble eighth note and a bass eighth note. Measure 11 has a treble eighth note and a bass eighth note. Measure 12 has a treble eighth note and a bass eighth note. Fingerings are indicated by numbers 1-5.

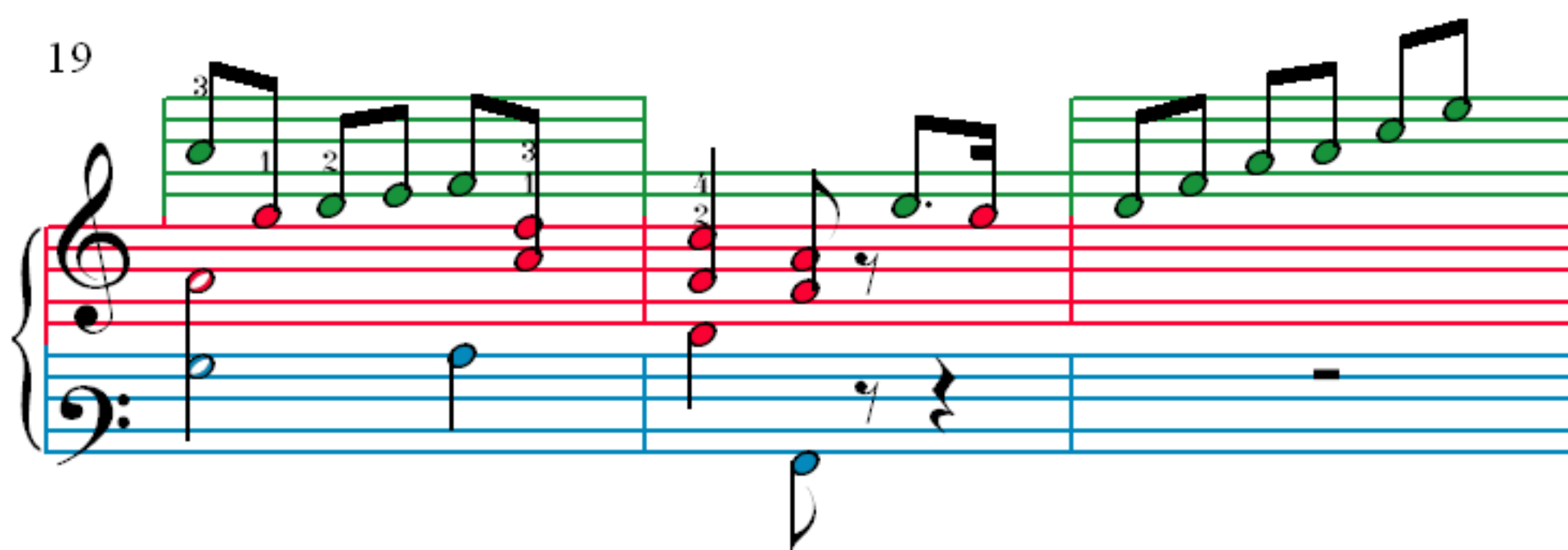
13



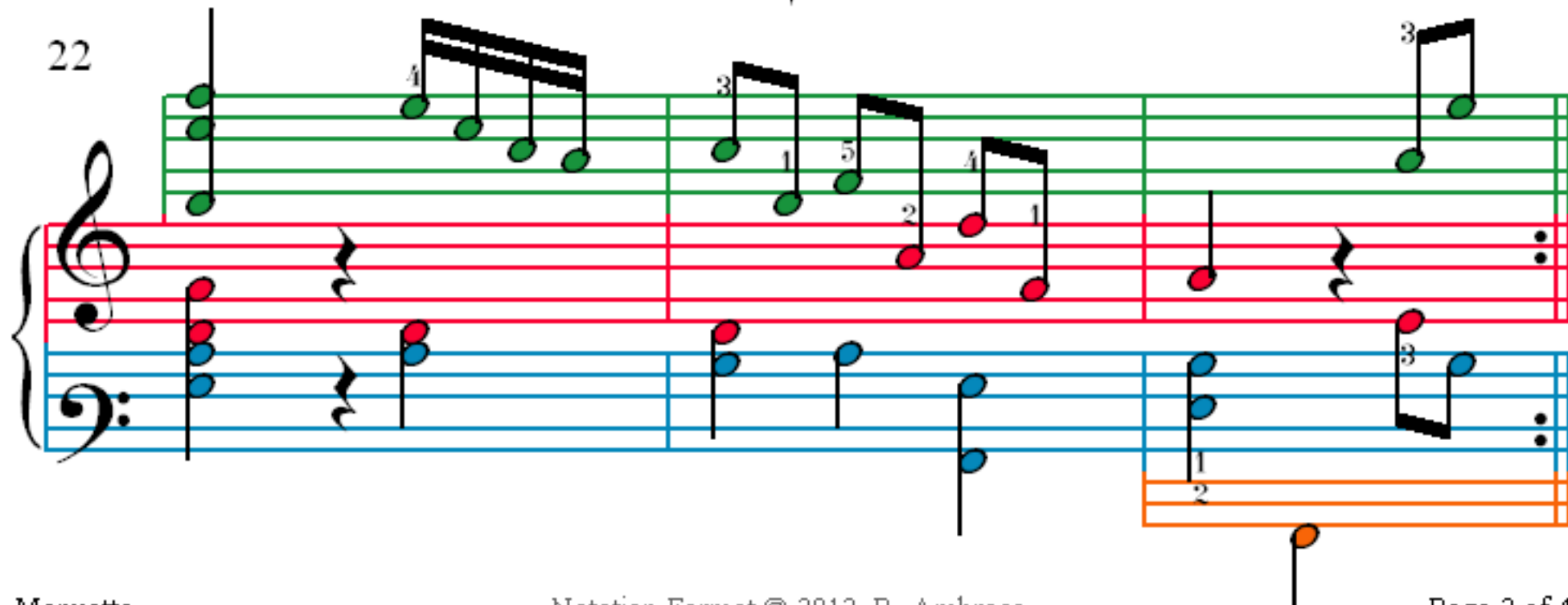
16



19



22



25

28

31

34

38

Measures 38-41 of the piece. The notation is in treble and bass clefs. The treble staff has a green line and a red line. The bass staff has a blue line and a red line. The notes are colored green, red, and blue. Measure 38 starts with a treble staff entry. Measure 39 has a treble staff entry. Measure 40 has a treble staff entry. Measure 41 has a treble staff entry. The bass staff has a blue line and a red line. The notes are colored blue, red, and blue. Measure 41 ends with a treble staff entry.

42

Measures 42-44 of the piece. The notation is in treble and bass clefs. The treble staff has a green line and a red line. The bass staff has a blue line and a red line. The notes are colored green, red, and blue. Measure 42 starts with a treble staff entry. Measure 43 has a treble staff entry. Measure 44 has a treble staff entry. The bass staff has a blue line and a red line. The notes are colored blue, red, and blue. Measure 44 ends with a treble staff entry.

45

Measures 45-48 of the piece. The notation is in treble and bass clefs. The treble staff has a green line and a red line. The bass staff has a blue line and a red line. The notes are colored green, red, and blue. Measure 45 starts with a treble staff entry. Measure 46 has a treble staff entry. Measure 47 has a treble staff entry. Measure 48 has a treble staff entry. The bass staff has a blue line and a red line. The notes are colored blue, red, and blue. Measure 48 ends with a treble staff entry.

49

Measures 49-52 of the piece. The notation is in treble and bass clefs. The treble staff has a green line and a red line. The bass staff has a blue line and a red line. The notes are colored green, red, and blue. Measure 49 starts with a treble staff entry. Measure 50 has a treble staff entry. Measure 51 has a treble staff entry. Measure 52 has a treble staff entry. The bass staff has a blue line and a red line. The notes are colored blue, red, and blue. Measure 52 ends with a treble staff entry.