

Music Box

ED. Poldini

$\text{♩} = 120$

Measures 1-3 of the piece. The key signature is three flats (B-flat, E-flat, A-flat) and the time signature is 3/8. The right hand (treble clef) features a melody with green notes and fingerings: measure 1 (2, 1, 4), measure 2 (2), and measure 3 (3, 1). The left hand (bass clef) features a bass line with red notes and fingerings: measure 1 (5, 3, 1), measure 2 (4, 2, 1), and measure 3 (5, 3). The staves are color-coded: green for the right hand and blue for the left hand.

4

Measures 4-6 of the piece. The right hand (treble clef) features a melody with purple notes and fingerings: measure 4 (1, 4), measure 5 (4), and measure 6 (4). The left hand (bass clef) features a bass line with red notes and fingerings: measure 4 (4), measure 5 (5, 3), and measure 6 (5, 3). The staves are color-coded: green for the right hand and blue for the left hand.

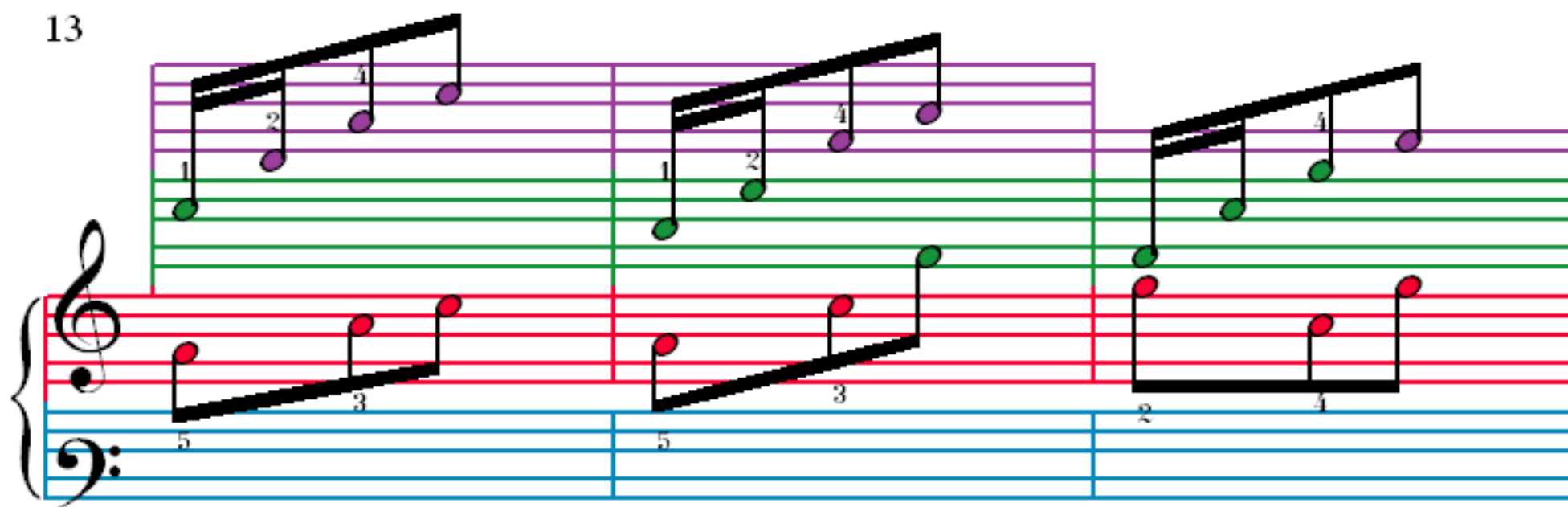
7

Measures 7-9 of the piece. The right hand (treble clef) features a melody with purple notes and fingerings: measure 7 (3, 4), measure 8 (5, 4, 1, 3), and measure 9 (2, 1, 4). The left hand (bass clef) features a bass line with red notes and fingerings: measure 7 (2, 4), measure 8 (rest), and measure 9 (5, 3). The staves are color-coded: green for the right hand and blue for the left hand.

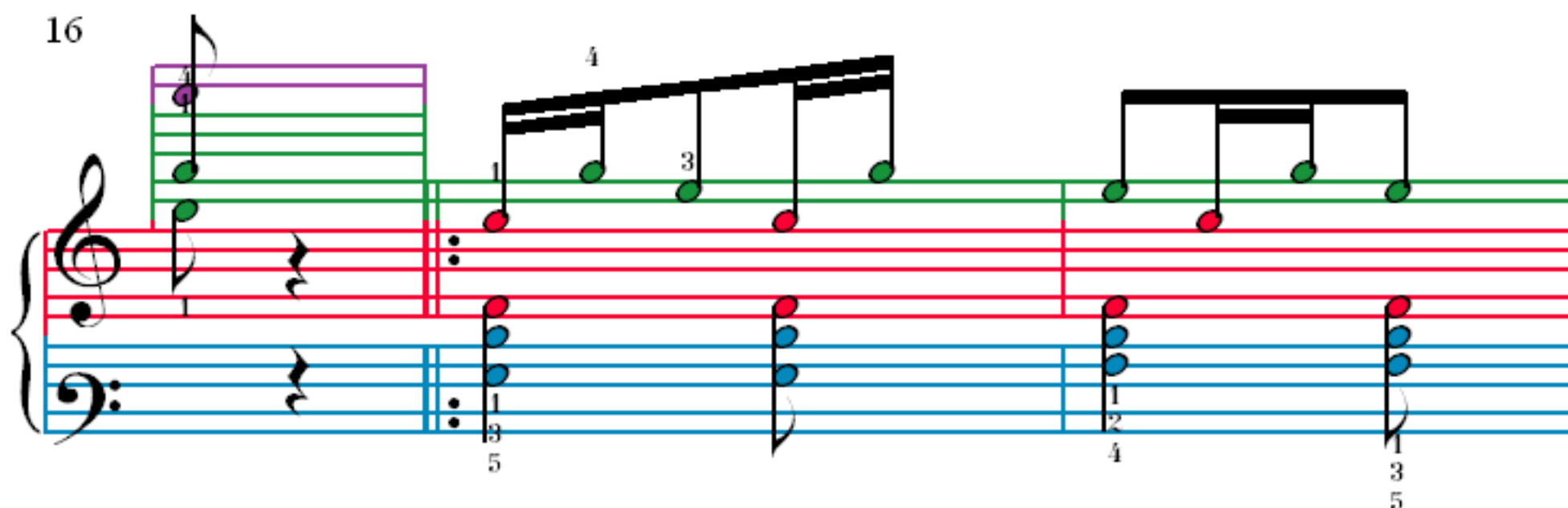
10

Measures 10-12 of the piece. The right hand (treble clef) features a melody with green notes and fingerings: measure 10 (3, 1), measure 11 (3), and measure 12 (3). The left hand (bass clef) features a bass line with red notes and fingerings: measure 10 (4, 2), measure 11 (5, 3), and measure 12 (5, 3). The staves are color-coded: green for the right hand and blue for the left hand.

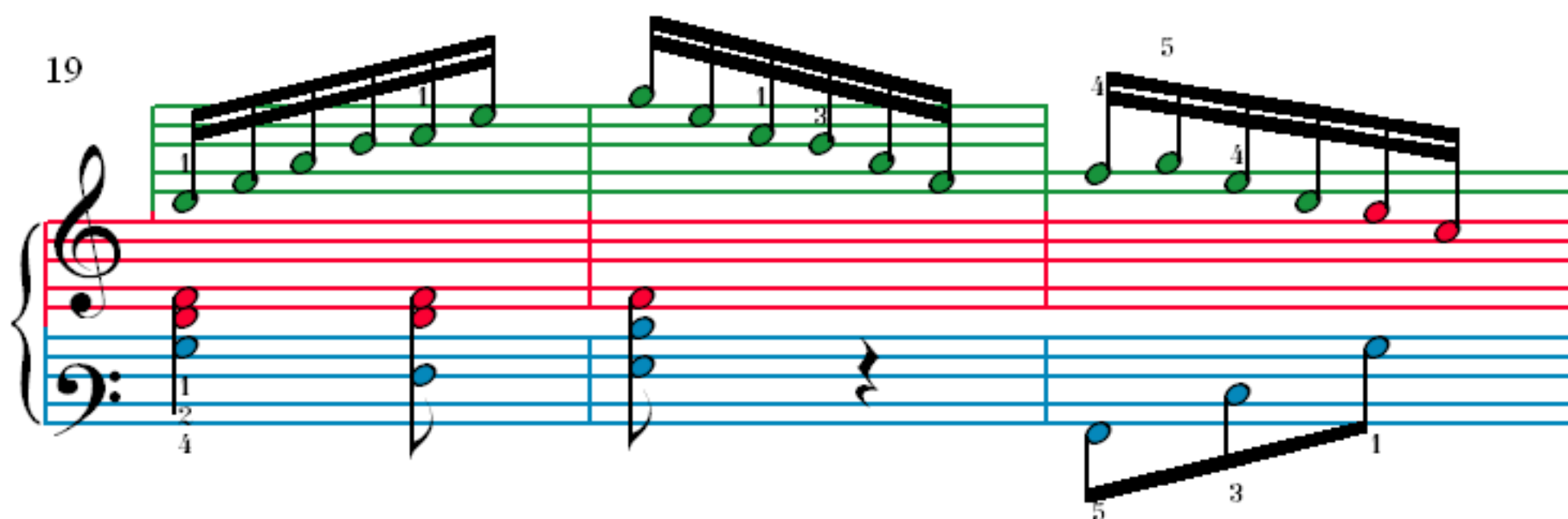
13



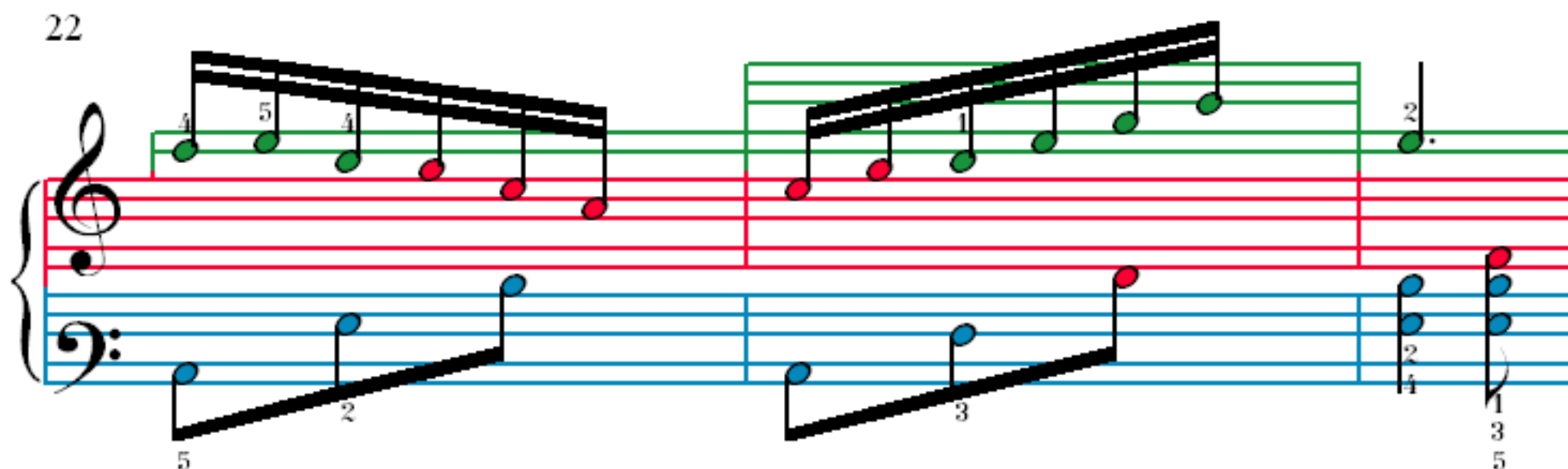
16



19



22



25

28

31

35

[illegible]

42

45

45

48

The musical score for Example 48 consists of three measures. The treble staff (top) features a sequence of notes: G4 (green), A4 (purple), B4 (purple), and C5 (purple). The bass staff (bottom) features a sequence of notes: E3 (red), F3 (red), G3 (red), and A3 (red). The notes are connected by a thick black line, indicating a continuous melodic line. The notes are color-coded: green for G, purple for A and B, and red for E, F, and G. The exercise is marked with a '4' in the first measure, a '4' in the second measure, and a '3' and '4' in the third measure, indicating the number of notes in each measure.

51

54

57

60

63

66

69

72