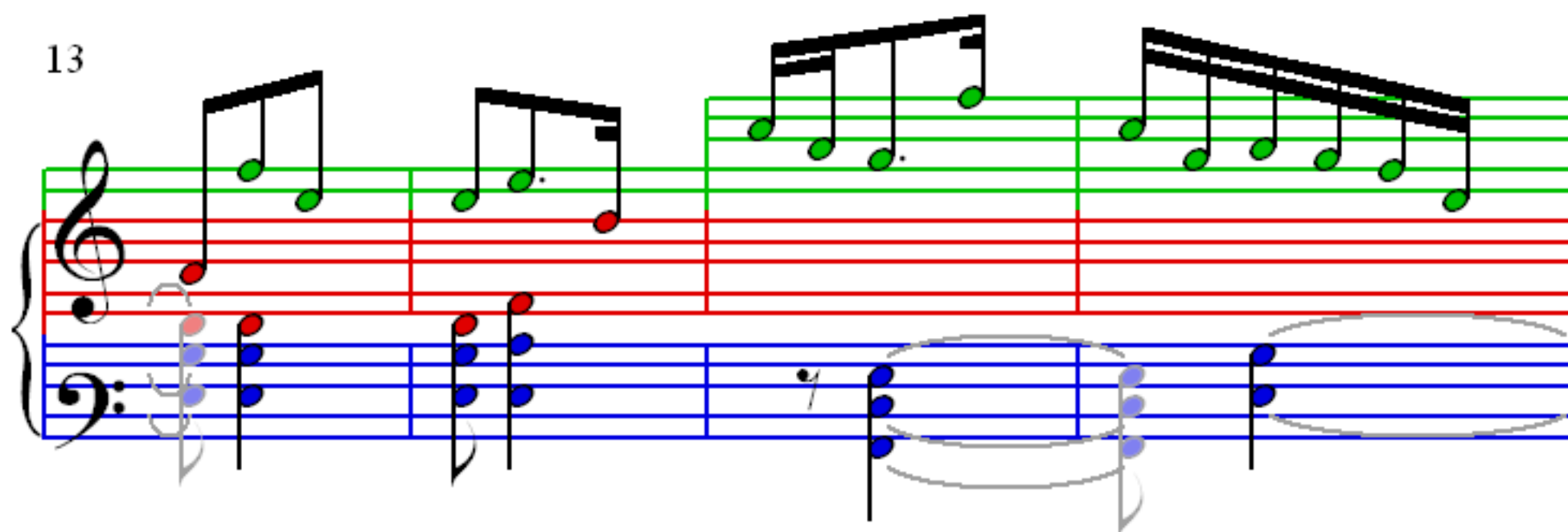
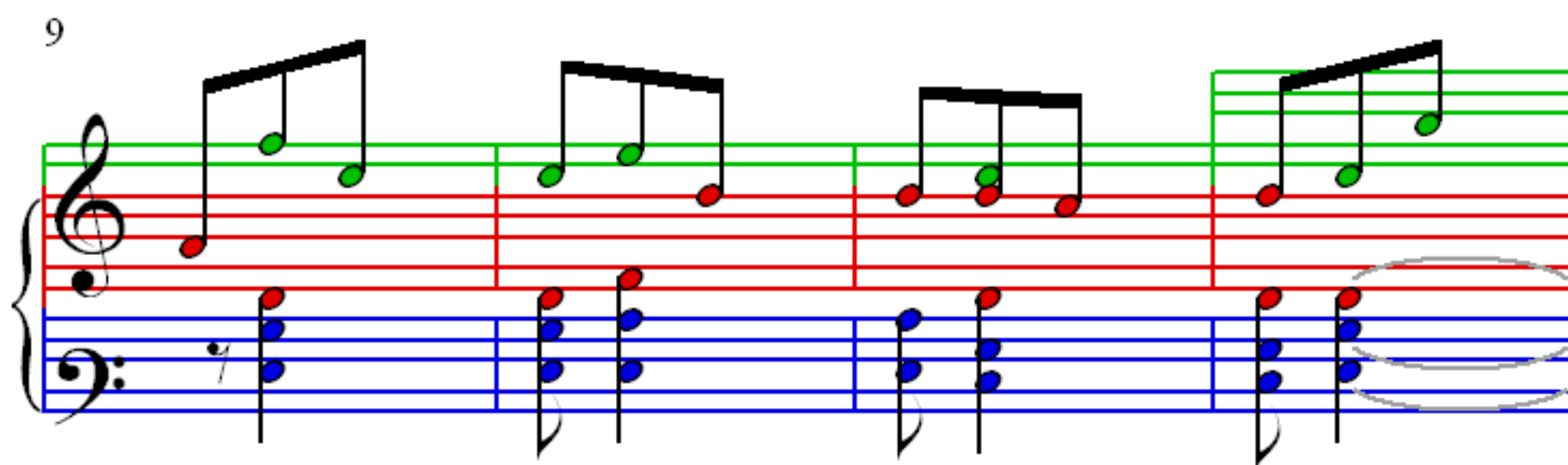
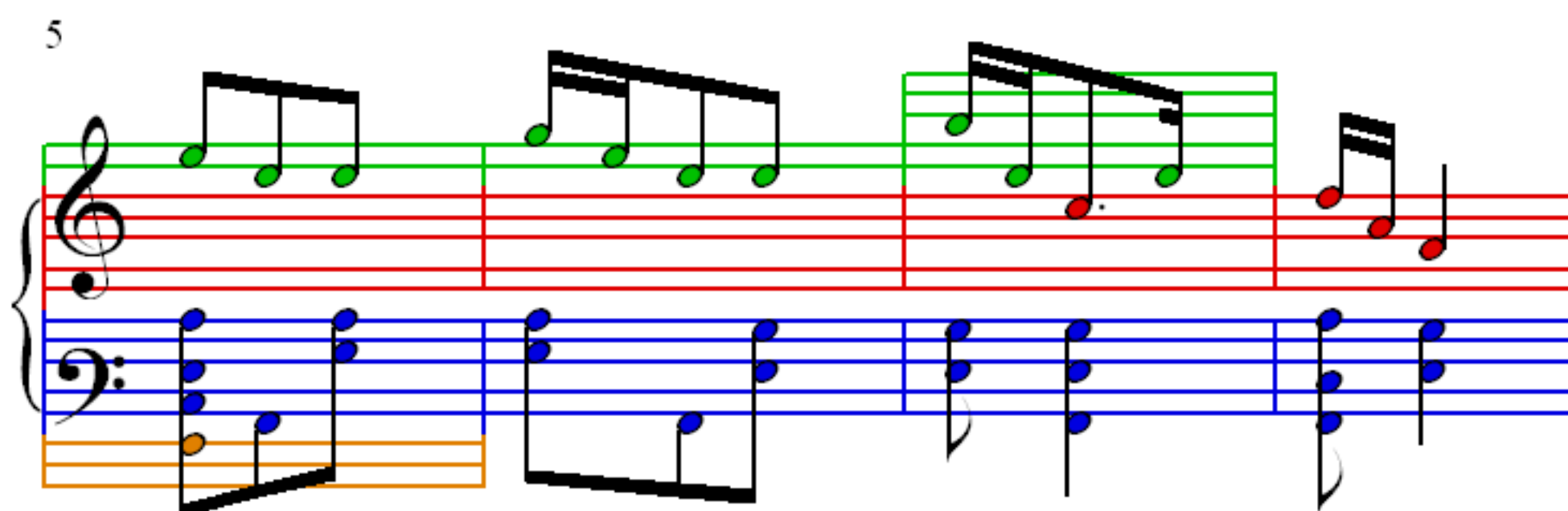
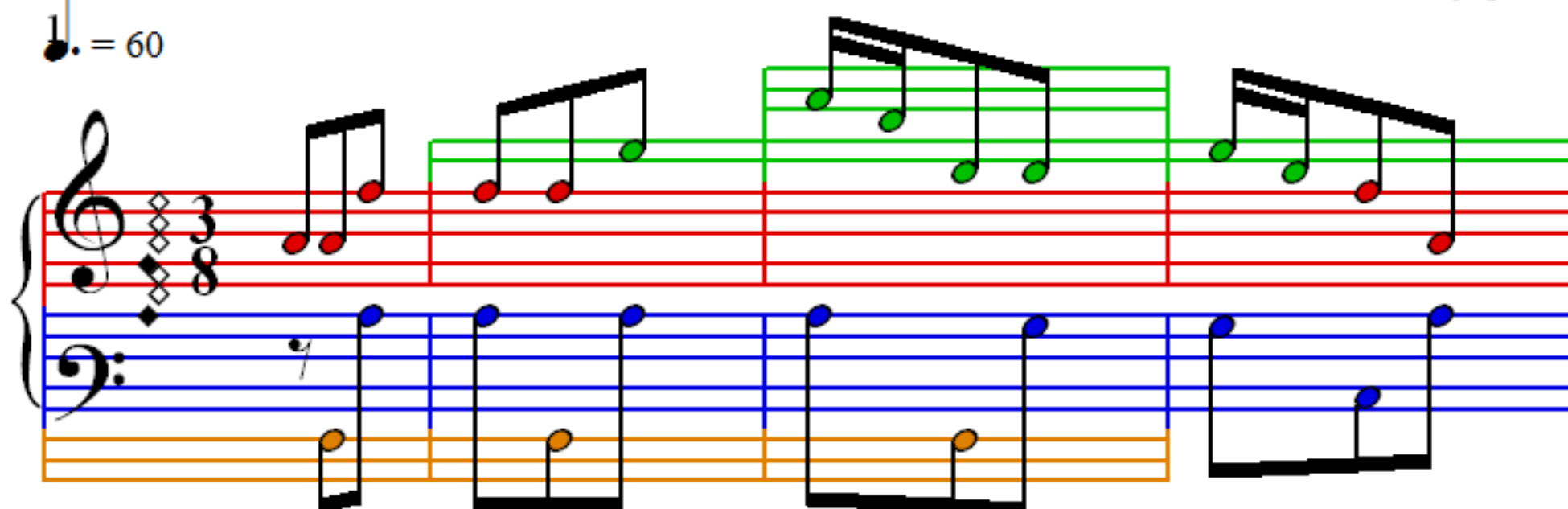


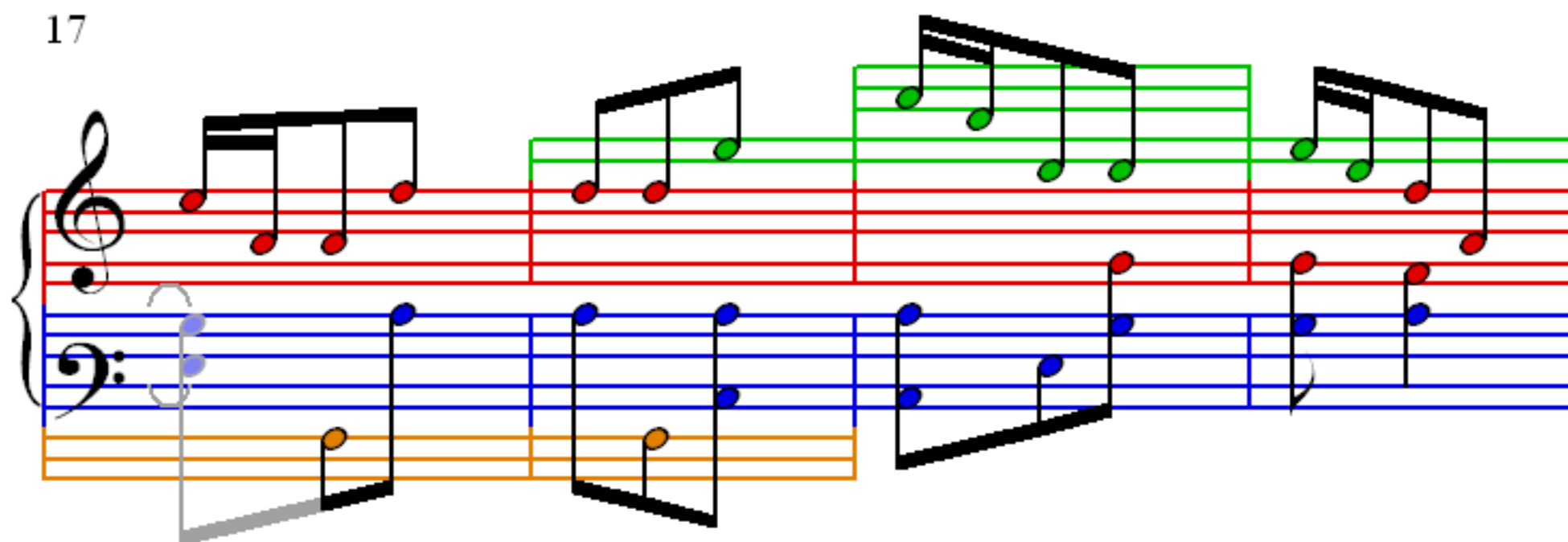
The Countess of Farnham's Waltz

Spagnoletti

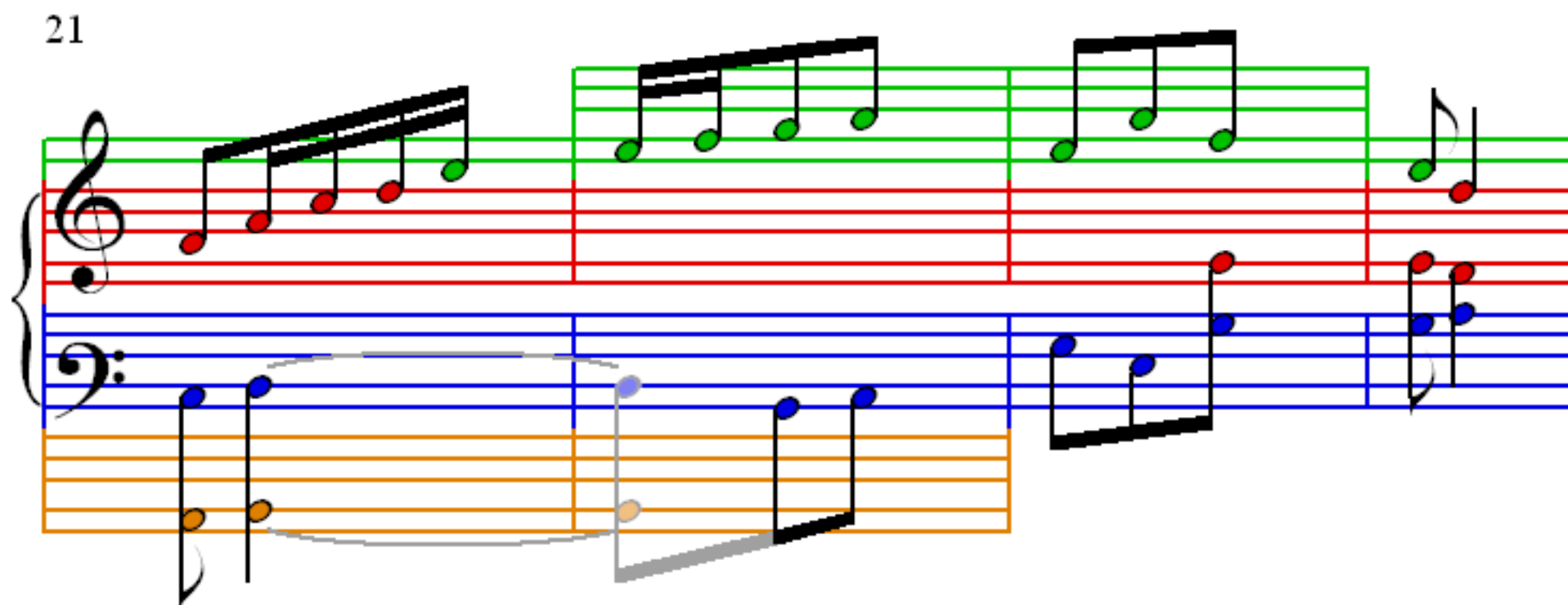
$\text{♩} = 60$



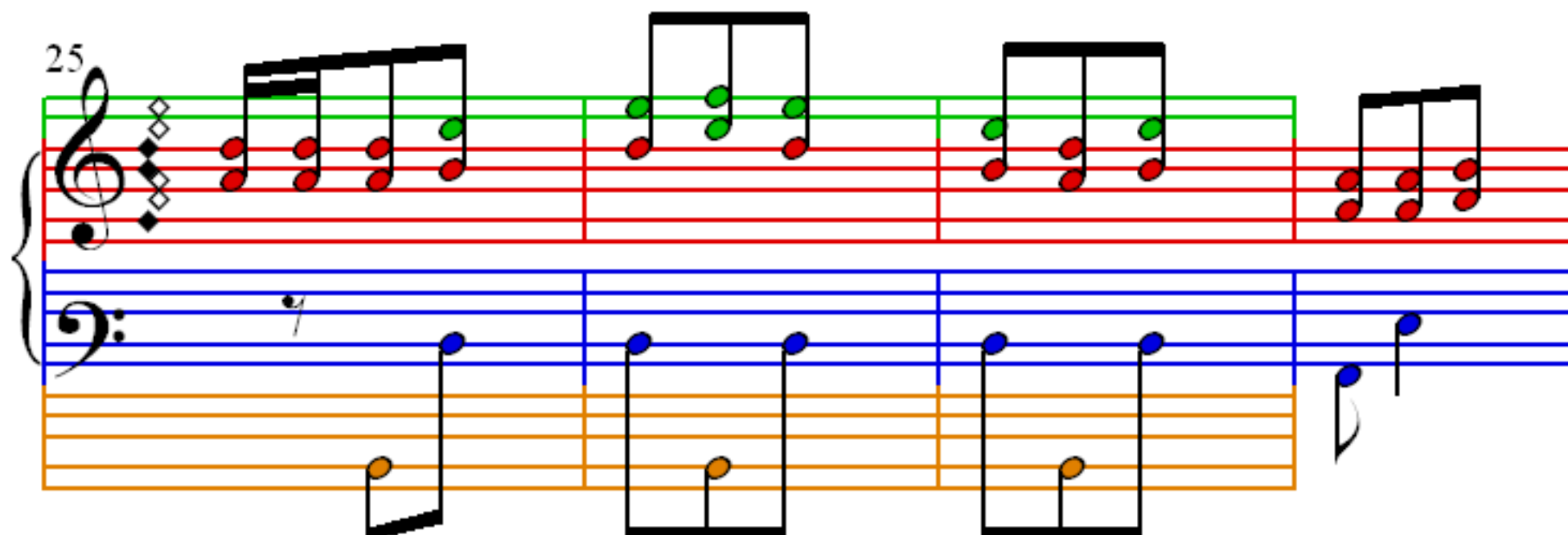
17



21



25



29

This system contains measures 29 through 32. The treble clef staff features a melody with eighth and sixteenth notes, some of which are highlighted in green. The bass clef staff provides a harmonic accompaniment with blue notes, and a lower staff shows orange notes. Measure 32 concludes with a double bar line.

33

This system contains measures 33 through 36. The treble clef staff continues the melody with green highlights. The bass clef staff maintains the accompaniment. Measure 36 ends with a double bar line.

37

This system contains measures 37 through 40. The treble clef staff shows the melody with green highlights. The bass clef staff continues the accompaniment. Measure 40 ends with a double bar line.