

# Something Doing

S. Joplin (1868–1917)

1

$\bullet = 60$

2/4

This system contains measures 1 through 4 of the piece. It is written in 2/4 time. The treble clef staff has a key signature of one flat (B-flat). The bass clef staff has a key signature of two flats (B-flat and E-flat). The music features a mix of eighth and sixteenth notes, with some beamed sixteenth notes. A purple box highlights the final measure (measure 4), which contains a half note G4 and a half note F4 in the treble, and a half note D3 and a half note C3 in the bass.

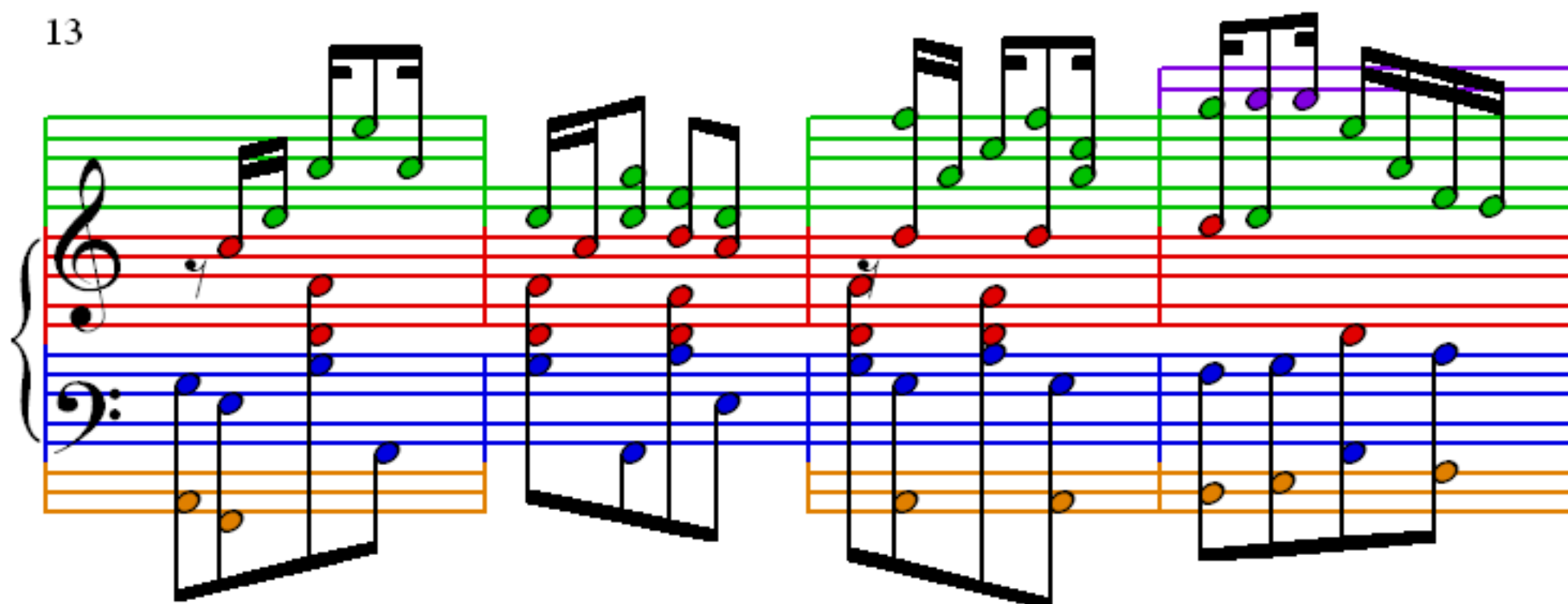
5

This system contains measures 5 through 8. The notation continues with eighth and sixteenth notes. A purple box highlights the final measure (measure 8), which contains a half note G4 and a half note F4 in the treble, and a half note D3 and a half note C3 in the bass.

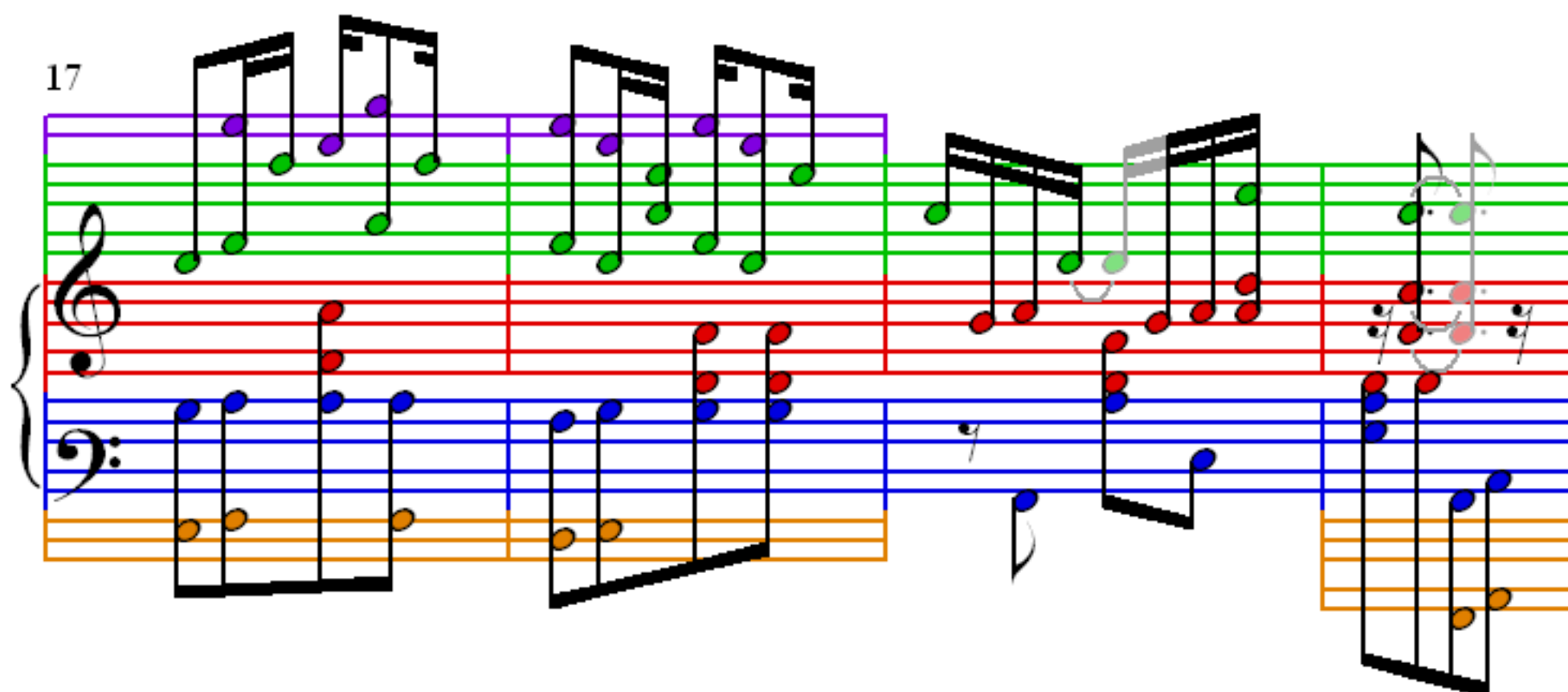
9

This system contains measures 9 through 12. The notation continues with eighth and sixteenth notes. A purple box highlights the final measure (measure 12), which contains a half note G4 and a half note F4 in the treble, and a half note D3 and a half note C3 in the bass.

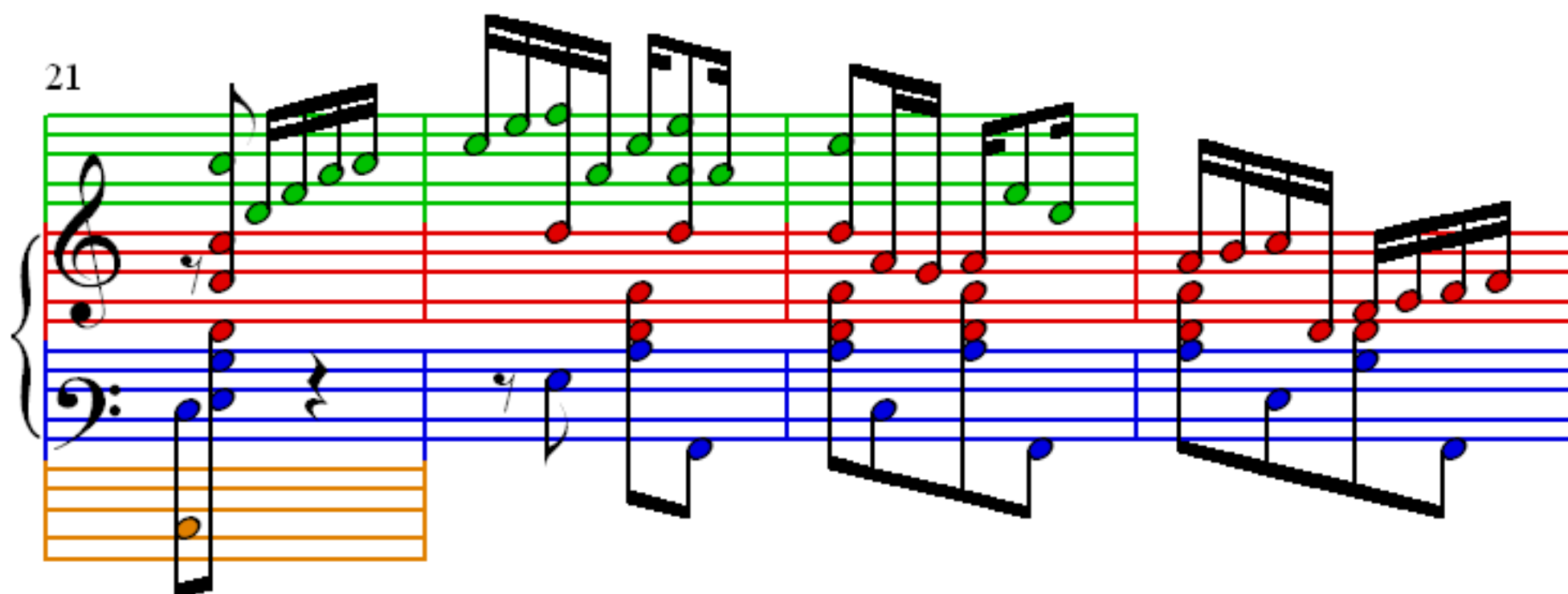
13



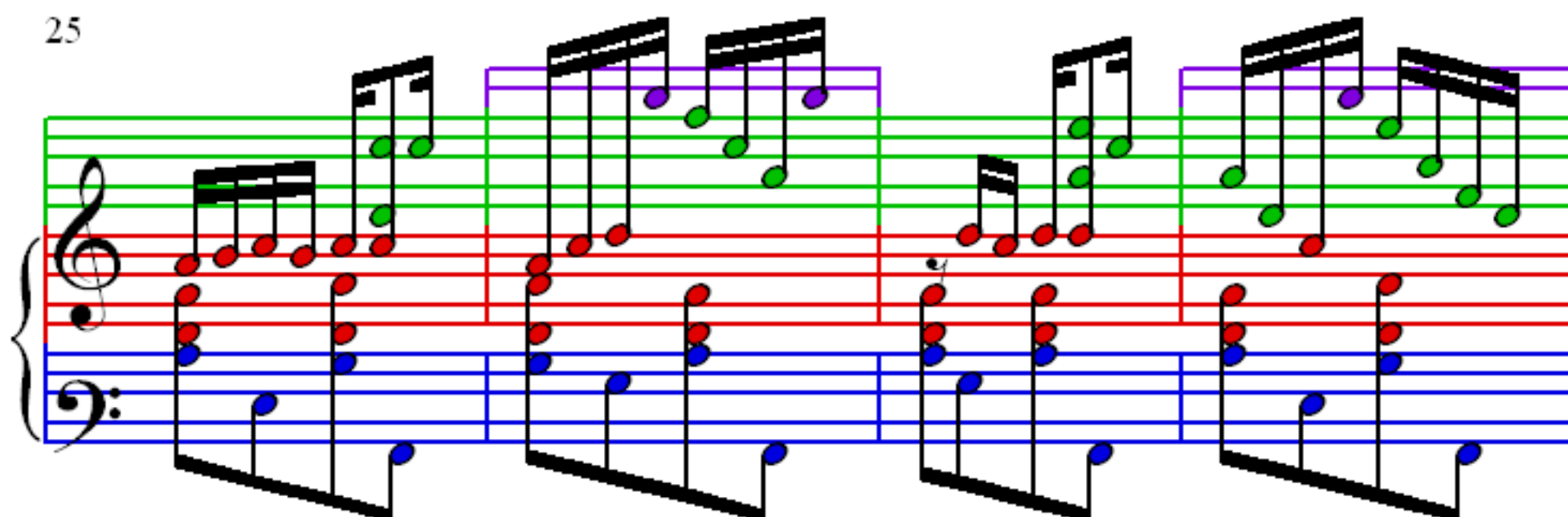
17



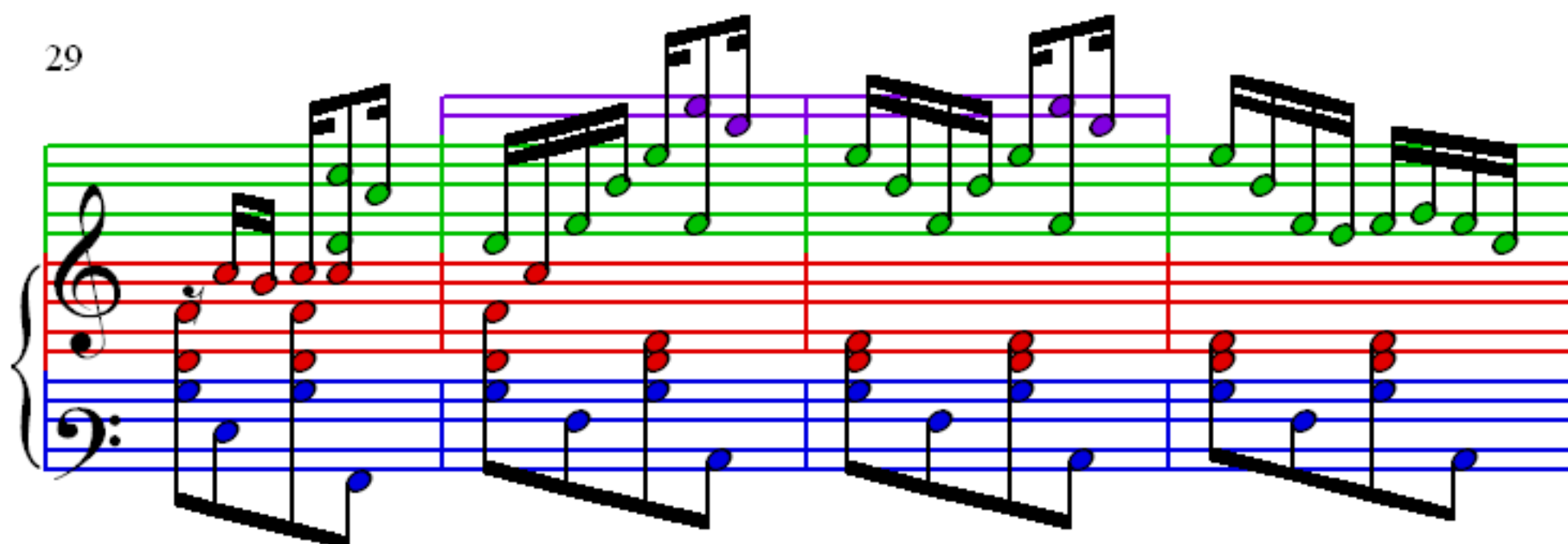
21



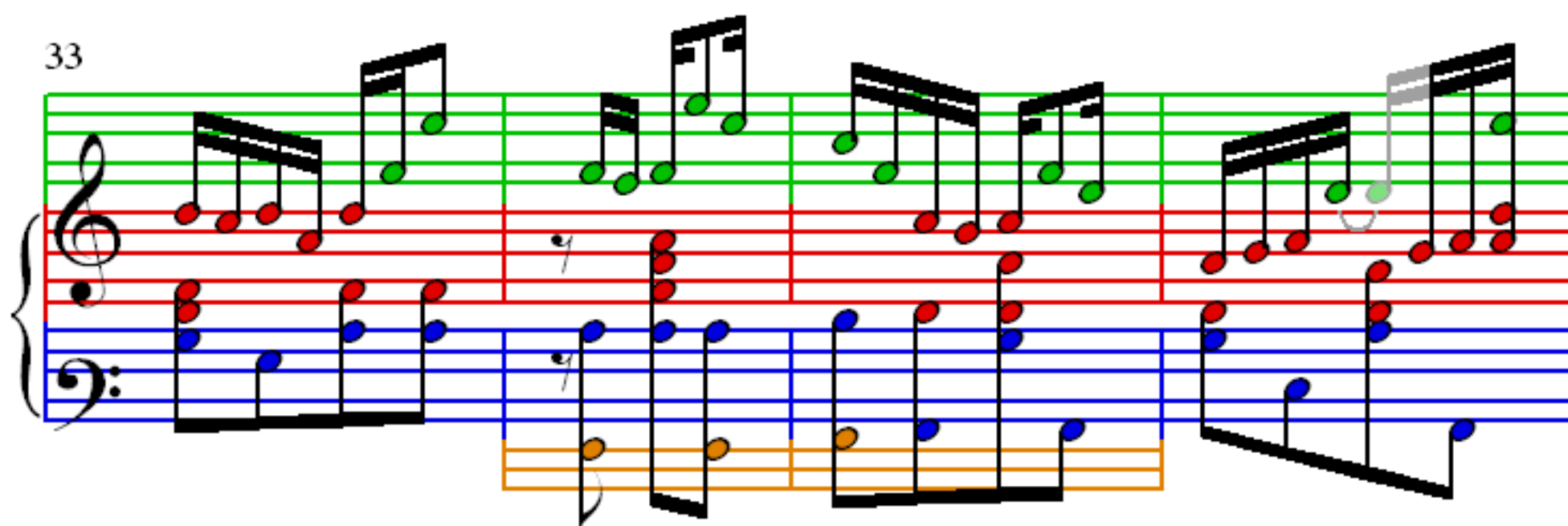
25



29



33



37

Measures 37-40. The score is written on a grand staff with treble and bass clefs. The treble staff has a green line and a red line. The bass staff has a blue line and a red line. The notes are colored green, red, and blue. A grey bracket highlights a measure in the treble staff. A grey bracket highlights a measure in the bass staff. A grey bracket highlights a measure in the bass staff.

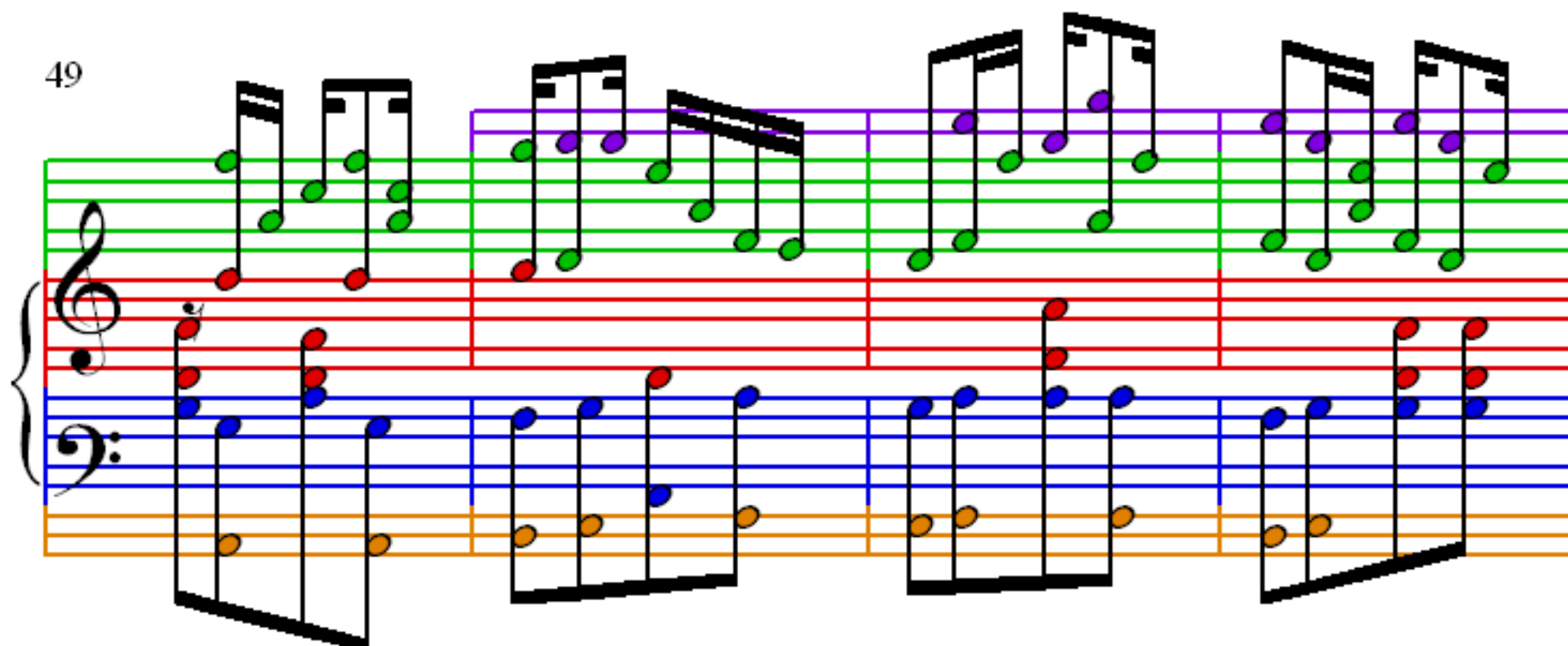
41

Measures 41-44. The score is written on a grand staff with treble and bass clefs. The treble staff has a green line and a red line. The bass staff has a blue line and a red line. The notes are colored green, red, and blue. A purple bracket highlights a measure in the treble staff. A grey bracket highlights a measure in the bass staff. A grey bracket highlights a measure in the bass staff.

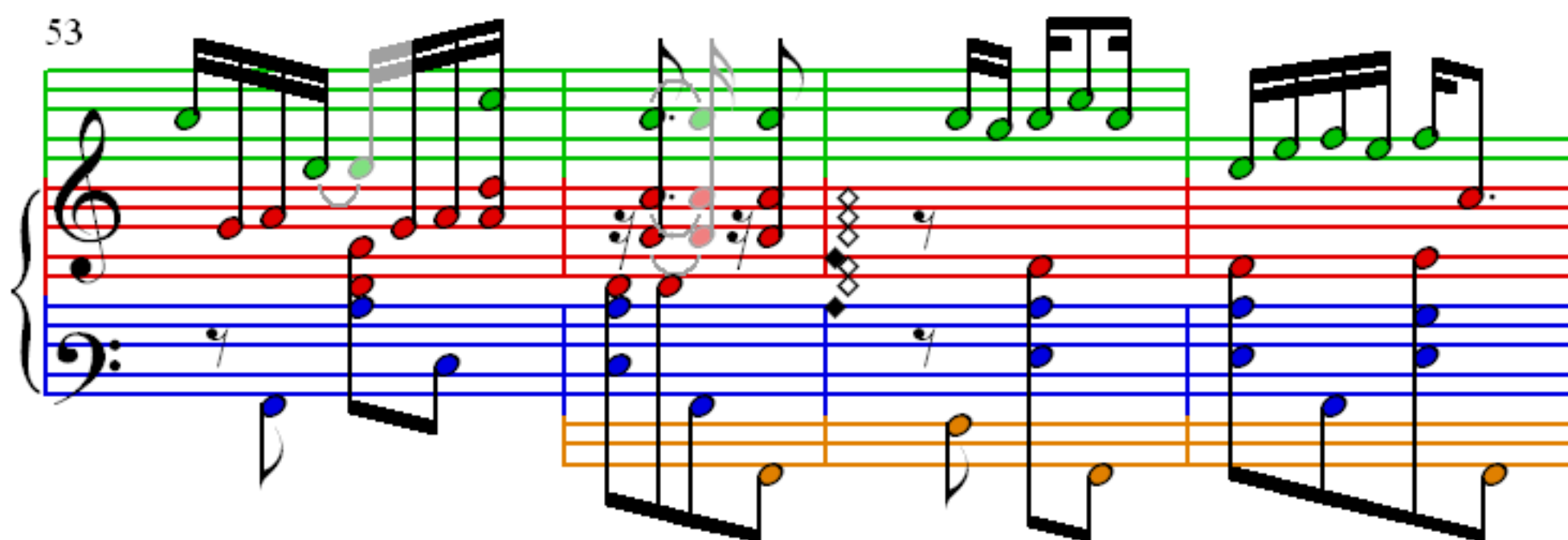
45

Measures 45-48. The score is written on a grand staff with treble and bass clefs. The treble staff has a green line and a red line. The bass staff has a blue line and a red line. The notes are colored green, red, and blue. A purple bracket highlights a measure in the treble staff. A grey bracket highlights a measure in the bass staff. A grey bracket highlights a measure in the bass staff.

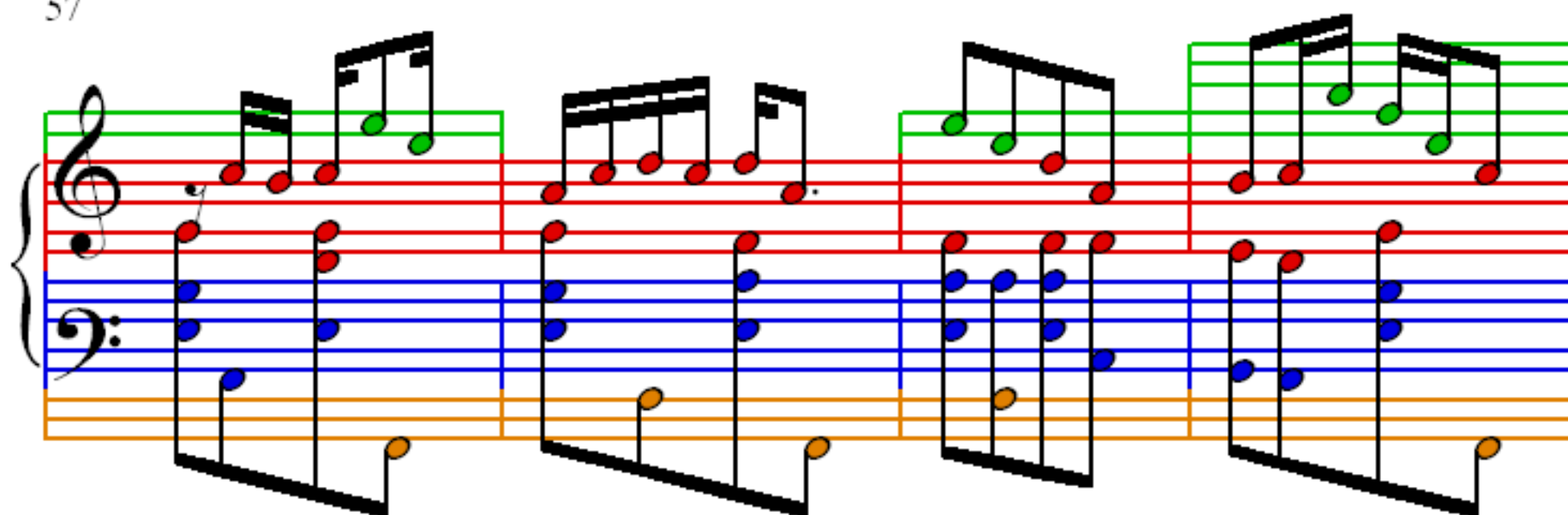
49



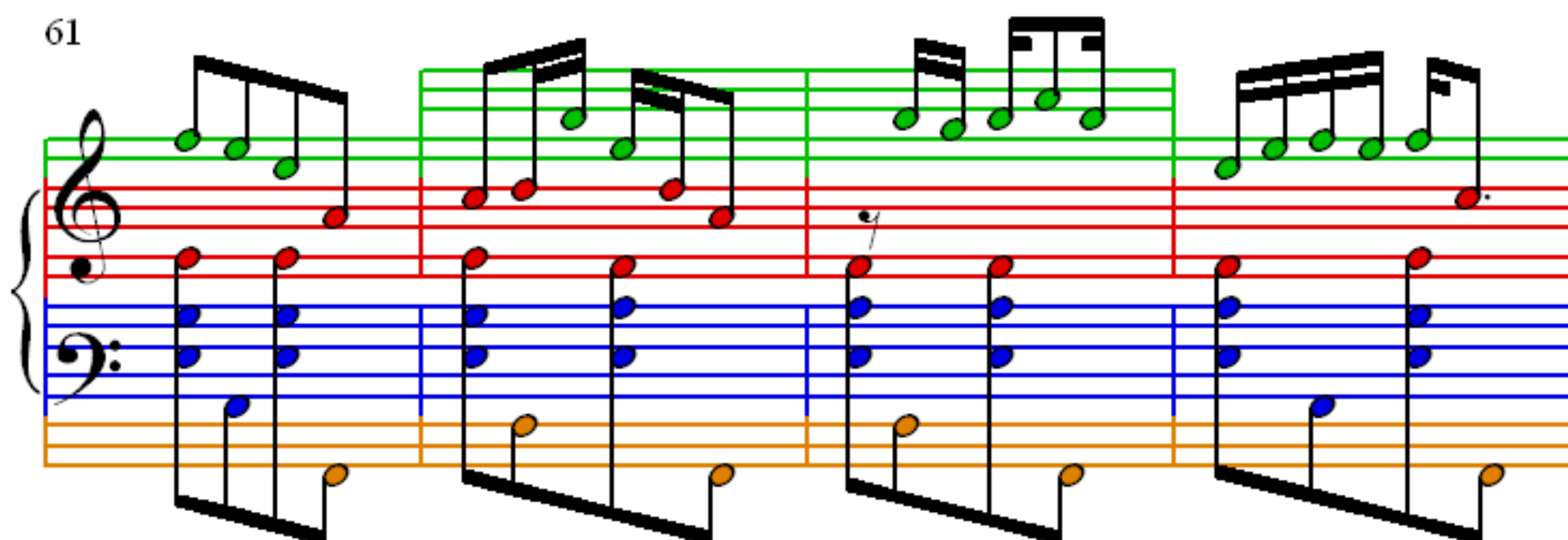
53



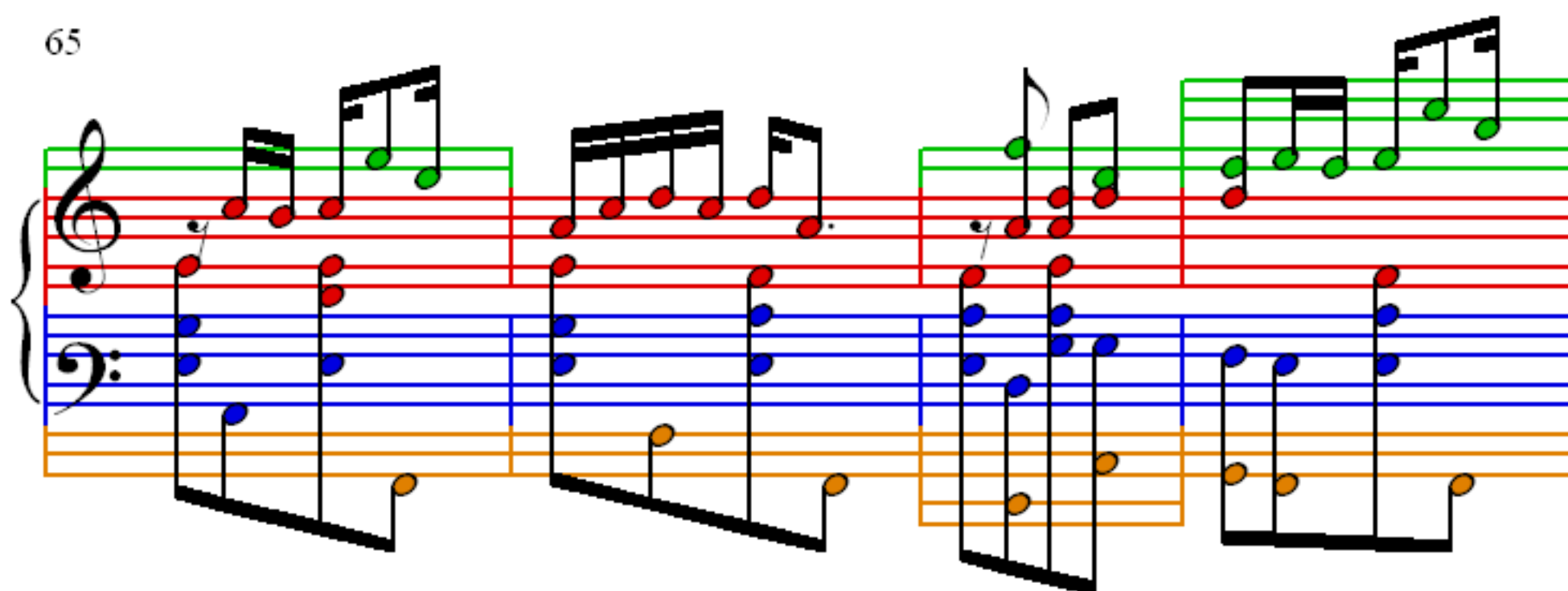
57



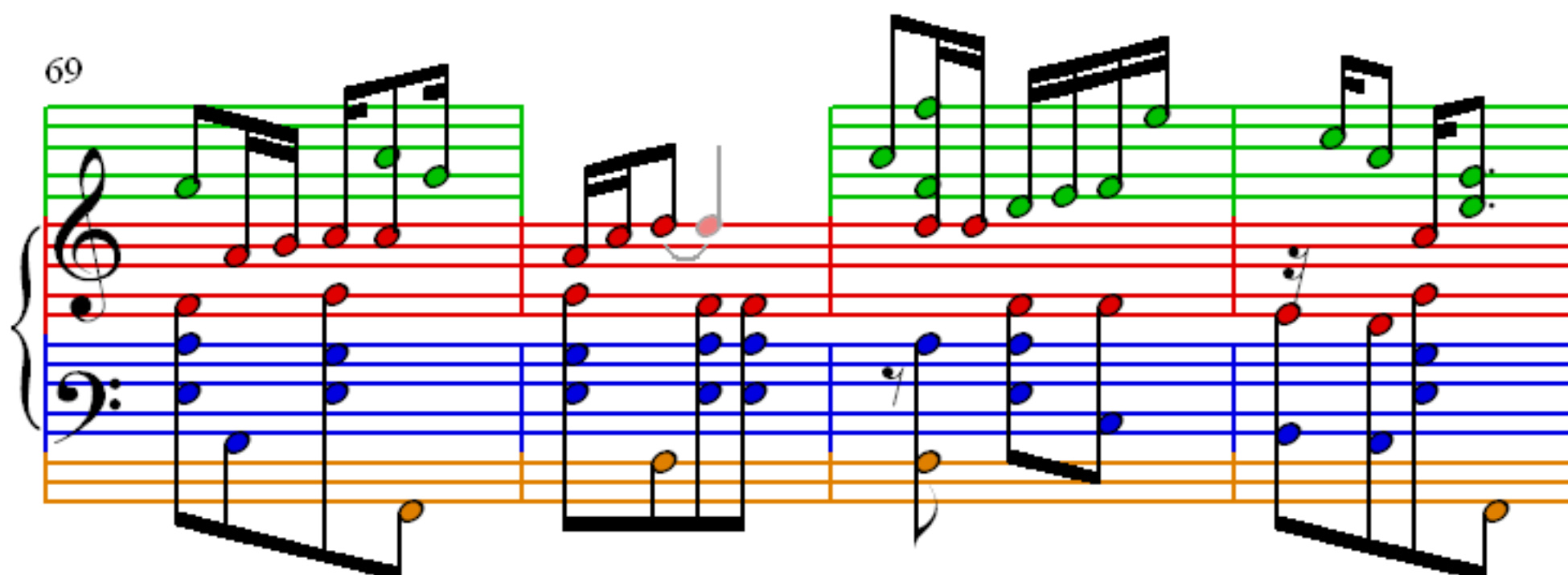
61



65



69





73

Measures 73-76 of a musical score. The score is written for piano (p) and features a treble and bass staff. The treble staff has a green line and a red line. The bass staff has a blue line and an orange line. The notes are colored: green for the treble staff and blue for the bass staff. The notes are grouped in measures, with some measures containing beamed eighth notes. The key signature is one flat (B-flat).

77

Measures 77-80 of a musical score. The score is written for piano (p) and features a treble and bass staff. The treble staff has a green line and a red line. The bass staff has a blue line and an orange line. The notes are colored: green for the treble staff and blue for the bass staff. The notes are grouped in measures, with some measures containing beamed eighth notes. The key signature is one flat (B-flat).

81

Measures 81-84 of a musical score. The score is written for piano (p) and features a treble and bass staff. The treble staff has a green line and a red line. The bass staff has a blue line and an orange line. The notes are colored: green for the treble staff and blue for the bass staff. The notes are grouped in measures, with some measures containing beamed eighth notes. The key signature is one flat (B-flat).

85

The musical score for measures 85-87 is presented in a grand staff format. The treble clef staff (top) has a green line and a red line. The bass clef staff (bottom) has a blue line and an orange line. A separate staff with a pink line is located below the bass clef staff. The notation includes various notes, rests, and slurs, indicating a complex melodic and harmonic structure. The notes are color-coded: green for the treble clef, blue for the bass clef, and orange for the separate staff. The pink line staff contains a single note in the final measure.