

S. Joplin (1868–1917)

S. Joplin (1868–1917)

The image displays the first eight measures of the piano introduction to 'The Entertainer' by Scott Joplin. The score is written for piano in 2/4 time, with a tempo marking of quarter note = 72. The key signature is one sharp (F#). The notation is presented in three systems, each with a grand staff (treble and bass clefs). The notes are color-coded: green for the right hand, blue for the left hand, and orange for the bass line. Measure numbers 1, 4, and 8 are indicated at the start of their respective systems. The first system (measures 1-3) shows the initial rhythmic pattern. The second system (measures 4-6) continues the pattern with some variations. The third system (measures 7-8) concludes the first section. The notation includes various musical symbols such as notes, rests, and bar lines.

12

16

20

24

Handwritten musical notation for measures 24 through 27. The notation is written on a grand staff with a treble clef and a bass clef. The notes are color-coded: green for the treble staff, red for the middle staff, blue for the bass staff, and orange for the bottom staff. Measure 24 shows a treble staff with a quarter note G4, an eighth note A4, and a quarter note B4, followed by a half note C5. The bass staff has a quarter note G2, an eighth note A2, and a quarter note B2, followed by a half note C3. Measures 25 and 26 show similar patterns with different note values. Measure 27 shows a treble staff with a quarter note G4, an eighth note A4, and a quarter note B4, followed by a half note C5. The bass staff has a quarter note G2, an eighth note A2, and a quarter note B2, followed by a half note C3.

28

Handwritten musical notation for measures 28 through 31. The notation is written on a grand staff with a treble clef and a bass clef. The notes are color-coded: green for the treble staff, red for the middle staff, blue for the bass staff, and orange for the bottom staff. Measure 28 shows a treble staff with a quarter note G4, an eighth note A4, and a quarter note B4, followed by a half note C5. The bass staff has a quarter note G2, an eighth note A2, and a quarter note B2, followed by a half note C3. Measures 29 and 30 show similar patterns with different note values. Measure 31 shows a treble staff with a quarter note G4, an eighth note A4, and a quarter note B4, followed by a half note C5. The bass staff has a quarter note G2, an eighth note A2, and a quarter note B2, followed by a half note C3.

32

Handwritten musical notation for measures 32 through 35. The notation is written on a grand staff with a treble clef and a bass clef. The notes are color-coded: green for the treble staff, red for the middle staff, blue for the bass staff, and orange for the bottom staff. Measure 32 shows a treble staff with a quarter note G4, an eighth note A4, and a quarter note B4, followed by a half note C5. The bass staff has a quarter note G2, an eighth note A2, and a quarter note B2, followed by a half note C3. Measures 33 and 34 show similar patterns with different note values. Measure 35 shows a treble staff with a quarter note G4, an eighth note A4, and a quarter note B4, followed by a half note C5. The bass staff has a quarter note G2, an eighth note A2, and a quarter note B2, followed by a half note C3.

36

This system contains measures 36 through 39. The treble clef staff features a melody of eighth notes, with green dots on the notes and red dots on the stems. The bass clef staff provides a harmonic accompaniment with blue notes on the stems and orange notes on the bass line. A grey oval highlights a specific chord in measure 37, and another grey oval highlights a chord in measure 39.

40

This system contains measures 40 through 43. The treble clef staff continues the melody, with green dots on the notes and red dots on the stems. The bass clef staff continues the harmonic accompaniment with blue notes on the stems and orange notes on the bass line. A grey oval highlights a specific chord in measure 40, and another grey oval highlights a chord in measure 43.

44

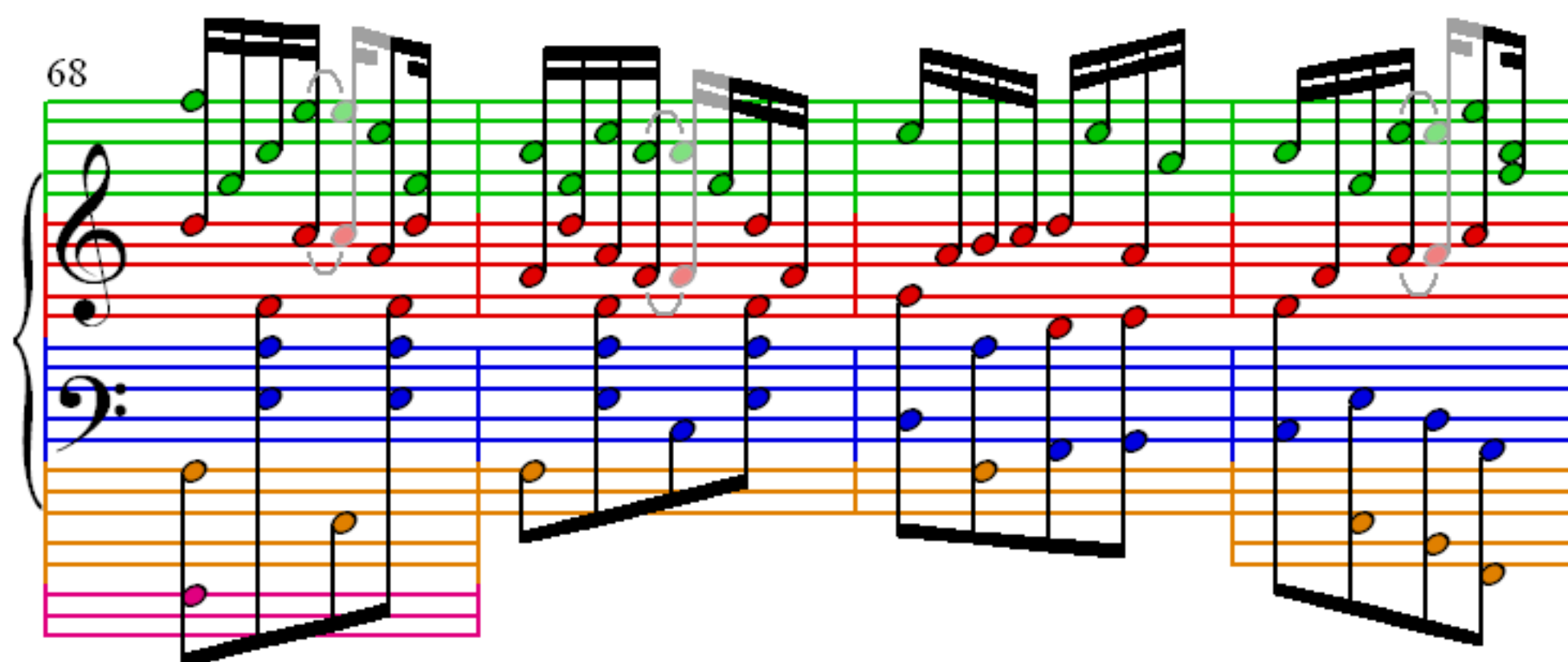
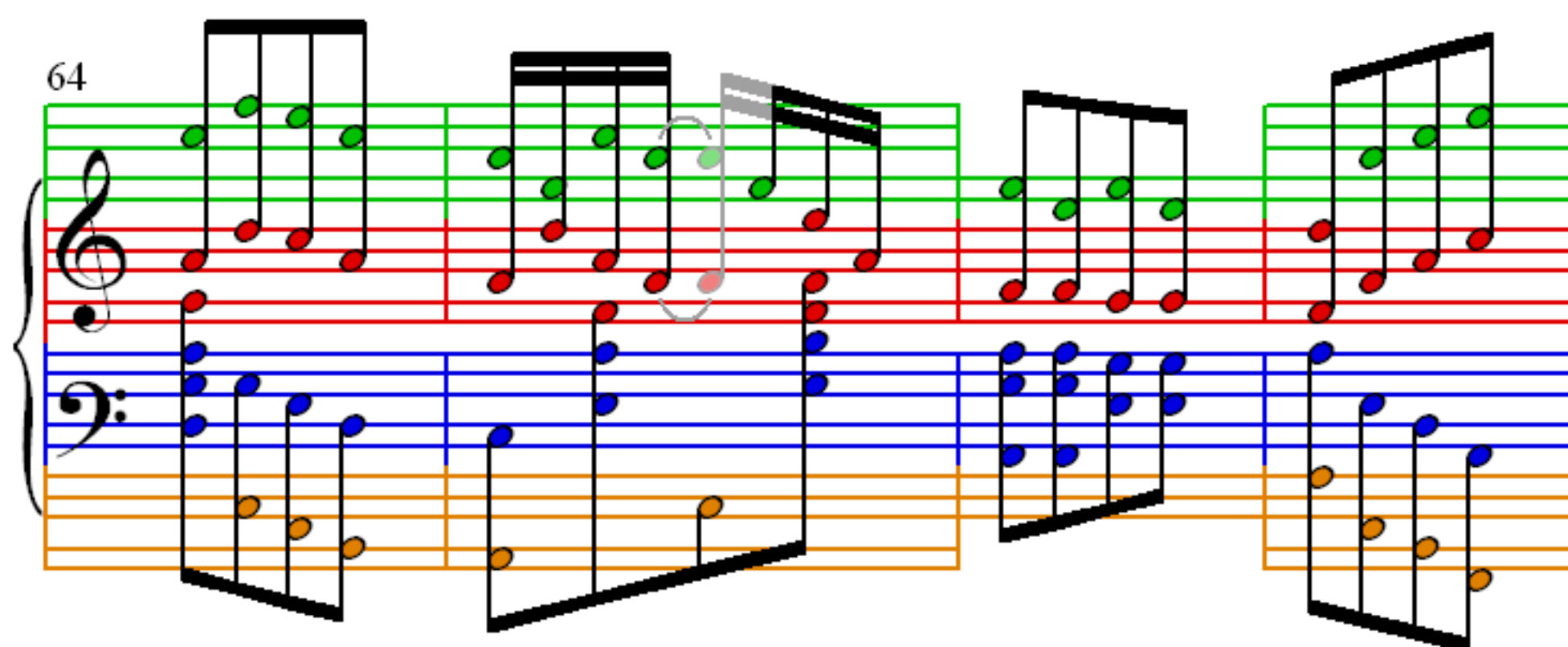
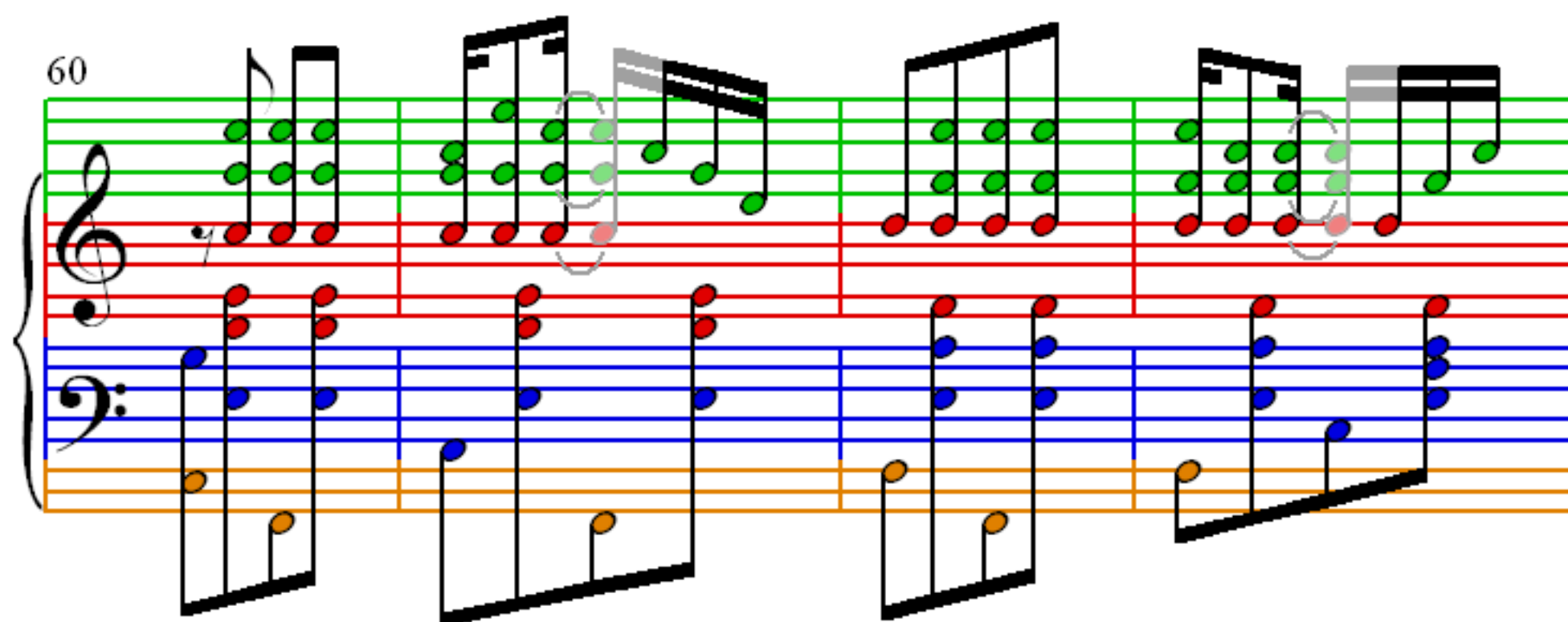
This system contains measures 44 through 47. The treble clef staff continues the melody, with green dots on the notes and red dots on the stems. The bass clef staff continues the harmonic accompaniment with blue notes on the stems and orange notes on the bass line. A grey oval highlights a specific chord in measure 44, and another grey oval highlights a chord in measure 47.

48

52

56



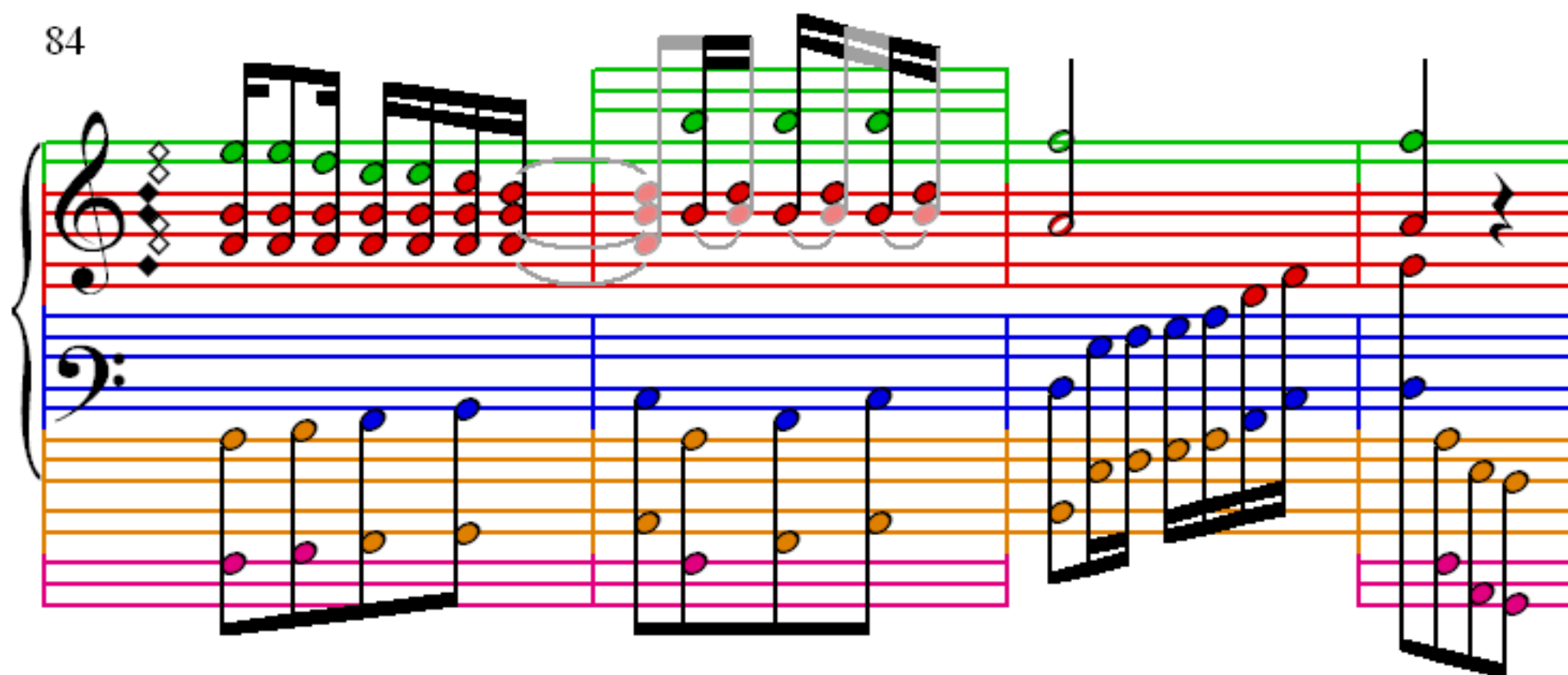


72

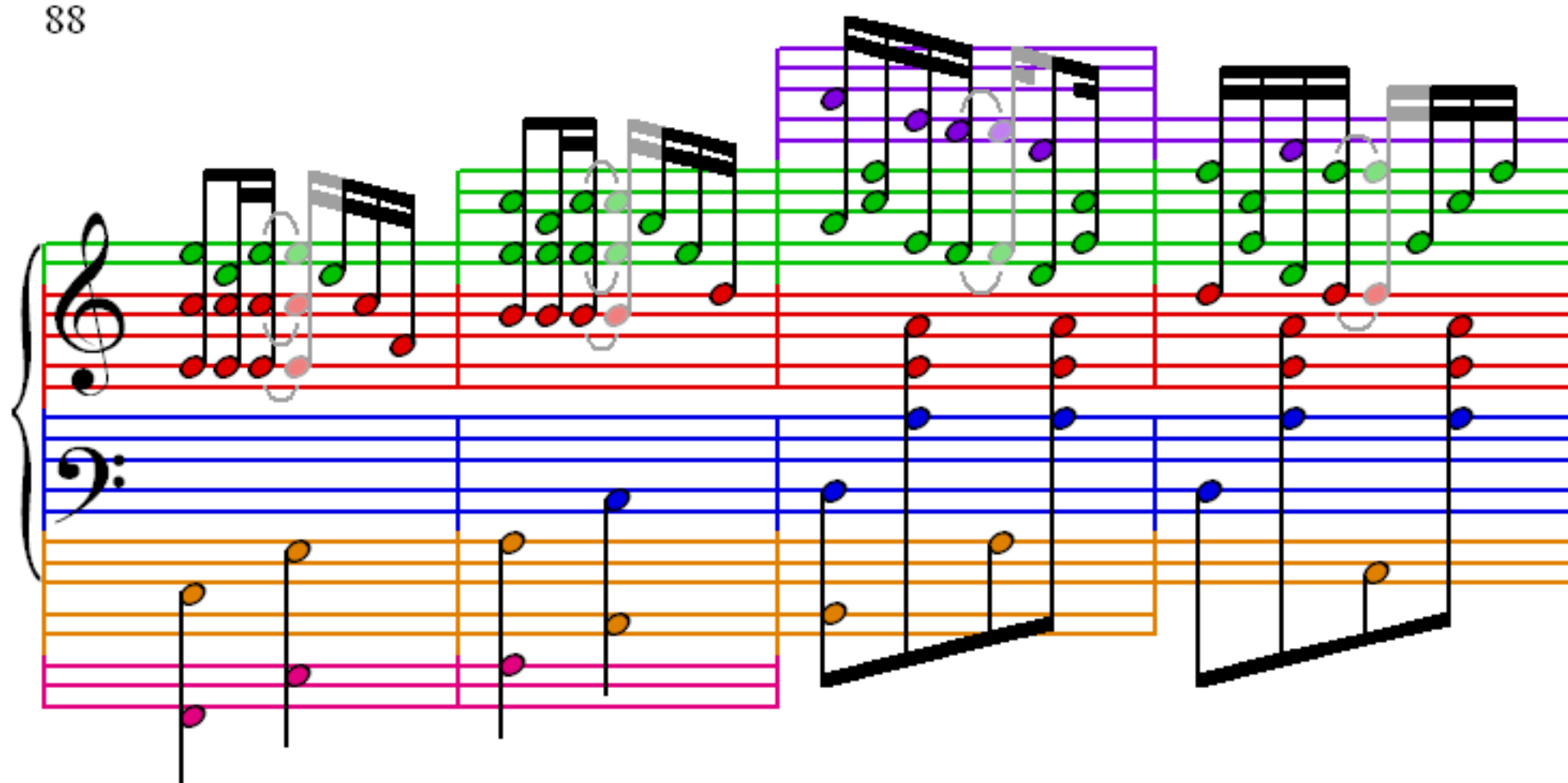
76

80

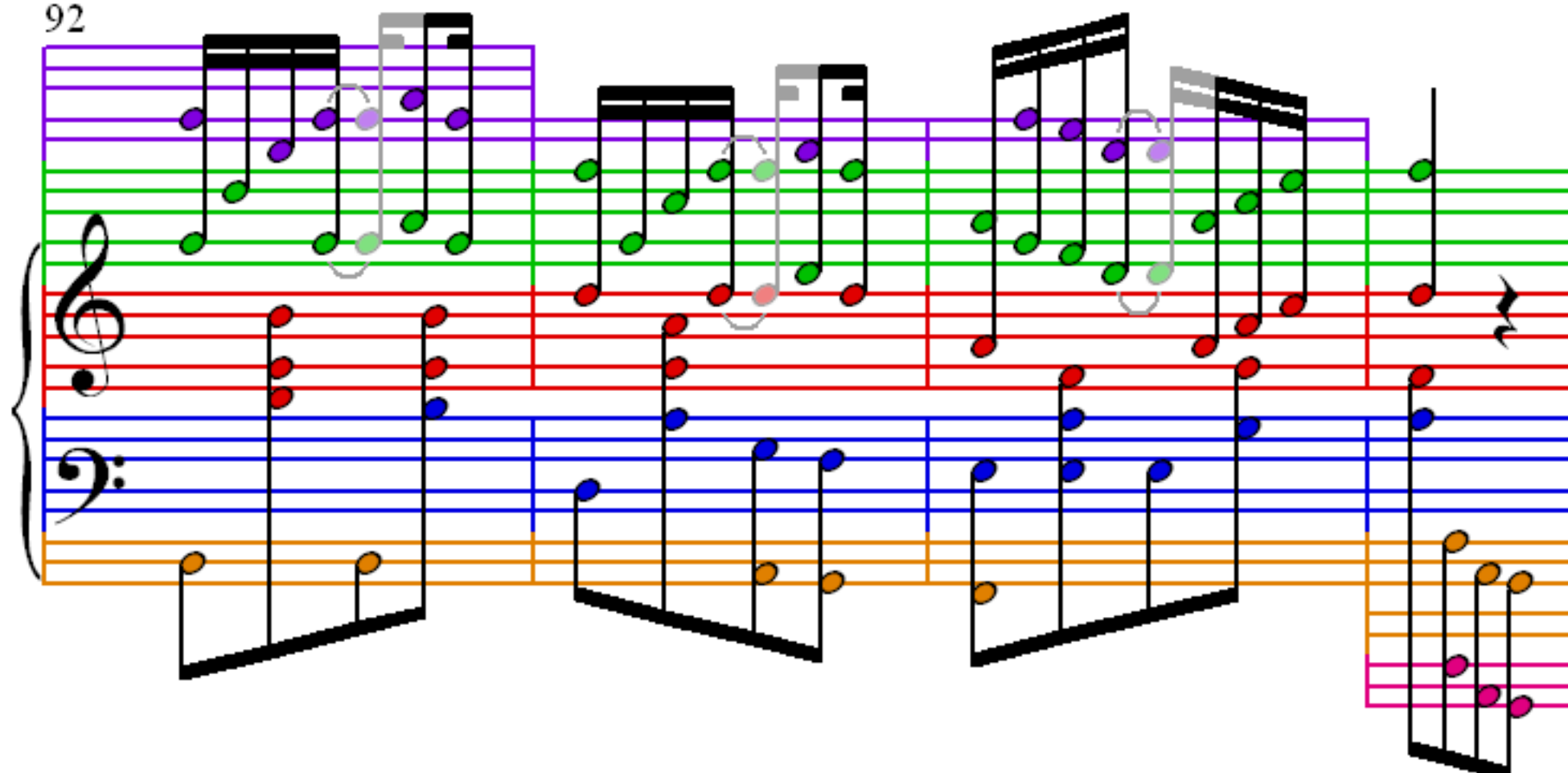
84



88



92





Measures 96-99 of the musical score. The score is written for piano with a grand staff (treble and bass clefs). The treble staff features a complex melody with many beamed eighth and sixteenth notes, some of which are highlighted in green and purple. The bass staff provides a harmonic accompaniment with notes in blue, orange, and pink. The music is divided into four measures, with measure 99 ending with a double bar line.

100

Measures 100-103 of the musical score. The treble staff continues the complex melodic line with various note colors (green, purple, red). The bass staff accompaniment uses blue, orange, and pink notes. Measure 103 ends with a double bar line.

104

Measures 104-107 of the musical score. The treble staff features the same complex melodic pattern as the previous system. The bass staff accompaniment remains consistent with blue, orange, and pink notes. Measure 107 ends with a double bar line.

108

Measures 108-111 of the musical score. The system features a grand staff with a treble clef and a bass clef. The treble staff has a purple staff line above it. The bass staff has a blue staff line above it. The notes are color-coded: purple, green, red, blue, and orange. Measure 108 shows a complex chordal structure with many notes. Measures 109-111 show a more simplified structure with fewer notes. A pink staff line is visible at the bottom right of the system.

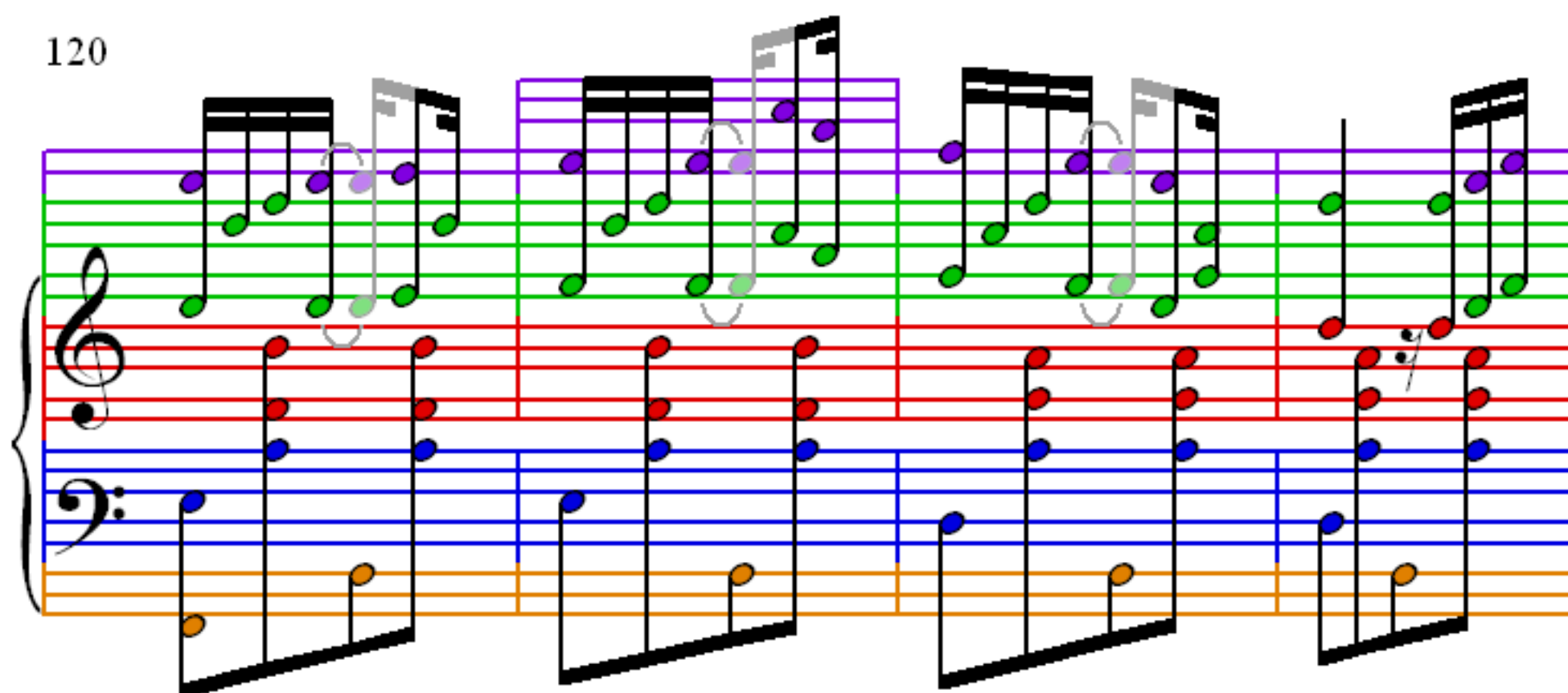
112

Measures 112-115 of the musical score. The system features a grand staff with a treble clef and a bass clef. The treble staff has a purple staff line above it. The bass staff has a blue staff line above it. The notes are color-coded: purple, green, red, blue, and orange. Measure 112 shows a complex chordal structure with many notes. Measures 113-115 show a more simplified structure with fewer notes. A pink staff line is visible at the bottom right of the system.

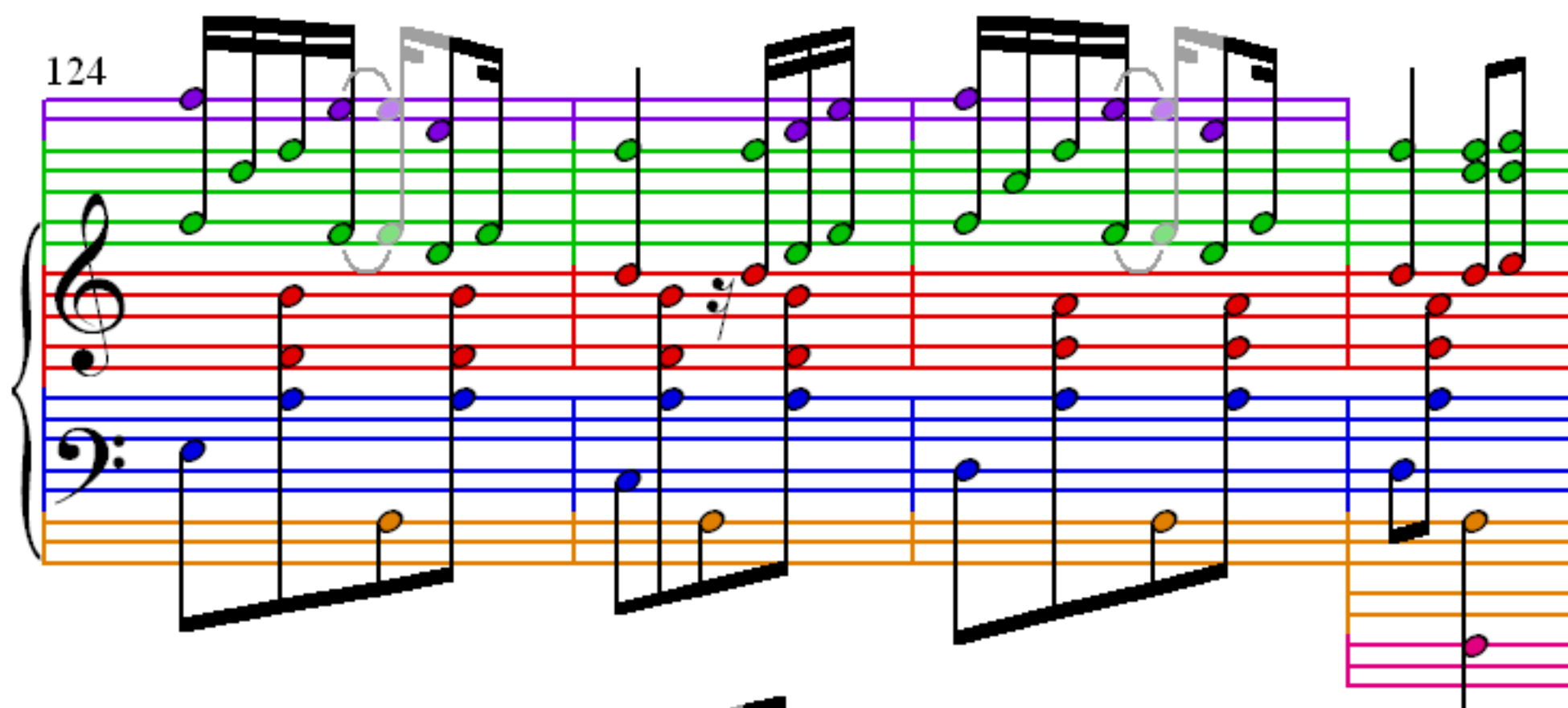
116

Measures 116-119 of the musical score. The system features a grand staff with a treble clef and a bass clef. The treble staff has a purple staff line above it. The bass staff has a blue staff line above it. The notes are color-coded: purple, green, red, blue, and orange. Measure 116 shows a complex chordal structure with many notes. Measures 117-119 show a more simplified structure with fewer notes. A pink staff line is visible at the bottom right of the system.

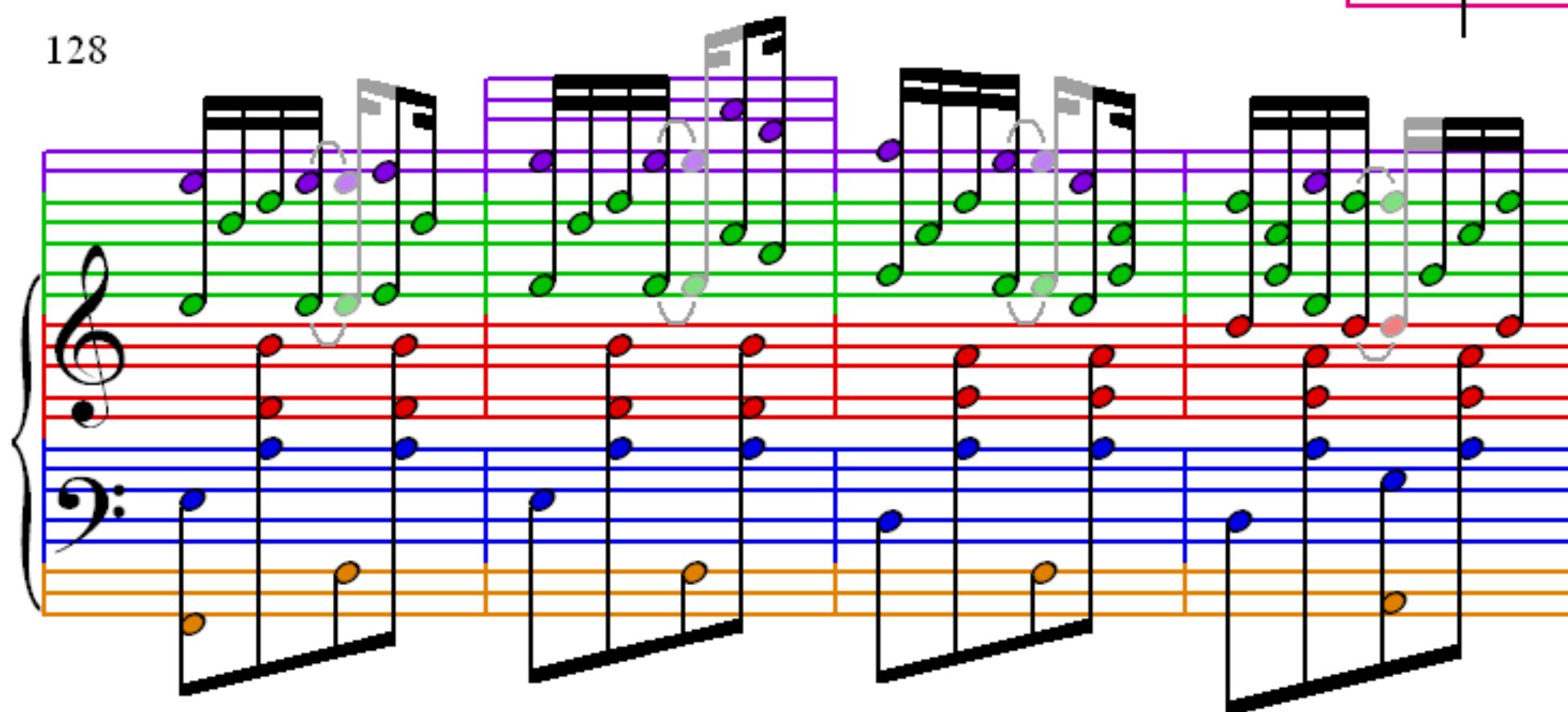
120



124



128



132

Measures 132-135. Treble clef: purple, green, and red notes. Bass clef: blue, orange, and pink notes. Measure 135 has a greyed-out measure with a slur.

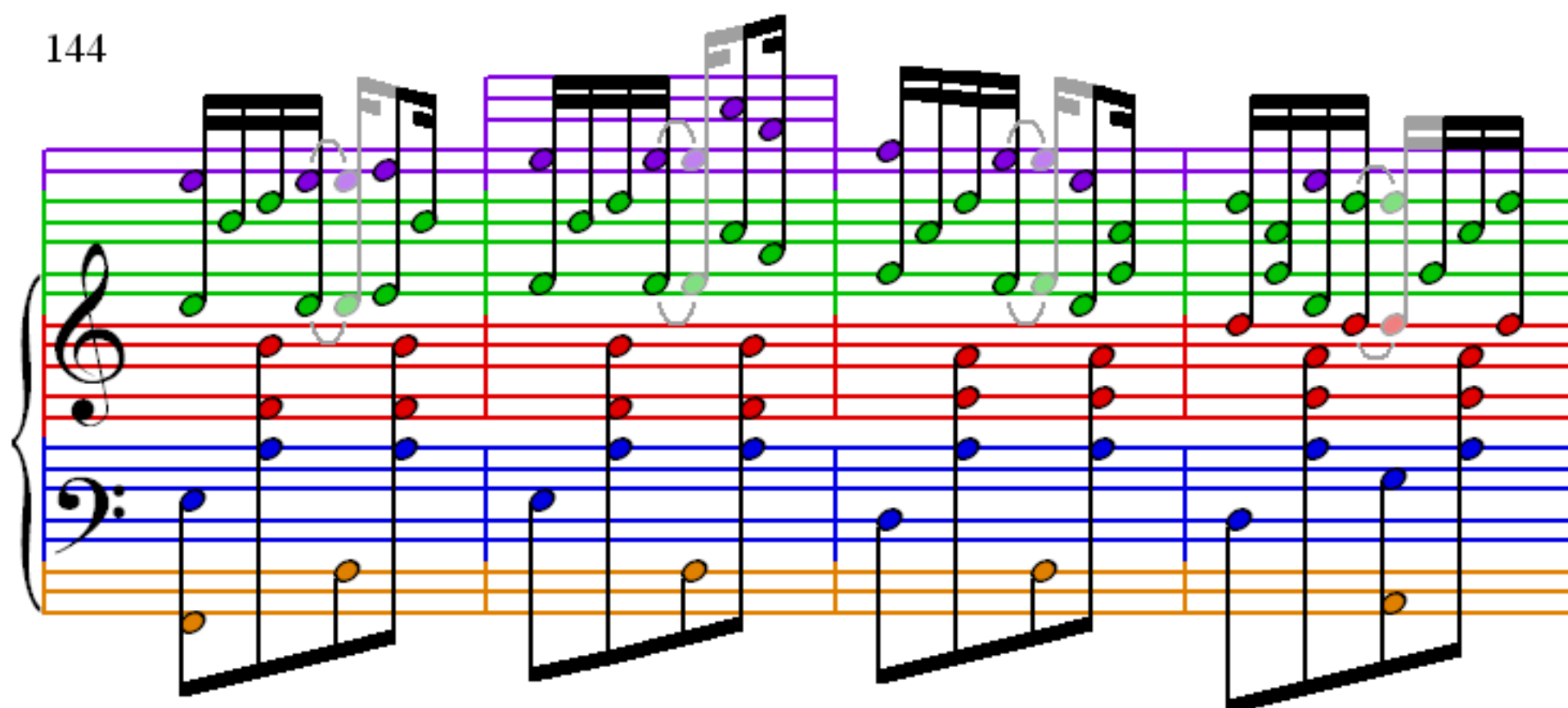
136

Measures 136-140. Treble clef: purple, green, and red notes. Bass clef: blue, orange, and pink notes. Measure 140 has a greyed-out measure with a slur.

140

Measures 140-144. Treble clef: purple, green, and red notes. Bass clef: blue, orange, and pink notes. Measure 144 has a greyed-out measure with a slur.

144



148

