

Old Deuteronomy

Andrew Lloyd Webber

$\text{♩} = 100$

1

Measures 1-4 of the piece. The music is in 3/4 time, indicated by a 3 over 4 time signature. The key signature has one sharp (F#). The melody is in the treble clef, and the bass line is in the bass clef. The melody consists of quarter notes and half notes, with some notes marked with a red dot. The bass line consists of half notes and quarter notes, with some notes marked with a blue dot.

5

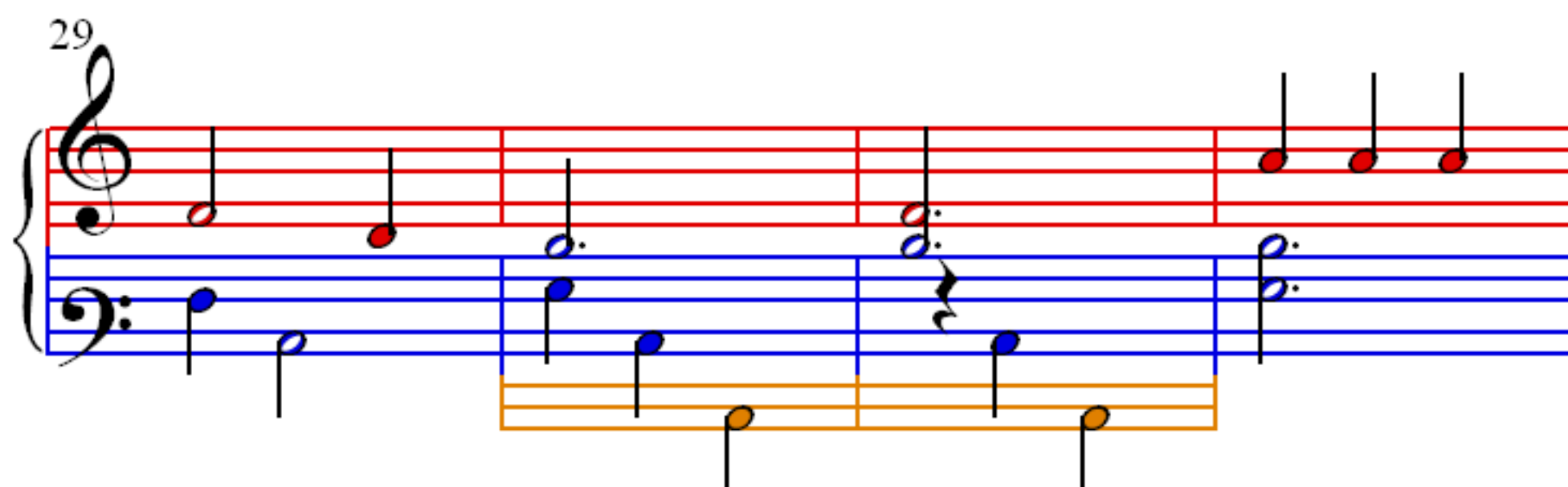
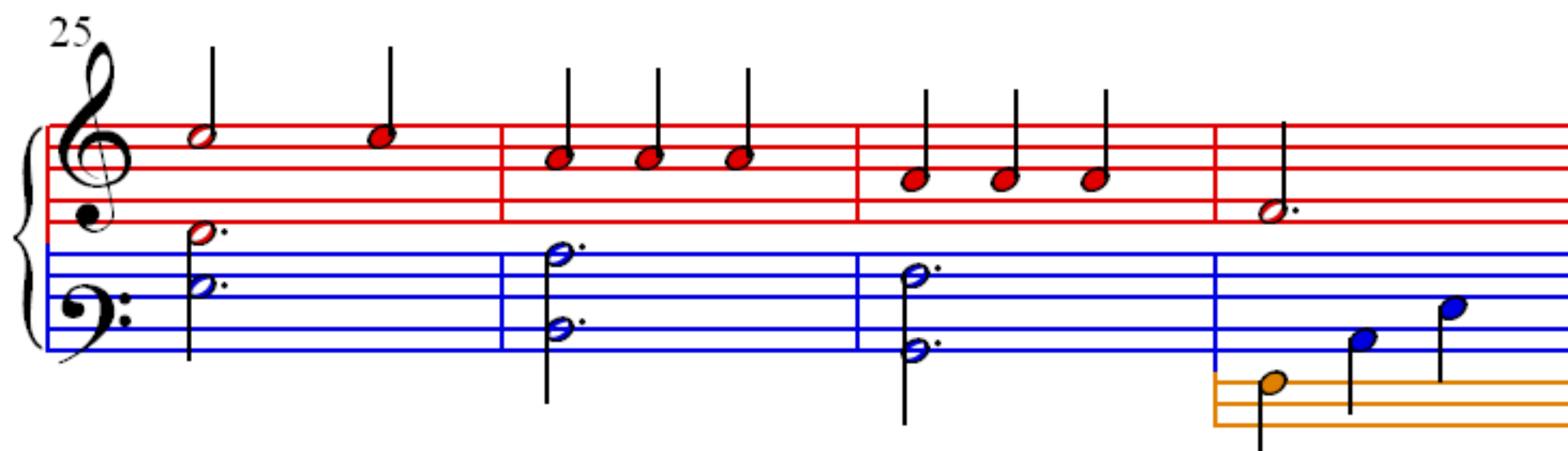
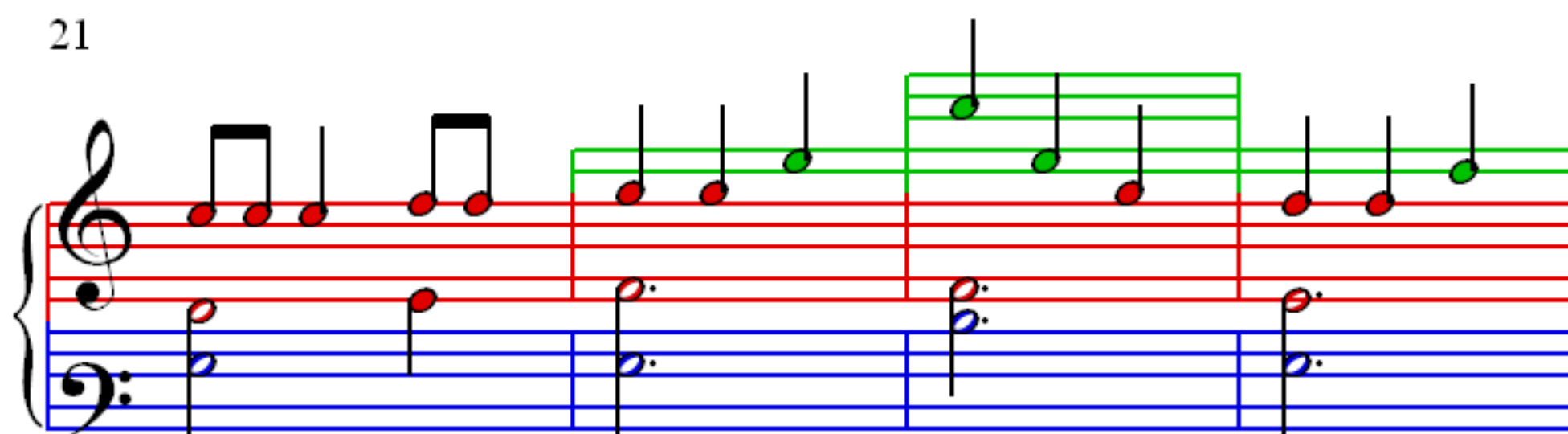
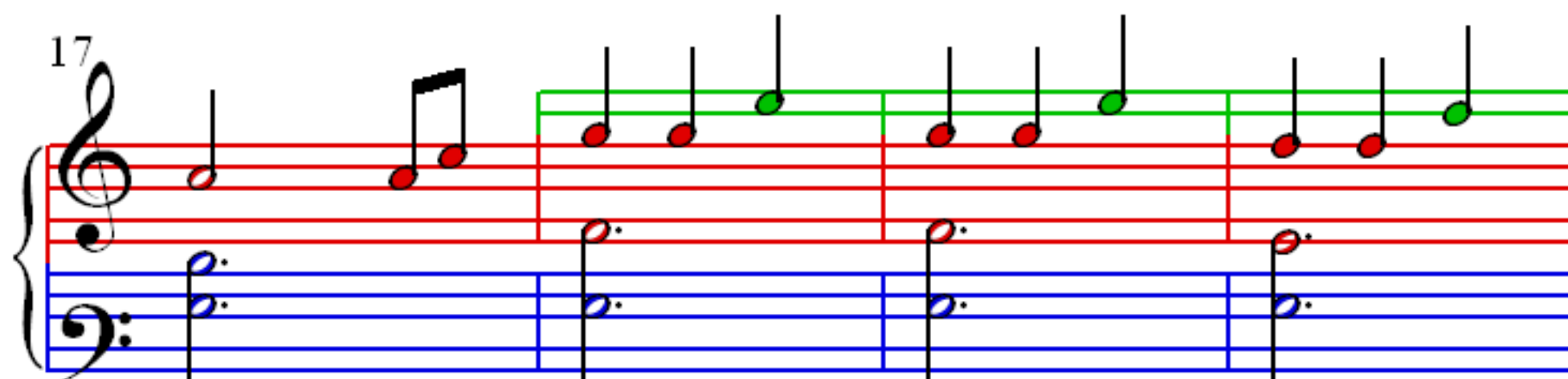
Measures 5-8 of the piece. The melody continues with quarter notes and half notes, with some notes marked with a green dot. The bass line continues with half notes and quarter notes, with some notes marked with a blue dot.

9

Measures 9-12 of the piece. The melody continues with quarter notes and half notes, with some notes marked with a green dot. The bass line continues with half notes and quarter notes, with some notes marked with a blue dot. There is a change in the bass line starting at measure 10, with notes marked with an orange dot.

13

Measures 13-16 of the piece. The melody continues with quarter notes and half notes, with some notes marked with a green dot. The bass line continues with half notes and quarter notes, with some notes marked with a blue dot. There is a change in the bass line starting at measure 14, with notes marked with an orange dot. The piece ends with a double bar line and repeat dots.



33

Measures 33-36. Treble clef: Measure 33 has two red notes. Measure 34 has two red notes. Measure 35 has two red notes, one green. Measure 36 has two red notes, one green. Bass clef: Measure 33 has one blue note. Measure 34 has one blue note. Measure 35 has one blue note. Measure 36 has one blue note, slurred.

37

Measures 37-40. Treble clef: Measure 37 has two red notes. Measure 38 has two red notes. Measure 39 has two red notes. Measure 40 has two red notes, one green. Bass clef: Measure 37 has one blue note, slurred. Measure 38 has one blue note. Measure 39 has one blue note. Measure 40 has one blue note.

41

Measures 41-44. Treble clef: Measure 41 has two red notes. Measure 42 has two red notes. Measure 43 has two red notes, one green. Measure 44 has two red notes, one green. Bass clef: Measure 41 has one blue note, slurred. Measure 42 has one blue note. Measure 43 has one blue note. Measure 44 has one blue note.

45

Measure 45. Treble clef: Empty. Bass clef: One blue note.