

The Phantom of the Opera

A Lloyd-Webber

$\bullet = 120$

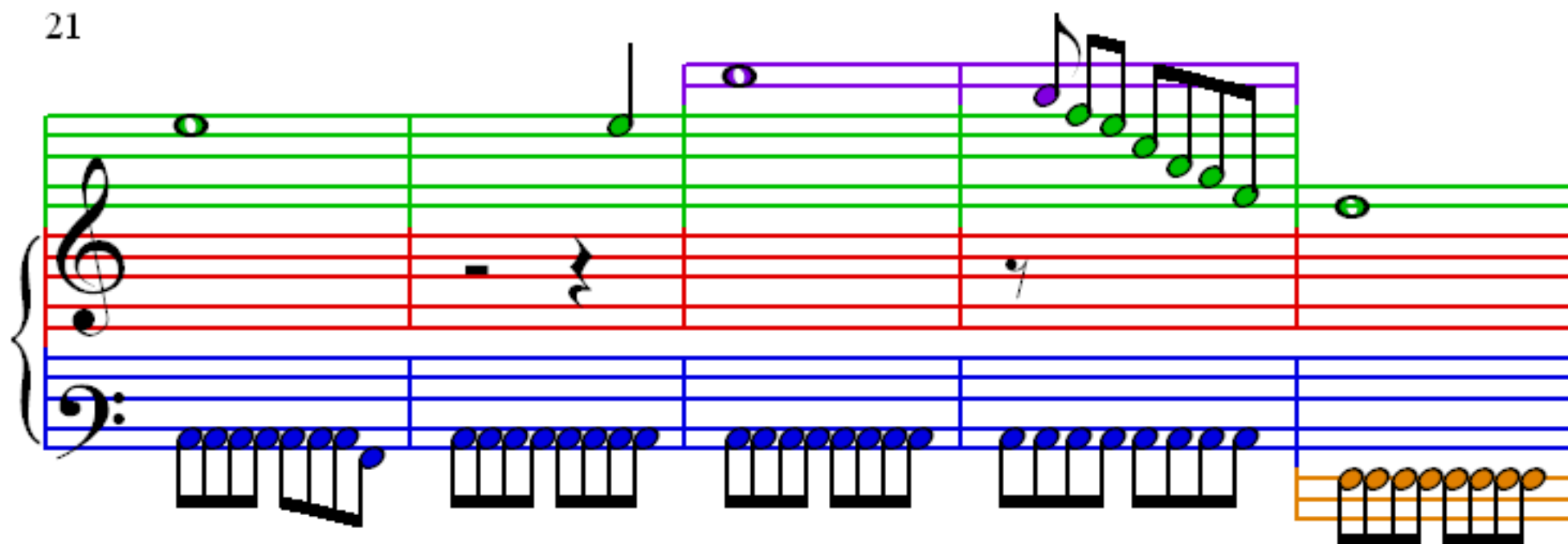
1

6

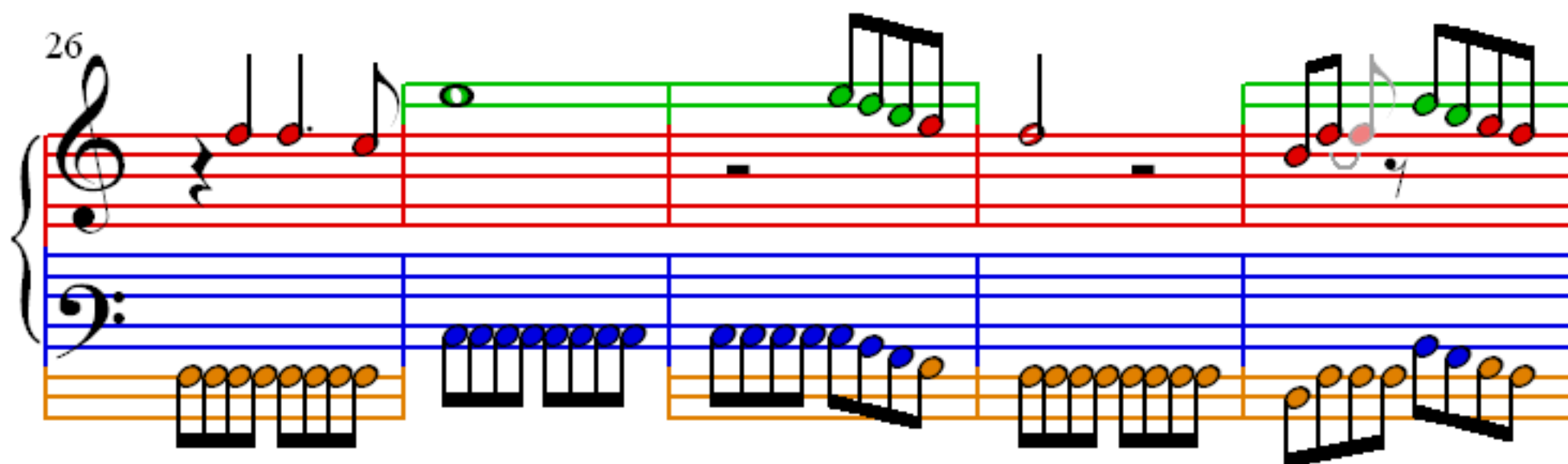
11

16

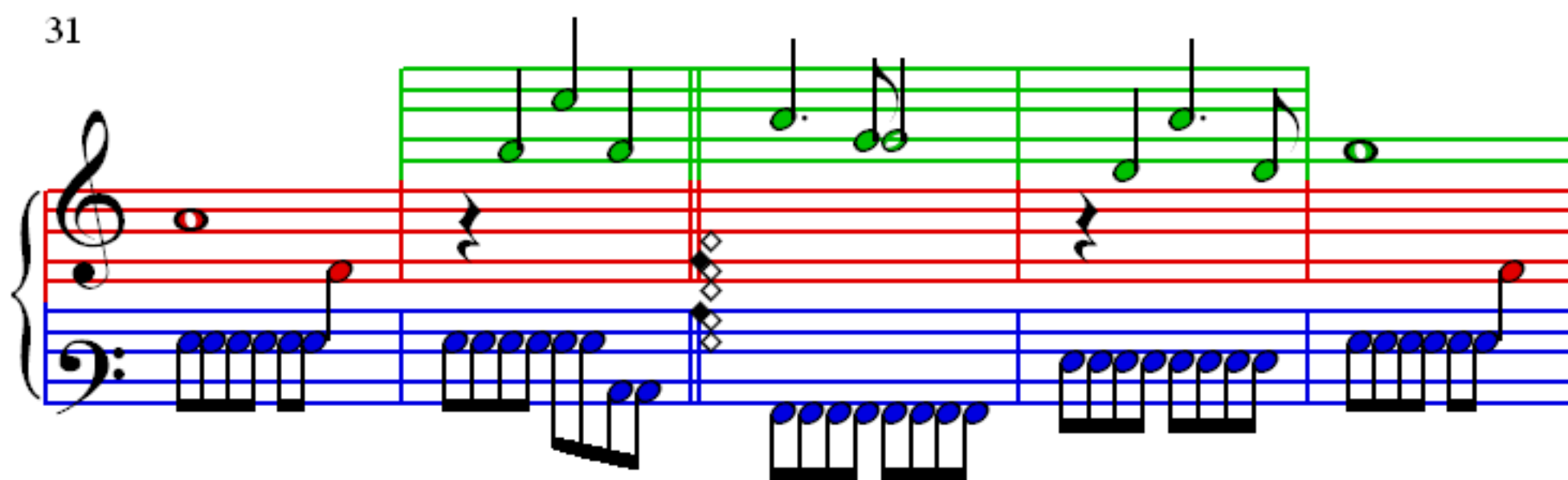
21



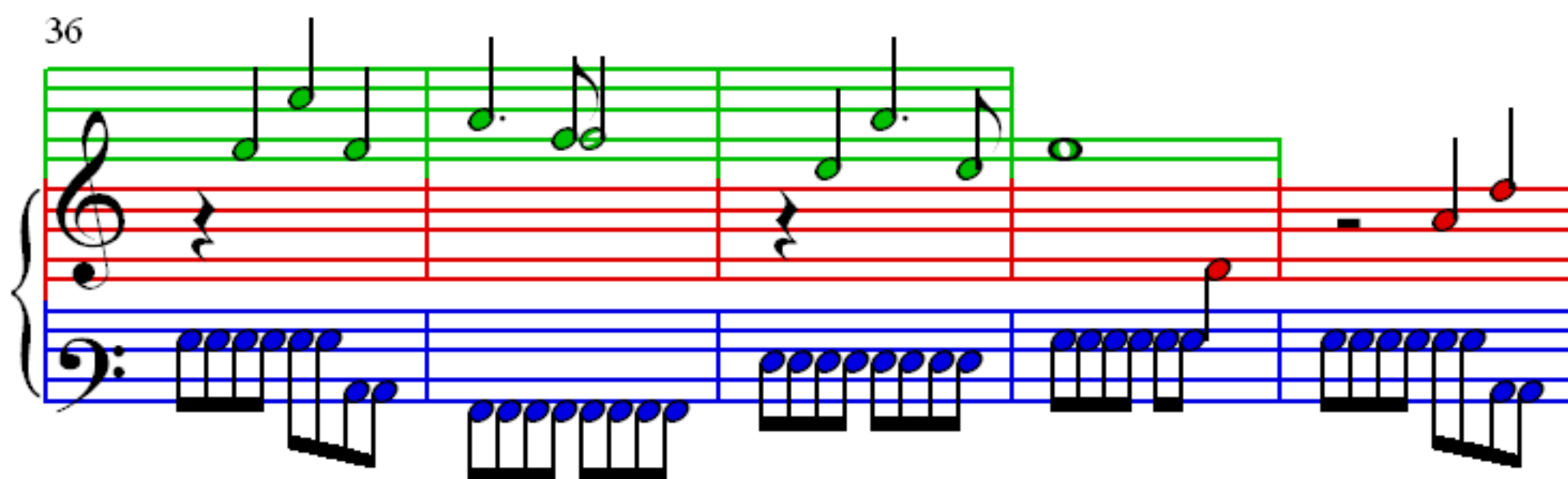
26



31



36



41

Measures 41-45 of the musical score. The treble clef staff features a melody with green and red notes, including a whole note and a half note. The bass clef staff contains a continuous eighth-note accompaniment in blue. A double bar line is present after measure 43.

46

Measures 46-50 of the musical score. The treble clef staff continues the melody with green and red notes, featuring a half note and a whole note. The bass clef staff maintains the eighth-note accompaniment in blue. A double bar line is present after measure 48.

51

Measures 51-55 of the musical score. The treble clef staff shows a melody with green and red notes, including a whole note and a half note. The bass clef staff continues the eighth-note accompaniment in blue. A double bar line is present after measure 53.

56

Measures 56-60 of the musical score. The treble clef staff features a melody with green and red notes, including a whole note and a half note. The bass clef staff continues the eighth-note accompaniment in blue. A double bar line is present after measure 58.

61

Measures 61-65 of the musical score. The treble clef staff shows a melody with green and red notes, including a whole note and a half note. The bass clef staff continues the eighth-note accompaniment in blue. A double bar line is present after measure 63.

66

Measures 66-70: The treble staff begins with a whole rest, followed by a half note G4, a quarter note A4, and a half note B4. The bass staff features a steady eighth-note accompaniment. A green line is drawn above the treble staff for measures 67-68, and an orange line is drawn below the bass staff for measures 66-67.

71

Measures 71-75: The treble staff continues the melody with a half note C5, a quarter note D5, and a half note E5. The bass staff continues the eighth-note accompaniment. A green line is drawn above the treble staff for measures 74-75.

76

Measures 76-80: The treble staff features a melody with a green line above it for measures 76-77 and a red line below it for measures 78-79. The bass staff continues the eighth-note accompaniment. A green line is drawn above the treble staff for measures 76-77, and a red line is drawn below the treble staff for measures 78-79.

81

Measures 81-85: The treble staff continues the melody with a green line above it for measures 81-82 and a red line below it for measures 83-84. The bass staff continues the eighth-note accompaniment. A green line is drawn above the treble staff for measures 81-82, and a red line is drawn below the treble staff for measures 83-84.

86

91

96

101

106

106-110

111

111-115

116

116-120

121

121-124