

Andante

Wolfgang Amadeus Mozart

$\text{♩} = 100$

from Sinfonia Concertante K 364

Walking speed

Gradually louder

1

3

5

7

mp

mp

mp

1 2 1 3 4

9

1

11

13

15

2

p

17

3 5

2 4

19

3

21

Gradually louder

1 5

1 3

23

2

p

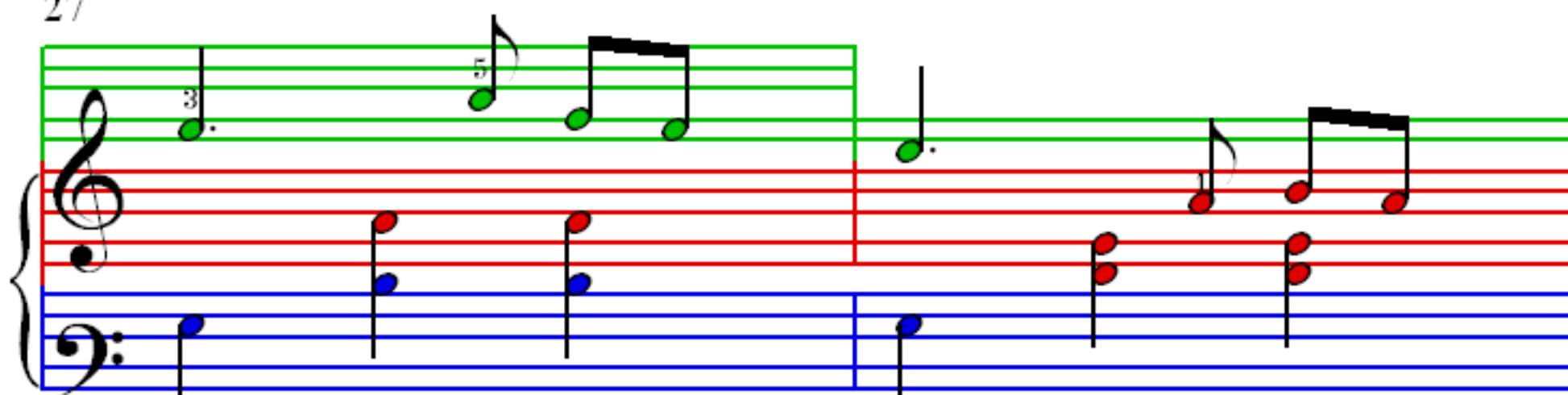
25

Gradually louder

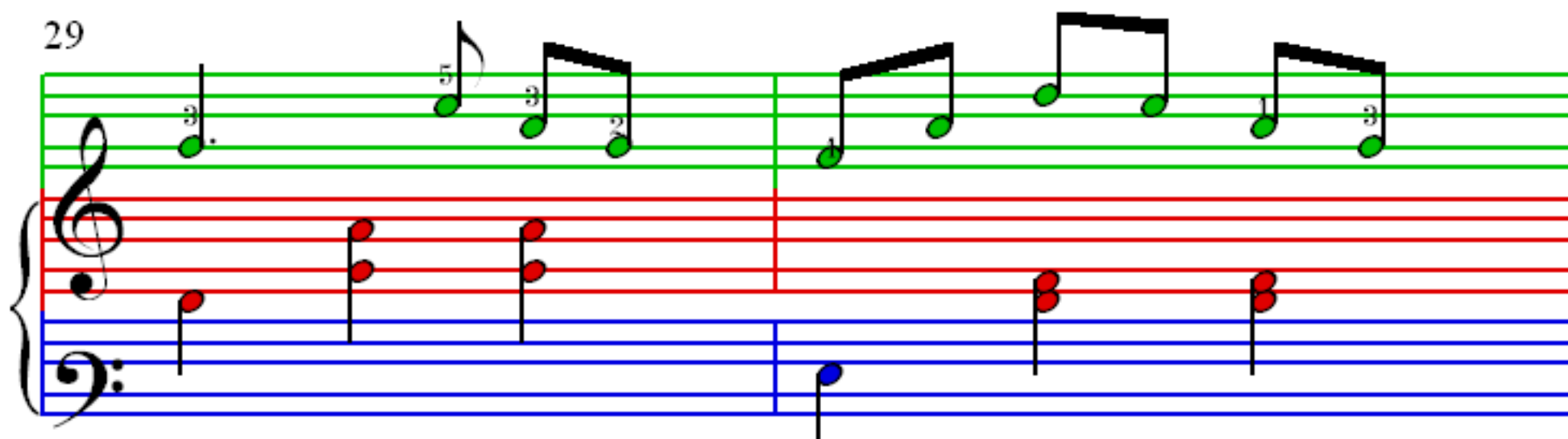
1 3

1 2

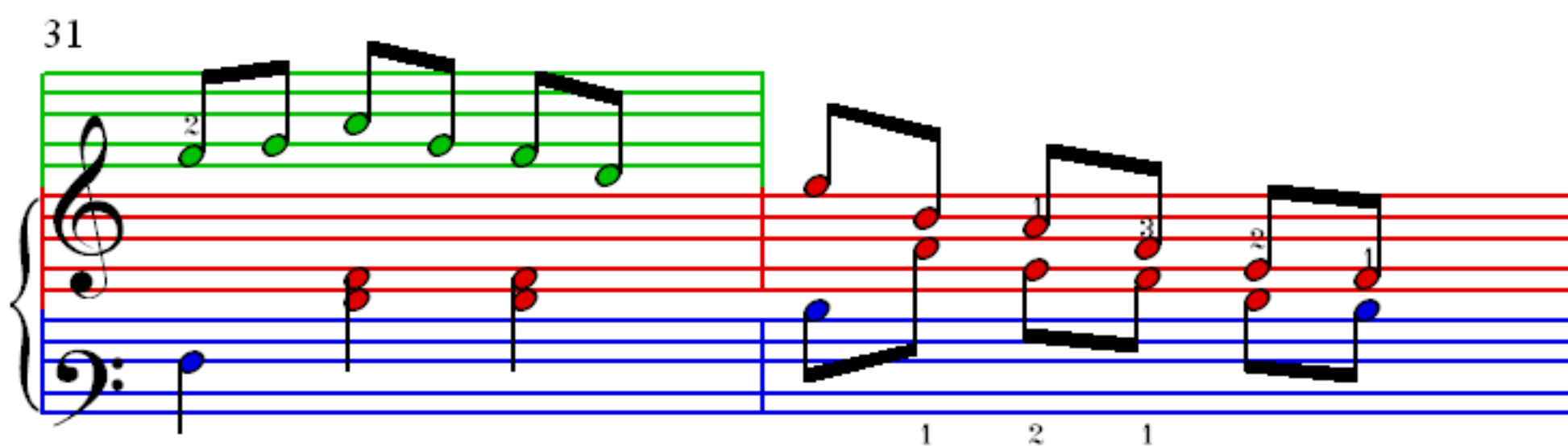
27



29



31



33

