

Conviviality

F R Spitteler

♩ = 100

Measures 1-3 of the piece. The music is in 4/4 time. The treble staff (green lines) contains a melody of eighth and sixteenth notes, often beamed together. The bass staff (blue lines) provides a harmonic accompaniment with chords and single notes. The notes are color-coded: green for the treble staff and blue for the bass staff. The first measure has a treble staff starting with a treble clef and a key signature of one sharp (F#). The second and third measures continue the melody and accompaniment.

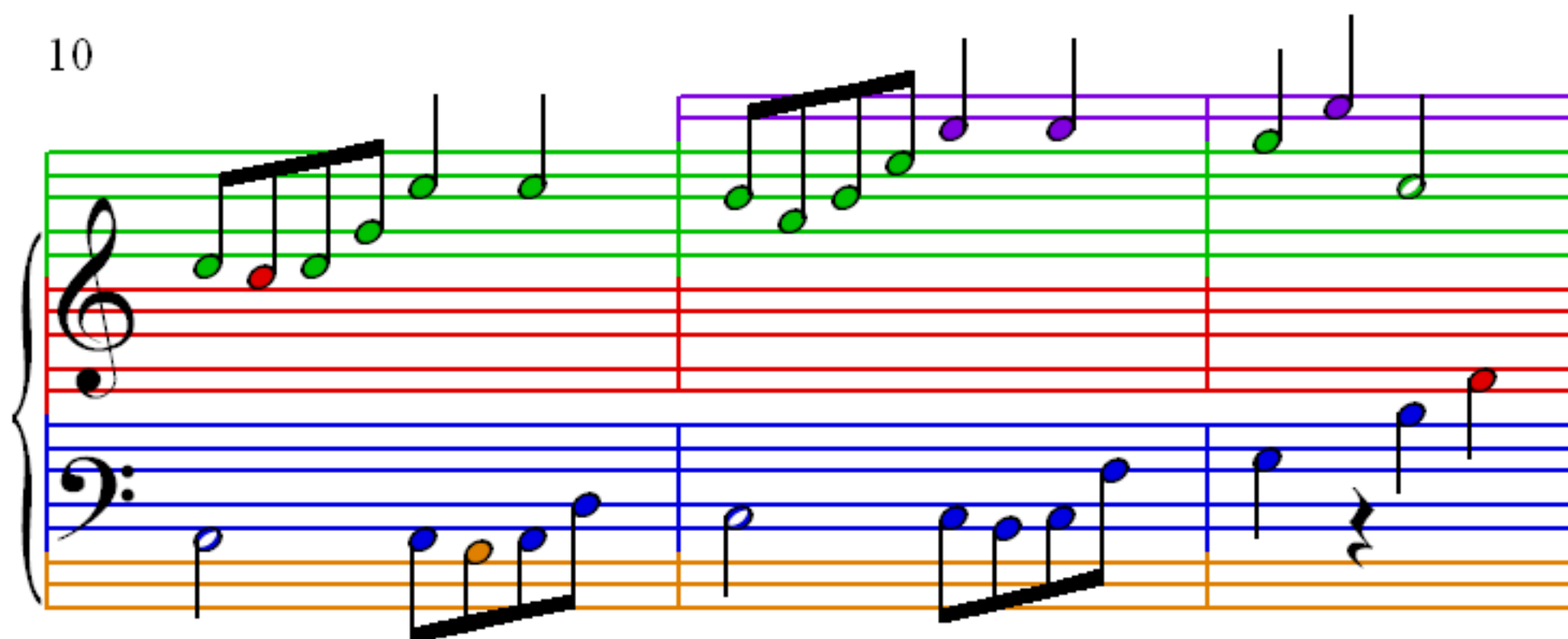
4

Measures 4-6 of the piece. The treble staff continues the melodic line with eighth and sixteenth notes. The bass staff features a more active accompaniment with eighth notes and chords. The notes are color-coded: green for the treble staff and blue for the bass staff. The fourth measure has a treble staff starting with a treble clef and a key signature of one sharp (F#). The fifth and sixth measures continue the melody and accompaniment.

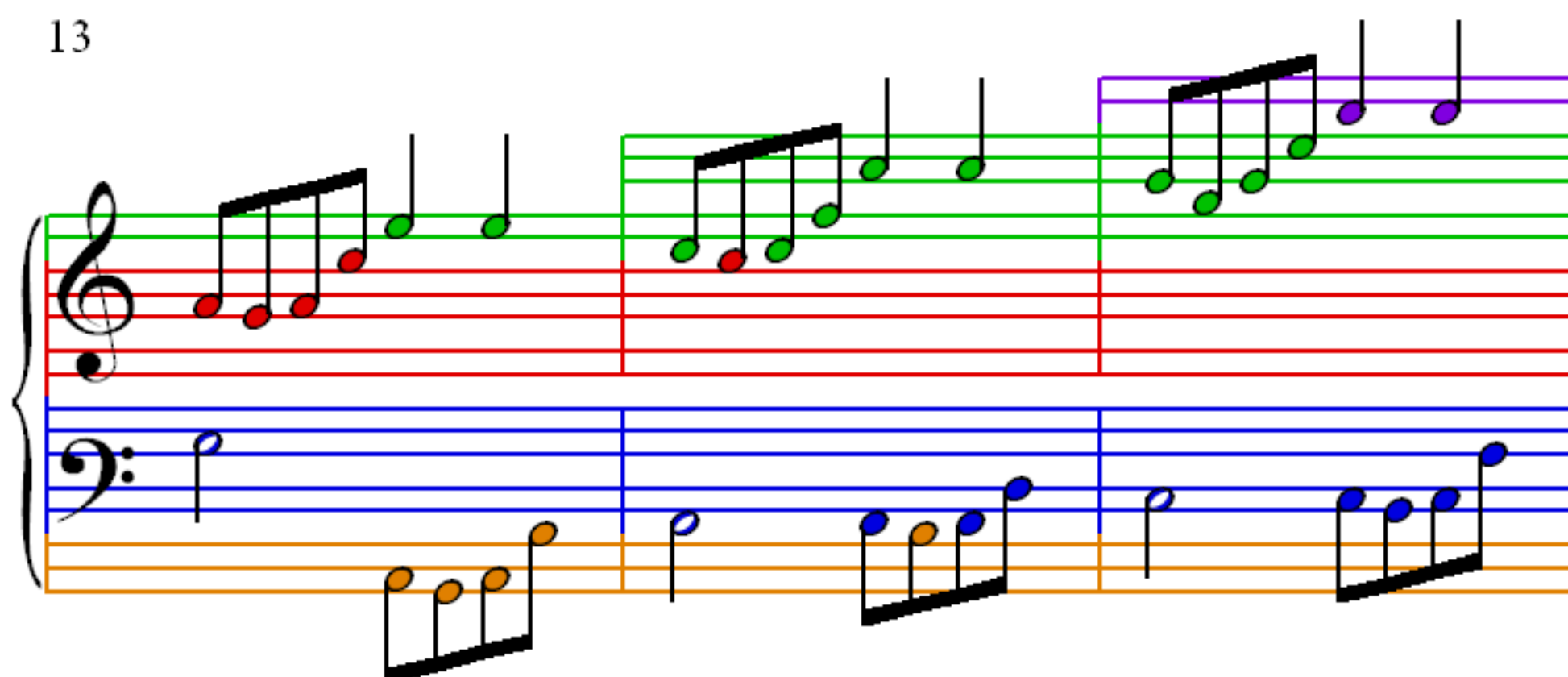
7

Measures 7-9 of the piece. The treble staff continues the melodic line with eighth and sixteenth notes. The bass staff features a more active accompaniment with eighth notes and chords. The notes are color-coded: green for the treble staff and blue for the bass staff. The seventh measure has a treble staff starting with a treble clef and a key signature of one sharp (F#). The eighth and ninth measures continue the melody and accompaniment.

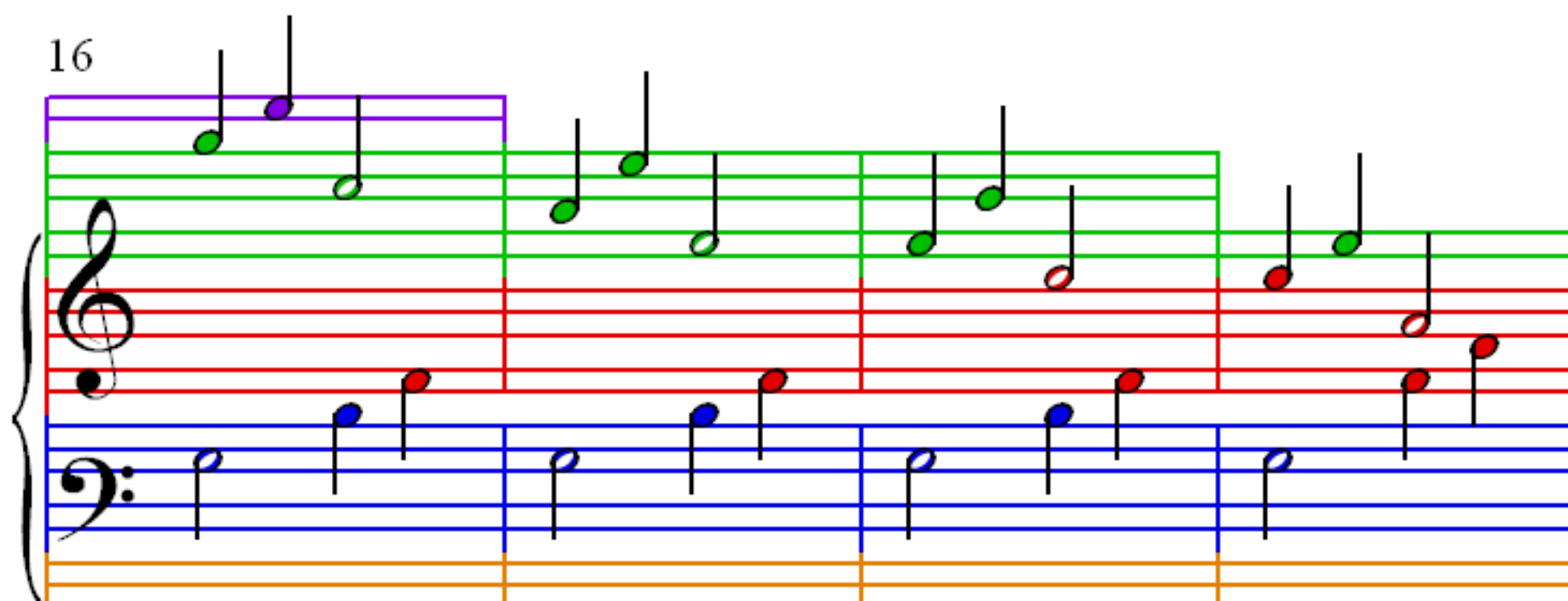
10



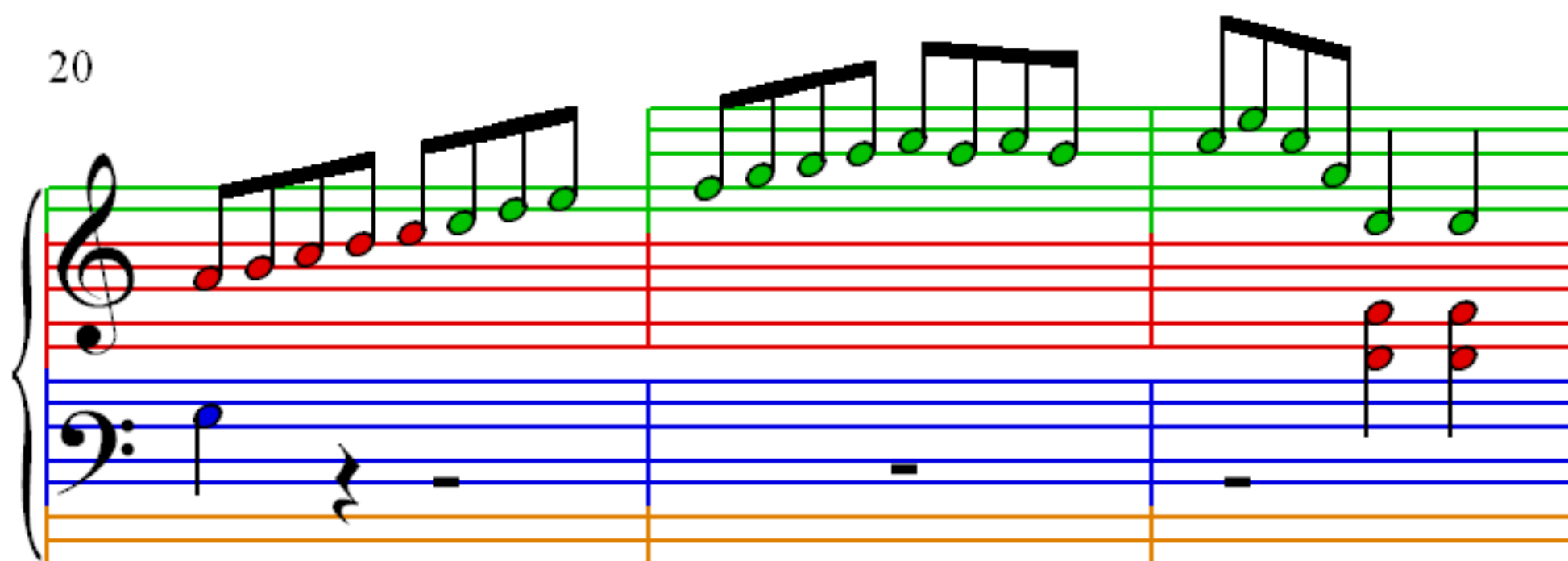
13



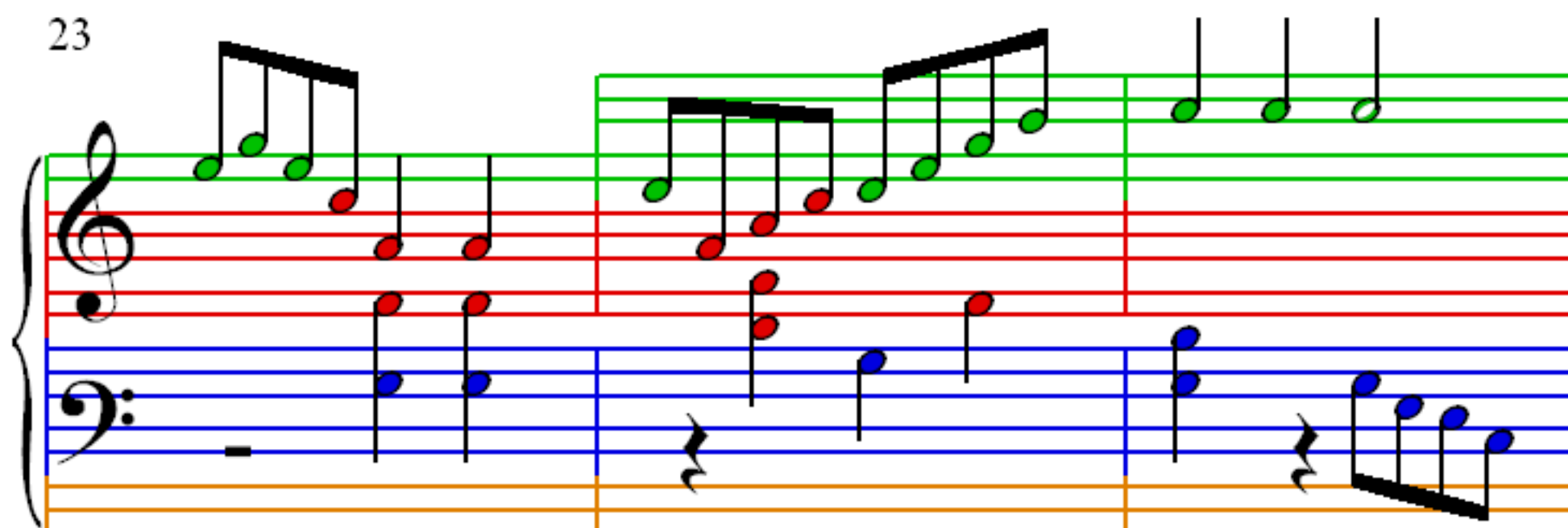
16



20



23



26

