

# Maple Leaf Rag

$\bullet = 100$

Mid tempo

Scot Joplin

1

The musical score for the first ten measures of 'Maple Leaf Rag' by Scott Joplin. It is written in 2/2 time with a key signature of one flat (Bb). The tempo is 'Mid tempo' and the starting dynamic is 'mf'. The score is presented in four systems, each with a grand staff (treble and bass clefs) and a single bass line below. The notes are color-coded: red for the right hand, blue for the left hand, and orange for the single bass line. Measure 1 starts with a treble clef, a key signature change to one flat, and a 2/2 time signature. The first system contains measures 1-3, the second system contains measures 4-6, the third system contains measures 7-9, and the fourth system contains measures 10-12. The notation includes various rhythmic values such as eighth, quarter, and half notes, as well as rests and accidentals.

4

7

10

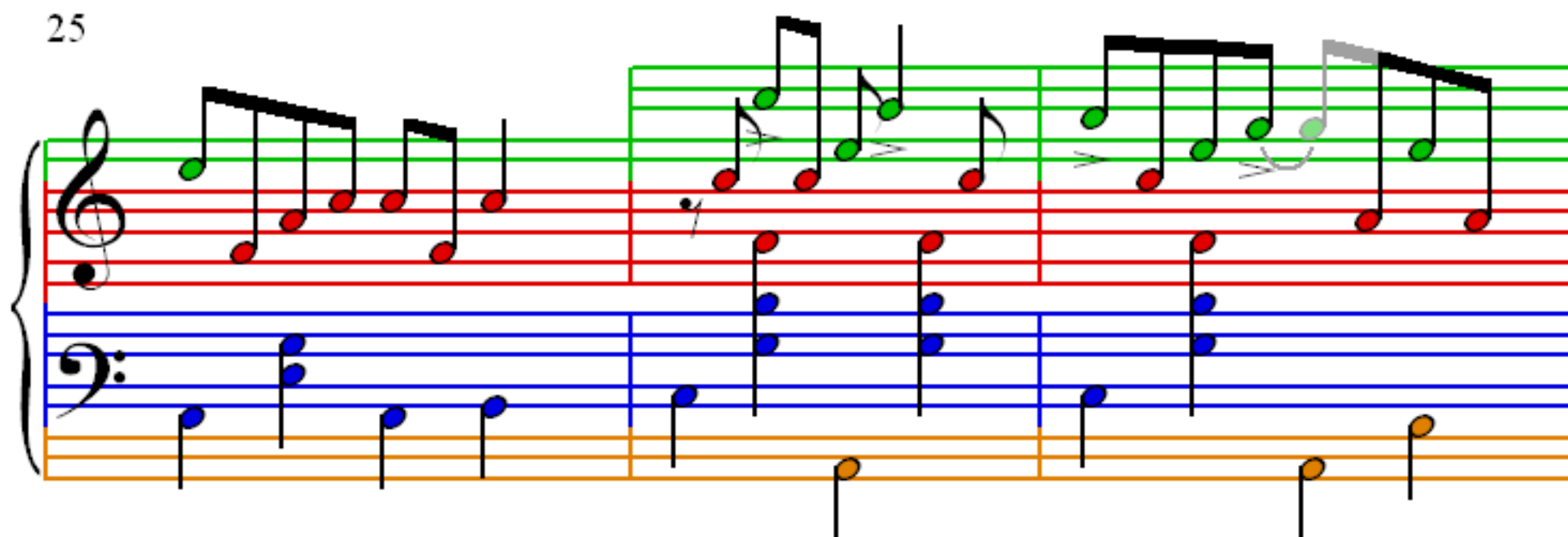
13

16

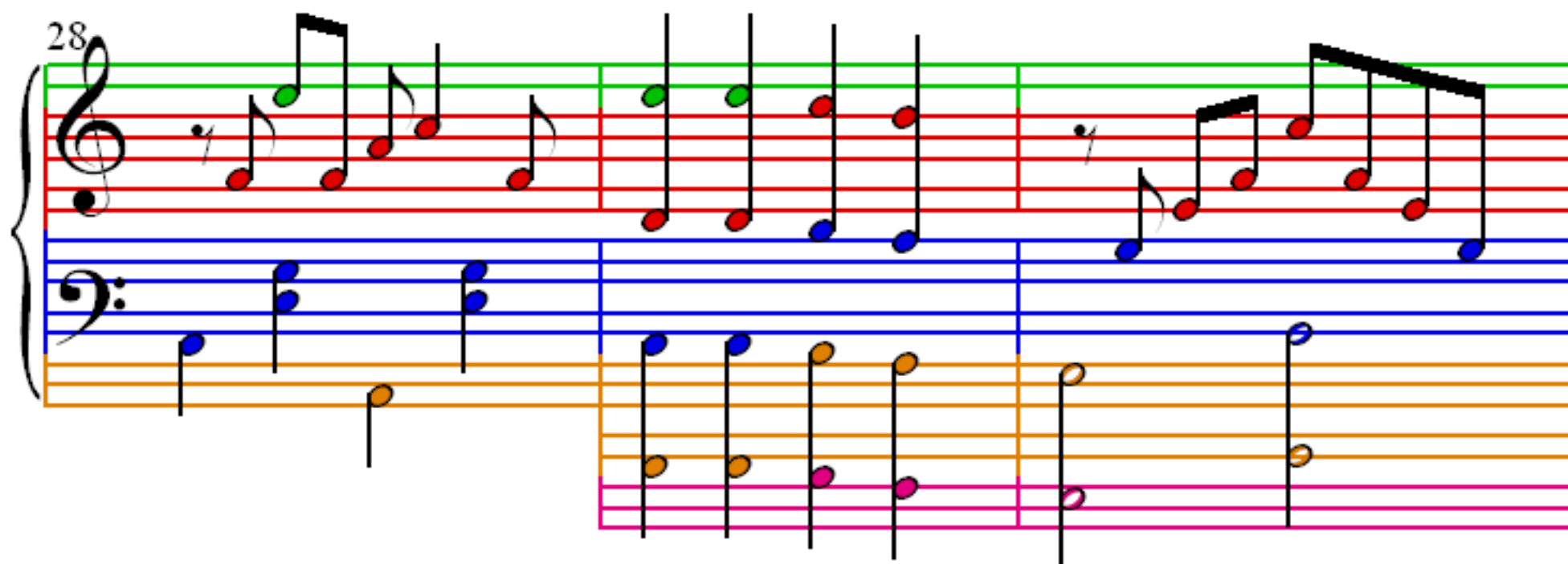
19

22

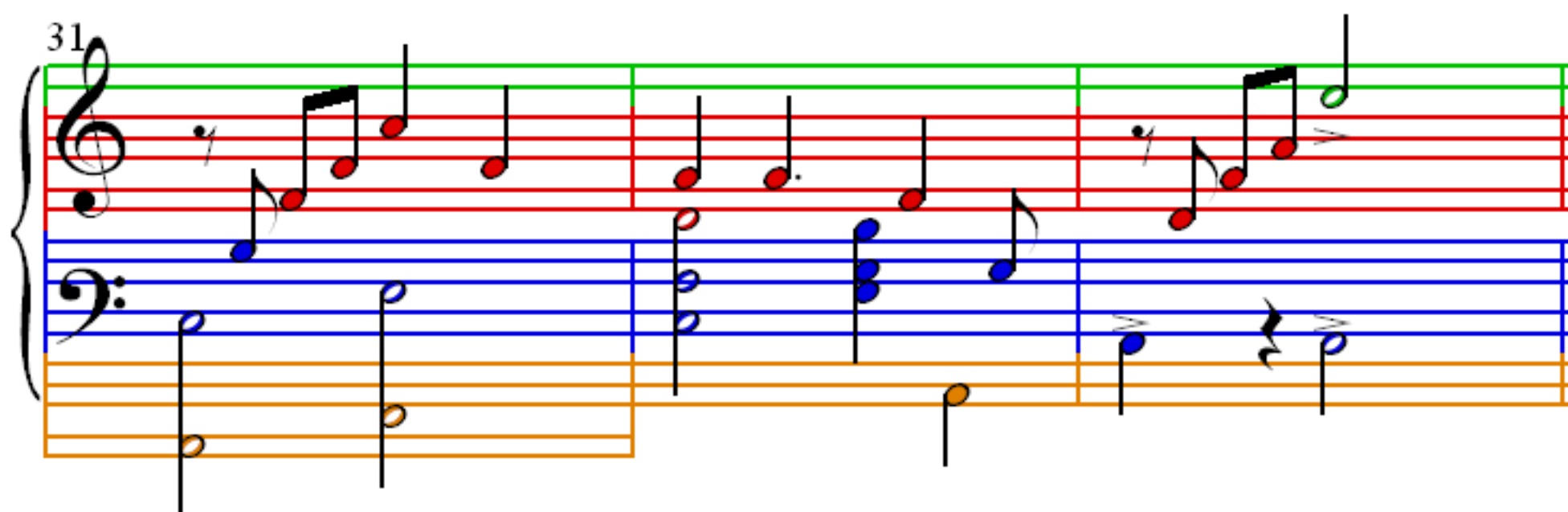
25



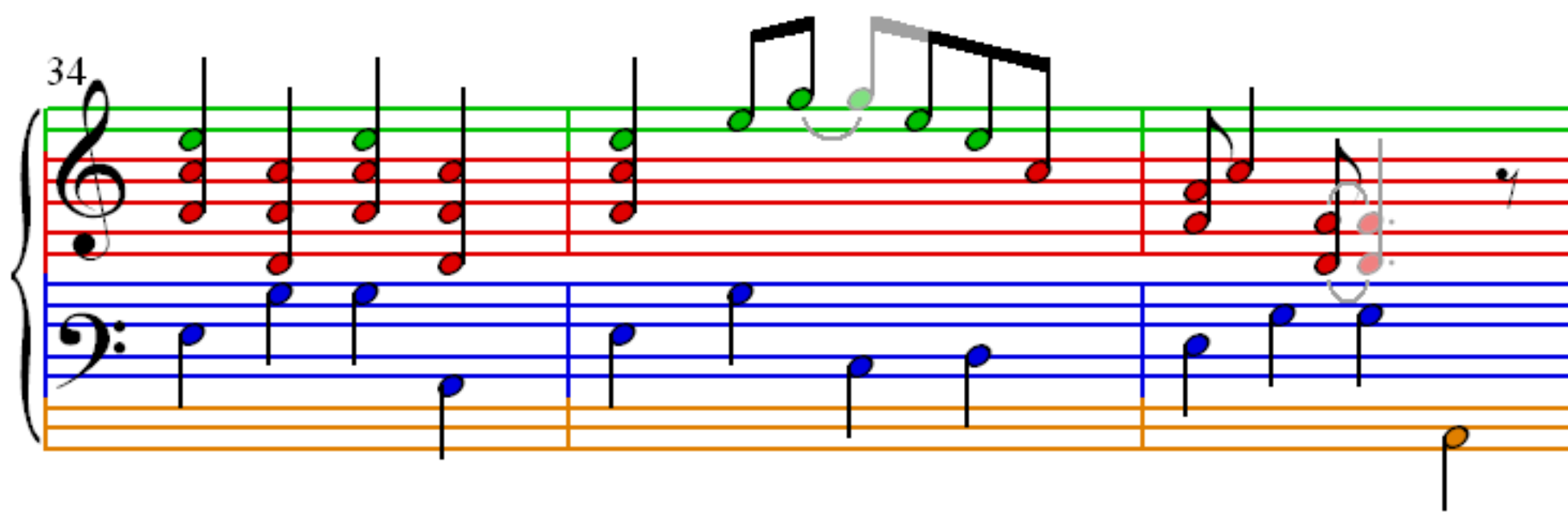
28



31



34



37

Measures 37-39 of Maple Leaf Rag. The treble staff contains eighth and sixteenth notes, while the bass staff contains quarter notes. The notation is color-coded: red for the main melody, blue for the bass line, and orange for the right hand's bass line.

40

Measures 40-42 of Maple Leaf Rag. The treble staff contains eighth and sixteenth notes, while the bass staff contains quarter notes. The notation is color-coded: red for the main melody, blue for the bass line, and orange for the right hand's bass line.

43

Measures 43-45 of Maple Leaf Rag. The treble staff contains eighth and sixteenth notes, while the bass staff contains quarter notes. The notation is color-coded: red for the main melody, blue for the bass line, and orange for the right hand's bass line.

46

Measures 46-48 of Maple Leaf Rag. The treble staff contains eighth and sixteenth notes, while the bass staff contains quarter notes. The notation is color-coded: red for the main melody, blue for the bass line, and orange for the right hand's bass line.