
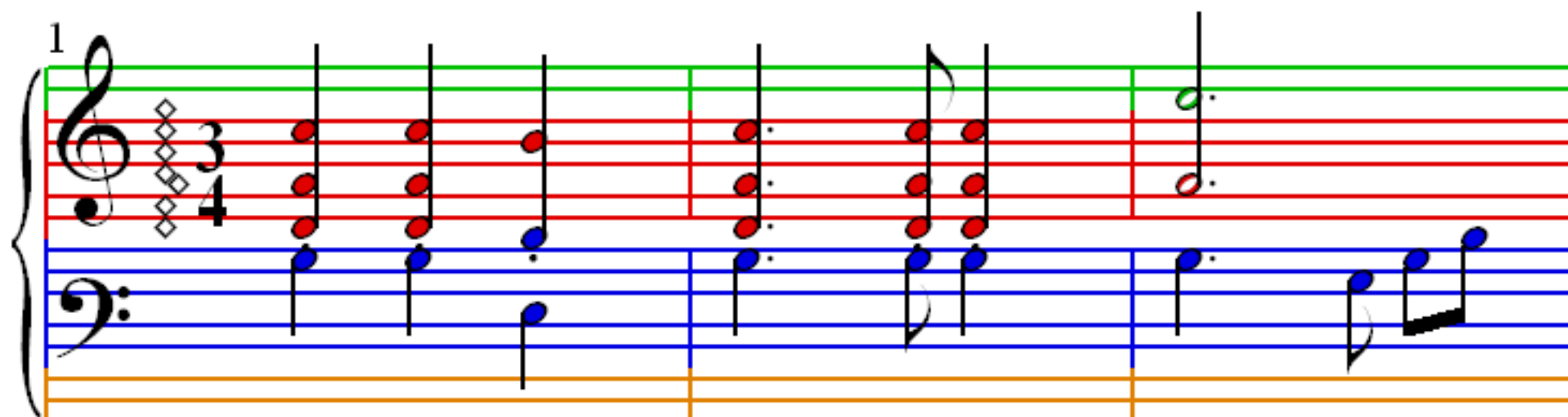


Cantate Domino

 = 100

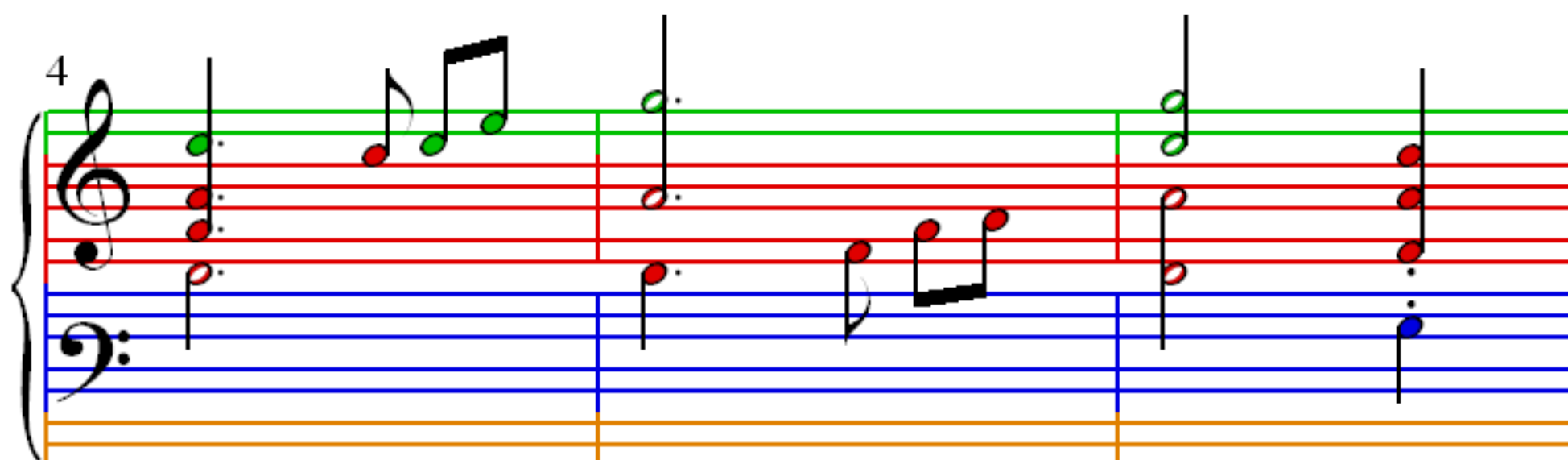
Giuseppe Pitoni

1



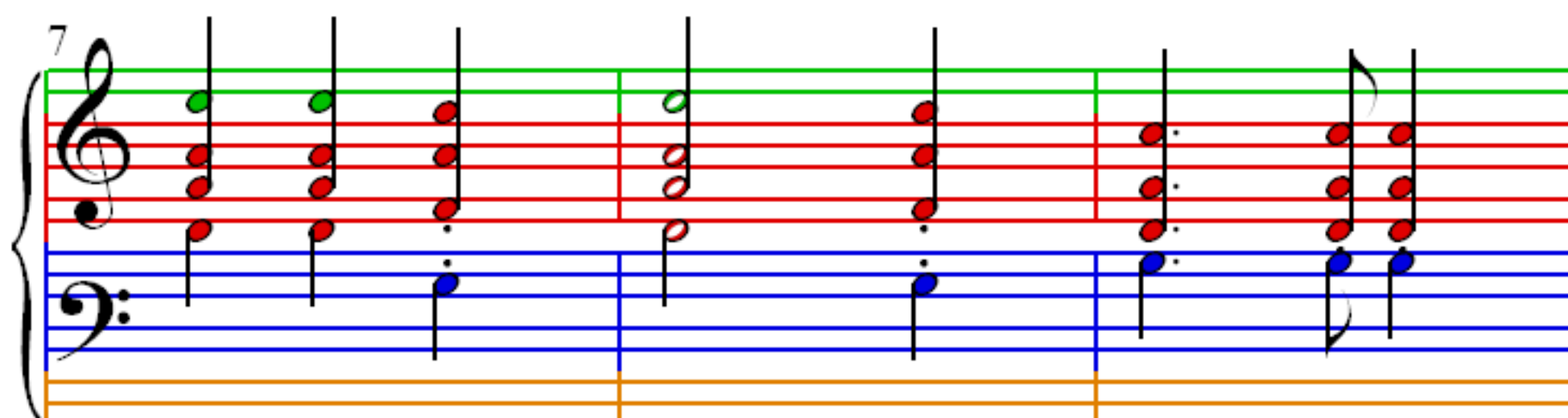
Measures 1-3 of the piece. The key signature is three flats (B-flat, E-flat, A-flat) and the time signature is 3/4. The music is written for piano with a grand staff (treble and bass clefs). The notes are color-coded: red for the right hand and blue for the left hand. Measure 1 starts with a treble clef, a key signature of three flats, and a 3/4 time signature. The first measure contains a half note chord (F4, Bb3) in the right hand and a quarter note (F3) in the left hand. The second measure contains a half note chord (Ab3, D4) in the right hand and a quarter note (A2) in the left hand. The third measure contains a half note chord (C4, F4) in the right hand and a quarter note (C2) in the left hand.

4



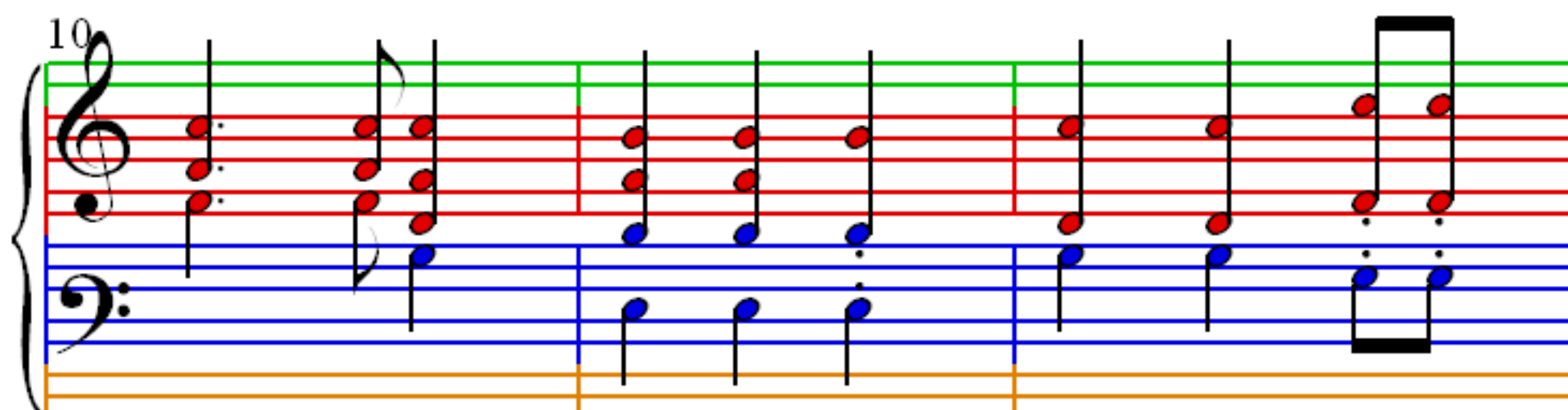
Measures 4-6 of the piece. Measure 4 contains a half note chord (E4, Ab3) in the right hand and a quarter note (E2) in the left hand. Measure 5 contains a half note chord (G4, Bb3) in the right hand and a quarter note (G2) in the left hand. Measure 6 contains a half note chord (A4, C4) in the right hand and a quarter note (A2) in the left hand.

7

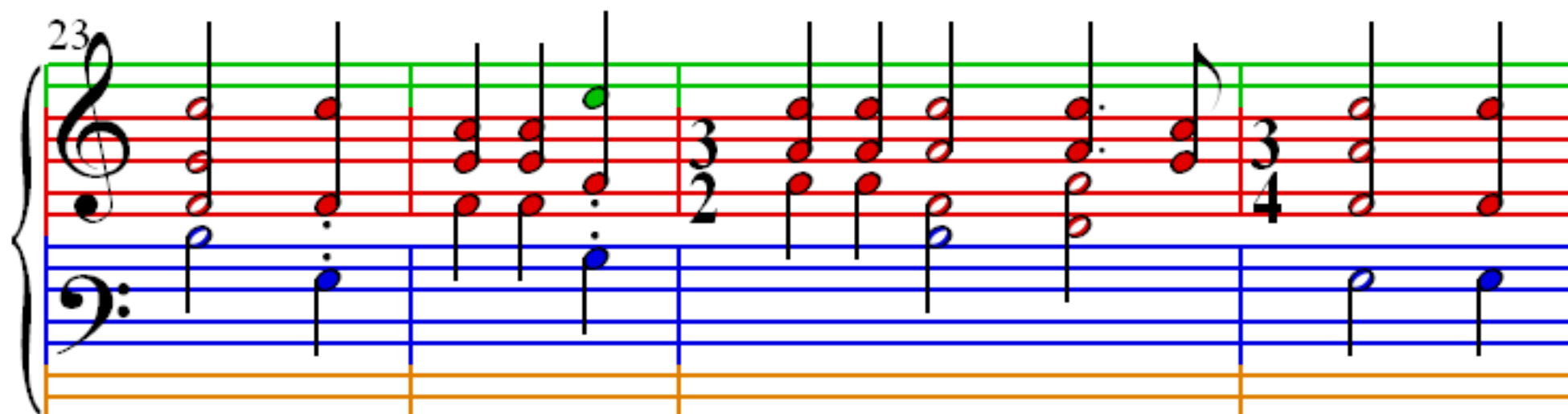
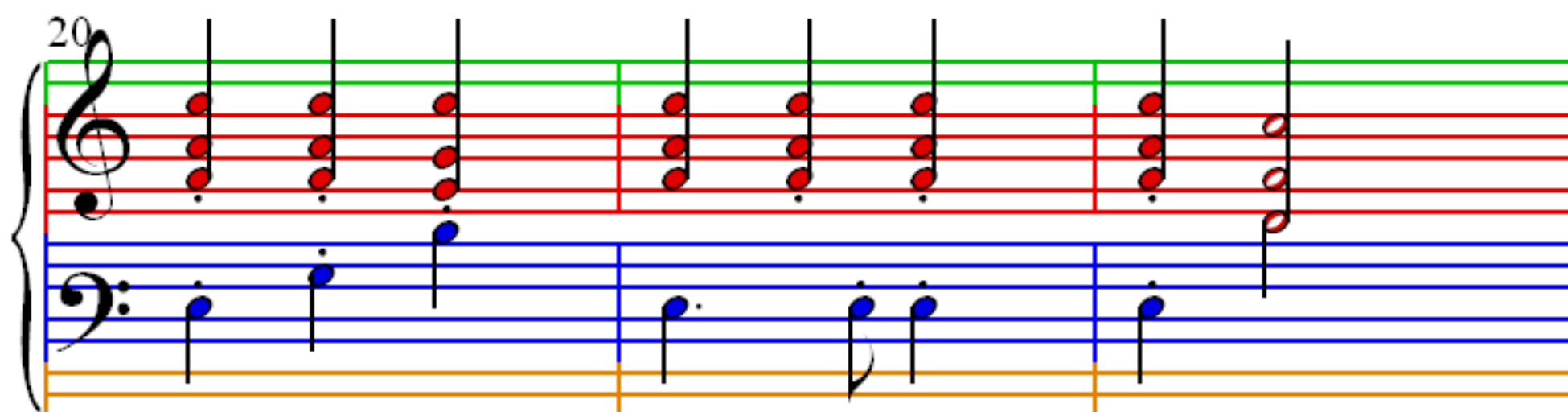
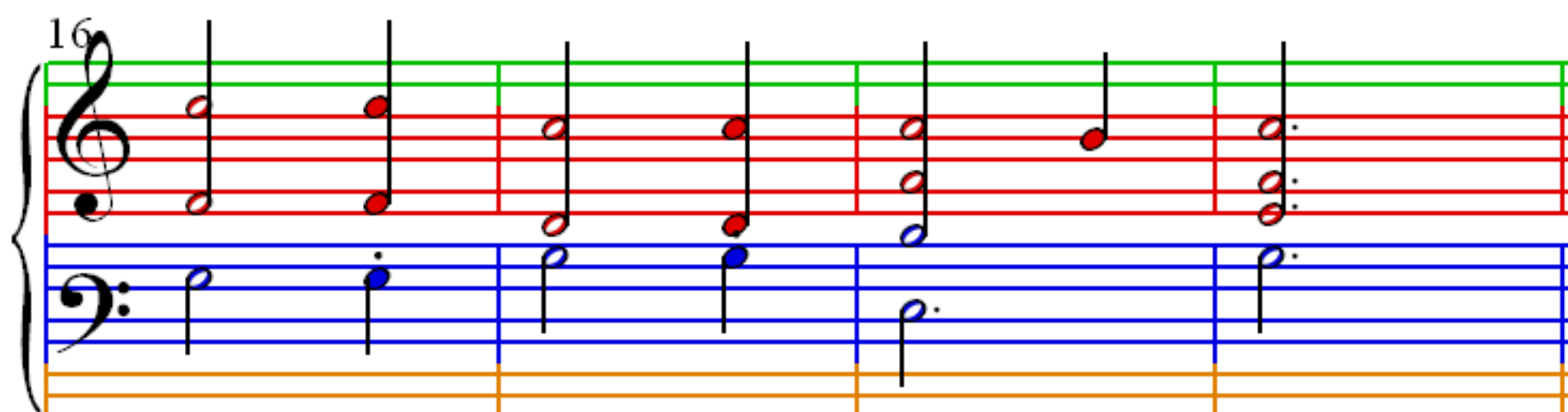
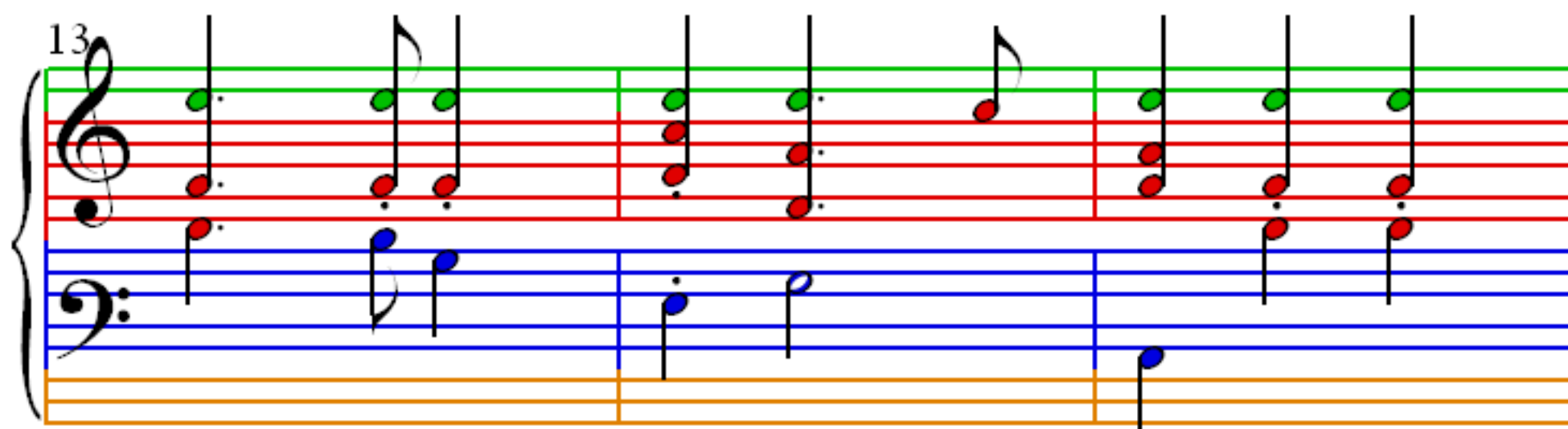


Measures 7-9 of the piece. Measure 7 contains a half note chord (Bb4, D4) in the right hand and a quarter note (Bb2) in the left hand. Measure 8 contains a half note chord (C4, F4) in the right hand and a quarter note (C2) in the left hand. Measure 9 contains a half note chord (E4, Ab3) in the right hand and a quarter note (E2) in the left hand.

10



Measures 10-12 of the piece. Measure 10 contains a half note chord (F4, Bb3) in the right hand and a quarter note (F2) in the left hand. Measure 11 contains a half note chord (A4, C4) in the right hand and a quarter note (A2) in the left hand. Measure 12 contains a half note chord (Bb4, D4) in the right hand and a quarter note (Bb2) in the left hand.



27

31

35

39