

# Joy to the World

$\text{♩} = 100$

Anon

The musical score for "Joy to the World" is presented in a piano accompaniment format. It consists of four systems of music, each with a treble and bass staff. The time signature is 2/4, and the tempo is marked as  $\text{♩} = 100$ . The key signature is one flat (B-flat). The score is numbered 1, 4, 7, and 10 at the beginning of each system. The notation includes various musical symbols such as notes, rests, and accidentals, with some notes highlighted in green and others in red. The bass staff is primarily blue, and the treble staff is primarily red, with some green notes in the treble staff. The score is written in a standard musical notation format, with a grand staff for each system.

13

16

19

23

27

30

33

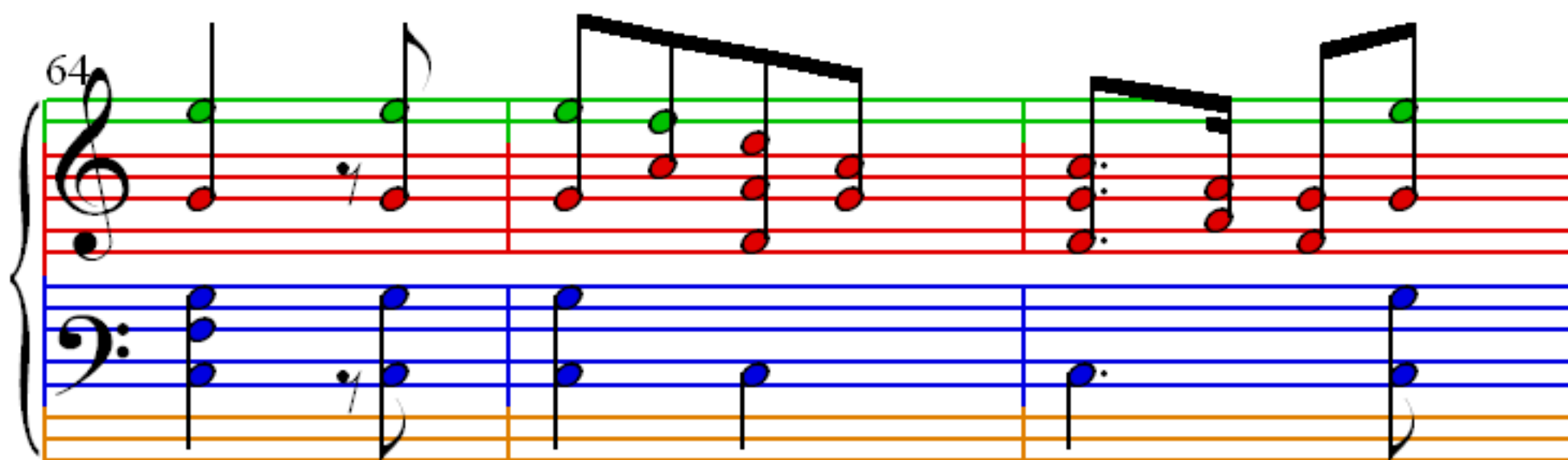
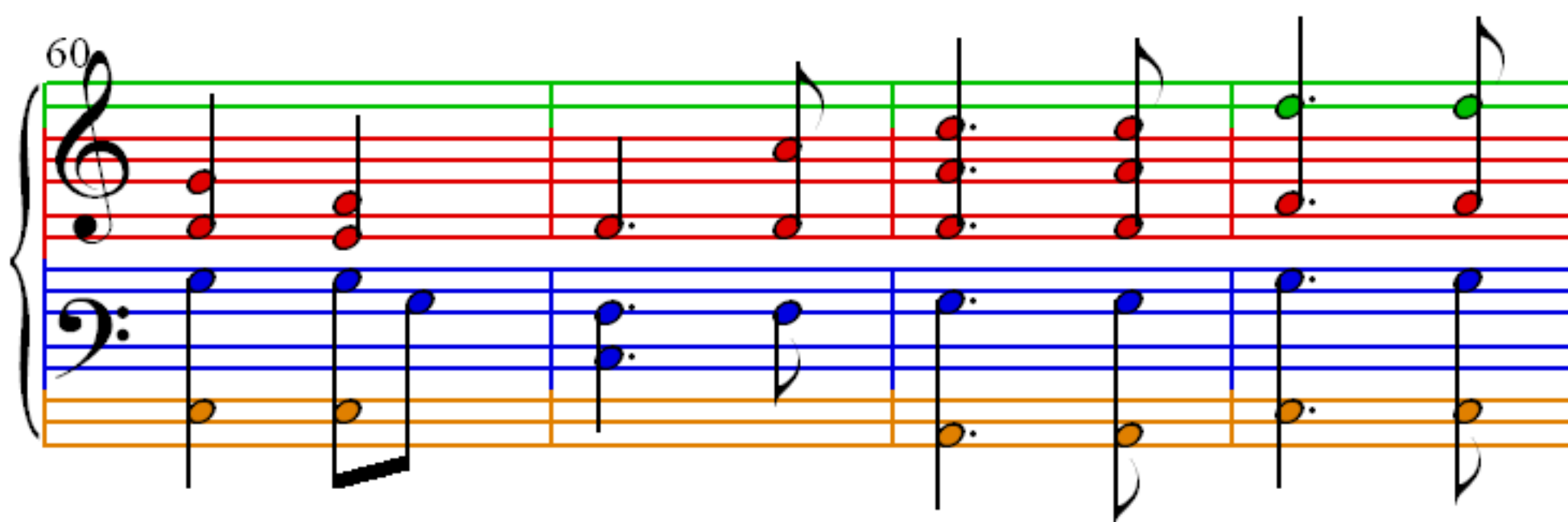
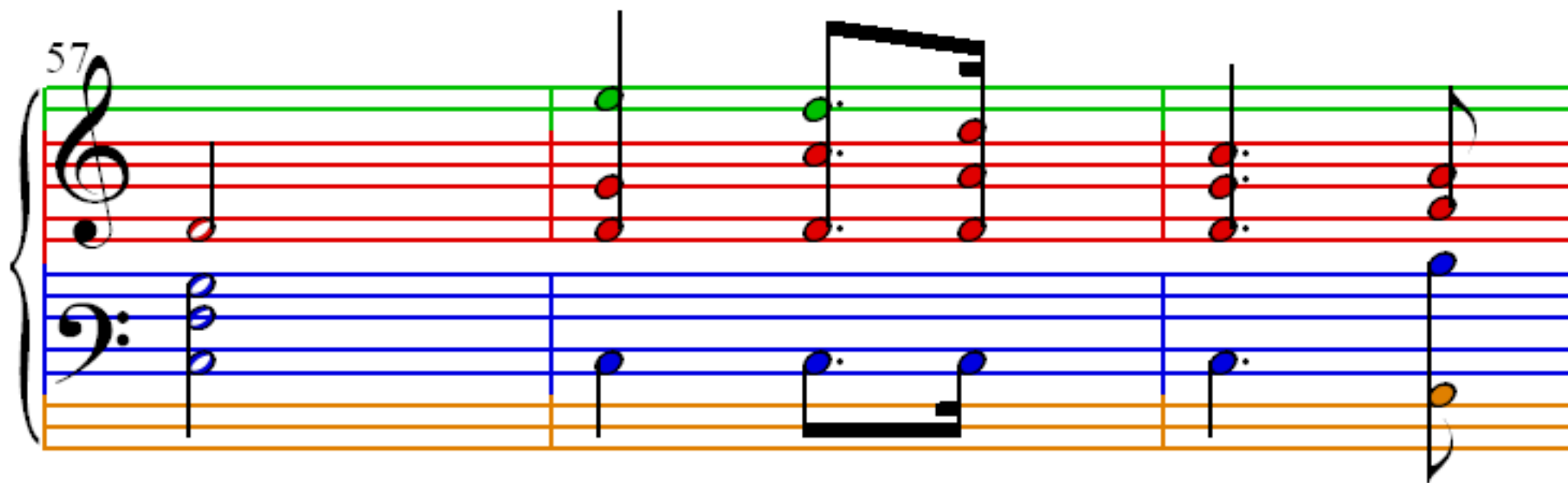
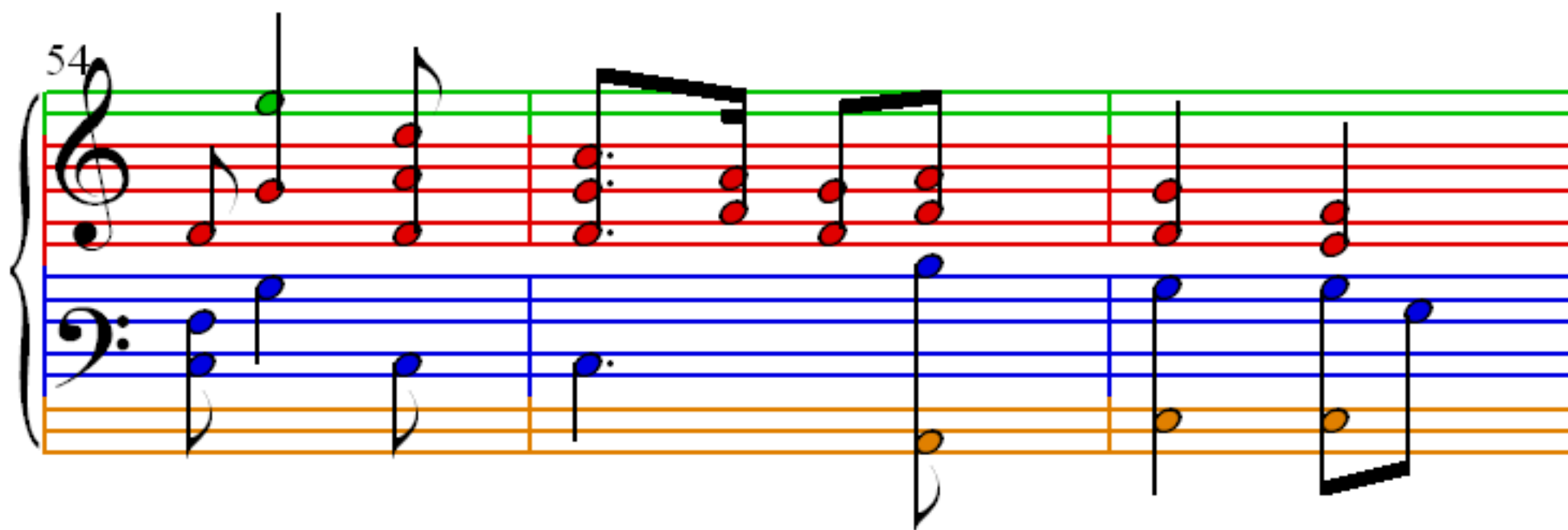
36

40

44

48

51



67

70

73

76